



RESOURCEBASE
LIMITED

ABN 57 113 385 425

Level 17, 500 Collins Street
MELBOURNE VIC 3000

Phone: (03) 9614 0600

Fax: (03) 9614 0550

Email: admin@resourcebase.com.au

Web Site: www.resourcebase.com.au

1 April 2016

Exploration Targets identified at Broula King

[ASX Code: RBX]

Highlights

- **Priority gold targets have been identified within the immediate vicinity of the existing Broula King open pit**
- **IP data has identified a number of high quality exploration targets within the existing Broula King Mining Lease**

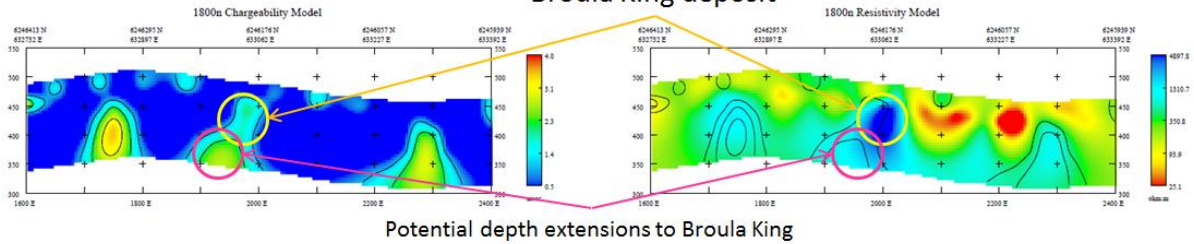
Resource Base Limited ("RBX") (ASX: RBX) is pleased to announce that it has recently completed an extensive review of the exploration potential with the Broula King Mining Lease ("BKML").

The use of modern geophysical techniques on an Induced Polarization ("IP") survey undertaken by Western Mining Corporation in 1976 has identified a number of targets for gold mineralisation. These target have similar geophysical signatures to the mined Broula King gold mineralisation.

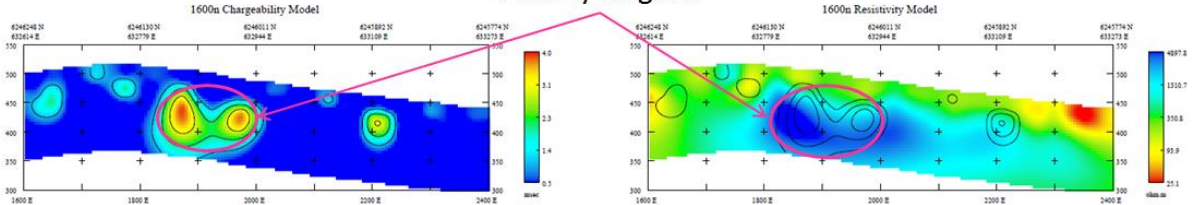
The Broula King gold mineralisation is hosted by sulphide bearing silicified hydrothermal breccias and quartz veins. The IP survey clearly identifies the Broula King gold mineralisation as a chargeable resistor. Under ideal circumstances IP chargeability responses are a measure of disseminated sulphides while the resistivity is an indication of silicification. The zones (as shown below) identified by the IP survey have been interpreted as potential depth extensions to and faulted offsets to the Broula King gold mineralisation.

Inversion models of 1976 WMC survey

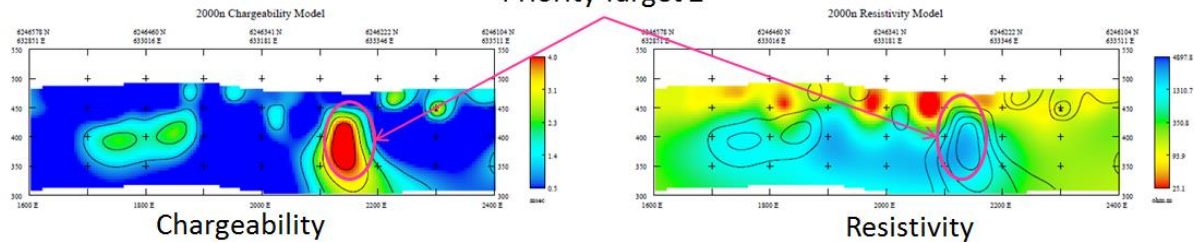
Broula King deposit



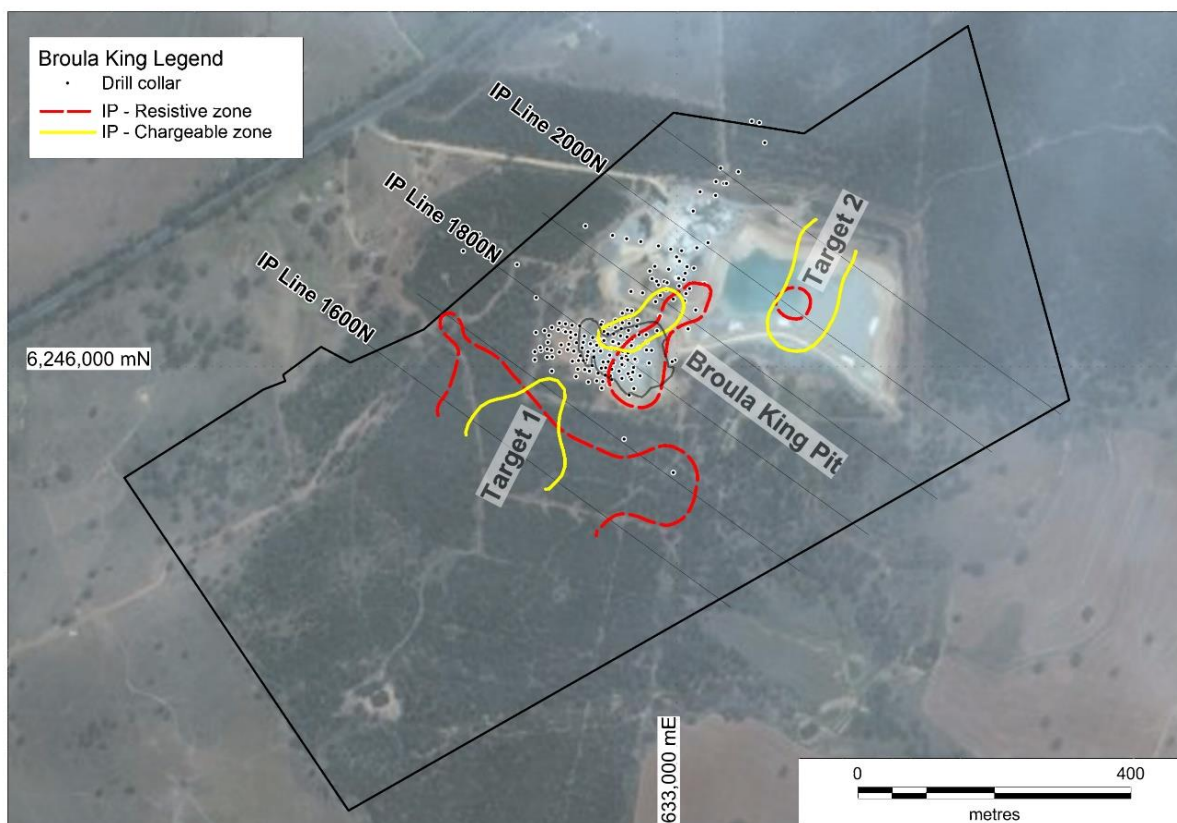
Priority Target 1



Priority Target 2



In addition to the targets identified from the IP inversion modelling, recent structural mapping of the Broula King area, in conjunction with 3D modelling of grade control drilling has identified possible near surface extensions of gold mineralisation to the south east of the Broula King pit.



These exploration targets are within the BKML and neighbors the existing Broula King CIL plant and tailings dam facility.

The exploration program is ongoing.

ENDS

For further information, please contact:

Martin Janes

Non-Executive Director

Resource Base Limited

+61 8 8213 1415

admin@resourcebase.com.au