

ASX ANNOUNCEMENT

6 August 2025

Drilling discovers new 'Monster' gold zone near Main Hill at Mt York, WA

New results extend mineralisation from undrilled Main Hill area; additional drilling required to further define new zone

Highlights

- Best intercept of 53m @ 1.45 g/t Au from 212m incl 10m @ 2.95 g/t Au received from latest batch of drill results at 1.4Moz Mt York Gold Project
- Four diamond holes planned to follow up and test extensions of this extensional zone near Main Hill
- 52 holes for 13,536m completed at Mt York, ahead of schedule and on budget; Stage 1 is an 80-hole, 18,000m resource expansion program
- Results for 19 holes received, with excellent intercepts including:
 - 3m @ 7.20 g/t Au from 181m (25MYDD020);
 - 62m @ 0.78 g/t Au from 79m incl 25m @ 1.22 g/t Au from 79m (25MYDD023);
 - 53m @ 1.45 g/t Au from 212m incl 10m @ 2.95 g/t Au from 239m (25MYDD031);
 - 22m @ 1.30 g/t Au from 70m incl 7m @ 2.55 g/t Au from 83m (25MYDD039).
- Results expected to have a positive impact for an updated resource estimate later in 2025.

Kairos Minerals Ltd (ASX: KAI) ("KAI" or the "**Company**") is pleased to announce results from a further 19 diamond holes, including a new, wide zone of gold mineralisation intercepted at its Mt York Gold Project in WA's Pilbara, where current resources at the Main Trend sit at 1.4Moz Au. Results from Gossan Hill (7 holes), Breccia Hill (3 holes) and Main Hill (9 holes) (**Table 1**), are shown on the Leapfrog oblique-section (**Figure 1**) drill plan (**Figure 2**), long-section (**Figure 3**) and cross-section (**Figure 4**).

Drill hole 25MYDD031 returned **53m @ 1.45 g/t Au** from 212m northwest of Main Hill that may well be an important new discovery in an area that had not previously been drilled. This is expected to have a very positive impact on the resource of the Main Trend.

Kairos' team believes this area named 'Monster' by the Kairos geologists on site is a new structural zone, likely to be a large-scale fold flexure or closure in the BIF where

thick, high-grade mineralisation has been drilled elsewhere at the Main Trend. The implications of a new fold zone or zones could have a significant, positive impact on the potential project resource size along the 3km Main Trend, and especially in the Main Hill area. Kairos geologists are currently looking at additional drill holes to target the concept and ultimately, grow the resources.

Stage 1 drilling aims to boost gold resources at Mt York and test extensions of high-grade shoots ahead of a mineral resource estimate (MRE) update expected in 2H CY25. Stage 2 drilling later in the year or early 2026 aims to convert Inferred resources to higher confidence Indicated resources.

Kairos Managing Director Dr Peter Turner said: *"Drilling continues to provide nice surprises and we are beginning to understand the controls on the wide, higher-grade zones of mineralisation within fold flexures that we can map out and importantly, target over hundreds of metres along the 3km-long, continuously mineralised Main Trend."*

To report a drill hole intercept of 53m @ 1.45 g/t Au in any gold project is a good result but this result is even more special – it is an extension of the largely untested Main Hill prospect where the mineralisation remains open in all directions and is an exciting, large target to drill."

We remain confident Mt York will become one of the Pilbara's – and Western Australia's – largest undeveloped gold resources with clean metallurgy, once drilling is complete."

Drill Results

Results from a further 19 holes are shown in **Table 1**. The Stage 1 drill holes were designed to test the grades and widths of mineralisation and purposely look for extensions of higher-grade pods within the entire 3,000m-long Main Trend Gold Deposit. The positions of the drill holes and their results are shown on **Figure 2 (plan view)** & **Figures 1** (Leapfrog, oblique-view, grade shell model) and **Figure 3 (long-section)**. Part of the mineralised core is shown in **Photo 1**.

Many of the results released are from Main Hill. Main Hill hosts the largest width of banded iron formation (BIF) rocks (>100m) and widest zones of mineralisation, but despite this, remains the prospect that is most under-drilled due to topographic challenges. Kairos has been able, with the assistance of specialised drill rigs, to drill Main Hill from both northern and southern positions in this program to provide new information to guide the new mineral resource estimate later in the year.

Hole 25MYDD031 is the stand-out drill result with **53m @ 1.45 g/t Au from 212m incl 10m @ 2.95 g/t Au from 239m**. The hole tests the extension of the Main Trend mineralisation past Main Hill to the PLS licence boundary to the northwest. The mineralisation intercepted is BIF (**Figure 4**) containing fine-grained arsenopyrite, some brecciation and quartz veining (**Photo 1**). Close examination of the core suggests that the mineralisation is proximal to a flexure or closure of a large-scale fold structure which, in theory, can be traced along-strike towards Main Hill in one

direction and Main Hill Extension on the PLS ground in the other. The intercept is thought to intersect the mineralisation almost obliquely and therefore be relatively close to true width. More drilling will allow refinement of the mineralisation model.

There is potential to increase resource ounces if this structure is followed to the east (and west) towards drillholes 25MYDD017 that intercepted multiple zones including **48m @ 1.03 g/t Au from 227m** including a higher-grade zone of **11m @ 3.38 g/t Au from 264m**. This extends a new zone of high-grade mineralisation on the footwall position and forms part of the horizontal-plunging, high-grade zone drilled >300m to the west in hole 25MYDD012 (**7m @ 2.66 g/t Au from 269m**) extending to 25MYDD010 (**5m @ 4.26 g/t Au from 299m**) (see **Figure 1** for location of drill holes).

Routine infill drilling for resource estimation has been undertaken at Breccia Hill and Gossan Hill, with holes and results shown on **Figure 2**. Higher grade results of **3m @ 7.20 g/t Au from 181m** from hole 25MYDD020 show the high-grade potential of the project within lower grade zones.

All results of infill and extensional drilling herein are considered positive for the next resource estimate to potentially increase resources, especially in the Main Hill and Main Hill Extensional/Monster areas.

Further drill results from Mt York are expected throughout August and September and will be released to the ASX once routine quality-assurance, quality-control (QAQC) checks have been completed.

Next Steps

- Finalise Stage 1 drilling program, routine review of results
- Compile all geological and assay data in preparation for updated Mineral Resource Estimate
- Finalise the mineral rights agreement with PLS, to gain access to the Main Hill Extension Prospect and other 367km² of PLS licences and applications
- Continue negotiations with Nyamal Aboriginal Corporation towards a mining agreement
- Commence PFS work, including advanced metallurgical test work once core becomes available from fresh, transitional and oxide ore generated by drilling.

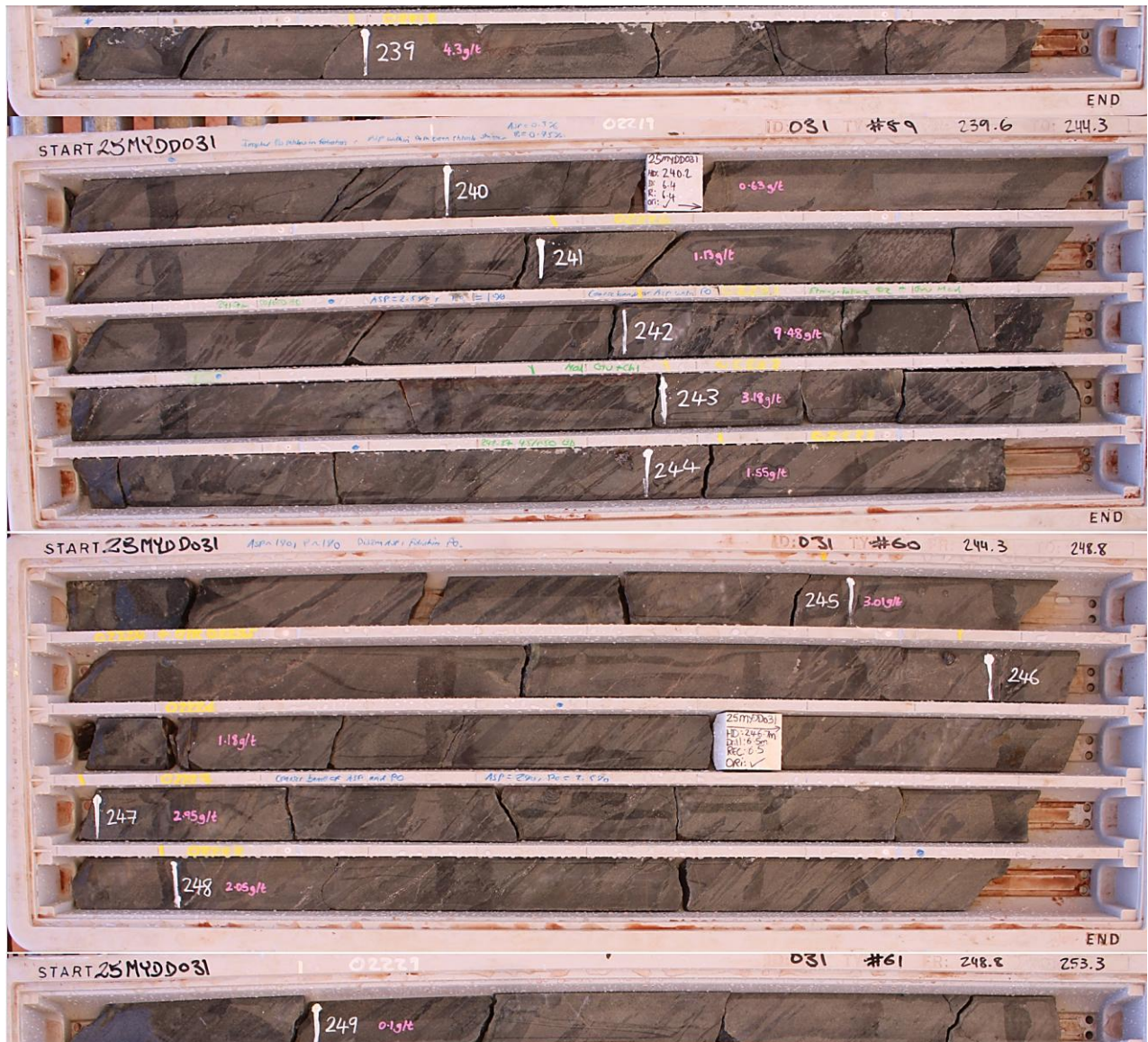


Photo 1. Part of the mineralised hole 25MYDD031 showing the core from interval 239m to 249m with intercept **10m @ 2.95g/t Au** within the broader intercept of **53m @ 1.45 g/t Au** from 212m to 265m. The gold grades are written on the core in pink in g/t Au. The core comprises banded iron formation (BIF) host rocks that contain an alteration assemblage of grunerite and finely disseminated arsenopyrite. Brecciation and folding is apparent in the core section 212m to 265m. Arsenopyrite is a key indicator of gold mineralisation. Note that extensive metallurgical test work indicates that mineralisation at Mt York is free-milling (see KAI press release dated 27 November 2024 entitled 'Strong Scoping Study forecasts robust financial returns'. Core diameter is NQ with a diameter of 47.6mm for scale.

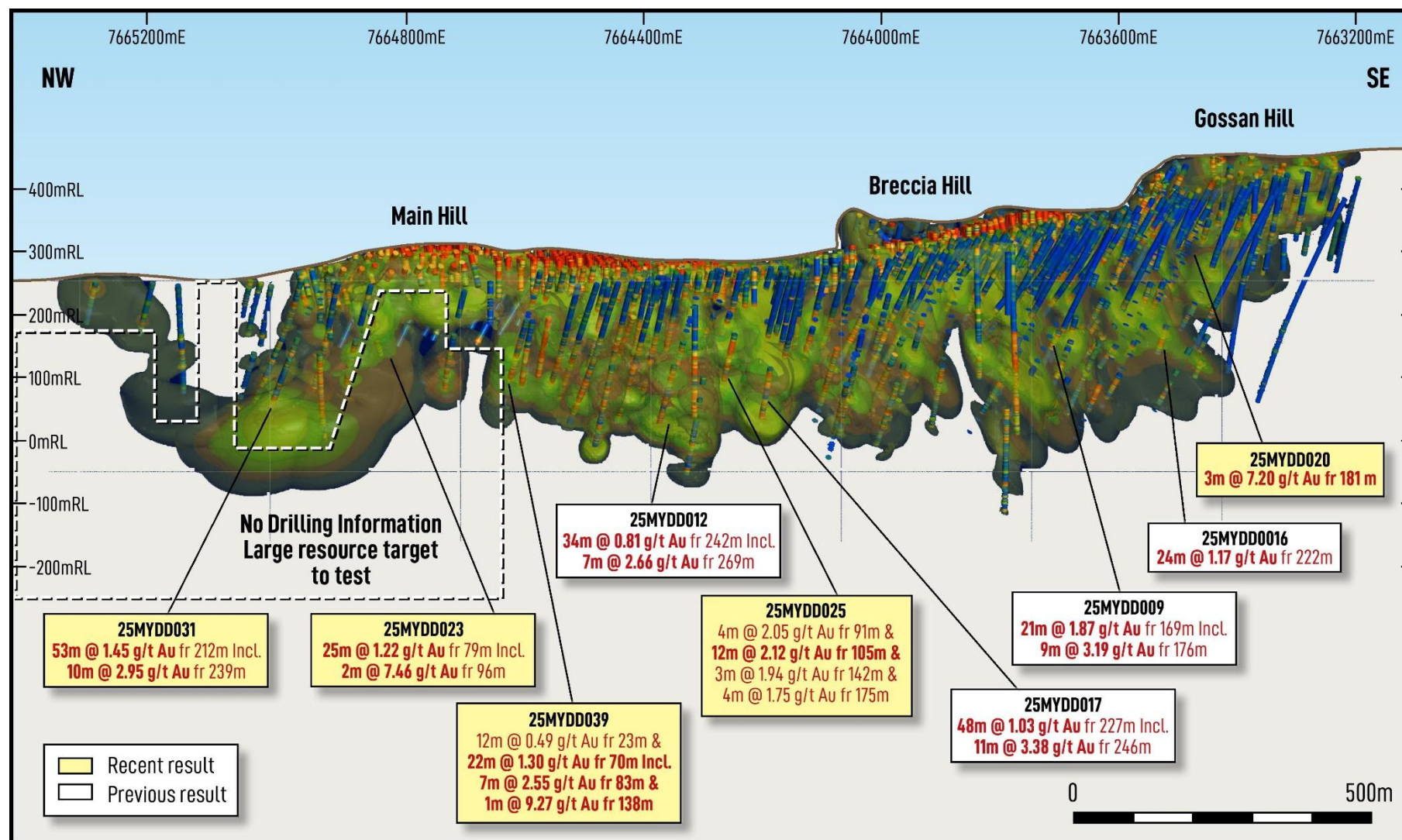


Figure 1. Leapfrog 'grade shell' model of the Main Trend including the position of the new 'Monster' Zone. The outer grade shell is >0.1 g/t Au. Looking northeast. Result contained in this release are in the yellow boxes. Historic results are from drill results from ASX announcement dated 17 July 2025.

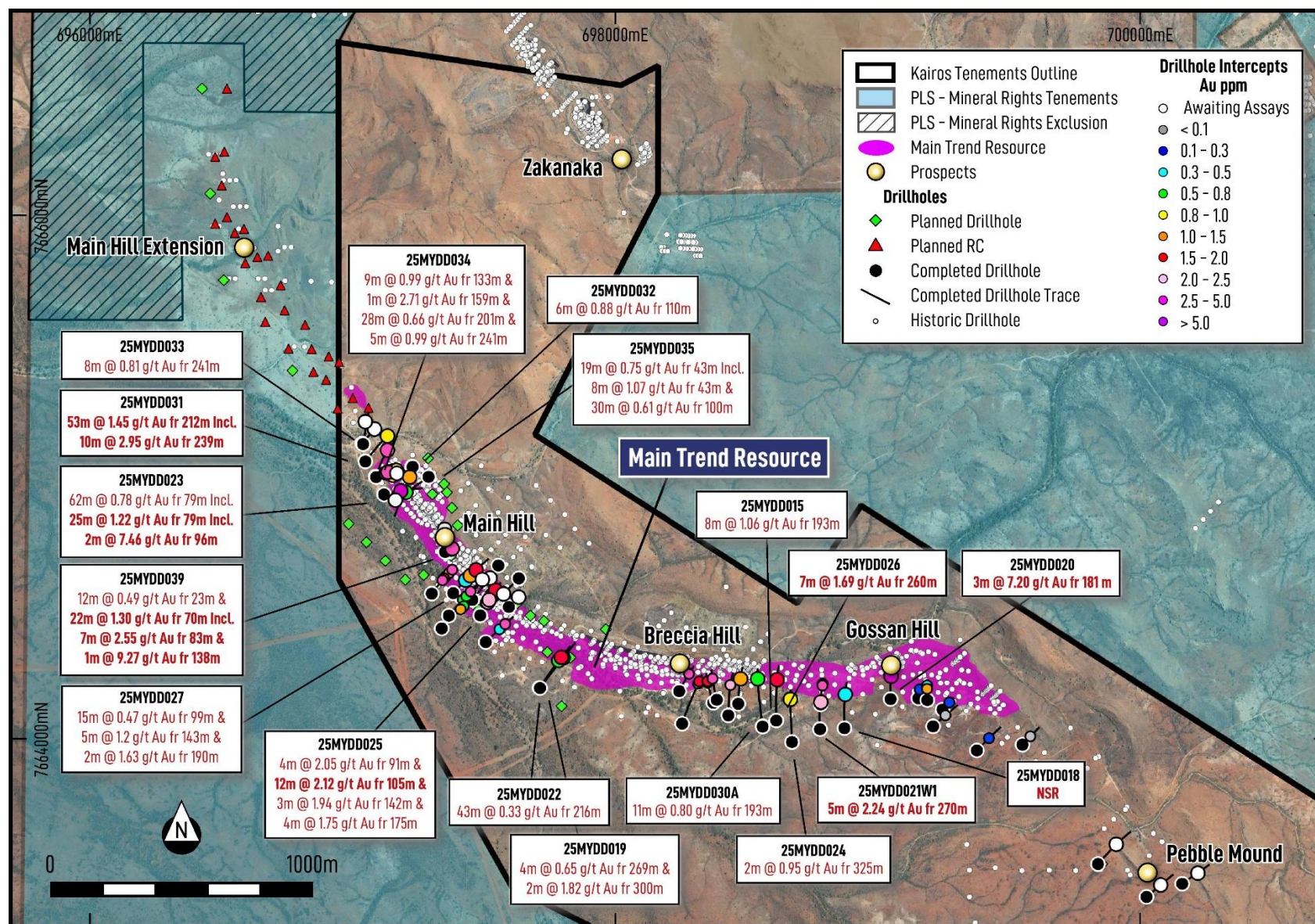


Figure 2. Diamond drilling results at Main Trend. Tenement M45/1306 covers the Main Trend Resource. All results are from the current release.

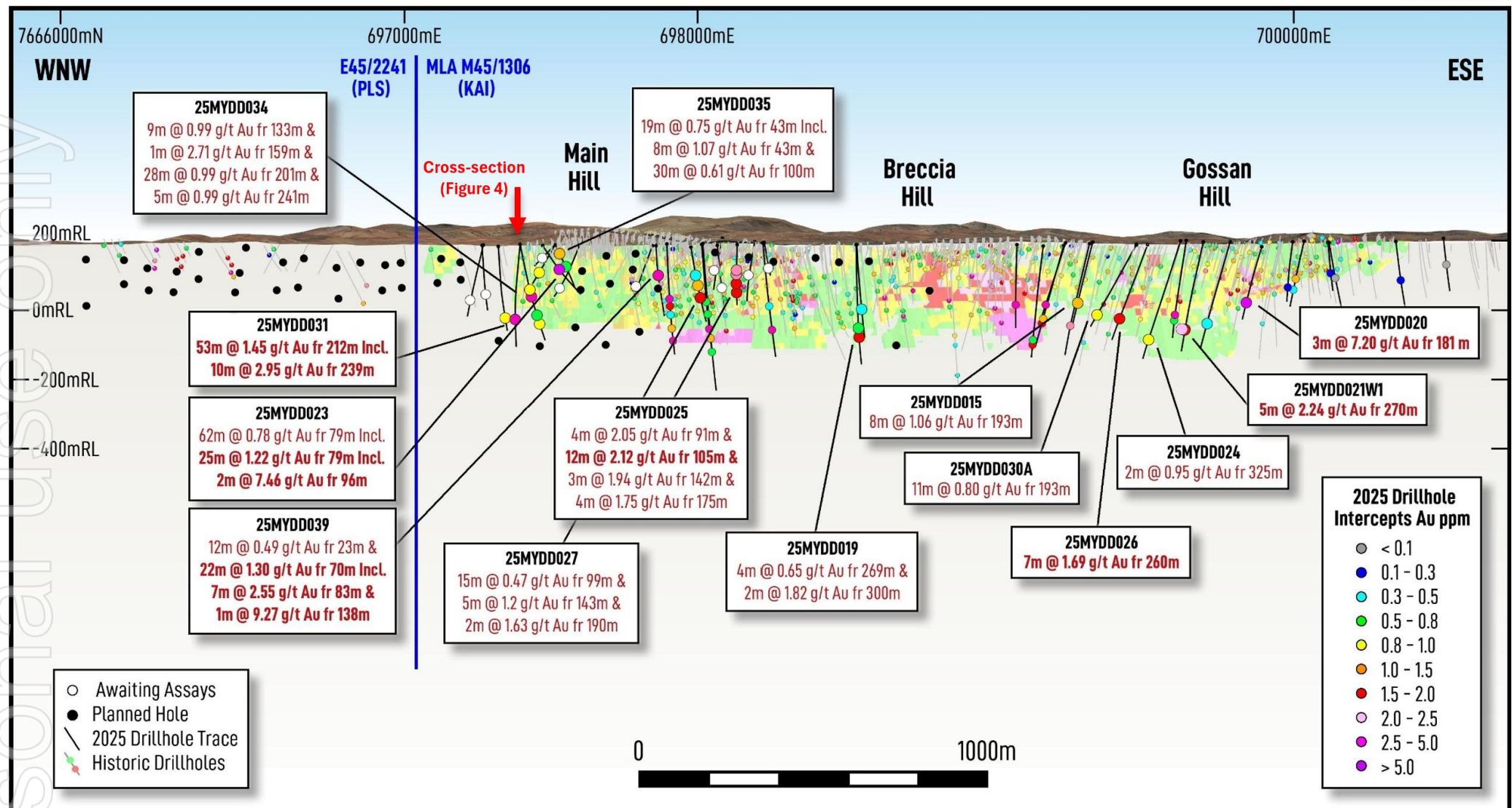


Figure 3. Long-section of the Mt York Gold Deposit (looking 030 NNE) and extension on PLS licence E45/2241 (far left of figure). The intercepts shown are desurveyed, downhole intercepts on the projected drill string. Background image is the resource model filtered for indicated and inferred mineralisation that is >0.5 g/t Au. Note that the Main Hill Extension mineralisation on the PLS licence (far left of figure) is not included in the Kairos resource model. Drilling on PLS licence E45/2241 is subject to finalising a mineral rights agreement with PLS and then fulfilling relevant terms and conditions thereunder. Current drilling intercepts shown as large, coloured circles

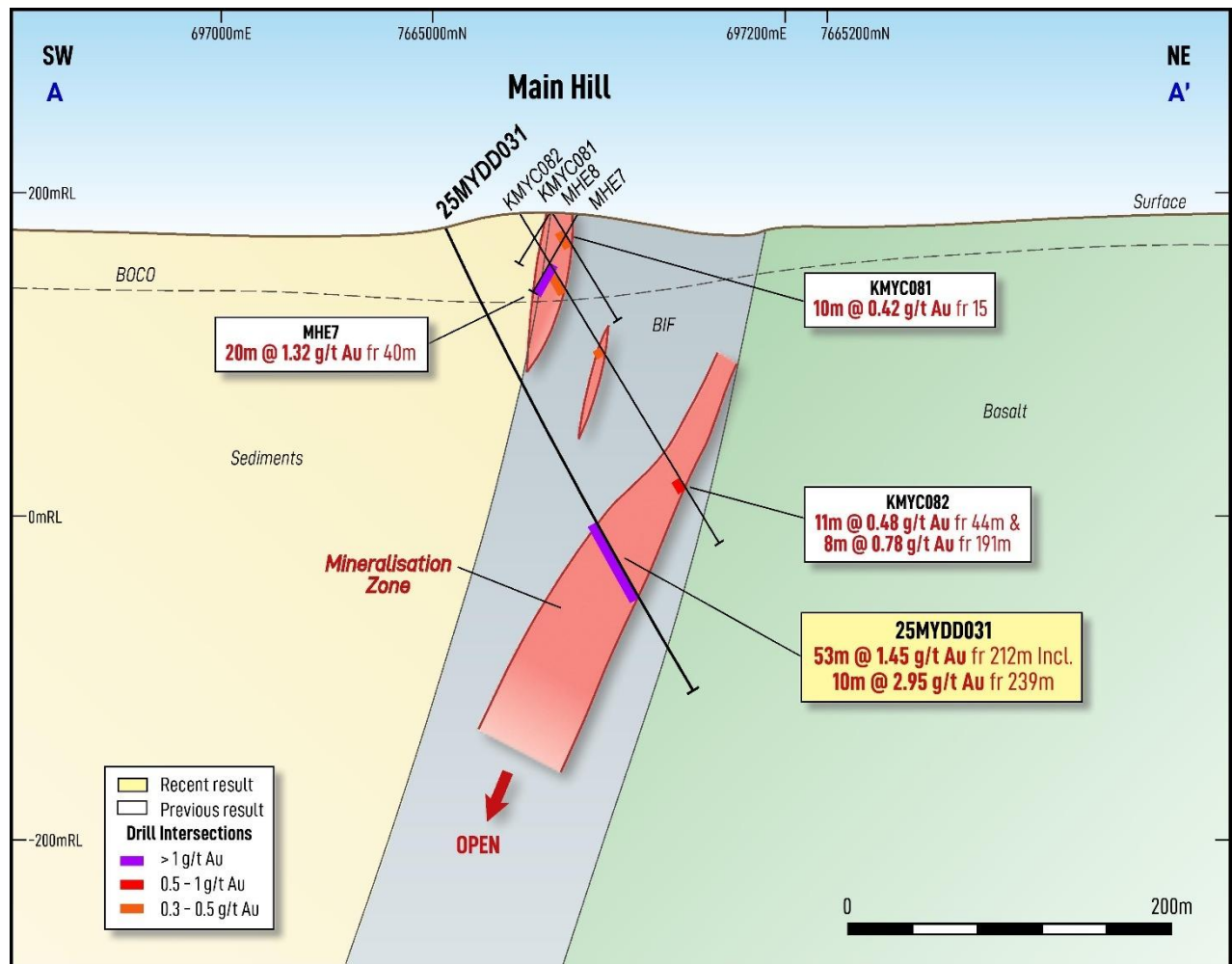


Figure 4. Cross-section at the 'Monster Zone' looking NW. See **Figure 3** for section location.

Table 1. Drill hole coordinates, details and results.

| HoleID | Prospect | Easting | Northing | RL | Azi | Dip | Hole Depth | Hole | From | To | Interval | Grade |
|-------------|--------------|---------|----------|-----|---------|---------|------------|------|---------------------------|------------|-----------|-------------|
| | | MGA94 | MGA94 | (m) | Degrees | Degrees | (m) | Type | (m) | (m) | (m) | g/t Au |
| 25MYDD015 | Breccia Hill | 698471 | 7664135 | 190 | 0 | -65 | 279.9 | DD | 193 | 201 | 8 | 1.06 |
| including | | | | | | | | | 198 | 200 | 2 | 2.77 |
| 25MYDD018 | Gossan Hill | 698876 | 7664042 | 191 | 0 | -62 | 348.8 | DD | No significant intercepts | | | |
| 25MYDD019 | Breccia Hill | 697712 | 7664196 | 183 | 34 | -64 | 394.1 | DD | 269 | 273 | 4 | 0.65 |
| and | | | | | | | | | 300 | 302 | 2 | 1.82 |
| 25MYDD020 | Gossan Hill | 699052 | 7664153 | 177 | 0 | -61 | 237.8 | DD | 181 | 184 | 3 | 7.20 |
| 25MYDD021 | Gossan Hill | 698783 | 7664038 | 191 | 0 | -68 | 272.5 | DD | 271 | 275.6 | 4.6 | 1.52 |
| 25MYDD021W1 | Gossan Hill | 698783 | 7664038 | 191 | 0 | -68 | 339.7 | DD | 270 | 275 | 5 | 2.24 |
| 25MYDD022 | Breccia Hill | 697714 | 7664195 | 183 | 38 | -55 | 342.8 | DD | 216 | 259 | 43 | 0.33 |
| including | | | | | | | | | 234 | 235 | 1 | 2.00 |
| including | | | | | | | | | 254 | 255 | 1 | 2.55 |
| 25MYDD023 | Main Hill | 697119 | 7664933 | 180 | 76 | -47 | 201.7 | DD | 79 | 141 | 62 | 0.78 |
| including | | | | | | | | | 79 | 104 | 25 | 1.22 |
| including | | | | | | | | | 96 | 98 | 2 | 7.46 |
| 25MYDD024 | Gossan Hill | 698676 | 7663989 | 194 | 0 | -61 | 391 | DD | 325 | 327 | 2 | 0.95 |
| and | | | | | | | | | 339 | 342 | 3 | 0.59 |
| 25MYDD025 | Main Hill | 697486 | 7664472 | 183 | 30 | -50 | 225.5 | DD | 91 | 95 | 4 | 2.05 |
| and | | | | | | | | | 105 | 117 | 12 | 2.12 |
| and | | | | | | | | | 134 | 145 | 11 | 0.82 |
| including | | | | | | | | | 142 | 145 | 3 | 1.94 |
| and | | | | | | | | | 175 | 179 | 4 | 1.75 |
| 25MYDD026 | Gossan Hill | 698616 | 7664071 | 183 | 0 | -55 | 342.5 | DD | 260 | 267 | 7 | 1.69 |
| 25MYDD027 | Main Hill | 697383 | 7664557 | 176 | 45 | -50 | 282.5 | DD | 99 | 114 | 15 | 0.47 |
| and | | | | | | | | | 126 | 133 | 7 | 0.43 |
| and | | | | | | | | | 143 | 148 | 5 | 1.22 |
| including | | | | | | | | | 146 | 147 | 1 | 3.63 |
| and | | | | | | | | | 153 | 159 | 6 | 0.72 |
| including | | | | | | | | | 156 | 157 | 1 | 2.35 |
| and | | | | | | | | | 175 | 179 | 4 | 0.94 |
| and | | | | | | | | | 190 | 192 | 2 | 1.63 |
| 25MYDD028 | Main Hill | 697226 | 7665039 | 182 | 250 | -30 | 119.6 | DD | Awaiting assays | | | |
| 25MYDD029 | Breccia Hill | 697456 | 7664531 | 181 | 38 | -50 | 251.8 | DD | Awaiting assays | | | |
| 25MYDD030 | Gossan Hill | 698564 | 7664049 | 182 | 350 | -50 | 62.6 | DD | Not assayed | | | |
| 25MYDD030A | Gossan Hill | 698564 | 7664048 | 184 | 350 | -50 | 321.8 | DD | 268 | 279 | 11 | 0.80 |
| 25MYDD031 | Main Hill | 697087 | 7665001 | 180 | 20 | -64 | 334.3 | DD | 212 | 265 | 53 | 1.45 |
| including | | | | | | | | | 239 | 249 | 10 | 2.95 |
| 25MYDD032 | Main Hill | 697226 | 7665039 | 182 | 250 | -45 | 159.1 | DD | 110 | 116 | 6 | 0.88 |
| 25MYDD033 | Main Hill | 697048 | 7665059 | 178 | 40 | -60 | 286.5 | DD | 241 | 249 | 8 | 0.81 |
| 25MYDD034 | Main Hill | 697089 | 7664999 | 180 | 70 | -70 | 295.4 | DD | 133 | 142 | 9 | 0.99 |
| and | | | | | | | | | 159 | 160 | 1 | 2.71 |

| HoleID | Prospect | Easting | Northing | RL | Azi | Dip | Hole Depth | Hole | From | To | Interval | Grade |
|-----------|--------------|---------|----------|-----|---------|---------|------------|------|-----------------|-----------|-----------|-------------|
| | | MGA94 | MGA94 | (m) | Degrees | Degrees | (m) | Type | (m) | (m) | (m) | g/t Au |
| and | | | | | | | | | 169 | 172 | 3 | 0.77 |
| and | | | | | | | | | 201 | 229 | 28 | 0.68 |
| and | | | | | | | | | 241 | 246 | 5 | 0.99 |
| 25MYDD035 | Main Hill | 697228 | 7665038 | 194 | 200 | -33 | 235 | DD | 43 | 62 | 19 | 0.75 |
| including | | | | | | | | | 43 | 51 | 8 | 1.07 |
| and | | | | | | | | | 100 | 130 | 30 | 0.61 |
| 25MYDD036 | Pebble Mound | 699843 | 7663524 | 202 | 44 | -60 | 303.4 | DD | Awaiting assays | | | |
| 25MYDD037 | Main Hill | 697633 | 7664613 | 191 | 225 | -50 | 220 | DD | Awaiting assays | | | |
| 25MYDD038 | Pebble Mound | 700028 | 7663399 | 204 | 50 | -60 | 258.9 | DD | Awaiting assays | | | |
| 25MYDD039 | Main Hill | 697365 | 7664715 | 170 | 44 | -79 | 208.2 | DD | 0 | 4 | 4 | 0.70 |
| and | | | | | | | | | 23 | 35 | 12 | 0.49 |
| and | | | | | | | | | 70 | 92 | 22 | 1.30 |
| including | | | | | | | | | 83 | 90 | 7 | 2.55 |
| and | | | | | | | | | 138 | 139 | 1 | 9.27 |
| 25MYDD040 | Pebble Mound | 700029 | 7663396 | 207 | 55 | -60 | 247 | DD | Awaiting assays | | | |
| 25MYDD041 | Main Hill | 697289 | 7665000 | 192 | 235 | -45 | 249.1 | DD | Awaiting assays | | | |
| 25MYDD042 | Main Hill | 697352 | 7664714 | 192 | 0 | -55 | 192.8 | DD | Awaiting assays | | | |
| 25MYDD043 | Main Hill | 697036 | 7665127 | 162 | 40 | -65 | 210.8 | DD | Awaiting assays | | | |
| 25MYDD044 | Breccia Hill | 697555 | 7664662 | 201 | 225 | -50 | 192.65 | DD | Awaiting assays | | | |
| 25MYDD045 | Main Hill | 697039 | 7665125 | 182 | 10 | -60 | 237.8 | DD | Awaiting assays | | | |
| 25MYDD047 | Main Hill | 697595 | 7664504 | 189 | 45 | -50 | 123.7 | DD | Awaiting assays | | | |

About Kairos Minerals

Kairos Minerals (ASX:KAI) owns 100% of the flagship 1.4 Moz **Mt York Gold Project** that was partially mined by Lynas Gold NL between 1994 and 1998. Kairos has recognised that the resource has significant potential to grow further from its current 1.4 Moz base with significant exploration potential existing within the Mt York '**Main Trend**' and its extension towards the northwest where Kairos owns the mineral rights for gold. Scoping study results point to a robust, open-cut mining operation processing 4Mtpa of free-milling mineralisation over eight years. The next steps are to drill the extensions of Main Trend and nearby gold prospects for resource increases whilst targeting near-surface, high-grade shoots to further improve the project economics.

During the resource expansion work, Kairos will collect important additional information to fine-tune metallurgical processing, geotechnical engineering and mine scheduling for further development studies. Current resources at a 0.5 g/t Au cutoff grade above 325m depth are shown in the table below.

| Deposit | Indicated | | | Inferred | | | Total | | |
|--------------|--------------|-------------|---------------|--------------|-------------|---------------|--------------|-------------|---------------|
| | Tonnes (MT) | Au (g/t) | Ounces (kozs) | Tonnes (MT) | Au (g/t) | Ounces (kozs) | Tonnes (MT) | Au (g/t) | Ounces (kozs) |
| Main Trend | 20.25 | 1.06 | 690 | 22.83 | 0.95 | 697 | 43.08 | 1.00 | 1,385 |
| Total | 20.25 | 1.06 | 690 | 22.83 | 0.95 | 697 | 43.08 | 1.00 | 1,385 |

Kairos's 100%-owned Roe Hills Project, located 120km east of Kalgoorlie in WA's Eastern Goldfields, comprises an extensive tenement portfolio where the Company's exploration work has confirmed the potential for significant discoveries of high-grade gold, nickel, cobalt and importantly, rare earth element (REE) mineralisation. A 2023 drilling program at Black Cat intercepted significant, clay-hosted REE mineralisation.

This announcement has been authorised for release by the Board.

Peter Turner
Managing Director

Simon Lill
Non-Executive Chairman

For investor information, please contact

Nathan Ryan – NWR Communications
0420 582 887

COMPETENT PERSON STATEMENT:

The information in this report that relates to Exploration Results is based on and fairly represents information compiled and reviewed by Mr Mark Falconer, who is a full-time employee of Kairos Minerals Ltd and who is also a Member of the Australian Institute of Geoscientists (AIG). Mr Falconer has sufficient experience that is relevant to the style of mineralisation and type of deposits under consideration and to the activity which they are undertaking to qualify as Competent Persons as defined in the 2012 Edition of the 'Australasian Code for Reporting of Exploration Results, Mineral Resources and Ore Reserves.' (the JORC Code 2012). Mr Falconer has provided his prior written consent to the inclusion in the report of the matters based on their information in the form and context in which it appears.

The information in this report that relates to Mineral Resources is based on information compiled and reviewed by Christopher Speedy a fulltime employee of Encompass Mining Consultants who is also a Member of the Australian Institute of Geoscientists (AIG). Mr Speedy has sufficient experience that is relevant to the style of mineralisation and type of deposits under consideration and to the activity which they are undertaking to qualify as Competent Persons as defined in the 2012 Edition of the 'Australasian Code for Reporting of Exploration Results, Mineral Resources and Ore Reserves.' (the JORC Code 2012). The Resource Estimation has been prepared independently in accordance with the JORC Code. Mr Speedy has no vested interest in Kairos Minerals or its related parties, or to any mineral properties included in this report. Fees for the report are being levied at market rates and are in no way contingent upon the results. Mr Speedy has consented to the inclusion in the report of the matters based on their information in the form and context in which it appears.

The Mineral Resources were first reported in the announcement dated 15 May 2023 (Announcement) and subsequently updated in an announcement dated 5 September 2024. The Company confirms that it is not aware of any new information or data that materially affects the information included in the Announcement and, in the case of estimates of mineral resources, that all material assumptions and technical parameters underpinning the estimates continue to apply and have not materially changed.

Appendix A - JORC Code, 2012 Edition – Table 1

Section 1 Sampling Techniques and Data

| Criteria | JORC Code explanation | Commentary |
|------------------------------|---|--|
| Sampling techniques | <ul style="list-style-type: none"> Nature and quality of sampling (eg cut channels, random chips, or specific specialised industry standard measurement tools appropriate to the minerals under investigation, such as down hole gamma sondes, or handheld XRF instruments, etc). These examples should not be taken as limiting the broad meaning of sampling. Include reference to measures taken to ensure sample representivity and the appropriate calibration of any measurement tools or systems used. Aspects of the determination of mineralisation that are Material to the Public Report. In cases where 'industry standard' work has been done this would be relatively simple (eg 'reverse circulation drilling was used to obtain 1 m samples from which 3 kg was pulverised to produce a 30 g charge for fire assay'). In other cases more explanation may be required, such as where there is coarse gold that has inherent sampling problems. Unusual commodities or mineralisation types (eg submarine nodules) may warrant disclosure of detailed information. | <ul style="list-style-type: none"> Sampling was undertaken using diamond drilling All drilling and sampling was undertaken using industry standard methods. Diamond drilling depths and run lengths were measured and recorded by the driller and written on core blocks and inserted into the core trays. Rod counts were conducted to verify drill hole and sample depths Diamond drill core was logged geologically, marked up for sampling, and photographed. Samples were selected on nominal 1m intervals in and around mineralised zones, with variations to interval lengths based on geological boundaries. Sampling was carried out under Kairos Minerals sampling protocols and QAQC procedures. The samples are considered representative and appropriate for the methods of drilling used. Diamond core samples were assayed for gold by Photon Assay at Intertek Genalysis Laboratory in Perth. |
| Drilling techniques | <ul style="list-style-type: none"> Drill type (eg core, reverse circulation, open-hole hammer, rotary air blast, auger, Bangka, sonic, etc) and details (eg core diameter, triple or standard tube, depth of diamond tails, face-sampling bit or other type, whether core is oriented and if so, by what method, etc). | <ul style="list-style-type: none"> Diamond drilling was conducted using HQ3 diameter (61mm) drilling to fresh rock with NQ2 diameter (51mm) drilling for the remainder of the hole. All NQ drill core is oriented using orientation tools at the drill site and then joined and marked up by Kairos field personnel. |
| Drill sample recovery | <ul style="list-style-type: none"> Method of recording and assessing core and chip sample recoveries and results assessed. Measures taken to maximise sample recovery and ensure representative nature of the samples. Whether a relationship exists between sample recovery and grade and whether sample bias may have | <ul style="list-style-type: none"> Sample recovery was routinely close to 100% recovery through the main banded iron formation mineralised host rock Weathered material near the top of holes had varying recoveries but was generally >85% with care taken to maximise recovery. Drill core recovery is measured for each drilling run by the driller and recorded on core blocks inserted into the core trays. |

| Criteria | JORC Code explanation | Commentary |
|---|--|--|
| | <i>occurred due to preferential loss/gain of fine/coarse material.</i> | <p>These measurements are verified by the geological staff during the mark up and logging process by physical measurement with a tape measure.</p> <ul style="list-style-type: none"> No sample bias has been observed. |
| Logging | <ul style="list-style-type: none"> <i>Whether core and chip samples have been geologically and geotechnically logged to a level of detail to support appropriate Mineral Resource estimation, mining studies and metallurgical studies.</i> <i>Whether logging is qualitative or quantitative in nature. Core (or costean, channel, etc) photography.</i> <i>The total length and percentage of the relevant intersections logged.</i> | <ul style="list-style-type: none"> All drill core is geologically logged by company geologists using the Kairos Minerals logging scheme. Logging of diamond core records colour, lithology, grain size, structure, mineralogy, alteration, weathering, rock quality and various other features of the samples. All holes were logged in full. All diamond core was photographed both dry and wet in core trays after logging and prior to cutting and sampling. |
| Sub-sampling techniques and sample preparation | <ul style="list-style-type: none"> <i>If core, whether cut or sawn and whether quarter, half or all core taken.</i> <i>If non-core, whether riffled, tube sampled, rotary split, etc and whether sampled wet or dry.</i> <i>For all sample types, the nature, quality and appropriateness of the sample preparation technique.</i> <i>Quality control procedures adopted for all sub-sampling stages to maximise representivity of samples.</i> <i>Measures taken to ensure that the sampling is representative of the in situ material collected, including for instance results for field duplicate/second-half sampling.</i> <i>Whether sample sizes are appropriate to the grain size of the material being sampled.</i> | <ul style="list-style-type: none"> NQ and HQ drill core samples is cut in half, with half core samples submitted for analysis and the other half retained on site in core trays. Half core drill samples typically ranged in weight from 2.7kg – 3.6kg. All drill core cutting is conducted at the Mt York project site. Samples are prepared at Intertek Genalysis in Perth for PhotonAssay. Samples are dried and crushed to 3mm. A >500g split is created from the 3mm crushed material and placed in sample jars for the PhotonAssay process All remaining crushed material is bagged retained for future use if required Sample sizes are considered appropriate for the material sampled. |
| Quality of assay data and laboratory tests | <ul style="list-style-type: none"> <i>The nature, quality and appropriateness of the assaying and laboratory procedures used and whether the technique is considered partial or total.</i> <i>For geophysical tools, spectrometers, handheld XRF instruments, etc, the parameters used in determining the analysis including instrument make and model, reading times, calibrations factors applied and their derivation, etc.</i> <i>Nature of quality control procedures adopted (eg standards, blanks, duplicates, external laboratory checks)</i> | <ul style="list-style-type: none"> Samples were analysed by Intertek Genalysis in Perth. The analytical method used for gold analysis is PhotonAssay with laboratory code PAAU02 and a quoted detection range of limit of 0.03ppm – 350ppm Au. PhotonAssay provides non-destructive analysis of a larger volume of sample material, is considered appropriate for the nature of the material and mineralisation, and is a well-established method within the gold industry PhotonAssay results are periodically verified with a parallel 50g fire assay conducted on |

| Criteria | JORC Code explanation | Commentary |
|--|---|---|
| | <i>and whether acceptable levels of accuracy (ie lack of bias) and precision have been established.</i> | <p>the same sample material to provide further QAQC information. Fire assay results received to date have been in line with PhotonAssay results and have not identified any systematic bias between the two methods.</p> <ul style="list-style-type: none"> • A 48-element analysis is conducted on diamond samples at a minimum rate of 1:10 samples using Intertek Genalysis method 4A/MS48 involving a four-acid digest and ICP-MS and ICP-OES finish • Certified standards and blanks were regularly inserted into the sample sequence at a minimum rate of 1:25 for standards and 1:25 for blanks to assess the accuracy of the analysis method. • The laboratory performed regular performance checks through analysis of internal laboratory standards, repeats, and control blanks. • QAQC performance was monitored by Kairos staff with action taken with the laboratory if required. • Acceptable levels of accuracy and precision have been established through monitoring and assessment of QAQC performance. |
| Verification of sampling and assaying | <ul style="list-style-type: none"> • <i>The verification of significant intersections by either independent or alternative company personnel.</i> • <i>The use of twinned holes.</i> • <i>Documentation of primary data, data entry procedures, data verification, data storage (physical and electronic) protocols.</i> • <i>Discuss any adjustment to assay data.</i> | <ul style="list-style-type: none"> • Significant mineralised intersections were checked by the Exploration Manager and validated against the drill core and logging. Additional checks were performed by other members of the Kairos geology team. • No twinned drillholes were completed for this program. • All assay and geological data is stored in an electronic Micromine Geobank database on a secure Microsoft Azure cloud server. • Primary laboratory data is emailed directly to the company's database administrator for upload directly into the company database. • Laboratory data is also provided as a .pdf file for verification of original data files • Results are checked and verified by company geologists. • No adjustments have been made to the assay data. • Assay intersections are reported on a length-weighted basis. |
| Location of data points | <ul style="list-style-type: none"> • <i>Accuracy and quality of surveys used to locate drill holes (collar and down-hole surveys), trenches, mine workings and</i> | <ul style="list-style-type: none"> • Diamond collar locations were set out using handheld GPS, with an accuracy of +/- 5m in both easting and northing. |

| Criteria | JORC Code explanation | Commentary |
|--|--|---|
| | <p><i>other locations used in Mineral Resource estimation.</i></p> <ul style="list-style-type: none"> • <i>Specification of the grid system used.</i> • <i>Quality and adequacy of topographic control.</i> | <ul style="list-style-type: none"> • Diamond collars were surveyed post-drilling with handheld GPS immediately post-drilling. • Collars will eventually be surveyed with DGPS system operated by a qualified surveyor supplied by an external survey company, with expected accuracies of +/- 20mm horizontally and +/- 30mm vertically prior to updating the resource model. • Downhole surveys were completed on all drill holes using Axis north-seeking gyro survey instruments. • All location data is recorded in GDA94 MGA Zone 50. • Topographic control is through a DTM generated through stereoscopic photogrammetry of 5cm resolution aerial imagery. The accuracy of the DTM is estimated as better than 0.5m in elevation. |
| Data spacing and distribution | <ul style="list-style-type: none"> • <i>Data spacing for reporting of Exploration Results.</i> • <i>Whether the data spacing and distribution is sufficient to establish the degree of geological and grade continuity appropriate for the Mineral Resource and Ore Reserve estimation procedure(s) and classifications applied.</i> • <i>Whether sample compositing has been applied.</i> | <ul style="list-style-type: none"> • Drill spacing ranges from 100m x 100m for extensional exploration drillholes down-dip and along strike, to broadly 50m x 100m and 50m x 50m for infill and local extensional holes. • The data spacing and distribution is considered appropriate and sufficient to establish the geological and grade continuity required for the anticipated estimation procedures and classifications based on previous drilling, resource modelling and geological work. • No compositing of samples has been applied. |
| Orientation of data in relation to geological structure | <ul style="list-style-type: none"> • <i>Whether the orientation of sampling achieves unbiased sampling of possible structures and the extent to which this is known, considering the deposit type.</i> • <i>If the relationship between the drilling orientation and the orientation of key mineralised structures is considered to have introduced a sampling bias, this should be assessed and reported if material.</i> | <ul style="list-style-type: none"> • Drilling was oriented approximately perpendicular to the strike and dip of mineralisation. • Drill holes were angled between -60° and -75° to provide good intersection angles with mineralisation that dips between -40° to -70°. • No biases have been identified based on drilling angles and known structures. • The drill orientation is considered appropriate and representative. |
| Sample security | <ul style="list-style-type: none"> • <i>The measures taken to ensure sample security.</i> | <ul style="list-style-type: none"> • All samples were collected in the field at the project site in number-coded calico bags and placed within secure, labelled polyweave bags by company field personnel. • All samples were delivered directly to a freight contractor for secure transport to Intertek Genalysis in Perth for final analysis. |

| Criteria | JORC Code explanation | Commentary |
|--------------------------|---|--|
| Audits or reviews | <ul style="list-style-type: none"> The results of any audits or reviews of sampling techniques and data. | <ul style="list-style-type: none"> No audits have been conducted outside of routine QAQC reviews. |

Section 2 Reporting of Exploration Results

| Criteria | JORC Code explanation | Commentary |
|--|--|---|
| Mineral tenement and land tenure status | <ul style="list-style-type: none"> Type, reference name/number, location and ownership including agreements or material issues with third parties such as joint ventures, partnerships, overriding royalties, native title interests, historical sites, wilderness or national park and environmental settings. The security of the tenure held at the time of reporting along with any known impediments to obtaining a licence to operate in the area. | <ul style="list-style-type: none"> The Mt York project comprises 6 Prospecting Licences P45/2987, P45/2989, P45/2990, P45/2991, P45/2994 and P45/2996, overlain by Mining Lease application M45/1306 (as reported to the ASX on 31/01/2023 - 'Quarterly Report for the Period Ending 31 December 2022'). Kairos Minerals Limited owns 100% of the 6 Prospecting Licences and Mining Lease application that define the Mt York Gold Project through its wholly owned subsidiary Mount York Operations Pty Ltd. The security of the tenements is in good standing. The project is located on Wallareenya and Strelley Pastoral Co pastoral leases. Kairos is not aware of any existing impediments nor of any potential impediments which may impact ongoing exploration and development activities. |
| Exploration done by other parties | <ul style="list-style-type: none"> Acknowledgment and appraisal of exploration by other parties. | <ul style="list-style-type: none"> Significant past work has been carried out by other parties including open pit mining of previously defined gold resources. During the early to mid-1970's, the Lynas Find project area was part of a large area held and explored for volcanogenic base metal deposits, initially by McIntyre Mines Pty Ltd, and then by Esso Minerals. Esso completed some induced polarization and ground magnetic geophysical surveys, and some diamond drilling over the area including the Main Trend at Mt York. The Main Trend at Mt York was discovered by Carpentaria Exploration Company Pty Ltd in 1986. Lynas Gold NL acquired the project in the early 1990's and mined a number of deposits as a successful open pit operation by that company between 1994 – 1998. Other companies to have explored the area include Austamax, MIM and Trafford Resources. Significant historical Au exploration including, surface geochemical sampling, airborne and ground electromagnetic geophysical surveys, |

| Criteria | JORC Code explanation | Commentary |
|-------------------------------|---|--|
| Geology | <ul style="list-style-type: none"> <i>Deposit type, geological setting and style of mineralisation.</i> | <p>RAB, AC, RC, and DD drilling. This is acknowledged in past ASX announcements and Company reports.</p> <ul style="list-style-type: none"> The Pilbara Gold Project lies within the East Strelley Greenstone Belt of the Archaean Pilbara Craton. The Pilbara Craton is composed of greenstone and sediment units which have been deformed by tight isoclinal folds during the intrusion of diapiric granites. The Main Trend system at Mt York is a structurally controlled, Banded Iron Formation-hosted orogenic gold deposit situated on the limb of a folded greenstone sequence The Main Trend geology comprises (from NE to SW) – felsic volcanics and cherts, mafic-ultramafic volcanics and amphibolite, banded iron formation (BIF), and fine to coarse-grained classic sediments. The sequence has been metamorphosed to amphibolite facies and has been broadly folded The dominant mineralogy of the BIF consists of magnetite, silica and Fe-rich grunerite amphibole. Gold mineralisation is hosted primarily within the BIF sequence, and is associated with weak to strongly disseminated arsenopyrite and disseminated to massive pyrrhotite associated with visible folding and deformation of the BIF layering. The Gilt Dragon prospect sits within the Euro basalt sequence of mafic-ultramafic greenstones. It is prospective for Mt York-style gold, and VMS base metal mineralisation |
| Drill hole Information | <ul style="list-style-type: none"> <i>A summary of all information material to the understanding of the exploration results including a tabulation of the following information for all Material drill holes:</i> <ul style="list-style-type: none"> <i>easting and northing of the drill hole collar</i> <i>elevation or RL (Reduced Level – elevation above sea level in metres) of the drill hole collar</i> <i>dip and azimuth of the hole</i> <i>down hole length and interception depth</i> | <ul style="list-style-type: none"> All drill hole location, orientation, hole length and interception depth and length information material to the understanding of the exploration results is provided in Table 1 and figures included within the body of this announcement. Information from historic holes drilled by Kairos Minerals at Mt York can be found in previous ASX releases. No drill hole information from the reported program was excluded from this release. |

| Criteria | JORC Code explanation | Commentary |
|---|---|---|
| | <ul style="list-style-type: none"> ○ hole length. • If the exclusion of this information is justified on the basis that the information is not Material and this exclusion does not detract from the understanding of the report, the Competent Person should clearly explain why this is the case. | |
| Data aggregation methods | <ul style="list-style-type: none"> • In reporting Exploration Results, weighting averaging techniques, maximum and/or minimum grade truncations (eg cutting of high grades) and cut-off grades are usually Material and should be stated. • Where aggregate intercepts incorporate short lengths of high grade results and longer lengths of low grade results, the procedure used for such aggregation should be stated and some typical examples of such aggregations should be shown in detail. • The assumptions used for any reporting of metal equivalent values should be clearly stated. | <ul style="list-style-type: none"> • Results are reported as down hole length weighted averages using a 0.3g/t gold minimum cut-off grade. • Reported intercepts may include a maximum of 4m of internal dilution below the 0.3g/t minimum cut-off grade. • No top cuts have been applied to the reporting of the assay results. |
| Relationship between mineralisation widths and intercept lengths | <ul style="list-style-type: none"> • These relationships are particularly important in the reporting of Exploration Results. • If the geometry of the mineralisation with respect to the drill hole angle is known, its nature should be reported. • If it is not known and only the down hole lengths are reported, there should be a clear statement to this effect (eg 'down hole length, true width not known'). | <ul style="list-style-type: none"> • All mineralisation widths for exploration holes are reported as down hole lengths. • Where drilling is not perpendicular to the strike and dip of the mineralisation the true widths are less than down hole widths. |
| Diagrams | <ul style="list-style-type: none"> • Appropriate maps and sections (with scales) and tabulations of intercepts should be included for any significant discovery being reported. These should include, but not be limited to a plan view of drill hole collar locations and appropriate sectional views. | <ul style="list-style-type: none"> • Refer to Figures and Tables provided in the body of this announcement. |
| Balanced reporting | <ul style="list-style-type: none"> • Where comprehensive reporting of all Exploration Results is not practicable, representative reporting of both low and high grades and/or | <ul style="list-style-type: none"> • All verified and validated exploration results received from the drill program at the time of data compilation for this announcement have been reported, including drill holes with low |

| Criteria | JORC Code explanation | Commentary |
|---|--|---|
| | <i>widths should be practiced to avoid misleading reporting of Exploration Results.</i> | grades or no significant intercepts. <ul style="list-style-type: none"> The information reported in considered fair, balanced, and provided in context. |
| Other substantive exploration data | <ul style="list-style-type: none"> <i>Other exploration data, if meaningful and material, should be reported including (but not limited to): geological observations; geophysical survey results; geochemical survey results; bulk samples – size and method of treatment; metallurgical test results; bulk density, groundwater, geotechnical and rock characteristics; potential deleterious or contaminating substances.</i> | <ul style="list-style-type: none"> All meaningful and material exploration data has been included in the body of this document. Samples for further metallurgical test work are to be selected once all assay results have been returned from the program. |
| Further work | <ul style="list-style-type: none"> <i>The nature and scale of planned further work (eg tests for lateral extensions or depth extensions or large-scale step-out drilling).</i> <i>Diagrams clearly highlighting the areas of possible extensions, including the main geological interpretations and future drilling areas, provided this information is not commercially sensitive.</i> | <ul style="list-style-type: none"> Mineralisation at Mt York remains open at depth and along strike and additional diamond drill holes have been planned to extend the known mineralisation. Additional drillholes for metallurgical and geotechnical test work are also being planned. |