

23 June 2025

Fletcher Zone Maiden Mineral Resource of 2.3Moz

Stage 1 Fletcher Resource almost doubles the current Beta Hunt Resource

Perth, Western Australia, 23 June 2025: **Westgold Resources Limited (ASX | TSX: WGX – Westgold or the Company)** is pleased to announce its maiden Mineral Resource Estimate (**MRE**) for the Fletcher Zone at the Beta Hunt mine in the Southern Goldfields of Western Australia.

Stage 1 drilling only tested 1 kilometre of the 2 kilometres of known strike of the Fletcher Zone, with a Stage 2 programme now being planned to test strike and depth extensions (see **Figure 1**).

Highlights

Maiden MRE for Fletcher Zone of 31Mt @ 2.3g/t Au for 2.3Moz Au

Inclusion of Stage 1 Fletcher MRE effectively doubles the September 2024 Beta Hunt Mineral Resource

Stage 1 Fletcher Zone mineralisation extends over a zone up to 500m in width – and 2 km in strike length with a vertical extent in excess of 800m

Significant opportunity for resource extensions

- **MRE drilling tested Stage 1** - the first 1km of the known 2km strike of Fletcher
- **Stage 1 Mineral Resource remains open at depth**

Stage 1 Mineral Resource conversion drilling commenced at Fletcher – targeting a maiden Ore Reserve in FY26

Stage 1 Fletcher Zone - Mineral Resource Estimate			
Classification	Tonnes (t)	Grade (g/t Au)	Ounces (Au)
Measured	0	0.00	0
Indicated	3,708,000	2.5	295,000
Inferred	27,266,000	2.3	2,030,000
Total	30,974,000	2.3	2,325,000

Westgold Managing Director and CEO Wayne Bramwell commented:

“Westgold is rapidly unlocking the value we identified at Beta Hunt. This is a circa 7km long, multi-lode mineralised system that is under-drilled and the Company has delivered a maiden Mineral Resource of 2.3Moz from the Fletcher Zone, from just 1km of Fletcher’s apparent strike.

This result points to the growth potential of Beta Hunt, and while this is a material milestone for Westgold, it is simply the first step on what is likely to be a multi-decade journey for Fletcher in an expanded Beta Hunt mine plan.

Critically, mine life at Beta Hunt today exceeds ten years without any contribution from Fletcher. Mine outputs are lifting from the existing Western Flanks and A Zone mining areas and this improvement provides scope to evaluate the optimum mining and processing strategy for Fletcher, as it represents a transformational opportunity to further expand the scale of Beta Hunt outputs.

Our drill teams are not slowing down. They have commenced drilling to upgrade the current Stage 1 Mineral Resource, targeting a maiden Ore Reserve during FY26 and in addition, are preparing to commence testing the northern ~1km extension of Fletcher in the Stage 2 programme.”

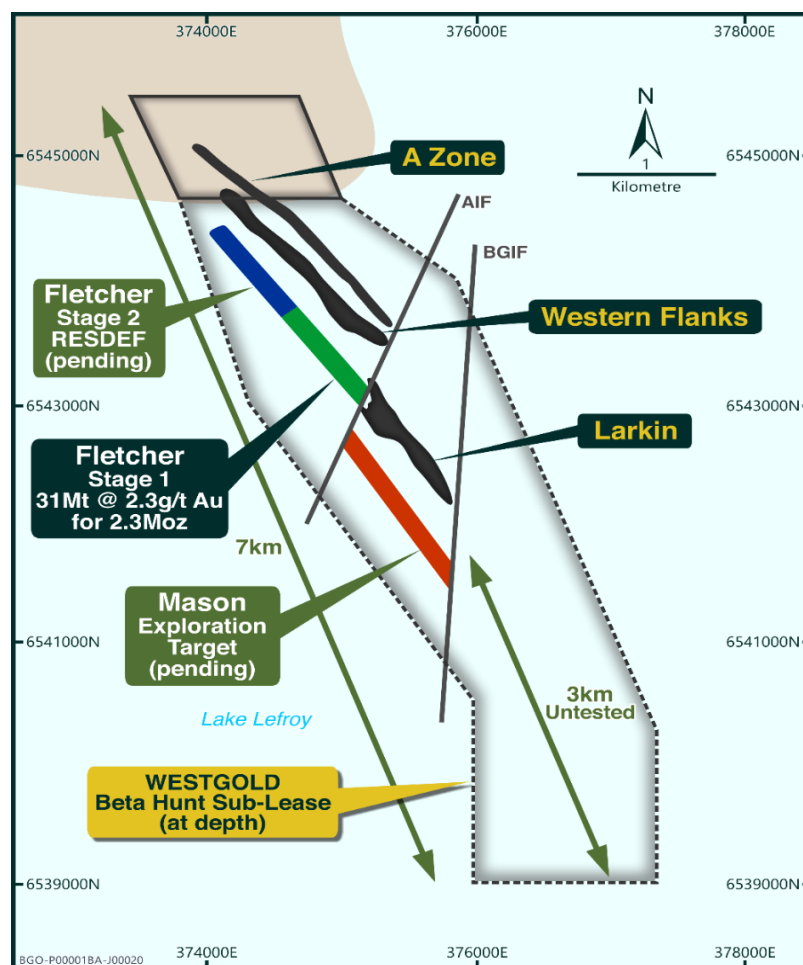


Figure 1 - Plan view schematic of the Fletcher zone at Beta Hunt

Maiden Stage 1 Fletcher Zone Mineral Resource Estimate

In September 2024, Westgold declared a global Fletcher Zone Exploration Target of 23-27Mt @ 2.1-2.5g/t Au for 1.6-2.1Moz, including an initial Stage 1 Exploration Target of 12-16Mt @ 2.1-2.5g/t Au for 0.8-1.2Moz Au¹.

With drilling access to the southern zone of Fletcher established, Westgold undertook an accelerated drilling program aimed at developing a maiden Mineral Resource Estimate for Stage 1 of the Fletcher zone (southern 1km of the 2km strike). The result, which exceeds expectations set out by both the Stage 1 Exploration Target and the Global Exploration Target, are shown in **Table 2** below.

Table 2 – Stage 1 Fletcher Zone Mineral Resource Estimate

Stage 1 Fletcher Zone Mineral Resource Estimate			
Classification	Tonnes (t)	Grade (g/t Au)	Ounces (Au)
Measured	0	0.00	0
Indicated	3,708,000	2.5	295,000
Inferred	27,266,000	2.3	2,030,000
Total	30,974,000	2.3	2,325,000

Background to the Mineral Resource Estimate

The Fletcher Zone is a gold-bearing shear zone located within the Hunt Block of the Beta Hunt Mine at Kambalda (**Figures 1 and 2**), approximately 50 metres west of the Western Flanks vein system. It is interpreted as a parallel, structural analogue to the Western Flanks and A Zone deposits and is considered the third major mineralised shear zone system hosted in the Hunt Block.

Gold mineralisation at Beta Hunt, inclusive of the Fletcher Zone, is located along the crest and flanks of the Kambalda Anticline and is controlled by northwest-trending, steep, southwest-dipping shear zones associated with re-activated normal faults that previously controlled the komatiitic channel flow and associated nickel sulphide deposits for which Kambalda is famous.

Gold mineralisation is interpreted as a D₃ extensional event associated with porphyry intrusives, the source of magmatic hydrothermal fluids carrying the gold.

¹ Refer to ASX release titled "Fletcher Exploration Target Defined at 1.6 - 2.1Moz Au" – 16 September 2024

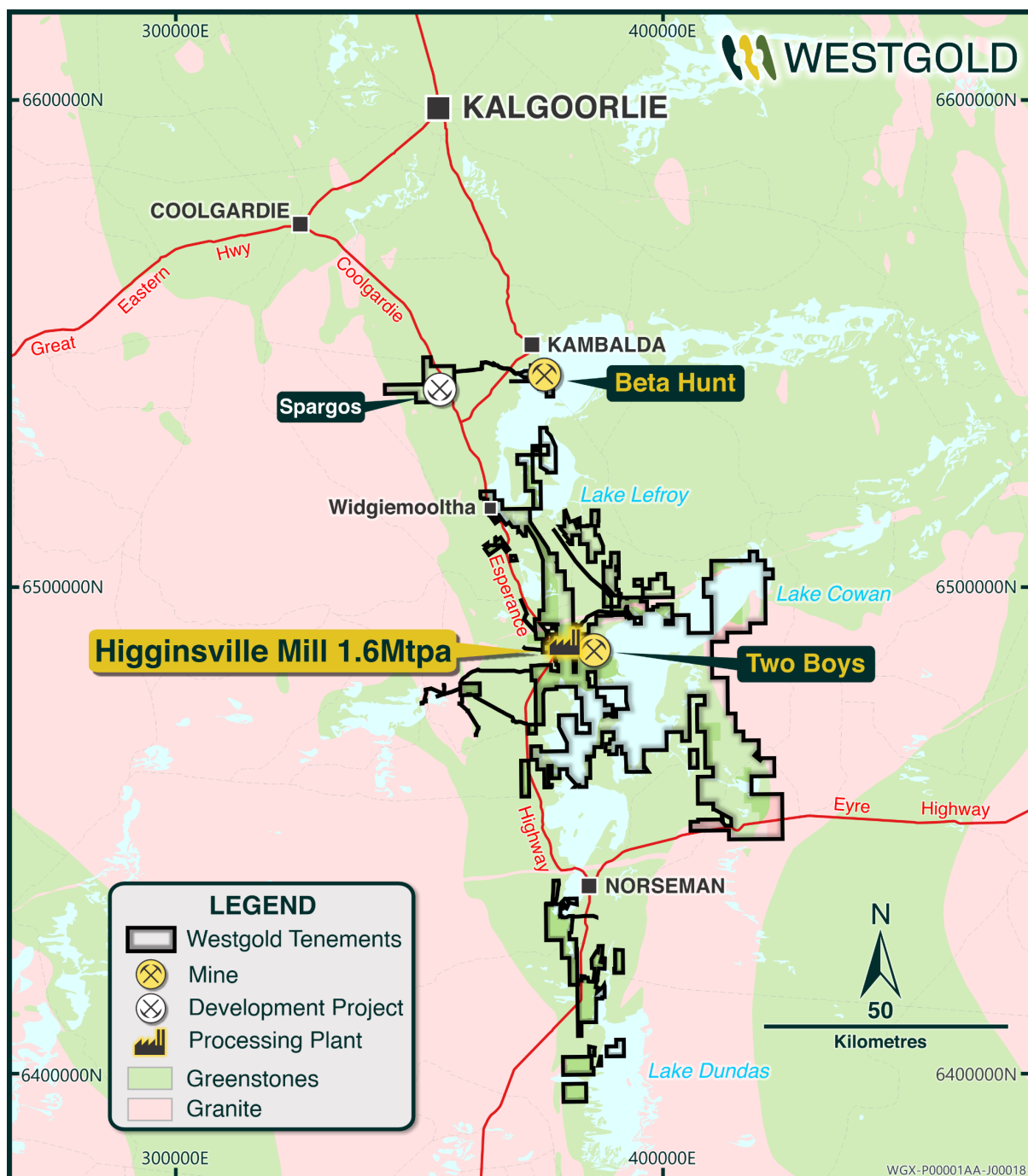


Figure 2 – Westgold's Southern Goldfields operations overview.

Mineralisation is hosted predominantly in Lunnon Basalt with minor amounts associated with specific porphyry intrusives. Gold mineralisation occurs in broad, steeply dipping, north-northwest striking quartz vein systems with biotite-albite-pyrite alteration.

Mineralisation at Stage 1 Fletcher comprises a main, northwest-striking (320°), steep southwest dipping collection of shear zones extending over a zone **up to 500m in width, over 2 km in strike length with a vertical extent in excess of 800 m.**

The zone remains open to the north and down dip (see **Figures 3 and 4**).

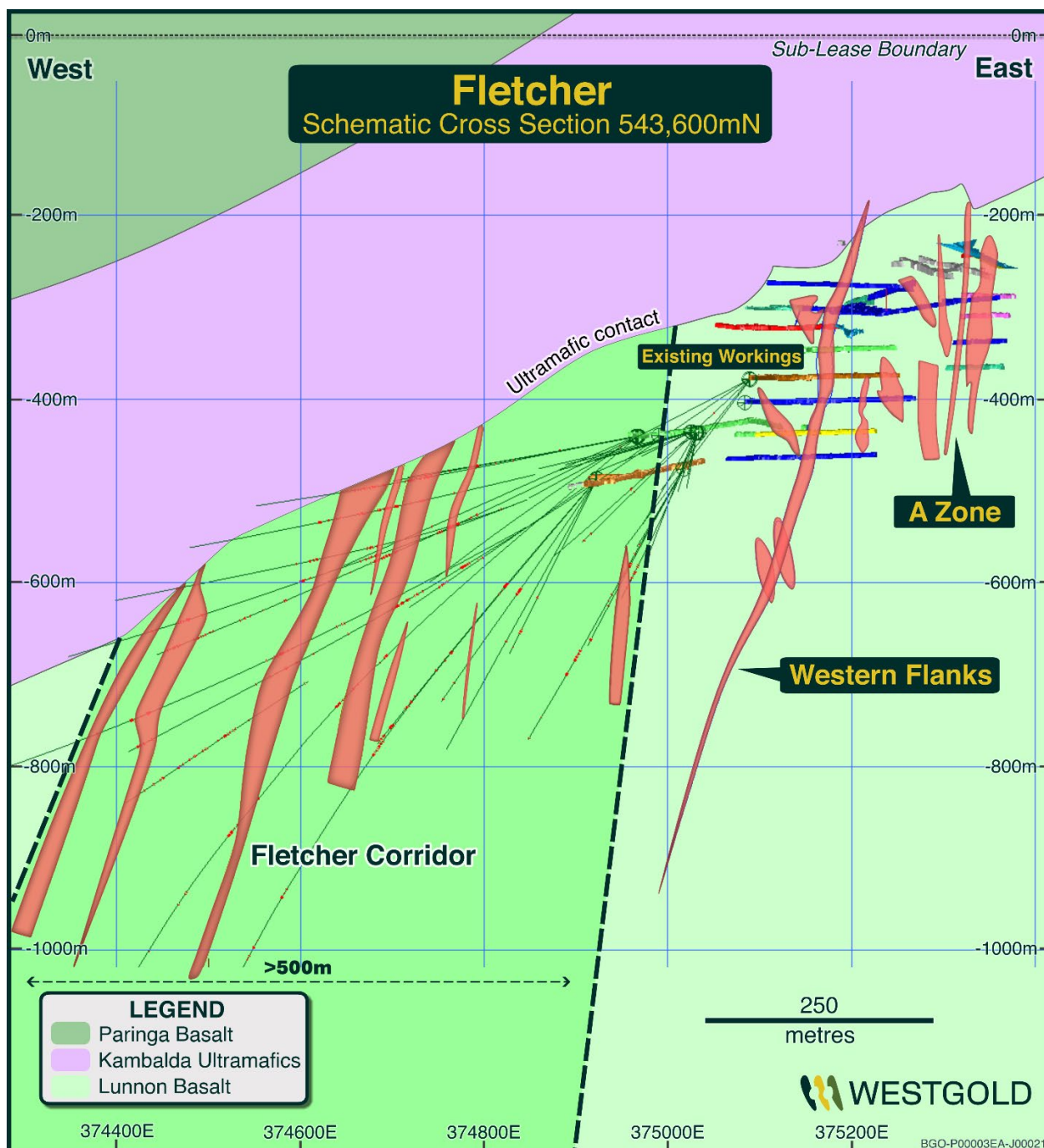


Figure 3 – Fletcher schematic cross-section.

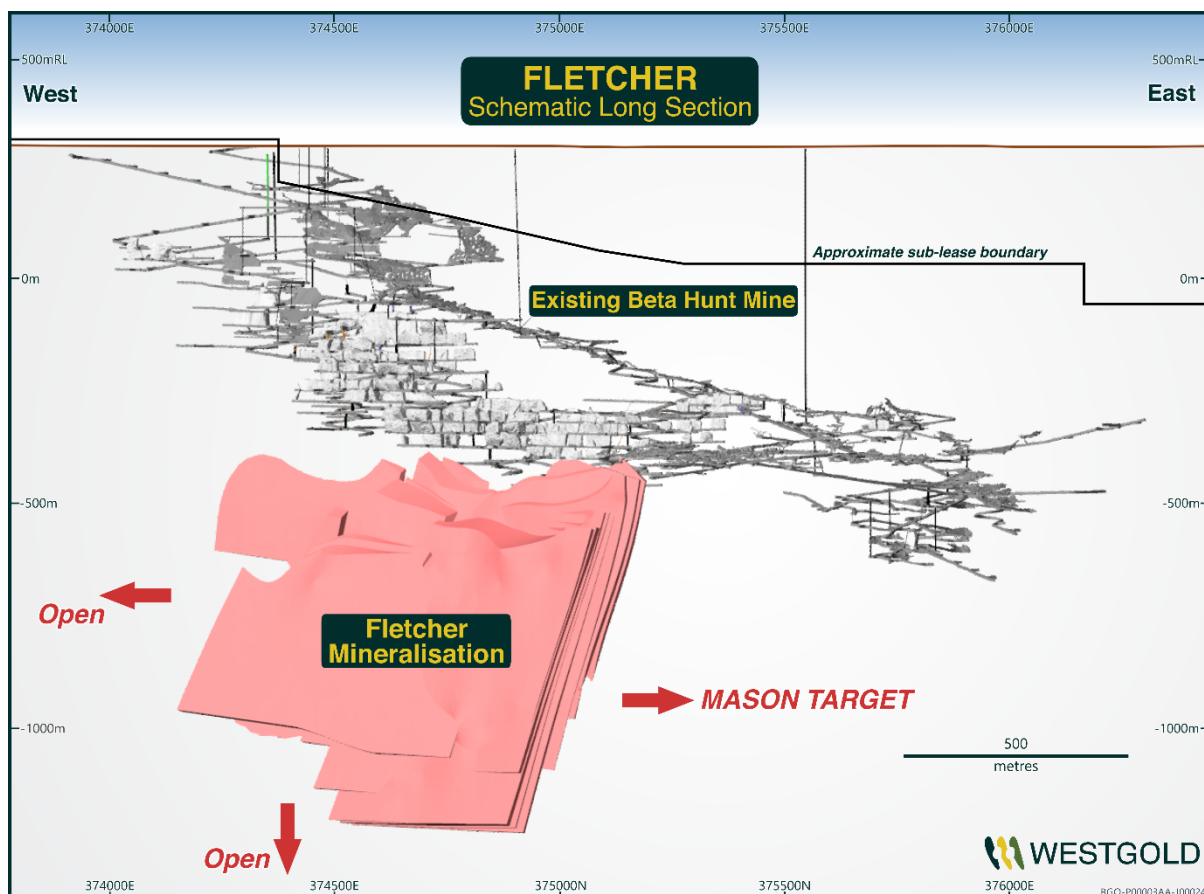


Figure 4 – Fletcher schematic long-section showing Stage 1 area mineralisation

Estimation Methodology

The maiden Fletcher Mineral Resource Estimation was completed internally by Westgold personnel. The Mineral Resource Estimation involved the following steps:

- Database compilation and verification of drill hole survey data and collar locations;
- Construction of wireframe models for cross-cutting faults, host rock types and mineralisation domains (with interpreted shapes for faults modelled prior to the host lithologies, due to the faults disrupting stratigraphy and mineralisation);
- Data conditioning (compositing assays and capping of extreme grades) for geostatistical analysis and variogram modelling;
- Block modelling and grade interpolation, with all domains estimated using the Ordinary Kriging (**OK**) method; and
- Mineral Resource classification and validation.

The gold Mineral Resources have been reported at a cut-off grade of 1.2 g/t based on prevailing operational practice at Beta Hunt.

Gold mineralisation at Beta Hunt is predominantly hosted in steeply dipping shears within basalt host rock. These shears are orientated sub-parallel / oblique to porphyritic intrusives that are more competent than the surrounding basalts and where present, meta-sediments.

Fault zones offset rock strata small distances (5 m offsets are common, however, 10 m to 20 m offsets do occur) and post-date mineralisation. Modelling of mineralised domains was accomplished after modelling cross-cutting faults (first) and host rock types (second) in order to correctly depict the architecture of the mineralisation.

For the construction of the gold mineralisation domains, drill hole cross-sections were evaluated at intervals matching drill hole spacing. All available assay, lithology and structural data from the drill hole logs was examined to define mineralised zones. Margins of logged intervals that include mineralised shears / penetrative foliation in drill core logs were used to delineate the margins of mineralised shear domains. A geological approach for determining the margins of mineralised shear domains often captures intervals of low grade or waste within the interpreted domains.

Mineralisation domains were identified using geological characteristics (shear intensity, biotite and / or pyrite alteration and logged veining intensity and style), orientation of logged structures and assay grades. There are three principal styles of gold mineralisation at Beta Hunt:

- **Shear related envelopes** - with variable grades related to plunging mineralised shoots that dip steeply to the west.
- **Vein swarms** - that consist of east dipping extensional quartz veins with minimal to no associated west dipping shear fabric.
- **“Father’s Day Vein” style mineralisation** - where mineralised extensional veins host coarse gold in areas where structures transect favourable geology including intrusive intermediate porphyries and sulphidic meta-sediments.

Mineralised intervals selected for the purposes of modelling were validated against the logging and core photographs, with the hangingwall and footwall contacts generally defined by the presence / absence of biotite + pyrite alteration. These defined mineralised intervals were then solid modelled utilising Leapfrog Geo™ software.

Validations of the wireframes were carried out in section and plan view, and all wireframes were verified as coherent solids. Mineralised domains were subject to internal peer review.

The mineralisation wireframes were used to code the drill holes with a numeric domain value, and these were manually validated to ensure correct interval selection.

The drill hole database used in the compilation of the Mineral Resource Estimate for Fletcher was exported from the Westgold server on June 6, 2024. A total of 73 Fletcher diamond drill holes were available for use in the Mineral Resource Estimate, totalling approximately 46,000m.

Leapfrog Geo™ software was used to extract downhole gold intersections within the different resource domains. Drill hole assays were composited to 1m with a minimum of 0.5m using the best-fit methodology using Surpac™ software. The composites were checked for spatial correlation with the objects, the location of the rejected composites, and zero composite values. Individual composite files were created for each of the domains in the wireframe models. A statistical analysis was subsequently completed using Supervisor software.

Understanding the grade continuity and determining its extent and orientation is achieved through interpreting and modelling the experimental variogram. The experimental variogram requires sufficient sample data to provide a reliable measure of the grade continuity. Experimental variograms were modelled using Supervisor™ software using a normal score transformation. The normal score transformation reduces the effect of outliers and helps to identify the underlying structure of the variable. The variogram models were back transformed to real space for use in the estimation process. The nugget effect was defined using downhole variograms for the domain to be estimated.

Kriging neighbourhood analysis (**KNA**) was carried out to determine the optimal search parameters for ordinary kriging estimation of gold grade. A multiple blocks approach was used rather than a single block analysis.

A block model was created using Surpac™ software to cover the extent of the Fletcher deposit. The parent block size was selected based on the results of the KNA while the selected sub-block size was necessary to provide sufficient resolution to the block model.

Gold grades were estimated in Surpac™ software using ordinary kriging interpolation.

Bulk density values were assigned to each rock type based upon observed values in the existing Beta Hunt mine.

Model validation was completed to check that the grade estimates within the model were an appropriate reflection of the underlying composite sample data, and to confirm that the interpolation parameters were applied as intended. Checks of the estimated block grade with the corresponding composite dataset were completed using several approaches involving both numerical and spatial aspects.

Fletcher has been classified as an Indicated or Inferred Mineral Resource based upon a combination of quantitative and qualitative criteria which included geological continuity and confidence in volume models, data quality, sample spacing, lode continuity and estimation parameters. No Measured material has been assigned.

This approach is particularly suited to structurally controlled gold deposits such as Fletcher.

Next Steps

Westgold has commenced infill drilling Stage 1 of the Fletcher Zone, with the additional data targeted towards delivering a maiden Ore Reserve for Stage 1 during FY26. In parallel, drilling is planned to commence within the Fletcher Stage 2 target area, the northern kilometre of Fletcher, in the first half of FY26.

Additionally, Westgold has already commenced work aimed at defining the fault-offset extension of Fletcher to the south of the Alpha Island Fault, known as Mason². The Company has also been assaying historical nickel-focused drilling previously conducted by Western Mining Corporation, which intersected the Mason Zone but was not assayed for gold, in an effort to accelerate the understanding of this high-potential area.

Importantly, scoping-level work is now underway to determine how best to maximise value from the significant Mineral Resource now defined at Fletcher. This work will consider the substantial potential for increases in operational scale that Fletcher offers and will not be bound by the constraints of the current operating model at Beta Hunt.

This approach will allow Westgold to fully capitalise on the transformational opportunity that Fletcher offers.

This announcement is authorised for release to the ASX by the Board.



Figure 6 – Westgold truck exiting the Beta Hunt West Portal.

² Refer to ASX release titled “Beta Hunt Drilling Update” – 18 February 2025

Investor and media relations enquiries

Investor Relations
Kasun Liyanaarachchi
Group Manager Investor Relations & Communications
investor.relations@westgold.com.au
+61 458 564 483

Media
Annette Ellis
Manager Communications & Corporate Affairs
Media@westgold.com.au
+61 458 200 039

Competent Person Statements

Mineral Resource Estimates

The information in this report that relates to Mineral Resource Estimates is compiled by Westgold technical employees and contractors under the supervision of Mr Jake Russell B.Sc. (Hons), who is a member of the Australian Institute of Geoscientists. Mr Russell is a full-time employee of the company and has sufficient experience which is relevant to the styles of mineralisation and types of deposit under consideration and to the activities which he is undertaking to qualify as a Competent Person as defined in the 2012 Edition of the Australasian Code for Reporting of Exploration Results, Mineral Resources and Ore Reserves (the “JORC Code”) and as a Qualified Person as defined in the CIM Guidelines and National Instrument 43-101 – Standards of Disclosure for Mineral Projects (“NI 43-101”). Mr Russell consents to the inclusion in this report of the matters based on his information in the form and context in which it appears. Mr Russell is eligible to participate in short- and long-term incentive plans of the company.

Ore Reserves

The information in this report that relates to Ore Reserve is based on information compiled by Mr. Leigh Devlin B.Eng. FAusIMM. Mr. Devlin has sufficient experience which is relevant to the styles of mineralisation and types of deposit under consideration and to the activities which they are undertaking to qualify as a Competent Person as defined in the JORC Code and as a Qualified Person as defined in the CIM Guidelines and NI 43-101. Mr. Devlin consents to the inclusion in this report of the matters based on his information in the form and context in which it appears. Mr. Devlin is a full-time senior executive of the Company and is eligible to and may participate in short-term and long-term incentive plans of the Company as disclosed in its annual reports and disclosure documents.

Forward looking statements

These materials prepared by Westgold Resources Limited include forward looking statements. Often, but not always, forward looking statements can generally be identified by the use of forward looking words such as “may”, “will”, “expect”, “intend”, “believe”, “forecast”, “predict”, “plan”, “estimate”, “anticipate”, “continue”, and “guidance”, or other similar words and may include, without limitation, statements regarding plans, strategies and objectives of management, anticipated production or construction commencement dates and expected costs or production outputs.

Forward looking statements inherently involve known and unknown risks, uncertainties and other factors that may cause the Company’s actual results, performance and achievements to differ materially from any future results, performance or achievements. Relevant factors may include, but are not limited to, changes in commodity prices, foreign exchange fluctuations and general economic conditions, increased costs and demand for production inputs, the speculative nature of exploration and project development, including the risks of obtaining necessary licenses and permits and diminishing quantities or grades of

reserves, political and social risks, changes to the regulatory framework within which the Company operates or may in the future operate, environmental conditions including extreme weather conditions, recruitment and retention of personnel, industrial relations issues and litigation.

Forward looking statements are based on the Company and its management's good faith assumptions relating to the financial, market, regulatory and other relevant environments that will exist and affect the Company's business and operations in the future. The Company does not give any assurance that the assumptions on which forward looking statements are based will prove to be correct, or that the Company's business or operations will not be affected in any material manner by these or other factors not foreseen or foreseeable by the Company or management or beyond the Company's control.

Although the Company attempts and has attempted to identify factors that would cause actual actions, events or results to differ materially from those disclosed in forward looking statements, there may be other factors that could cause actual results, performance, achievements or events not to be as anticipated, estimated or intended, and many events are beyond the reasonable control of the Company. In addition, the Company's actual results could differ materially from those anticipated in these forward-looking statements as a result of the factors outlined in the "Risk Factors" section of the Company's continuous disclosure filings available on SEDAR+ or the ASX, including, in the Company's current annual report, half year report or most recent management discussion and analysis.

Accordingly, readers are cautioned not to place undue reliance on forward looking statements. Forward looking statements in these materials speak only at the date of issue. Subject to any continuing obligations under applicable law or any relevant stock exchange listing rules, in providing this information the Company does not undertake any obligation to publicly update or revise any of the forward-looking statements or to advise of any change in events, conditions or circumstances.

SECTION 1: SAMPLING TECHNIQUES AND DATA

Criteria	JORC Code Explanation	Commentary
Sampling techniques	<ul style="list-style-type: none"> Nature and quality of sampling (e.g. cut channels, random chips, or specific specialised industry standard measurement tools appropriate to the minerals under investigation, such as down hole gamma sondes, or handheld XRF instruments, etc.). These examples should not be taken as limiting the broad meaning of sampling. Include reference to measures taken to ensure sample representivity and the appropriate calibration of any measurement tools or systems used. Aspects of the determination of mineralisation that are Material to the Public Report. In cases where ‘industry standard’ work has been done this would be relatively simple (e.g. ‘reverse circulation drilling was used to obtain 1 m samples from which 3 kg was pulverised to produce a 30 g charge for fire assay’). In other cases, more explanation may be required, such as where there is coarse gold that has inherent sampling problems. Unusual commodities or mineralisation types (e.g. submarine nodules) may warrant disclosure of detailed information. 	<ul style="list-style-type: none"> Diamond Drilling <p>A significant portion of the data used in resource calculations has been gathered from diamond core. Multiple sizes have been used historically. This core is geologically logged and subsequently halved for sampling. Grade control holes may be whole-cored to streamline the core handling process if required.</p>
Drilling techniques	<ul style="list-style-type: none"> Drill type (e.g. core, reverse circulation, open-hole hammer, rotary air blast, auger, Bangka, sonic, etc.) and details (e.g. core diameter, triple or standard tube, depth of diamond tails, face-sampling bit or other type, whether core is oriented and if so, by what method, etc.). Method of recording and assessing core and chip sample recoveries and results assessed. 	<ul style="list-style-type: none"> Face Sampling <p>At each of the major past and current underground producers, each development face / round is horizontally chip sampled. The sampling intervals are dominated by geological constraints (e.g. rock type, veining and alteration / sulphidation etc.). The majority of exposures within the orebody are sampled.</p>
Drill sample recovery	<ul style="list-style-type: none"> Measures taken to maximise sample recovery and ensure representative nature of the samples. Whether a relationship exists between sample recovery and grade and whether sample bias may have occurred due to preferential loss/gain of fine/coarse material. 	<ul style="list-style-type: none"> Sludge Drilling <p>Sludge drilling is performed with an underground production drill rig. It is an open hole drilling method using water as the flushing medium, with a 64mm (nominal) hole diameter. Sample intervals are ostensibly the length of the drill steel. Holes are drilled at sufficient angles to allow flushing of the hole with water following each interval to prevent contamination. Sludge drilling is not used to inform resource models.</p> <ul style="list-style-type: none"> RC Drilling <p>Drill cuttings are extracted from the RC return via cyclone. The underflow from each interval is transferred via bucket to a four-tiered riffle splitter, delivering approximately three kilograms of the recovered material into calico bags for analysis. The residual material is retained on the ground near the hole. Composite samples are obtained from the residue material for initial analysis, with the split samples remaining with the individual residual piles until required for re-split analysis or eventual disposal.</p> <ul style="list-style-type: none"> RAB / Aircore Drilling <p>Combined scoops from bucket dumps from cyclone for composite. Split samples taken from individual bucket dumps via scoop. RAB holes are not included in the resource estimate.</p> <ul style="list-style-type: none"> Blast Hole Drilling <p>Cuttings sampled via splitter tray per individual drill rod. Blast holes not included in the resource estimate.</p> <p>All geology input is logged and validated by the relevant area geologists, incorporated into this is assessment of sample recovery. No defined relationship exists between sample recovery and</p>

Criteria	JORC Code Explanation	Commentary
		grade. Nor has sample bias due to preferential loss or gain of fine or coarse material been noted.
Logging	<ul style="list-style-type: none"> Whether core and chip samples have been geologically and geotechnically logged to a level of detail to support appropriate Mineral Resource estimation, mining studies and metallurgical studies. Whether logging is qualitative or quantitative in nature. Core (or costean, channel, etc.) photography. The total length and percentage of the relevant intersections logged 	<ul style="list-style-type: none"> Westgold surface drill-holes are all orientated and have been logged in detail for geology, veining, alteration, mineralisation and orientated structure. Westgold underground drill-holes are logged in detail for geology, veining, alteration, mineralisation and structure. Core has been logged in enough detail to allow for the relevant mineral resource estimation techniques to be employed. Surface core is photographed both wet and dry and underground core is photographed wet. All photos are stored on the Company's servers, with the photographs from each hole contained within separate folders. Development faces are mapped geologically. RC, RAB and Aircore chips are geologically logged. Sludge drilling is logged for lithology, mineralisation and vein percentage. Logging is both qualitative and quantitative in nature. All holes are logged completely, all faces are mapped completely.
Sub-sampling techniques and sample preparation	<ul style="list-style-type: none"> If core, whether cut or sawn and whether quarter, half or all core taken. If non-core, whether riffled, tube sampled, rotary split, etc. and whether sampled wet or dry. For all sample types, the nature, quality and appropriateness of the sample preparation technique. Quality control procedures adopted for all sub-sampling stages to maximise representivity of samples. Measures taken to ensure that the sampling is representative of the in-situ material collected, including for instance results for field duplicate/second-half sampling. Whether sample sizes are appropriate to the grain size of the material being sampled. 	<ul style="list-style-type: none"> Blast holes -Sampled via splitter tray per individual drill rods. RAB / AC chips - Combined scoops from bucket dumps from cyclone for composite. Split samples taken from individual bucket dumps via scoop. RC - Three tier riffle splitter (approximately 5kg sample). Samples generally dry. Face Chips - Nominally chipped horizontally across the face from left to right, sub-set via geological features as appropriate. Diamond Drilling - Half-core niche samples, sub-set via geological features as appropriate. Grade control holes may be whole-cored to streamline the core handling process if required. Chips / core chips undergo total preparation. Samples undergo fine pulverisation of the entire sample by an LM5 type mill to achieve a 75µ product prior to splitting. QA/QC is currently ensured during the sub-sampling stages process via the use of the systems of an independent NATA / ISO accredited laboratory contractor. A significant portion of the historical informing data has been processed by in-house laboratories. The sample size is considered appropriate for the grain size of the material being sampled. The un-sampled half of diamond core is retained for check sampling if required. For RC chips regular field duplicates are collected and analysed for significant variance to primary results.
Quality of assay data and laboratory tests	<ul style="list-style-type: none"> The nature, quality and appropriateness of the assaying and laboratory procedures used and whether the technique is considered partial or total. For geophysical tools, spectrometers, handheld XRF instruments, etc., the parameters used in determining the analysis including instrument make and model, reading times, calibrations factors applied and their derivation, etc. Nature of quality control procedures adopted (e.g. standards, blanks, duplicates, external laboratory checks) and whether acceptable levels of accuracy (i.e. lack of bias) and precision have been established. 	<ul style="list-style-type: none"> Recent sampling was analysed by fire assay as outlined below; <ul style="list-style-type: none"> A 40g – 50g sample undergoes fire assay lead collection followed by flame atomic adsorption spectrometry. The laboratory includes a minimum of one project standard with every 22 samples analysed. Quality control is ensured via the use of standards, blanks and duplicates. No significant QA/QC issues have arisen in recent drilling results. Photon Assay was introduced in 2023 for Beta Hunt grade control samples. PhotonAssay™ technology (Chrysos Corporation Limited) is a rapid, non-destructive analysis of gold and other elements in mineral samples. It is based on the principle of gamma activation, which uses high energy x-rays to excite changes to the nuclear structure of selected elements. The decay is then measured to give a gold analysis. Each sample is run through two cycles with a radiation time of 15s. This methodology is insensitive to material type and thus does not

Criteria	JORC Code Explanation	Commentary
		<p>require fluxing chemicals as in the fire assay methodology. Highlights of the PhotonAssay™ process are as follows:</p> <ul style="list-style-type: none"> ○ The process is non-destructive; the same sample accuracy can be determined by repeat measurements of the same sample. In addition, the instrument runs a precision analysis for each sample relating to the instrument precision. ○ The process allows for an increased sample size, about 500 g of crushed product. • The crushed material is not pulverised, as in the fire assay process; this ensures that gold is not smeared or lost during pulverisation (especially important if there is an expectation of visible gold that is being analysed) • Historical drilling has used a combination of Fire Assay, Aqua Regia and PAL analysis. • These assay methodologies are appropriate for the resources in question.
Verification of sampling and assaying	<ul style="list-style-type: none"> • The verification of significant intersections by either independent or alternative company personnel. • The use of twinned holes. • Documentation of primary data, data entry procedures, data verification, data storage (physical and electronic) protocols. • Discuss any adjustment to assay data. 	<ul style="list-style-type: none"> • No independent or alternative verifications are available. • Virtual twinned holes have been drilled in several instances across all sites with no significant issues highlighted. Drillhole data is also routinely confirmed by development assay data in the operating environment. • Primary data is collected utilising LogChief. The information is imported into a SQL database server and verified. • All data used in the calculation of resources and reserves are compiled in databases (underground and open pit) which are overseen and validated by senior geologists. • No adjustments have been made to any assay data.
Location of data points	<ul style="list-style-type: none"> • Accuracy and quality of surveys used to locate drill holes (collar and down-hole surveys), trenches, mine workings and other locations used in Mineral Resource estimation. • Specification of the grid system used. • Quality and adequacy of topographic control. 	<ul style="list-style-type: none"> • All data is spatially oriented by survey controls via direct pickups by the survey department. Drillholes are all surveyed downhole, deeper holes with a Gyro tool if required, the majority with single / multishot cameras. • All drilling and resource estimation is preferentially undertaken in local mine grid at the various sites. • Topographic control is generated from a combination of remote sensing methods and ground-based surveys. This methodology is adequate for the resources in question.
Data spacing and distribution	<ul style="list-style-type: none"> • Data spacing for reporting of Exploration Results. • Whether the data spacing and distribution is sufficient to establish the degree of geological and grade continuity appropriate for the Mineral Resource and Ore Reserve estimation procedure(s) and classifications applied. • Whether sample compositing has been applied. 	<ul style="list-style-type: none"> • Data spacing is variable dependent upon the individual orebody under consideration. A lengthy history of mining has shown that this approach is appropriate for the Mineral Resource Estimation process and to allow for classification of the resources as they stand. • Compositing is carried out based upon the modal sample length of each individual domain.
Orientation of data in relation to geological structure	<ul style="list-style-type: none"> • Whether the orientation of sampling achieves unbiased sampling of possible structures and the extent to which this is known, considering the deposit type. • If the relationship between the drilling orientation and the orientation of key mineralised structures is considered to have introduced a sampling bias, this should be assessed and reported if material. 	<ul style="list-style-type: none"> • Drilling intersections are nominally designed to be normal to the orebody as far as underground infrastructure constraints / topography allows. • Development sampling is nominally undertaken normal to the various orebodies. • Where drilling angles are sub optimal the number of samples per drill hole used in the estimation has been limited to reduce any potential bias. • It is not considered that drilling orientation has introduced an appreciable sampling bias.
Sample security	<ul style="list-style-type: none"> • The measures taken to ensure sample security. 	<ul style="list-style-type: none"> • For samples assayed at on-site laboratory facilities, samples are delivered to the facility by Company staff. Upon delivery the responsibility for sample security and storage falls to the independent third-party operators of these facilities. • For samples assayed off-site, samples are delivered to a third-party transport service, who in turn relay them to the independent laboratory contractor. Samples are stored securely until

Criteria	JORC Code Explanation	Commentary
		they leave site.
Audits or reviews	<ul style="list-style-type: none"> The results of any audits or reviews of sampling techniques and data 	<ul style="list-style-type: none"> Site generated resources and reserves and the parent geological data is routinely reviewed by the Westgold Corporate technical team.

SECTION 2: REPORTING OF EXPLORATION RESULTS

(Criteria listed in the preceding section also apply to this section.)

Criteria	JORC Code Explanation	Commentary
Mineral tenement and land tenure status	<ul style="list-style-type: none"> Type, reference name/number, location and ownership including agreements or material issues with third parties such as joint ventures, partnerships, overriding royalties, native title interests, historical sites, wilderness or national park and environmental settings. The security of the tenure held at the time of reporting along with any known impediments to obtaining a licence to operate in the area. 	<ul style="list-style-type: none"> Native title interests are recorded against several WGX tenements. The CMGP tenements are held by the Big Bell Gold Operations (BBGO) of which Westgold has 100% ownership. Several third-party royalties exist across various tenements at CMGP, over and above the state government royalty. The Fortnum Gold Project tenure is 100% owned by Westgold through subsidiary company Aragon Resources Pty. Ltd. Various Royalties apply to the package. The most pertinent being; <ul style="list-style-type: none"> State Government – 2.5% NSR Beta Hunt is owned by Westgold through a sub-lease agreement with St Ives Gold Mining Company Pty Ltd (SIGMC), which gives Westgold the right to explore and mine gold and nickel. Royalties on gold production from Beta Hunt are as follows: <ul style="list-style-type: none"> A royalty to the state government equal to 2.5% of the royalty value of gold metal produced; and Royalties to third parties equal to 4.75% of recovered gold less allowable deductions. The Higginsville-Lakewood Operations include the Higginsville and Lakewood Mills and associated infrastructure, mining operations and exploration prospects which are located on 242 tenements owned by Westgold and covers approximately 1,800km2 total area. Royalties on the HGO gold production are as follows: <ul style="list-style-type: none"> Production payments of up to 1% of gross gold revenue over various tenements to traditional land owners. Royalty equal to 2.5% of recovered gold to the Government of Western Australia; and Various third parties hold rights to receive royalties in respect of gold (and in some cases other minerals or metals) recovered from the tenements. The tenure is currently in good standing. There are no known issues regarding security of tenure. There are no known impediments to continued operation. WGX operates in accordance with all environmental conditions set down as conditions for grant of the leases.
Exploration done by other parties	<ul style="list-style-type: none"> Acknowledgment and appraisal of exploration by other parties 	<ul style="list-style-type: none"> The CMGP tenements have an exploration and production history in excess of 100 years. The FGO tenements have an exploration and production history in excess of 30 years. BHO tenements have an exploration and production history in excess of 60 years. HGO tenements have an exploration and production history in excess of 40 years. Westgold work has generally confirmed the veracity of historic exploration data.

Criteria	JORC Code Explanation	Commentary
Geology	<ul style="list-style-type: none"> Deposit type, geological setting and style of mineralisation. 	<p>BHO</p> <ul style="list-style-type: none"> Beta Hunt is situated within the central portion of the Norseman-Wiluna greenstone belt in a sequence of mafic/ultramafic and felsic rocks on the southwest flank of the Kambalda Dome. Gold mineralisation occurs mainly in subvertical shear zones in the Lunnon Basalt and is characterised by shear and extensional quartz veining within a halo of biotite/pyrite alteration. Within these shear zones, coarse gold sometimes occurs where the shear zones intersect iron-rich sulphidic metasediments in the Lunnon Basalt or nickel sulphides at the base of the Kambalda Komatiite (ultramafics). The mineralised shears are represented by A-Zone, Western Flanks, Larkin and Mason zones. <p>CGO</p> <ul style="list-style-type: none"> CGO is located in the Achaean Murchison Province, a granite-greenstone terrane in the northwest of the Yilgarn Craton. Greenstone belts trending north-northeast are separated by granite-gneiss domes, with smaller granite plutons also present within or on the margins of the belts. Mineralisation at Big Bell is hosted in the shear zone (Mine Sequence) and is associated with the post-peak metamorphic retrograde assemblages. Stibnite, native antimony and trace arsenopyrite are disseminated through the K-feldspar-rich lode schist. These are intergrown with pyrite and pyrrhotite and chalcopyrite. Mineralisation outside the typical Big Bell host rocks (KPSH), for example 1,600N and Shocker, also display a very strong W-As-Sb geochemical halo. Numerous gold deposits occur within the Cuddingwarra Project area, the majority of which are hosted within the central mafic-ultramafic ± felsic porphyry sequence. Within this broad framework, mineralisation is shown to be spatially controlled by competency contrasts across, and flexures along, layer-parallel D2 shear zones, and is maximised when transected by corridors of northeast striking D3 faults and fractures. The Great Fingall Dolerite hosts the majority gold mineralisation within the portion of the greenstone belt proximal to Cue (The Day Dawn Project Area). Unit AGF3 is the most brittle of all the five units and this characteristic is responsible for its role as the most favourable lithological host to gold mineralisation in the Greenstone Belt. <p>FGO</p> <ul style="list-style-type: none"> The Fortnum deposits are Paleoproterozoic shear-hosted gold deposits within the Fortnum Wedge, a localised thrust duplex of Narracoota Formation within the overlying Ravelstone Formation. Both stratigraphic formations comprise part of the Bryah Basin in the Capricorn Orogen, Western Australia. The Horseshoe Cassidy deposits are hosted within the Ravelstone Formation (siltstone and argillite) and Narracoota Formation (highly altered, moderate to strongly deformed mafic to ultramafic rocks). The main zone of mineralisation is developed within a horizon of highly altered magnesian basalt. Gold mineralisation is associated with strong vein stock works that are confined to the altered mafic. Alteration consists of two types: stockwork proximal silica-carbonate-fuchsite-haematite-pyrite and distal silica-haematite-carbonate+/-chlorite. The Peak Hill district represents remnants of a Proterozoic fold belt comprising highly deformed trough and shelf sediments and mafic / ultramafic volcanics, which are generally

Criteria	JORC Code Explanation	Commentary
		moderately metamorphosed (except for the Peak Hill Metamorphic Suite).
		<p>HGO</p> <ul style="list-style-type: none"> The Higginsville Gold Operation is located in the Eastern Goldfields Superterrane of the Archean Yilgarn Craton. The bulk of the Higginsville tenement package is located almost entirely within the well-mineralised Kalgoorlie Terrane, between the gold mining centres of Norseman and St Ives. HGO can be sub-divided into seven major geological domains: Trident Line of Lode, Chalice, Lake Cowan, Southern Paleo-channels, Mt Henry, Polar Bear Group and Spargos Project area. Majority of mineralisation along the Trident Line of Lode are hosted within the Poseidon gabbro and high-MgO dyke complexes in the south. The Poseidon Gabbro is a thick, weakly-differentiated gabbroic sill, which strikes north-south and dips 60° to the east, is over 500 m thick and 2.5 km long. The mineralisation is hosted within or marginal to quartz veining and is structurally and lithologically controlled. The Chalice Deposit is located within a north-south trending, 2 km to 3 km wide greenstone terrane, flanked on the west calc-alkaline granitic rocks of the Boorabin Batholith and to the east by the Pioneer Dome Batholith. The dominant unit that hosts gold mineralisation is a fine grained, weak to strongly foliated amphibole-plagioclase amphibolite, with a typically lepidoblastic (mineralogically aligned and banded) texture. It is west-dipping and generally steep, approximately 60° to 75°. The Lake Cowan project area is situated near the centre of a regional anticline between the Zuleika and Lefroy faults, with the local geology of the area made more complex by the intrusion of the massive Proterozoic Binneringie dyke. The majority of mineralisation at the Lake Cowan Mining Centre is hosted within an enclave of Archaean material surrounded by the Binneringie dyke. Mineralised zones within the Southern Paleo Channels network comprise both placer gold, normally near the base of the channel-fill sequences, and chemically-precipitated secondary gold within the channel-fill materials and underlying saprolite. These gold concentrations commonly overlie, or are adjacent to, primary mineralised zones within Archaean bedrock. The Mount Henry Project covers 347km² of the prolific South Norseman-Wiluna Greenstone belt of the Eastern Goldfields in Western Australia. Although the greenstone rocks from the Norseman area can be broadly correlated with those of the Kalgoorlie – Kambalda region they form a distinct terrain which is bounded on all sides by major regional shears. The Norseman Terrane has prominent banded iron formations which distinguish it from the Kalgoorlie–Kambalda Terrane. The Mount Henry gold deposit is hosted by a silicate facies BIF unit within the Noganyer Formation. Gold mineralisation is predominantly hosted by the silicate facies BIF unit but is also associated with minor meta-basalt and dolerite units that were mostly emplaced in the BIF prior to mineralisation. The footwall to the BIF is characterised by a sedimentary schistose unit and the hanging wall by the overlying dolerites of the Woolyeener Formation. The Mount Henry gold deposit is classified as an Archean, orogenic shear hosted deposit. The main lode is an elongated, shear-hosted body, 1.9km long by 6 – 10 metres wide and dips 65-75 degrees towards the west. The Polar Bear project is situated within the Archaean Norseman-Wiluna Belt which locally includes basalts, komatiites, metasediments, and felsic volcanics. The primary gold

Criteria	JORC Code Explanation	Commentary
		<p>mineralisation is related to hydrothermal activity during multiple deformation events. Indications are that gold mineralisation is focused on or near to the stratigraphic boundary between the Killaloe and Buldania Formation.</p> <ul style="list-style-type: none"> The Spargos Project occurs within Coolgardie Domain of the Kalgoorlie Terrane. The area is bounded by the Zuleika Shear to the east and the Kunanalling Shear to the west. The geological setting comprises tightly-folded north-south striking ultramafic and mafic volcanic rocks at the northern closure Widgiemooltha Dome. The project lies on the general trend of the Kunanalling / Karamindie Shear corridor, a regional shear zone that hosts significant mineralisation to the north at Ghost Crab (Mount Marion), Wattle Dam to the south, the Penfolds group and Kunanalling. The regional prospective Zuleika Shear lies to the east of the project. The tenements are prospective for vein and shear hosted gold deposits as demonstrated by Spargos Reward and numerous other gold workings and occurrences. Gold mineralisation at Spargos Reward is hosted by a coarse-grained pyrite-arsenopyrite lode in quartz-sericite schists, between strongly biotitic altered greywacke to the east and quartz-sericite-fuchsite-pyrite altered felsic tuff to the west. Gold mineralisation is associated with very little quartz veining which is atypical for many deposits in region. The Spargos Reward setting has been described variously as a low-quartz sulphidic mesothermal gold system or as a Hemlo style syn-sedimentary occurrence. <p>MGO</p> <ul style="list-style-type: none"> MGO is located in the Achaean Murchison Province, a granite-greenstone terrane in the northwest of the Yilgarn Craton. Greenstone belts trending north-northeast are separated by granite-gneiss domes, with smaller granite plutons also present within or on the margins of the belts. The Paddy's Flat area is located on the western limb of a regional fold, the Polelle Syn- cline, within a sequence of mafic to ultramafic volcanics with minor interflow sediments and banded iron-formation. The sequence has also been intruded by felsic porphyry dykes prior to mineralisation. Mineralisation is located along four sub-parallel trends at Paddy's Flat which can be summarized as containing three dominant mineralisation styles: <ul style="list-style-type: none"> Sulphide replacement BIF hosted gold. Quartz vein hosted shear-related gold. Quartz-carbonate-sulphide stockwork vein and alteration related gold. The Yaloginda area which host Bluebird – South Junction, is a gold-bearing Archaean greenstone belt situated ~15km south of Meekatharra. The deposits in the area are hosted in a strained and metamorphosed volcanic sequence that consists primarily of ultramafic and high-magnesium basalt with minor komatiite, peridotite, gabbro, tholeiitic basalt and interflow sediments. The sequence was intruded by a variety of felsic porphyry and intermediate sills and dykes. The Reedy's mining district is located approximately 15 km to the south-east to Meekatharra and to the south of Lake Annean. The Reedy gold deposits occur with- in a north-south trending greenstone belt, two to five kilometres wide, composed of volcano-sedimentary sequences and separated multiphase syn- and post-tectonic granitoid complexes. Structurally controlled the gold occur.
Drill hole Information	<ul style="list-style-type: none"> A summary of all information material to the understanding of the exploration results including a tabulation of the following 	<ul style="list-style-type: none"> Tables containing drillhole collar, downhole survey and intersection data are included in the body of the announcement. No explorations results are being reported for Beta Hunt and Higginsville Operations.

Criteria	JORC Code Explanation	Commentary
	<p>information for all Material drill holes:</p> <ul style="list-style-type: none"> ○ easting and northing of the drill hole collar ○ elevation or RL (Reduced Level – elevation above sea level in metres) of the drill hole collar ○ dip and azimuth of the hole ○ down hole length and interception depth ○ hole length. <ul style="list-style-type: none"> • If the exclusion of this information is justified on the basis that the information is not Material and this exclusion does not detract from the understanding of the report, the Competent Person should clearly explain why this is the case. 	
Data aggregation methods	<ul style="list-style-type: none"> • In reporting Exploration Results, weighting averaging techniques, maximum and/or minimum grade truncations (e.g., cutting of high grades) and cut-off grades are usually Material and should be stated. • Where aggregate intercepts incorporate short lengths of high-grade results and longer lengths of low-grade results, the procedure used for such aggregation should be stated and some typical examples of such aggregations should be shown in detail. • The assumptions used for any reporting of metal equivalent values should be clearly stated. 	<ul style="list-style-type: none"> • No exploration results being presented.
Relationship between mineralisation widths and intercept lengths	<ul style="list-style-type: none"> • These relationships are particularly important in the reporting of Exploration Results. • If the geometry of the mineralisation with respect to the drill hole angle is known, its nature should be reported. • If it is not known and only the down hole lengths are reported, there should be a clear statement to this effect (e.g., ‘down hole length, true width not known’). 	<ul style="list-style-type: none"> • No exploration results being presented.
Diagrams	<ul style="list-style-type: none"> • Appropriate maps and sections (with scales) and tabulations of intercepts should be included for any significant discovery being reported. These should include but not be limited to a plan view of drill hole collar locations and appropriate sectional views. 	<ul style="list-style-type: none"> • No exploration results being presented.
Balanced reporting	<ul style="list-style-type: none"> • Where comprehensive reporting of all Exploration Results is not practicable, representative reporting of both low and high grades and/or widths should be practiced to avoid misleading reporting of Exploration Results. 	<ul style="list-style-type: none"> • No exploration results being presented
Other substantive exploration data	<ul style="list-style-type: none"> • Other exploration data, if meaningful and material, should be reported including (but not limited to): geological observations; geophysical survey results; geochemical survey results; bulk samples – size and method of treatment; metallurgical test results; bulk density, groundwater, geotechnical and rock characteristics; potential deleterious or contaminating substances. 	<ul style="list-style-type: none"> • No exploration results being presented.

Criteria	JORC Code Explanation	Commentary
Further work	<ul style="list-style-type: none"> The nature and scale of planned further work (e.g. tests for lateral extensions or depth extensions or large-scale step-out drilling). Diagrams clearly highlighting the areas of possible extensions, including the main geological interpretations and future drilling areas, provided this information is not commercially sensitive. 	<ul style="list-style-type: none"> Ongoing surface and underground exploration activities will be undertaken to support continuing mining activities at Westgold Gold Operations.

SECTION 3: ESTIMATION AND REPORTING OF MINERAL RESOURCES

(Criteria listed in section 1, and where relevant in section 2, also apply to this section.)

Criteria	JORC Code Explanation	Commentary
Database integrity	<ul style="list-style-type: none"> Measures taken to ensure that data has not been corrupted by, for example, transcription or keying errors, between its initial collection and its use for Mineral Resource estimation purposes. Data validation procedures used. 	<ul style="list-style-type: none"> The database used for the estimation was extracted from the Westgold DataShed database management system stored on a secure SQL server. As new data is acquired it passes through a validation approval system designed to pick up any significant errors before the information is loaded into the master database.
Site visits	<ul style="list-style-type: none"> Comment on any site visits undertaken by the Competent Person and the outcome of those visits. If no site visits have been undertaken indicate why this is the case. 	<ul style="list-style-type: none"> Mr. Russell visits Westgold Gold Operations regularly.
Geological interpretation	<ul style="list-style-type: none"> Confidence in (or conversely, the uncertainty of) the geological interpretation of the mineral deposit. Nature of the data used and of any assumptions made. The effect, if any, of alternative interpretations on Mineral Resource estimation. The use of geology in guiding and controlling Mineral Resource estimation. The factors affecting continuity both of grade and geology. 	<ul style="list-style-type: none"> Mining in the Murchison and Goldfields districts has occurred since 1800's providing significant confidence in the currently geological interpretation across all projects. Confidence in the geological interpretation at BHO is high. The current geological interpretation has been a precursor to successful mining over the years and forms the basis for the long-term life of mine plan (LOM). The data and assumptions used do suggest that any significant alternative geological interpretation is unlikely. Geology (lithological units, alterations, structure, veining) have been used to guide and control Mineral Resource estimation for Beta Hunt and HGO No alternative interpretations are currently considered viable. Geological interpretation of the deposit was carried out using a systematic approach to ensure that the resultant estimated Mineral Resource figure was both sufficiently constrained, and representative of the expected sub-surface conditions. In all aspects of resource estimation the factual and interpreted geology was used to guide the development of the interpretation. Geological matrixes were established to assist with interpretation and construction of the estimation domains. The structural regime is the dominant control on geological and grade continuity in the Murchison and Goldfields. Lithological factors such as rheology contrast are secondary controls on grade distribution. Low-grade stockpiles are derived from previous mining of the mineralisation styles outlined above.
Dimensions	<ul style="list-style-type: none"> The extent and variability of the Mineral Resource expressed as length (along strike or otherwise), plan width, and depth below surface to the upper and lower limits of the Mineral Resource. 	<p>BHO</p> <ul style="list-style-type: none"> A-Zone extends over 2.2km strike length and is modelled to a vertical depth of 960m. It has variable thickness from 2m to 20m thick. Western Flanks has a strike extent of 1.8km and is modelled to a vertical extent of 450m, with average thickness of the shear around 10m. Larkin extends over 1.1km in strike length and is modelled to 400m vertical extent, with variable thickness ranging from 2m to 15m thick. Mason has a strike extent of 1.1km and is modelled to 455m vertical extent with variable

Criteria	JORC Code Explanation	Commentary
		<p>thickness between 7 to 15m.</p> <ul style="list-style-type: none"> Fletcher has a strike extent of 2 km and is modelled over a 800m vertical extent with variable thickness of individual lodes over a 500m lateral extent. <p>CGO</p> <ul style="list-style-type: none"> The Big Bell Trend is mineralised a strike length of >3,900m, a lateral extent of up +50m and a depth of over 1,500m. Great Fingall is mineralised a strike length of >500m, a lateral extent of >600m and a depth of over 800m. Black Swan South is mineralised a strike length of >1,700m, a lateral extent of up +75m and a depth of over 300m. <p>FGO</p> <ul style="list-style-type: none"> The Yarlalweelor mineral resource extends over 1,400m in strike length, 570m in lateral extent and 190m in depth. The Tom's and Sam's mineral resource extends over 650m in strike length, 400m in lateral extent and 130m in depth. The Eldorado mineral resource extends over 240m in strike length, 100m in lateral extent and 100m in depth. <p>HGO</p> <ul style="list-style-type: none"> Trident, Fairplay, Vine and Two Boy's deposits form the Line of Lode system and extends over 5km of strike. Chalice mineralisation has been defined over a strike length of 700m, a lateral extent of 200m and a depth of 650m. The Pioneer resource area extends over a strike length of 860m from 6,474,900mN to 6,475,760mN. The multiple NS striking parallel lodes occur within a narrow EW extent of 190m from 374,970mE to 375,160mE. Mineralisation has been modelled from surface at 291mRL to a vertical depth 208m to the 83mRL. <ul style="list-style-type: none"> Southern paleochannels gold mineralisation is interpreted to have a strike length around 4km and is predominantly flat lying. The Wills deposit extends over 900m in a ENE-WSW direction and is up to 200m wide. Pluto is confirmed between sections 6,480,100mN and 6,481,800mN. Nanook is confirmed between sections 6,469,300mN and 6,472,500mN. Lake Cowan: Atreides mineralisation is contained within flat lying lodes located within the weathered zone. The mineralizing strike extents vary between 100m to 300m long, with an average thickness of 2 to 3 m thick. Josephine has a strike length greater than 450m and >10m across strike and modelled to >90m at depth. Louis has a strike extent of 310m long and is interpreted to a depth of 170m below surface. Napoleon: ~220m strike and up to ~90m (individual mineralised lodes maximum of 12m) across strike to an interpreted depth of ~80m m below surface. Rose's dimension is 150m x 120m (X, Y), to an interpreted depth of +20-25m below surface. The Spargos resource area extends over a strike length of 330m from 6,542,980mN to 6,543,310mN. The parallel lodes occur within a narrow EW extent of 95m from 354,120mE

Criteria	JORC Code Explanation	Commentary
		<p>to 354,215mE. Mineralisation has been modelled from surface at 425mRL to a vertical depth 525m to -100mRL.</p> <p>MGO</p> <ul style="list-style-type: none"> The Paddy's Flat Trend is mineralised a strike length of >3,900m, a lateral extent of up +230m and a depth of over 500m. Bluebird – South Junction is mineralised a strike length of >1,800m, a lateral extent of up +50m and a depth of over 500m. Triton – South Emu is mineralised a strike length of >1,100m, a lateral extent of several metres and a depth of over 500m. <p>STOCKPILES</p> <ul style="list-style-type: none"> Low-grade stockpiles are of various dimensions. All modelling and estimation work undertaken by Westgold is carried out in three dimensions via Surpac Vision.
Estimation and modelling techniques.	<ul style="list-style-type: none"> The nature and appropriateness of the estimation technique(s) applied and key assumptions, including treatment of extreme grade values, domaining, interpolation parameters, maximum distance of extrapolation from data points. The availability of check estimates, previous estimates and/or mine production records and whether the Mineral Resource estimate takes appropriate account of such data. The assumptions made regarding recovery of by-products. Estimation of deleterious elements or other non-grade variables of economic significance (e.g. sulphur for acid mine drainage characterisation). In the case of block model interpolation, the block size in relation to the average sample spacing and the search employed. Any assumptions behind modelling of selective mining units. <i>Any assumptions about correlation between variables.</i> The process of validation, the checking process used, the comparison of model data to drillhole data, and use of reconciliation data if available. 	<ul style="list-style-type: none"> After validating the drillhole data to be used in the estimation, interpretation of the orebody is undertaken in sectional and / or plan view to create the outline strings which form the basis of the three-dimensional orebody wireframe. Wireframing is then carried out using a combination of automated stitching algorithms and manual triangulation to create an accurate three-dimensional representation of the sub-surface mineralised body. Drillhole intersections within the mineralised body are defined, these intersections are then used to flag the appropriate sections of the drillhole database tables for compositing purposes. Drillholes are subsequently composited to allow for grade estimation. In all aspects of resource estimation, the factual and interpreted geology was used to guide the development of the interpretation. Once the sample data has been composited, a statistical analysis is undertaken to assist with determining estimation search parameters, top-cuts etc. Variographic analysis of individual domains is undertaken to assist with determining appropriate search parameters. Which are then incorporated with observed geological and geometrical features to determine the most appropriate search parameters. An empty block model is then created for the area of interest. This model contains attributes set at background values for the various elements of interest as well as density, and various estimation parameters that are subsequently used to assist in resource categorisation. The block sizes used in the model will vary depending on orebody geometry, minimum mining units, estimation parameters and levels of informing data available. Grade estimation is then undertaken, with ordinary kriging estimation method is considered as standard, although in some circumstances where sample populations are small, or domains are unable to be accurately defined, inverse distance weighting estimation techniques will be used. For very minor lodes, the respective median or average grade is assigned. Both by-product and deleterious elements are estimated at the time of primary grade estimation if required. It is assumed that by-products correlate well with gold. There are no assumptions made about the recovery of by-products. At Starlight the distribution of gold grades within the mineralised lodes is highly variable and is characterised by cohesive regions of higher tenor gold grades, with clusters of individual values often reaching over eighty grams per tonne. Whilst these higher-grade zones appear reasonably cohesive, they

Criteria	JORC Code Explanation	Commentary
		<p>are manifested by a high-degree of short-scale variability, making difficult to manually interpret constraining domains. These internal; high-grade regions are often surrounded by peripheral regions of lower grade mineralisation that is also highly variable. The moderate to high grade variability and complex spatial continuity supports the use of Categorical Indicator Kriging (CIK) to define internal estimation sub-domains domains, together with applying distance limiting at chosen grade thresholds to restrict the influence of the high grade and extreme grade values during grade interpolation.</p> <ul style="list-style-type: none"> The resource is then depleted for mining voids and subsequently classified in line with JORC guidelines utilising a combination of various estimation derived parameters and geological / mining knowledge. This approach has proven to be applicable to Westgold's gold assets. Estimation results are routinely validated against primary input data, previous estimates and mining output. Good reconciliation between mine claimed figures and milled figures are routinely achieved during production.
Moisture	<ul style="list-style-type: none"> Whether the tonnages are estimated on a dry basis or with natural moisture, and the method of determination of the moisture content. 	<ul style="list-style-type: none"> Tonnage estimates are dry tonnes.
Cut-off parameters	<ul style="list-style-type: none"> The basis of the adopted cut-off grade(s) or quality parameters applied. 	<ul style="list-style-type: none"> The cut off grades used for the reporting of the Mineral Resources have been selected based on the style of mineralisation, depth from surface of the mineralisation and the most probable extraction technique and associated costs.
Mining factors or assumptions	<ul style="list-style-type: none"> Assumptions made regarding possible mining methods, minimum mining dimensions and internal (or, if applicable, external) mining dilution. It is always necessary as part of the process of determining reasonable prospects for eventual economic extraction to consider potential mining methods, but the assumptions made regarding mining methods and parameters when estimating Mineral Resources may not always be rigorous. Where this is the case, this should be reported with an explanation of the basis of the mining assumptions made. 	<ul style="list-style-type: none"> Variable by deposit. No mining dilution or ore loss has been modelled in the resource model or applied to the reported Mineral Resource.
Metallurgical factors or assumptions	<ul style="list-style-type: none"> The basis for assumptions or predictions regarding metallurgical amenability. It is always necessary as part of the process of determining reasonable prospects for eventual economic extraction to consider potential metallurgical methods, but the assumptions regarding metallurgical treatment processes and parameters made when reporting Mineral Resources may not always be rigorous. Where this is the case, this should be reported with an explanation of the basis of the metallurgical assumptions made. 	<ul style="list-style-type: none"> Not considered for Mineral Resource. Applied during the Reserve generation process.
Environmental factors or assumptions	<ul style="list-style-type: none"> Assumptions made regarding possible waste and process residue disposal options. It is always necessary as part of the process of determining reasonable prospects for eventual economic extraction to consider the potential environmental impacts of the mining and processing operation. While at this stage the determination of potential environmental impacts, particularly for a greenfields project, may not 	<ul style="list-style-type: none"> Westgold operates in accordance with all environmental conditions set down as conditions for grant of the respective leases.

Criteria	JORC Code Explanation	Commentary
	always be well advanced, the status of early consideration of these potential environmental impacts should be reported. Where these aspects have not been considered this should be reported with an explanation of the environmental assumptions made.	
Bulk density	<ul style="list-style-type: none"> Whether assumed or determined. If assumed, the basis for the assumptions. If determined, the method used, whether wet or dry, the frequency of the measurements, the nature, size and representativeness of the samples. The bulk density for bulk material must have been measured by methods that adequately account for void spaces (vugs, porosity, etc.), moisture and differences between rock and alteration zones within the deposit. Discuss assumptions for bulk density estimates used in the evaluation process of the different materials. 	<ul style="list-style-type: none"> Bulk density of the mineralisation is variable and is for the most part lithology and oxidation rather than mineralisation dependent. A large suite of bulk density determinations has been carried out across the project areas. The bulk densities were separated into different weathering domains and lithological domains. A significant past mining history has validated the assumptions made surrounding bulk density.
Classification	<ul style="list-style-type: none"> The basis for the classification of the Mineral Resources into varying confidence categories. Whether appropriate account has been taken of all relevant factors (i.e. relative confidence in tonnage/grade estimations, reliability of input data, confidence in continuity of geology and metal values, quality, quantity and distribution of the data). Whether the result appropriately reflects the Competent Person's view of the deposit. 	<ul style="list-style-type: none"> Resources are classified in line with JORC guidelines utilising a combination of various estimation derived parameters, input data and geological / mining knowledge. Drillhole spacing to support classification varies based upon lode characteristics. Measured ranges from 15-35m, Indicated from 10-180m and Inferred from 10-200m. This approach considers all relevant factors and reflects the Competent Person's view of the deposit.
Audits or reviews	<ul style="list-style-type: none"> The results of any audits or reviews of Mineral Resource estimates. 	<ul style="list-style-type: none"> Resource estimates are peer reviewed by the Corporate technical team. No external reviews have been undertaken.
Discussion of relative accuracy/ confidence	<ul style="list-style-type: none"> Where appropriate a statement of the relative accuracy and confidence level in the Mineral Resource estimate using an approach or procedure deemed appropriate by the Competent Person. For example, the application of statistical or geostatistical procedures to quantify the relative accuracy of the resource within stated confidence limits, or, if such an approach is not deemed appropriate, a qualitative discussion of the factors that could affect the relative accuracy and confidence of the estimate. The statement should specify whether it relates to global or local estimates, and, if local, state the relevant tonnages, which should be relevant to technical and economic evaluation. Documentation should include assumptions made and the procedures used. These statements of relative accuracy and confidence of the estimate should be compared with production data, where available. 	<ul style="list-style-type: none"> All currently reported resource estimates are considered robust, and representative on both a global and local scale. A continuing history of mining with good reconciliation of mine claimed to mill recovered provides confidence in the accuracy of the estimates.

SECTION 4: ESTIMATION AND REPORTING OF ORE RESERVES

(Criteria listed in section 1, and where relevant in sections 2 and 3, also apply to this section.)

Criteria	JORC Code Explanation	Commentary
Mineral Resource estimate for conversion to Ore Reserves	<ul style="list-style-type: none"> Description of the Mineral Resource estimate used as a basis for the conversion to an Ore Reserve. Clear statement as to whether the Mineral Resources are reported additional to, or inclusive of, the Ore Reserves. 	<ul style="list-style-type: none"> At all Operations the Ore Reserve is based on the corresponding reported Mineral Resource Estimate. Mineral Resource Estimates reported are inclusive of those Mineral Resources Estimates modified to produce the Ore Reserve. At all projects, all Mineral Resources Estimates that have been converted to Ore Reserve are classified as either an Indicated or Measured.
Site visits	<ul style="list-style-type: none"> Comment on any site visits undertaken by the Competent Person and the outcome of those visits. If no site visits have been undertaken indicate why this is the case. 	<ul style="list-style-type: none"> Mr. Leigh Devlin has over 10 years' experience in the mining industry. Mr. Devlin visits the mine sites on a regular basis and is one of the primary engineers involved in mine planning, site infrastructure and project management.
Study status	<ul style="list-style-type: none"> The type and level of study undertaken to enable Mineral Resources to be converted to Ore Reserves. The Code requires that a study to at least Pre-Feasibility Study level has been undertaken to convert Mineral Resources to Ore Reserves. Such studies will have been carried out and will have determined a mine plan that is technically achievable and economically viable, and that material Modifying Factors have been considered 	<ul style="list-style-type: none"> Processing at the Murchison operations has occurred continuously since 2015, with previous production occurring throughout 1800's, 1900's and 2000's. Processing at the Goldfields operations has occurred intermittently since the 1980's and continuously since 2008 at Higginsville. Various mineralisation styles and host domains have been mined since discovery. Mining during this time has ranged from open pit cutbacks, insitu surface excavations to extensional underground developments. Budget level, 24 month projected, forecasts are completed on a biannual basis, validating cost and physical inventory assumptions and modelling. These updated parameters are subsequently used for the basis of the Ore Reserve modification and financial factors. Following exploration and infill drilling activity, resource models are updated on both the estimation of grade and classification. These updated Mineral Resources Estimates then form the foundation for the Ore Reserve.
Cut-off parameters	<ul style="list-style-type: none"> The basis of the cut-off grade(s) or quality parameters applied. 	<ul style="list-style-type: none"> Underground Mines - Cut off grades are used to determine the economic viability of the convertible Mineral Resources Estimates. COG for underground mines incorporate OPEX development and production costs, grade control, haulage, milling, administration, along with state and private royalty conditions. Where an individual mine has different mining methods and or various orebody style, COG calculations are determined for each division. These cuts are applied to production shapes (stopes) as well as high grade development. Additionally, an incremental COG is applied to low grade development, whereby access to a high grade area is required. On the basis of above process, the COG is split into Mine Operating COG (incremental grade) 2.1gt and Fully Costed COG (inclusive of capital) 2.3gt. Open Pit Mines - The pit rim cut-off grade (COG) was determined as part of the Ore Reserve. The pit rim COG accounts for grade control, haulage, milling, administration, along with state and private royalty conditions. This cost profile is equated against the value of the mining block in terms of recovered metal and the expected selling price. The COG is then used to determine whether or not a mining block should be delivered to the treatment plant for processing, stockpiled as low- grade or taken to the waste dump. On the basis of above process, COGs for the open pit mines range from 0.8g/t (whereby the Mill is local to mine and Mill recoveries are greater than 90%) to 1.4g/t (regional pits with low Mill

Criteria	JORC Code Explanation	Commentary
		<p>recoveries).</p> <ul style="list-style-type: none"> Stockpile COG – A marginal grade was determined for each stockpile inventory to ensure it was economically viable. The COG accounts for haulage, milling, administration, along with state and private royalty conditions. Each pile honoured its Mill recovery percentage.
Mining factors or assumptions	<ul style="list-style-type: none"> The method and assumptions used as reported in the Pre-Feasibility or Feasibility Study to convert the Mineral Resource to an Ore Reserve (i.e. either by application of appropriate factors by optimisation or by preliminary or detailed design). The choice, nature and appropriateness of the selected mining method(s) and other mining parameters including associated design issues such as pre-strip, access, etc. The assumptions made regarding geotechnical parameters (e.g. pit slopes, stope sizes, etc.), grade control and pre-production drilling. The major assumptions made and Mineral Resource model used for pit and stope optimisation (if appropriate). The mining dilution factors used. The mining recovery factors used. Any minimum mining widths used. The manner in which Inferred Mineral Resources are utilised in mining studies and the sensitivity of the outcome to their inclusion. The infrastructure requirements of the selected mining methods. 	<ul style="list-style-type: none"> All Ore Reserve inventories are based upon detailed 3-dimensional designs to ensure practical mining conditions are met. Additionally, all Ore Reserve inventories are above the mine specific COG(s) as well as containing only Measured and Indicated material. Depending upon the mining method – modifying factors are used to address hydrological, geotechnical, minimum width and blasting conditions. <p>Open Pit Methodology</p> <ul style="list-style-type: none"> The mining shape in the Ore Reserve estimation is generated by a wireframe (geology interpretation of the mineralisation) which overlays the block model. Where the wire frame cuts the primary block, sub blocks fill out the remaining space to the wire frame boundary (effectively the mining shape). It is reasonable to assume that the mining method can selectively mine to the wire frame boundary with the additional dilution provision stated below. Ore Reserves are based on pit designs – with appropriate modifications to the original Whittle Shell outlines to ensure compliance with practical mining parameters. Geotechnical parameters aligned to the open pit Ore Reserves are either based on observed existing pit shape specifics or domain specific expectations / assumptions. Various geotechnical reports and retrospective reconciliations were considered in the design parameters. A majority of the open pits have a final design wall angle of 39-46 degrees, which is seen as conservative. Dilution of the ore through the mining process has been accounted for within the Ore Reserve quoted inventory. Various dilution ratios are used to represent the style of mineralisation. Where continuous, consistent mineralisation boundaries and grade represent the mineralised system the following factors are applied: oxide 15%, transitional 17% and fresh 19%. In circumstances where the orebody is less homogenous above the COG then the following dilution factors are applied in order to model correctly the inherent variability of extracting discrete sections of the pit floor: oxide 17%, transitional 19% and fresh 21%. To ensure clarity, the following percentages are additional ore mined in relation to excavating the wire frame boundary as identified in point 1 above, albeit at a grade of 0.0 g/t. The amount of dilution is considered appropriate based on mineralisation geometry, historical mining performance and the size of mining equipment to be used to extract ore. Expected mining recovery of the ore has been set at 93%. Minimum mining widths have been accounted for in the designs, with the utilisation of 40t or 90t trucking parameters depending upon the size of the pit excavation. No specific ground support requirements are needed outside of suitable pit slope design criteria based on specific geotechnical domains. Mining sequence is included in the mine scheduling process for determining the economic evaluation and takes into account available operating time and mining equipment size and performance. No Inferred material is included within the open pit statement, though in various pit shapes Inferred material is present. In these situations this Inferred material is classified as waste. <p>Underground Methodology</p> <ul style="list-style-type: none"> All underground Ore Reserves are based on 3D design strings and polygon derived stope

Criteria	JORC Code Explanation	Commentary
		<p>shapes following the Measured and Indicated Mineral Resource Estimates (in areas above the Mine Operating COG). A complete mine schedule is then derived from this design to create a LoM plan and financial analysis.</p> <ul style="list-style-type: none"> • Mining heights and widths are based on first principles and standardised mining methods employed widely throughout Western Australia. • Geotechnical evaluations have been used in determining the size and filling methodologies. Subsequent costs associated with these methods have been included within the study and budgeting formats. • In large, disseminated orebodies sub level caving, sub level open stoping or single level bench stoping production methodologies are used. • In narrow vein laminated quartz hosted domains, a conservative narrow bench style mining method is used. • In narrow flat dipping deposits, a flat long hole process is adopted (with fillets in the footwall for rill angle) and or jumbo stoping. • Stope shape parameters have been based on historical data (where possible) or expected stable hydraulic radius dimensions. • Stope inventories have been determined by cutting the geological wireframe at above the area specific COG and applying mining dilution and ore loss factors. The ore loss ratio accounts for pillar locations between the stopes (not operational ore loss) whilst dilution allows for conversion of the geological wireframe into a minable shape (planned dilution) as well as hangingwall relaxation and blasting overbreak (unplanned dilution). • Depending upon the style of mineralisation, sub level interval, blasthole diameters used and if secondary support is installed, total dilution ranges from 10 to 35%. • Minimum mining widths have been applied in the various mining methods. The only production style relevant to this constraint is 'narrow stoping' – where the minimum width is set at 1.5m in a 17.0m sub level interval. • Mining operational recovery for the underground mines is set at 85-100% due to the use of remote loading units as well as paste filling activities. Mining recovery is not inclusive of pillar loss – insitu mineralised material between adjacent stope panels. • Stope shape dimensions vary between the various methods. Default hydraulic radii (HR) are applied to each method and are derived either from historical production or geotechnical reports / recommendations. Where no data or exposure is available conservative HR values are used based on the contact domain type. • Mining sequence is included in the mine scheduling process for determining the economic evaluation and takes into account available operating time and mining equipment size and performance.
Metallurgical factors or assumptions	<ul style="list-style-type: none"> • The metallurgical process proposed and the appropriateness of that process to the style of mineralisation. • Whether the metallurgical process is well-tested technology or novel in nature. • The nature, amount and representativeness of metallurgical test work undertaken, the nature of the metallurgical domaining applied and the corresponding metallurgical recovery factors applied. • Any assumptions or allowances made for deleterious elements. • The existence of any bulk sample or pilot scale test work and the 	<p>BHO</p> <ul style="list-style-type: none"> • A long history of processing through several CIL processing existing facilities demonstrates the appropriateness of the process to the styles of mineralisation considered. • No deleterious elements are considered, the long history of processing has shown this to be not a material concern. <p>CGO</p> <ul style="list-style-type: none"> • CGO has an existing conventional CIL processing plant. • The plant has a nameplate capacity of 1.4Mtpa though this can be varied between 1.2- 1.6Mtpa pending rosters and material type. • Gold extraction is achieved using two staged crushing, ball milling with gravity concentration

Criteria	JORC Code Explanation	Commentary
	<p>degree to which such samples are considered representative of the orebody as a whole.</p> <ul style="list-style-type: none"> For minerals that are defined by a specification, has the ore reserve estimation been based on the appropriate mineralogy to meet the specifications? 	<p>and Carbon in Leach.</p> <ul style="list-style-type: none"> Despite CGO having a newly commissioned processing plant (2012/13 and subsequently restarted in 2018) a high portion of the Ore Reserve mill feed have extensive data when processed at other plants in the past 2-3 decades. This long history of processing demonstrates the appropriateness of the process to the styles of mineralisation considered. No deleterious elements are considered, as a long history of processing has shown this to be not a material concern. For the Ore Reserve, Plant recoveries of 80-93% have been utilised.
		<p>FGO</p> <ul style="list-style-type: none"> FGO has an existing conventional CIL processing plant – which has been operational in various periods since the late 1980's. The plant has a nameplate capacity of 1.0Mtpa though this can be varied between 0.8-1.2Mtpa pending rosters and material type. An extensive database of historical CIL recoveries as well as detailed metallurgical test work is available for the various deposits, and these have been incorporated into the COG analysis and financial models. For the Ore Reserve, plant recoveries of 93-95% have been utilised. <p>HGO</p> <ul style="list-style-type: none"> Gold extraction is achieved using staged crushing, ball milling with gravity concentration and Carbon in Leach. The Higginsville plant has operated since 2008. Treatment of ore is via conventional gravity recovery / intensive cyanidation and CIL is applied as industry standard technology. Additional test-work is instigated where notable changes to geology and mineralogy are identified. Small scale batch leach tests on primary Louis ore have indicated lower recoveries (80%) associated with finer gold and sulphide mineralisation. There have been no major examples of deleterious elements affecting gold extraction levels or bullion quality. Some minor variations in sulphide mineralogy have had short-term impacts on reagent consumptions. No bulk sample testing is required whilst geology/mineralogy is consistent based on treatment plant performance. <p>MGO</p> <ul style="list-style-type: none"> MGO has an existing conventional CIL processing plant – which has been operational in various periods since the late 1980's. The plant has a nameplate capacity of 1.6Mtpa though this can be varied between 1.2- 1.8Mtpa pending rosters and material type. Gold extraction is achieved using single stage crushing, SAG and ball milling with gravity concentration and Carbon in Leach. A long history of processing through the existing facility demonstrates the appropriateness of the process to the styles of mineralisation considered. No deleterious elements are considered, as a long history of processing has shown this to be not a material concern. For the Ore Reserve, plant recoveries of 85-92% have been utilised.

Criteria	JORC Code Explanation	Commentary
Environmental	<ul style="list-style-type: none"> The status of studies of potential environmental impacts of the mining and processing operation. Details of waste rock characterisation and the consideration of potential sites, status of design options considered and, where applicable, the status of approvals for process residue storage and waste dumps should be reported. 	<p>BHO</p> <ul style="list-style-type: none"> BHO operates under and in compliance with a number of operating environmental plans, which cover its environmental impacts and outputs as well as reporting guidelines / frequencies. Various Reserve inventories do not have current DMP / DWER licenses – though there are no abnormal conditions / factors associated with these assets which the competent person sees as potentially threatening to the particular project. The operation is frequently inspected by the regulatory authorities of DMP and DWER with continual feedback on environmental best practice and reporting results. Flood Management, Inclement Weather and Traffic Management Plans existing for the operation to minimise the risks of environmental impacts. Standard Operating Procedures for the transfer of hazardous materials and restocking of Dangerous Goods existing on site to mitigate the risk of these materials entering the environment. <p>CGO</p> <ul style="list-style-type: none"> CGO operates under and in compliance with a number of operating environmental plans, which cover its environmental impacts and outputs as well as reporting guidelines / frequencies. Various Reserve inventories do not have current DMP / DWER licenses – though there are no abnormal conditions / factors associated with these assets which the competent person sees as potentially threatening to the particular project. The operation is frequently inspected by the regulatory authorities of DMP and DWER with continual feedback on environmental best practice and reporting results. Flood Management, Inclement Weather and Traffic Management Plans existing for the operation to minimise the risks of environmental impacts. Standard Operating Procedures for the transfer of hazardous materials and restocking of Dangerous Goods existing on site to mitigate the risk of these materials entering the environment. <p>FGO</p> <ul style="list-style-type: none"> FGO operates under and in compliance with a number of operating environmental plans, which cover its environmental impacts and outputs as well as reporting guidelines / frequencies. Various Reserve inventories do not have current DMP / DWER licenses – though there are no abnormal conditions / factors associated with these assets which the competent person sees as potentially threatening to the particular project. The operation is frequently inspected by the regulatory authorities of DMP and DWER with continual feedback on environmental best practice and reporting results. Flood Management, Inclement Weather and Traffic Management Plans existing for the operation to minimise the risks of environmental impacts. Standard Operating Procedures for the transfer of hazardous materials and restocking of Dangerous Goods existing on site to mitigate the risk of these materials entering the environment. <p>HGO</p>

Criteria	JORC Code Explanation	Commentary
		<ul style="list-style-type: none"> HGO operates under and in compliance with a number of operating environmental plans, which cover its environmental impacts and outputs as well as reporting guidelines / frequencies. Various Reserve inventories do not have current DMP / DWER licenses – though there are no abnormal conditions / factors associated with these assets which the competent person sees as potentially threatening to the particular project. The operation is frequently inspected by the regulatory authorities of DMP and DWER with continual feedback on environmental best practice and reporting results. Flood Management, Inclement Weather and Traffic Management Plans existing for the operation to minimise the risks of environmental impacts. Standard Operating Procedures for the transfer of hazardous materials and restocking of Dangerous Goods existing on site to mitigate the risk of these materials entering the environment. <p>MGO</p> <ul style="list-style-type: none"> MGO operates under and in compliance with a number of operating environmental plans, which cover its environmental impacts and outputs as well as reporting guidelines / frequencies. Various Reserve inventories do not have current DMP / DWER licenses – though there are no abnormal conditions / factors associated with these assets which the competent person sees as potentially threatening to the particular project. The operation is frequently inspected by the regulatory authorities of DMP and DWER with continual feedback on environmental best practice and reporting results. Flood Management, Inclement Weather and Traffic Management Plans existing for the operation to minimise the risks of environmental impacts. Standard Operating Procedures for the transfer of hazardous materials and restocking of Dangerous Goods existing on site to mitigate the risk of these materials entering the environment.
Infrastructure	<ul style="list-style-type: none"> The existence of appropriate infrastructure: availability of land for plant development, power, water, transportation (particularly for bulk commodities), labour, accommodation; or the ease with which the infrastructure can be provided or accessed. 	<p>BHO</p> <ul style="list-style-type: none"> BHO is currently active and have substantial infrastructure in place including a large amount of underground infrastructure, major electrical, ventilation and pumping networks. Airstrip facilities are available at nearby Kambalda. <p>CGO</p> <ul style="list-style-type: none"> CGO has an operating plant and tailings storage facility, along with extensive mechanical and electrical maintenance facilities. The site also includes existing administration buildings as well as a 250-man accommodation camp facility. Power is provided by onsite diesel generation, with potable water sourced from nearby bore water (post treatment). Communications and roadways are existing. Airstrip facilities are available at the local Cue airstrip (20km). <p>FGO</p>

Criteria	JORC Code Explanation	Commentary
		<ul style="list-style-type: none"> • FGO has an operating plant and tailings storage facility, along with extensive mechanical and electrical maintenance facilities. • The site also includes existing administration buildings as well as a 200-man accommodation camp facility. • Power is provided by onsite diesel generation, with potable water sourced from nearby bore water (post treatment). • Communications and roadways are existing. • Airstrip facilities are available on site. <p>HGO</p> <ul style="list-style-type: none"> • HGO is currently active and have substantial infrastructure in place including a large amount of underground infrastructure, major electrical, ventilation and pumping networks. The main Higginsville location has an operating CIL plant a fully equipped laboratory, extensive workshop, administration facilities and a 350-person single person quarters nearby. • Infrastructure required for open production is also in place. • Airstrip facilities are available at nearby Kambalda. <p>MGO</p> <ul style="list-style-type: none"> • MGO has an operating plant and tailings storage facility, along with extensive mechanical and electrical maintenance facilities. • The site also includes existing administration buildings as well as a 300-man accommodation camp facility. • Power is provided by onsite diesel generation, with potable water sourced from nearby bore water (post treatment). • Communications and roadways are existing. • Airstrip facilities are available at the local Meekatharra airstrip (15km).
Costs	<ul style="list-style-type: none"> • The derivation of, or assumptions made, regarding projected capital costs in the study. • The methodology used to estimate operating costs. • Allowances made for the content of deleterious elements. • The source of exchange rates used in the study. • Derivation of transportation charges. • The basis for forecasting or source of treatment and refining charges, penalties for failure to meet specification, etc. • The allowances made for royalties payable, both Government and private. 	<p>BHO</p> <ul style="list-style-type: none"> • Processing costs are based on actual cost profiles with variations existing between the various oxide states. • Site G&A and portioned corporate overheads are included within the analysis (based upon previous Budget years actuals). • Mining costs are derived primarily from the current contractor and owner-operator cost profiles in the underground environment. • For the underground environment, if not site-specific mining rates are available, an appropriately selected operating mine is used for the basis of cost profiling. • Geology and Grade Control costs are incorporated in the overall cost profile and are based upon previously reconciled Budgetary forecasts. • Haulage costs used are either contractual rates or if in the case where a mine has none, a generic cost per tkm unit rate is utilised. • Both state government and private royalties are incorporated into costings as appropriate. <p>CGO</p> <ul style="list-style-type: none"> • Processing costs are based on actual cost profiles with variations existing between the various oxide states. • Site G&A and portioned corporate overheads are included within the analysis (based upon previous Budget years actuals).

Criteria	JORC Code Explanation	Commentary
		<ul style="list-style-type: none"> • Mining costs are derived primarily from the current contractor and owner-operator cost profiles in the underground environment. • For open pits where no current mining cost profiles are available for a forecasted Reserve, a historically 'validated' pit cost matrix is used – with variation allowances for density, fuel price and gear size. • For the underground environment, if not site-specific mining rates are available, an appropriately selected operating mine is used for the basis of cost profiling. • Geology and Grade Control costs are incorporated in the overall cost profile and are based upon previously reconciled Budgetary forecasts. • Haulage costs used are either contractual rates or if in the case where a mine has none, a generic cost per tkm unit rate is utilised. • Both state government and private royalties are incorporated into costings as appropriate. <p>FGO</p> <ul style="list-style-type: none"> • Processing costs are based on actual cost profiles with variations existing between the various oxide states. • Site G&A and portioned corporate overheads are included within the analysis (based upon previous Budget years actuals). • Mining costs are derived primarily from the current contractor and owner-operator cost profiles in the underground environment. • For open pits where no current mining cost profiles are available for a forecasted Reserve, a historically 'validated' pit cost matrix is used – with variation allowances for density, fuel price and gear size. • For the underground environment, if not site-specific mining rates are available, an appropriately selected operating mine is used for the basis of cost profiling. • Geology and Grade Control costs are incorporated in the overall cost profile and are based upon previously reconciled Budgetary forecasts. • Haulage costs used are either contractual rates or if in the case where a mine has none, a generic cost per tkm unit rate is utilised. • Both state government and private royalties are incorporated into costings as appropriate. <p>HGO</p> <ul style="list-style-type: none"> • Processing costs are based on actual cost profiles with variations existing between the various oxide states. • Site G&A and portioned corporate overheads are included within the analysis (based upon previous Budget years actuals). • Mining costs are derived primarily from the current contractor and owner-operator cost profiles in the underground environment. • For open pits where no current mining cost profiles are available for a forecasted Reserve, a historically 'validated' pit cost matrix is used – with variation allowances for density, fuel price and gear size. • For the underground environment, if not site-specific mining rates are available, an appropriately selected operating mine is used for the basis of cost profiling. • Geology and Grade Control costs are incorporated in the overall cost profile and are based upon previously reconciled Budgetary forecasts. • Haulage costs used are either contractual rates or if in the case where a mine has none, a

Criteria	JORC Code Explanation	Commentary
		<p>generic cost per tkm unit rate is utilised.</p> <ul style="list-style-type: none"> Both state government and private royalties are incorporated into costings as appropriate. <p>MGO</p> <ul style="list-style-type: none"> Processing costs are based on actual cost profiles with variations existing between the various oxide states. Site G&A and portioned corporate overheads are included within the analysis (based upon previous Budget years actuals). Mining costs are derived primarily from the current contractor and owner-operator cost profiles in the underground environment. For open pits where no current mining cost profiles are available for a forecasted Reserve, a historically 'validated' pit cost matrix is used – with variation allowances for density, fuel price and gear size. For the underground environment, if not site-specific mining rates are available, an appropriately selected operating mine is used for the basis of cost profiling. Geology and Grade Control costs are incorporated in the overall cost profile and are based upon previously reconciled Budgetary forecasts. Haulage costs used are either contractual rates or if in the case where a mine has none, a generic cost per tkm unit rate is utilised. Both state government and private royalties are incorporated into costings as appropriate.
Revenue factors	<ul style="list-style-type: none"> The derivation of, or assumptions made regarding revenue factors including head grade, metal or commodity price(s) exchange rates, transportation and treatment charges, penalties, net smelter returns, etc. The derivation of assumptions made of metal or commodity price(s), for the principal metals, minerals and co-products. 	<ul style="list-style-type: none"> Mine Revenue, COGs, open pit optimisation and royalty costs are based on the long-term forecast of A\$3,000/oz. No allowance is made for silver by-products.
Market assessment	<ul style="list-style-type: none"> The demand, supply and stock situation for the particular commodity, consumption trends and factors likely to affect supply and demand into the future. A customer and competitor analysis along with the identification of likely market windows for the product. Price and volume forecasts and the basis for these forecasts. For industrial minerals the customer specification, testing and acceptance requirements prior to a supply contract. 	<ul style="list-style-type: none"> Detailed economic studies of the gold market and future price estimates are considered by Westgold and applied in the estimation of revenue, cut-off grade analysis and future mine planning decisions. There remains strong demand and no apparent risk to the long-term demand for the gold.
Economic	<ul style="list-style-type: none"> The inputs to the economic analysis to produce the net present value (NPV) in the study, the source and confidence of these economic inputs including estimated inflation, discount rate, etc. NPV ranges and sensitivity to variations in the significant assumptions and inputs. 	<ul style="list-style-type: none"> Each separate mine (open pit, underground or stockpile) has been assessed on a standard operating cash generating model. Capital costs have been included thereafter to determine an economic outcome. Subsequently each Operating centre (MGO, CGO and FGP) has had a Discounted Cash Flow model constructed to further demonstrate the Reserve has a positive economic outcome. A discount rate of 8% is allied in DCF modelling. No escalation of costs and gold price is included. Sensitivity analysis of key financial and physical parameters is applied to future development projects.
Social	<ul style="list-style-type: none"> The status of agreements with key stakeholders and matters leading to social licence to operate. 	BHO

Criteria	JORC Code Explanation	Commentary
		<ul style="list-style-type: none"> BHO is fully permitted and a major contributor to the local and regional economy. It has no external pressures that impact its operation or which could potentially jeopardise its continuous operation. <p>CGO</p> <ul style="list-style-type: none"> CGO is fully permitted and a major contributor to the local and regional economy. It has no external pressures that impact its operation or which could potentially jeopardise its continuous operation. As new open pits or underground operations develop the site will require separate environmental approvals from the different regulating bodies. Where required, the operation has a Native Title and Pastoral Agreement. <p>FGO</p> <ul style="list-style-type: none"> FGO is fully permitted and a major contributor to the local and regional economy. It has no external pressures that impact its operation or which could potentially jeopardise its continuous operation. As new open pits or underground operations develop the site will require separate environmental approvals from the different regulating bodies. Where required, the operation has a Native Title and Pastoral Agreement. <p>HGO</p> <ul style="list-style-type: none"> HGO is fully permitted and a major contributor to the local and regional economy. It has no external pressures that impact its operation or which could potentially jeopardise its continuous operation. As new open pits or underground operations develop the site will require separate environmental approvals from the different regulating bodies. <p>MGO</p> <ul style="list-style-type: none"> MGO is fully permitted and a major contributor to the local and regional economy. It has no external pressures that impact its operation or which could potentially jeopardise its continuous operation. As new open pits or underground operations develop the site will require separate environmental approvals from the different regulating bodies. Where required, the operation has a Native Title and Pastoral Agreement.
Other	<ul style="list-style-type: none"> To the extent relevant, the impact of the following on the project and/or on the estimation and classification of the Ore Reserves: Any identified material naturally occurring risks. The status of material legal agreements and marketing arrangements. The status of governmental agreements and approvals critical to the viability of the project, such as mineral tenement status, and government and statutory approvals. There must be reasonable grounds to expect that all necessary Government approvals will be received within the timeframes anticipated in the Pre-Feasibility or Feasibility study. Highlight and discuss the materiality of any unresolved matter that is dependent on a third party on which extraction of the reserve is contingent. 	<ul style="list-style-type: none"> BHO is an active mining project. CGO is an active mining project. FGO is an active mining project. HGO is an active mining project. MGO is an active mining project.

Criteria	JORC Code Explanation	Commentary
Classification	<ul style="list-style-type: none"> The basis for the classification of the Ore Reserves into varying confidence categories. Whether the result appropriately reflects the Competent Person's view of the deposit. The proportion of Probable Ore Reserves that have been derived from Measured Mineral Resources (if any). 	<ul style="list-style-type: none"> The basis for classification of the Mineral Resource into different categories is made in accordance with the recommendations of the JORC Code 2012. Measured Mineral Resources have a high level of confidence and are generally defined in three dimensions with accurately defined or normally mineralised developed exposure. Indicated Mineral Resources have a slightly lower level of confidence but contain substantial drilling and are in most instances capitally developed or well defined from a mining perspective. Inferred Mineral Resources always contain significant geological evidence of existence and are drilled, but not to the same density. There is no classification of any Mineral Resources that is not drilled or defined by substantial physical sampling works. Some Measured Resources have been classified as Proven, and some are defined as Probable Ore Reserves based on internal judgement of the mining, geotechnical, processing and or cost profile estimates. No Indicated Mineral Resources material has been converted into Proven Ore Reserve. The resultant Ore Reserve classification appropriately reflects the view of the Competent Person.
Audits or reviews	<ul style="list-style-type: none"> The results of any audits or reviews of Ore Reserve estimates. 	<ul style="list-style-type: none"> Ore Reserves inventories and the use of appropriate modifying factors are reviewed internally on an annual basis. Additionally, mine design and cost profiles are regularly reviewed by WGX operational quarterly reviews. Financial auditing processes, Dataroom reviews for asset sales / purchases and stockbroker analysis regularly 'truth test' the assumptions made on Ore Reserve designs and assumptions.

Criteria	JORC Code Explanation	Commentary
Discussion of relative accuracy/ confidence	<ul style="list-style-type: none"> Where appropriate a statement of the relative accuracy and confidence level in the Ore Reserve estimate using an approach or procedure deemed appropriate by the Competent Person. For example, the application of statistical or geostatistical procedures to quantify the relative accuracy of the reserve within stated confidence limits, or, if such an approach is not deemed appropriate, a qualitative discussion of the factors which could affect the relative accuracy and confidence of the estimate. The statement should specify whether it relates to global or local estimates, and, if local, state the relevant tonnages, which should be relevant to technical and economic evaluation. Documentation should include assumptions made and the procedures used. Accuracy and confidence discussions should extend to specific discussions of any applied Modifying Factors that may have a material impact on Ore Reserve viability, or for which there are remaining areas of uncertainty at the current study stage. It is recognised that this may not be possible or appropriate in all circumstances. These statements of relative accuracy and confidence of the estimate should be compared with production data, where available. 	<ul style="list-style-type: none"> Whilst it should be acknowledged that all Ore Reserves are based primarily upon an estimate of contained insitu gold (the Mineral Resources Estimate), it is the competent person's view that the consolidated Reserve inventory is highly achievable in entirety. Given the entire Ore Reserves inventory is within existing operations, with budgetary style cost models and current contractual mining / processing consumable rates, coupled with an extensive historical knowledge / dataset of the Mineral Resources, it is the Competent Person's view that the significant mining modifying factors (COGs, geotechnical parameters and dilution ratio's) applied are achievable and or within the limits of 10% sensitivity analysis.