

19th February 2024

ASX Market Announcements

DRILL SITES SELECTED FOR RARE EARTHS DRILLING PROGRAM **EL 6977 KARTE, EL 6978 COODALYA AND EL 6856 LAMEROO, LIMESTONE COAST,** **SOUTH AUSTRALIA**

Kaili Resources Limited (“KLR”) is pleased to announce that it has completed roadside traverses across the Lameroo, Karte and Coodalya tenements for rare earths elements (“REE”) exploration (**Figure 1**) in the Murray Basin, Limestone Coast, South Australia.

Drill sites on council road verges have been selected for the forthcoming drilling program to minimise disruption to the public, private properties and flora. Discussions have also been held with relevant local councils in preparation of the proposed exploration activities. The plan is to Aircore drill shallow holes of up to 20m deep to test for potential REE mineralisation within the Loxton Parilla Sands.

South of the KLR tenements Australian Rare Earths has reported exploration success with estimated JORC 2012 resource of 236Mt @ 748ppm Total Rare Earth Oxides (TREO) (*AR3 ASX Release of Quarterly Activities Report on 30th September 2024*).

KLR will seek approval of PEPRs (program for environment protection and rehabilitation) by the Department of Energy and Mining of South Australia (DEM) prior to commencement of drilling in the selected locations (**Figures 2 and 3**).

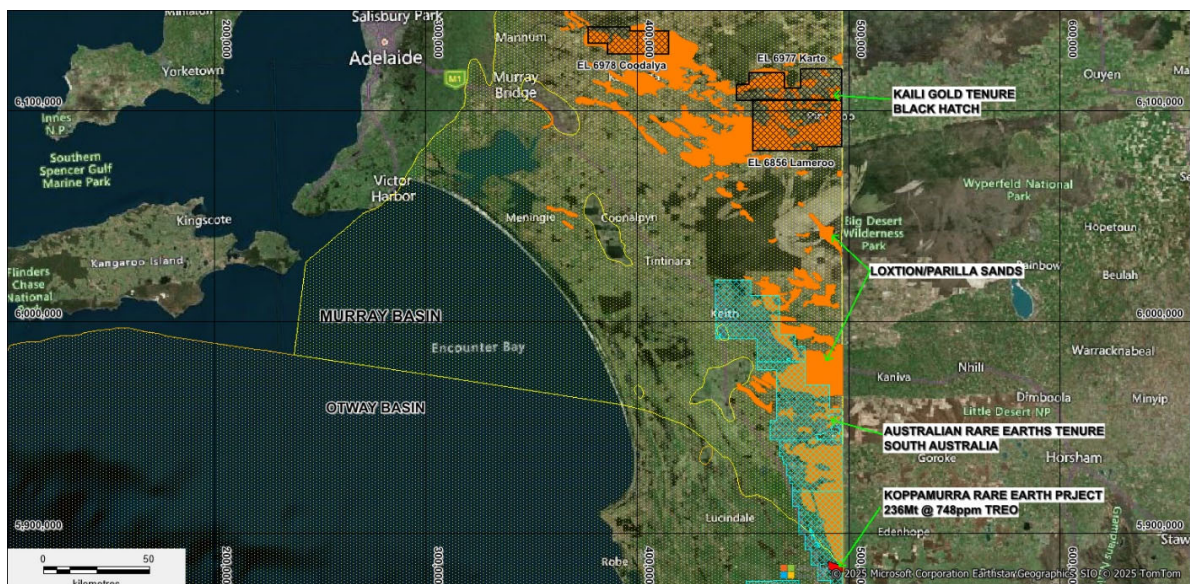


Figure 1: Location of Lameroo, Karte and Coodalya Rare Earth Exploration Tenements
in Murray Basin, Limestone Coast, South Australia

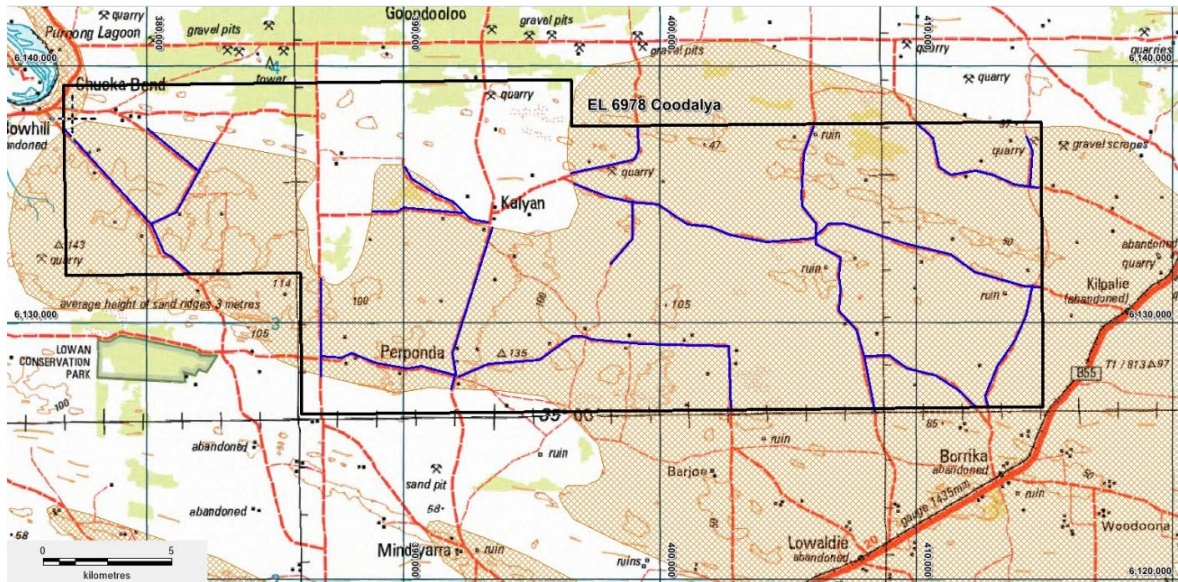


Figure 2: Vehicular traverses in blue targeting the Loxton/Parilla Sands in the Coodaly Tenement

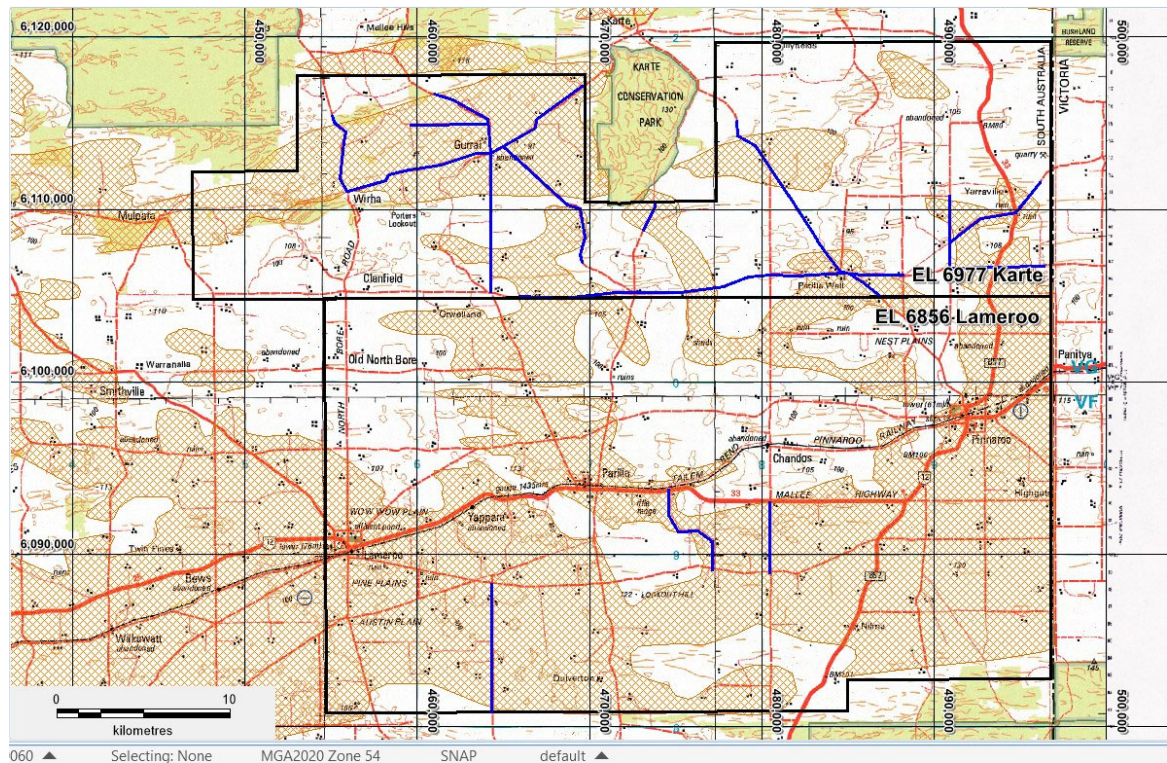


Figure 3: Vehicular traverses in blue targeting the Loxton/Parilla Sands in the Karte and Lameroo Tenements

Competent Person Statement

The information in the report above that relates to Exploration Results, Exploration Targets and Mineral Resources is based on information compiled by Mr Mark Derriman, who is the Company's Consultant Geologist and a member of The Australian Institute of Geoscientists (1566). Mr Mark Derriman has sufficient experience that is relevant to the style of mineralization and type of deposit under consideration and to the activities which he is undertaking to qualify as a Competent Person as defined in the 2012 Edition of the Australasian Code for Reporting of Exploration Results, Exploration Targets, Mineral Resources and Ore Reserves. Mr Mark Derriman consents to the inclusion in this report of matters based on his information in the form and context in which it appears.

Forward-Looking Statement

This document may include forward-looking statements. Forward-looking statements include, but are not limited to, statements concerning planned exploration program and other statements that are not historical facts. When used in this document, the words such as "could", "plan", "estimate", "expect", "intend", "may", "potential", "should" and similar expressions are forward-looking statements. Although Kaili Resources Limited believes that its expectations reflected in these forward-looking statements are reasonable, such statements involve risks and uncertainties and no assurance can be given that actual results will be consistent with these forward-looking statements.

Authorised by.

Long Zhao
Director/Company Secretary

Contact

T: +61 2 9264 6288 E : contact@kailigroup.com.au