

18 February 2025

ASX Market Announcements

**FIELD RECONNAISSANCE FOR RARE EARTH DRILLING PROGRAM
 EL 6795 PARRAKIE, EL 6975 WILKAWATT AND EL 7015 PEAKE**

Ausmon Resources Limited (“Company”) is pleased to announce that in preparing the forthcoming drilling program it has completed several vehicular traverses within the tenements Peake, Wilkawatt and undrilled part of Parrakie (**Figure 1**) in Limestone Coast in South Australia to select sites on Council roadside verges for shallow (<20m) Aircore Drilling.

These 3 tenements cover a total area of 2,317 km² in the Murray Basin that host Loxton/Parilla sands prospective for Rare Earth Elements (“REE”). Australian Rare Earths, exploring to the south of these tenements has reported significant exploration success with estimated JORC 2012 resource of 236Mt @ 748 ppm Total Rare Earth Oxides (TREO) (AR3 ASX Release on 30th September 2024). Two drilling programs in 2024 by the Company within Parrakie provided very encouraging TREO results and Zirconium presence (AOA ASX releases on 29 July 2024 and 21 March 2024).

The Company is preparing documents for approval of the drilling PEPR (program for environment protection and rehabilitation) by the Department of Energy and Mining of South Australia (DEM). A locally based drilling crew has been reserved to commence the drilling once the DEM’s consent is obtained.

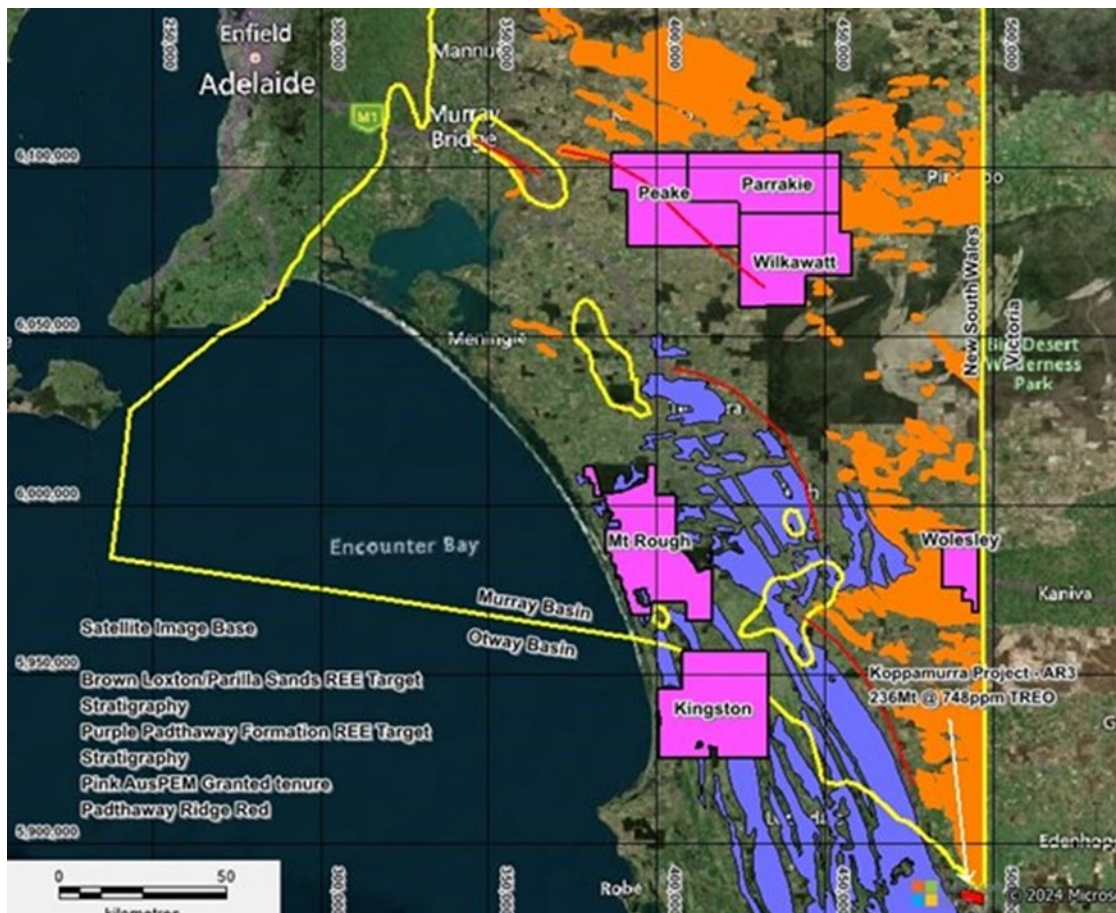


Figure 1: Location of Company’s tenements (pink shade) within the Murray and Otway Basins

For personal use only

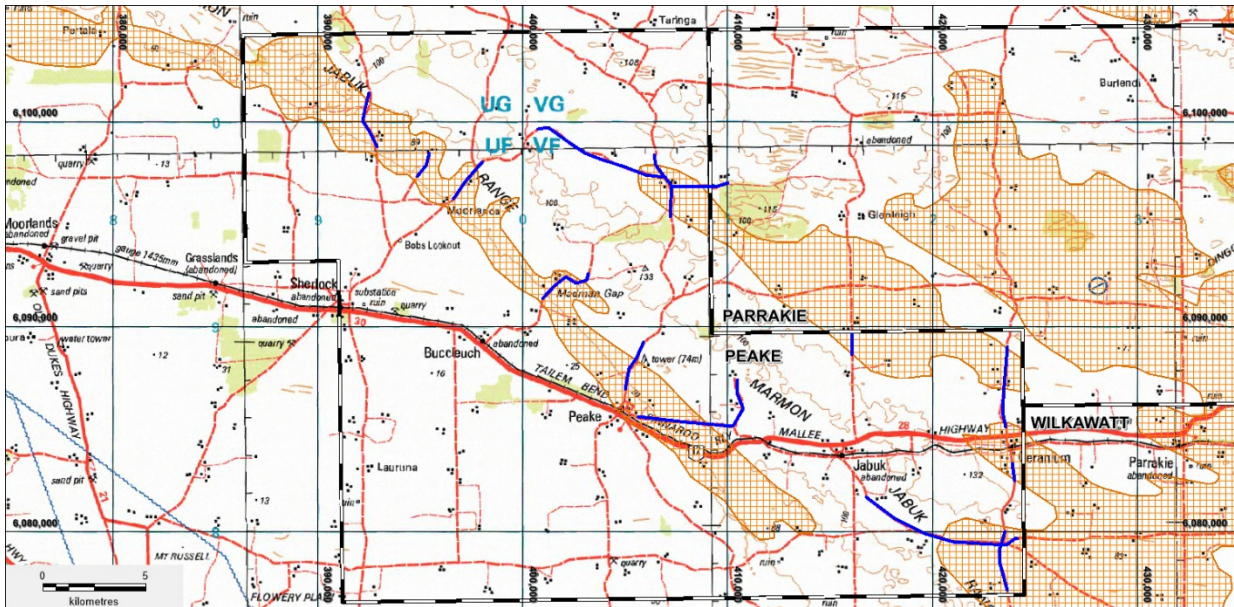


Figure 2: Location of the roadside traverses in blue across the Peake tenement and a small extension into the Parrakie tenement. The prospective Loxton/Parilla sands are shown in brown hatching

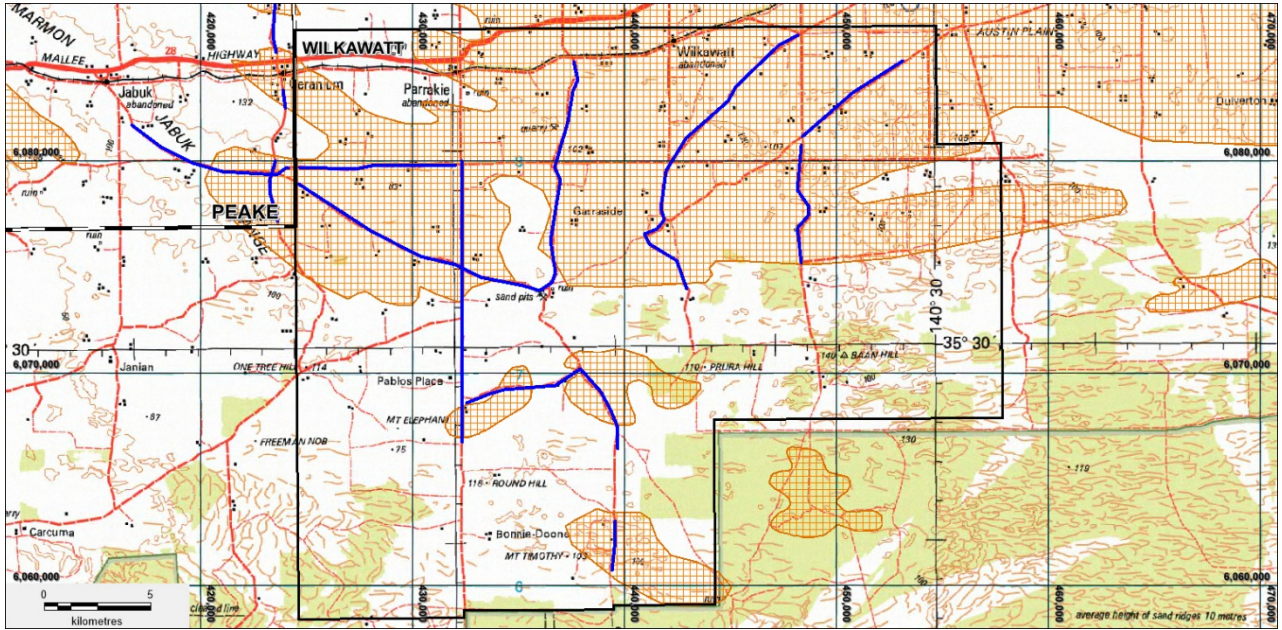


Figure 3: Location of the roadside traverses across the Wilkawatt tenement. The prospective Loxton Parilla Sands are shown in brown hatching.

Competent Person Statement

The information in the report above that relates to Exploration Results, Exploration Targets and Mineral Resources is based on information compiled by Mr Mark Derriman, who is the Company's Consultant Geologist and a member of The Australian Institute of Geoscientists (1566). Mr Mark Derriman has sufficient experience that is relevant to the style of mineralization and type of deposit under consideration and to the activities which he is undertaking to qualify as a Competent Person as defined in the 2012 Edition of the Australasian Code for Reporting of Exploration Results, Exploration Targets, Mineral Resources and Ore Reserves. Mr Mark Derriman consents to the inclusion in this report of matters based on his information in the form and context in which it appears.

Forward-Looking Statement

This document may include forward-looking statements. Forward-looking statements include, but are not limited to, statements concerning planned exploration program and other statements that are not historical facts. When used in this document, the words such as "could", "plan", "estimate", "expect", "intend", "may", "potential", "should" and similar expressions are forward-looking statements. Although Ausmon Resources Limited believes that its expectations reflected in these forward-looking statements are reasonable, such statements involve risks and uncertainties and no assurance can be given that actual results will be consistent with these forward-looking statements.

Authorised by:

Eric Sam Yue

Executive Director/Secretary

T: 02 9264 6988

E: office@ausmonresources.com.au

For personal use only