

# ASX RELEASE

10 February 2025



## Drilling Underway at the Bygoo Tin Project

### HIGHLIGHTS

- Maiden RC drilling program underway at the Bygoo North Prospect
- Testing continuity and extensions of high-grade tin mineralisation, such as:
  - 35m @ 2.10% Sn from 43m, incl. 5m @ 6.00% Sn from 65m (BNRC011)
  - 35m @ 1.71% Sn from 94m, incl 6m @ 5.04% Sn from 106m (BNRC085)
  - 18m @ 1.35% Sn from 58m, incl 6m @ 2.27% Sn from 65m (BNRC065)<sup>1</sup>
- Drill program anticipated to run over two weeks, with first results in March
- The start of an intensive exploration campaign at the Bygoo Project, testing multiple advanced and early-stage tin prospects

Caspin Resources Limited (Caspin or the Company) (ASX: CPN) is pleased to provide an update on exploration activities at its 100% owned Bygoo Tin Project in New South Wales. The Company's maiden RC drilling program has now commenced and is expected to run for several weeks.

Sunrise over Bygoo North, February 2025



<sup>1</sup> Refer ASX announcement 23 September 2024

Caspin Resources Limited  
ABN 33 641 813 587

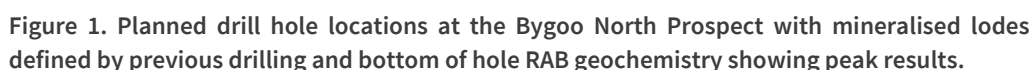
📍 Ground Floor, 675 Murray Street  
West Perth WA 6005, Australia

✉ PO Box 558, West Perth WA 6872

[www.caspin.com.au](http://www.caspin.com.au)  
ASX Code: **CPN**

E [admin@caspin.com.au](mailto:admin@caspin.com.au)  
T +61 8 6373 2000



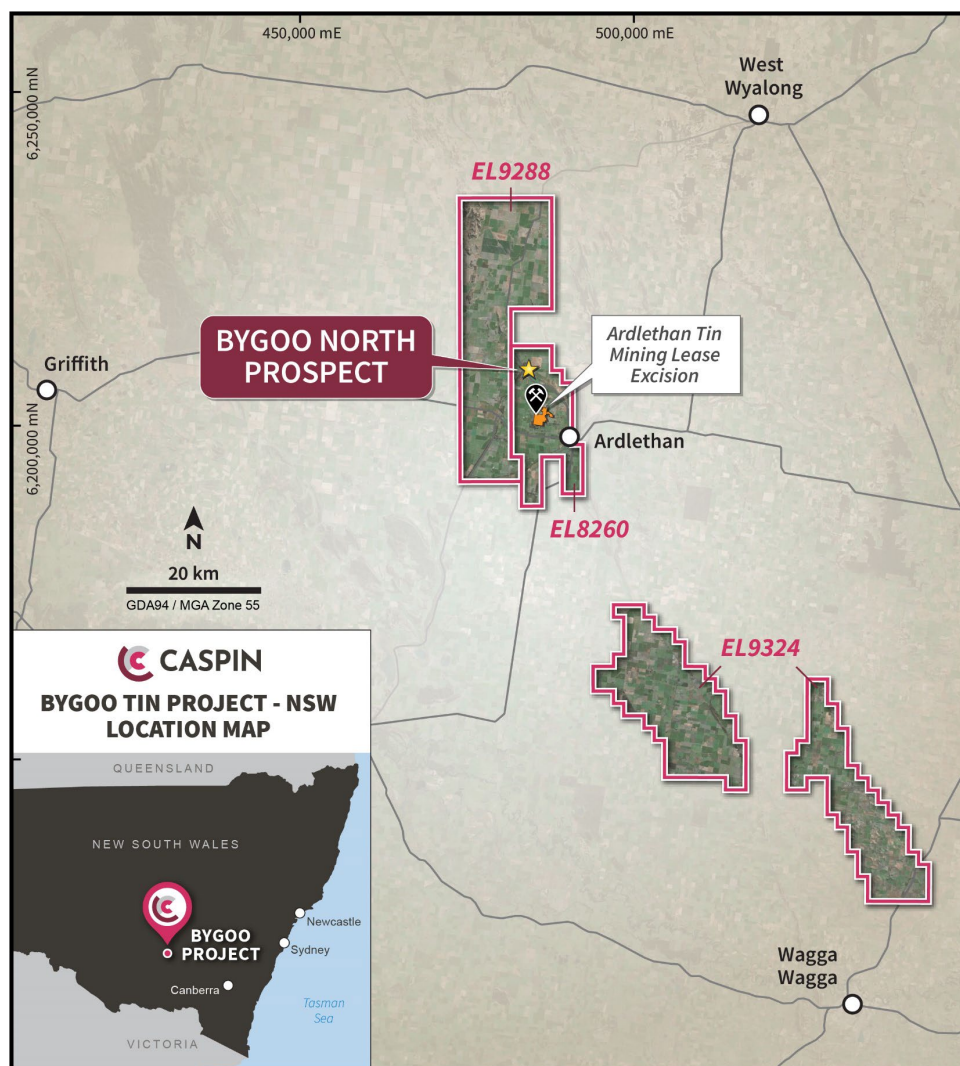


Previous drilling at the Bygoo North Prospect has defined at least five separate lodes of tin mineralisation with some of the best holes returning intercepts such as 35m @ 2.10% Sn from 43m (BNRC011) and 35m @ 1.71% Sn from 94m (BNRC085). The most recent discoveries have been high-grade, but also steeply dipping, indicating older generations of shallow, vertical drilling was ineffective. The Company aims to test the continuity and extensions of high-grade mineralisation at several of the mineralised lodes (Figure 1).

More specifically, the program will aim to:

- Test continuity of high-grade mineralisation at the Main Lode which hosts some of the best mineralisation drilled to date.
- Test the extensions and continuity of a potential new lode north of the P380 lode.
- Test the eastern extension of the Smith Lode, approximately 300m south of the main workings. Previous intercept of 25m @ 0.49% Sn from 60m in BNRC087, the last hole to be drilled at the prospect.
- Test for extensions of the Stewart Lode which is effectively only drilled on a single section and open to the north. Previous drilling has returned 25m @ 0.91% Sn from 61m, including 4m @ 1.72% Sn from 65m (BNRC078<sup>1</sup>) and 37m @ 0.63% Sn from 74m including 4m @ 1.69% Sn from 88m (BNRC069<sup>1</sup>).
- Test a RAB bottom of hole geochemical anomaly, with a peak of 0.14% Sn<sup>2</sup>, and beneath historical workings (never drill tested) which appear to be the northern extensions of the Stewart Lode, with potential strike of at least 400m.

The program will comprise approximately 1,500m and take 10-14 days to complete with initial results due from the middle of March. The Company looks forward to providing further updates over the coming weeks.



This announcement is authorised for release by the Board of Caspin Resources Limited.

<sup>2</sup> Refer ASX announcement 4 December 2024



-ENDS-

For further details, please contact:

### Greg Miles

Managing Director

[admin@caspin.com.au](mailto:admin@caspin.com.au)

Tel: +61 8 6373 2000

### Competent Persons Statement

The information in this report that relates to Exploration Results is based on information compiled or reviewed by Mr Greg Miles, a Competent Person who is an employee of the company. Mr Miles is a Member of the Australian Institute of Geoscientists and has sufficient experience of relevance to the styles of mineralisation and the types of deposits under consideration, and to the activities undertaken, to qualify as a Competent Person as defined in the 2012 Edition of the Joint Ore Reserves Committee (JORC) Australasian Code for Reporting of Exploration Results, Mineral Resources and Ore Reserves. Mr Miles consents to the inclusion in this report of the matters based on his information in the form and context in which it appears.

The Company confirms that it is not aware of any new information or data that materially affects the Exploration Results information included in this report from previous Company announcements announced to the ASX 23 September 2024, 13 November 2024 and 4 December 2024.

### ABOUT CASPIN:

Caspin Resources Limited (ASX Code: **CPN**) is a mineral exploration company based in Perth, Western Australia, with expertise in early-stage exploration and development. The Company currently has three Australian projects offering a diverse mix of commodities and excellent opportunity to add value through exploration and discovery.

- The Company has recently completed the acquisition of the **Bygoo Project** in New South Wales, an advanced, high-grade tin project located in a prolific tin producing region. Positioned within the Wagga Tin Granites, a mineralised belt with many occurrences of tin and associated metals, the project surrounds the historic Ardlethan Tin Mine, one of Australia's largest producing tin mines on mainland Australia.
- The Company's **Yarawindah Brook Project** located in the West Yilgarn region of WA, an exciting new mineral province hosting the Gonnevillle PGE-Ni-Cu Deposit owned by Chalice Mining Limited only 40km to the south. Initial drill campaigns at Yarawindah Brook have made discoveries of PGE, nickel and copper sulphide mineralisation. Further exploration is focussed on prospective near-surface targets with potential for high-grade massive nickel and copper sulphide.
- Mount Squires** is a large scale, greenfield gold, rare earths and base metal project located in the West Musgrave region of Western Australia. The project is located adjacent to the western border of BHP's \$1.7b West Musgrave mine development which hosts the large Nebo-Babel Ni-Cu sulphide deposits. The Company has discovered rare earth elements (REE) and currently has an exclusive option agreement with Australian Strategic Materials allowing them to earn up to 75% of REE rights, whilst the Company continues its search for nickel and copper.

These projects are strategically positioned in Australia's premier mineral districts, providing excellent exposure to new critical and battery mineral markets.

FOLLOW US:   

