



AUSMON RESOURCES LIMITED

AGM PRESENTATION

Mark Derriman(Chief Technical Officer)

29th NOVEMBER 2024

Authorised by: Boris Patkin – Chairman

Contact: Tel: +612 9264 6288 Email: office@ausmonresources.com.au



Disclaimer

Certain statements contained in this presentation, including information as to the future financial or operating performance of Ausmon Resources Limited and its projects, are forward-looking statements. Such forward looking statements:

- Are necessarily based upon a number of assumptions and estimates that, while considered reasonable by Ausmon Resources Limited, are inherently subject to significant technical, business, economic, competitive, political and social uncertainties and contingencies;
- Involve known and unknown risks and uncertainties that could cause actual events or results to differ materially from estimated or anticipated events or results reflected in such forward-looking statements; and
- May include, among other things, statements regarding targets, estimates and assumptions in respect of production, prices, operating costs, results, capital expenditures, reserves and resources, and are or may be based on assumptions and estimates related to future technical, economic, market, political, social and other conditions.

Ausmon Resources Limited disclaims any intent or obligation to update publicly any forward-looking statements, whether as a result of new information, future events or otherwise.

All forward-looking statements made in this presentation are qualified by the foregoing cautionary statements. Investors are cautioned that forward-looking statements are not guarantees of future performance and accordingly investors are cautioned not to rely on forward-looking statements due to the inherent uncertainty therein.

Competent Person Statement

The information in this presentation that relates to Exploration Results, Exploration Targets and Mineral Resources is based on information compiled by Mr Mark Derriman, who is the Company's Consultant Geologist and a member of The Australian Institute of Geoscientists (1566). Mr Mark Derriman has sufficient experience that is relevant to the style of mineralization and type of deposit under consideration and to the activities which he is undertaking to qualify as a Competent Person as defined in the 2012 Edition of the Australasian Code for Reporting of Exploration Results, Exploration Targets, Mineral Resources and Ore Reserves. Mr Mark Derriman consents to the inclusion in this report of matters based on his information in the form and context in which it appears.

The Company confirms that it is not aware of any new information or data that materially affects the information included in the original ASX announcements referred to in this presentation, and in the case of estimates of Mineral Resources, that all material assumptions and technical parameters underpinning the estimates in the relevant ASX announcements continue to apply and have not materially changed. The Company confirms that the form and context in which the Competent Person's findings are presented have not been materially modified from the original market announcements.

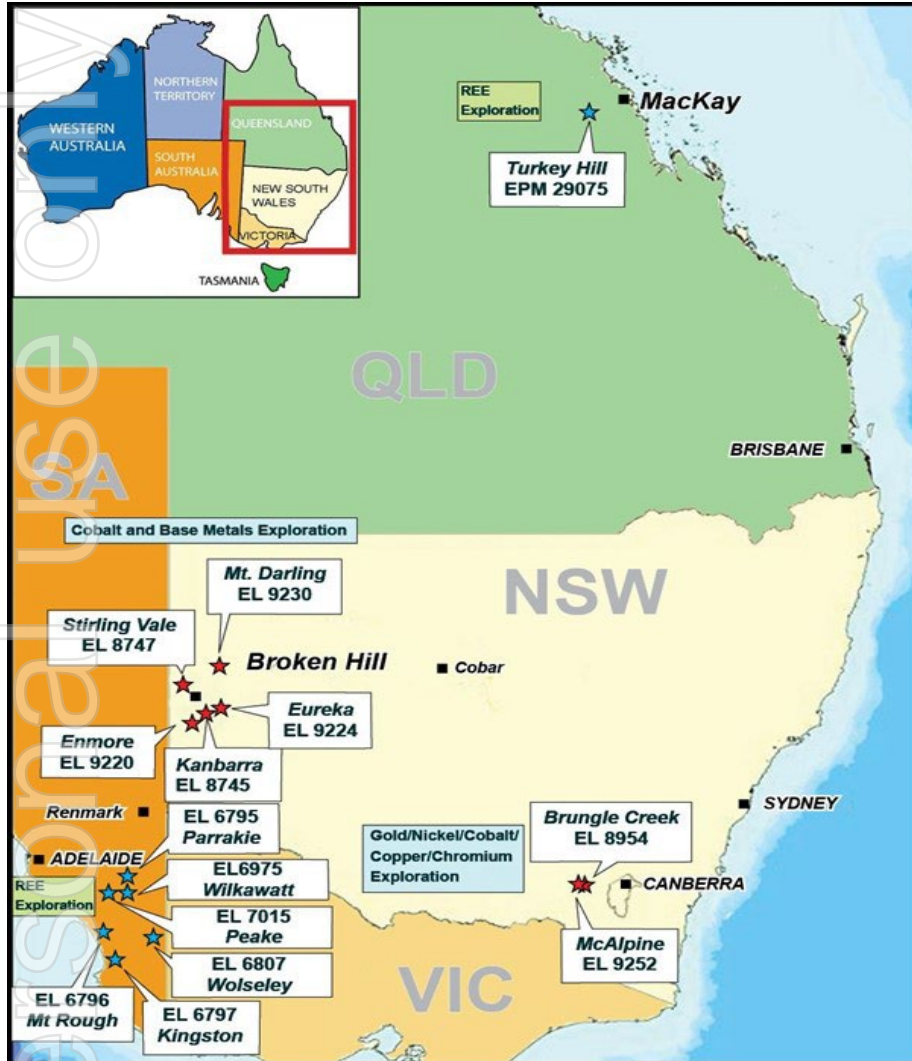
NSW : 7 Granted Tenements - Gold & Base Metals

SA : 6 Tenements Granted – REEs

QLD : 1 Tenement Granted - REEs



AUSMON RESOURCES
LIMITED



Aircore
Drilling at
Parrakie

RC drilling at
East Borehole



Rare Earth Elements Exploration



AUSMON RESOURCES
LIMITED

Limestone Coast - South Australia

- 2024 Completed two phases of Aircore drilling at Parrakie.
 - Phase 1 elevated TREO to 1,032ppm with several other intervals between 400 and 800ppm and Zr to 0.413%. Zr being a key component the heavy mineral Zircon. *(ASX release 21 March 2024)*
 - Phase 2 drilling encountered several TREO intervals > 1,000ppm to a maximum of 1m @ 1,253ppm from 12m and Zr to 4,400ppm from 13-14m. *(ASX Release 29 July 2024)*
- Q1 2025 Aircore drilling: EPEPRs lodged for Wolseley, Mt Rough and Kingston.
- New tenement (Peake) granted for 6 years to 2030.
- 2025 Aircore drilling planned in Wilkawatt and Peake.
- Total 6 tenements covering 4,250 square kms.

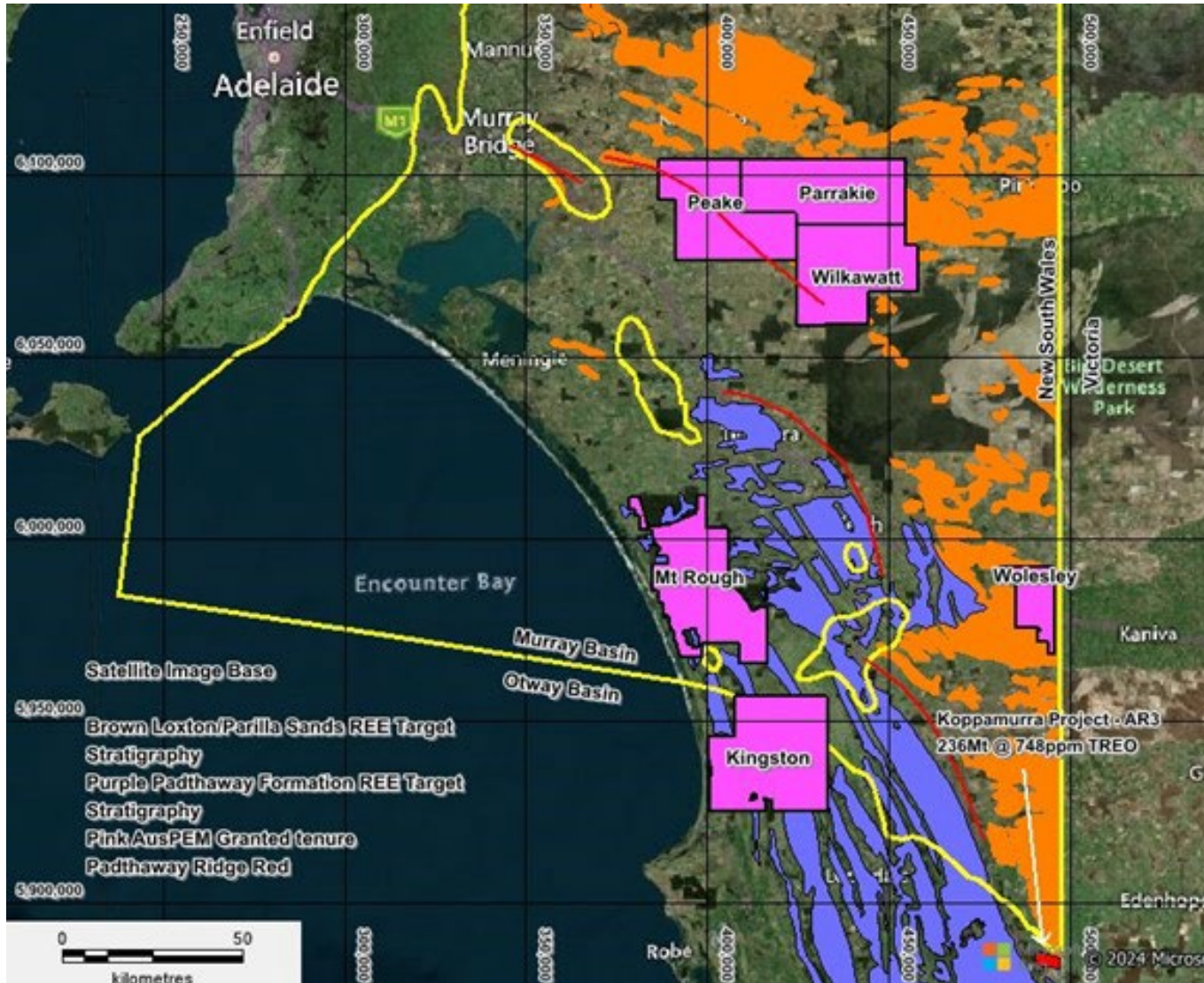
Drummond Basin – Queensland

- New tenement (Turkey Hill) granted for 5 years to 2029.
- Data compilation followed by geological and regolith mapping.
- Surficial geochemical sampling with PXRF and Aircore Drilling.

Personal use only



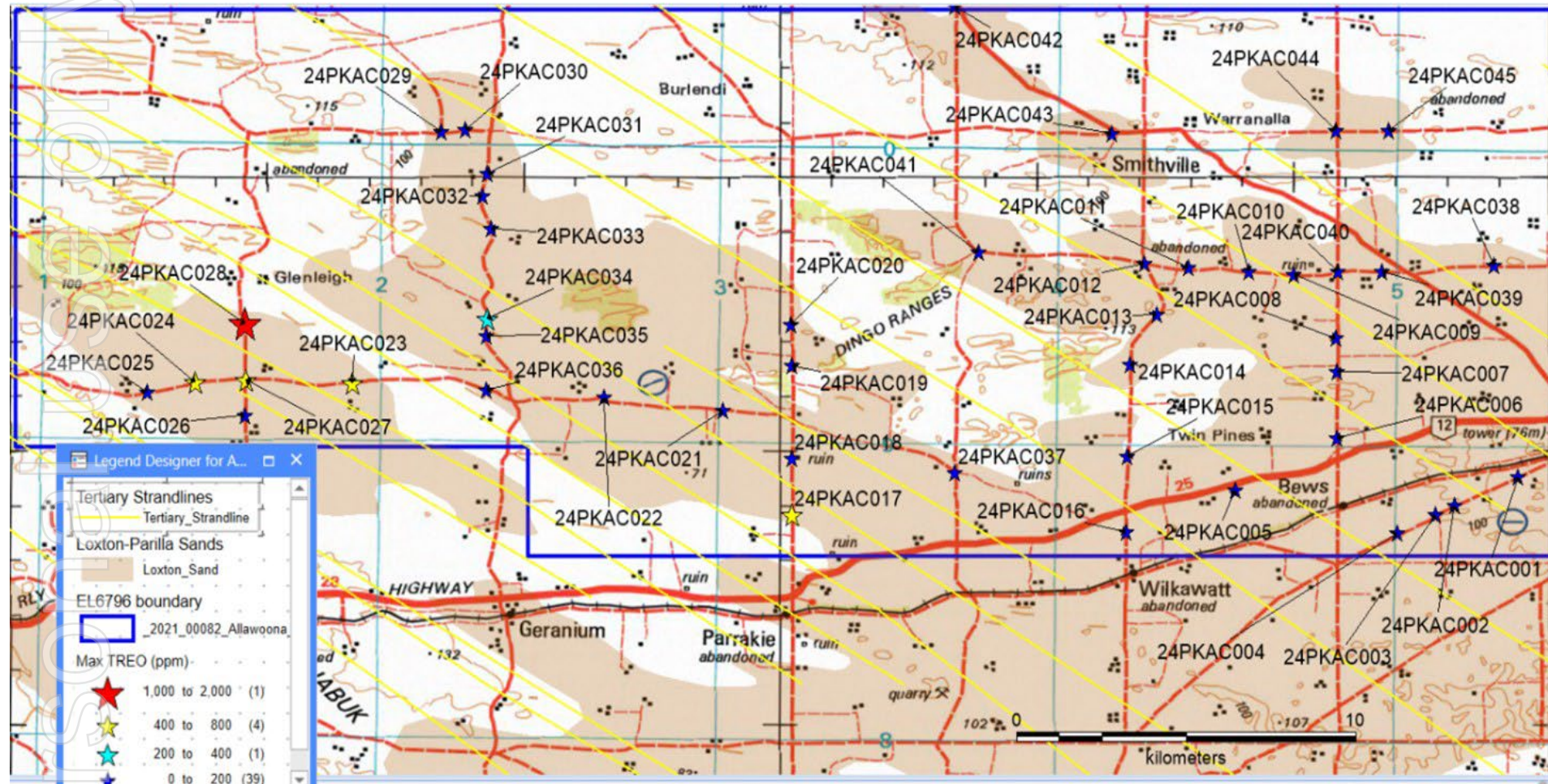
SA Limestone Coast Projects



ersonal use only



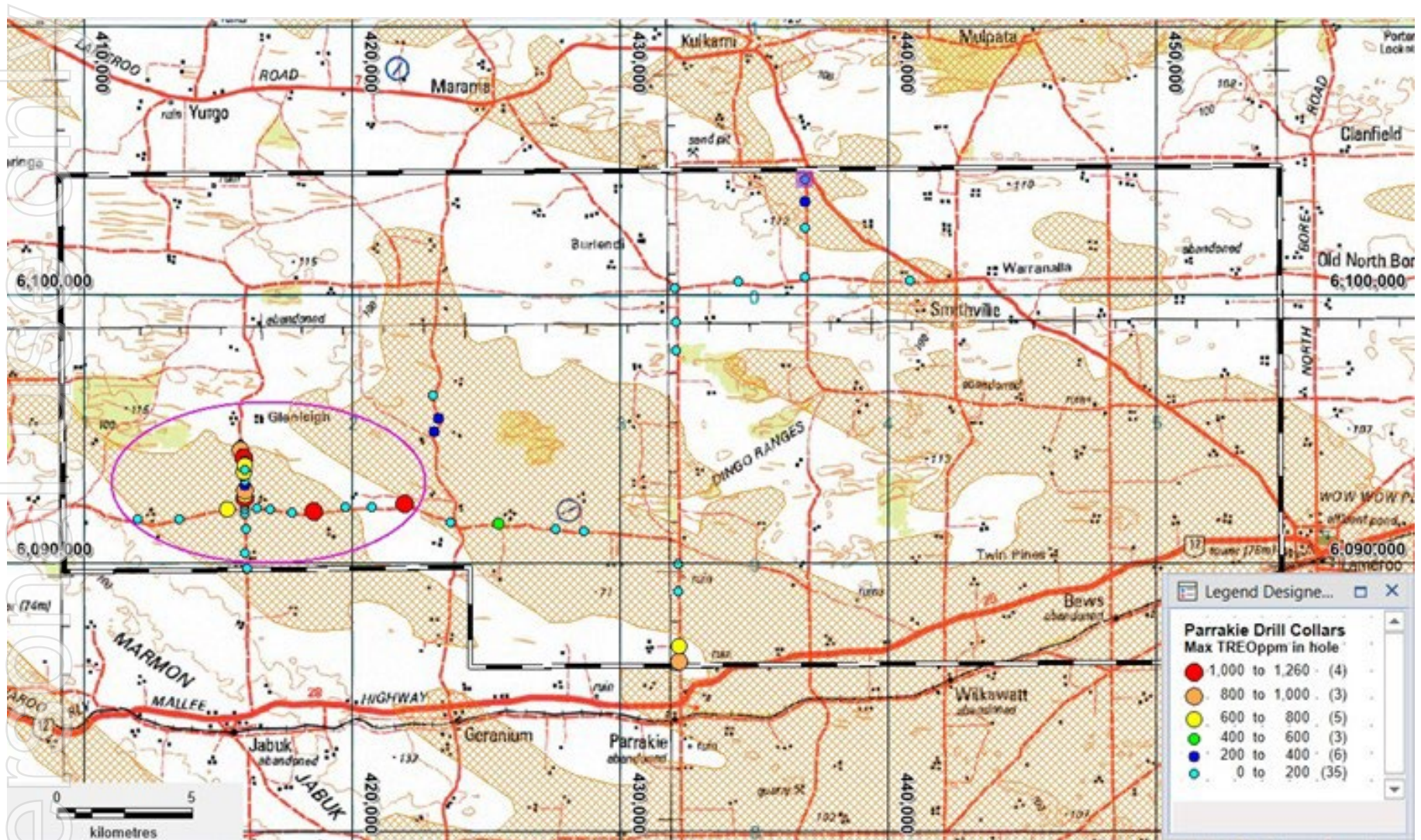
SA Parrakie Phase 1 drilling





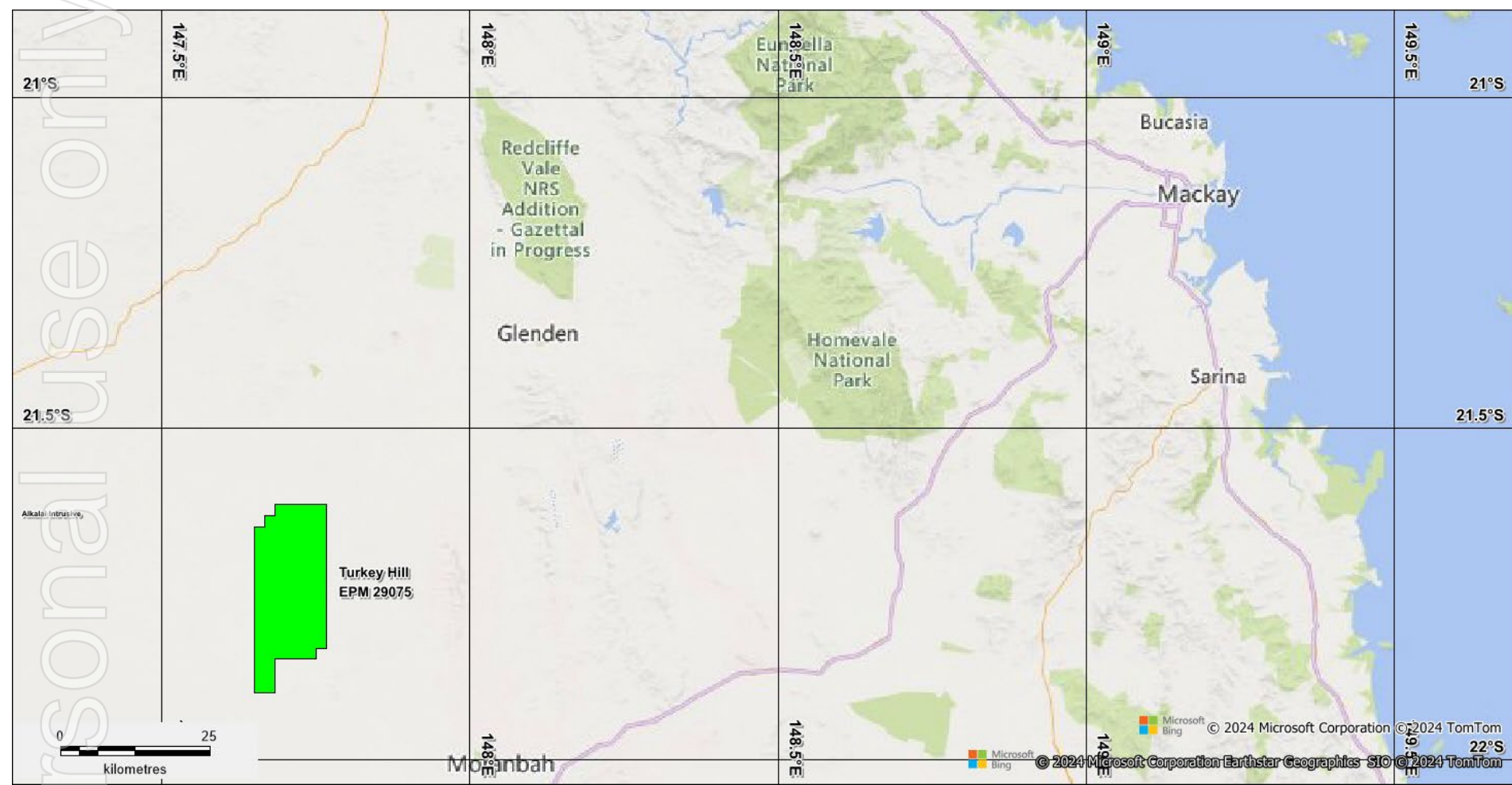
AUSMON RESOURCES
LIMITED

SA Parrakie Phase 2 Drilling





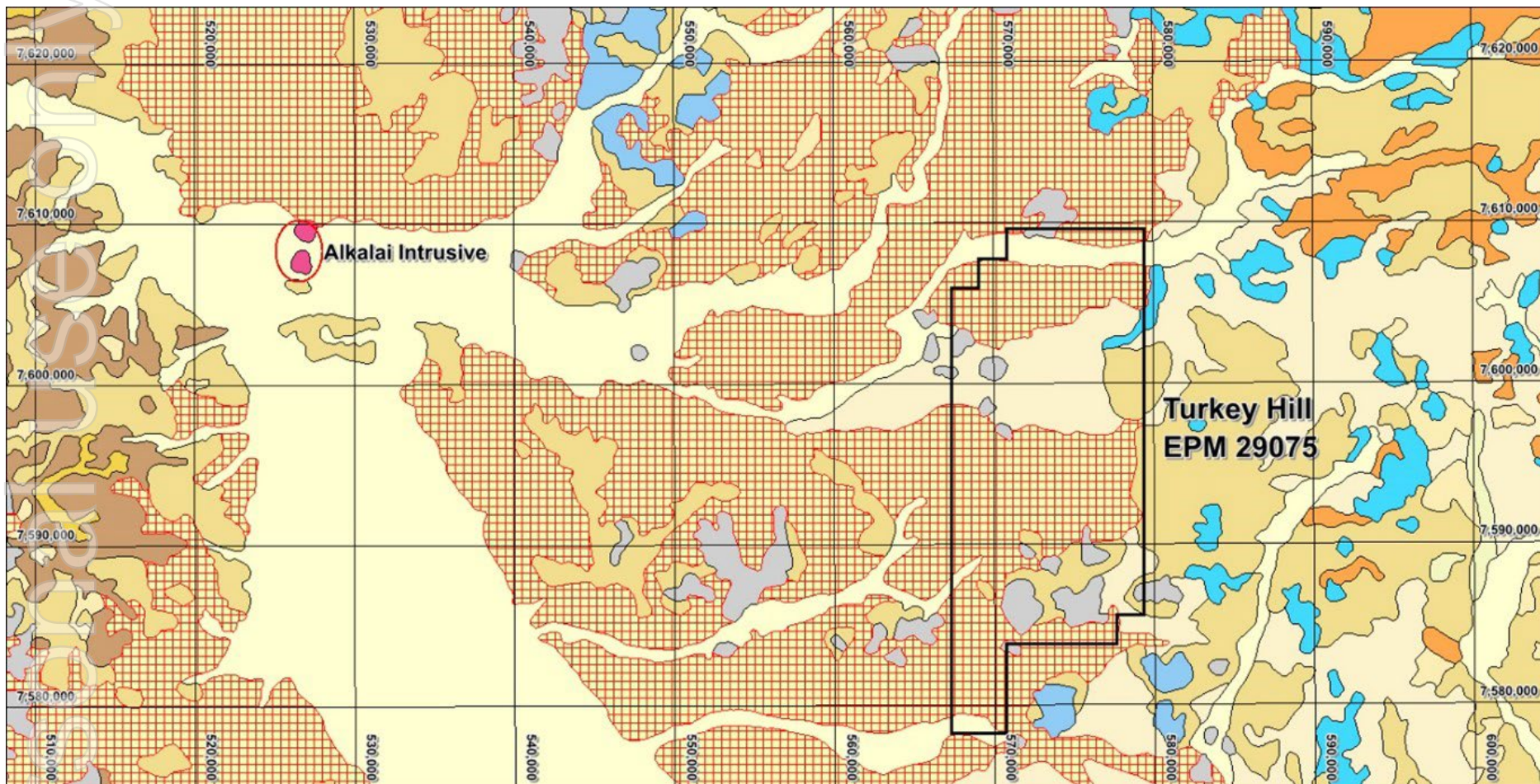
QLD Turkey Hill Tenement





AUSMON RESOURCES
LIMITED

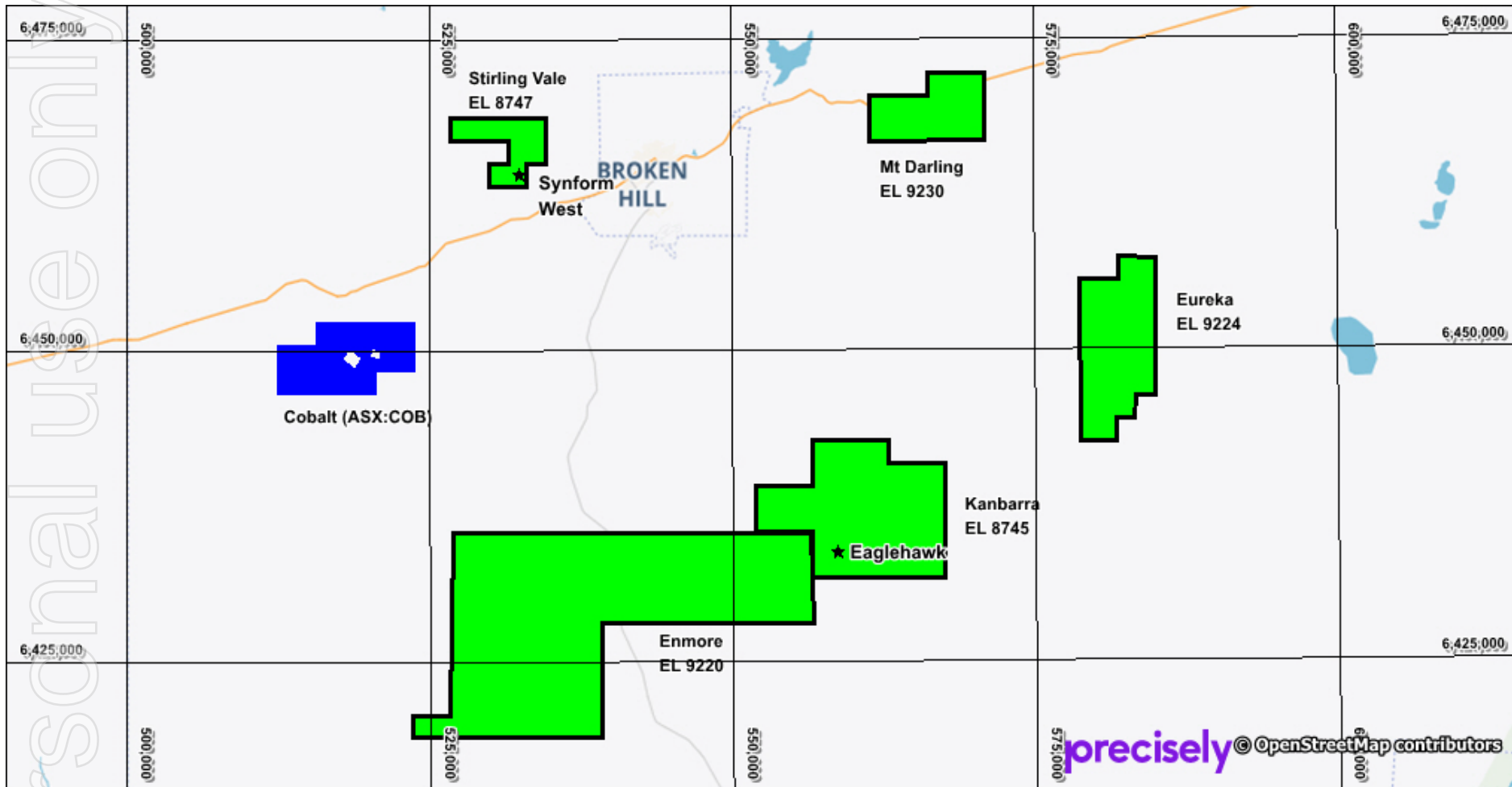
QLD Turkey Hill - Geology



Gold and Base Metals Exploration Broken Hill Tenements NSW



AUSMON RESOURCES
LIMITED



Gold and Base Metals Exploration



AUSMON RESOURCES
LIMITED

Enmore/Eureka/Mt Darling – Broken Hill - New South Wales

- Two RC drillholes program at Enmore for the East Borehole IP/Geochemistry target.
 - Due to drilling difficulties hole EBRC001 did not reach target depth of 275m. Completed at 192.
 - Hole EBRC002 (325m) was not commenced.
 - Drilling program reviewed for resumption in 2025.
- No field-based exploration at Eureka and Mt Darling.

Kanbarra/Stirling Vale – Broken Hill - New South Wales

- Detailed evaluation of all exploration to date for next phase of exploration.

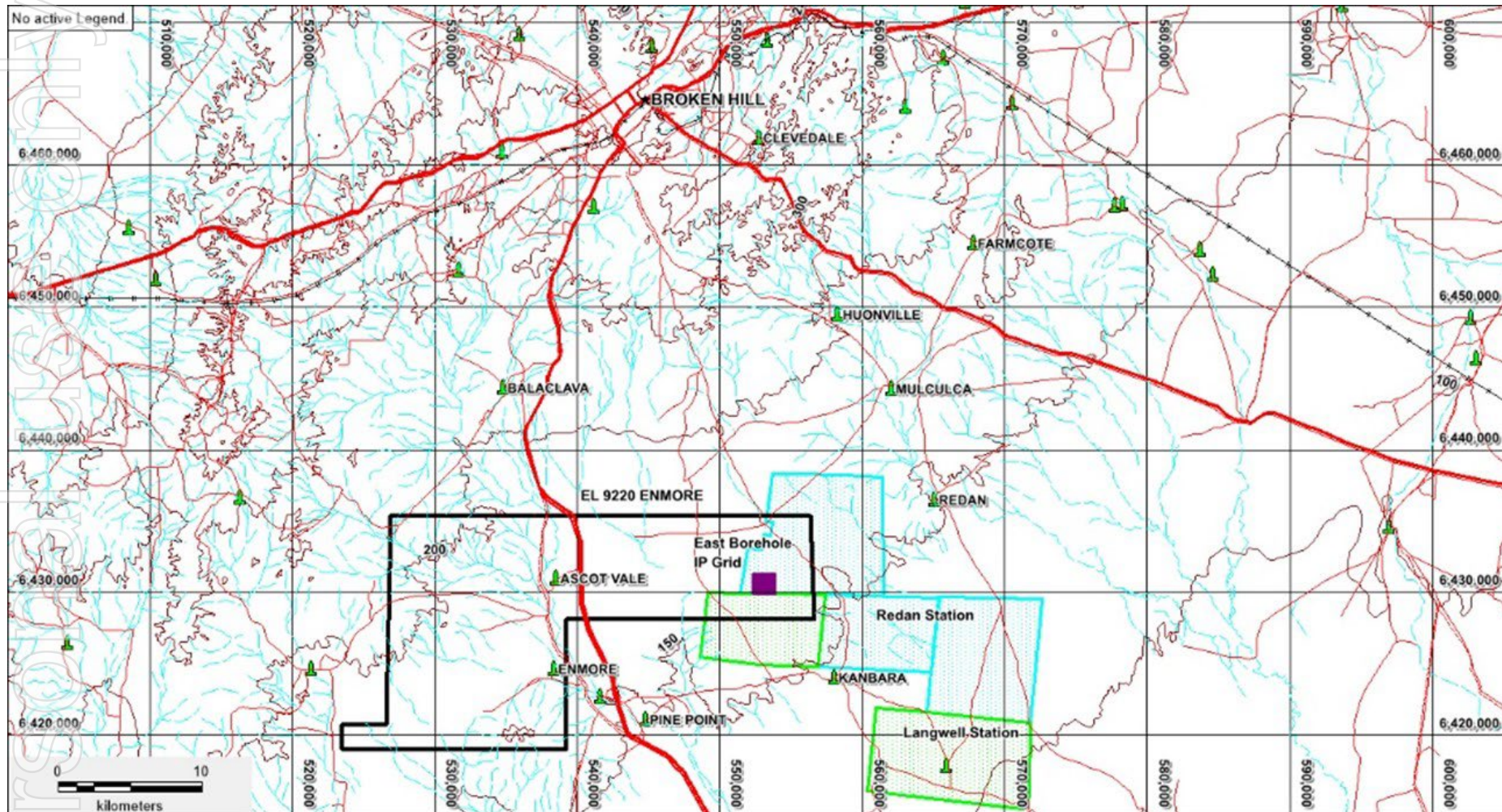
Brungle Creek/McAlpine – Tumut - New South Wales

- Exploration focus shifted from Co, Cr and Cu to Au
- Two Au trends in the NW and SE of the tenements to be explored via geological mapping and surface geochemical exploration.
- No field-based exploration in 2024 as strategy going forward being developed.

EL 9220 Enmore IP Grid and RC drilling



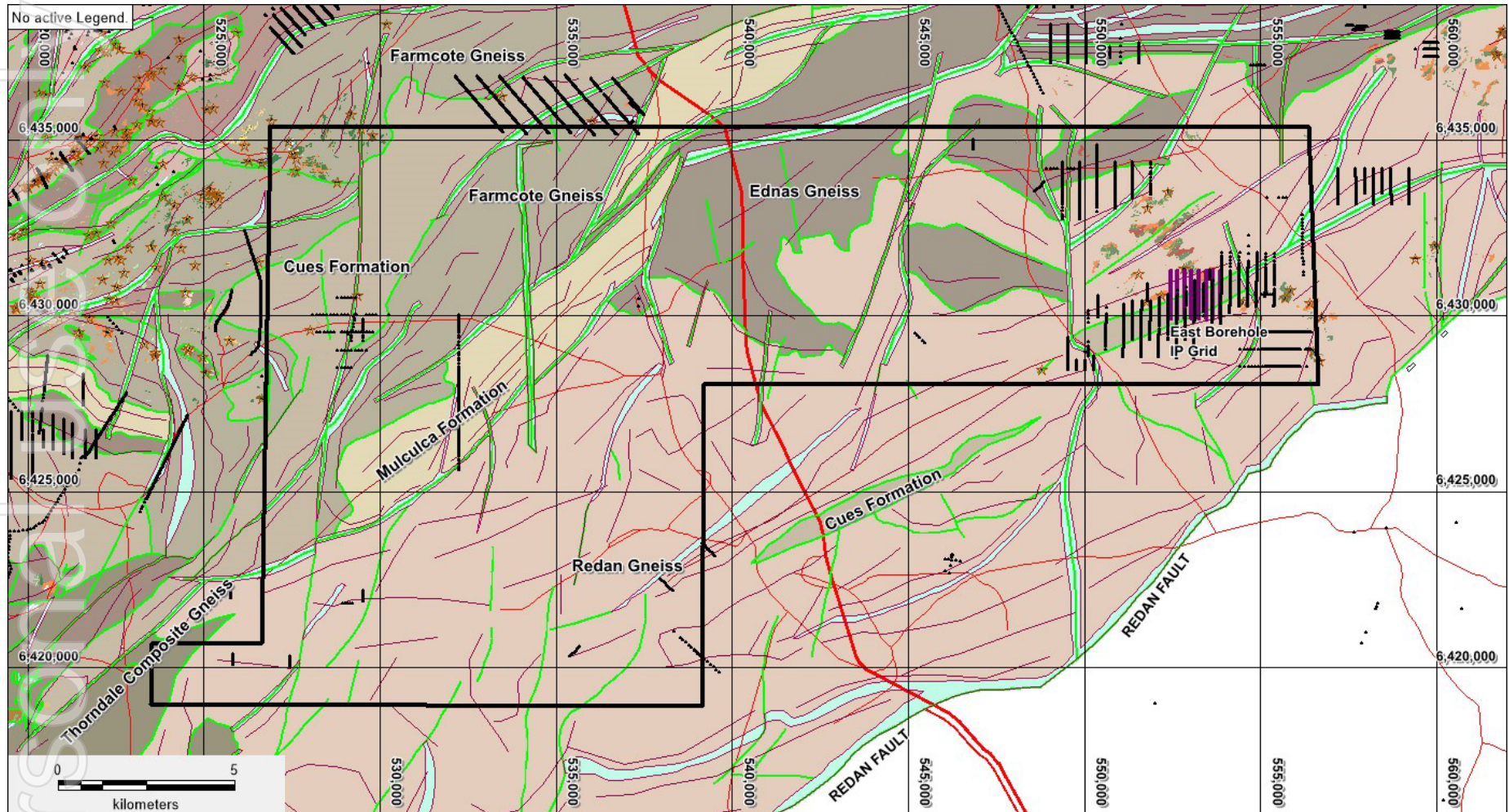
AUSMON RESOURCES
LIMITED



EL 9220 Enmore Interpreted Geology



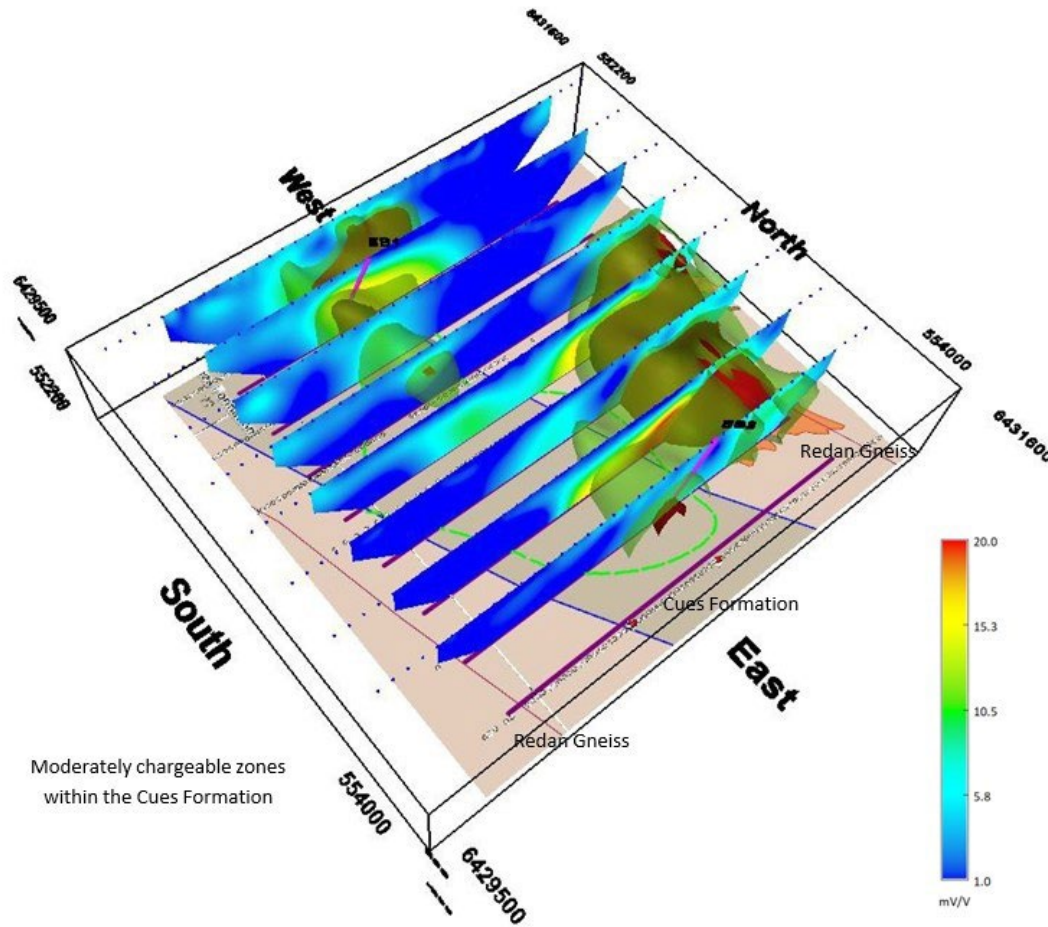
AUSMON RESOURCES
LIMITED



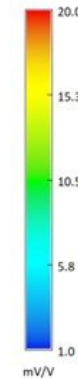
EL 9220 Enmore 3D IP Model



AUSMON RESOURCES
LIMITED



Moderately chargeable zones
within the Cues Formation

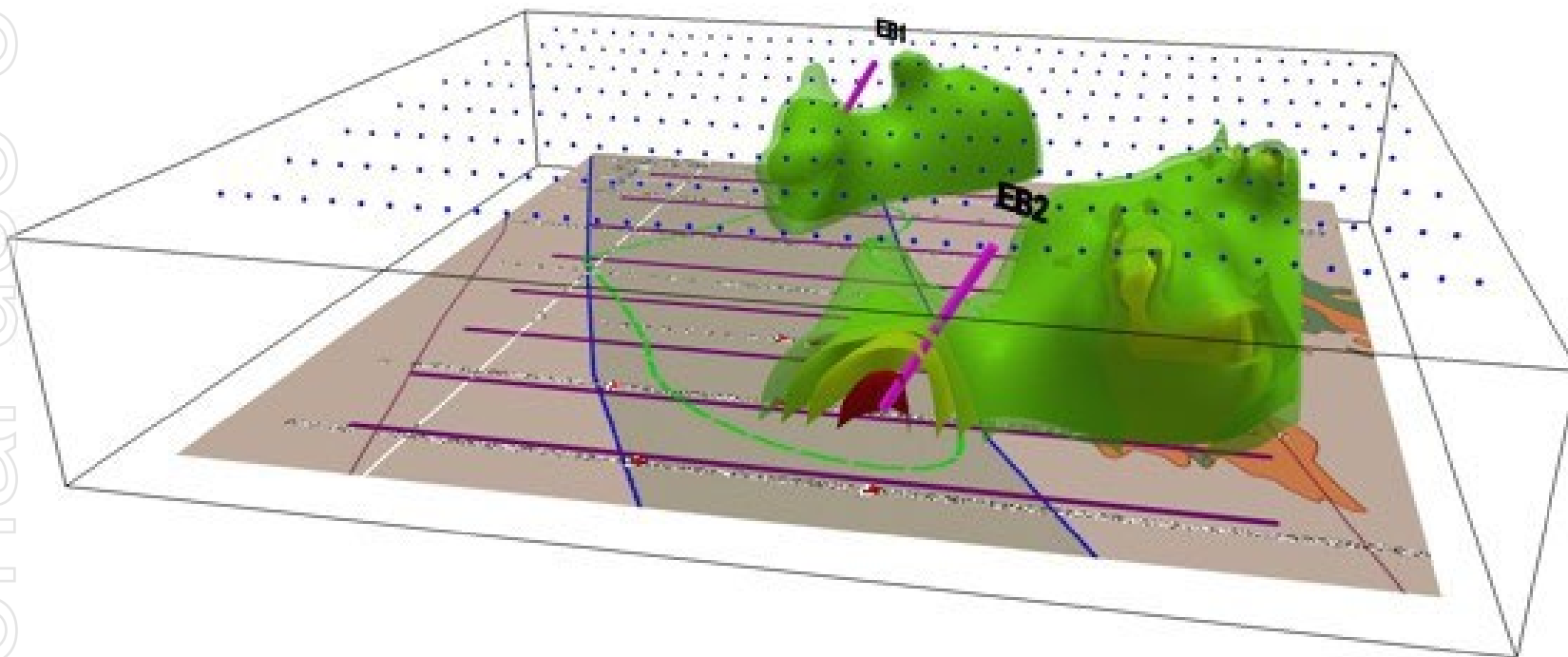


ersonal use only

EL 9220 Enmore 3D IP Model



AUSMON RESOURCES
LIMITED

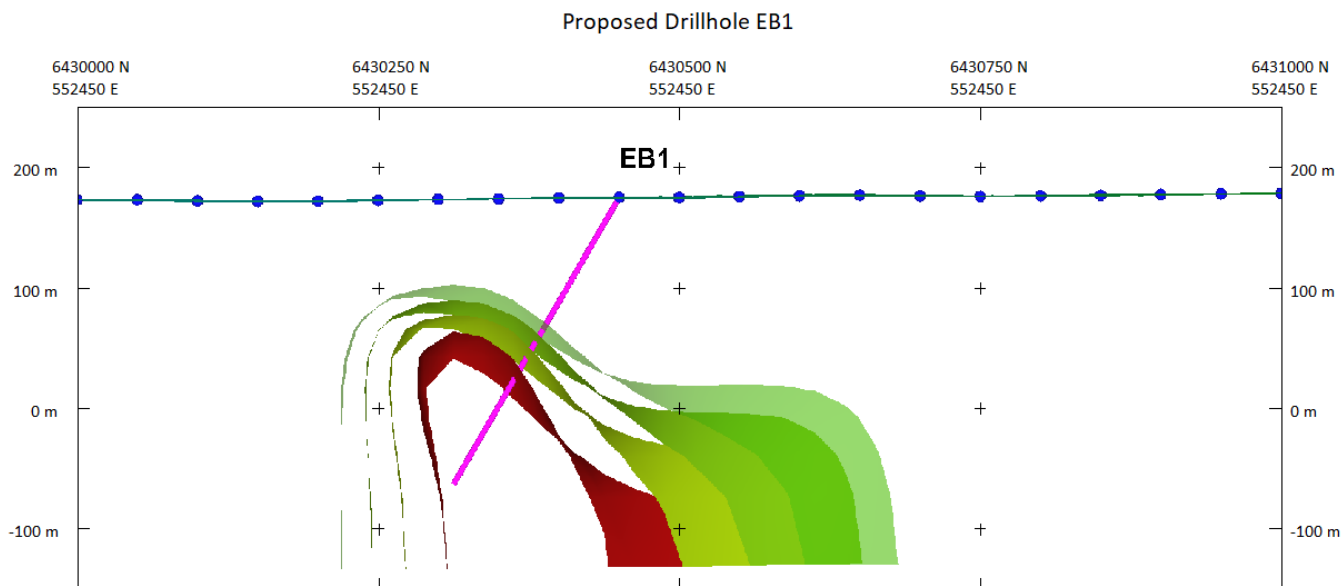


ersonal use only

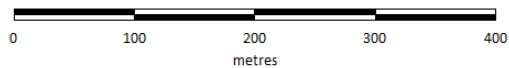
EL 9220 Enmore 3D IP Model Cross Section



AUSMON RESOURCES
LIMITED



Scale 1: 5 000



Ausmon Resources Ltd

East Borehole Prospect

Section 552450E
Proposed Drillhole EB1
Inverted Chargeability Shells (7 to 10 mV/V)

EL 9220 Enmore RC Drill Site EBRC001



AUSMON RESOURCES
LIMITED

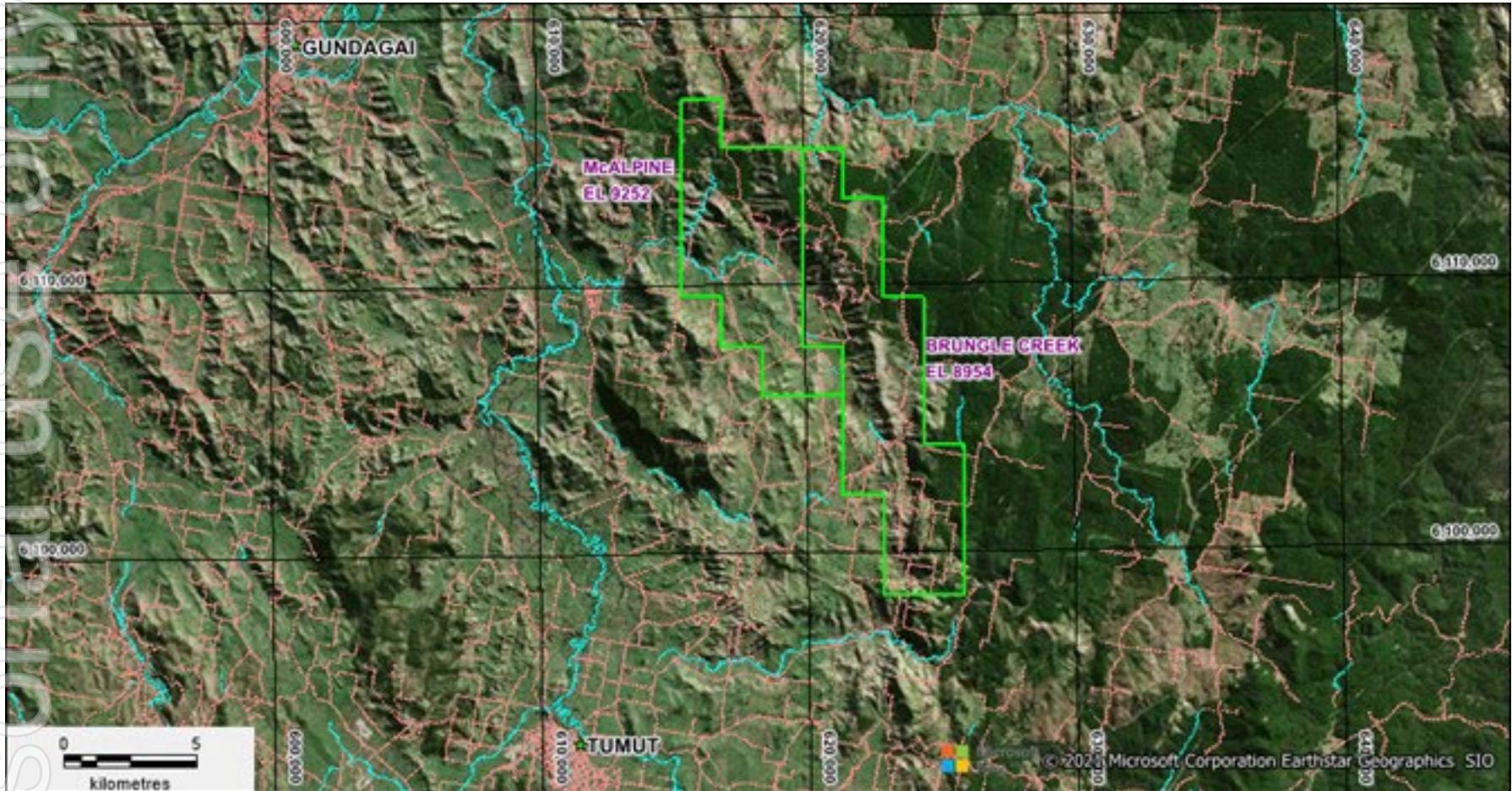
ersonal use only



Tumut Tenements NSW



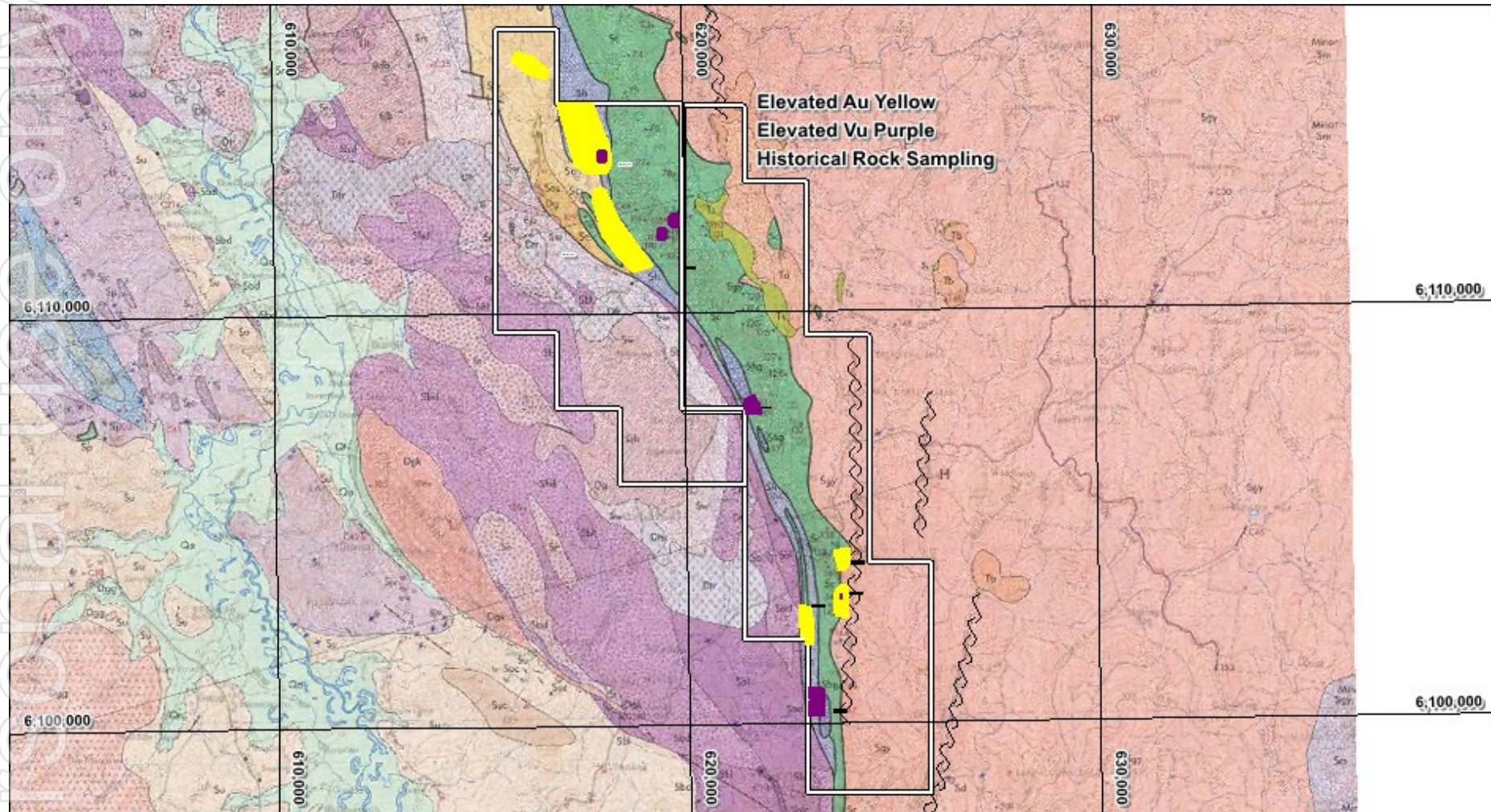
AUSMON RESOURCES
LIMITED





AUSMON RESOURCES
LIMITED

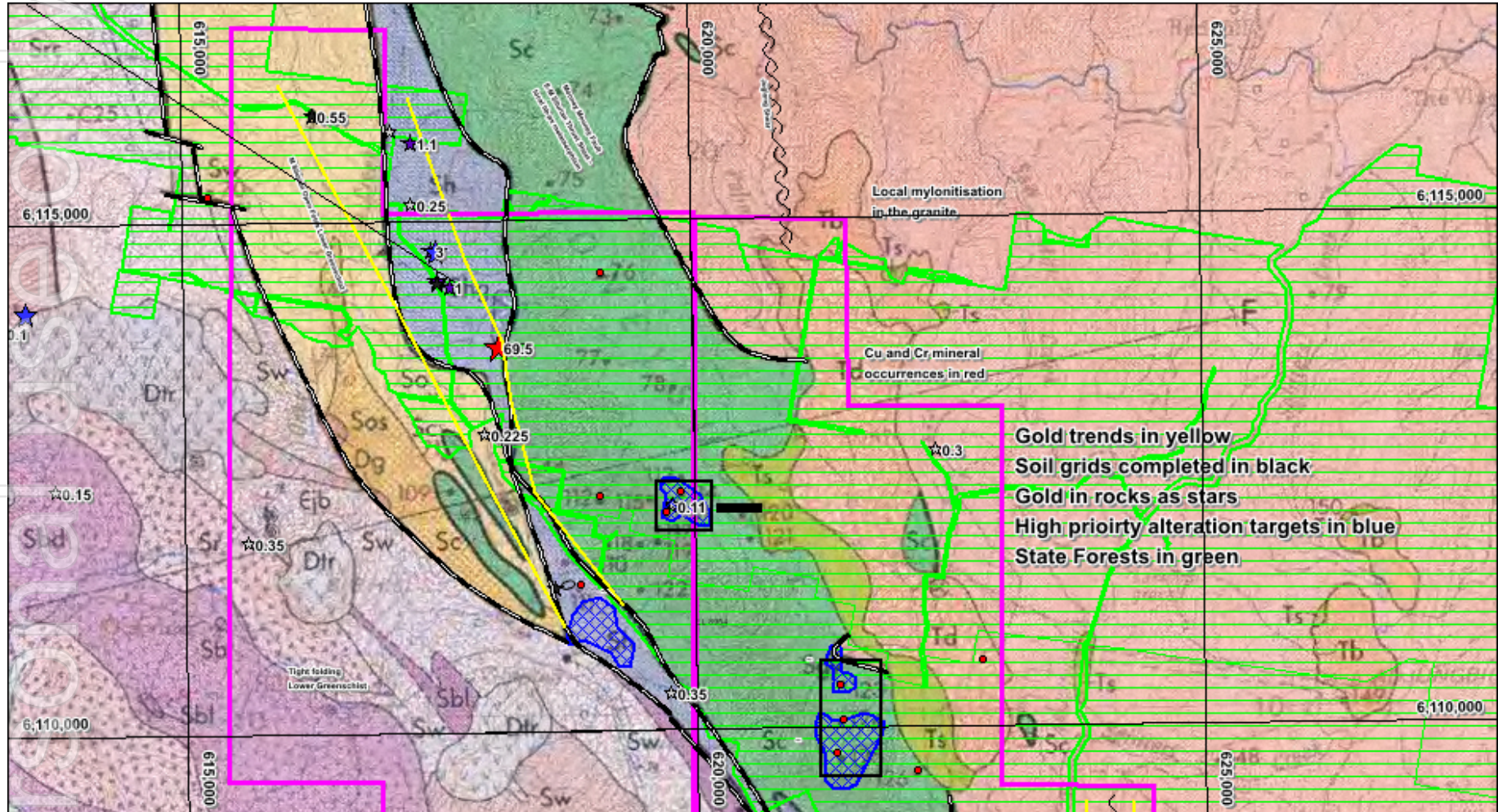
Tumut Gold Exploration Targets - NSW



Tumut Gold Exploration Target NW



AUSMON RESOURCES LIMITED



Tumut Gold Exploration Target SE



AUSMON RESOURCES LIMITED

