

7th November 2024

ASX Market Announcements

PRESENTATION ON OPERATIONS

We attach a power point presentation for investors.

Competent Person Statement

The information in the attached presentation that relates to Exploration Results, Exploration Targets and Mineral Resources is based on information compiled by Mr Mark Derriman, who is the Company's Consultant Geologist and a member of The Australian Institute of Geoscientists (1566). Mr Mark Derriman has sufficient experience that is relevant to the style of mineralization and type of deposit under consideration and to the activities which he is undertaking to qualify as a Competent Person as defined in the 2012 Edition of the Australasian Code for Reporting of Exploration Results, Exploration Targets, Mineral Resources and Ore Reserves. Mr Mark Derriman consents to the inclusion in this report of matters based on his information in the form and context in which it appears.

Forward-Looking Statement

This document may include forward-looking statements. Forward-looking statements include, but are not limited to, statements concerning planned exploration program and other statements that are not historical facts. When used in this document, the words such as "could", "plan", "estimate", "expect", "intend", "may", "potential", "should" and similar expressions are forward-looking statements. Although Kaili Resources Limited believes that its expectations reflected in these forward-looking statements are reasonable, such statements involve risks and uncertainties and no assurance can be given that actual results will be consistent with these forward-looking statements.

In accordance with Listing Rule 5.23 the Company reports that it is not aware of any new information or data that materially affects the information included in the presentation.

Authorised by.

Long Zhao
Director/Company Secretary
Contact

T: +61 2 9264 6288 E : contact@kailigroup.com.au



KAILI RESOURCES LIMITED Operations Update

Aircore Drilling at Lameroo -2024



RC Drilling at Holey Dam - 2023



7 November 2024

Disclaimer



Certain statements contained in this presentation, including information as to the future financial or operating performance of Kaili Resources Limited and its projects, are forward-looking statements. Such forward looking statements:

- Are necessarily based upon a number of assumptions and estimates that, while considered reasonable by Kaili Resources Limited, are inherently subject to significant technical, business, economic, competitive, political and social uncertainties and contingencies;
- Involve known and unknown risks and uncertainties that could cause actual events or results to differ materially from estimated or anticipated events or results reflected in such forward-looking statements; and
- May include, among other things, statements regarding targets, estimates and assumptions in respect of production, prices, operating costs, results, capital expenditures, reserves and resources, and are or may be based on assumptions and estimates related to future technical, economic, market, political, social and other conditions.

Kaili Resources Limited disclaims any intent or obligation to update publicly any forward-looking statements, whether as a result of new information, future events or otherwise.

All forward-looking statements made in this presentation are qualified by the foregoing cautionary statements. Investors are cautioned that forward-looking statements are not guarantees of future performance and accordingly investors are cautioned not to rely on forward-looking statements due to the inherent uncertainty therein.

The information in this presentation relates to exploration results and is based on information compiled by Mr Mark Derriman, Member of the Australasian Institute of Geoscientist. Mr Derriman has sufficient experience that is relevant to the style of mineralisation and type of deposits under consideration and to the activities which he is undertaking to qualify as a Competent Person as defined in the 2012 Edition of the JORC Australasian Code for Reporting of Exploration Results, Mineral Resources and Ore Reserves.

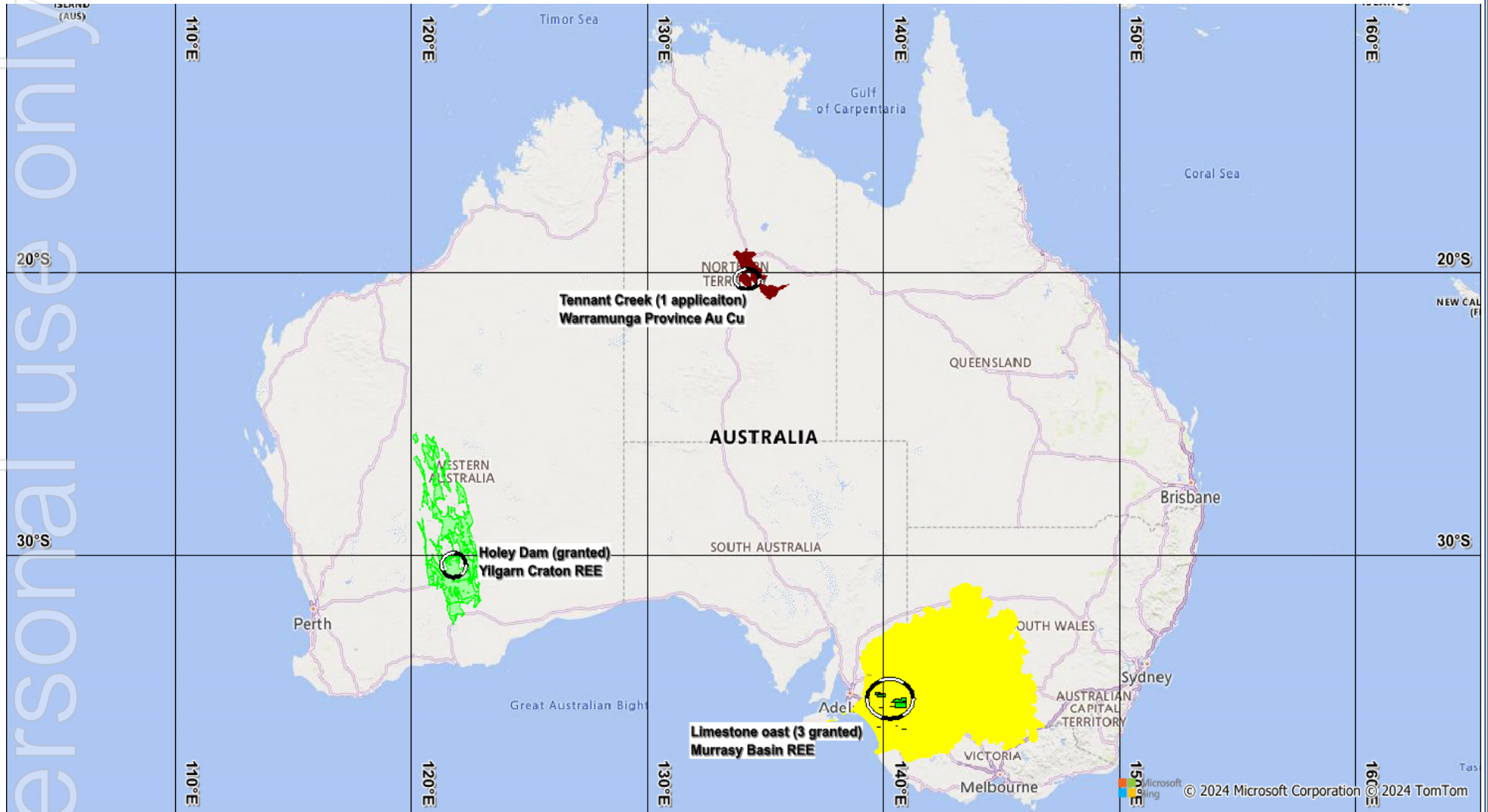
Business Objectives

- ❖ **MINERAL EXPLORATION TO PROVE RESOURCES FOR EVENTUAL MINING IN AUSTRALIA**
- ❖ **ACQUIRE MINING DEVELOPMENT IN AUSTRALIA FOR EARLY GROWTH**

Current exploration projects in Australia are:

- Yilgarn Craton: Holey Dam- Rare Earth Elements
- Warramunga Province: Tennant Creek – Gold Copper (Application)
- Murray Basin: Limestone Coast – Rare Earth Elements

KAILI RESOURCES PROJECT LOCATIONS

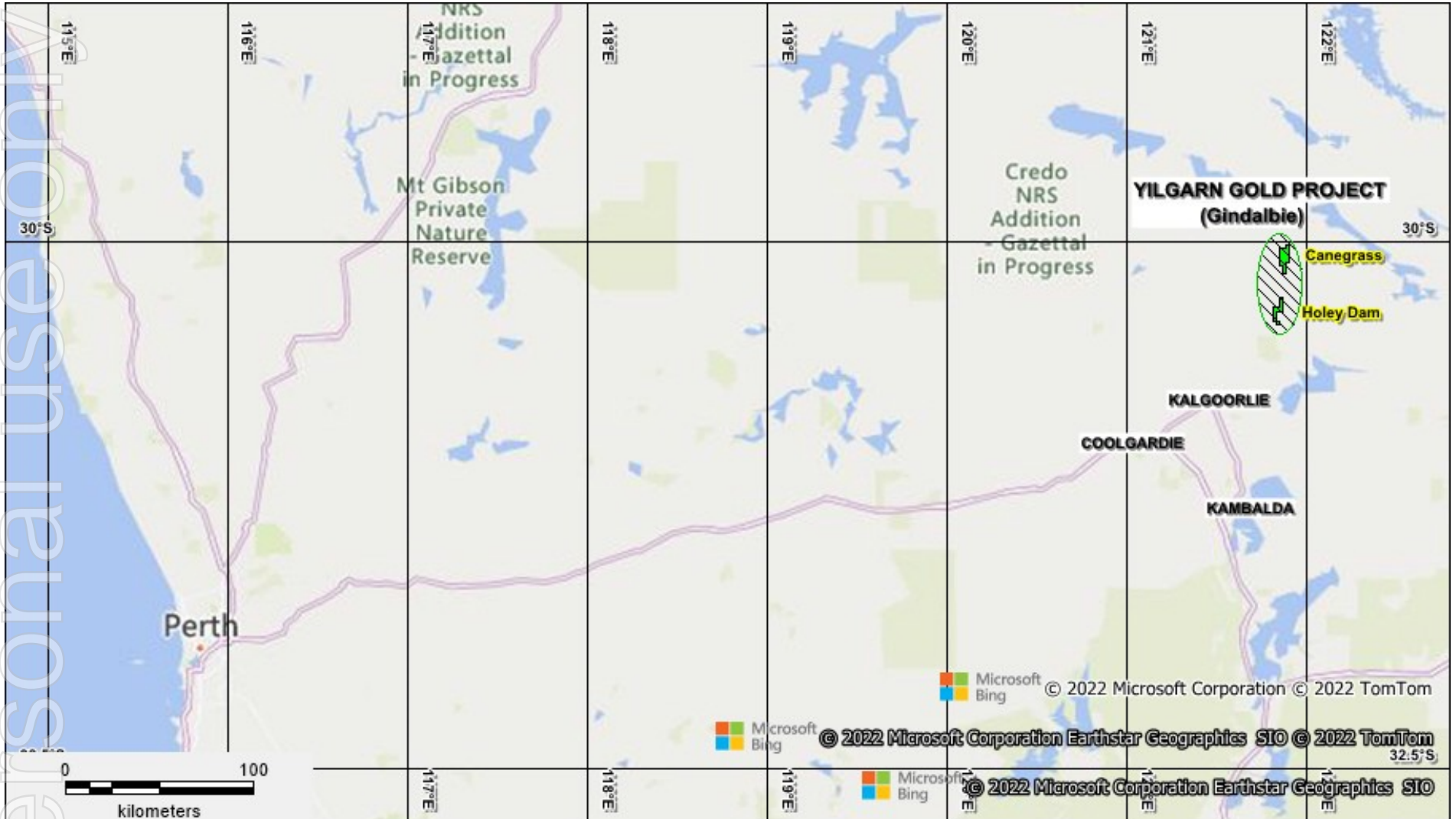


KAILI RESOURCES TENEMENT REGISTER



Date of Grant	Tenement Number	Tenement Name	Minerals Target	Location	Beneficial Holding	Area Km ²	Status
1/07/2016	E27/550	Holey Dam	Rare Earth	WA - Yilgarn Craton	100%	26.6	Expiry on 30/06/2026
19/10/2022	EL6856	Lameroo	Rare Earth	SA - Murray Basin	100%	991	Expiry on 18/10/2028
15/02/2024	EL 6977	Karte	Rare Earth	SA - Murray Basin	100%	590	Expiry on 14/02/2030
15/02/2024	EL 6978	Coodalya	Rare Earth	SA - Murray Basin	100%	408	Expiry on 14/02/2030
Under application	ELA32666	Kovacs	Gold/Base Metals	NT-Warramunga Province	100%	271.7	Application submitted 23/02/2021
					Total	2,287.30	

WA - GINDALBIE PROJECT LOCATION



WA - Holey Dam E27/550

(Canegrass Tenement Relinquished in October 2024)

WA - Gindalbie REE Project

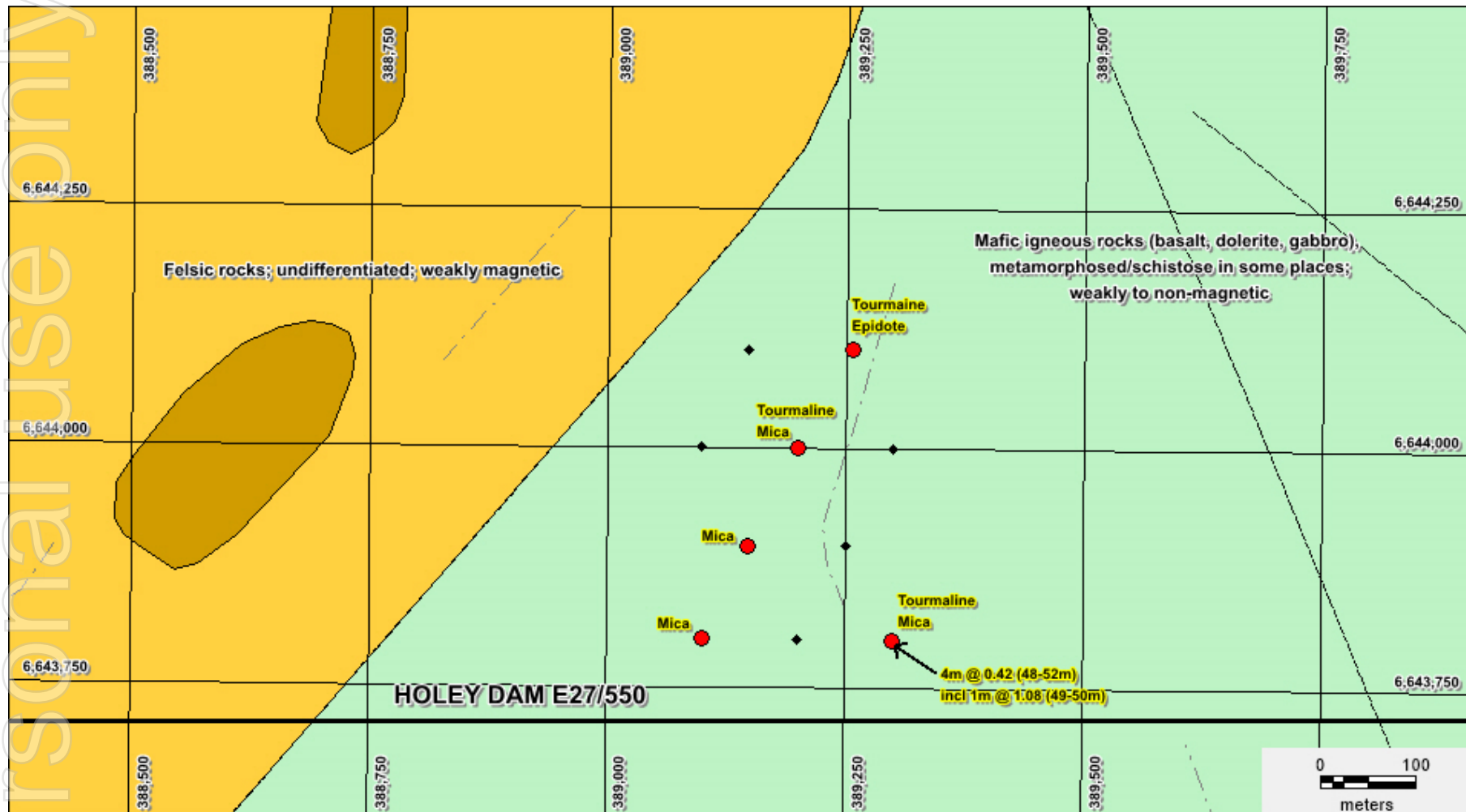
KEY ELEMENTS

- The Yilgarn Craton of Western Australia contains several gold and nickel producing mines
- 65 km north of Kalgoorlie, famous gold production region with current multimillion ounce productions from several mining operations
- Region has large skilled workforce and excellent infrastructure
- Landowners supportive and Native Title agreements in place.
- The drilling results received in November 2023 (*see ASX Announcement of 20 November 2023*) of the single metre intervals re-sampling for Holey Dam are on the next slide

KEY ELEMENTS

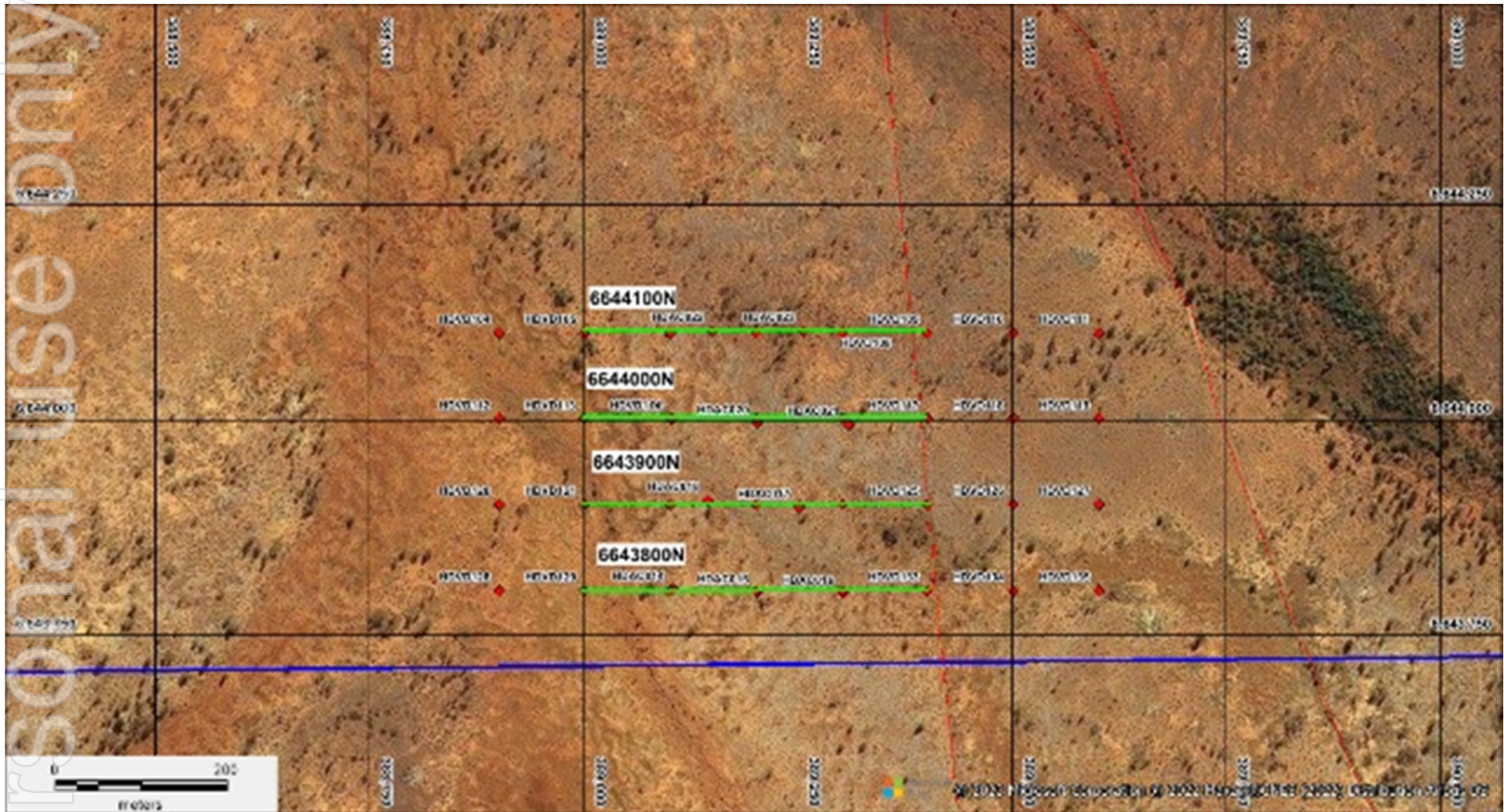
- HDRC001: 4 m @ 546 ppm TREO from 24 m - 28 m and 6 m @ 641 ppm TREO from 52 m - 58 m including 1 m @ 866 ppm from 54 m - 55 m.
- HDRC002: 1 m @ 586 ppm TREO from 20 m - 21 m and 5 m 628 ppm TREO from 48 m to 54 m including 1 m @ 709 ppm TREO from 50 m - 51 m and 1 m @ 850 ppm TREO from 53 m - 54 m.
- High value Battery Metal Elements Pr, Nd, Dy and TB constitute between 20% and 30% of the individual sample assays.

WA - HOLEY DAM AIRCORE DRILLING



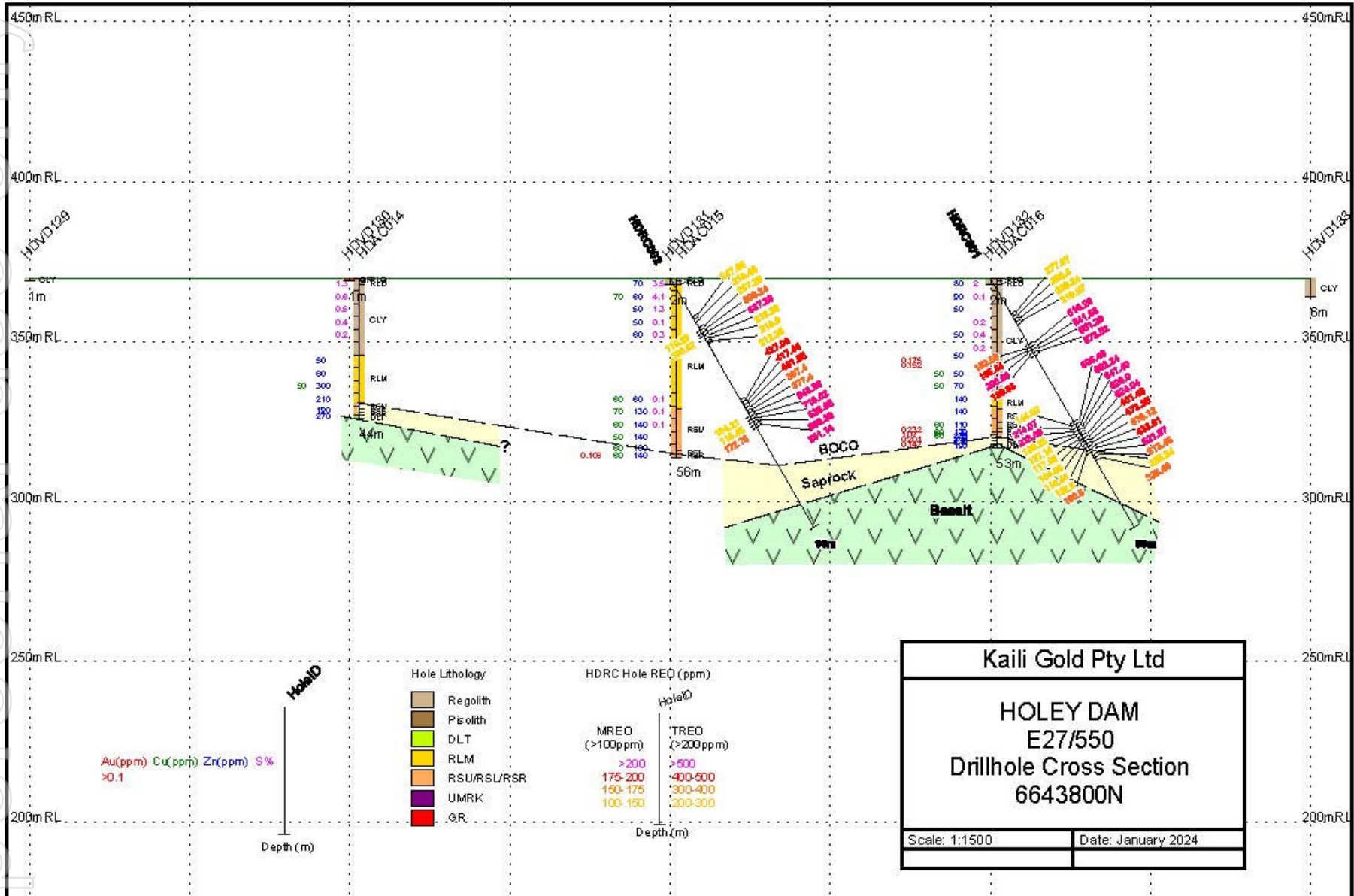
2023 Aircore drilling with anomalous gold and mica/tourmaline from spectral mineralogical analyses

WA - HOLEY DAM DRILLING



Elevated REE in RC Drilling Line 6643800N – No REE exploitation to the north

WA - HOLEY DAM REE CROSS SECTION



WA - Holey Dam Future Plans

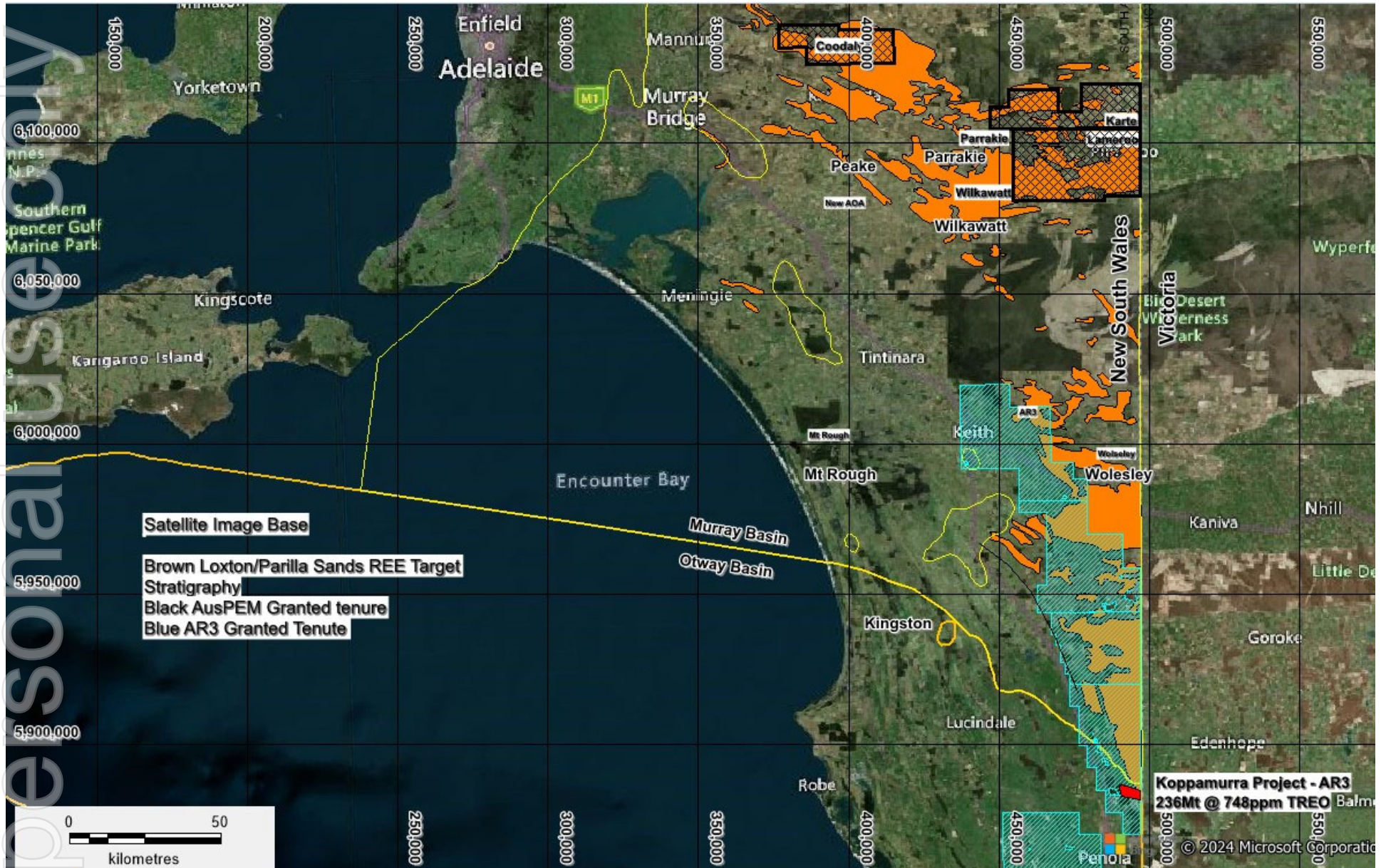
KEY ELEMENTS

- Re-analyse historic gold drilling for Rare Earth Elements (REE) – samples currently at the ALS Lab in Perth.
- Aircore drilling traverses to the north of the section in slide 9 with samples submitted for the full suite of REE.
- Broader spaced soil sampling utilising pXRF for near surface REE mineralisation.
- Spectral studies of selected samples to determine the specific clay mineral that may be hosting the REE mineralisation.
- Infill Aircore drilling as required

- The aim is to explore for REE contained within the fine clay fraction of Tertiary (65 to 2.5 Million Years Ago) Strandlines (“ionic clay style of deposit) reportedly existing in the region.
- The Company’s 3 tenements are in very prospective locations for REE covering 1,989 km².
- Australian Rare Earth (ASX:AR3) has large exploration areas in the region and recently announced following drilling programs JORC inferred mineral resource of 236 MT @ 784 ppm TREO (Total Rare Earth Oxides) at their Koppamurra project prospective for ionic clay REE deposit (*see AR3’s ASX announcement of 30 September 2024*).
- REE have been designated critical minerals by Australia, EU, USGS and IEA and are used in rare earth permanent magnets for electric vehicles (EV), wind turbines and many electronic devices.

WA - LIMESTONE COAST PROJECT

Location of tenements Lameroo, Karte and Coodal



2025 Proposed Broad Exploration Plan:

- Review of all historic drilling across the tenements.
- Field visit to locate possible drill sites for road verge drilling.
- Presentation to the district councils and community as required.
- pXRF sampling of historic drilling.
- Lodge EPEPR for drilling approval by Department of Energy and Mining.
- Aircore drilling across the prospective Murray Basin for REE mineralisation based on results from above operations.

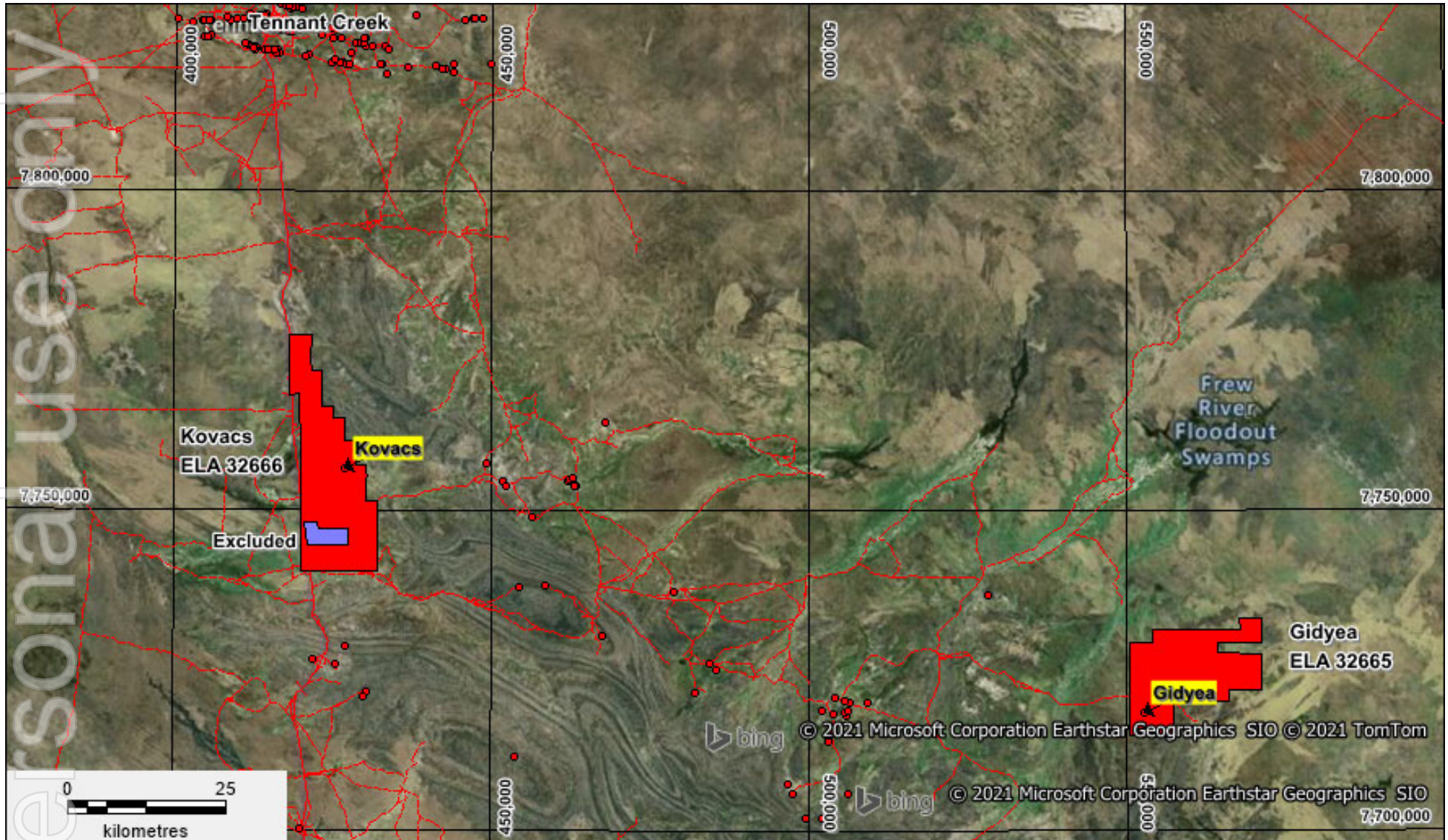
NT - TENNANT CREEK

COPPER, GOLD and COBALT PROJECT (Kovacs tenement under application)



- Located in Gold mineralised Warramunga Province Region of the Northern Territory.
- Between 75 km and 180 km South of Tennant Creek.
- Since 1932 the Tennant Creek Goldfield has produced 5M ounces (156 tonnes) of gold and 345,000 t of copper.
- The most significant mineralisation is associated with ironstone and vein quartz in Warramunga Sediments.
- There is a gold occurrence within the Kovacs tenement that has had a small amount of gold prospecting.

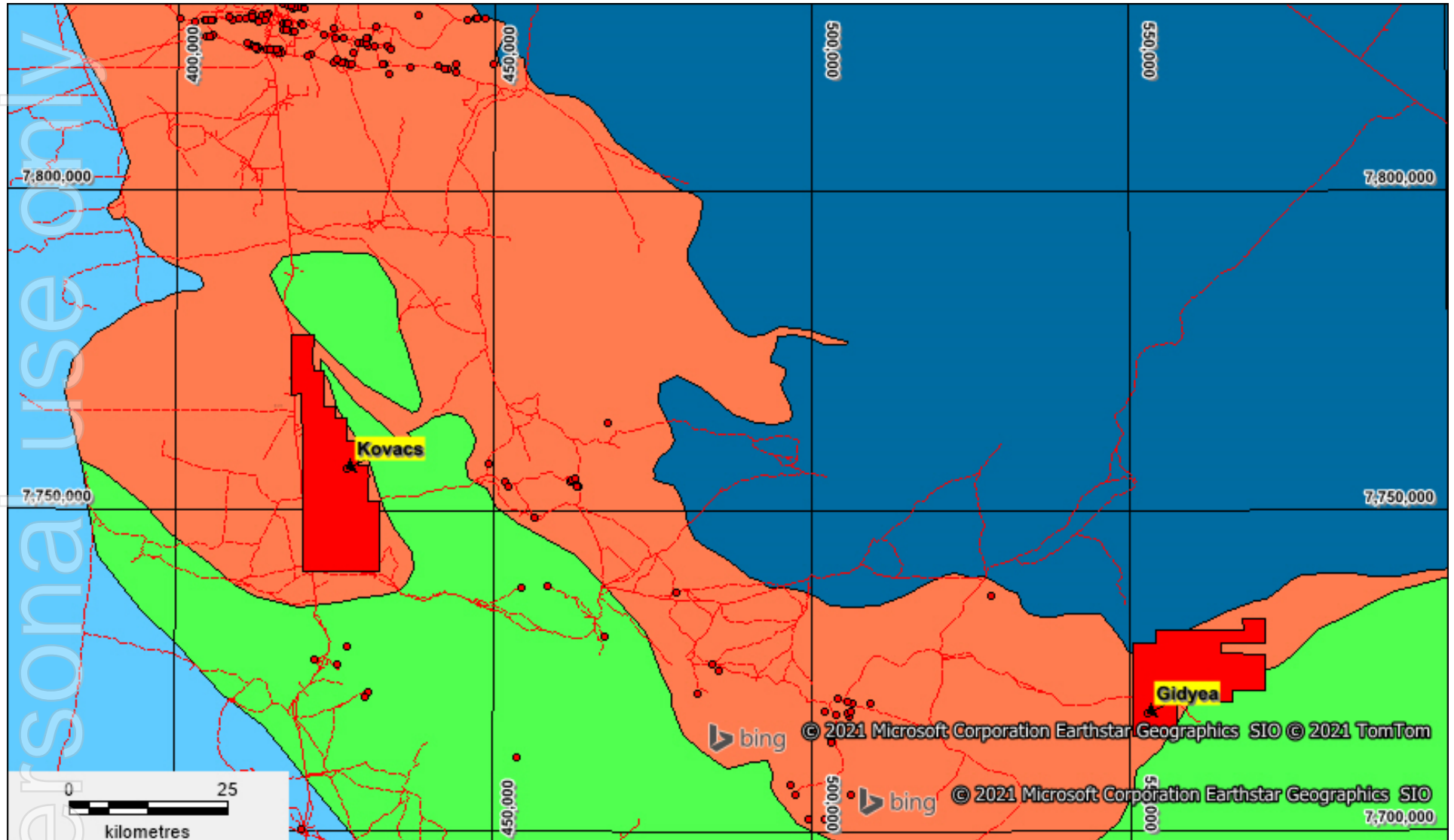
WA - TENNANT CREEK PROJECT LOCATION



ELA 32666 Kovacs

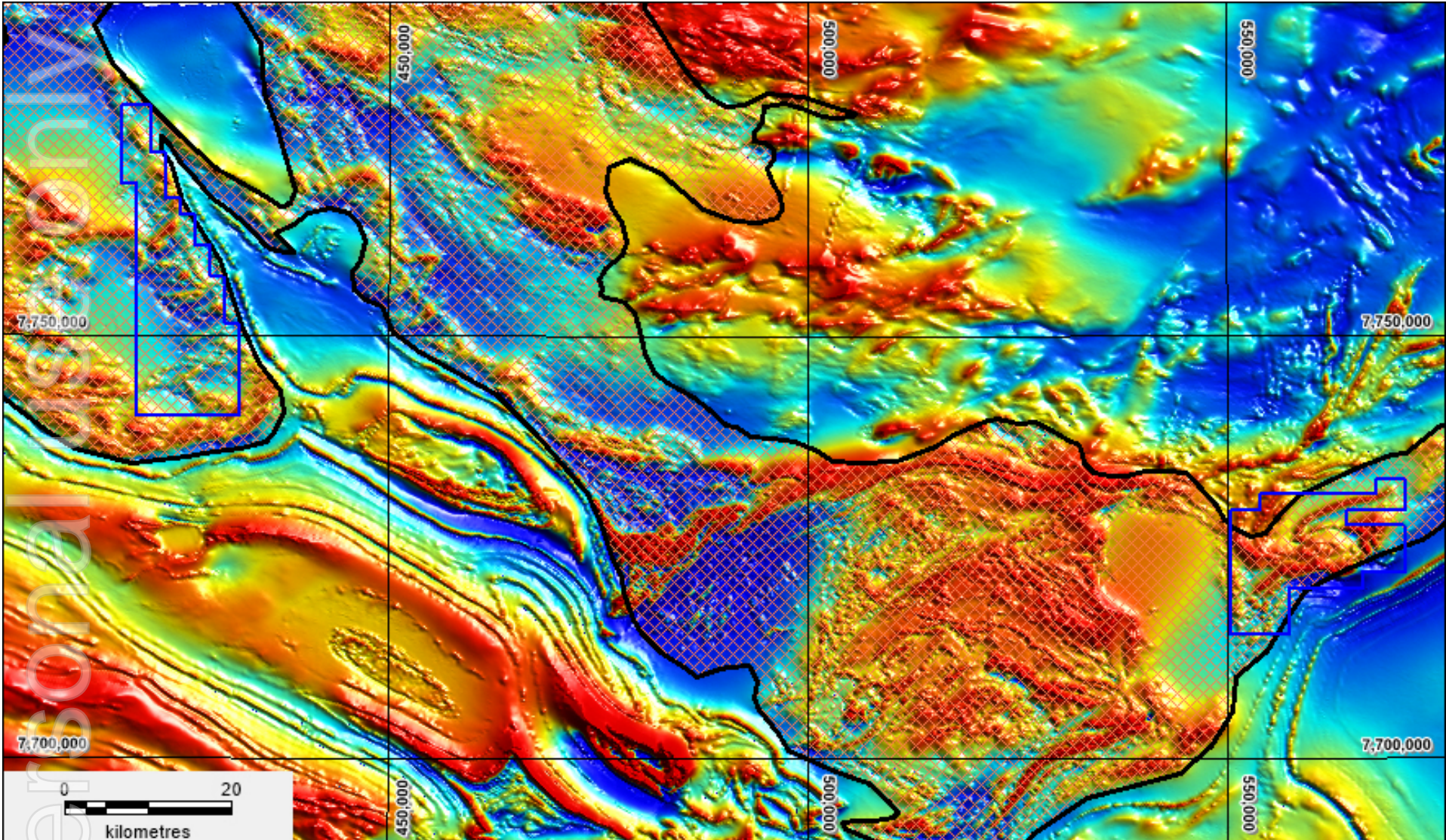
EL Gidyea has been relinquished

WA - TENNANT CREEK INTERPRETED GEOLOGY KAILI



Warramunga Province in Orange and Mineral occurrences as red dots

WA - TENNANT CREEK MAGNETICS



Magnetic Image showing the project and the Warramunga Province hatched

2025 Proposed Broad Exploration Plan (subject to grant of Kovacs):

- Ground magnetics and gravity survey across the tenement.
- Geological and Regolith Mapping.
- Fine fraction soil sampling in selected areas in addition to rock sampling.
- Shallow Aircore/RC drilling in high priority areas as defined from the exploration outlined above.