



# Quarterly Activities Report

For the three months ended  
30 September 2024

For personal use only

### *Directors*

Nicholas Mather B.Sc (Hons. Geology), MAusIMM  
Richard Ash BEc, CA  
Roland Sleeman B.Eng (Mech), MBA, GAICD  
Boyd White B.Bus, MBA

### *Company Secretary*

Elissa Hansen

### *Chief Executive Officer*

Roland Sleeman B.Eng (Mech), MBA, GAICD

### *Registered Office*

24-26 Kent Street  
Millers Point  
NSW, 2000

*Telephone:* (03) 9629 1566

### *Stock Exchange*

Australian Securities Exchange Limited  
Level 4, North Tower Rialto  
525 Collins Street  
Melbourne, Victoria 3000  
ASX code: LKO

### *Auditors*

William Buck  
Level 20  
181 William Street  
Melbourne, Victoria 3000

### *Share Registry*

Boardroom Pty Limited  
Level 8, 210 George Street  
Sydney NSW 2000

### *Address for Correspondence*

P.O. Box 300  
Collins Street West  
Victoria, 8007

*Email:* [lakes@lakesoil.com.au](mailto:lakes@lakesoil.com.au)

*Web site:* [www.lakesblueenergy.com.au](http://www.lakesblueenergy.com.au)

*Lakes Blue Energy NL is a no-liability company incorporated in Australia. Unless otherwise stated references to 'Lakes' or 'the Company' or 'the Group' refer to Lakes Blue Energy NL and its controlled entities as a whole. Lakes operates a web site which Directors encourage you to access for the most recent company information.*

## CORPORATE ACTIVITIES:

### Financial Summary

- During the Quarter, \$129k was expended on operating activities. There were no payments for exploration and evaluation in the quarter.
- Closing cash was \$74k.
- There were no payments made to Directors during the quarter. Executive and Independent Directors' fees are accruing.

### Rawson Oil & Gas Limited

- Lakes Blue Energy has continued to advance funds to Rawson Oil & Gas Limited as necessary for activities in South Australia and Papua New Guinea.

### Victorian Onshore Exploration

- The Company is progressing work toward securing approvals for drilling of conventional Wombat-5 well onshore in the Gippsland Basin.
- Documentation, to implement the sale to Armour Energy (Victoria) Pty Ltd (**AEV**) of the Company's 49% interest in Petroleum Exploration Permit 169 (**PEP 169**), was executed on 31 August 2024. The sale transaction was completed on 9 October 2024, after satisfaction of all preconditions for the sale, and the first \$3.0m of proceeds received. A further \$3.5m will be received when registration of transfer of the PEP 169 title is completed. The Company will also receive a royalty over future sales of petroleum produced from PEP 169. Details of the transaction documentation were announced on 3 September 2024.
- The pre-existing 12% royalty arrangement over PEP 169 was assigned from Lakes' subsidiary, Mirboo Ridge Pty Ltd, to AEV, as the new owner of PEP 169. Royalty payments, if any, are to be distributed by the royalty holder, Geothermal Energy Victoria Pty Ltd (**GEV**), to holders of units in the LKO Royalty Trust. GEV is Trustee of the Trust, and Lakes hold 1/6 of the units on issue.

### Victorian Rehabilitation Bonds

- The Company has determined that, to demonstrate the real costs of rehabilitation, it will be necessary to undertake a rehabilitation project(s). The Lou Yang-2 well, located within PEP 166, has been selected as a demonstration.
- A draft Operation Plan, for rehabilitation of the Lou Yang-2 well, was provided to DEECA on 22 April 2024.
- During the Quarter, DEECA provided feedback, outlining changes it requires to be made to the Operation Plan. The Company is attending to DEECA's requests and will resubmit the Operation Plan when requisite modifications are completed.

### Other

- The Company is repaying the grant originally received in respect of 2013/14 activities, including general interest charges to date and shortfall penalty assessment, at the rate of \$20,000 per month.
- During the Quarter, the potential dispute regarding the transfer to ADZ Energy Pty Ltd of Armour Energy (Victoria) Pty Ltd's (**AEV**) interest in PEP 169 was resolved as part of the sale to AEV of the Company's 49% interest in PEP 169.

## Corporate and Funding

- The Company has 58,757,575 fully paid Ordinary Shares on issue.
- Trading of the Company's shares remains in suspension at direction of the Australian Securities Exchange (**ASX**). With the sale to AEV of PEP 169 now complete, the Company intends to seek ASX approval for resumption of trading of its shares. A submission to the ASX is being prepared.
- Proceeds from the Company's announced sale to AEV of its 49% interest in PEP 169 will be utilised to meet ongoing corporate costs and to carry out work to secure approval for drilling of the Wombat-5 well, with the remaining balance utilised to part, or potentially fully, to fund the cost of drilling the well.

## EXPLORATION OPERATIONS:

The Company is managing a diverse portfolio of active exploration activity, details of which are provided below.

### Onshore Victoria

*PRL 2, Gippsland Basin (Lakes: Operator, 100% interest)*

*PEP 169, Otway Basin (Lakes: royalty interest only)*

*PEPs 163, 167 and 175, Otway Basin (Lakes: Operator, 100% interest)*

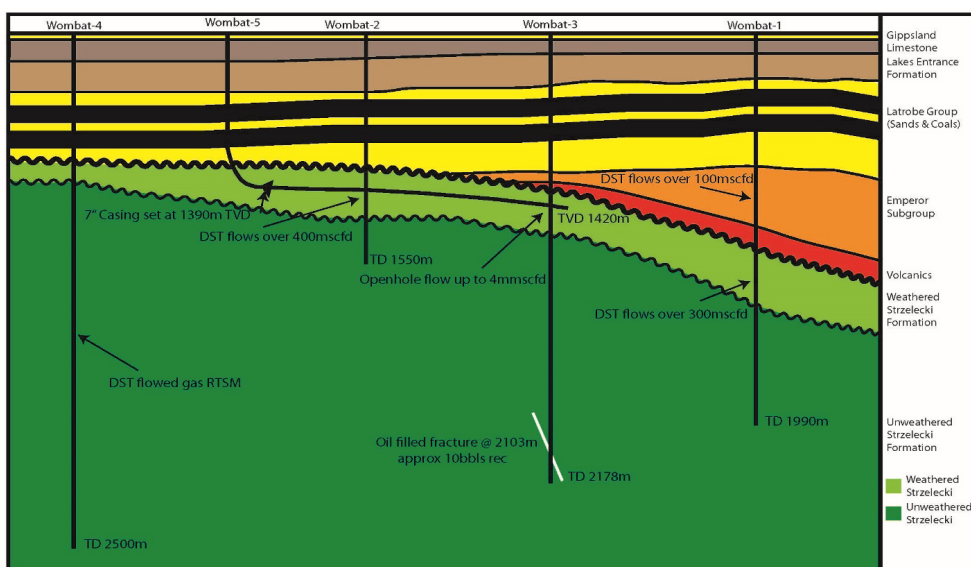
*PRL 3, Gippsland Basin (Lakes: Operator, 100% interest)*

*PEP 166, Gippsland Basin (Lakes: Operator; 75% interest)*

#### • PRL 2: Wombat-5 Well

The Company is preparing to drill the Wombat-5 well, a conventional directionally-drilled well targeting the upper, more permeable section of the massive, gas saturated Strzelecki Formation. An Operation Plan has been prepared for submission to the Victorian Regulator to seek approval to drill the well. The Operation Plan describes how the well will be drilled and includes detailed environmental, operational and rehabilitation plans, and addresses all regulatory, cultural heritage, community consultation, monitoring and reporting requirements.

Figure1: Cross-section of Wombat-5 Gas Well



The Wombat-5 has an independently estimated gas production potential of around 10 TJ/d.

(Source of Estimate: Independent modelling of gas production potential is set out in: "Production Forecast for the Proposed Lakes Oil Wombat-5", September 2013, Stimulation Petrophysics Consulting LLC. The Company confirms that all the material assumptions and technical parameters underpinning the estimates referenced above continue to apply and have not materially changed.)

The Wombat and Trifon-Gangell gas fields are proven to contain gas, with the Company having existing vertical wells that are capable of gas production and with the following contingent recoverable gas resources already independently certified. Of the certified resources, Lakes estimates that 250 PJ will be recoverable from the Wombat gas field using conventional methods, and 200 PJ recoverable from Trifon-Gangell.

Table 1: Independently Certified Contingent Recoverable Gas Resources

Field	2C Resource
Wombat	329 PJ
Trifon-Gangell	390 PJ

(Source of estimate: Gafney, Cline and Associates, as reproduced on pages 24-25 of "Independent Specialist Report on the petroleum assets of Navgas Pty Ltd and Lakes Oil NL", SRK Consulting (Australasia) Pty Ltd, made public in December 2016. The Company is not aware of any new information or data that materially affects the information included in the relevant market announcement and confirms that all the material assumptions and technical parameters underpinning the estimates in the relevant market announcement continue to apply and have not materially changed. The estimated quantities of petroleum that may potentially be recovered by the application of a future development project(s) relate to undiscovered accumulations. These estimates have both an associated risk of discovery and a risk of development. Further exploration appraisal and evaluation is required to determine the existence of a significant quantity of potentially moveable hydrocarbons).

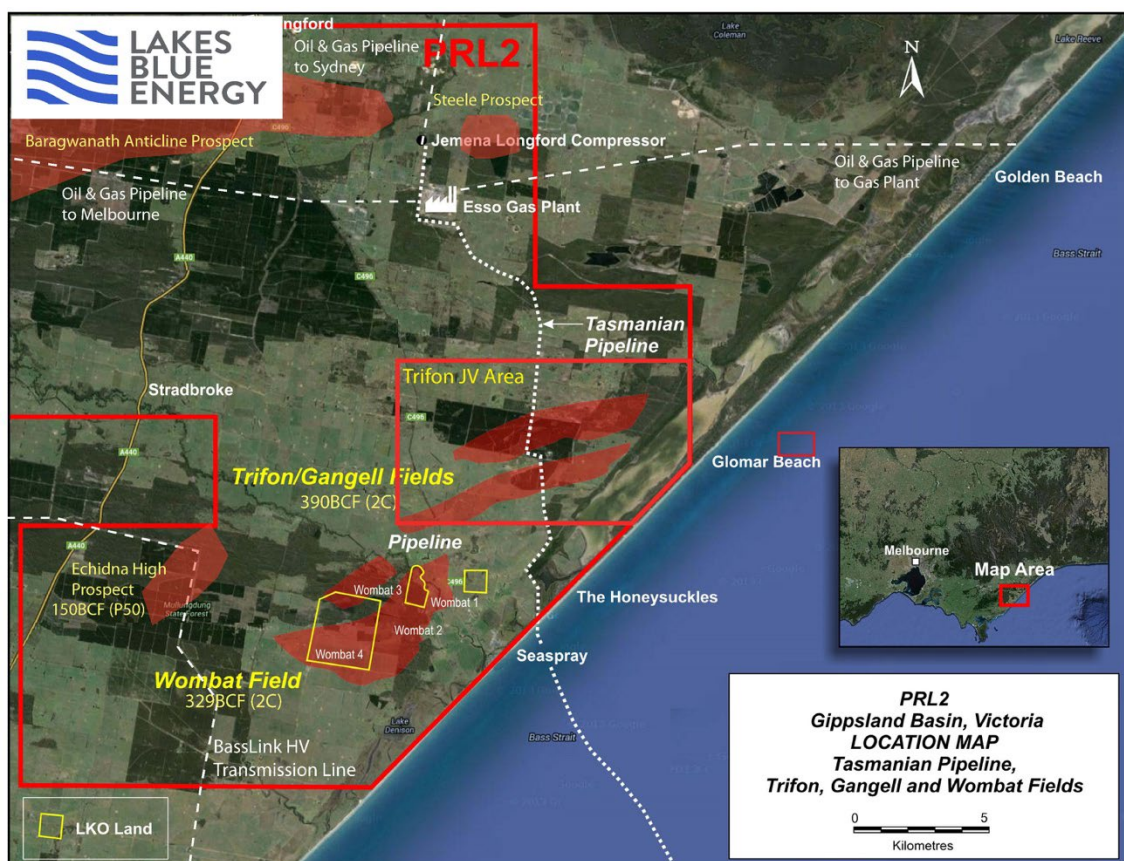
Figure 2: Flaring of gas at the Wombat-1 Gas Well



The Company envisages an integrated approach to development of the Wombat and Trifon-Gangell gas fields, both of which (as announced on 7 May 2024) are now 100% owned by the Company. Given the onshore location of the Wombat Gas Field (close to existing gas pipeline infrastructure) and the knowledge (from testing of historic gas production) that gas from the field is high-quality, it is expected that the field could be brought on line relatively quickly and at low cost.

Sales gas production would initially be from the Wombat gas field with the Trifon-Gangell gas field developed to support steady gas sales over a 20-year period. On this basis, the estimated conventional sales gas potential of the fields is at least 20 PJ/a.

Figure 3: Location of Wombat and Trifon-Gangell Gas Fields



- **PEP 169**

The Company has sold its 49% interest in PEP 169 to AEV, a wholly owned subsidiary of ADZ Energy Pty Ltd. Consideration for the sale comprised \$6.5m cash, of which \$3.0m has been received with the balance payable of completion of transfer of title, plus an ongoing royalty over the wellhead value of petroleum production.

- **PEP 166**

Within PEP 166, the Company is preparing to carry out rehabilitation operations. An Operations Plan was submitted to the VDITR on 22 April 2024. The Department responded on 14 August, outlining changes it requires to be made to the Plan. The Company is in the process of making the requisite changes and, in parallel, is in discussion with service providers to carry out the rehabilitation operations following approval of the Operations Plan.

- **Portland Energy Project (Petroleum Exploration Permit 175)**

The proposed Greenslopes-2 and Portland Energy-1 gas wells are proof-of-concept wells, designed to confirm the conventional gas production potential of the Eumeralla Formation and the underlying Crayfish Subgroup within a 'Focus Area' on the southwestern corner of Petroleum Exploration Permit 175, as depicted in Figure 4.

Figure 4: Location of Focus Area Within PEP 175

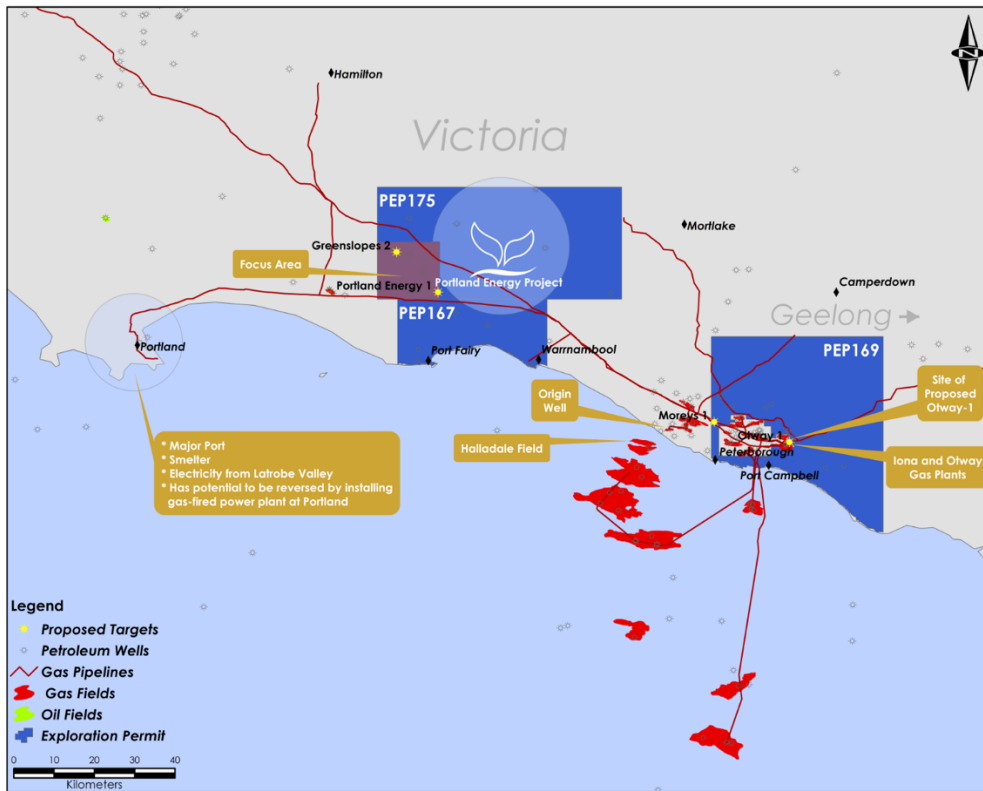
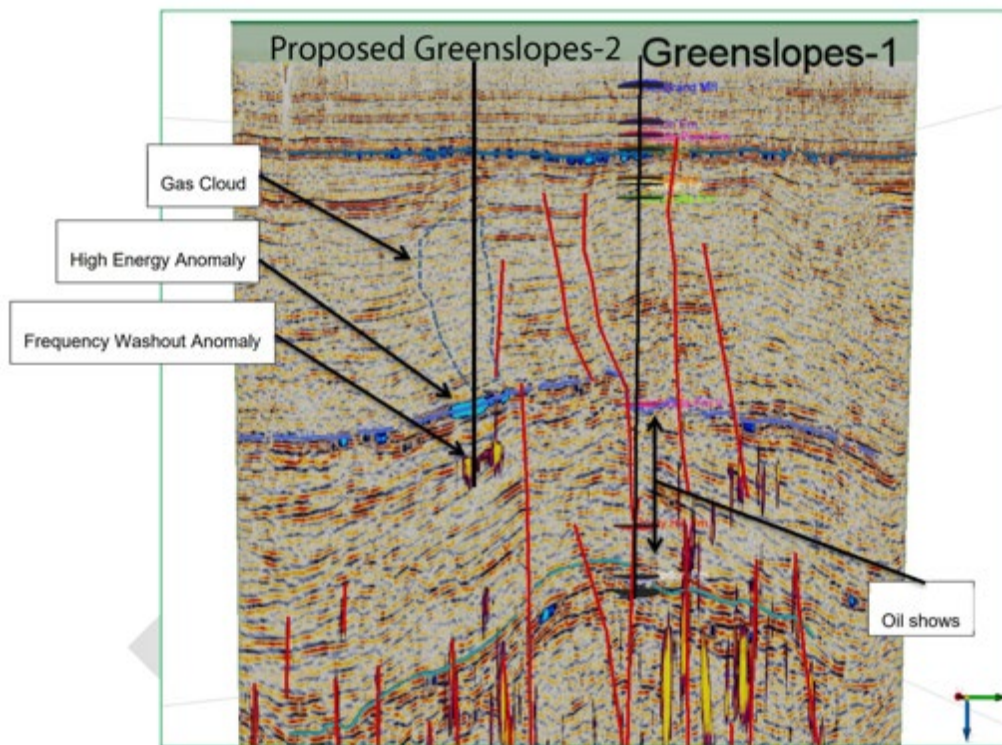


Figure 5: Cross-section through proposed Greenslopes-2 Well (showing seismic attributes)



To date, 14 wells have been historically drilled without incident in the Focus Area region and, without exception, the Eumeralla Formation was shown to contain gas. Historically, this gas was of no interest since the search at the time was for oil. There was no market for gas, nor was there infrastructure through which it could be delivered.

An indication of the significant potential of the Focus Area can be gleaned from work undertaken by SRK Consulting on behalf of Lakes Oil. In May 2015, SRK used available information (essentially historic well logs and seismic data) to estimate the recoverable resources of gas within the Focus Area. SRK concluded (at a 50% confidence level) that there may be 8.3 Tcf of gas recoverable from the Eumeralla Formation and 3.2 Tcf recoverable from deeper Formations.

*(Source of estimate: SRK Consulting (Australasia) Pty Ltd, as reproduced on page 29 of "Independent Specialist Report on the petroleum assets of Navgas Pty Ltd and Lakes Oil NL", SRK Consulting (Australasia) Pty Ltd, made public in December 2016. The Company is not aware of any new information or data that materially affects the information included in the relevant market announcement and confirms that all the material assumptions and technical parameters underpinning the estimates in the relevant market announcement continue to apply and have not materially changed. The estimated quantities of petroleum that may potentially be recovered by the application of a future development project(s) relate to undiscovered accumulations. These estimates have both an associated risk of discovery and a risk of development. Further exploration appraisal and evaluation is required to determine the existence of a significant quantity of potentially moveable hydrocarbons).*

- **Petroleum Exploration Permit 163**

The Company has advised DEECA that it will relinquish Petroleum Exploration Permit 163. It is assessed to have limited petroleum potential.

## Papua New Guinea

PPL 560 (Lakes: Operator, 100% interest)

- The Company has control of a portfolio of highly prospective exploration acreage in Papua New Guinea. One key tenement is Petroleum Prospecting Licence (PPL) 560, which contains the multi-trillion cubic feet Buna prospect.

Figure 6: PNG Interests

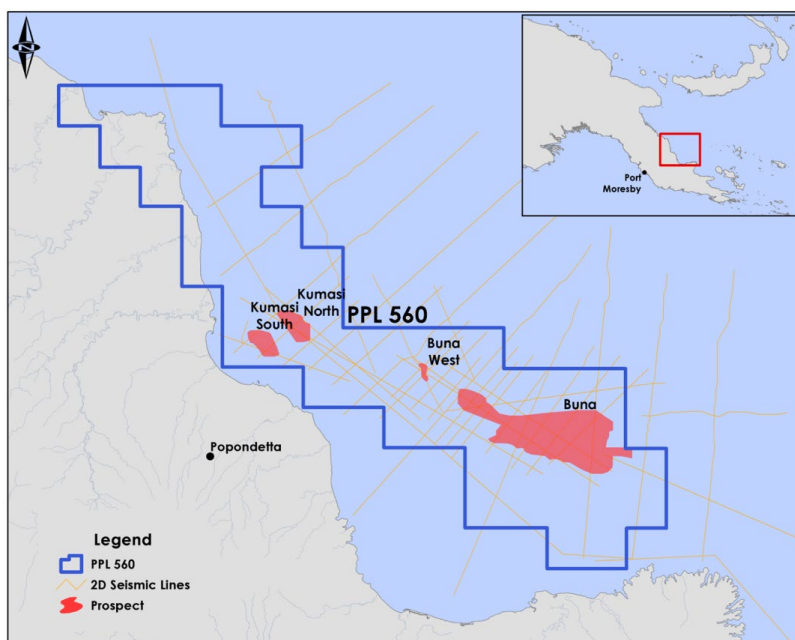
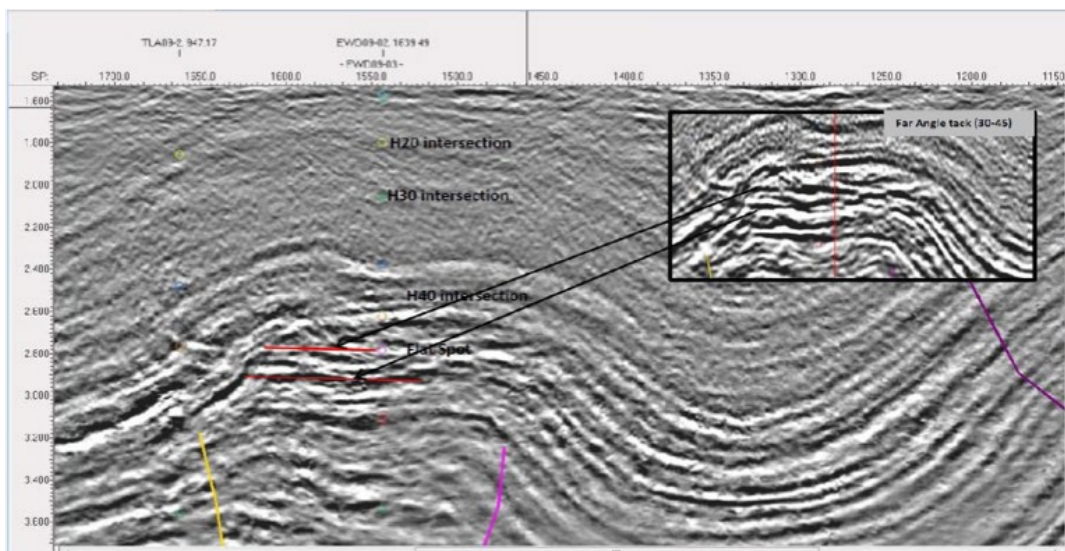




Figure 7: Buna Prospect Seismic Cross-section



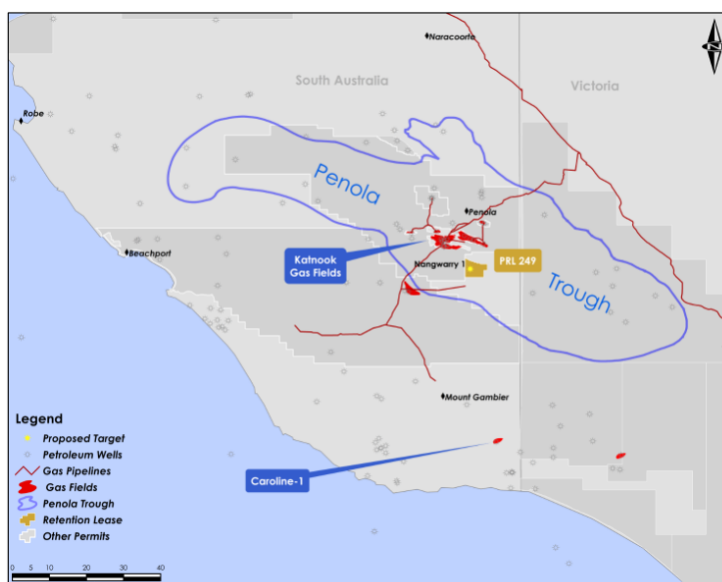
- Under the terms of a Technical Cooperation Agreement ('TCA') with TotalEnergies EP PNG Limited (TotalEnergies), a subsidiary of French supermajor TotalEnergies SE, TotalEnergies carried out, at its cost, a technical work program involving analysis of the rock and fluid samples, and comprehensive geological and geophysical studies. TotalEnergies confirmed the prognosed size of the Buna prospect but considered the prospect may be oil, rather than gas, prone. *Figure 7: Illustrative Buna Cross-section*
- The Company is investigating options for progressing exploration activity at Buna.

### South Australia

PRL 249, Nangwarry Carbon Dioxide Project (Lakes Oil: 50% interest)

- The Company, with joint venture partner Vintage Energy Pty Ltd, is continuing investigations of options for development of the Nangwarry-1 well to produce carbon dioxide for industrial, medical and food use.
- The Nangwarry-1 well is presently completed and suspended pending any development decision. Site rehabilitation and monitoring have been successfully completed, with no environmental impacts detected.

Figure 8: Location of Nangwarry-1 Gas Well



The certified carbon dioxide sales gas resource of the Nangwarry project is as tabulated below:

Table 2: Carbon Dioxide Sales Gas Resource

CO <sub>2</sub> Gross Sales Gas Estimate			Gross Natural Gas Contingent Resource		
Low	Best	High	1C	2C	3C
9.0 Bscf	25.9 Bscf	64.4 Bscf	0.5 Bscf	1.6 Bscf	4.1 Bscf

CO <sub>2</sub> Net Sales Gas Estimate			Net Natural Gas Contingent Resource		
Low	Best	High	1C	2C	3C
4.5 Bscf	12.9 Bscf	32.2 Bscf	0.3 Bscf	0.8 Bscf	2.0 Bscf

Notes:

1. Gross volumes represent a 100% total of estimated recoverable volumes within PRL 249.
2. Working interest volumes for Otway Energy Ltd's and Vintage Energy Ltd's share of the Gross recoverable volumes can be calculated by applying their working interest in PRL 249, which is 50% each.
3. Sales gas stream for Nangwarry is CO<sub>2</sub> gas.
4. Gross Contingent Resource represents a 100% total of estimated recoverable hydrocarbon gas volumes within PRL 249.
5. These are unrisks Contingent Resources that have not been risked for Chance of Development and are sub-classified as Development Unclassified.

The independent estimate was prepared by ERC Equipose Pte Ltd (**ERCE**) using a probabilistic methodology. Under the June 2018 Society of Engineers Petroleum Resources Management System, (**PRMS**), volumes of non-hydrocarbon by-products cannot be included in any Reserves or Resources classification. However, the method used by ERCE is consistent with that prescribed by the PRMS.

ERCE is an independent consultancy specialising in geoscience evaluation, engineering and economic assessment. ERCE has the relevant and appropriate qualifications, experience and technical knowledge to appraise professionally and independently the assets.

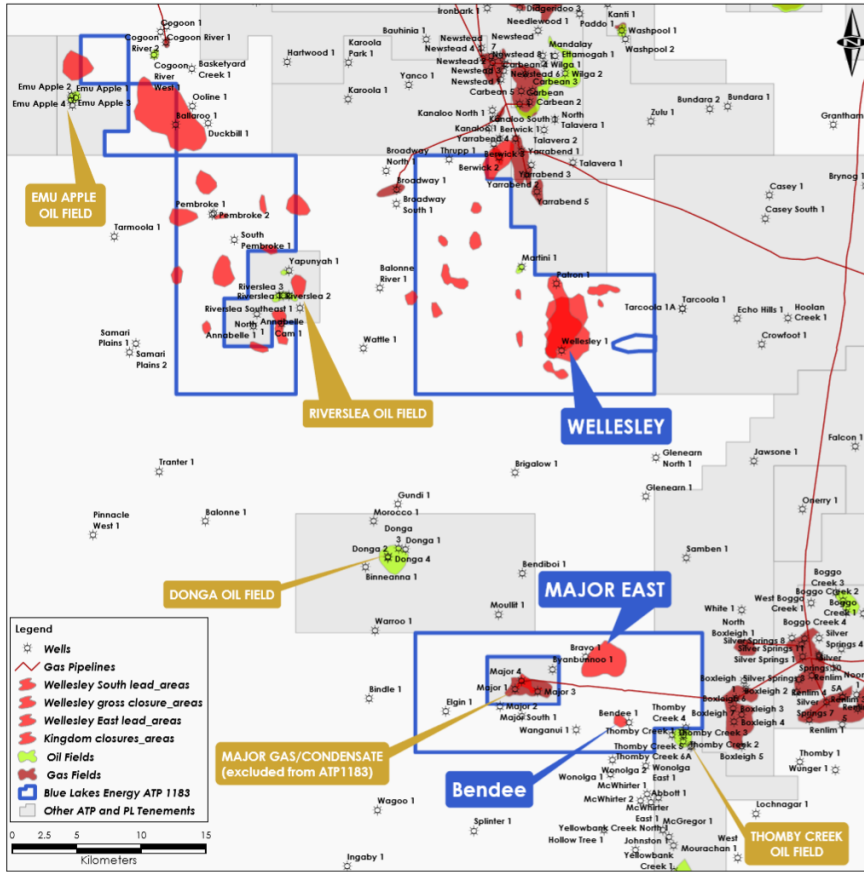
ERCE's work was supervised by Mr Adam Becis, Principal Reservoir Engineer at ERCE, who has over 14 years of experience in the oil and gas industry. He is a member of the Society of Petroleum Engineers and also a member of the Society of Petroleum Evaluation Engineers. Mr Becis has consented to the form and context in which the estimate of carbon dioxide sales gas is presented.

## Queensland, Roma Shelf Project

ATP 1183 (Lakes: Operator, 100% interest)

- ATP 1183 is highly prospective for oil, gas and condensate discoveries, and is within close proximity of established production facilities and infrastructure.

Figure 9: ATP 1183, Queensland



- ATP 1183 contains multiple exploration targets, as illustrated above and summarised in Table 2. Prospects of key interest to the Company are:

Table 3: ATP 1183 Resource Potential

Prospect	Potential (Economic Ultimately Recoverable)
Emu Apple	1.3 MMBbl oil
Riverslea Updip	7.5 MMBbl oil across 17 targets
Major	8.5 Bcf gas across 5 targets
Bendee	0.2 MMBbl oil
Wellesley	85 - 112 Bcf gas across 18 targets

The estimates set out in Table 2 are best estimates prepared on a deterministic basis by Mr Peter Bubendorfer, Geotechnical Assessor, Armour Energy Limited. Mr Bubendorfer holds a BSc in Geology, is a member of AAPG, and has over 22 years of relevant experience in hydrocarbon exploration and production. He has consented to the use of the estimate in the form and context in which it appears in this report.

## Near-shore Victoria (Gippsland Basin)

VIC/P43(V) and VIC/P44(V) (Lakes: Operator, 100% interest)

- The Company intends to relinquish these permits.
- While these permits could contain some extension of the onshore resources of PRL2, it would be premature to incur exploration expenditure to investigate their potential. It is prudent to first confirm the commerciality of the certified contingent resources of PRL2, work which was delayed by some 10 years following the Victorian onshore exploration ban.

## South Australia, Arrowie Basin

PELAs (Lakes: royalty interest only)

- Gehyra Exploration Pty Ltd (**Gehyra**) has ownership six Petroleum Exploration Licence Applications (**PELAs**) located in South Australia. These were previously owned by the Company and referred to as the Pirie Torrens Oil & Gas Project.
- Lakes has or will also receive the following payments from Gehyra:
  - \$150,000 (already received);
  - \$350,000 on the earlier of 18 months from May 2024 or within 20 days of Gehyra obtaining official quotation on the ASX;
  - \$1.0 million on announcement of first continuous production of helium or petroleum from any of the PELAs; and
  - a royalty of 3.5% on the value of any petroleum produced, and 2.5% on the value of any hydrogen or helium produced from the licence areas.
- Gehyra is, at its cost, progressing native title negotiations that are a prerequisite for granting of six Petroleum Exploration Licences in the South Australian Arkaringa Basin, following which Gehyra will carry out exploration work.

## Eagle Prospect, Onshore California, USA

(Lakes: 17.97% interest. Operator: Strata –X Inc.)

- The Eagle Prospect contains the Mary Bellochi-1 well, which was drilled in 1986 by Lakes and its joint venture partners, and flowed oil to surface for several weeks before withering out. Indications at the time were that failure of the well was the result of a mechanical problem, rather than oil ceasing to be present.
- The Company is seeking to dispose of its Eagle Prospect interest.

This announcement is authorised for release to the market by the Board of Directors of Lakes Blue Energy NL.

For further details please contact:



Roland Sleeman  
Chief Executive Officer  
Lakes Blue Energy NL  
Ph: +61 3 9629 1566

## Lakes Blue Energy NL Tenement holding summary

Below is a listing of the tenements held by Lakes Blue Energy NL as at 30 September 2024:

Joint operation or Permit name	Location (basin name)	Interest owned %	Interest % acquired/farmin during the quarter	Interest % disposed/farmout during the quarter
PEP 163	Otway	100	-	-
PEP 167	Otway	100	-	-
PEP 169	Otway	0	-	49
PEP 175	Otway	100	-	-
PRL 2-Overall Permit	Gippsland	100	-	-
PRL 2 - Trifon Field	Gippsland	100	42.5	-
PRL 3	Gippsland	100	-	-
PEP 166	Gippsland	75	-	-
VIC/P43(V)	Gippsland	100	-	-
VIC/P44(V)	Gippsland	100	-	-
ATP 1183	Surat/Bowen	100	-	-
Eagle Prospect	California USA	17.97	-	-
PELA 577*	Pirie Torrens, SA	0	-	100
PELA 578*	Pirie Torrens, SA	0	-	100
PELA 579*	Pirie Torrens, SA	0	-	100
PELA 601*	Pirie Torrens, SA	0	-	100
PELA 602*	Pirie Torrens, SA	0	-	100
PELA 631*	Pirie Torrens, SA	0	-	100
PRL 249	Otway	50	-	-
PPL 549	PNG	100	-	-
PPL 560	PNG	100	-	-
APPL 550*	PNG	100	-	-
APPL 594 *	PNG	100	-	-

\*Tenements in application phase only, remain subject to government approvals.

### **Cautionary statement**

*The Company is not aware of any new information or data that materially affects the information included in the relevant market announcement and confirms that all the material assumptions and technical parameters underpinning the estimates in the relevant market announcement continue to apply and have not materially changed. The estimated quantities of petroleum that may potentially be recovered by the application of a future development project(s) relate to undiscovered accumulations. These estimates have both an associated risk of discovery and a risk of development. Further exploration appraisal and evaluation is required to determine the existence of a significant quantity of potentially moveable hydrocarbons).*

## Appendix 5B

### Mining exploration entity or oil and gas exploration entity quarterly cash flow report

Name of entity

LAKES BLUE ENERGY NL

ABN

62 004 247 214

Quarter ended ("current quarter")

30 September 2024

Consolidated statement of cash flows	Current quarter \$A'000	Year to date (3 months) \$A'000
<b>1. Cash flows from operating activities</b>		
1.1 Receipts from customers	-	-
1.2 Payments for		
(a) exploration & evaluation	-	-
(b) development	-	-
(c) production	-	-
(d) staff costs	(44)	(44)
(e) administration and corporate costs	(111)	(111)
1.3 Dividends received (see note 3)	-	-
1.4 Interest received	2	2
1.5 Interest and other costs of finance paid	-	-
1.6 Income taxes paid	-	-
1.7 Government grants and tax incentives	-	-
1.8 Other Receipts (sale of equipment, reimbursement of costs)	24	24
<b>1.9 Net cash from / (used in) operating activities</b>	<b>(129)</b>	<b>(129)</b>
<b>2. Cash flows from investing activities</b>		
2.1 Payments to acquire or for:		
(a) entities	-	-
(b) tenements	-	-
(c) property, plant and equipment	-	-
(d) exploration & evaluation	-	-
(e) investments	-	-
(f) other non-current assets	-	-

Consolidated statement of cash flows		Current quarter \$A'000	Year to date (3 months) \$A'000
2.2	Proceeds from the disposal of:		
	(a) entities	-	-
	(b) tenements	-	-
	(c) property, plant and equipment	-	-
	(d) investments	-	-
	(e) other non-current assets	-	-
2.3	Cash flows from loans to other entities	-	-
2.4	Dividends received (see note 3)	-	-
2.5	Other (refund of deposits)	-	-
<b>2.6</b>	<b>Net cash from / (used in) investing activities</b>	-	-
<b>3.</b>	<b>Cash flows from financing activities</b>		
3.1	Proceeds from issues of equity securities (excluding convertible debt securities)	-	-
3.2	Proceeds from issue of convertible debt securities	-	-
3.3	Proceeds from exercise of options	-	-
3.4	Transaction costs related to issues of equity securities or convertible debt securities	-	-
3.5	Proceeds from borrowings	-	-
3.6	Repayment of borrowings	-	-
3.7	Transaction costs related to loans and borrowings	-	-
3.8	Dividends paid	-	-
3.9	Other (Funds held for securities yet to be issued)	-	-
<b>3.10</b>	<b>Net cash from / (used in) financing activities</b>	-	-
<b>4.</b>	<b>Net increase / (decrease) in cash and cash equivalents for the period</b>		
4.1	Cash and cash equivalents at beginning of period	203	203
4.2	Net cash from / (used in) operating activities (item 1.9 above)	(129)	(129)
4.3	Net cash from / (used in) investing activities (item 2.6 above)	-	-
4.4	Net cash from / (used in) financing activities (item 3.10 above)	-	-

## Mining exploration entity or oil and gas exploration entity quarterly cash flow report

Consolidated statement of cash flows		Current quarter \$A'000	Year to date (3 months) \$A'000
4.5	Effect of movement in exchange rates on cash held	-	-
<b>4.6</b>	<b>Cash and cash equivalents at end of period</b>	<b>74</b>	<b>74</b>

5. Reconciliation of cash and cash equivalents at the end of the quarter (as shown in the consolidated statement of cash flows) to the related items in the accounts		Current quarter \$A'000	Previous quarter \$A'000
5.1	Bank balances	3	3
5.2	Call deposits	71	71
5.3	Bank overdrafts	-	-
5.4	Other (restricted or funds held in escrow)	-	-
<b>5.5</b>	<b>Cash and cash equivalents at end of quarter (should equal item 4.6 above)</b>		

6. Payments to related parties of the entity and their associates		Current quarter \$A'000
6.1	Aggregate amount of payments to related parties and their associates included in item 1	-
6.2	Aggregate amount of payments to related parties and their associates included in item 2	-

*Note: if any amounts are shown in items 6.1 or 6.2, your quarterly activity report must include a description of, and an explanation for, such payments.*



## Mining exploration entity or oil and gas exploration entity quarterly cash flow report

7. <b>Financing facilities</b>	<b>Total facility amount at quarter end \$A'000</b>	<b>Amount drawn at quarter end \$A'000</b>
<i>Note: the term "facility" includes all forms of financing arrangements available to the entity. Add notes as necessary for an understanding of the sources of finance available to the entity.</i>		
7.1 Loan facilities	-	-
7.2 Credit standby arrangements	-	-
7.3 Other (loan from related party and unrelated entity)	-	-
7.4 <b>Total financing facilities</b>	-	-
7.5 <b>Unused financing facilities available at quarter end</b>		-
7.6 Include in the box below a description of each facility above, including the lender, interest rate, maturity date and whether it is secured or unsecured. If any additional financing facilities have been entered into or are proposed to be entered into after quarter end, include a note providing details of those facilities as well.	<div style="border: 1px solid black; padding: 5px; min-height: 100px;"> <p>N/A</p> </div>	

8. <b>Estimated cash available for future operating activities</b>	<b>\$A'000</b>
8.1 Net cash from / (used in) operating activities (item 1.9)	(129)
8.2 Payments for exploration & evaluation classified as investing activities (item 2.1(d))	-
8.3 Total relevant outgoings (item 8.1 + item 8.2)	(129)
8.4 Cash and cash equivalents at quarter end (item 4.6)	74
8.5 Unused finance facilities available at quarter end (item 7.5)	-
8.6 Total available funding (item 8.4 + item 8.5)	74
8.7 <b>Estimated quarters of funding available (item 8.6 divided by item 8.3)</b>	0.57
<i>Note: if the entity has reported positive relevant outgoings (ie a net cash inflow) in item 8.3, answer item 8.7 as "N/A". Otherwise, a figure for the estimated quarters of funding available must be included in item 8.7.</i>	
8.8 If item 8.7 is less than 2 quarters, please provide answers to the following questions:	
8.8.1 Does the entity expect that it will continue to have the current level of net operating cash flows for the time being and, if not, why not?	
<p>Answer: No. The Company received \$3m in receipts in October 2024 for the sale of Lakes' interest in PEP 169. Operating cash outflows are expected to increase in the December 2024 quarter due to payment of a significant amount of historical trade creditor balances that were due and payable. Beyond this initial outflow, operating cash flows are expected to normalise in the following quarter, until the commencement of further drilling activities.</p>	
8.8.2 Has the entity taken any steps, or does it propose to take any steps, to raise further cash to fund its operations and, if so, what are those steps and how likely does it believe that they will be successful?	
<p>Answer: On 21 October 2024, the Company announced that preconditions for completion of the sale of Lakes' 49% interest in PEP 169 were fulfilled by 4 October 2024, and the sales transaction was completed on 9 October with the first \$3m of funds received.</p>	

## Mining exploration entity or oil and gas exploration entity quarterly cash flow report

8.8.3 Does the entity expect to be able to continue its operations and to meet its business objectives and, if so, on what basis?

Answer: Yes, based on the response to 8.8.2, the Company anticipates it will be able to continue operations and meet its business objectives.

Note: where item 8.7 is less than 2 quarters, all of questions 8.8.1, 8.8.2 and 8.8.3 above must be answered.

### Compliance statement

- 1 This statement has been prepared in accordance with accounting standards and policies which comply with Listing Rule 19.11A.
- 2 This statement gives a true and fair view of the matters disclosed.

Date: 30 October 2024

Authorised by: The Board of Directors

### Notes

1. This quarterly cash flow report and the accompanying activity report provide a basis for informing the market about the entity's activities for the past quarter, how they have been financed and the effect this has had on its cash position. An entity that wishes to disclose additional information over and above the minimum required under the Listing Rules is encouraged to do so.
2. If this quarterly cash flow report has been prepared in accordance with Australian Accounting Standards, the definitions in, and provisions of, *AASB 6: Exploration for and Evaluation of Mineral Resources* and *AASB 107: Statement of Cash Flows* apply to this report. If this quarterly cash flow report has been prepared in accordance with other accounting standards agreed by ASX pursuant to Listing Rule 19.11A, the corresponding equivalent standards apply to this report.
3. Dividends received may be classified either as cash flows from operating activities or cash flows from investing activities, depending on the accounting policy of the entity.
4. If this report has been authorised for release to the market by your board of directors, you can insert here: "By the board". If it has been authorised for release to the market by a committee of your board of directors, you can insert here: "By the [name of board committee – eg Audit and Risk Committee]". If it has been authorised for release to the market by a disclosure committee, you can insert here: "By the Disclosure Committee".
5. If this report has been authorised for release to the market by your board of directors and you wish to hold yourself out as complying with recommendation 4.2 of the ASX Corporate Governance Council's *Corporate Governance Principles and Recommendations*, the board should have received a declaration from its CEO and CFO that, in their opinion, the financial records of the entity have been properly maintained, that this report complies with the appropriate accounting standards and gives a true and fair view of the cash flows of the entity, and that their opinion has been formed on the basis of a sound system of risk management and internal control which is operating effectively.