

# ***Kula Gold Limited Corporate Presentation***

***Mt Palmer Gold Mine Region***

***'A rare underexplored jewel in the goldfields'***

[www.kulagold.com.au](http://www.kulagold.com.au)

**ASX / KGD**



# DISCLAIMER, COMPETENT PERSON AND REFERENCES



## Cautionary Statement:

### Forward Looking Statement:

This Presentation may include statements that could be deemed “forward-looking statements”. Although Kula Gold Limited (the Company) believes the expectations expressed in such forward-looking statements are based on reasonable assumptions, such statements are no guarantee of future performance and actual results or developments may differ materially from those expected in the forward-looking statements or not take place at all.

This Presentation is not, and should not be considered to, constitute any offer to sell, or solicitation of an offer to buy, any securities in the Company, and no part of this Presentation forms the basis of any contract or commitment whatsoever with any person. The Company does not accept any liability to any person in relation to the distribution or possession of this Presentation from or in any jurisdiction.

### Disclaimer

Whilst care has been exercised in preparing and presenting this Presentation, to the maximum extent permitted by law, the Company and its representatives:

- make no representation, warranty or undertaking, express or implied, as to the adequacy, accuracy, completeness or reasonableness of this Presentation;
- accept no responsibility or liability as to the adequacy, accuracy, completeness or reasonableness of this Presentation; and
- accept no responsibility for any errors or omissions from this Presentation.

The Company confirms that it is not aware of any new information or data that materially affects the information included in the original market announcements and that all material assumptions and technical parameters underpinning the estimates in the relevant market announcements continue to apply and have not materially changed. The company confirms that the form and context in which the Competent Person's findings are presented have not been materially modified from the original market announcements.

### Competent Person Statement

The information in this report that relates to geology and exploration is based on information compiled by Mr. Ric Dawson, a Competent Person who is a member of the Australian Institute of Mining and Metallurgy. Mr. Dawson is a Geology and Exploration Consultant who has been engaged by Kula Gold Limited. Mr. Dawson has sufficient experience, which is relevant to the style of mineralisation, geology and type of deposit under consideration and to the activity being undertaken to qualify as a competent person under the 2012 edition of the Australasian Code for Reporting Exploration Results, Mineral Resources and Ore Reserves (the 2012 JORC Code). Mr. Dawson consents to the inclusion in the report of the matters based on his information in the form and context in which it appears.

## References:

### MT PALMER GOLD MINE

- Aurumin ASX Release: Mt Palmer Exploration Update - 20 October 2021
- Kula Gold ASX Release: Kula to Acquire Historic Mt Palmer Gold Mine & Placement- 31 May 2024
- Kula Gold ASX Release: Results of General Meeting - 10 July 2024
- Kula Gold ASX Release: RC Drilling Commences at Historic Mt Palmer -17 July 2024
- Kula Gold ASX Release: New Lode to 6.66g/t Gold in Shallow RC drilling - Mt Palmer 29 August 2024
- Kula Gold ASX Release: Diamond core drilling commences at Mt Palmer Gold Mine -11 September 2024
- Kula Gold ASX Release: Mt Palmer Gold Mine – El Dorado Prospect historical 6m @ 8.3g/t gold to follow up - 26 September 2024
- Kula Gold ASX release Mt Palmer Gold Mne – East Prospect -10 October 2024

### KIRUP PROJECT

- Kula Gold ASX release: Kirup Exploration Update - 1 February 2024

### BOOMERANG DEPOSIT

- Kula Gold ASX Release – Boomerang Kaolin Deposit- Maiden JORC Resources - 20 July 2022

Kula Gold Ltd ACN:126 741 259

# KULA CAPITAL STRUCTURE

## SHARES ON ISSUE

**ASX: KGD**

**643,211,921** Fully paid shares (ASX:KGD)

**42,225,000** Unlisted Options of varying prices and expiry dates

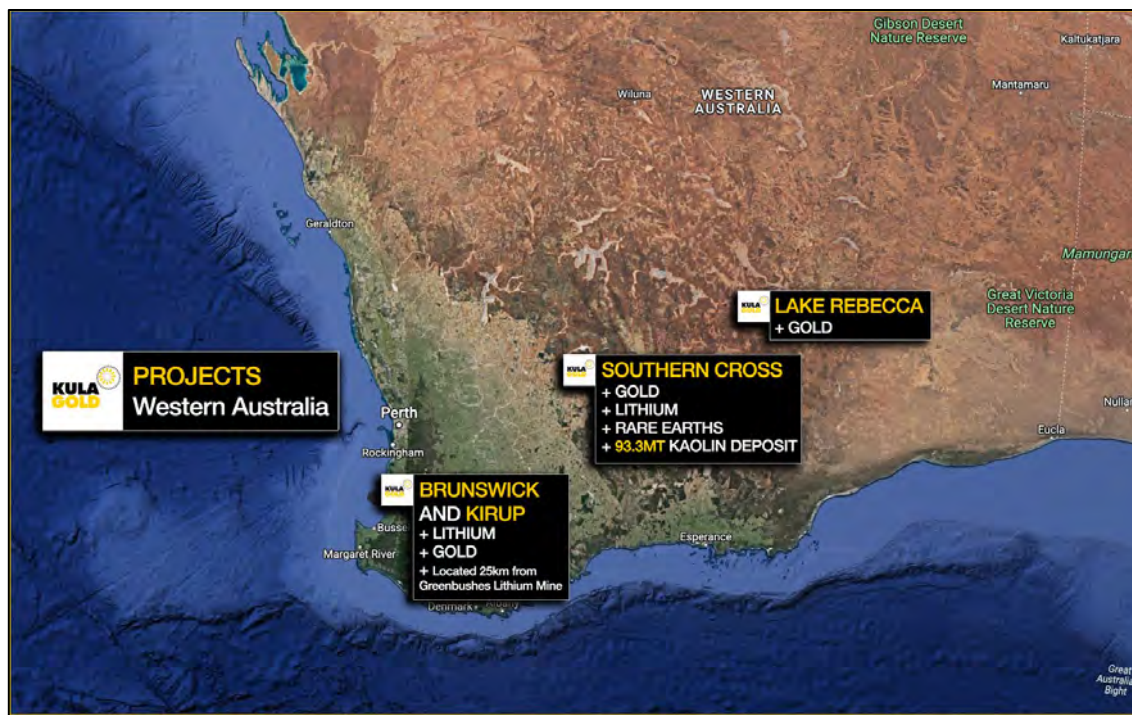
**Market Capitalisation @ 0.8c / share:** ~\$5.15m

**Cash balance (June '24 Qtr):** ~\$0.75m

**Debt:** \$0.0m

## Major Shareholders:

☐ Mark Stowell & Associates 6.0% (Chair)



**ASX / KGD**



# KULA BOARD AND TEAM



**Mark STOWELL**

BBus, CA

**Chair**

The founding Chairman of Mawson West Ltd, a copper producer and explorer which completed an IPO on the Toronto Stock Exchange in one of the largest base metal IPO's of 2011. He was a founder and Non-Executive Director of Incremental Petroleum Limited, and Anvil Mining Ltd. Also Chair of Southern Hemisphere Mining Ltd.



**Mark BOJANJAC**

BCom, CA

**Director**

A founding director of Gilt-Edged Mining Ltd which discovered one of Australia's highest grade gold mines and managing director of an unlisted public company which successfully developed and financed a 2.4Moz gold resource in Mongolia. He was previously CEO of Adamus Resources Limited. Also Chair of PolarX Ltd and Metallica Minerals Ltd



**Ric DAWSON**

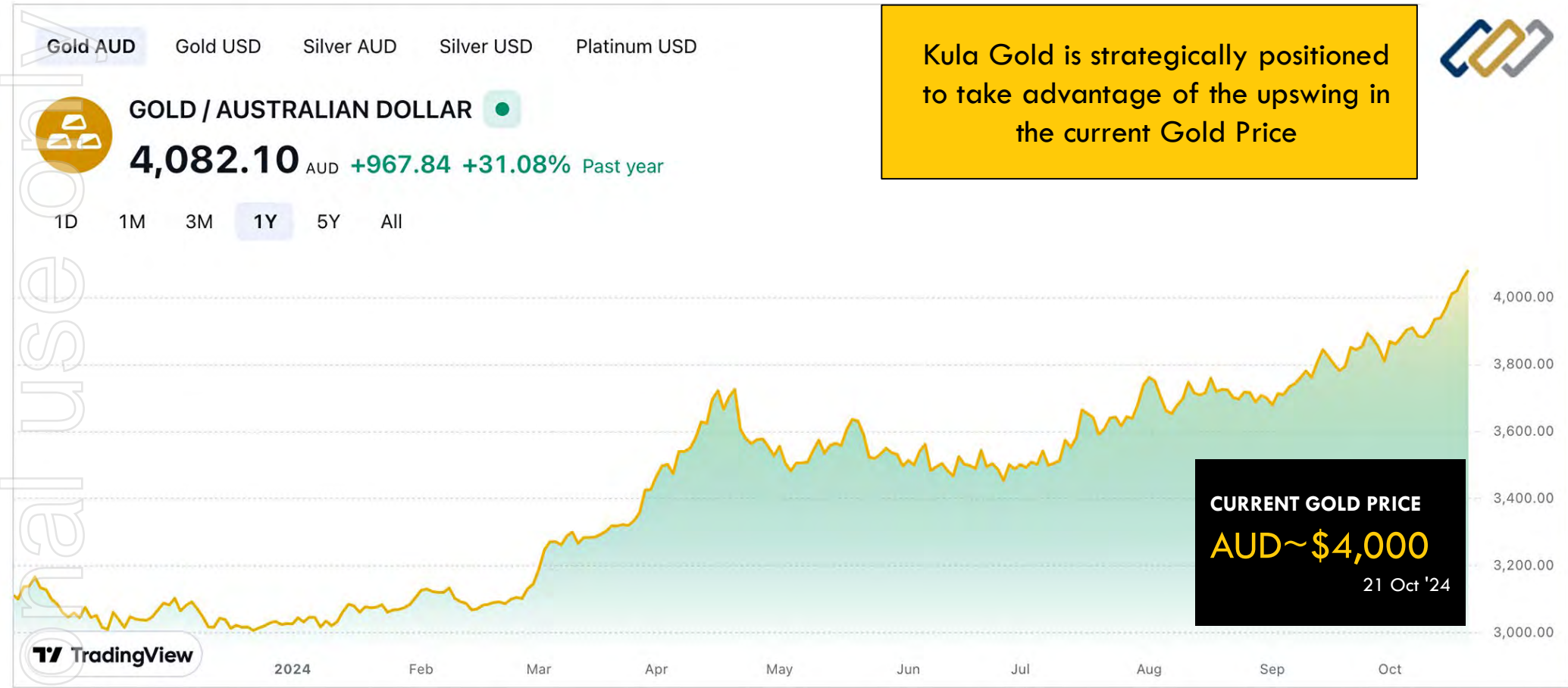
B.App.Sc (Geo.) MBA, MAusIMM, MAICD

**Managing Director**

Experienced geologist and senior executive manager in multiple ASX entities, founding Managing Director of Prosperity Resources Ltd, inaugural Managing Director of Altech Ltd (formerly AMMG Ltd). Experienced in developing projects from grassroots to resources.

**ASX / KGD**

# KULA GOLD STRATEGY



Kula Gold is strategically positioned to take advantage of the upswing in the current Gold Price



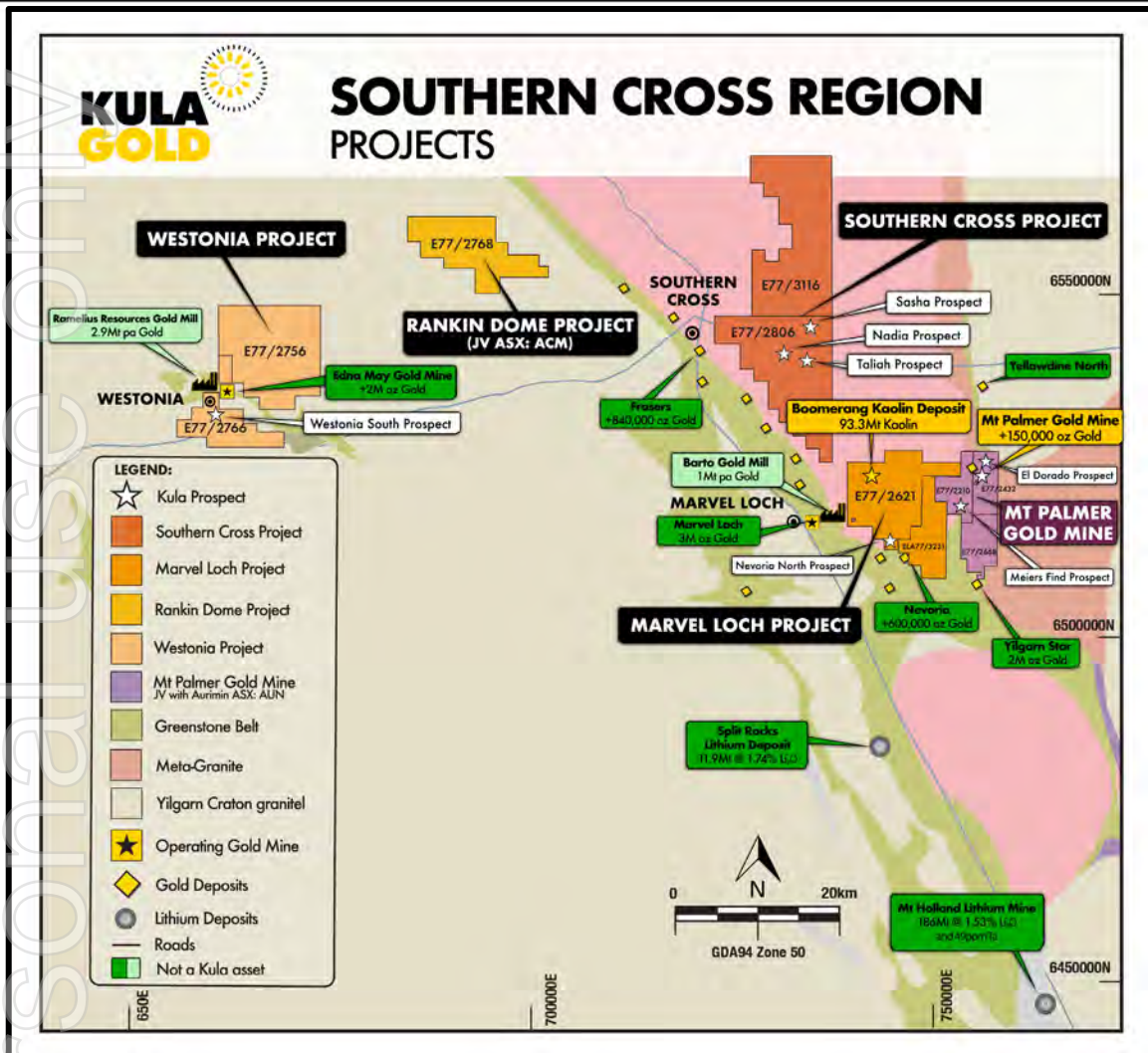
**ASX / KGD**

Source: <https://www.goldbullionaustralia.com.au/live-charts-prices/#gold>



# KULA PROJECTS – Across the Southern Cross Region

- Featuring Mt Palmer Gold Mine

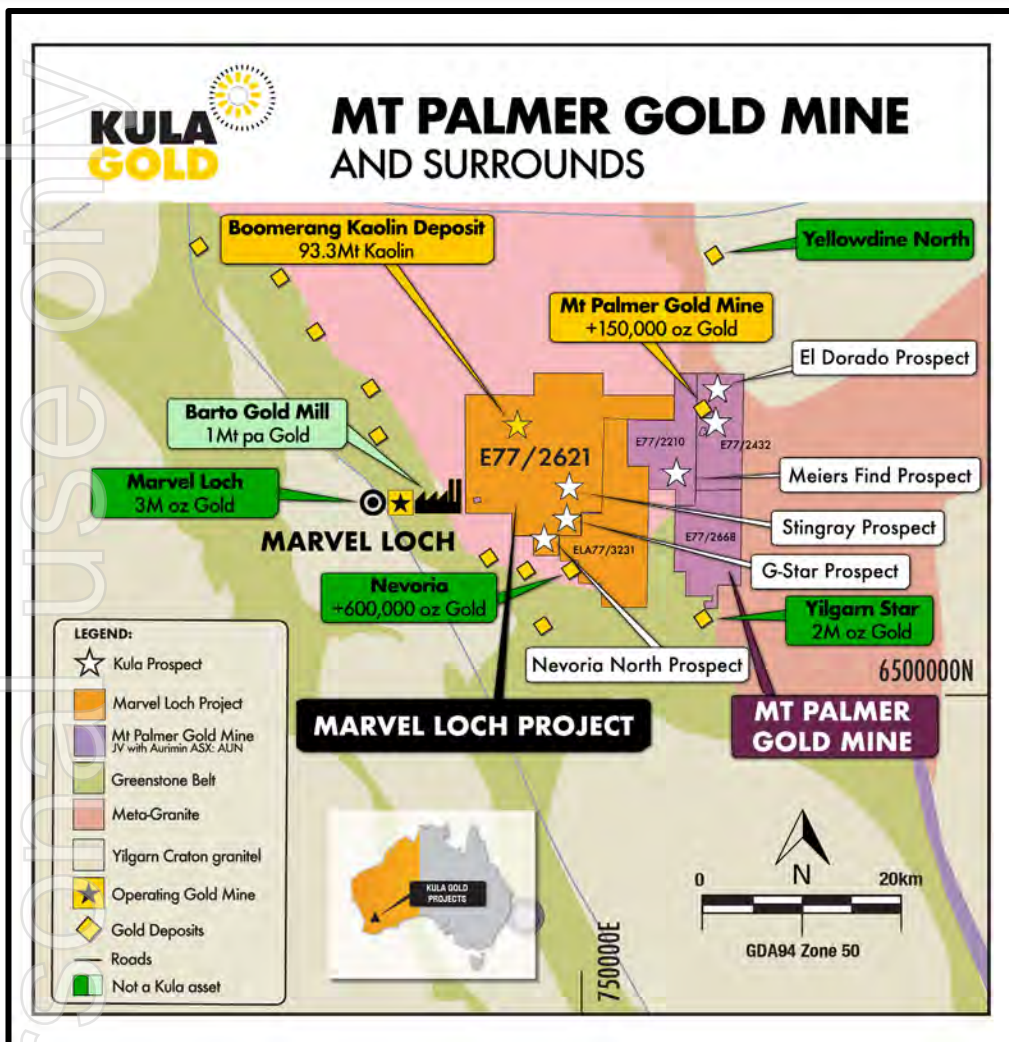


- ☐ **Mt Palmer Gold Mine**
  - Historical Gold Mine (150,000 oz production to 1937-44)
  - Gold Prospects
  - JV ASX: AUN
- ☐ **Southern Cross Project**
  - Lithium Prospects
- ☐ **Marvel Loch Project**
  - Boomerang Kaolin Deposit 93.3Mt
  - Gold Prospects
- ☐ **Westonia Project**
  - Gold Prospects
  - Adjacent to Edna May Plant 1km
- ☐ **Rankin Dome Project**
  - Gold + REE Prospects
  - JV ASX: ACM

**ASX / KGD**

# KULA PROJECT

## - Mt Palmer Gold Mine and surrounds



### □ Mt Palmer Gold Mine + Surrounds

- Mt Palmer Mine Main Lode
- Bryant Lode
- El Dorado Prospect
- Meiers Find Prospect
- Mt Palmer East Prospect
- Boomerang Kaolin Deposit 93.3Mt  
(indicated resource of 15.2Mt & inferred resource of 78.1Mt)
- G Star, Nevoria North, Stingray Prospects

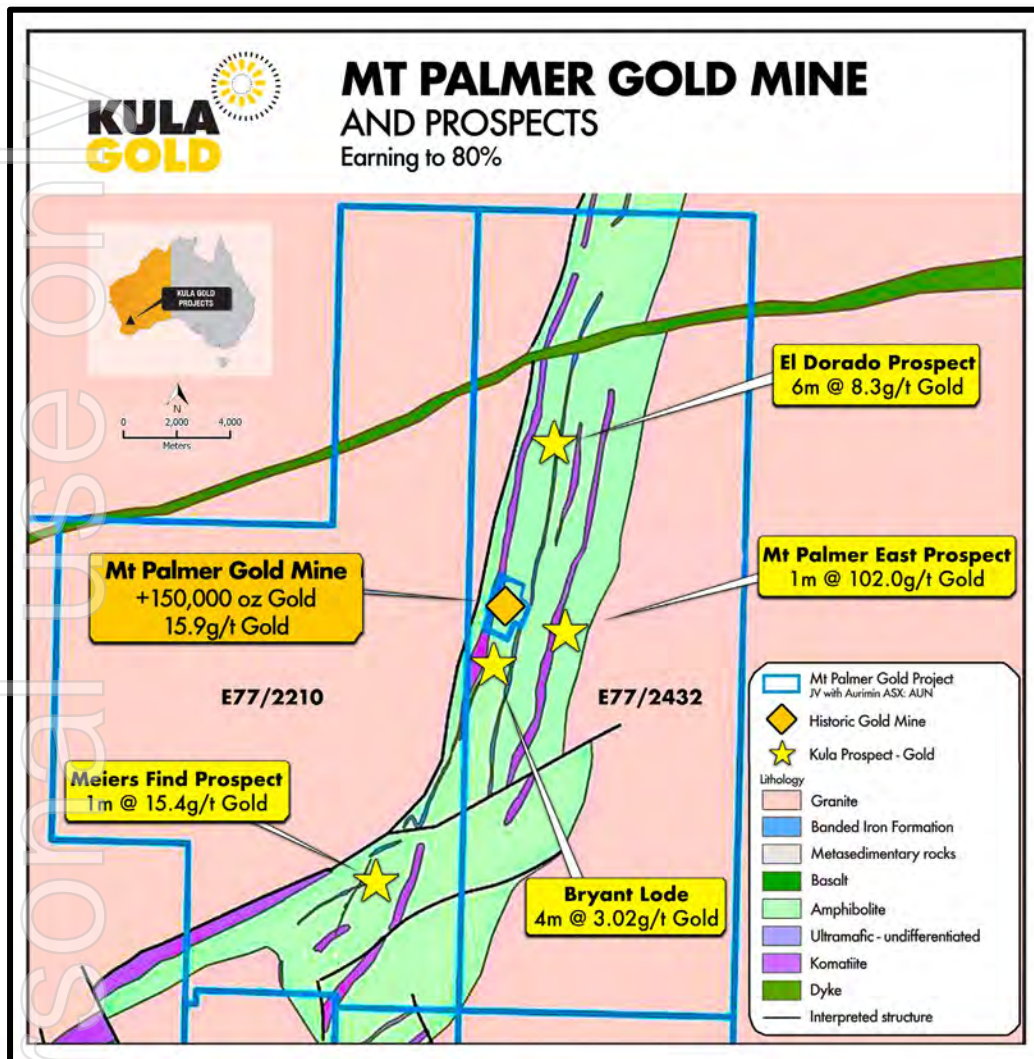
**Marvel Loch's processing plant  
is only 20km away**

**ASX / KGD**



# MT PALMER GOLD MINE – Prospects Overview

- Gold Mineralisation at the historic WA high-grade mine



## □ **Mt Palmer Gold Mine + Prospects**

- Mt Palmer Mine Main Lode – 15.9g/t
- Bryant Lode – 4m @ 3.02g/t
- El Dorado Prospect – 6m @ 8.3g/t
- Meiers Find Prospect – 1m @ 15.4g/t
- Mt Palmer East Prospect – 1m @ 102g/t

- ✓ **Control of the Greenstone Belt**  
**around Mt Palmer.**
- ✓ **Kula's to fully explore.**

ASX Announcement References: New Lode to 6.66g/t Gold - RC Drilling - Mt Palmer Gold Mine, dated 29 August 2024.  
Mt Palmer Gold Mine - El Dorado Prospect Update, dated 26 September 2024.  
Mt Palmer Gold Mine - East Prospect, dated 10 October 2024.





# MT PALMER GOLD MINE – Advancement Timeline

## - Strategic Phases 2024 into 2025

### PHASE 1 – Q4 2024

- ☐ Exploration at Mt Palmer Mine
- ☐ RC Drilling 1300m Programme  
800m Bryant Lode / 150m El Dorado /  
150m Meiers Find / 200m Mt Palmer East
- ☐ **Structural Analysis Delivered**
- ☐ **Q3 Diamond Drilling - Results**

### PHASE 2 – Q1 2025

- ☐ Follow up of all Mt Palmer Prospects

### PHASE 3 – Q2 2025

- ☐ Mt Palmer site – deeper drilling
- ☐ Quotations for drilling at Meiers Find,  
El Dorado, Bryant Lode & Mt Palmer East



### Mt Palmer Gold Mine Project Strategic Phases - 2024-25

### PHASE 4 – Q3 2025

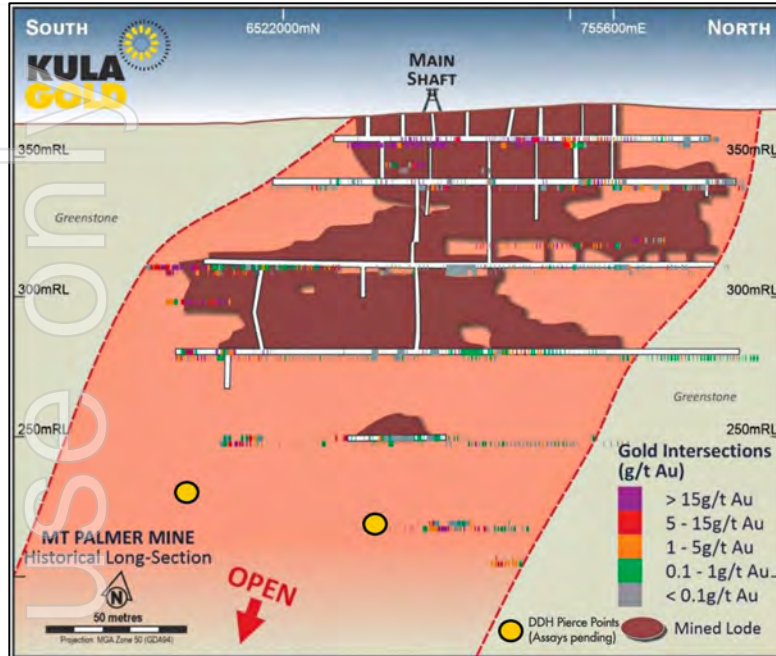
- ☐ Mt Palmer Gold Mine  
JORC Resource

**ASX / KGD**



# MT PALMER GOLD MINE – Main Lode

- Historically awesome Gold Production



150,000 oz Gold Production 1937-44

- ❑ Historical Results up until mine's suspension in 1944
  - 15.9g/t ROM Gold Production
  - Some stopes up to 100g/t Gold
  - Only mined to 6th level (160m from surface)
  - Production ended due to WW2 impact
  - Shortage of labour/materials/water ingress/new gold tax prevented reopening

ASX Announcement Reference: RC Drilling Commences at the Historic Mt Palmer Gold Mine, dated 17 July 2024.

**ASX / KGD**

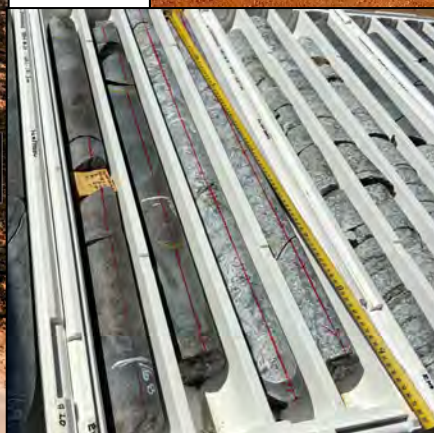
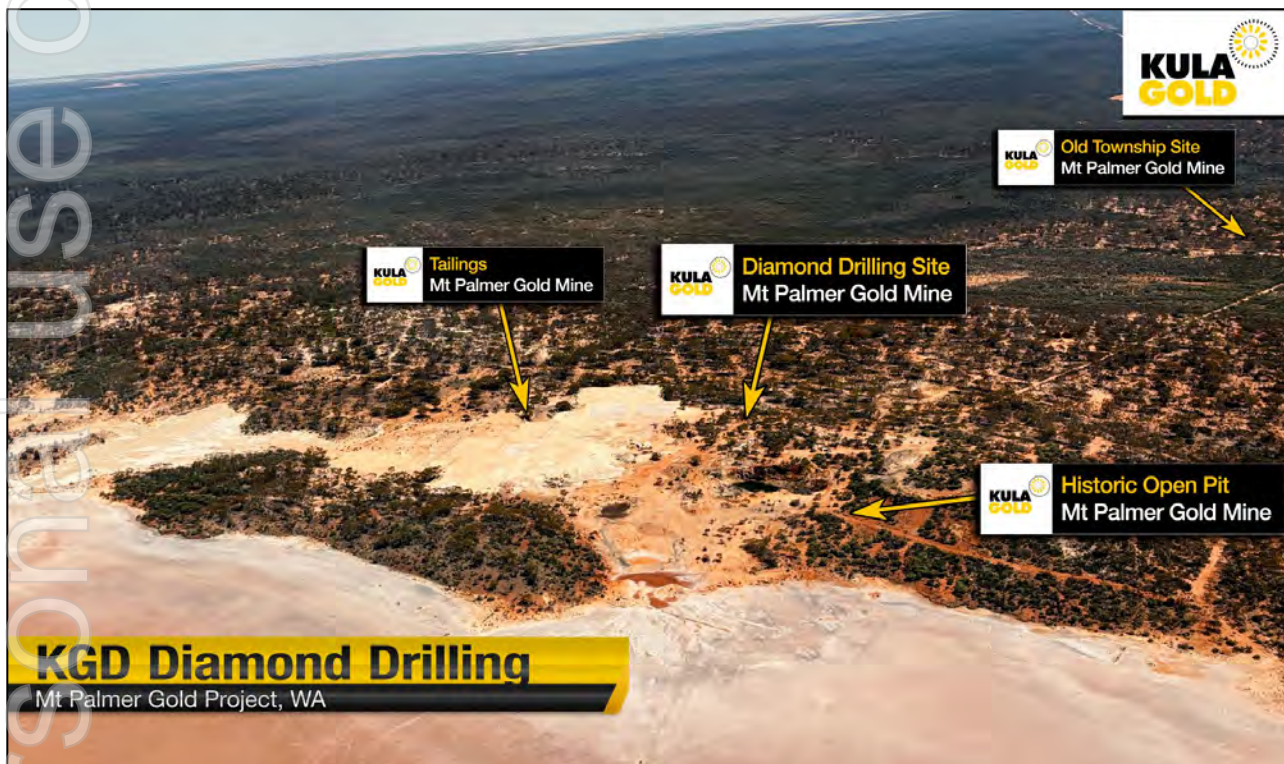


# MT PALMER GOLD MINE – Drilling Programme Sept 2024

## - Gold Mineralisation

Kula Gold completed the diamond tails from our maiden RC and Diamond Programme in Q3 2024.

This resulted in the new Bryant Lode (which will be followed up)



### DIAMOND DRILLING COMPLETED AT MT PALMER

New Prospects advanced at  
El Dorado 6m @ 8.3g/t Gold  
Meiers Find 1m @ 9.2g/t Gold

**ASX / KGD**



# MT PALMER GOLD MINE – Exploration Q4 2024

- The Kula team at work



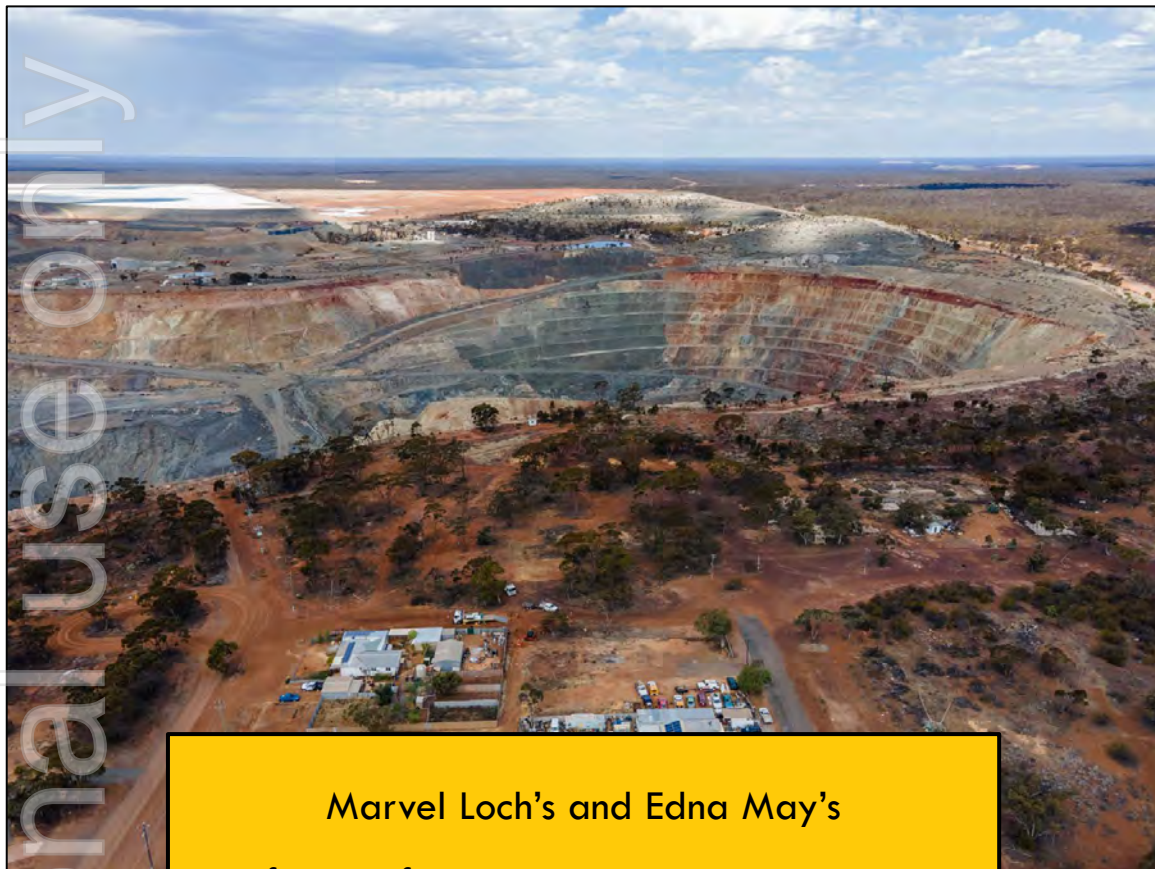
Kula Gold continues to conduct field work on its growing Mt Palmer Gold Mine Prospects.

ASX / KGD



# MT PALMER – Golden Horse Minerals roaming in area

- M&A and local infrastructure



Marvel Loch's and Edna May's significant infrastructure are attractive to more companies than just Kula Gold.

- ❑ Kula notes with interest the activities of Golden Horse Minerals (TSX-V:GHML, Reserved ASX:GHM) in the Southern Cross Goldfields - to the north-west of the Mt Palmer Gold Mine tenements.
- ❑ Post IPO Market Capitalisation of \$37m
- ❑ Golden Horse Minerals are on the acquisition trail with recent JV and purchase agreements signed with multiple ASX listed companies\*.
- ❑ Similar to Golden Horse Minerals, Kula is open to toll treating with existing Southern Cross infrastructure.

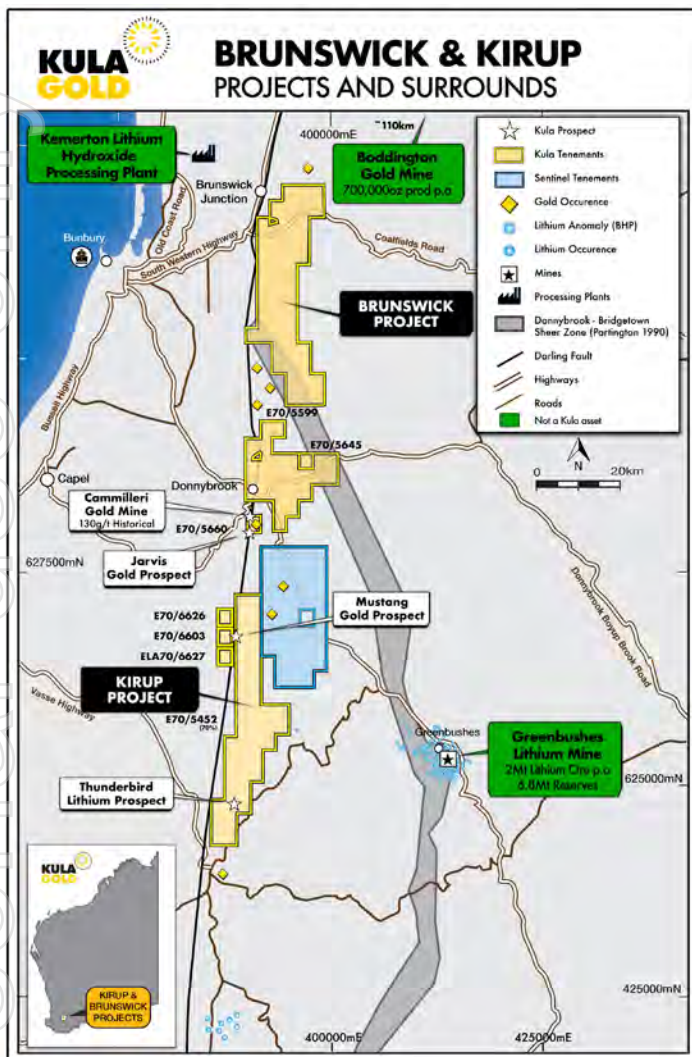
\*Ref: Everest Minerals (ASX:EMR) – 3 September 2024

\*Ref: Torque Metals (ASX:TOR) - 1 October 2024

**ASX / KGD**

# BRUNSWICK AND KIRUP PROJECTS

## - Multiple Gold Prospects



❑ The Brunswick and Kirup Projects presents Kula with exciting Gold potential at a number of prospects.

- Mustang Gold Prospect
- Cammilleri Gold Mine
- Jarvis Gold Prospect
- Thunderbird Lithium Prospect

❑ Near the Greenbushes Mine, the world's largest hard rock lithium mine, and existing infrastructure

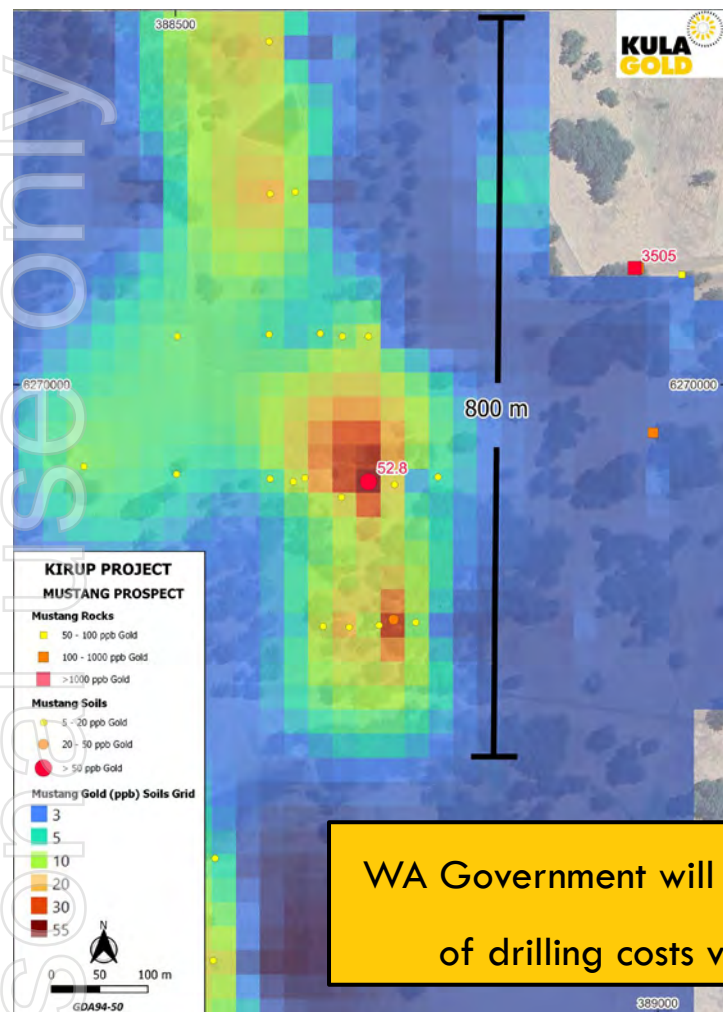
This region has significant major companies focusing their attention on Gold, Copper and Lithium potential

**ASX / KGD**



# KIRUP PROJECT - Mustang Gold Prospect

- EIS approved



WA Government will fund 50%  
of drilling costs via EIS

- ☐ The Mustang Gold Prospect within the Kirup Project (JV - 70% ownership).
- ☐ Successful WA Govt Department of Mines Exploration Incentive Scheme (EIS) application.
- ☐ EIS peer reviewed and given stamp of approval by WA Government.
- ☐ Payment of up to \$180,000 for a 50% reimbursement of direct drilling and mobilisation costs.
- ☐ Reconnaissance mapping, rock chipping sampling of outcrop and soil sampling to follow up the 3.5g/t gold (Au) along a series of magnetic structures of up to 2km long and gold geochemistry to date of 800m.

ASX Announcement Reference: EIS Co-Funding for Mustang Gold Prospect, dated 24 October 2024.

**ASX / KGD**



# SUMMARY

- A Golden Opportunity



*The Mt Palmer Gold Mine Region is a rare underexplored jewel in the goldfields...*

*Presenting Kula and new shareholders with a golden opportunity* 

**ASX / KGD**