

Further High Grade Uranium In Soil Results From Portland Creek

Assays extend the Talus soil anomaly by ~340% and define several new anomalies within the structural corridor significantly increasing the scale and prospectivity of the project

Highlights

Extraordinarily high soil uranium assays now define a ~800m x 100 m zone coincident with a north-south shear and three major converging secondary faults. The zone remains open to the east and west with a **peak assay result of 7.5% U₃O₈.**

New high-grade uranium soil assays include:

IRS0755: **4,056 ppm U₃O₈**

IRS0774: **2,193 ppm U₃O₈**

IRS0571: **3,679 ppm U₃O₈**

IRS0788: **1,981 ppm U₃O₈**

IRS0572: **3,007 ppm U₃O₈**

IRS1174: **1,604 ppm U₃O₈**

IRS0567: **2,901 ppm U₃O₈**

IRS0772: **1,164 ppm U₃O₈**

IRS0783: **2,264 ppm U₃O₈**

IRS1100: **1,116 ppm U₃O₈**

Additional geochemical anomalism identified in the North and South is **highly encouraging as it indicates potential for additional undiscovered uranium deposits to exist within the project**

These exceptional follow up soil geochemistry results at Portland Creek significantly **increase the prospectivity of the project by adding numerous additional drill targets to the exploration portfolio**

UAV magnetic survey planned to commence late October will help determine what litho-structural controls exist underneath the numerous and large new soil anomalies identified in the North and South

Infini Resources Ltd (ASX: I88, "Infini" or the "Company") is delighted to announce the results of its major follow up soil sampling program at its highly prospective and 100% owned Portland Creek Uranium Project in Newfoundland, Canada. These assay results mark the completion of the Company's follow up exploration program (Figure 1 and refer to ASX announcement 16 September 2024).

Infini's Managing Director and CEO, Charles Armstrong said: "These follow up soils are incredibly exciting, with exploration to date indicating that Portland Creek may be host to a large, high-grade uranium system. These results increase the prospectivity of the ground significantly and further increase our confidence that the source of the primary uranium mineralisation is close by. The initial zone has now grown from an original ~235m x 100m to ~800m x 100m (340% increase) which is an outstanding result.

Furthermore, we now have additional grouped uranium soil anomalies located ~500m to the North and ~1.5km to the South. We are prioritizing the Talus high grade zone as our top maiden drill target and now we can use this data to finalise our diamond drill plans."

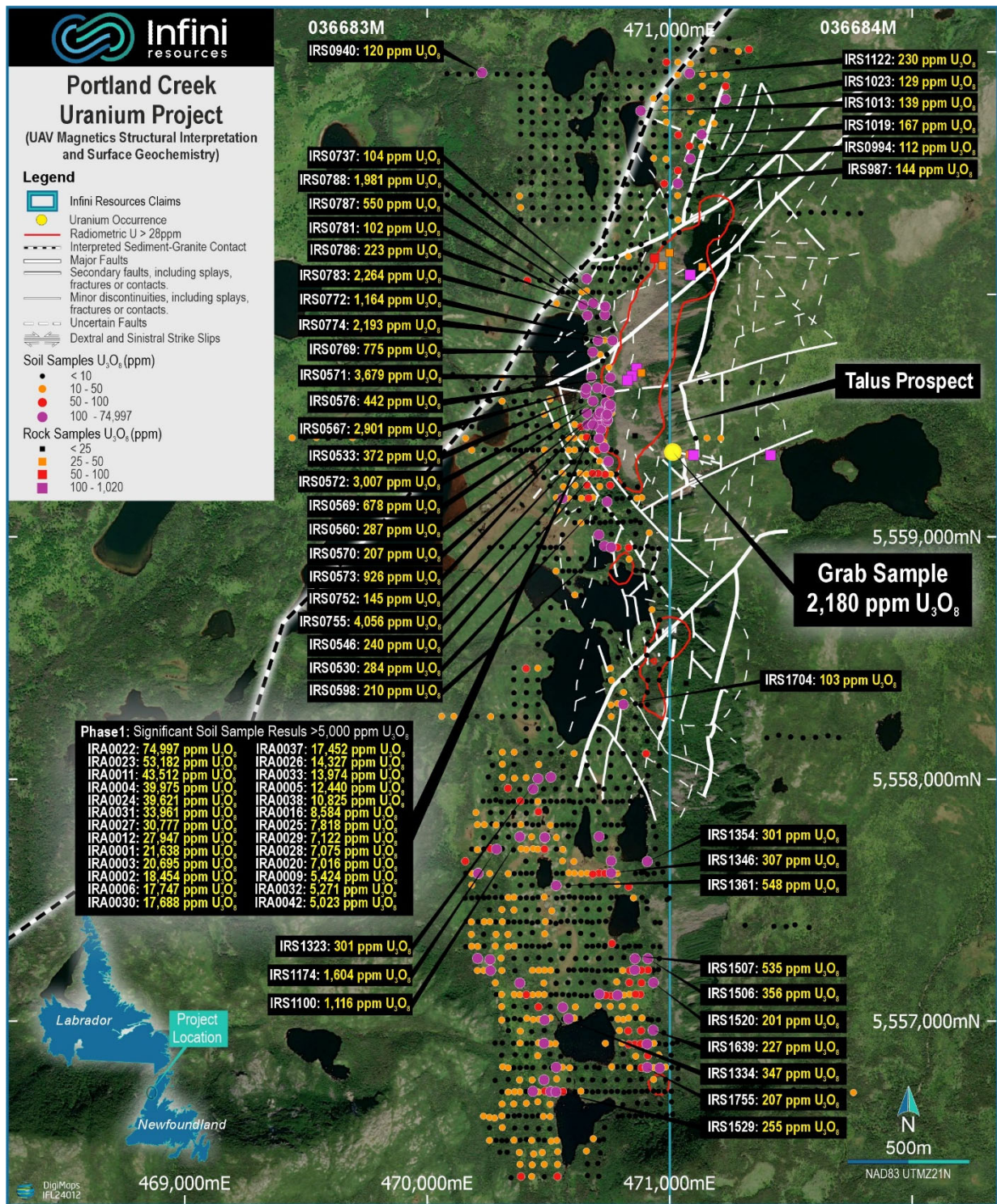


Figure 1 The Talus Uranium Prospect depicting the location of the incredibly high-grade soil samples and new anomalies in the north and south. NB: radon gas anomalies and rock samples are not contained here and retained in Appendix 2 to better display soil anomalism.

Soil Sampling Results

A total of 1,138 soils (excluding QAQC) were collected in east-west traverse lines across the strike of interpreted UAV magnetic structures and known historical radon gas/radiometric anomalies. Sample site locations were predetermined on a 50m line spacing with 25-50m distance between sample points. The zone of high-grade soil anomalism, **peak assay result of 7.5% U₃O₈**, has now **grown at the Talus Prosect by 340% to approximately 800m x 100m** (Figure 2 and Appendix 1 Table 1). The litho-structural setting of this large uranium soil anomaly includes a north south shear zone crosscutting an interpreted de-magnetized granite within three large converging secondary faults. This is considered a highly favourable setting for potential high grade uranium mineralisation to occur given the altered granite is likely thrust over the top of the neighbouring sedimentary group at depth which may contain reduced graphitic horizons. Reduced lithologies can be important hosts to high grade uranium mineralisation where oxidised uranium fluids have travelled through deep seated faults that tap into the mantle.

Two additional geochemical anomaly groups have been defined ~500m to the North and ~1.5km to the South respectively (Figure 1 and Appendix 1 Table 1). The northern anomaly is approximately **500m x 250m in size with a peak result of 230 ppm U₃O₈**. The southern group contains a large anomaly of **600m x 250m in size with a peak result of 548 ppm U₃O₈**. These new areas that have been identified are highly significant as they could be indicative of undiscovered uranium deposits separate to the high priority target zone within the Talus prospect.

For personal use only

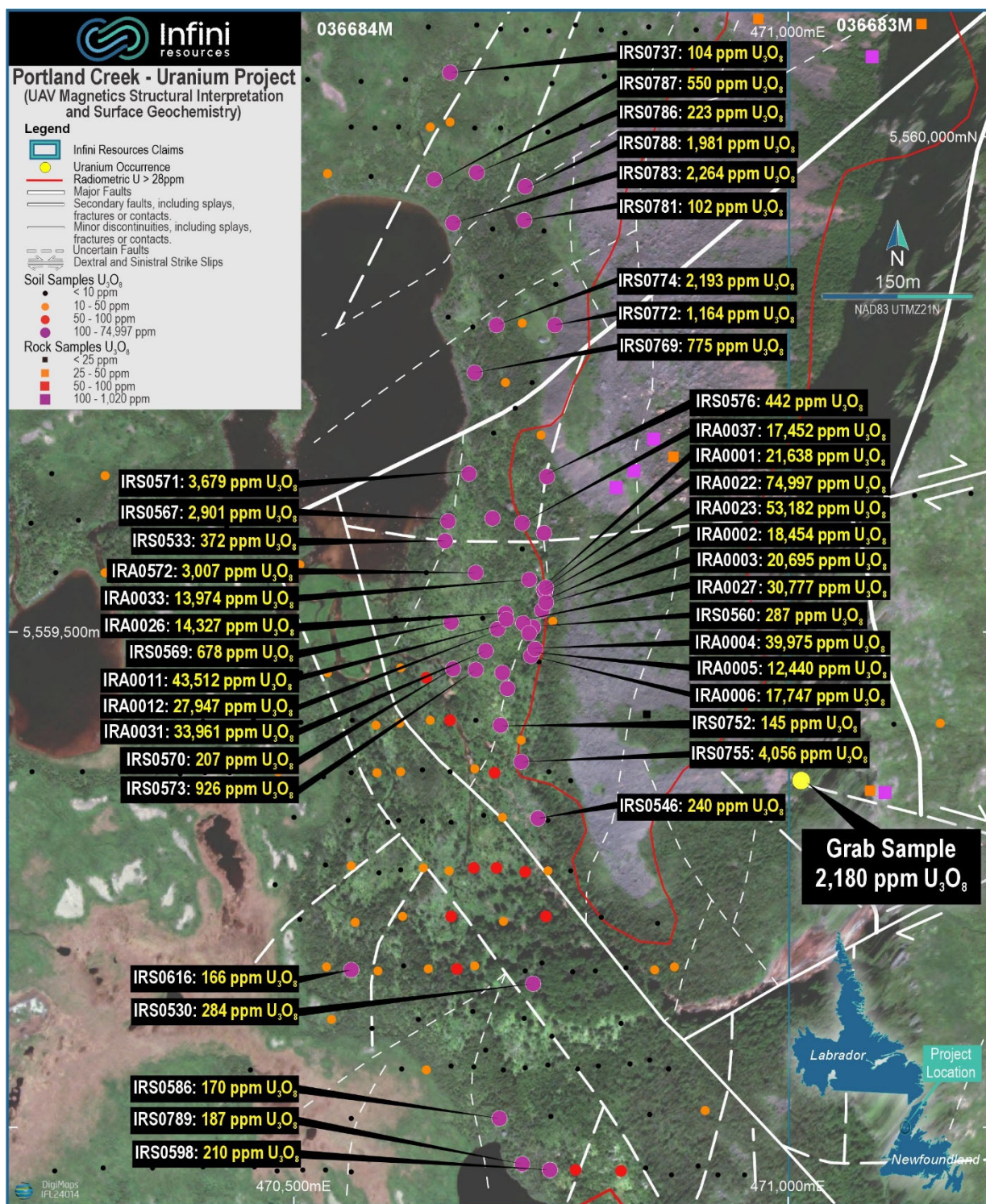


Figure 2 Inset map view of the highly anomalous ~800m x 100m uranium soil anomaly at the Talus Prospect. NB: Th, radon gas anomalies and rock samples are not contained here and retained in Appendix 2 to better display soil anomalism.

Upcoming Exploration Activities

Follow up exploration activities include finalising the fence line drill hole locations, submission of a drill permit with the Newfoundland mines department, an expanded UAV geophysical survey, expanded UAV litho-structural interpretation and ongoing geochemical desktop studies for vectoring purposes.

About Portland Creek Uranium Project

The Portland Creek Project covers an area of 149 km² and is situated in the Precambrian Long-Range Complex of the Humber Tectonic – Stratigraphic zone. These members include metaquartzite and a suite of paragneisses, intruded by leucocratic pink granite, which have likely been thrust westwards over Palaeozoic carbonate-dominant sediments. The Claims are situated over a large regional uranium anomaly that was identified in the 1970’s by a Newfoundland government stream sediment sampling program. There was initially one uranium showing on the property as listed in the Newfoundland Mineral Deposit Index inventory with 2,180 ppm U₃O₈ (refer Prospectus dated 30 November 2023). Since listing, the company has now verified and defined a high-grade soil anomaly at the Talus prospect measuring ~800m x 100m with a peak result of 74,997ppm U₃O₈.

[END]

Release authorised by the Board of Infini Resources Ltd.

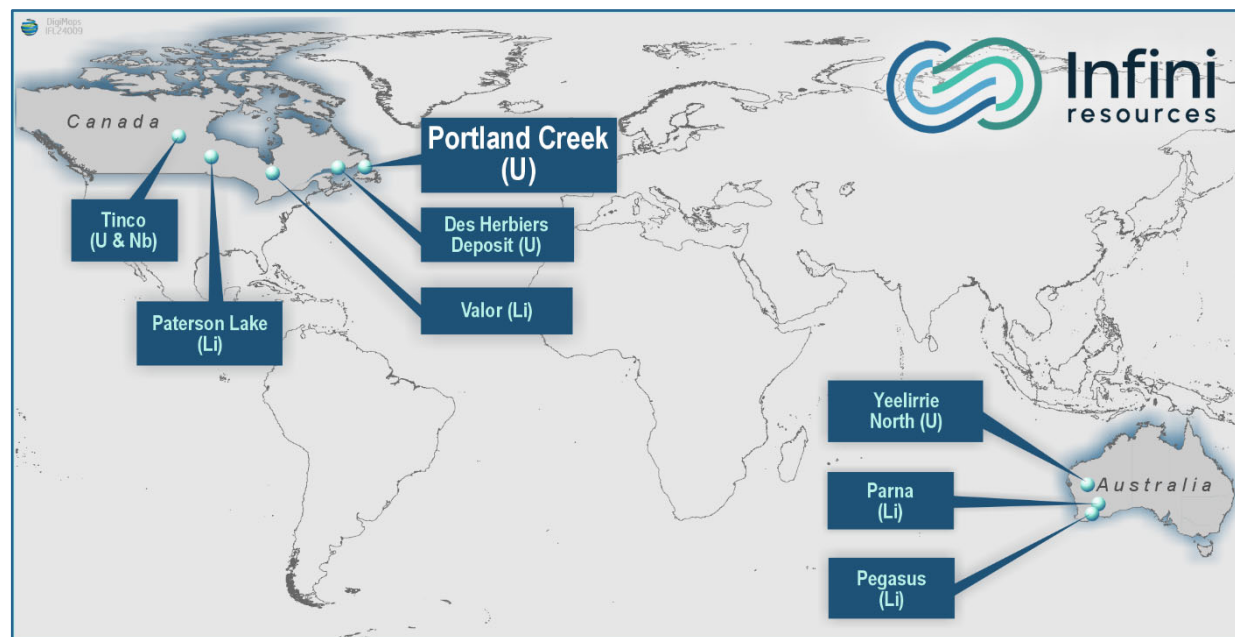
Contacts

Charles Armstrong
 Managing Director and CEO
 P: +61 (08) 9465 1051

About Infini Resources Ltd (ASX: I88)

Infini Resources Ltd is an Australian energy metals company focused on mineral exploration in Canada and Western Australia for uranium and lithium. The company has a diversified and highly prospective portfolio of assets that includes greenfield and more advanced brownfield projects. The company’s mission is to increase shareholder wealth through exploration growth and mine development.

JOR 2012 Mineral Resource Deposit	JORC 2012 Classification	Tonnes and Grade
Des Herbiers (U)	Inferred Combined Resource	162 Mt @ 123ppm U ₃ O ₈ (43.95mlb)



For personal use only

Competent Person's Statement

The information contained in this announcement that relates to exploration results for the Portland Creek Uranium Project is based on, and fairly represents, information and supporting documentation prepared by Mr Charles Armstrong, who is a member of the Australasian Institute of Mining and Metallurgy (AusIMM) and the Society of Economic Geologists (SEG). Mr Armstrong has sufficient experience that is relevant to the style of mineralisation and type of deposit under consideration, and to the activity being undertaken to qualify as a Competent Person, as defined in the JORC 2012 edition of the "Australasian Code for Reporting of Mineral Resources and Ore Reserves". Mr Armstrong has 9 years' experience as an exploration geologist and is the Managing Director and CEO of Infini Resources Ltd. Mr Armstrong consents to the inclusion in this report of the matters based on this information in the form and context in which they appear. Mr. Armstrong holds securities in the Company.

Compliance Statement

This report contains information on the Company's Projects extracted from the Company's Prospectus dated 30 November 2023 and released to the ASX market announcements platform on 10 January 2024, and announcements dated 15 January 2024, 29 January 2024, 19 February 2024, 29 February 2024 3 May 2024, 28 May 2024, 3 June 2024, 13 June 2024, 1 July 2024, 10 July 2024 and 22 July 2024 reported in accordance with the 2012 edition of the "Australian Code for Reporting of Exploration Results, Mineral Resources and Ore Reserves" (JORC Code). The original market announcements are available to view on www.infiniresources.com.au and www.asx.com.au. The Company is not aware of any new information or data that materially affects the information included in the original market announcement.

This report contains information regarding the Des Herbiere Mineral Resources Estimate extracted from the Company's Prospectus dated 30 November 2023 and released to the ASX market announcements platform on 10 January 2024, reported in accordance with the 2012 edition of the "Australian Code for Reporting of Exploration Results, Mineral Resources and Ore Reserves" (JORC Code). The Company confirms that it is not aware of any new information or data that materially affects the information included in any original announcement and that all material assumptions and technical parameters underpinning the estimates in the original market announcement continue to apply and have not materially changed. The original market announcements are available to view on www.infiniresources.com.au and www.asx.com.au.

Forward Looking Statements

This announcement may contain certain forward-looking statements and projections. Such forward looking statements/projections are estimates for discussion purposes only and should not be relied upon. Forward looking statements/projections are inherently uncertain and may therefore differ materially from results ultimately achieved. Infini Resources Limited does not make any representations and provides no warranties concerning the accuracy of the projections and disclaims any obligation to update or revise any forward-looking statements/projects based on new information, future events or otherwise except to the extent required by applicable laws. While the information contained in this report has been prepared in good faith, neither Infini Resources Limited or any of its directors, officers, agents, employees or advisors give any representation or warranty, express or implied, as to the fairness, accuracy, completeness or correctness of the information, opinions and conclusions contained in this announcement.

Appendix 1 – Current Exploration Results

Table 1: Recently completed soil sample assay results located within this announcement. All survey sites are projected in NAD83 UTM Zone 21N.

Sample ID	Easting (m)	Northing (m)	U ₃ O ₈ (ppm)	Th (ppm)	As (ppm)	Co (ppm)	Ni (ppm)	Pb 204 (ppm)	Pb 206 (ppm)	Pb 207 (ppm)
IRS0562	470603	5559514	3	1	2	1	6	0.55	10.55	9.01
IRS0563	470608	5559464	43	12	1	2	3	0.21	6.46	3.45
IRS0564	470634	5559560	5	6	1	1	3	0.39	7.74	6.13
IRS0565	470634	5559454	68	2	2	6	5	0.46	10.15	7.73
IRS0567	470656	5559612	2901	4	1	1	5	0.25	4.87	3.90
IRS0569	470659	5559510	678	9	0	1	3	0.05	1.40	0.74
IRS0570	470661	5559463	208	4	2	6	3	0.41	9.47	6.74
IRS0571	470677	5559660	3679	3	1	2	5	0.12	4.45	1.96
IRS0572	470684	5559560	3007	6	0	1	4	0.06	1.98	1.06
IRS0573	470684	5559462	926	4	0	1	3	0.19	5.77	3.17
IRS0574	470750	5559699	29	1	0	0	1	0.02	0.49	0.33
IRS0576	470756	5559657	442	3	1	0	1	0.17	3.35	2.67
IRS0577	470762	5559511	16	1	1	0	2	0.70	13.20	11.20

Sample ID	Easting (m)	Northing (m)	U ₃ O ₈ (ppm)	Th (ppm)	As (ppm)	Co (ppm)	Ni (ppm)	Pb 204 (ppm)	Pb 206 (ppm)	Pb 207 (ppm)
IRS0578	470748	5559470	6	0	1	0	1	0.09	1.63	1.34
IRS0579	470538	5556410	44	2	0	0	2	0.19	5.75	3.10
IRS0580	470483	5556410	35	3	1	1	4	0.37	8.91	5.87
IRS0581	470433	5556408	24	4	1	1	3	0.25	6.69	4.00
IRS0582	470383	5556410	42	8	1	1	3	0.44	13.60	7.50
IRS0583	470538	5556462	47	1	0	0	2	0.24	7.88	4.03
IRS0584	470475	5556459	22	17	1	2	5	0.24	7.14	3.90
IRS0585	470439	5556453	32	6	1	1	7	0.28	7.44	4.41
IRS0586	470708	5559009	171	2	1	1	4	0.11	2.70	1.72
IRS0587	470760	5559011	3	4	2	2	34	0.30	5.70	4.72
IRS0589	470860	5559013	2	1	1	0	8	0.22	4.20	3.44
IRS0590	470916	5559017	18	5	1	1	4	0.15	3.26	2.40
IRS0591	470956	5558952	1	0	1	0	5	0.05	1.08	0.85
IRS0592	470929	5558952	1	0	1	0	5	0.20	3.66	3.06
IRS0593	470909	5558961	1	0	2	1	10	0.32	5.92	4.98
IRS0594	470882	5558952	1	0	2	0	7	0.25	4.59	3.86
IRS0595	470856	5558959	2	5	1	1	4	0.08	1.59	1.18
IRS0596	470831	5558956	89	2	1	0	3	0.50	19.10	9.02
IRS0597	470785	5558957	92	1	2	1	9	0.41	10.65	6.97
IRS0598	470759	5558957	210	5	1	1	4	0.36	10.90	6.22
IRS0600	470712	5559208	49	2	9	47	5	0.89	18.20	14.70
IRS0601	470755	5559213	53	1	8	23	5	0.75	15.00	11.90
IRS0602	470811	5559212	2	0	2	2	4	0.44	8.77	7.24
IRS0603	470868	5559206	0	0	1	0	4	0.53	10.20	8.75
IRS0604	470885	5559162	10	4	1	0	3	0.26	5.62	4.33
IRS0605	470865	5559159	33	2	7	36	5	1.26	25.10	20.60
IRS0606	470836	5559161	2	0	1	0	4	0.40	7.65	6.54
IRS0607	470805	5559158	1	0	1	1	5	0.29	5.59	4.76
IRS0608	470782	5559157	9	5	2	11	8	0.38	10.10	6.46
IRS0609	470751	5559166	4	2	1	1	6	0.34	6.86	5.66
IRS0610	470734	5559158	1	1	1	1	4	0.42	8.16	6.91
IRS0611	470683	5559163	19	4	2	15	3	0.40	9.24	6.76
IRS0612	470665	5559160	76	0	1	3	4	0.24	6.09	4.07
IRS0613	470636	5559160	47	6	1	3	4	0.23	6.79	3.98
IRS0614	470611	5559163	8	1	1	1	5	0.21	4.55	3.33
IRS0615	470585	5559158	21	1	0	0	2	0.22	6.18	3.59
IRS0616	470558	5559159	116	0	1	1	7	0.14	3.50	2.19
IRS0617	470533	5559162	10	0	0	0	4	0.11	2.92	1.76
IRS0618	470634	5559058	16	0	1	1	8	0.13	2.69	2.10
IRS0619	470609	5559059	4	0	1	0	7	0.07	1.58	1.15
IRS0620	470659	5559062	8	0	1	1	5	0.21	4.19	3.32
IRS0621	470682	5559061	5	1	1	0	6	0.11	2.42	1.71
IRS0622	470712	5559058	4	1	2	0	3	0.49	9.46	8.03
IRS0623	470734	5559060	1	0	1	0	2	0.24	4.65	3.92

For personal use only

Sample ID	Easting (m)	Northing (m)	U ₃ O ₈ (ppm)	Th (ppm)	As (ppm)	Co (ppm)	Ni (ppm)	Pb 204 (ppm)	Pb 206 (ppm)	Pb 207 (ppm)
IRS0624	470456	5559058	1	4	0	1	2	0.10	2.00	1.52
IRS0626	470159	5559560	1	2	1	1	4	0.20	3.98	3.20
IRS0627	470184	5559607	1	1	1	0	3	0.34	6.58	5.58
IRS0628	470234	5559610	5	1	2	1	3	0.23	5.07	3.71
IRS0629	470282	5559613	2	2	1	1	3	0.32	6.35	5.24
IRS0630	470332	5559611	2	1	1	1	3	0.19	3.52	2.92
IRS0631	470381	5559610	2	1	1	0	3	0.41	8.13	6.73
IRS0632	470432	5559607	2	11	1	1	3	0.31	6.24	5.17
IRS0634	470408	5559658	1	3	1	0	3	0.21	4.13	3.33
IRS0635	470355	5559657	1	1	1	1	2	0.20	3.86	3.12
IRS0636	470309	5559658	13	0	0	1	6	0.07	1.94	1.20
IRS0637	470255	5559660	1	0	1	0	2	0.04	0.87	0.65
IRS0638	470206	5559655	2	14	1	1	2	0.26	5.10	4.21
IRS0639	470150	5559660	6	8	4	2	8	0.54	14.35	9.08
IRS0640	470106	5559670	4	1	1	0	2	0.16	3.95	2.56
IRS0641	470057	5559660	2	2	1	0	5	0.09	1.70	1.34
IRS0642	470009	5559656	3	0	1	0	4	0.11	2.94	1.81
IRS0643	469958	5559661	2	1	1	0	4	0.15	3.07	2.39
IRS0644	469908	5559663	2	1	1	0	4	0.15	2.97	2.32
IRS0645	469859	5559662	2	13	1	1	6	0.27	5.37	4.37
IRS0646	470506	5559210	1	5	0	1	4	0.03	0.76	0.51
IRS0647	470562	5559207	11	2	1	1	5	0.14	4.19	2.31
IRS0648	470610	5559213	46	9	3	6	7	0.35	8.52	5.84
IRS0649	470659	5559213	53	8	4	20	6	0.37	8.87	6.11
IRS0651	470537	5556360	60	1	1	2	10	0.10	3.02	1.69
IRS0652	470483	5556359	9	2	1	1	8	0.37	7.57	6.08
IRS0653	470431	5556360	23	2	1	1	9	0.37	8.03	6.22
IRS0654	470387	5556360	55	1	1	0	4	0.15	4.86	2.53
IRS0655	470346	5556355	2	1	1	1	5	0.39	7.61	6.41
IRS0656	470330	5556460	10	2	1	1	12	0.24	5.42	3.96
IRS0657	470300	5556460	2	0	2	1	15	0.65	12.60	10.80
IRS0658	470380	5556459	16	1	0	1	7	0.23	6.00	3.71
IRS0659	470507	5559409	2	2	1	0	9	0.08	1.76	1.24
IRS0660	470559	5559411	7	2	0	0	3	0.05	1.38	0.86
IRS0661	470607	5559408	24	1	0	1	6	0.14	5.45	2.39
IRS0662	470630	5559361	3	0	0	0	3	0.07	1.81	1.07
IRS0663	470608	5559359	29	3	2	2	8	0.31	7.93	5.23
IRS0664	470584	5559358	39	1	1	4	7	0.42	8.68	7.02
IRS0665	470558	5559358	3	0	1	1	12	0.27	4.71	4.32
IRS0667	470530	5559354	2	2	1	1	15	0.06	1.33	1.06
IRS0668	470484	5559359	10	1	0	1	12	0.09	1.99	1.52
IRS0669	470500	5559313	4	0	1	1	11	0.09	1.69	1.48
IRS0670	470555	5559310	1	0	1	2	14	0.05	0.96	0.79
IRS0671	470606	5559310	1	2	1	1	9	0.34	5.95	5.52

For personal use only

Sample ID	Easting (m)	Northing (m)	U ₃ O ₈ (ppm)	Th (ppm)	As (ppm)	Co (ppm)	Ni (ppm)	Pb 204 (ppm)	Pb 206 (ppm)	Pb 207 (ppm)
IRS0672	470631	5559262	17	1	0	1	8	0.23	6.56	3.91
IRS0673	470608	5559260	2	0	1	1	7	0.56	10.10	9.04
IRS0674	470586	5559257	2	2	1	1	5	0.43	7.72	6.97
IRS0676	470558	5559264	33	5	3	5	5	0.40	8.77	6.51
IRS0677	470532	5559265	1	2	1	3	12	0.23	4.10	3.78
IRS0678	470481	5559245	1	0	1	1	7	0.11	2.04	1.84
IRS0679	470458	5559359	1	4	1	1	2	0.08	1.52	1.26
IRS0680	470435	5559358	0	0	2	0	3	0.24	4.17	3.88
IRS0681	470410	5559358	1	1	1	1	2	0.13	2.43	2.10
IRS0682	470385	5559357	0	0	2	0	1	0.21	3.56	3.31
IRS0683	470361	5559359	3	0	0	0	3	0.12	2.83	1.96
IRS0684	470335	5559360	3	2	1	0	2	0.19	3.53	3.11
IRS0685	470286	5559359	7	2	1	0	2	0.18	4.00	2.97
IRS0686	470235	5559359	2	0	1	0	2	0.06	1.01	0.88
IRS0687	470184	5559358	16	0	1	0	5	0.15	3.36	2.48
IRS0688	470408	5559410	1	0	0	0	5	0.02	0.47	0.39
IRS0689	470459	5559412	1	1	1	0	2	0.08	1.39	1.25
IRS0690	470453	5559459	1	2	1	0	2	0.06	1.04	0.89
IRS0691	470409	5559459	1	1	0	1	2	0.04	0.74	0.60
IRS0692	470358	5559460	1	3	1	0	1	0.35	6.11	5.60
IRS0693	470383	5559506	1	6	2	0	3	0.14	2.60	2.29
IRS0694	470434	5559508	1	0	0	0	2	0.03	0.58	0.44
IRS0695	470482	5559506	23	1	1	0	4	0.08	1.87	1.31
IRS0696	470507	5559459	1	1	1	1	2	0.69	12.15	11.70
IRS0697	470534	5559459	21	0	2	1	2	0.43	7.86	6.85
IRS0698	470408	5558960	1	0	2	0	3	0.10	1.71	1.55
IRS0700	470357	5558959	0	0	0	0	2	0.04	0.69	0.55
IRS0701	470661	5556364	7	3	0	1	2	0.16	3.79	2.57
IRS0702	470708	5556361	1	0	1	1	4	0.28	5.26	4.42
IRS0703	470704	5556414	9	7	1	2	5	0.23	5.72	3.62
IRS0704	470661	5556412	2	0	1	0	2	0.21	4.23	3.31
IRS0705	470657	5556465	12	1	1	1	3	0.17	4.20	2.73
IRS0706	470714	5556457	9	3	1	4	9	0.28	8.08	4.64
IRS0707	470685	5556516	17	4	1	5	8	0.14	3.62	2.30
IRS0708	470709	5556508	6	2	0	2	3	0.21	4.61	3.36
IRS0709	470728	5556513	8	4	1	1	2	0.22	4.83	3.43
IRS0710	470732	5556562	1	3	1	1	1	0.24	4.56	3.74
IRS0711	470787	5556607	0	0	1	0	3	0.50	9.47	8.38
IRS0712	470805	5556610	0	0	1	1	2	0.35	6.47	5.46
IRS0713	470834	5556610	0	1	0	3	6	0.21	3.85	3.18
IRS0714	470859	5556610	4	2	1	8	6	0.25	5.24	4.03
IRS0715	470884	5556610	2	1	3	6	9	0.47	9.28	7.41
IRS0716	470908	5556611	1	1	2	2	3	0.30	5.96	4.73
IRS0717	470930	5556609	2	1	1	2	5	0.50	9.33	8.26

For personal use only

Sample ID	Easting (m)	Northing (m)	U ₃ O ₈ (ppm)	Th (ppm)	As (ppm)	Co (ppm)	Ni (ppm)	Pb 204 (ppm)	Pb 206 (ppm)	Pb 207 (ppm)
IRS0718	470506	5559568	22	9	0	0	1	0.12	4.40	2.07
IRS0719	470461	5559561	1	1	2	0	1	0.20	3.78	3.13
IRS0720	470407	5559558	1	3	1	1	1	0.22	4.17	3.41
IRS0721	470359	5559559	1	1	2	1	24	0.09	1.82	1.43
IRS0722	470309	5559560	36	7	1	2	2	0.15	4.26	2.50
IRS0723	470259	5559560	2	10	0	1	4	0.29	5.53	4.55
IRS0724	470207	5559557	2	2	1	1	3	0.28	5.72	4.44
IRS0726	470638	5560010	21	0	0	0	3	0.05	1.30	0.77
IRS0727	470658	5560015	27	0	0	1	2	0.11	2.63	1.77
IRS0728	470683	5560009	4	4	1	1	3	0.18	4.72	2.87
IRS0729	470709	5560009	2	2	2	1	5	0.50	9.78	8.08
IRS0730	470757	5560005	1	1	1	1	4	0.06	1.17	0.87
IRS0731	470791	5560011	2	5	1	0	7	0.39	7.61	6.12
IRS0732	470866	5560057	1	5	2	1	3	0.50	9.61	8.09
IRS0734	470814	5560061	1	4	0	1	4	0.03	0.77	0.51
IRS0735	470761	5560054	0	0	1	0	3	0.08	1.50	1.24
IRS0736	470715	5560059	1	0	2	0	2	0.11	2.05	1.72
IRS0737	470658	5560065	104	0	1	1	4	0.10	2.34	1.50
IRS0738	470613	5560058	1	1	1	0	1	0.37	6.80	5.75
IRS0739	470568	5560056	1	0	1	2	3	0.29	5.30	4.42
IRS0740	470514	5560058	2	5	1	1	1	0.06	1.59	1.00
IRS0741	470465	5560058	2	0	1	1	1	0.15	3.01	2.29
IRS0742	470413	5560057	91	3	5	2	5	0.12	3.74	1.95
IRS0743	470367	5560062	1	1	1	0	2	0.03	0.66	0.54
IRS0744	470312	5560058	1	2	1	1	2	0.42	7.76	6.42
IRS0745	470808	5556865	8	3	1	5	11	0.31	6.24	4.83
IRS0746	470860	5556856	39	1	2	1	5	0.27	5.04	4.17
IRS0747	470910	5556858	88	0	1	1	6	0.27	5.22	4.12
IRS0748	470955	5556861	31	2	1	2	4	0.23	5.09	3.63
IRS0749	471006	5556860	2	1	1	1	2	0.51	9.30	7.83
IRS0751	470658	5559411	70	11	2	6	5	0.40	10.20	6.28
IRS0752	470709	5559406	145	6	0	1	2	0.20	6.54	3.23
IRS0753	470780	5559350	1	0	0	0	1	0.03	0.56	0.44
IRS0754	470758	5559359	2	3	1	0	2	0.53	9.83	8.00
IRS0755	470730	5559369	4056	6	1	0	2	0.33	15.05	5.69
IRS0756	470703	5559358	64	2	3	8	4	0.62	13.00	9.89
IRS0757	470683	5559362	24	15	1	3	4	0.19	5.97	3.13
IRS0758	470658	5559359	4	1	0	0	0	0.06	1.66	1.00
IRS0759	470659	5559308	2	2	2	1	2	0.52	9.76	7.98
IRS0760	470711	5559313	33	5	3	11	5	0.37	8.30	5.74
IRS0761	470757	5559310	1	0	2	0	2	0.54	10.15	8.26
IRS0762	470780	5559259	1	0	1	1	3	0.39	7.17	6.00
IRS0763	470757	5559259	49	2	4	25	5	0.63	13.00	9.78
IRS0764	470734	5559258	80	6	2	54	5	0.24	6.43	3.85

For personal use only

Sample ID	Easting (m)	Northing (m)	U ₃ O ₈ (ppm)	Th (ppm)	As (ppm)	Co (ppm)	Ni (ppm)	Pb 204 (ppm)	Pb 206 (ppm)	Pb 207 (ppm)
IRS0765	470705	5559262	65	3	3	24	5	0.57	13.75	8.85
IRS0767	470682	5559262	57	1	4	10	5	0.78	16.40	12.60
IRS0768	470657	5559259	50	6	6	11	5	0.65	14.45	11.15
IRS0769	470683	5559762	775	3	1	0	1	0.03	0.59	0.46
IRS0770	470714	5559752	27	0	1	1	2	0.25	5.67	4.19
IRS0771	470741	5559752	2	4	1	0	1	0.30	6.15	5.15
IRS0772	470764	5559810	1164	1	1	0	1	0.16	5.92	2.84
IRS0773	470731	5559812	12	0	0	0	1	0.01	0.31	0.22
IRS0774	470705	5559810	2193	5	2	0	2	0.10	2.20	1.72
IRS0776	470681	5559808	7	0	0	0	1	0.12	3.14	2.04
IRS0777	470656	5559818	6	2	2	0	3	0.47	9.22	8.12
IRS0778	470710	5559859	7	1	1	0	1	0.06	1.45	1.08
IRS0779	470765	5559851	2	0	0	0	1	0.01	0.24	0.19
IRS0780	470753	5559905	4	0	1	0	1	0.10	1.96	1.62
IRS0781	470733	5559916	102	0	1	0	1	0.30	5.93	5.15
IRS0782	470701	5559907	6	2	45	1	7	0.37	7.29	6.47
IRS0783	470661	5559913	2264	0	3	1	2	0.21	6.06	3.65
IRS0784	470534	5559963	13	0	1	0	1	0.12	3.90	2.15
IRS0785	470578	5559960	6	0	0	0	1	0.09	2.66	1.48
IRS0786	470642	5559957	223	0	1	0	1	0.10	3.02	1.75
IRS0787	470685	5559964	550	0	3	6	3	0.36	7.42	6.23
IRS0788	470734	5559950	1981	3	2	0	1	0.19	4.08	3.22
IRS0789	470731	5558963	187	2	1	3	3	0.37	11.15	6.60
IRS0790	470833	5558908	11	0	2	0	2	0.45	9.03	7.80
IRS0791	470936	5558909	2	1	1	1	2	0.13	2.51	2.13
IRS0792	470983	5558863	2	1	1	0	1	0.41	8.38	7.20
IRS0793	470931	5558851	1	2	1	0	2	0.14	2.79	2.32
IRS0794	470906	5558857	0	0	2	0	2	0.69	13.70	11.85
IRS0795	470890	5558862	4	2	1	0	1	0.28	5.73	4.74
IRS0796	470860	5558862	2	1	1	0	2	0.21	4.09	3.46
IRS0797	470558	5560010	2	5	1	0	2	0.30	6.10	4.95
IRS0798	470582	5560009	1	0	1	0	1	0.09	1.80	1.54
IRS0800	470606	5560010	2	0	1	0	2	0.26	5.21	4.37
IRS0801	470307	5558959	1	3	1	0	1	0.04	0.87	0.69
IRS0802	470258	5558956	4	2	0	0	1	0.10	2.57	1.55
IRS0803	470158	5559407	13	1	1	0	2	0.23	5.08	3.57
IRS0804	470184	5559455	1	1	1	0	2	0.43	8.22	6.89
IRS0805	470133	5559457	1	2	1	0	1	0.17	3.12	2.57
IRS0806	470040	5559410	1	2	2	1	2	0.93	17.45	15.05
IRS0807	469988	5559409	0	1	1	0	2	0.68	12.75	10.90
IRS0808	469943	5559410	2	1	5	3	8	0.83	16.60	13.25
IRS0809	469794	5559411	1	1	1	1	2	0.51	9.84	8.29
IRS0810	469744	5559409	1	4	9	3	9	0.77	14.65	12.25
IRS0811	469692	5559409	19	2	2	2	8	0.09	2.07	1.37

For personal use only

Sample ID	Easting (m)	Northing (m)	U ₃ O ₈ (ppm)	Th (ppm)	As (ppm)	Co (ppm)	Ni (ppm)	Pb 204 (ppm)	Pb 206 (ppm)	Pb 207 (ppm)
IRS0812	469641	5559409	9	1	2	1	4	0.30	5.64	4.73
IRS0813	469591	5559407	0	0	3	0	2	0.37	7.08	5.87
IRS0814	469543	5559410	18	3	3	3	6	0.05	1.02	0.72
IRS0815	469496	5559409	3	1	1	2	4	0.16	3.27	2.54
IRS0816	469443	5559409	20	1	1	1	5	0.21	4.03	3.36
IRS0817	470978	5560212	2	6	1	1	2	0.15	3.30	2.42
IRS0818	470882	5560207	1	4	1	1	4	0.05	1.12	0.80
IRS0819	470841	5560205	2	7	1	1	3	0.20	4.01	3.17
IRS0820	470784	5560210	0	2	1	0	3	0.39	7.46	6.15
IRS0821	470734	5560204	1	0	1	1	4	0.13	2.54	2.00
IRS0822	470683	5560209	1	0	1	1	4	0.09	1.88	1.46
IRS0823	470733	5560159	0	0	1	0	2	0.03	0.54	0.44
IRS0824	470780	5560154	1	1	1	4	6	0.05	0.98	0.77
IRS0826	470757	5559063	1	1	1	0	3	0.38	7.34	5.98
IRS0827	470787	5559059	0	0	1	0	4	0.20	3.84	3.22
IRS0828	470808	5559062	1	1	1	0	3	0.33	6.15	5.16
IRS0829	470840	5559064	0	1	2	0	3	0.26	4.89	4.11
IRS0830	470860	5559068	1	1	1	0	3	0.26	4.87	4.03
IRS0831	470879	5559059	0	0	1	0	2	0.22	4.17	3.48
IRS0832	470831	5559105	1	0	1	0	2	0.56	10.40	9.34
IRS0834	470733	5559110	3	5	1	0	2	0.40	8.06	6.35
IRS0835	470626	5559109	3	0	1	0	2	0.33	6.11	5.15
IRS0836	470538	5559109	14	1	1	2	40	0.22	5.80	3.52
IRS0837	470487	5559111	0	1	2	0	6	0.31	6.06	5.13
IRS0838	470737	5560411	1	4	0	0	2	0.03	0.58	0.40
IRS0839	470784	5560408	1	1	0	1	7	0.04	0.88	0.67
IRS0840	470838	5560414	1	2	1	1	7	0.05	1.14	0.82
IRS0841	470881	5560407	0	0	1	0	3	0.09	1.64	1.33
IRS0842	470935	5560412	1	4	1	0	4	0.18	3.46	2.84
IRS0843	470987	5560407	1	1	1	0	2	0.46	9.04	7.70
IRS0844	471033	5560408	16	1	2	1	5	0.38	9.50	6.43
IRS0845	471081	5560410	4	3	1	0	7	0.42	8.44	7.04
IRS0846	471130	5560419	4	2	1	0	2	0.51	10.40	8.58
IRS0847	471078	5560349	4	1	1	0	2	0.50	9.76	8.30
IRS0848	470837	5560359	10	14	1	2	2	0.15	5.26	2.51
IRS0849	470786	5560360	6	0	1	1	5	0.09	2.42	1.40
IRS0851	470733	5560359	1	1	1	1	3	0.30	5.85	4.90
IRS0852	470830	5560157	14	1	0	0	3	0.10	2.79	1.65
IRS0853	470881	5560164	1	1	2	0	3	0.41	8.19	6.84
IRS0854	470907	5560108	2	3	1	0	3	0.07	1.60	1.04
IRS0855	470859	5560111	1	3	1	0	3	0.04	0.86	0.61
IRS0856	470835	5560105	1	4	1	0	4	0.08	1.62	1.20
IRS0857	470811	5560108	0	0	3	1	3	0.48	9.24	7.90
IRS0858	470758	5560107	1	4	1	1	1	0.07	1.34	1.07

For personal use only

Sample ID	Easting (m)	Northing (m)	U ₃ O ₈ (ppm)	Th (ppm)	As (ppm)	Co (ppm)	Ni (ppm)	Pb 204 (ppm)	Pb 206 (ppm)	Pb 207 (ppm)
IRS0859	470735	5560108	0	0	2	0	1	0.13	2.46	2.05
IRS0860	470709	5560109	0	0	1	0	2	0.02	0.37	0.30
IRS0861	470636	5560111	1	0	1	0	1	0.07	1.38	1.13
IRS0862	471440	5559633	3	0	1	0	3	0.34	8.40	5.82
IRS0863	471386	5559636	3	0	1	1	2	0.41	8.72	6.86
IRS0864	471340	5559636	4	0	1	1	3	0.20	5.48	3.20
IRS0867	471235	5559637	3	3	1	1	2	0.10	2.33	1.53
IRS0868	471185	5559640	7	0	1	1	2	0.15	3.80	2.51
IRS0869	471128	5559638	2	3	1	1	2	0.19	3.82	2.98
IRS0870	471107	5559407	6	0	1	1	2	0.17	3.50	2.61
IRS0871	471154	5559408	17	4	1	2	3	0.18	4.06	2.91
IRS0872	471211	5559407	14	2	1	1	4	0.23	7.21	3.71
IRS0874	471358	5559406	4	0	1	0	2	0.22	4.77	3.38
IRS0876	470683	5560358	0	1	1	0	2	0.42	8.12	6.89
IRS0877	470687	5560307	0	2	1	0	3	0.22	4.04	3.36
IRS0878	470730	5560310	0	0	1	0	3	0.21	3.96	3.31
IRS0879	471788	5560335	4	0	1	1	2	0.29	6.68	4.85
IRS0880	471737	5560333	1	7	1	1	2	0.18	3.53	2.83
IRS0881	471682	5560339	2	6	1	1	2	0.15	3.00	2.32
IRS0882	471635	5560336	4	8	0	1	2	0.07	1.76	1.09
IRS0883	471583	5560339	3	0	1	1	2	0.13	2.86	2.12
IRS0884	471533	5560334	2	3	1	0	2	0.24	5.03	3.80
IRS0885	471495	5560335	4	4	2	1	2	0.32	7.14	5.22
IRS0886	471697	5558172	1	0	1	1	4	0.26	5.29	4.10
IRS0887	471653	5558180	0	0	1	2	6	0.13	2.51	2.02
IRS0888	471602	5558173	1	1	1	5	24	0.09	1.78	1.36
IRS0889	471550	5558171	0	2	0	1	4	0.33	6.45	5.62
IRS0890	471499	5558175	0	3	1	1	4	0.14	2.65	2.20
IRS0891	471450	5558182	0	1	1	1	6	0.50	9.72	8.42
IRS0892	471401	5558171	0	1	1	1	4	0.52	9.97	8.31
IRS0893	470824	5560454	2	5	1	0	2	0.08	1.76	1.28
IRS0894	470782	5560461	2	5	0	0	1	0.03	0.90	0.51
IRS0895	470577	5560553	1	3	1	0	3	0.20	3.74	3.04
IRS0896	470530	5560560	1	9	1	0	4	0.16	3.11	2.49
IRS0897	470485	5560561	3	5	2	1	3	0.21	6.31	3.47
IRS0898	470481	5560505	1	3	1	0	2	0.25	4.94	3.88
IRS0900	470483	5560455	1	1	2	0	2	0.41	7.88	6.81
IRS0901	471511	5556717	1	0	15	2	13	0.35	7.50	5.84
IRS0902	471559	5556703	1	0	1	1	7	0.31	6.06	4.76
IRS0903	471606	5556716	4	3	0	1	2	0.17	3.87	2.71
IRS0904	471659	5556716	5	0	0	1	4	0.16	3.41	2.45
IRS0905	471708	5556715	2	1	2	5	6	0.56	11.50	9.16
IRS0906	471758	5556706	19	1	1	21	14	1.57	34.80	25.90
IRS0907	471575	5557386	4	0	2	1	6	0.19	3.97	3.06

For personal use only

Sample ID	Easting (m)	Northing (m)	U ₃ O ₈ (ppm)	Th (ppm)	As (ppm)	Co (ppm)	Ni (ppm)	Pb 204 (ppm)	Pb 206 (ppm)	Pb 207 (ppm)
IRS0908	471517	5557397	2	2	1	2	3	0.29	6.18	4.52
IRS0909	471481	5557390	2	1	1	1	3	0.19	4.04	3.07
IRS0910	471430	5557391	2	1	1	1	5	0.31	6.33	4.93
IRS0911	471311	5557395	1	2	1	3	4	0.40	8.07	6.69
IRS0912	470732	5560861	1	1	1	1	1	0.07	1.46	1.10
IRS0913	470733	5560910	1	3	1	0	3	0.51	10.20	8.41
IRS0914	470684	5560905	2	5	1	0	2	0.04	1.12	0.66
IRS0915	470683	5560859	1	4	1	1	2	0.12	2.35	1.84
IRS0916	470690	5560808	1	2	2	0	2	0.31	6.17	4.85
IRS0917	470636	5560811	1	6	1	1	8	0.10	1.94	1.49
IRS0918	470585	5560807	4	0	1	0	3	0.17	4.28	2.77
IRS0919	470631	5560755	2	2	1	1	4	0.15	3.04	2.30
IRS0920	470579	5560757	1	1	0	0	2	0.02	0.45	0.30
IRS0921	470532	5560808	1	3	1	0	2	0.03	0.64	0.42
IRS0922	470534	5560757	1	2	1	0	2	0.05	1.05	0.74
IRS0923	470536	5560706	1	5	1	1	3	0.09	1.82	1.40
IRS0924	470527	5560658	1	3	1	0	3	0.16	2.96	2.43
IRS0926	470528	5560608	1	2	1	0	3	0.06	1.33	0.98
IRS0927	470585	5560606	3	0	1	0	3	0.11	2.43	1.73
IRS0928	470583	5560659	0	1	2	0	2	0.21	3.83	3.20
IRS0929	470484	5560610	1	0	1	1	2	0.05	1.03	0.71
IRS0930	470433	5560661	0	0	0	0	1	0.02	0.37	0.27
IRS0931	470385	5560661	3	0	1	1	1	0.08	1.94	1.32
IRS0932	470388	5560713	1	1	1	1	2	0.11	2.18	1.79
IRS0934	470382	5560760	1	0	1	0	3	0.03	0.61	0.49
IRS0935	470385	5560807	0	0	1	0	1	0.08	1.41	1.18
IRS0936	470384	5560858	1	2	1	1	3	0.26	4.93	4.08
IRS0937	470382	5560906	1	4	1	1	4	0.07	1.42	1.05
IRS0938	470329	5560909	0	0	0	0	2	0.02	0.39	0.30
IRS0939	470289	5560909	0	0	0	0	2	0.01	0.19	0.14
IRS0940	470226	5560915	120	0	2	1	2	0.41	9.55	6.87
IRS0941	470183	5560909	1	0	1	0	2	0.59	11.55	9.68
IRS0942	470130	5560909	1	1	1	1	3	0.35	6.65	5.47
IRS0943	470082	5560911	1	2	1	1	2	0.28	5.29	4.36
IRS0944	470432	5560911	0	1	2	0	2	0.45	8.86	7.08
IRS0945	470483	5560909	0	0	2	0	2	0.02	0.38	0.30
IRS0946	470486	5560858	0	0	0	0	5	0.02	0.46	0.32
IRS0947	470433	5560858	1	2	1	0	1	0.12	2.43	1.92
IRS0948	470431	5560808	0	5	1	0	1	0.07	1.36	1.10
IRS0949	470481	5560807	2	1	0	0	4	0.04	1.04	0.63
IRS0951	470480	5560412	1	3	2	1	3	0.46	9.04	7.71
IRS0952	470481	5560359	2	1	8	2	6	0.49	10.30	8.16
IRS0953	470478	5560307	1	2	1	1	3	0.45	8.87	7.45
IRS0954	470531	5560309	1	1	1	0	5	0.38	7.65	5.86

For personal use only

Further High Grade Uranium In Soil Results From Portland Creek



Sample ID	Easting (m)	Northing (m)	U ₃ O ₈ (ppm)	Th (ppm)	As (ppm)	Co (ppm)	Ni (ppm)	Pb 204 (ppm)	Pb 206 (ppm)	Pb 207 (ppm)
IRS0955	470538	5560357	0	1	1	0	2	0.26	4.76	3.99
IRS0956	470589	5560356	3	6	1	1	3	0.37	9.14	6.17
IRS0957	470579	5560310	0	0	0	0	1	0.03	0.55	0.44
IRS0958	470635	5560310	5	0	1	1	7	0.16	3.49	2.53
IRS0959	470634	5560360	1	1	1	1	4	0.24	4.64	3.81
IRS0960	470634	5560408	1	2	1	0	4	0.10	2.04	1.62
IRS0961	470633	5560460	1	1	2	1	8	0.32	5.98	4.95
IRS0962	470633	5560509	0	1	1	1	9	0.08	1.44	1.17
IRS0963	470381	5560406	16	2	4	2	13	0.15	3.06	2.41
IRS0964	470336	5560412	1	5	3	2	4	0.27	5.32	4.21
IRS0965	470782	5560653	1	3	1	1	3	0.22	4.23	3.40
IRS0967	470780	5560705	0	1	1	0	5	0.06	1.13	0.90
IRS0968	470783	5560760	1	1	1	0	3	0.06	1.22	0.97
IRS0969	470828	5560809	1	3	1	0	2	0.04	0.80	0.57
IRS0970	470885	5560809	4	0	0	0	2	0.03	0.53	0.39
IRS0971	470783	5560807	1	2	1	1	4	0.19	3.78	2.97
IRS0972	470735	5560807	1	3	1	0	3	0.35	6.90	5.46
IRS0973	470732	5560762	1	1	1	1	2	0.13	2.55	1.96
IRS0974	470733	5560710	1	4	1	1	3	0.31	5.98	4.86
IRS0976	470736	5560657	1	2	1	0	2	0.36	7.18	6.07
IRS0977	470681	5560658	2	1	1	0	2	0.07	1.58	1.05
IRS0978	470635	5560611	0	0	1	0	1	0.07	1.35	1.12
IRS0979	470686	5560605	1	0	1	0	2	4.61	79.60	71.30
IRS0980	470734	5560608	1	3	1	0	2	0.10	2.09	1.60
IRS0981	470783	5560610	2	5	0	1	1	0.05	1.26	0.78
IRS0982	470783	5560559	2	8	0	1	1	0.04	1.18	0.67
IRS0983	470738	5560509	3	0	1	0	2	0.09	2.14	1.45
IRS0984	470734	5560459	1	1	1	1	2	0.03	0.86	0.56
IRS0985	470788	5560502	3	4	1	0	1	0.07	1.61	1.09
IRS0986	470978	5560457	69	3	1	1	2	0.33	7.55	5.60
IRS0987	471034	5560458	144	1	1	0	2	0.14	3.39	2.22
IRS0988	471120	5560461	3	6	1	0	2	0.44	8.85	7.34
IRS0989	471132	5560512	1	1	1	0	2	0.53	10.50	8.80
IRS0990	471181	5560556	6	2	1	0	1	0.10	2.38	1.52
IRS0991	471184	5560607	2	0	2	0	2	0.45	9.10	7.41
IRS0992	471132	5560609	12	1	1	1	2	0.29	6.57	4.89
IRS0993	471082	5560612	69	1	1	1	2	0.27	6.31	4.52
IRS0994	471085	5560560	112	0	1	1	2	0.25	7.55	4.32
IRS0995	471034	5560511	98	0	1	1	3	0.24	6.70	3.88
IRS0997	470985	5560558	26	3	1	1	2	0.34	7.22	5.63
IRS0998	470934	5560562	15	0	0	0	1	0.07	2.11	1.14
IRS1000	470935	5560609	1	3	1	1	1	0.17	3.34	2.60
IRS1001	470283	5560412	0	0	0	0	1	0.08	1.46	1.20
IRS1002	470234	5560409	1	5	1	1	2	0.25	4.96	4.11

For personal use only

Sample ID	Easting (m)	Northing (m)	U ₃ O ₈ (ppm)	Th (ppm)	As (ppm)	Co (ppm)	Ni (ppm)	Pb 204 (ppm)	Pb 206 (ppm)	Pb 207 (ppm)
IRS1003	470181	5560411	1	2	0	1	2	0.16	2.95	2.43
IRS1004	470134	5560409	0	2	1	1	2	0.19	3.55	2.90
IRS1005	470083	5560411	2	6	1	1	1	0.21	4.35	3.25
IRS1006	470385	5560462	1	2	3	1	3	0.42	8.42	6.99
IRS1007	470382	5560508	6	1	3	2	4	0.15	3.41	2.36
IRS1008	470382	5560559	1	2	1	1	2	0.44	8.76	7.39
IRS1009	470431	5560610	0	0	1	0	1	0.12	2.24	1.86
IRS1010	470428	5560563	0	0	1	1	4	0.49	9.49	8.10
IRS1011	470983	5560609	1	1	1	1	2	0.29	5.39	4.51
IRS1012	471033	5560608	1	1	1	0	2	0.48	9.60	8.10
IRS1013	470881	5560757	139	0	1	0	2	0.21	5.14	3.39
IRS1014	470882	5560708	8	0	1	0	2	0.08	2.25	1.27
IRS1015	470881	5560661	3	3	0	0	2	0.03	0.76	0.43
IRS1016	470933	5560659	3	3	1	0	1	0.06	1.32	0.89
IRS1017	470984	5560655	2	6	1	0	1	0.22	4.37	3.47
IRS1018	471036	5560658	50	0	1	0	2	0.11	2.63	1.74
IRS1019	471132	5560660	167	1	3	2	3	0.37	11.45	6.45
IRS1020	471184	5560706	13	3	1	0	1	0.29	5.44	4.42
IRS1021	471182	5560754	1	1	1	0	2	0.23	4.24	3.55
IRS1022	471183	5560806	7	7	1	0	1	0.24	4.68	3.68
IRS1023	471231	5560805	129	0	1	0	1	0.16	3.81	2.50
IRS1024	471232	5560712	3	2	1	0	2	0.26	4.94	4.07
IRS1026	471135	5560709	27	0	1	1	2	0.18	4.26	2.91
IRS1034	470558	5559009	1	0	0	0	2	0.02	0.49	0.33
IRS1036	470459	5559009	1	4	0	1	2	0.04	0.94	0.65
IRS1037	470460	5558960	3	6	0	1	2	0.07	1.82	1.06
IRS1038	470483	5558956	1	0	0	0	2	0.03	0.59	0.43
IRS1039	470509	5558957	1	3	0	0	1	0.03	0.71	0.41
IRS1040	470532	5558957	2	0	0	0	2	0.04	1.09	0.71
IRS1041	470558	5558955	2	7	0	0	3	0.06	1.52	0.92
IRS1042	470636	5558910	2	10	0	1	1	0.05	1.15	0.78
IRS1043	470583	5558909	2	14	0	0	1	0.04	0.96	0.62
IRS1044	470534	5558911	1	0	1	0	4	0.03	0.61	0.45
IRS1045	470531	5558859	27	4	0	0	3	0.11	2.54	1.66
IRS1046	470559	5558859	1	0	3	1	2	0.08	1.51	1.23
IRS1047	470585	5558860	1	1	4	1	3	0.06	1.18	0.92
IRS1048	470609	5558859	1	0	3	1	3	0.02	0.33	0.25
IRS1049	470634	5558859	1	1	0	0	1	0.01	0.21	0.15
IRS1051	470484	5560760	2	0	0	0	2	0.03	0.72	0.41
IRS1052	470432	5560752	0	0	1	0	3	0.07	1.25	1.01
IRS1053	470434	5560710	1	3	1	1	2	0.18	3.62	2.86
IRS1054	470485	5560708	1	4	0	0	3	0.02	0.63	0.39
IRS1055	470485	5560658	1	5	1	1	7	0.26	5.07	4.07
IRS1056	470437	5560506	0	2	1	0	3	0.24	4.55	3.75

For personal use only

Further High Grade Uranium In Soil Results From Portland Creek



Sample ID	Easting (m)	Northing (m)	U ₃ O ₈ (ppm)	Th (ppm)	As (ppm)	Co (ppm)	Ni (ppm)	Pb 204 (ppm)	Pb 206 (ppm)	Pb 207 (ppm)
IRS1057	470431	5560461	0	2	1	0	2	0.44	8.39	6.92
IRS1058	470428	5560411	0	0	1	1	4	0.48	9.00	7.74
IRS1059	470385	5560359	24	1	6	4	9	0.38	7.48	5.92
IRS1060	470385	5560309	1	2	7	1	5	0.62	12.05	10.05
IRS1061	470438	5560307	1	6	1	1	11	0.34	6.38	5.30
IRS1062	470435	5560357	1	2	2	1	6	0.38	7.16	6.01
IRS1063	470541	5560404	0	1	1	0	7	0.41	7.67	6.50
IRS1064	470583	5560404	1	5	2	1	5	0.30	5.66	4.68
IRS1065	470586	5560461	1	1	1	1	7	0.31	6.10	4.83
IRS1067	470528	5560511	2	4	1	1	8	0.24	4.63	3.72
IRS1068	470527	5560460	2	3	12	1	7	0.74	14.85	12.10
IRS1069	470584	5560514	1	3	1	1	6	0.37	6.98	5.83
IRS1070	470835	5560859	3	7	0	0	3	0.07	1.86	1.14
IRS1071	470782	5560864	2	5	1	1	7	0.76	14.75	12.55
IRS1072	470782	5560910	1	2	1	0	8	0.31	5.82	4.85
IRS1073	470833	5560912	10	0	1	1	6	0.21	4.42	3.25
IRS1074	470882	5560855	2	7	1	0	4	0.09	1.94	1.43
IRS1076	470885	5560907	1	2	1	1	11	0.38	7.19	5.90
IRS1077	471037	5561057	1	1	1	1	11	0.26	4.90	4.09
IRS1078	471142	5561060	0	0	2	1	12	0.52	10.00	8.57
IRS1079	471245	5561056	1	1	1	0	7	0.43	8.01	6.72
IRS1080	471327	5561011	55	0	1	1	12	0.12	2.77	1.87
IRS1081	471283	5561003	36	0	1	1	10	0.19	4.33	3.01
IRS1082	471282	5560959	2	4	1	0	7	0.57	10.40	8.99
IRS1083	471234	5560906	39	0	1	1	2	0.12	3.28	2.00
IRS1084	471136	5560965	10	4	1	1	9	0.33	6.29	5.09
IRS1085	471232	5561007	8	1	1	1	8	0.42	7.67	6.45
IRS1086	471180	5561005	37	2	1	1	8	0.39	7.42	6.04
IRS1087	471134	5561011	1	3	1	1	11	0.49	9.01	7.61
IRS1088	471084	5561011	2	5	1	0	6	0.40	7.41	6.22
IRS1089	471086	5560952	45	1	1	1	5	0.34	6.43	5.25
IRS1090	471034	5560958	18	1	1	1	7	0.26	5.08	4.05
IRS1091	471031	5561013	0	0	1	0	5	0.20	3.61	3.05
IRS1092	470984	5561005	1	0	1	1	4	0.13	2.55	2.09
IRS1093	470932	5561010	1	0	1	0	5	0.16	2.93	2.46
IRS1094	470987	5560958	74	1	1	1	10	0.30	6.13	4.65
IRS1095	470920	5560965	2	1	1	1	7	0.07	1.39	1.03
IRS1096	471082	5560709	4	7	1	1	9	0.39	7.43	6.09
IRS1097	470582	5557761	1	3	1	1	9	0.29	5.43	4.46
IRS1098	470533	5557757	17	2	0	0	6	0.07	2.41	1.21
IRS1100	470485	5557757	1116	53	1	0	3	0.06	3.19	1.12
IRS1101	470784	5560308	2	1	2	2	7	0.23	4.34	3.50
IRS1102	470838	5560311	2	2	1	0	5	0.04	0.99	0.70
IRS1103	470884	5560356	1	2	1	1	9	0.09	1.70	1.36

For personal use only

Sample ID	Easting (m)	Northing (m)	U ₃ O ₈ (ppm)	Th (ppm)	As (ppm)	Co (ppm)	Ni (ppm)	Pb 204 (ppm)	Pb 206 (ppm)	Pb 207 (ppm)
IRS1104	470930	5560310	1	2	1	1	4	0.26	4.94	4.09
IRS1105	470976	5560364	2	0	2	0	4	0.36	6.73	5.53
IRS1106	471035	5560308	28	2	1	1	2	0.19	5.25	3.08
IRS1107	471039	5560256	2	0	1	0	2	0.15	2.92	2.32
IRS1108	470929	5560261	6	0	1	1	2	0.10	2.86	1.63
IRS1109	470828	5560259	2	0	0	0	2	0.07	1.73	1.12
IRS1110	470737	5560256	1	1	1	1	3	0.13	2.46	1.97
IRS1111	470936	5560917	4	0	1	0	6	0.20	4.17	3.13
IRS1112	470931	5560863	3	8	1	0	2	0.12	2.59	1.89
IRS1113	470984	5560919	3	15	1	1	9	0.44	8.36	6.93
IRS1114	471033	5560906	16	8	1	1	9	0.38	7.31	5.83
IRS1115	471030	5560856	4	4	1	1	16	0.26	4.96	3.97
IRS1116	471085	5560811	87	3	2	1	6	0.46	9.72	7.15
IRS1117	471134	5560807	3	19	1	0	5	0.29	5.44	4.43
IRS1118	471135	5560859	18	1	0	0	4	0.10	2.28	1.60
IRS1119	471231	5560859	57	0	1	1	2	0.20	4.57	3.16
IRS1120	471183	5560909	14	1	1	0	1	0.15	3.11	2.28
IRS1121	471136	5560909	39	4	1	1	7	0.22	4.47	3.35
IRS1122	471082	5560912	230	0	1	3	4	0.26	5.97	4.08
IRS1123	471037	5560808	5	12	1	1	8	0.46	8.72	7.11
IRS1124	470508	5557808	14	15	0	2	3	0.12	3.78	1.92
IRS1126	470985	5560811	16	3	1	1	3	0.33	6.53	5.22
IRS1127	470933	5560809	27	0	1	0	2	0.14	3.10	2.22
IRS1128	471086	5560756	10	19	1	1	4	0.19	3.99	2.89
IRS1129	470981	5560765	38	3	1	1	4	0.45	8.69	6.87
IRS1130	470937	5560708	5	2	1	0	3	0.34	6.41	5.22
IRS1131	470986	5560711	14	2	2	1	6	0.27	5.17	4.10
IRS1132	470533	5557807	3	10	1	1	4	0.07	1.62	1.09
IRS1134	470558	5557809	2	5	2	1	21	0.23	4.39	3.52
IRS1135	470581	5557810	1	1	1	1	9	0.04	0.79	0.59
IRS1136	470605	5557808	1	4	2	1	6	0.31	5.82	4.82
IRS1137	470608	5557861	2	8	1	1	14	0.23	4.91	3.58
IRS1138	470604	5557906	2	4	0	1	9	0.10	2.33	1.58
IRS1139	470587	5557911	1	4	1	2	4	0.09	1.87	1.40
IRS1140	470560	5557910	8	5	1	1	4	0.17	6.03	2.87
IRS1141	470535	5557909	2	6	1	1	7	0.14	3.06	2.23
IRS1142	470509	5557910	2	2	1	1	11	0.08	1.74	1.21
IRS1143	470482	5557909	1	4	1	0	3	0.18	3.38	2.72
IRS1144	470456	5557909	18	21	1	2	2	0.17	5.73	2.86
IRS1145	470432	5557909	2	1	1	1	4	0.24	4.65	3.75
IRS1146	470407	5557908	2	1	1	1	4	0.28	5.12	4.27
IRS1147	470384	5557911	51	4	0	0	4	0.15	4.58	2.38
IRS1148	470355	5557910	3	0	2	0	3	0.36	6.53	5.57
IRS1149	470335	5557907	5	3	1	1	5	0.28	6.53	4.42

For personal use only

Sample ID	Easting (m)	Northing (m)	U ₃ O ₈ (ppm)	Th (ppm)	As (ppm)	Co (ppm)	Ni (ppm)	Pb 204 (ppm)	Pb 206 (ppm)	Pb 207 (ppm)
IRS1151	470709	5557761	183	0	1	0	5	0.10	2.34	1.54
IRS1152	470759	5557660	117	2	0	0	6	0.05	1.11	0.75
IRS1153	470784	5557709	6	2	0	0	1	0.05	1.71	0.88
IRS1154	470735	5557709	5	1	2	1	7	0.16	3.26	2.57
IRS1155	470707	5557709	1	0	1	0	4	0.09	1.71	1.42
IRS1156	470735	5557760	4	21	1	2	6	0.12	2.78	1.99
IRS1157	470810	5557810	1	4	1	1	4	0.16	3.02	2.43
IRS1158	470786	5557808	1	2	1	1	6	0.06	1.12	0.88
IRS1159	470759	5557809	1	0	1	0	3	0.05	0.92	0.73
IRS1160	470731	5557809	1	1	1	1	5	0.13	2.50	2.04
IRS1162	470708	5557862	2	1	0	1	5	0.05	1.03	0.76
IRS1165	470407	5557659	6	3	0	0	2	0.12	3.45	1.97
IRS1171	470157	5557659	56	2	0	0	2	0.27	6.16	4.34
IRS1172	470159	5557610	7	1	1	1	4	0.12	2.52	1.84
IRS1173	470184	5557609	18	1	1	1	8	0.30	6.48	4.79
IRS1174	470210	5557609	1604	6	0	1	4	0.08	2.06	1.28
IRS1175	470258	5557609	40	0	1	1	8	0.29	5.76	4.48
IRS1176	470334	5557608	26	2	0	0	2	0.18	5.10	2.92
IRS1177	470359	5557608	4	1	1	0	5	0.11	2.44	1.80
IRS1178	470431	5557760	27	2	1	0	4	0.12	3.22	1.97
IRS1179	470382	5557760	184	6	1	1	2	0.08	2.87	1.39
IRS1180	470335	5557759	2	4	1	1	4	0.07	1.74	1.12
IRS1181	470284	5557759	10	2	0	0	2	0.15	4.63	2.49
IRS1182	470233	5557757	3	0	0	0	2	0.06	1.32	0.88
IRS1183	470207	5557707	11	0	0	0	3	0.07	2.10	1.16
IRS1184	470184	5557709	5	0	0	0	2	0.05	1.07	0.74
IRS1185	470207	5557810	33	1	1	0	6	0.08	1.61	1.25
IRS1186	470236	5557810	16	1	3	0	4	0.04	0.84	0.62
IRS1187	470267	5557813	2	6	1	1	3	0.12	2.59	1.91
IRS1188	470284	5557809	10	2	0	0	1	0.13	5.46	2.24
IRS1189	470307	5557811	4	4	1	0	2	0.09	2.49	1.47
IRS1190	470334	5557810	3	1	0	0	2	0.08	1.87	1.25
IRS1191	470361	5557808	4	0	0	0	2	0.05	1.13	0.77
IRS1192	470386	5557810	38	0	0	0	1	0.04	1.57	0.73
IRS1193	470410	5557814	3	6	0	0	2	0.04	1.17	0.67
IRS1194	470435	5557809	9	7	1	1	2	0.08	2.27	1.24
IRS1195	470459	5557809	5	1	19	0	5	0.08	2.12	1.23
IRS1196	470459	5557863	80	1	1	0	8	0.09	2.68	1.51
IRS1197	470409	5557857	3	2	0	1	4	0.04	1.05	0.59
IRS1198	470357	5557859	9	1	0	0	2	0.05	1.83	0.81
IRS1200	470308	5557861	1	1	1	0	2	0.06	1.35	0.99
IRS1201	470261	5557860	9	1	1	1	9	0.07	1.97	1.15
IRS1202	470201	5557860	13	3	0	0	4	0.08	1.51	1.18
IRS1203	470385	5557609	1	0	1	0	3	0.32	5.88	4.93

For personal use only

Sample ID	Easting (m)	Northing (m)	U ₃ O ₈ (ppm)	Th (ppm)	As (ppm)	Co (ppm)	Ni (ppm)	Pb 204 (ppm)	Pb 206 (ppm)	Pb 207 (ppm)
IRS1204	470409	5557609	6	1	1	0	3	0.05	1.33	0.79
IRS1205	470432	5557610	4	0	1	0	3	0.17	3.16	2.59
IRS1206	470433	5557560	1	1	1	1	4	0.06	1.19	0.90
IRS1207	470435	5557507	1	0	2	0	4	0.11	2.01	1.64
IRS1208	470409	5557509	5	0	1	0	4	0.12	2.45	1.86
IRS1209	470384	5557508	5	0	3	1	7	0.06	1.31	0.90
IRS1210	470358	5557511	33	0	1	0	7	0.11	2.38	1.67
IRS1211	470334	5557510	35	4	0	0	2	0.15	4.69	2.38
IRS1212	470308	5557510	8	2	1	1	8	0.29	5.97	4.53
IRS1213	470234	5557710	6	1	0	0	2	0.06	1.35	0.94
IRS1214	470261	5557711	62	1	0	0	2	0.07	2.55	1.14
IRS1215	470286	5557709	125	2	1	1	15	0.42	8.40	6.51
IRS1216	470310	5557711	4	1	2	1	4	0.31	6.19	4.90
IRS1217	470356	5557706	1	1	2	1	5	0.40	7.39	6.22
IRS1218	470387	5557711	48	1	1	0	8	0.12	2.59	1.86
IRS1219	470409	5557708	38	2	1	0	8	0.07	2.77	1.15
IRS1220	470437	5557711	18	2	3	1	10	0.34	6.62	5.24
IRS1221	470456	5557709	12	1	1	1	11	0.07	1.53	1.05
IRS1222	470484	5557709	54	1	1	1	9	0.10	2.18	1.56
IRS1223	470533	5557709	5	3	0	0	4	0.07	1.67	1.10
IRS1224	470559	5557708	11	1	1	1	4	0.17	3.40	2.59
IRS1226	470281	5557510	5	2	1	1	6	0.28	5.58	4.32
IRS1227	470254	5557510	3	1	1	1	9	0.25	4.96	3.90
IRS1228	470234	5557509	5	3	1	1	4	0.23	5.14	3.56
IRS1229	470208	5557510	3	1	1	1	9	0.42	7.85	6.43
IRS1230	470184	5557508	2	0	0	0	8	0.07	1.55	1.16
IRS1231	470156	5557507	0	0	1	0	5	0.13	2.39	2.00
IRS1232	470184	5557561	36	2	1	1	4	0.27	5.79	4.24
IRS1234	470280	5557556	0	0	13	1	9	0.15	2.70	2.27
IRS1235	470384	5557560	6	1	0	0	3	0.09	2.19	1.38
IRS1236	470459	5557459	3	0	1	0	3	0.03	0.73	0.44
IRS1237	470407	5557459	1	2	2	0	2	0.03	0.55	0.41
IRS1238	470358	5557458	18	0	0	0	1	0.08	3.15	1.40
IRS1239	470358	5557409	3	2	1	0	2	0.04	1.15	0.70
IRS1240	470383	5557409	6	1	1	0	2	0.05	1.29	0.77
IRS1241	470410	5557410	2	0	1	0	2	0.06	1.20	0.93
IRS1242	470433	5557405	1	0	2	0	3	0.04	0.83	0.67
IRS1243	470456	5557409	1	3	1	0	3	0.05	1.03	0.77
IRS1244	470487	5557410	11	1	1	0	3	0.12	2.88	1.91
IRS1245	470308	5557460	46	1	2	1	6	0.19	4.88	3.00
IRS1246	470257	5557459	4	1	1	1	3	0.27	5.22	4.19
IRS1248	470161	5557411	0	0	1	0	2	0.10	1.85	1.53
IRS1249	470182	5557409	19	3	1	0	3	0.22	5.49	3.51
IRS1251	470304	5557908	2	0	0	0	3	0.05	1.15	0.81

For personal use only

Sample ID	Easting (m)	Northing (m)	U ₃ O ₈ (ppm)	Th (ppm)	As (ppm)	Co (ppm)	Ni (ppm)	Pb 204 (ppm)	Pb 206 (ppm)	Pb 207 (ppm)
IRS1252	470283	5557915	1	2	0	0	2	0.09	2.00	1.49
IRS1253	470258	5557910	1	2	1	1	2	0.17	3.35	2.71
IRS1254	470231	5557910	1	5	1	2	3	0.07	1.64	1.16
IRS1255	470382	5557958	5	2	2	1	4	0.30	5.80	4.69
IRS1256	470437	5557960	107	1	3	1	2	0.28	5.70	4.39
IRS1257	470480	5557960	1	4	1	1	2	0.20	3.81	3.15
IRS1258	470530	5557960	1	1	1	0	2	0.22	4.20	3.48
IRS1259	470588	5557958	3	2	1	1	2	0.10	2.37	1.53
IRS1260	470632	5557956	0	0	1	0	2	0.39	7.21	6.10
IRS1261	470734	5558809	2	0	1	1	16	0.03	0.48	0.39
IRS1262	470760	5558857	1	1	1	1	20	0.02	0.42	0.30
IRS1263	470584	5558810	1	0	2	1	21	0.03	0.48	0.40
IRS1264	470609	5558761	43	7	1	1	7	0.18	3.92	2.75
IRS1265	470634	5558759	2	1	1	1	4	0.09	1.66	1.36
IRS1267	470486	5558909	2	4	0	1	4	0.04	0.84	0.57
IRS1268	470458	5558659	3	0	1	1	5	0.07	1.53	1.07
IRS1269	470509	5558708	2	8	1	1	5	0.06	1.31	0.91
IRS1270	470560	5558710	1	0	1	0	8	0.04	0.82	0.66
IRS1271	470559	5558659	1	0	1	0	4	0.24	4.39	3.66
IRS1272	470509	5558511	2	2	1	1	2	0.09	1.79	1.36
IRS1273	470457	5558557	1	1	1	1	3	0.41	8.17	6.63
IRS1274	470457	5558608	5	22	1	2	3	0.23	6.27	3.67
IRS1276	470508	5558607	1	1	1	1	3	0.03	0.76	0.54
IRS1277	470507	5558459	4	2	1	1	4	0.10	2.07	1.54
IRS1278	470456	5558459	45	6	0	0	3	0.32	9.07	5.27
IRS1279	470408	5558457	60	5	0	0	3	0.17	5.26	2.77
IRS1280	470358	5558460	1	1	1	1	5	0.04	0.88	0.57
IRS1281	470357	5558411	1	0	1	1	7	0.08	1.44	1.15
IRS1282	470411	5558408	2	1	1	1	10	0.11	2.22	1.75
IRS1283	470457	5558410	4	5	1	1	3	0.17	3.59	2.59
IRS1284	470461	5558359	3	1	2	1	6	0.36	7.13	5.84
IRS1285	470409	5558358	0	1	1	0	3	0.10	1.97	1.59
IRS1286	470358	5558357	1	4	0	0	2	0.04	1.00	0.69
IRS1287	470360	5558310	1	2	1	1	4	0.04	0.76	0.56
IRS1288	470360	5558259	1	0	0	1	7	0.03	0.66	0.50
IRS1289	470310	5558259	8	1	0	1	4	0.08	1.72	1.19
IRS1290	470262	5558259	15	1	1	1	3	0.08	2.30	1.26
IRS1291	470206	5558260	1	2	1	1	2	0.36	6.91	5.49
IRS1292	470161	5558259	1	5	1	2	3	0.35	6.89	5.35
IRS1293	470110	5558260	15	3	1	0	2	0.25	5.96	3.92
IRS1294	470060	5558260	26	2	0	0	2	0.18	4.58	2.83
IRS1295	470407	5558257	1	1	1	0	5	0.07	1.49	1.16
IRS1296	470458	5558257	2	8	0	0	2	0.09	2.09	1.46
IRS1297	470457	5558309	2	3	1	0	4	0.08	1.94	1.27

For personal use only

Further High Grade Uranium In Soil Results From Portland Creek



Sample ID	Easting (m)	Northing (m)	U ₃ O ₈ (ppm)	Th (ppm)	As (ppm)	Co (ppm)	Ni (ppm)	Pb 204 (ppm)	Pb 206 (ppm)	Pb 207 (ppm)
IRS1298	470408	5558303	0	0	1	0	3	0.06	1.23	0.99
IRS1300	470510	5558209	2	4	0	0	2	0.06	1.50	0.93
IRS1301	470682	5557957	1	3	1	1	4	0.13	2.41	1.95
IRS1302	470730	5557960	2	1	0	1	2	0.19	3.78	2.88
IRS1303	470783	5557963	0	0	1	0	4	0.27	4.92	4.14
IRS1304	470833	5557964	2	11	1	1	3	0.26	4.94	3.98
IRS1305	470838	5557910	1	2	1	1	6	0.44	8.50	7.10
IRS1306	470806	5557910	4	35	1	1	2	0.22	4.70	3.48
IRS1307	470333	5557963	58	1	1	1	5	0.32	6.09	4.88
IRS1308	470284	5557960	1	1	2	1	4	0.46	9.08	7.49
IRS1309	470784	5557907	1	4	1	2	6	0.56	11.10	9.30
IRS1310	470757	5557908	1	3	1	2	3	0.40	7.82	6.13
IRS1311	470731	5557907	1	0	1	1	4	0.19	3.53	2.92
IRS1313	470685	5557910	1	4	1	1	6	0.23	4.37	3.59
IRS1314	470663	5557913	1	1	2	1	5	0.27	4.95	4.13
IRS1315	470632	5557905	1	1	2	1	8	0.20	3.73	3.08
IRS1316	470755	5558010	1	0	1	1	5	0.07	1.26	1.01
IRS1317	470814	5558010	1	1	1	1	7	0.11	2.18	1.74
IRS1318	470859	5558006	2	8	1	1	5	0.22	4.15	3.33
IRS1319	470660	5558005	1	0	2	1	14	0.23	4.20	3.52
IRS1320	470611	5558008	0	0	2	0	6	0.29	5.31	4.46
IRS1321	470559	5558008	3	2	1	2	6	0.28	5.73	4.37
IRS1322	470510	5558009	173	5	0	0	3	0.13	4.40	2.10
IRS1323	470457	5558003	302	0	1	1	6	0.12	3.24	2.00
IRS1324	470408	5558007	16	1	2	1	25	0.47	9.48	7.53
IRS1326	470360	5558005	24	0	3	1	11	0.28	5.89	4.49
IRS1327	470310	5558008	29	0	1	1	12	0.23	5.19	3.72
IRS1328	470252	5558010	0	0	2	1	8	0.43	8.20	6.69
IRS1329	470559	5557057	107	5	2	1	17	0.07	1.58	1.05
IRS1330	470611	5557059	11	1	4	2	14	0.16	2.97	2.46
IRS1332	470563	5557008	2	0	2	1	9	0.15	2.87	2.36
IRS1334	470583	5557011	347	3	2	1	13	0.13	3.13	2.15
IRS1335	470605	5557658	39	0	1	1	8	0.03	0.75	0.45
IRS1336	470558	5557660	15	1	1	1	6	0.02	0.45	0.34
IRS1337	470534	5557609	5	0	3	2	16	0.11	2.19	1.71
IRS1338	470559	5557609	6	2	2	2	14	0.15	3.20	2.40
IRS1339	470584	5557611	34	1	1	1	10	0.04	1.10	0.63
IRS1340	470607	5557610	15	0	2	1	11	0.20	3.77	3.10
IRS1341	470635	5557609	17	0	1	1	9	0.17	3.23	2.61
IRS1342	470660	5557610	27	1	0	1	8	0.02	0.61	0.33
IRS1343	470683	5557606	60	5	1	1	6	0.07	1.44	1.05
IRS1344	470709	5557610	98	2	1	1	7	0.08	2.27	1.27
IRS1345	470733	5557609	85	2	1	1	11	0.10	2.56	1.63
IRS1346	470759	5557611	308	13	1	1	5	0.17	5.00	2.71

For personal use only

Sample ID	Easting (m)	Northing (m)	U ₃ O ₈ (ppm)	Th (ppm)	As (ppm)	Co (ppm)	Ni (ppm)	Pb 204 (ppm)	Pb 206 (ppm)	Pb 207 (ppm)
IRS1347	470784	5557609	34	2	1	3	6	0.08	1.72	1.23
IRS1348	470883	5557612	3	4	3	2	12	0.35	7.57	5.64
IRS1349	470859	5557609	1	1	1	1	5	0.07	1.28	1.03
IRS1351	470895	5557615	2	1	1	1	7	0.35	7.27	5.63
IRS1352	470909	5557605	1	1	1	1	13	0.47	9.16	7.43
IRS1353	470936	5557609	2	1	2	1	12	0.59	11.30	10.00
IRS1354	470908	5557658	302	2	1	4	9	0.20	4.34	3.26
IRS1355	470831	5557554	58	0	2	1	7	0.16	3.70	2.57
IRS1356	470785	5557563	26	1	1	1	13	0.10	2.09	1.63
IRS1357	470731	5557560	1	1	1	1	8	0.06	1.16	0.93
IRS1358	470681	5557560	2	1	2	2	19	0.10	1.97	1.48
IRS1359	470632	5557559	1	1	1	1	9	0.04	0.80	0.57
IRS1360	470582	5557559	6	3	1	1	14	0.04	1.10	0.67
IRS1361	470532	5557559	548	4	1	1	12	0.23	8.71	3.86
IRS1362	470534	5557507	7	2	1	2	13	0.10	2.18	1.59
IRS1363	470559	5557510	3	2	1	1	9	0.10	1.98	1.50
IRS1364	470586	5557513	1	2	1	1	4	0.03	0.61	0.46
IRS1365	470608	5557510	3	1	1	1	5	0.13	2.53	2.04
IRS1367	470635	5557510	4	1	1	1	9	0.06	1.35	0.97
IRS1368	470660	5557508	1	8	2	3	14	0.51	9.76	8.29
IRS1369	470683	5557509	1	4	0	0	4	0.12	2.64	1.84
IRS1370	470710	5557509	2	10	1	2	9	0.10	2.54	1.59
IRS1371	470457	5557511	3	3	1	1	13	0.06	1.58	0.98
IRS1372	470483	5557512	17	2	1	1	13	0.09	2.40	1.47
IRS1373	470514	5557455	11	1	1	1	12	0.04	0.93	0.59
IRS1374	470607	5557462	1	2	0	1	11	0.07	1.61	1.13
IRS1376	470560	5557461	2	2	2	1	9	0.15	3.09	2.39
IRS1377	470659	5557461	1	1	1	3	14	0.10	2.06	1.60
IRS1378	470607	5557013	35	2	1	1	12	0.23	4.62	3.68
IRS1379	470710	5557460	2	1	1	2	9	0.11	2.34	1.68
IRS1380	470759	5557510	1	0	2	2	12	0.10	1.99	1.63
IRS1381	470782	5557512	1	3	2	2	13	0.24	4.56	3.80
IRS1382	470754	5557465	3	0	1	1	14	0.07	1.35	1.03
IRS1383	470737	5557412	2	2	0	1	11	0.12	2.92	1.93
IRS1384	470709	5557411	2	0	0	1	10	0.09	2.12	1.42
IRS1385	470681	5557407	1	3	0	0	4	0.17	3.58	2.61
IRS1386	470660	5557409	2	2	1	1	10	0.07	1.49	1.11
IRS1387	470634	5557412	0	1	1	1	9	0.09	1.77	1.42
IRS1388	470607	5557409	3	2	1	1	20	0.10	2.14	1.55
IRS1389	470579	5557413	5	3	1	1	10	0.06	1.30	0.89
IRS1390	470552	5557410	3	1	0	1	13	0.05	1.23	0.76
IRS1391	470531	5557403	5	2	0	1	10	0.06	1.79	1.04
IRS1392	470507	5557408	9	3	0	1	12	0.09	2.62	1.45
IRS1393	470485	5557360	13	13	0	1	14	0.10	3.05	1.64

For personal use only

Sample ID	Easting (m)	Northing (m)	U ₃ O ₈ (ppm)	Th (ppm)	As (ppm)	Co (ppm)	Ni (ppm)	Pb 204 (ppm)	Pb 206 (ppm)	Pb 207 (ppm)
IRS1394	470585	5557362	1	1	1	1	13	0.03	0.63	0.44
IRS1395	470633	5557362	1	1	1	1	13	0.03	0.70	0.54
IRS1396	470682	5557356	1	1	0	0	5	0.08	1.65	1.18
IRS1398	470762	5557320	81	5	1	1	10	0.13	2.64	2.05
IRS1400	470733	5557312	1	2	1	1	17	0.06	1.27	0.93
IRS1401	470732	5557307	1	2	1	1	9	0.06	1.18	0.89
IRS1402	470707	5557311	1	0	1	1	9	0.15	3.06	2.32
IRS1403	470682	5557309	1	1	1	1	12	0.04	0.85	0.59
IRS1404	470659	5557309	2	4	0	1	7	0.13	3.21	2.14
IRS1406	470584	5557310	2	1	1	1	18	0.14	2.91	2.23
IRS1407	470559	5557310	0	0	1	1	4	0.06	1.07	0.85
IRS1408	470505	5557315	5	1	1	1	14	0.33	6.75	5.47
IRS1409	470484	5557308	7	1	1	1	9	0.12	2.58	1.90
IRS1410	470509	5557253	4	1	1	1	4	0.15	3.19	2.32
IRS1411	470557	5557259	2	1	1	1	6	0.18	3.59	2.79
IRS1412	470612	5557258	1	1	0	1	6	0.08	1.84	1.29
IRS1413	470655	5557261	1	1	1	0	6	0.05	1.09	0.80
IRS1414	470708	5557260	4	1	0	1	4	0.09	1.89	1.35
IRS1415	470707	5557258	2	1	1	1	5	0.12	2.31	1.80
IRS1416	470782	5557308	2	0	2	1	12	0.23	5.04	3.69
IRS1417	470813	5557304	1	2	1	1	4	0.51	9.97	8.41
IRS1418	470833	5557310	1	5	1	1	6	0.47	9.38	7.86
IRS1419	470860	5557309	1	2	1	1	4	0.35	7.02	5.88
IRS1420	470878	5557309	1	2	1	1	5	0.32	6.58	5.41
IRS1421	470932	5557308	1	1	1	1	5	0.50	9.83	8.34
IRS1422	470960	5557307	1	2	0	1	6	0.06	1.08	0.86
IRS1423	470958	5557258	1	1	0	0	2	0.04	0.79	0.56
IRS1424	470458	5558209	0	0	1	0	2	0.05	0.85	0.70
IRS1426	470408	5558209	1	0	0	0	5	0.04	0.69	0.54
IRS1427	470408	5558159	0	0	2	0	3	0.12	2.30	1.93
IRS1428	470508	5558162	3	4	0	0	2	0.10	2.84	1.58
IRS1429	470708	5558161	2	2	1	1	13	0.11	2.30	1.68
IRS1430	470809	5558158	3	6	1	1	8	0.20	4.65	3.13
IRS1431	470908	5558158	1	5	0	1	4	0.07	1.59	1.20
IRS1432	470908	5558210	0	0	1	0	5	0.16	3.11	2.59
IRS1434	470958	5558210	1	1	0	0	3	0.08	1.61	1.27
IRS1435	470909	5558308	0	0	1	0	3	0.07	1.32	1.08
IRS1436	470908	5558359	0	0	1	1	4	0.03	0.68	0.53
IRS1437	470910	5558409	1	1	1	0	3	0.05	0.97	0.75
IRS1438	470958	5558409	1	4	1	1	3	0.42	8.79	7.28
IRS1439	470958	5558455	1	1	2	1	2	0.78	15.80	13.45
IRS1440	470859	5558410	1	1	1	0	2	0.13	2.44	2.00
IRS1441	470859	5558312	1	2	1	1	4	0.53	10.15	8.62
IRS1442	470859	5558257	1	4	1	0	2	0.37	7.20	6.09

For personal use only

Sample ID	Easting (m)	Northing (m)	U ₃ O ₈ (ppm)	Th (ppm)	As (ppm)	Co (ppm)	Ni (ppm)	Pb 204 (ppm)	Pb 206 (ppm)	Pb 207 (ppm)
IRS1443	470857	5558207	1	1	1	1	3	0.23	4.41	3.50
IRS1444	470808	5558206	10	1	1	1	2	0.18	3.69	2.79
IRS1445	470755	5558609	9	0	0	1	5	0.11	3.20	1.77
IRS1446	470805	5558561	3	1	1	1	7	0.08	1.67	1.23
IRS1447	470856	5558511	1	0	2	0	5	0.36	7.02	5.94
IRS1448	470906	5558512	1	1	2	0	4	0.15	2.73	2.25
IRS1449	470909	5558558	1	1	1	0	2	0.04	0.74	0.57
IRS1451	470910	5558608	6	5	1	0	3	0.07	1.81	1.10
IRS1452	470956	5558609	1	2	1	0	2	0.04	0.88	0.66
IRS1453	470959	5558658	2	7	1	0	2	0.10	2.49	1.64
IRS1454	470958	5558760	3	7	0	0	1	0.05	1.26	0.75
IRS1455	470958	5558806	1	1	1	0	2	0.41	8.04	6.70
IRS1456	470269	5558058	0	1	2	0	3	0.47	9.02	7.68
IRS1457	470310	5558063	18	0	1	1	3	0.20	4.34	3.15
IRS1458	470358	5558062	6	1	2	1	14	0.24	4.98	3.63
IRS1459	470460	5558061	18	0	1	0	6	0.12	3.14	1.96
IRS1460	470560	5558055	2	1	2	1	3	0.50	9.74	8.24
IRS1461	470659	5558058	1	0	2	0	2	0.29	5.54	4.69
IRS1462	470757	5558058	1	1	1	0	2	0.34	6.66	5.60
IRS1463	470855	5558059	1	0	2	0	4	0.40	7.84	6.60
IRS1464	470903	5558106	54	5	1	7	12	0.24	5.76	3.80
IRS1465	470910	5558015	8	0	2	1	7	0.56	10.80	9.21
IRS1467	470856	5558106	1	0	3	1	6	0.51	9.83	8.39
IRS1468	470663	5558109	1	3	1	1	6	0.36	6.96	5.88
IRS1469	470630	5557012	1	0	3	0	3	0.18	3.35	2.80
IRS1471	470705	5557064	17	2	1	1	6	0.41	8.19	6.74
IRS1472	470755	5557061	23	1	1	1	21	0.32	6.17	5.14
IRS1473	470804	5557061	10	4	1	1	3	0.21	4.45	3.27
IRS1474	470831	5557013	38	1	1	2	11	0.19	3.63	2.96
IRS1476	470829	5556960	65	2	2	1	4	0.18	3.43	2.86
IRS1477	470793	5556962	12	0	2	2	5	0.21	3.97	3.34
IRS1478	470809	5557007	35	1	1	1	6	0.16	3.00	2.47
IRS1479	470787	5557009	20	0	1	1	3	0.18	3.44	2.81
IRS1480	470760	5557010	7	1	1	1	4	0.22	4.11	3.45
IRS1481	470710	5557112	131	7	4	14	6	0.62	12.70	10.15
IRS1482	470686	5557108	3	1	0	1	7	0.12	2.92	1.94
IRS1483	470310	5558112	13	4	0	0	3	0.28	7.38	4.59
IRS1484	470257	5558110	8	7	1	2	5	0.29	6.16	4.63
IRS1485	470359	5558112	16	1	9	3	8	0.24	4.79	3.77
IRS1486	470406	5558109	3	0	3	1	5	0.19	3.59	2.96
IRS1487	470464	5558110	6	1	1	1	7	0.19	3.74	2.94
IRS1488	470510	5558105	4	1	6	1	5	0.37	7.13	5.91
IRS1489	470555	5558113	9	0	8	1	10	0.36	6.87	5.74
IRS1490	470606	5558107	14	1	5	1	7	0.21	4.23	3.32

For personal use only

Sample ID	Easting (m)	Northing (m)	U ₃ O ₈ (ppm)	Th (ppm)	As (ppm)	Co (ppm)	Ni (ppm)	Pb 204 (ppm)	Pb 206 (ppm)	Pb 207 (ppm)
IRS1491	470710	5558111	1	2	1	1	4	0.23	4.34	3.62
IRS1492	470760	5558108	0	0	4	0	3	0.21	3.83	3.27
IRS1493	470809	5558106	0	0	4	0	4	0.61	11.65	9.84
IRS1494	470658	5557105	1	1	1	1	6	0.14	2.69	2.19
IRS1495	470635	5557105	1	2	0	0	2	0.05	1.16	0.86
IRS1496	470961	5558107	0	0	6	1	4	0.56	10.70	8.66
IRS1497	470608	5557110	1	1	1	1	9	0.22	4.18	3.40
IRS1498	470956	5558056	0	0	1	1	4	0.41	7.55	6.47
IRS1500	470610	5556709	9	1	1	1	14	0.13	2.73	2.05
IRS1501	470560	5556710	64	1	1	2	22	0.26	5.42	4.15
IRS1502	470479	5556608	12	2	1	1	6	0.37	10.00	5.97
IRS1503	470458	5556611	8	1	2	1	8	0.28	5.73	4.39
IRS1504	470456	5556668	12	2	1	1	6	0.43	8.83	6.84
IRS1505	470459	5556708	33	2	1	1	3	0.27	6.67	4.38
IRS1506	470910	5557258	356	9	1	4	10	0.19	4.97	3.09
IRS1507	470857	5557258	535	12	1	5	9	0.41	11.85	6.74
IRS1508	470806	5557209	46	0	1	1	7	0.06	1.38	0.96
IRS1509	470781	5557210	2	2	1	1	3	0.07	1.56	1.16
IRS1510	470757	5557209	2	1	0	1	5	0.08	1.80	1.33
IRS1511	470735	5557210	2	5	1	0	3	0.10	2.16	1.57
IRS1512	470759	5557260	2	4	1	1	4	0.17	3.67	2.70
IRS1513	470811	5557263	1	1	2	1	5	0.49	9.03	7.65
IRS1514	470836	5557209	91	1	1	1	8	0.10	2.06	1.61
IRS1515	470856	5557211	119	3	2	3	13	0.16	3.49	2.62
IRS1516	470883	5557210	55	2	1	4	10	0.21	4.26	3.35
IRS1517	470911	5557211	79	2	2	4	10	0.15	2.98	2.42
IRS1518	470934	5557210	6	1	1	1	4	0.17	3.29	2.72
IRS1519	470954	5557213	3	1	1	2	5	0.07	1.29	1.06
IRS1520	470933	5557159	201	2	1	22	10	0.22	5.15	3.51
IRS1521	470884	5557158	84	2	2	9	10	0.23	4.80	3.70
IRS1522	470834	5557159	82	4	1	4	14	0.12	3.05	2.00
IRS1523	470782	5557162	20	3	2	3	14	0.08	1.71	1.27
IRS1524	470736	5557107	65	3	1	1	8	0.21	4.76	3.31
IRS1526	470735	5557160	5	3	0	1	2	0.14	3.28	2.21
IRS1527	470486	5556712	79	1	1	1	3	0.19	5.61	3.10
IRS1528	470509	5556710	104	2	0	0	2	0.23	7.62	3.90
IRS1529	470531	5556709	255	1	0	1	2	0.11	3.42	1.80
IRS1530	470534	5556762	26	5	0	1	3	0.14	4.38	2.40
IRS1531	470513	5556808	1	1	1	0	2	0.62	12.15	10.40
IRS1532	470532	5556810	199	55	0	1	2	0.13	4.31	2.23
IRS1534	470506	5556864	2	1	0	0	2	0.23	4.65	3.67
IRS1535	470551	5556855	4	2	1	0	2	0.32	6.83	5.13
IRS1536	470558	5556810	29	2	0	0	2	0.10	3.06	1.70
IRS1537	470588	5556808	47	4	4	5	6	0.55	11.65	8.50

For personal use only

Sample ID	Easting (m)	Northing (m)	U ₃ O ₈ (ppm)	Th (ppm)	As (ppm)	Co (ppm)	Ni (ppm)	Pb 204 (ppm)	Pb 206 (ppm)	Pb 207 (ppm)
IRS1538	470609	5556807	5	0	0	0	3	0.13	2.80	2.06
IRS1540	470657	5556810	3	0	0	0	2	0.08	1.84	1.27
IRS1541	470690	5556811	1	0	1	0	2	0.38	7.09	5.91
IRS1542	470709	5556807	2	1	1	0	2	0.30	6.06	4.70
IRS1544	470761	5556812	27	0	0	0	3	0.08	1.78	1.27
IRS1545	470584	5557107	1	2	0	0	1	0.15	3.45	2.39
IRS1546	470559	5557110	1	2	1	0	1	0.08	1.52	1.19
IRS1547	470532	5557110	1	2	0	0	1	0.10	2.27	1.51
IRS1548	470532	5557156	8	0	1	1	14	0.27	5.15	4.18
IRS1549	470536	5557207	2	1	1	0	8	0.18	3.48	2.83
IRS1551	470508	5557060	2	2	0	0	1	0.19	4.08	3.01
IRS1552	470459	5557059	62	0	0	0	1	0.07	2.01	1.13
IRS1553	470409	5557058	3	1	2	1	2	0.25	5.28	3.94
IRS1554	470358	5557061	4	2	1	0	2	0.31	7.64	5.12
IRS1555	470307	5557060	11	2	0	0	1	0.32	8.43	5.40
IRS1556	470285	5557110	1	1	1	1	2	0.34	6.83	5.53
IRS1557	470307	5557110	22	1	1	0	1	0.21	5.22	3.33
IRS1558	470359	5557110	21	1	0	1	2	0.20	4.91	3.09
IRS1559	470382	5557109	16	0	1	1	3	0.25	5.69	3.96
IRS1560	470409	5557109	59	0	0	0	1	0.07	1.87	1.10
IRS1561	470435	5557109	19	0	1	1	2	0.36	7.41	5.89
IRS1562	470459	5557111	15	2	1	0	1	0.28	7.26	4.52
IRS1563	470483	5557110	36	1	1	0	1	0.16	3.36	2.51
IRS1564	470510	5557109	2	1	0	0	1	0.08	1.85	1.33
IRS1565	470481	5557157	30	3	1	0	2	0.16	3.09	2.43
IRS1568	470382	5557157	121	5	0	1	1	0.21	4.89	3.29
IRS1570	470281	5557158	45	1	0	0	1	0.23	6.27	3.72
IRS1571	470207	5557209	48	11	1	3	4	0.36	10.25	6.07
IRS1572	470233	5557209	46	6	0	1	1	0.24	6.35	3.85
IRS1573	470261	5557209	101	9	1	2	4	0.35	9.19	6.23
IRS1576	470308	5557209	21	2	1	1	2	0.37	8.39	6.47
IRS1578	470362	5557208	1	1	1	0	2	0.52	10.35	8.75
IRS1580	470434	5557210	46	1	2	7	249	0.10	2.77	1.67
IRS1581	470460	5557210	16	1	0	1	5	0.12	3.20	1.96
IRS1582	470484	5557210	37	1	1	0	2	0.18	4.88	2.97
IRS1583	470509	5557210	13	7	0	0	1	0.17	5.13	2.73
IRS1584	470482	5556758	144	1	1	1	3	0.22	6.18	3.59
IRS1585	470433	5556758	27	3	1	1	2	0.29	7.65	5.03
IRS1586	470381	5556758	11	6	1	1	1	0.31	7.08	5.31
IRS1587	470334	5556760	4	4	1	1	2	0.30	6.95	5.05
IRS1588	470280	5556756	1	1	2	0	2	0.20	3.87	3.20
IRS1589	470311	5556812	12	4	0	1	2	0.22	6.58	3.61
IRS1590	470334	5556808	10	4	0	1	2	0.29	8.29	5.08
IRS1591	470357	5556808	4	3	1	2	3	0.26	5.60	4.20

For personal use only

Sample ID	Easting (m)	Northing (m)	U ₃ O ₈ (ppm)	Th (ppm)	As (ppm)	Co (ppm)	Ni (ppm)	Pb 204 (ppm)	Pb 206 (ppm)	Pb 207 (ppm)
IRS1592	470383	5556808	7	6	1	1	2	0.20	5.33	3.24
IRS1593	470410	5556810	9	6	2	1	4	0.28	7.28	4.81
IRS1594	470435	5556808	10	4	1	1	3	0.19	4.91	3.07
IRS1595	470484	5556811	1	2	1	1	1	0.19	3.83	2.98
IRS1596	470456	5556858	21	0	0	1	4	0.09	2.55	1.53
IRS1597	470410	5556858	8	4	1	1	2	0.20	5.25	3.29
IRS1598	470363	5556862	10	0	1	1	2	0.36	8.39	6.17
IRS1600	470307	5556860	2	5	0	2	2	0.12	2.71	1.95
IRS1601	470584	5557211	2	0	1	1	11	0.43	8.56	7.26
IRS1602	470605	5557211	1	3	0	0	1	0.11	2.32	1.76
IRS1603	470635	5557211	1	3	0	0	1	0.13	2.89	2.05
IRS1604	470656	5557212	1	7	1	1	1	0.23	4.66	3.65
IRS1605	470680	5557210	1	1	1	1	2	0.18	3.46	2.82
IRS1606	470705	5557207	3	3	1	1	6	0.21	4.94	3.31
IRS1607	470688	5557160	5	2	1	1	7	0.20	3.95	3.11
IRS1608	470635	5557159	1	1	1	1	9	0.25	5.21	4.03
IRS1609	470580	5557159	1	0	1	1	5	0.14	2.63	2.20
IRS1610	470508	5557013	14	0	1	1	6	0.20	4.00	3.24
IRS1611	470484	5557005	152	0	2	1	8	0.19	3.77	2.97
IRS1612	470462	5557008	11	1	1	1	11	0.27	5.51	4.51
IRS1613	470437	5557007	43	0	1	1	7	0.22	4.71	3.51
IRS1614	470411	5557012	17	0	1	1	5	0.27	5.14	4.20
IRS1615	470384	5557006	4	2	1	0	2	0.18	3.75	2.83
IRS1616	470360	5557011	5	7	1	0	2	0.20	4.18	3.19
IRS1617	470332	5557006	5	1	0	0	3	0.18	4.19	2.84
IRS1618	470307	5557005	11	3	1	1	6	0.29	6.88	4.61
IRS1619	470335	5556961	5	3	1	1	2	0.24	5.09	3.78
IRS1620	470384	5556959	14	4	1	1	5	0.31	7.03	5.02
IRS1621	470431	5556957	9	0	2	1	9	0.41	7.78	6.51
IRS1622	470483	5556962	1	2	0	0	3	0.06	1.31	0.91
IRS1623	470507	5556907	40	0	1	1	7	0.31	5.56	4.76
IRS1624	470529	5556908	14	1	1	2	5	0.24	4.55	3.71
IRS1626	471012	5556908	1	1	1	1	6	0.63	11.30	9.75
IRS1627	471032	5556915	0	0	1	0	4	0.14	2.42	2.14
IRS1628	470984	5556904	7	3	1	1	7	0.31	5.84	4.89
IRS1629	470955	5556908	2	1	1	1	7	0.31	5.46	4.81
IRS1630	470935	5556909	11	4	1	2	9	0.60	10.75	9.39
IRS1631	470907	5556906	118	1	1	2	8	0.27	4.93	4.19
IRS1632	470881	5556907	76	5	2	1	9	0.26	4.60	4.03
IRS1634	470856	5556905	82	2	1	1	6	0.32	5.63	4.98
IRS1635	470831	5556904	65	2	1	2	7	0.31	5.86	4.82
IRS1636	470804	5556910	20	1	0	1	3	0.29	6.09	4.56
IRS1637	470735	5556909	11	0	1	1	8	0.21	3.77	3.21
IRS1638	470882	5556961	75	0	1	1	5	0.31	5.54	4.79

For personal use only

Sample ID	Easting (m)	Northing (m)	U ₃ O ₈ (ppm)	Th (ppm)	As (ppm)	Co (ppm)	Ni (ppm)	Pb 204 (ppm)	Pb 206 (ppm)	Pb 207 (ppm)
IRS1639	470932	5556963	227	8	0	1	3	0.23	6.18	3.73
IRS1640	470976	5556952	5	1	1	1	3	0.24	4.26	3.73
IRS1641	470953	5557006	2	0	1	0	3	0.53	9.32	8.34
IRS1642	470926	5557005	4	4	1	1	3	0.25	4.98	3.95
IRS1643	470911	5557008	10	8	1	1	3	0.39	8.28	6.10
IRS1644	470886	5557013	15	6	2	2	8	0.34	6.92	5.39
IRS1645	470859	5557012	3	0	1	1	4	0.34	5.97	5.31
IRS1646	470858	5557058	39	2	1	6	5	0.31	5.70	4.88
IRS1647	470879	5557110	60	3	1	2	5	0.35	6.72	5.47
IRS1648	470859	5557111	55	6	0	2	3	0.62	12.35	9.87
IRS1649	470835	5557111	11	1	1	2	6	0.33	5.97	5.20
IRS1651	470210	5557410	1	1	1	1	4	0.51	8.87	7.94
IRS1652	470235	5557410	18	10	1	1	5	0.27	6.77	4.41
IRS1653	470259	5557410	10	2	1	1	6	0.30	5.77	4.70
IRS1654	470283	5557409	5	3	1	1	5	0.54	9.57	8.39
IRS1655	470310	5557410	11	3	1	1	6	0.39	8.06	6.16
IRS1656	470334	5557409	2	2	1	1	5	0.41	7.57	6.37
IRS1657	470434	5557365	0	0	1	1	3	0.33	5.69	5.05
IRS1658	470383	5557360	1	0	1	0	5	0.12	2.27	1.92
IRS1659	470333	5557358	21	1	2	1	5	0.39	7.70	6.12
IRS1660	470284	5557358	13	2	2	1	5	0.30	5.86	4.79
IRS1661	470233	5557358	1	0	2	1	3	0.92	16.45	15.15
IRS1662	470182	5557358	17	0	1	1	5	0.16	3.77	2.64
IRS1663	470159	5557307	1	1	1	0	3	0.77	13.80	12.05
IRS1664	470183	5557309	17	4	1	1	2	0.29	6.25	4.66
IRS1665	470208	5557308	16	4	1	1	5	0.33	7.01	5.20
IRS1667	470235	5557309	2	2	1	0	6	0.81	15.10	13.05
IRS1668	470281	5557310	19	4	1	1	5	0.35	7.66	5.64
IRS1669	470333	5557308	20	1	1	1	3	0.33	6.76	5.26
IRS1670	470359	5557310	36	1	1	0	3	0.15	3.53	2.35
IRS1671	470382	5557310	1	1	1	0	4	0.22	3.95	3.50
IRS1672	470409	5557310	2	2	2	1	4	0.16	2.92	2.47
IRS1673	470433	5557310	2	1	1	0	4	0.25	4.58	3.91
IRS1674	470460	5557308	9	1	1	1	4	0.35	6.22	5.41
IRS1676	470460	5557262	2	1	1	1	1	0.17	3.18	2.62
IRS1677	470409	5557257	3	2	1	0	1	0.26	5.04	4.14
IRS1678	470358	5557259	6	1	0	0	1	0.16	3.14	2.44
IRS1679	470305	5557260	42	2	0	1	2	0.20	5.20	3.28
IRS1680	470259	5557254	165	3	2	1	3	0.20	4.50	3.15
IRS1681	470208	5557259	105	1	0	1	3	0.23	5.12	3.62
IRS1682	470280	5556910	4	2	1	1	2	0.36	7.92	6.18
IRS1683	470310	5556910	3	1	1	1	1	0.27	5.93	4.48
IRS1684	470356	5556909	3	3	2	1	3	0.31	6.88	5.21
IRS1685	470383	5556910	10	3	1	1	3	0.31	7.73	5.27

For personal use only

Sample ID	Easting (m)	Northing (m)	U ₃ O ₈ (ppm)	Th (ppm)	As (ppm)	Co (ppm)	Ni (ppm)	Pb 204 (ppm)	Pb 206 (ppm)	Pb 207 (ppm)
IRS1686	470410	5556908	8	2	2	2	4	0.33	7.55	5.66
IRS1687	470433	5556909	7	2	1	1	3	0.46	9.95	7.92
IRS1688	470459	5556911	49	1	1	1	3	0.35	7.07	5.94
IRS1689	470482	5556909	106	1	1	1	3	0.16	2.99	2.44
IRS1690	470436	5556711	129	2	1	1	2	0.49	12.20	8.38
IRS1691	470408	5556710	3	2	1	0	1	0.26	5.47	4.07
IRS1692	470382	5556709	14	1	1	0	2	0.23	5.35	3.62
IRS1693	470360	5556709	33	3	0	0	1	0.39	10.25	6.89
IRS1694	470334	5556708	37	4	1	0	1	0.36	9.71	6.21
IRS1695	470308	5556709	5	2	1	1	2	0.60	12.60	10.15
IRS1696	470507	5556658	36	0	1	1	5	0.22	6.41	3.62
IRS1697	470507	5556607	17	0	1	0	3	0.30	7.79	5.21
IRS1698	470506	5556557	6	2	1	1	2	0.26	6.76	4.22
IRS1700	470535	5556509	10	1	1	0	1	0.26	7.35	4.41
IRS1701	470860	5558460	10	4	1	1	3	0.43	8.79	7.28
IRS1702	470808	5558408	1	2	1	0	2	0.35	7.03	5.89
IRS1703	470810	5558359	39	0	1	1	4	0.16	4.64	2.59
IRS1704	470809	5558309	103	2	1	1	3	0.24	6.35	3.82
IRS1705	470758	5558307	18	5	1	1	2	0.24	5.50	3.75
IRS1706	470759	5558259	22	4	0	0	2	0.23	7.59	3.77
IRS1707	470710	5558207	1	2	2	0	2	0.32	6.53	5.50
IRS1708	470760	5558409	42	1	1	1	3	0.40	9.06	6.76
IRS1709	470756	5558458	20	0	0	0	2	0.16	3.91	2.50
IRS1710	470941	5557710	0	0	1	0	4	0.33	6.59	5.62
IRS1711	470811	5557108	28	5	1	1	2	0.28	5.58	4.56
IRS1712	470785	5557107	115	7	0	1	3	0.06	1.24	0.93
IRS1713	470758	5557105	89	1	1	4	4	0.34	7.92	5.74
IRS1714	470944	5557761	1	1	1	1	3	0.50	9.98	8.48
IRS1715	470933	5557802	1	0	1	0	2	0.06	1.16	0.96
IRS1716	470951	5557648	1	2	1	1	3	0.36	7.22	6.12
IRS1717	470972	5557615	0	0	1	1	3	0.40	7.53	6.32
IRS1718	470984	5557559	0	1	1	1	3	0.47	8.80	7.38
IRS1719	470990	5557501	0	0	2	1	3	0.58	11.10	9.34
IRS1720	470961	5557406	0	0	1	1	2	0.21	3.94	3.26
IRS1721	470940	5557407	0	0	1	1	4	0.69	13.60	11.35
IRS1722	470907	5557464	0	0	1	1	3	0.43	8.06	6.74
IRS1723	470998	5557507	0	1	1	1	5	0.89	17.25	14.55
IRS1724	470851	5557508	18	0	1	0	4	0.16	3.44	2.50
IRS1726	470783	5556812	1	1	1	1	2	0.50	9.95	7.94
IRS1727	470906	5557493	0	0	1	0	3	0.35	6.54	5.47
IRS1728	470886	5557510	1	0	1	0	3	0.69	13.30	11.30
IRS1729	470357	5556659	25	3	0	0	2	0.35	8.42	5.61
IRS1730	470409	5556662	11	1	1	0	2	0.46	9.71	7.27
IRS1731	470988	5556613	3	0	1	3	10	0.26	5.36	4.05

For personal use only

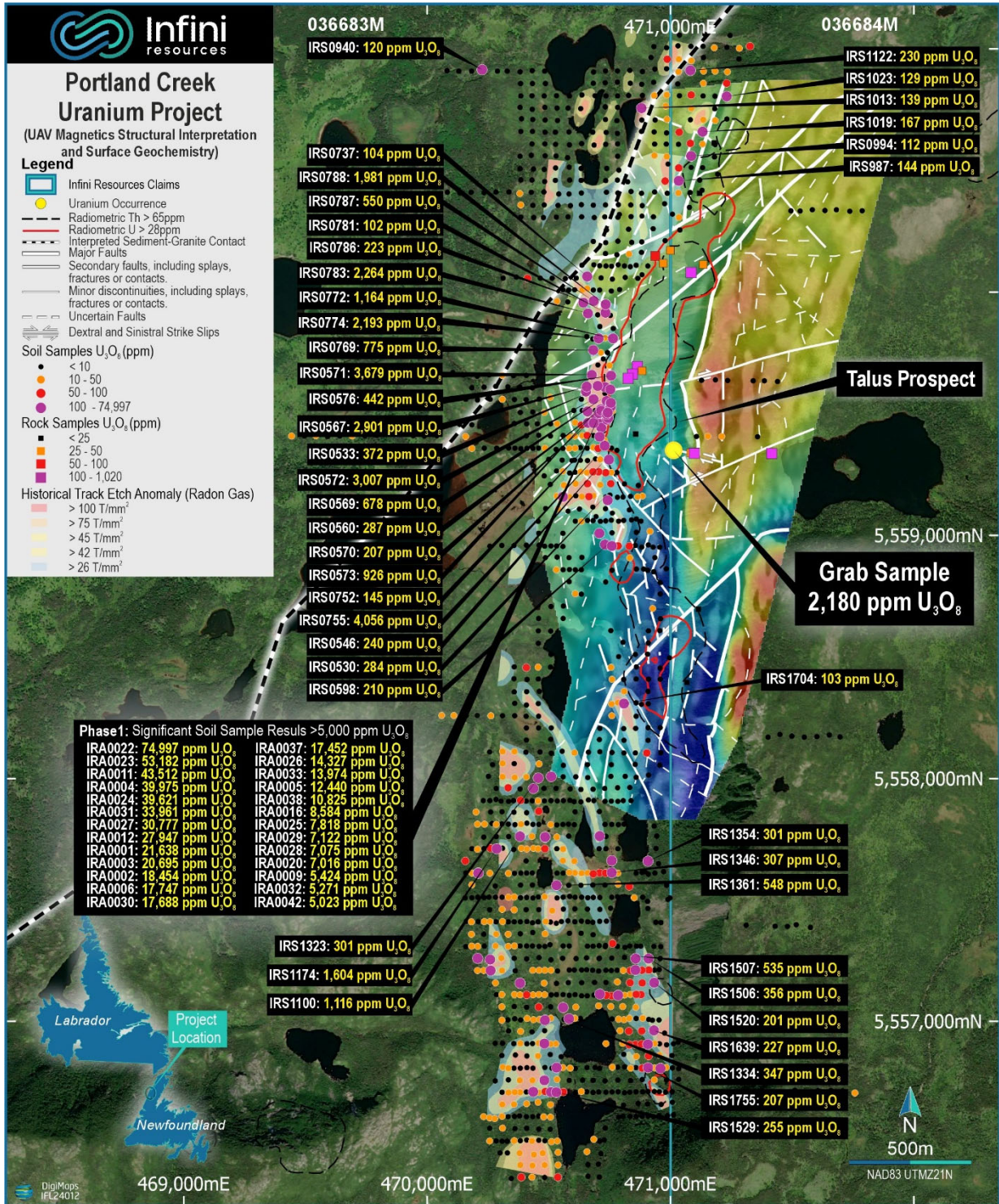
Sample ID	Easting (m)	Northing (m)	U ₃ O ₈ (ppm)	Th (ppm)	As (ppm)	Co (ppm)	Ni (ppm)	Pb 204 (ppm)	Pb 206 (ppm)	Pb 207 (ppm)
IRS1732	471012	5556616	0	0	1	1	6	0.45	8.41	7.07
IRS1734	471008	5556668	3	1	0	6	18	0.26	5.18	4.02
IRS1735	471007	5556711	3	3	1	6	14	0.36	7.27	5.75
IRS1736	470980	5556709	0	0	1	1	3	0.41	7.66	6.43
IRS1737	470954	5556711	5	2	1	7	14	0.28	5.81	4.43
IRS1738	470934	5556712	5	2	2	5	11	0.24	4.92	3.81
IRS1739	470908	5556712	5	1	1	9	22	0.26	5.61	4.14
IRS1740	470886	5556711	6	3	0	5	13	0.14	3.53	2.32
IRS1741	470858	5556711	1	1	1	1	4	0.38	7.28	6.00
IRS1742	470511	5556506	11	2	1	1	3	0.27	6.52	4.32
IRS1743	470484	5556510	9	2	0	0	2	0.23	6.08	3.72
IRS1744	470459	5556512	3	2	1	0	3	0.22	4.95	3.54
IRS1745	470431	5556509	11	6	1	1	3	0.22	5.81	3.57
IRS1746	470409	5556513	8	2	0	0	3	0.19	4.85	3.06
IRS1747	470383	5556510	8	2	1	1	2	0.23	5.09	3.59
IRS1748	470358	5556510	10	3	0	1	2	0.32	7.23	5.11
IRS1749	470329	5556508	6	3	1	0	1	0.24	5.19	3.76
IRS1751	470811	5556813	1	1	1	1	4	0.57	10.80	8.88
IRS1752	470836	5556808	16	0	0	2	10	0.17	3.53	2.56
IRS1753	470858	5556810	5	0	0	1	6	0.21	4.44	3.31
IRS1754	470884	5556808	70	3	0	1	5	0.29	6.52	4.48
IRS1755	470908	5556810	208	0	0	1	3	0.05	1.10	0.73
IRS1756	470934	5556809	37	6	0	1	2	0.18	4.20	2.87
IRS1757	470959	5556807	111	4	1	2	6	0.33	7.21	5.18
IRS1758	470983	5556811	40	6	1	2	3	0.25	5.75	3.95
IRS1759	471008	5556809	2	1	1	1	5	0.42	7.67	6.47
IRS1760	471034	5556806	8	5	1	0	5	0.19	4.44	3.01
IRS1761	471034	5556762	3	1	1	1	4	0.51	9.97	7.85
IRS1762	470984	5556760	2	2	1	1	5	0.49	9.07	7.61
IRS1763	470934	5556760	41	5	1	8	17	0.19	4.29	3.01
IRS1764	470884	5556761	5	1	1	7	15	0.23	4.67	3.59
IRS1765	470833	5556709	1	1	1	1	4	0.49	9.05	7.56
IRS1767	470811	5556707	0	0	2	0	5	0.69	13.15	11.20
IRS1768	470785	5556711	2	0	1	1	4	0.39	7.45	6.15
IRS1769	470760	5556710	3	3	1	2	21	0.32	6.44	5.02
IRS1770	470735	5556709	2	0	1	0	3	0.16	3.27	2.54
IRS1771	470705	5556710	1	0	1	1	5	0.39	7.19	5.99
IRS1772	470682	5556708	1	2	0	0	3	0.04	0.87	0.64
IRS1773	470656	5556711	2	1	0	0	4	0.15	3.35	2.31
IRS1775	470731	5556756	1	0	1	1	4	0.41	7.48	6.26
IRS1776	470784	5556759	1	1	1	1	6	0.29	5.65	4.46
IRS1777	470807	5556656	3	2	1	2	6	0.30	5.94	4.62
IRS1778	470867	5556663	3	1	1	1	9	0.33	6.50	5.17
IRS1779	470906	5556661	6	4	1	9	7	0.26	5.80	4.06

For personal use only

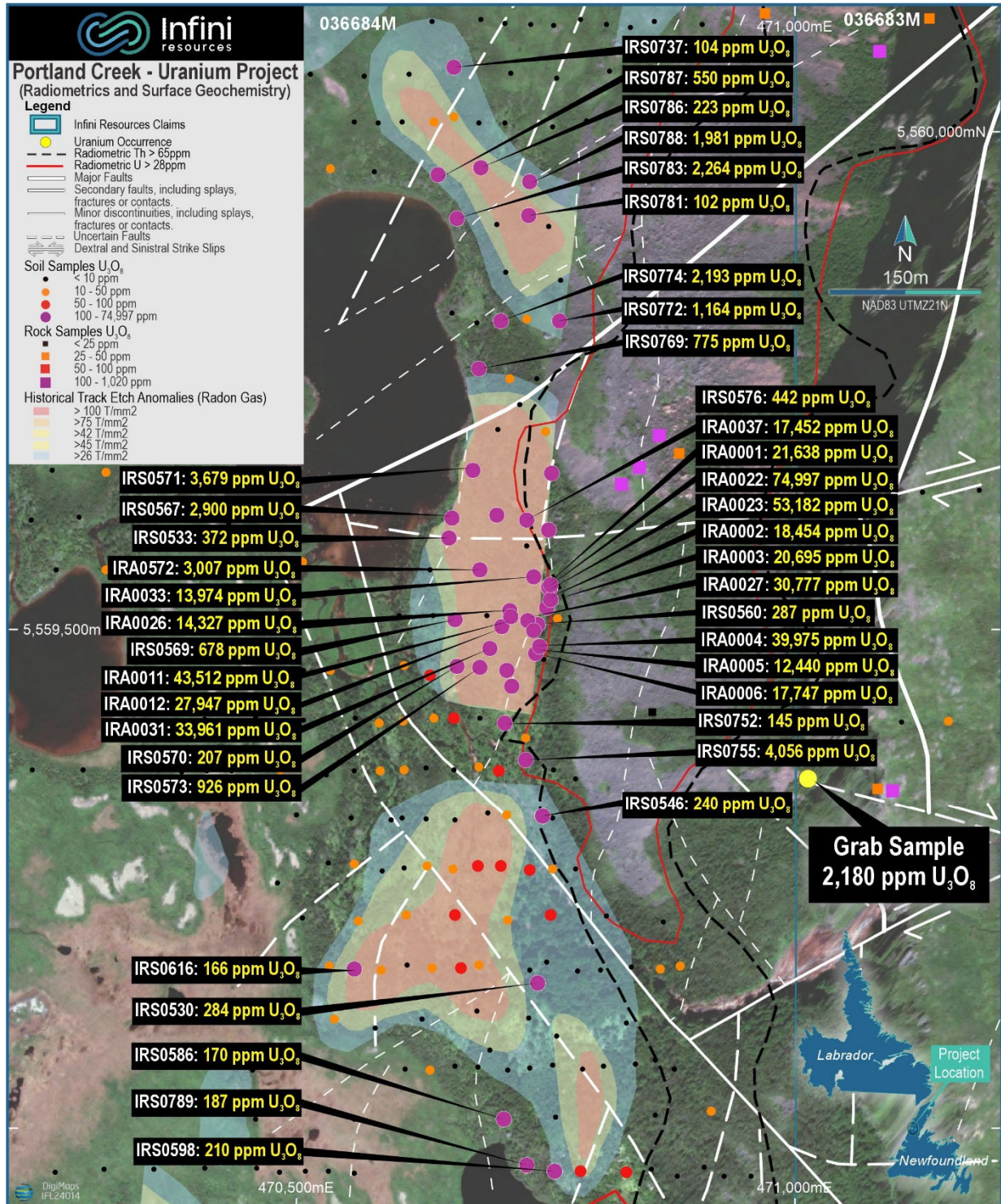
Sample ID	Easting (m)	Northing (m)	U ₃ O ₈ (ppm)	Th (ppm)	As (ppm)	Co (ppm)	Ni (ppm)	Pb 204 (ppm)	Pb 206 (ppm)	Pb 207 (ppm)
IRS1780	470962	5556659	3	1	2	6	11	0.33	6.89	5.15
IRS1781	470954	5556613	0	0	1	4	11	0.31	5.75	4.83
IRS1782	470836	5556757	1	1	1	1	6	0.44	8.16	6.74
IRS1783	470308	5556508	5	1	1	1	4	0.28	5.81	4.45
IRS1784	470284	5556509	9	4	1	0	3	0.32	7.38	5.06
IRS1785	470257	5556509	14	1	1	1	7	0.37	7.91	5.83
IRS1786	470257	5556561	8	1	1	1	8	0.41	8.94	7.09
IRS1787	470310	5556562	15	1	1	0	4	0.25	6.33	4.00
IRS1788	470361	5556560	9	0	1	1	3	0.32	7.40	5.48
IRS1789	470409	5556561	3	0	1	1	5	0.39	8.04	6.64
IRS1790	470459	5556558	8	0	1	1	7	0.36	8.12	6.14
IRS1791	470434	5556609	1	0	1	0	3	0.36	7.36	6.16
IRS1792	470408	5556609	1	0	1	0	6	0.43	9.31	7.31
IRS1793	470380	5556612	1	0	1	1	5	0.61	12.45	10.40
IRS1794	470359	5556610	1	2	1	0	8	0.43	8.86	7.33
IRS1795	470333	5556609	1	1	1	0	3	0.42	8.50	7.10
IRS1796	470308	5556610	37	2	0	0	5	0.25	7.17	4.45
IRS1797	470584	5556758	9	0	1	1	5	0.40	8.10	6.67
IRS1798	470639	5556759	2	1	1	0	4	0.24	5.47	3.82
IRS1800	470682	5556758	0	0	1	0	3	0.69	13.75	11.75
IRS1801	470278	5556601	28	0	1	1	5	0.37	8.19	6.26
IRS1802	470257	5556604	16	3	1	1	3	0.51	11.70	8.71
IRS1803	470232	5556609	27	1	1	1	3	0.29	7.31	4.96
IRS1804	470309	5556659	27	1	1	1	4	0.33	8.37	5.68
IRS1806	470634	5556712	13	0	1	0	5	0.53	11.85	9.02

Appendix 2 – Combined Exploration Data Maps

For personal use only



Appendix 2 – Combined Exploration Data Maps



For personal use only

JORC Code, 2012 Edition – Table 1

Section 1 Sampling Techniques and Data

(Criteria in this section apply to all succeeding sections.)

Criteria	JORC Code explanation	Commentary
Sampling techniques	<ul style="list-style-type: none"> Nature and quality of sampling (eg cut channels, random chips, or specific specialised industry standard measurement tools appropriate to the minerals under investigation, such as down hole gamma sondes, or handheld XRF instruments, etc). These examples should not be taken as limiting the broad meaning of sampling. Include reference to measures taken to ensure sample representivity and the appropriate calibration of any measurement tools or systems used. Aspects of the determination of mineralisation that are Material to the Public Report. In cases where ‘industry standard’ work has been done this would be relatively simple (eg ‘reverse circulation drilling was used to obtain 1 m samples from which 3 kg was pulverised to produce a 30 g charge for fire assay’). In other cases more explanation may be required, such as where there is coarse gold that has inherent sampling problems. Unusual commodities or mineralisation types (eg submarine nodules) may warrant disclosure of detailed information. 	<ul style="list-style-type: none"> Soil samples were collected by a professional team provided by an experienced exploration contractor in Canada. Individual sample locations were located with a handheld Garmin GPS unit. At each location, a 300-500 g samples were collected using a Dutch auger. Sampling equipment was brushed or wiped clean using dirt from the sample site before each sample was collected to eliminate any residue from previous samples. The sampling targeted A-horizon soil, directly below the organic/inorganic interface. Information about soil sample characteristics and the collection site were noted, including depth, drainage, slope, colour, material, water content, vegetation, and topography. Total count of radiation was tested and recorded for each sample using an RS-125 Super Spec Handheld Gamma Ray Spectrometer. Soil samples were collected on a predetermined grid, spaced 25-50 m apart along parallel lines with a 50-100 m spacing. Hand auger soil samples were collected in a similar manner to soil samples. These targeted a specific local loam layer, 0 cm – 85 cm below the organic/inorganic interface. Members of the team were trained to identify this layer and check for its presence at a sample site. Samples were collected at 12.5 m – 25 m spacing where the loam layer was identified.

Further High Grade Uranium In Soil Results From Portland Creek

Criteria	JORC Code explanation	Commentary
		<ul style="list-style-type: none"> Soil samples and hand auger soil samples were submitted to ALS Geochemical Laboratories' prep lab in Moncton, NB, Canada for analysis using the ME-MS41L and MS41L-PbIS protocols.
Drilling techniques	<ul style="list-style-type: none"> Drill type (eg core, reverse circulation, open-hole hammer, rotary air blast, auger, Bangka, sonic, etc) and details (eg core diameter, triple or standard tube, depth of diamond tails, face-sampling bit or other type, whether core is oriented and if so, by what method, etc). 	<ul style="list-style-type: none"> Not applicable due to no drilling undertaken.
Drill sample recovery	<ul style="list-style-type: none"> Method of recording and assessing core and chip sample recoveries and results assessed. Measures taken to maximise sample recovery and ensure representative nature of the samples. Whether a relationship exists between sample recovery and grade and whether sample bias may have occurred due to preferential loss/gain of fine/coarse material. 	<ul style="list-style-type: none"> Not applicable due to no drilling undertaken.
Logging	<ul style="list-style-type: none"> Whether core and chip samples have been geologically and geotechnically logged to a level of detail to support appropriate Mineral Resource estimation, mining studies and metallurgical studies. Whether logging is qualitative or quantitative in nature. Core (or costean, channel, etc) photography. The total length and percentage of the relevant intersections logged. 	<ul style="list-style-type: none"> Not applicable due to no drilling undertaken.
Sub-sampling techniques and sample preparation	<ul style="list-style-type: none"> If core, whether cut or sawn and whether quarter, half or all core taken. If non-core, whether riffled, tube sampled, rotary split, etc and whether sampled wet or dry. For all sample types, the nature, quality and appropriateness of the sample preparation technique. 	<ul style="list-style-type: none"> Not applicable due to no drilling undertaken.

Further High Grade Uranium In Soil Results From Portland Creek

Criteria	JORC Code explanation	Commentary
	<ul style="list-style-type: none"> Quality control procedures adopted for all sub-sampling stages to maximise representivity of samples. Measures taken to ensure that the sampling is representative of the in situ material collected, including for instance results for field duplicate/second-half sampling. Whether sample sizes are appropriate to the grain size of the material being sampled. 	
Quality of assay data and laboratory tests	<ul style="list-style-type: none"> The nature, quality and appropriateness of the assaying and laboratory procedures used and whether the technique is considered partial or total. For geophysical tools, spectrometers, handheld XRF instruments, etc, the parameters used in determining the analysis including instrument make and model, reading times, calibrations factors applied and their derivation, etc. Nature of quality control procedures adopted (eg standards, blanks, duplicates, external laboratory checks) and whether acceptable levels of accuracy (ie lack of bias) and precision have been established. 	<ul style="list-style-type: none"> <u>Soil Samples</u> Assay techniques are ME-MS41L and MS41L-PbIS which are a 'Total Technique' for uranium exploration. Super trace aqua regia and four acid-digestions are ideal for soil and sediment samples where background values improve anomaly identification. The Pb Isotope add-on is useful for pathfinder purposes when attempting to vector in on undercover uranium mineralisation. Standard laboratory QAQC is undertaken and monitored by the laboratory and by the company upon assay result receipt. Soil sampling QAQC was performed in the field by flushing the sampling equipment clean with soil from the sample site before being collected to eliminate any residue from previous samples. Duplicate samples were taken to maintain 5-10% QAQC. This was performed by taking a second sample from the same site but from a different hole.
Verification of sampling and assaying	<ul style="list-style-type: none"> The verification of significant intersections by either independent or alternative company personnel. The use of twinned holes. Documentation of primary data, data entry procedures, data verification, data storage (physical and electronic) protocols. Discuss any adjustment to assay data. 	<ul style="list-style-type: none"> Where appropriate the company has converted original ppm U assay data to ppm U₃O₈ using the conversion factor of 1.1792.

personal use only

Further High Grade Uranium In Soil Results From Portland Creek

Criteria	JORC Code explanation	Commentary
Location of data points	<ul style="list-style-type: none"> Accuracy and quality of surveys used to locate drill holes (collar and down-hole surveys), trenches, mine workings and other locations used in Mineral Resource estimation. Specification of the grid system used. Quality and adequacy of topographic control. 	<ul style="list-style-type: none"> All sample location data is in NAD83 UTM Zone 21N. Soil samples were surveyed by a handheld GARMIN GPS with an accuracy of +/- 3m.
Data spacing and distribution	<ul style="list-style-type: none"> Data spacing for reporting of Exploration Results. Whether the data spacing and distribution is sufficient to establish the degree of geological and grade continuity appropriate for the Mineral Resource and Ore Reserve estimation procedure(s) and classifications applied. Whether sample compositing has been applied. 	<ul style="list-style-type: none"> Soil samples were collected on a predetermined grid, spaced 25-50 m apart along parallel lines with a 50-100 m spacing. This is considered appropriate at this stage of exploration where structural and radiometric anomalism already exists warranting more targeted and tighter spacing of sample sites. Not applicable as no Mineral Resource and Ore Reserves are reported. No sample compositing has been applied.
Orientation of data in relation to geological structure	<ul style="list-style-type: none"> Whether the orientation of sampling achieves unbiased sampling of possible structures and the extent to which this is known, considering the deposit type. If the relationship between the drilling orientation and the orientation of key mineralised structures is considered to have introduced a sampling bias, this should be assessed and reported if material. 	<ul style="list-style-type: none"> The soil sampling was undertaken across and through the strike of known structural features from UAV magnetic data and radiometric anomalism within the project areas.
Sample security	<ul style="list-style-type: none"> The measures taken to ensure sample security. 	<ul style="list-style-type: none"> Field samples were collated by field staff who freighted the samples to ALS Moncton, NB, Canada for rush order analysis.
Audits or reviews	<ul style="list-style-type: none"> The results of any audits or reviews of sampling techniques and data. 	<ul style="list-style-type: none"> None carried out to date.

personal use only

Further High Grade Uranium In Soil Results From Portland Creek

Section 2 Reporting of Exploration Results

(Criteria listed in the preceding section also apply to this section.)

Criteria	JORC Code explanation	Commentary
Mineral tenement and land tenure status	<ul style="list-style-type: none"> Type, reference name/number, location and ownership including agreements or material issues with third parties such as joint ventures, partnerships, overriding royalties, native title interests, historical sites, wilderness or national park and environmental settings. The security of the tenure held at the time of reporting along with any known impediments to obtaining a licence to operate in the area. 	<ul style="list-style-type: none"> The Talus prospect is located on 036683M and 036684M. The Portland Creek uranium project comprises seven mineral claims (036683M, 036684M, 036685M, 037492M, 037490M, 037496M and 037495M). The company staked the project in 2023/24 (100% ownership) and is not aware of any royalties existing on the claims or impediments to obtaining a license to operate in the area. The claims are currently live and in good standing.
Exploration done by other parties	<ul style="list-style-type: none"> Acknowledgment and appraisal of exploration by other parties. 	<ul style="list-style-type: none"> Exploration between 1976 and 1980 was carried out by the Conwest Canadian Uranium Exploration JV. Work included radon gas sampling, a scintillometer survey, and VLF-EM and ground magnetics. Follow-up drilling using a portable “Pionjar” drill capable of drilling to 8 m depth which identified a small, high grade uranium anomaly (so-called “loam deposit”). Only very sparse details survive on this drilling program with no assay results or drill hole locational data able to be verified under the JORC code. Five diamond holes were drilled. Partial results have been found for only one of these, which reported unmineralized granite. Subsequent exploration in 2007 included Ucore flying an airborne IMPULSE survey and collecting 8 rock samples and in 2009, Novtem Airborne Geophysics flew a magnetic survey. The property was abandoned shortly after. Current modern exploration is now being undertaken thoroughly by Infini Resources and includes soil, biogeochemical, spectrometer, LiDAR and UAV magnetic surveys in addition to geological mapping with rock sampling.

Further High Grade Uranium In Soil Results From Portland Creek

Criteria	JORC Code explanation	Commentary
Geology	<ul style="list-style-type: none"> Deposit type, geological setting and style of mineralisation. 	<ul style="list-style-type: none"> The target uranium deposit type is not well understood at this early stage of exploration but could include high grade unconformity type (e.g. Cigar and Mclean Lake in Saskatchewan), alaskite type (e.g. Rossing, Husab in Namibia) and structurally controlled albitite type (aka shear zone hosted). Infini's claims straddle an inferred thrust contact between middle Proterozoic granitoid suites and Ordovician carbonate dominant rocks. The granites are known to be anomalously radioactive, in part due to high Th content.
Drill hole Information	<ul style="list-style-type: none"> A summary of all information material to the understanding of the exploration results including a tabulation of the following information for all Material drill holes: <ul style="list-style-type: none"> easting and northing of the drill hole collar elevation or RL (Reduced Level – elevation above sea level in metres) of the drill hole collar dip and azimuth of the hole down hole length and interception depth hole length. If the exclusion of this information is justified on the basis that the information is not Material and this exclusion does not detract from the understanding of the report, the Competent Person should clearly explain why this is the case. 	<ul style="list-style-type: none"> Incomplete details of previous drilling are available, and locations and results of most holes drilled by the Conwest JV are completely unknown. The limited historical exploration records that exist over the project are publicly available in the Government of Newfoundland's GeoScience OnLine system under the report IDs: 0121/03/0125 and NFLD/3082.
Data aggregation methods	<ul style="list-style-type: none"> In reporting Exploration Results, weighting averaging techniques, maximum and/or minimum grade truncations (eg cutting of high grades) and cut-off grades are usually Material and should be stated. 	<ul style="list-style-type: none"> Not applicable due to no drilling undertaken.

Further High Grade Uranium In Soil Results From Portland Creek

Criteria	JORC Code explanation	Commentary
	<ul style="list-style-type: none"> Where aggregate intercepts incorporate short lengths of high grade results and longer lengths of low grade results, the procedure used for such aggregation should be stated and some typical examples of such aggregations should be shown in detail. The assumptions used for any reporting of metal equivalent values should be clearly stated. 	
Relationship between mineralisation widths and intercept lengths	<ul style="list-style-type: none"> These relationships are particularly important in the reporting of Exploration Results. If the geometry of the mineralisation with respect to the drill hole angle is known, its nature should be reported. If it is not known and only the down hole lengths are reported, there should be a clear statement to this effect (eg 'down hole length, true width not known'). 	<ul style="list-style-type: none"> Not applicable due to no drilling undertaken.
Diagrams	<ul style="list-style-type: none"> Appropriate maps and sections (with scales) and tabulations of intercepts should be included for any significant discovery being reported. These should include, but not be limited to a plan view of drill hole collar locations and appropriate sectional views. 	<ul style="list-style-type: none"> Appropriate diagrams are included in the main body of this report. No significant discovery is being reported.
Balanced reporting	<ul style="list-style-type: none"> Where comprehensive reporting of all Exploration Results is not practicable, representative reporting of both low and high grades and/or widths should be practiced to avoid misleading reporting of Exploration Results. 	<ul style="list-style-type: none"> Reporting of all geochemical results is considered balanced with results of both low and high analytes reported. Assay results reported do not include the company's internal QAQC samples taken as per industry standards practices.
Other substantive exploration data	<ul style="list-style-type: none"> Other exploration data, if meaningful and material, should be reported including (but not limited to): geological observations; geophysical survey results; geochemical survey results; bulk samples – size and method of treatment; metallurgical test results; bulk density, groundwater, geotechnical and rock characteristics; potential deleterious or contaminating substances. 	<ul style="list-style-type: none"> No additional meaningful and material exploration data has been excluded from this report.

Further High Grade Uranium In Soil Results From Portland Creek

Criteria	JORC Code explanation	Commentary
Further work	<ul style="list-style-type: none"> The nature and scale of planned further work (eg tests for lateral extensions or depth extensions or large-scale step-out drilling). Diagrams clearly highlighting the areas of possible extensions, including the main geological interpretations and future drilling areas, provided this information is not commercially sensitive. 	<ul style="list-style-type: none"> Review of uranium targets at the Portland Creek Project is ongoing, with key target areas considered for infill geochemical sampling, geological mapping, and drill testing. Appropriate diagrams are included in the main body of this report.