

3 October 2024

ASX Market Announcements

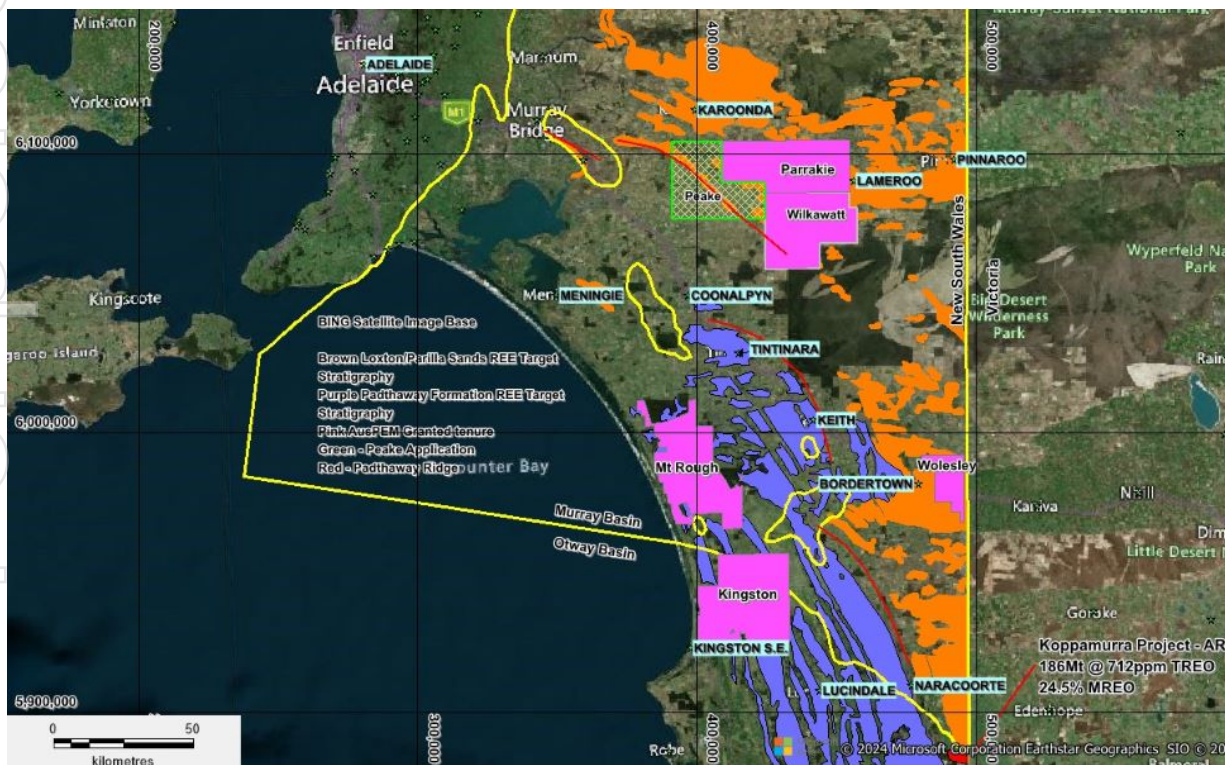
NEW TENEMENT GRANTED FOR RARE EARTH EXPLORATION EL 7015 PEAKE, MURRAY BASIN, LIMESTONE COAST, SOUTH AUSTRALIA

Company Total Land Position over REE Prospective Loxton/Parilla Sands and Padthaway Formation in Limestone Coast is now approximately 4,306 km²

Ausmon Resources Limited (“Company”) is pleased to announce the grant of an additional tenement EL 7015 Peake for a period of 6 years to September 2030 covering 757 km² adjacent to the western boundaries of the Company’s EL 6795 Parrakie and EL 6975 Wilkawatt approximately 145 kms southeast of Adelaide within the Murray Basin, Limestone Coast, South Australia (**Figure 1**).

The 6 granted tenements of the Company now cover a very significant area of 4,306 km² over the Rare Earth Elements (“**REEs**”) prospective Loxton/Parilla Sands (Parrakie, Wolseley, Wilkawatt and Peake tenements) and Padthaway Formation (Mt Rough and Kingston tenements).

The Company is targeting the Murray and Otway Basins hosted Loxton/Parilla Sands and Padthaway Formation for REE mineralisation where Australian Rare Earths, exploring to the south of the Company’s tenements has reported significant exploration success with estimated JORC 2012 resource of 236Mt @ 748 ppm Total Rare Earth Oxides (TREO) (AR3 ASX Release on 30th September 2024).



**Figure 1: Location of tenements (pink shade) within the Murray and Otway Basins in South Australia
 New tenement Peake within green boundary with green hatch**

The Company has prepared PEPR (program for environment protection and rehabilitation) documents for lodgement with the Department of Energy and Mining of South Australia (DEM) for the next drilling program to be conducted in Limestone Coast. Following approval of the program the crew, mainly locally based, will be organised for the drilling program to commence.

Competent Person Statement

The information in the report above that relates to Exploration Results, Exploration Targets and Mineral Resources is based on information compiled by Mr Mark Derriman, who is the Company's Consultant Geologist and a member of The Australian Institute of Geoscientists (1566). Mr Mark Derriman has sufficient experience that is relevant to the style of mineralization and type of deposit under consideration and to the activities which he is undertaking to qualify as a Competent Person as defined in the 2012 Edition of the Australasian Code for Reporting of Exploration Results, Exploration Targets, Mineral Resources and Ore Reserves. Mr Mark Derriman consents to the inclusion in this report of matters based on his information in the form and context in which it appears.

Forward-Looking Statement

This document may include forward-looking statements. Forward-looking statements include, but are not limited to, statements concerning planned exploration program and other statements that are not historical facts. When used in this document, the words such as "could", "plan", "estimate", "expect", "intend", "may", "potential", "should" and similar expressions are forward-looking statements. Although Ausmon Resources Limited believes that its expectations reflected in these forward-looking statements are reasonable, such statements involve risks and uncertainties and no assurance can be given that actual results will be consistent with these forward-looking statements.

Authorised by:

Eric Sam Yue

Executive Director/Secretary

T: 02 9264 6988

E: office@ausmonresources.com.au