



Optimised Production Plan for the Mt Boppy Gold Mine Cobar Basin, New South Wales

Corporate Presentation - 30 September 2024

Disclaimer

This disclaimer applies to this presentation and the information contained in it (the **Presentation**). By reading this disclaimer you agree to be bound by it. The Presentation has been prepared by Manuka Resources Limited and relates to its subsidiaries, related parties and any new assets or entities subsequently acquired or incorporated (collectively the **Company**). The Presentation was prepared on 30 September 2024 and the information in it is subject to change without notice.

Purpose

The Presentation is for information purposes only and is an overview of the Company and its assets at the time of preparation. This Presentation does not contain all information necessary to make an investment decision or that would be required in a prospectus or product disclosure statement prepared in accordance with the requirements of the Corporations Act 2001 (Cth) (**Corporations Act**). The Presentation is of a general nature and does not purport to be complete or verified by the Company or any other person.

Distribution outside Australia

Distribution or release of this document outside Australia may be restricted by law. This document may only be distributed or released to a person that is not in the United States except as permitted under the U.S. Securities Act. Persons who come into possession of this document who are not in Australia should seek advice on and observe any such restrictions. Any failure to comply with such restrictions may constitute a violation of applicable securities laws.

Not an offer or financial product advice

The Presentation does not constitute an offer, invitation, solicitation or recommendation with respect to the purchase or sale of any security in the Company nor does it constitute financial product advice. The Presentation is not a prospectus, product disclosure statement or other offer document under Australian law or under any other law. The Presentation has not been filed, registered or approved by any regulatory authority in any jurisdiction. The Presentation is not intended to be relied upon as advice or a recommendation to investors and does not take into account the investment objectives, financial situation, taxation situation or needs of any particular investor.

An investor must not act on the basis of any matter contained in the Presentation and must make its own assessment of the Company and conduct its own investigations and analysis. Investors should assess their own individual financial circumstances and consider talking to a financial adviser, professional adviser or consultant before making any investment decision. Neither this Presentation nor anything contained in it forms the basis of any contract or commitment and no agreement to subscribe for securities will be entered into on the basis of this Presentation.

No guarantee, representation or warranty

While reasonable care has been taken in relation to the preparation of the Presentation, none of the Company or their respective directors, officers, employees, contractors, agents, or advisers nor any other person (Limited Party) guarantees or makes any representations or warranties, express or implied, as to or takes responsibility for, the accuracy, reliability, completeness or fairness of the information, opinions, forecasts, reports, estimates and conclusions contained in the Presentation. No Limited Party represents or warrants that the Presentation is

complete or that it contains all information about the Company that a prospective investor or purchaser may require in evaluating a possible investment in the Company or acquisition of shares in the Company. To the maximum extent permitted by law, each Limited Party expressly disclaims any and all liability, including, without limitation, any liability arising out of fault or negligence, for any loss arising from the use of or reliance on information contained in the Presentation including representations or warranties or in relation to the accuracy or completeness of the information, statements, opinions, forecasts, reports or other matters, express or implied, contained in, arising out of or derived from, or for omissions from the Presentation including, without limitation, any financial information, any estimates or projections and any other financial information derived therefrom.

Forward-looking statements

The Presentation includes forward-looking statements and comments about future events, including the Company's expectations about the performance of its businesses. Forward-looking words such as "expect", "should", "could", "may", "predict", "plan", "will", "believe", "forecast", "estimate", "target" or other similar expressions are intended to identify forward-looking statements. Such statements involve known and unknown risks, uncertainties, assumptions and other important factors, many of which are beyond the control of the Company and which may cause actual results, performance or achievements to differ materially from those expressed or implied by such statements. Forward-looking statements are provided as a general guide only, and should not be relied on as an indication or guarantee of future performance. Given these uncertainties, recipients are cautioned to not place undue reliance on any forward-looking statement. Subject to any continuing obligations under applicable law, the Company disclaims any obligation or undertaking to disseminate any updates or revisions to any forward-looking statements in the Presentation to reflect any change in expectations in relation to any forward-looking statements or any change in events, conditions or circumstances on which any such statement is based. No Limited Party or any other person makes any representation, or gives any assurance or guarantee that the occurrence of the events expressed or implied in any forward-looking statements in the Presentation will occur.

Past performance

Past performance is not indicative of future performance and no guarantee of future returns is implied or given.

Previously reported information

The information in this presentation that relates to previously reported Exploration Results, Exploration Targets, Mineral Resources and Ore Reserves is extracted from the Company's ASX announcements noted in the text of the presentation and are available to view on the Company's website. The Company confirms that, other than mining depletion, it is not aware of any new information or data that materially affects the information included in the original announcements and, in the case of estimates of Mineral Resources and Ore Reserves, that all material assumptions and technical parameters underpinning the estimates in the relevant announcement continue to apply and have not materially changed. The Company confirms that the form and context in which the Competent Person's findings are presented have not been materially altered.

Corporate Summary



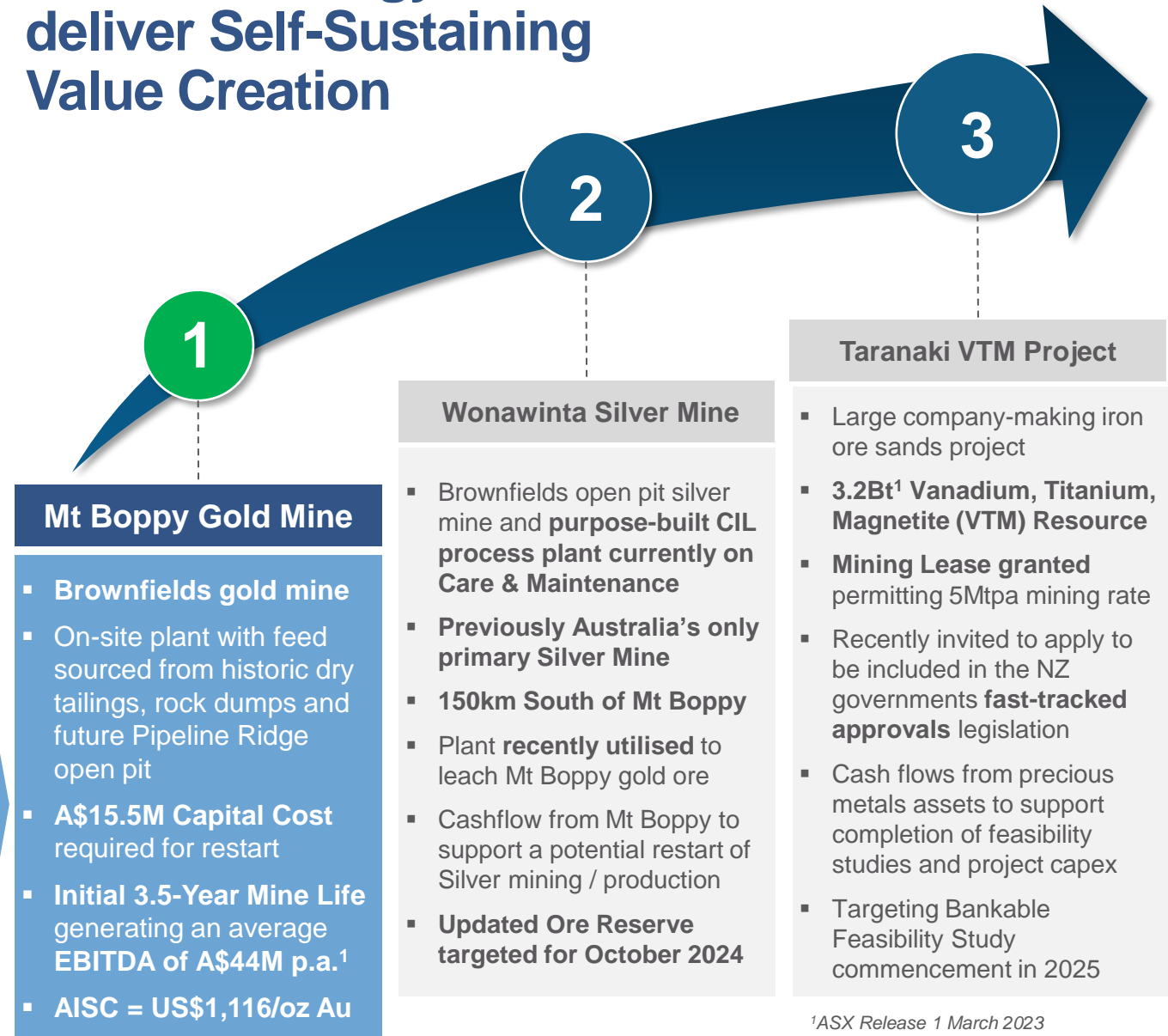
About Manuka

- ✓ ASX listed mine operator, developer and explorer
- ✓ Near-term production from **Gold** and **Silver** assets located in the prolific **Cobar Basin, NSW**
- ✓ Large **Vanadium-rich Iron Sands Resource** located offshore of the Taranaki Bight, New Zealand

The Company's current focus is bringing the **Mt Boppy Gold Mine** back into production in **CQ1-2025**

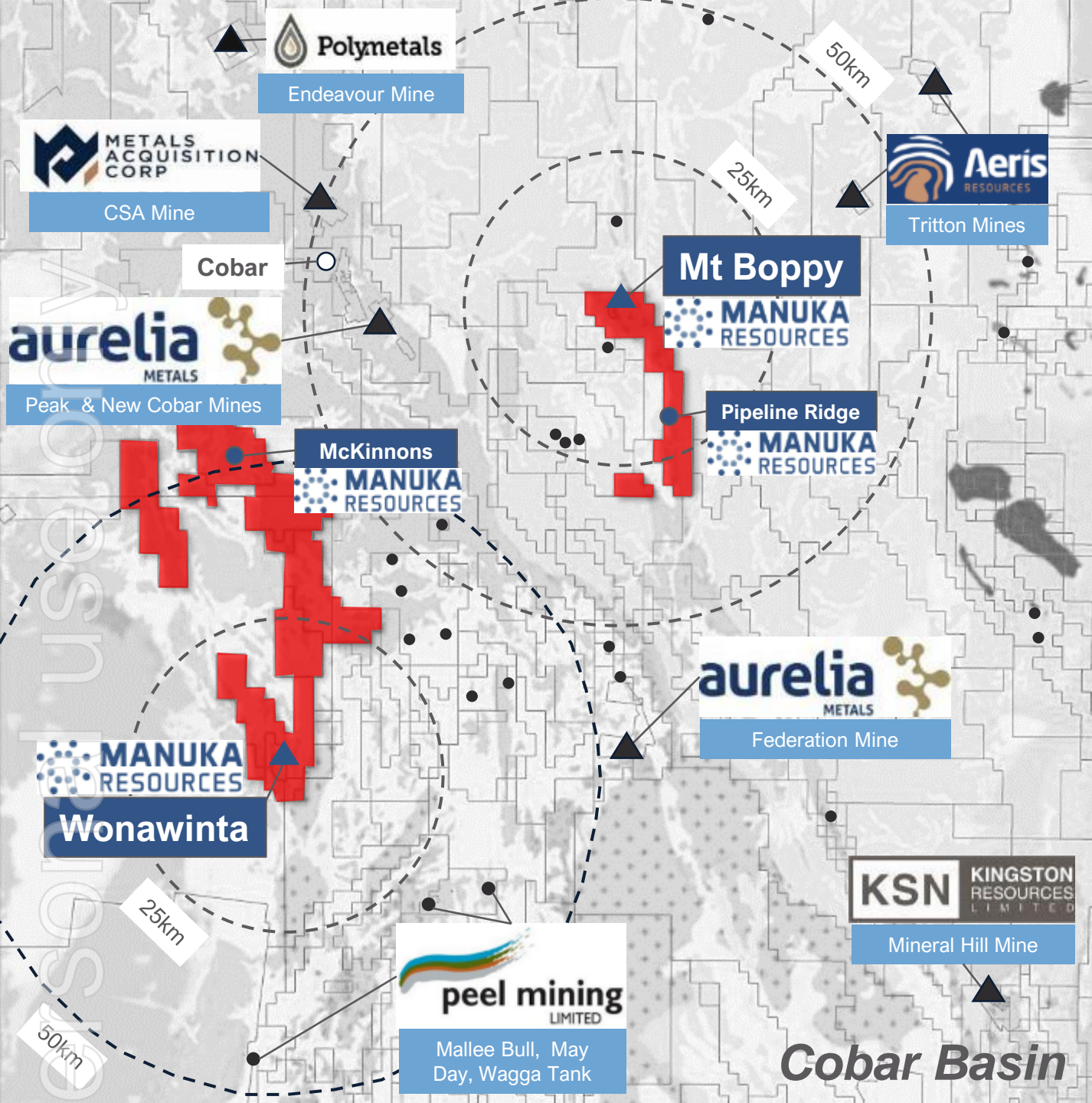
1. Financial Forecasts and the Production Target should be read in conjunction with the cautionary statement on Page 12 and the Material Assumptions Presentation in Appendix 1.

Phased Strategy to deliver Self-Sustaining Value Creation



¹ASX Release 1 March 2023

MKR hold Precious Metals Assets of Strategic Value in a Tier -1 Mining Jurisdiction



- The proposed Mt Boppy and existing Wonawinta production facilities provide:
 - a means to monetise otherwise stranded deposits located within current **+1,000km² tenure**; and
 - strategic opportunity for commercial toll treating arrangements with third parties.
- The lengthy approvals timelines to receive environmental consents and Mining Leases makes existing productive tenure valuable.
- Proposed Leaching (Stage 1) and Flotation (Stage 2) processing capability at Mt Boppy provides flexibility to treat Oxide ore and Fresh ore sources.
- Wonawinta Silver Plant can be augmented with flotation capability to extract value from deeper base metals sulphides typical of Mississippi Style Lead deposits both on site and from other nearby sulphide ore sources.



- ■ Manuka Projects / Tenure
- □ Other Resources / Project Mining and Exploration Licenses

Taranaki VTM Project (100% Manuka)

Large Vanadium-rich Iron Sands Resource located in the Taranaki Bight, New Zealand

It has a **granted mining license**, MP55581, permitting production of 5Mtpa

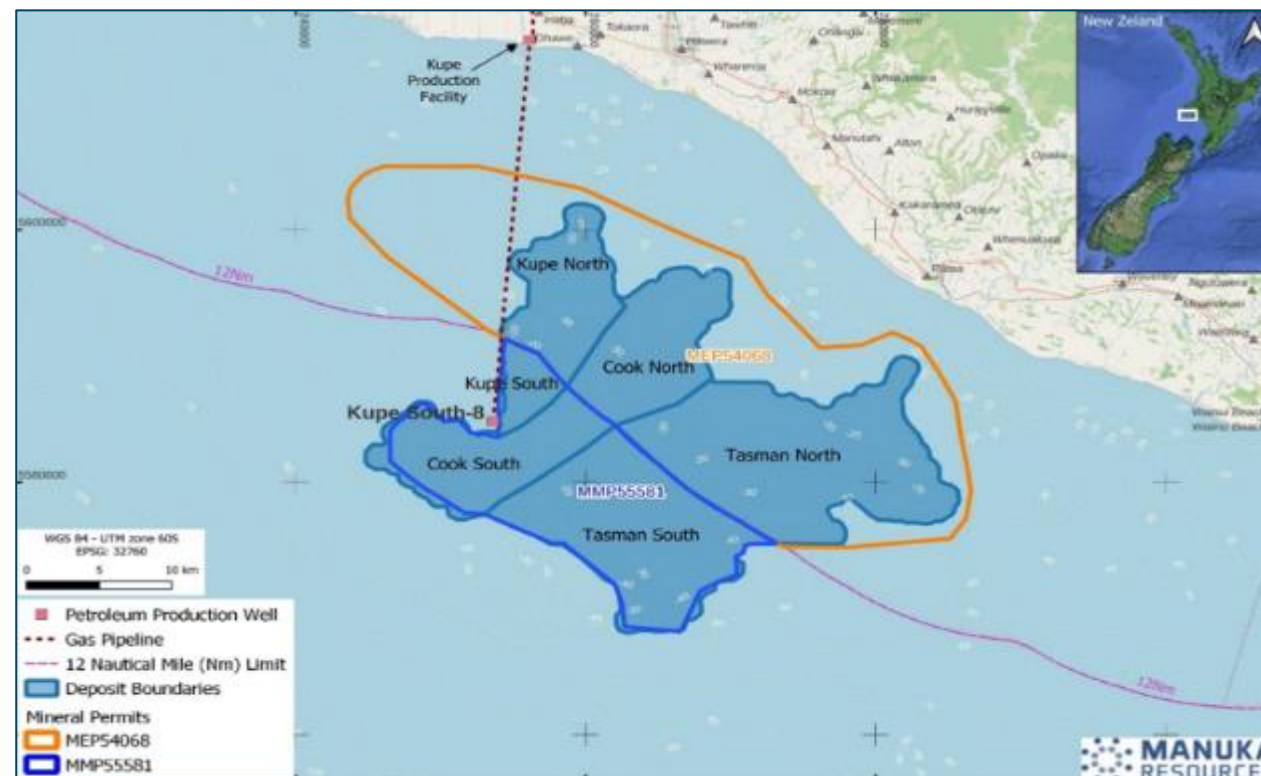
Manuka invited to submit an application for the Project to be included in the **New Zealand Government's Fast Track Approvals Bill**

The objective of the Bill is to provide a streamlined decision-making process to facilitate the delivery of infrastructure and **development projects with significant regional or national benefits**

Resource ¹	Ore	Fe ₂ O ₃	TiO ₂	V ₂ O ₅
Classification	(Bt)	(%)	(%)	(%)
Indicated & Inferred	3.2	10.17	1.03	0.05

¹ASX Release 1 March 2023

- The Taranaki VTM Project is located 22 km to 36 km offshore in New Zealand's EEZ, or Exclusive Economic Zone, outside the 12 nautical limit from the shoreline, in waters 20m to 50m deep (area 243km²).
- On granting of final government approvals to operate the Company will complete its Bankable Feasibility Study on the Project.
- **The Project is anticipated to sit in the lowest quartile of the iron ore production cost curve.**

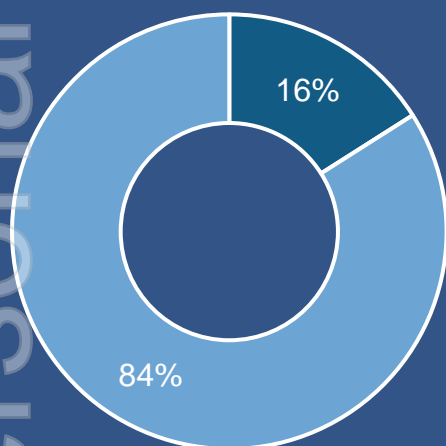


Corporate Summary

Capital Structure

Shares Outstanding	780M
Options Outstanding	214M
Share Price	A\$0.037
Market Capitalisation	A\$28.9M
Cash <small>As at 30 June 2024</small>	A\$1.9M
Debt Outstanding <small>As at 30 June 2024</small>	~A\$29.9M
<ul style="list-style-type: none">A\$18.1M TransAsia Pty Ltd - Senior Debt FacilityUS\$6.5M Tennant Metals SA Pty Ltd - Trade Finance Facility	

Ownership Breakdown:



■ Board & Management
■ Other

Share Price History



Share Price Catalysts:

- ✓ Continued strength in the Gold and Silver markets
- ✓ Near Term Gold Production at Mt Boppy
- ✓ Ore Reserve Update for the Wonawinta Silver Mine
- ✓ Refinance of the TransAsia Debt Facility
- ✓ Further progress through the VTM Project approval process

Board of Directors



Dennis Karp
Executive Chairman

Dennis was Head of Trading at HSBC Australia prior to joining Tennant Limited in 1997, one of Australia's largest physical commodities trading companies with operations in Asia and Europe.

He was a principal shareholder of Tennant Metals until 2010, and a director until December 2014.

Dennis led the syndicate which purchased the Manuka assets in 2016.

He holds a Bachelor of Commerce from the University of Cape Town.



Alan Eggers
Executive Director

Alan is a geologist with over 40 years of local and international experience.

Founding director of Summit Resources Ltd which they built from listing on the NZX in 1987 into an ASX top 200 company and an ultimate takeover by Paladin Energy for A\$1.2B in 2007.

Alan holds Bachelor of Science, Honours and Master of Science degrees from Victoria University of Wellington. He is a Fellow of the Society of Economic Geologists, and a member of AusIMM, & Australian Institute of Geoscientists.



Anthony McPaul
Non-Executive Director

Anthony (Tony) is a senior mining executive with over 40 years' experience in mining operations and mineral processing (both underground and open pit operations).

Tony was most recently the general manager for Newcrest's (now Newmont's) Cadia Valley Operations, in Orange NSW. Tony formally retired in 2016.

Tony has sat on a range of Boards and industry bodies including the Minerals Council Executive Committee and Mineral Industry Advisory Council. He is qualified in automotive engineering from Goulburn TAFE.



John Seton
Non-Executive Director

John is an Auckland based lawyer with extensive experience in commercial law and the mineral resources sector. He was a director of Summit Resources Limited until its sale in 2007, as well as being a director of a number of other ASX and NZX listed private companies.

John was a former Chairman of the Vietnam/New Zealand Business Council.

John holds a Bachelor of Laws from Victoria University, Wellington, and a Masters of Law (Honours) from the University of Auckland and was a Chartered Fellow of the New Zealand Institute of Directors until 2023.

Mt Boppy Gold Mine



Mt Boppy Gold Mine – Overview

Historically one of NSW's richest gold mines, having produced ~500,000 oz Gold at ~15 g/t Au

- Set within the Canbelego – Mineral Hill Rift Zone of the prolific Cobar Super Basin, 43 km east of the Cobar and 640 km west of Sydney.
- **2019:** Acquired by Manuka Resources.
- **Between April 2020 and February 2022:** Manuka mined 560 kt from the Open Pit at 3.02 g/t Au to recover 41 koz Au via the modified Wonawinta Plant.
- **From June 2023 to November 2023:** Manuka reclaimed and screened Mt Boppy ROM Stockpiles and Rock Dump Oxide ore which was leached at Wonawinta.
- **December 2023:** Production suspended due to grade variability when reclaiming the main Rock Dump, combined with inefficiencies associated with trucking and processing ore at the Wonawinta Plant.
- **November 2023 to March 2024:** Manuka completed a Sonic Drilling program and subsequent Mineral Resource Estimate update to improve confidence in the grade and ore type distribution of the main Rock Dump and TSF3.
- **April 2024:** Manuka outlined an update updated development plan involving a modular, on-site processing facility installed at Mt Boppy
- Major environmental approvals in place for the **restart of doré production at Mt Boppy by CQ1-2025**
- Camp is located on site to support construction and operations.



View of the Mt Boppy Open Pit and Rock Dumps



Existing Camp located at Mt Boppy

Mt Boppy Gold Mine – Project Highlights

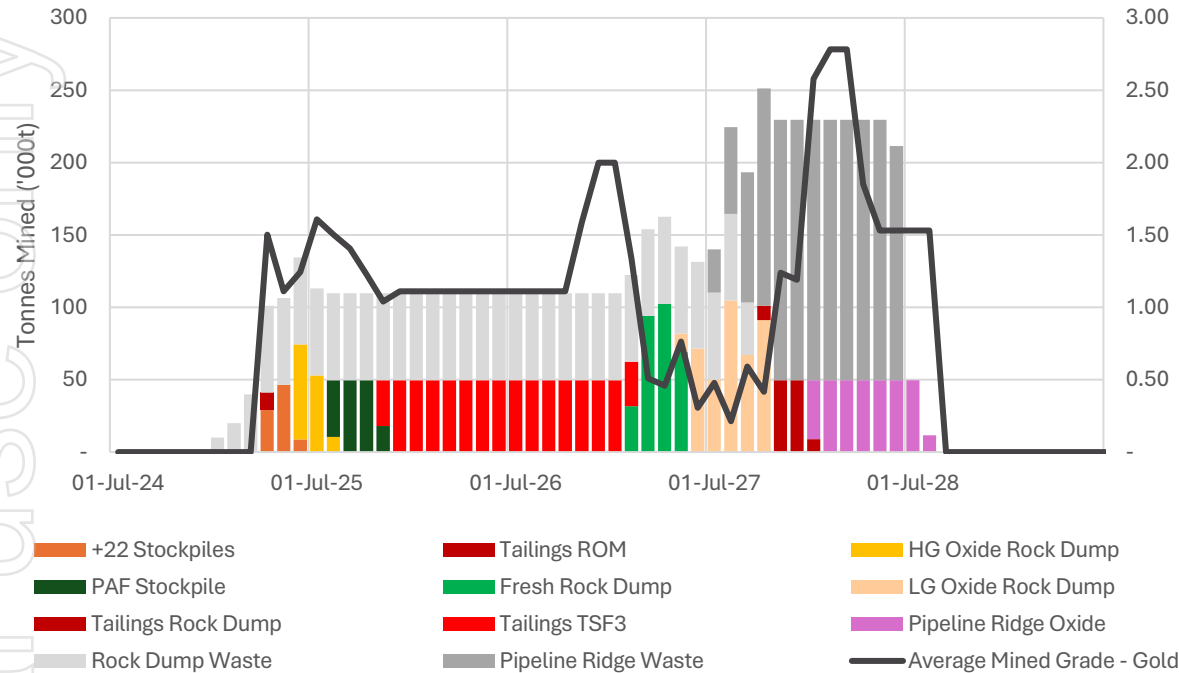
Low Capex, High-Margin, Near-term Production of Precious Metals at a Proven Brownfields Site

✓	Additional testwork and engineering delivers an optimised and simplified 100t/h gold processing plant
✓	Low Upfront Capital Cost of A\$15.5M required for first gold doré production in CYQ1-2025
✓	Initial gold production via Oxide Ore Leaching Plant on site at Mt Boppy (Stage 1 Plant)
✓	Flotation/Wet screening capability added to plant within 12 months to treat Fresh/Tails Ore types (Stage 2/3 Plant)
✓	Initial 3.5-Year Mine Plan comprising low strip, free-dig ore sources including existing stockpiles / tailings
✓	~67,000oz of payable gold produced in doré and silver credits¹
✓	Forecast AISC of US\$1,116/oz Au¹ enabling high operating margin (average annualised EBITDA of A\$44M pa¹)
✓	Clear opportunities to extend the mine life via self-funded investigations and exploration including the brownfields Mt Boppy Open Pit and Boppy South
✓	Cash flows from Mt Boppy to support Exploration, restart of the Wonawinta Silver Mine and progress the Taranaki VTM Project approvals and technical feasibility

1. Financial Forecasts and the Production Target should be read in conjunction with the cautionary statement on Page 12 and the Material Assumptions Presentation in Appendix 1.

Mt Boppy Gold Mine – Production Target

Scheduling of Oxide and Fresh Ore to Support Dual Plant Capability Strategy



The Production Target underpinning Financial Forecasts presented within this Presentation comprises 62% Indicated Resources, 22% Inferred Resources and 15% Exploration Target. There is a low level of geological confidence associated with Inferred Resources and there is no certainty that further exploration work will result in the conversion of Inferred Resources to Indicated Resources or return the same grade and tonnage distribution. The potential quantity and grade of an Exploration Target is conceptual in nature, there has been insufficient exploration to determine a mineral resource and there is no certainty that further exploration work will result in the determination of Mineral Resources or that the production target itself will be realised. The Exploration Target relates to the Pipeline Ridge Ore only. The Company has determined that sufficient data exists to include a portion of the Pipeline Ridge Exploration Target in the Production Target and furthermore that is it not a determining factor in the economic viability of the Project. The estimated Mineral Resource and Exploration Target underpinning the Production Target have been prepared by a Competent Person in accordance with the requirements in the JORC Code.

Source	Type	Unit	Total	0	1	2	3	4
Rock Dump Waste	Waste	kt	1,846	70	720	720	336	-
Pipeline Ridge Waste	Waste	kt	1,752	-	-	-	1,230	522
Total Waste Tonnes		kt	3,598	70	720	720	1,566	522
+22mm Stockpiles	Oxide	kt	84	-	84	-	-	-
Tailings ROM	Oxide	kt	12	-	12	-	-	-
HG Oxide Rock Dump	Oxide	kt	129	-	129	-	-	-
PAF Stockpile	Fresh	kt	157	-	157	-	-	-
Fresh Rock Dump	Fresh	kt	297	-	-	126	172	-
LG Oxide Rock Dump	Oxide	kt	397	-	-	-	397	-
Tailings Rock Dump	Tailings	kt	118	-	-	-	118	-
Tailings TSF3	Tailings	kt	758	-	230	528	-	-
Pipeline Ridge Oxide	Oxide	kt	350	-	-	-	140	210
Total Ore Tonnes		kt	2,303	-	613	653	827	210
Mined Gold Grade		g/t	1.17	-	1.26	1.22	0.95	1.61
<i>*Rock Dumps to undergo selective screening</i>								
Mill Feed		kt	1,987	-	584	596	596	210
Milled Gold Grade		g/t	1.30	-	1.26	1.30	1.22	1.61

Mining requires no drill & blast with ore reclaimed by contractors using 30t excavator and hauling via 30-40t moxies.

Mt Boppy Gold Mine – Cash Flow Forecast¹

Low Capex Return to Gold Production, delivering an average annualised EBITDA of A\$44M

Production Year	Unit	Total	0	1	2	3	4
Gold in Doré	koz	67	-	19	20	19	9
Gold Price	US\$/oz		2,650	2,650	2,650	2,650	2,650
Exchange Rate	A\$:US\$		0.70	0.70	0.70	0.70	0.70
Total Revenue	A\$M	253.0	-	73.1	75.5	71.5	32.9
Royalties	A\$M	(5.1)	-	(1.5)	(1.5)	(1.4)	(0.7)
Mining	A\$M	(32.8)	-	(7.4)	(6.5)	(14.2)	(4.8)
Processing	A\$M	(51.3)	-	(15.4)	(16.7)	(14.3)	(4.8)
G&A	A\$M	(13.8)	-	(4.0)	(4.0)	(4.0)	(1.7)
EBITDA	A\$M	150.0	-	44.8	46.8	37.5	20.9
Pre-Production Opex	A\$M	(2.2)	(2.2)	-	-	-	-
Pre-Production Capex	A\$M	(13.3)	(13.3)	-	-	-	-
Sustaining Capex	A\$M	(3.6)	-	(3.6)	-	-	-
Net Project Cashflow	A\$M	130.9	(15.5)	41.2	46.8	37.5	20.9
AISC	US\$/oz	1,116	-	1,157	1,007	1,259	968
Mining	A\$/t mined	16.5	-	12.6	10.9	23.8	23.0
Processing	A\$/t ore	25.8	-	26.4	28.0	24.1	22.9
G&A	A\$/t ore	6.9	-	6.9	6.8	6.8	8.0

Capital Cost Estimates	A\$M
General Site Costs	1.4
Site Infrastructure & Mining Equipment	4.6
100tph Crushing/Screening, Milling, CIL Circuit	7.9
Pre-Production Operating Costs	2.3
Stage 2: Flotation, Conc Regrind, Intensive Leach	2.8
Stage 3: Wet Screening	0.2
Total Capex (including contingency)	19.2
Pre-Production Capex	15.5
Sustaining Capex	3.6

Capital Cost minimised and execution timeline derisked through the relocation of existing assets including the 100tph Ball Mill and 30tph Regrind Mill located at Wonawinta.

1. Financial Forecasts and the Production Target should be read in conjunction with the cautionary statement on Page 12 and the Material Assumptions Presentation in Appendix 1.

Mt Boppy Gold Mine – Processing Infrastructure

Low Capex Strategy supported by leverage existing asset and opportunistic equipment acquisitions



Photo showing the Wonawinta 100tph Ball Mill (left). Photo showing Intensive Leach Reactor (right) purchased by Manuka at auction.

Mt Boppy Gold Mine – Processing Infrastructure

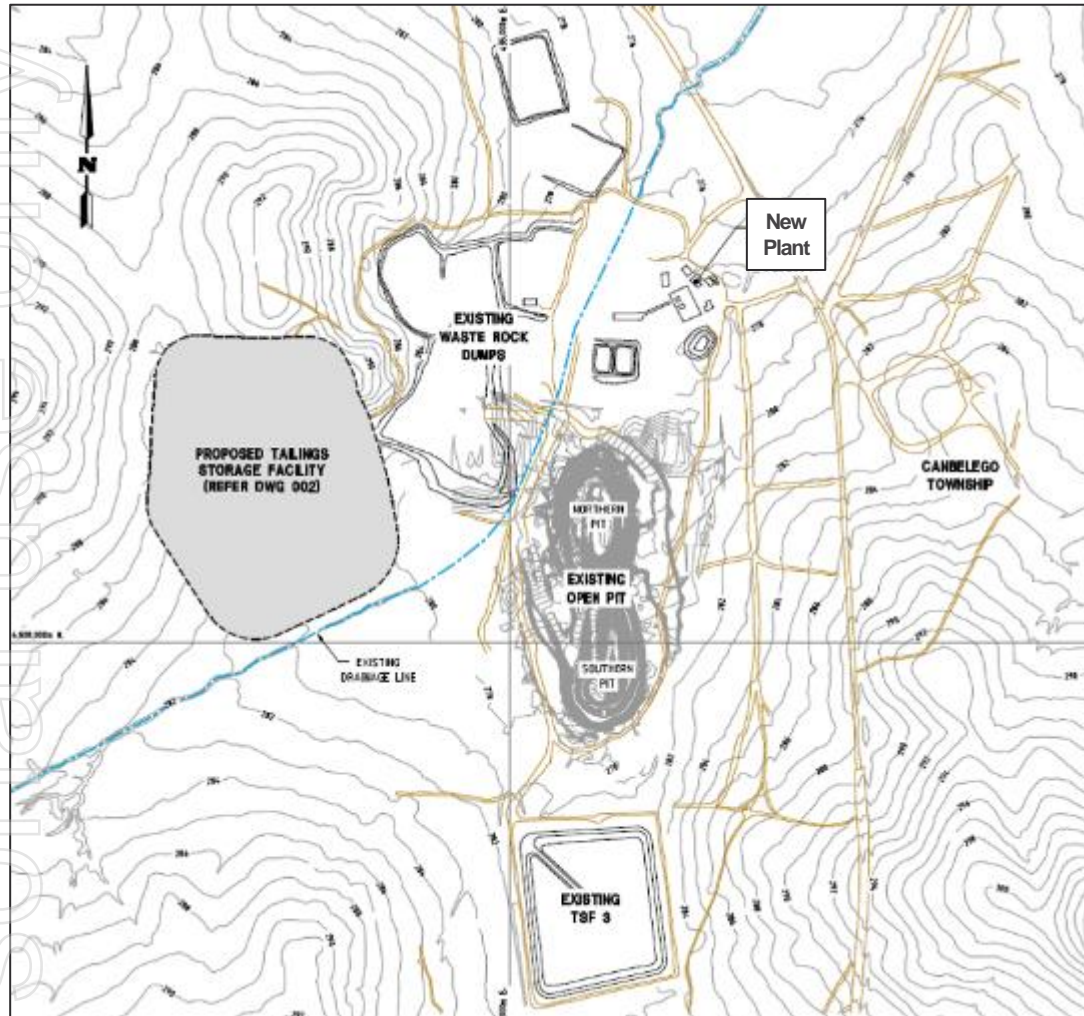
Low Capex Strategy supported by leverage existing asset and opportunistic equipment acquisitions



Photo of the McCoskey R230 'reclaimer' mobile screening plant at Mt Boppy.

Mt Boppy Gold Mine - Site Layout and Infrastructure

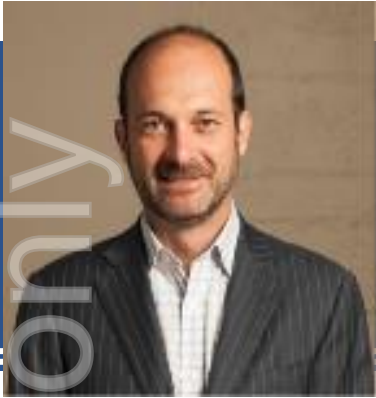
Brownfields Site with a Wealth of Existing Infrastructure



Mt Boppy Site Layout

- The new Mt Boppy processing plant will be located on the pad at the site of the previously decommissioned Mt Boppy CIL plant.
- Site power requirements will be provided by portable diesel generation sets.
- Site water requirements will be accommodated via a production borehole and water contained in the Mt Boppy Open Pit.
- Access to site is via existing sealed roads.
- Personnel will be accommodated in the 48-bed mining camp already established at the Mt Boppy mine site.
- A new 500,000 m³ (2 to 3-year capacity) tailings storage facility will be constructed west of the main Rock Dump.
- Limited earthworks required to clean up ROM Pad and establishing plant site.
- All ancillary infrastructure is already in place including administration & exploration offices, communications, warehousing, core yards and mobile equipment workshop.

Highly Experienced Project Execution and Operations Team



Haydn Lynch
Chief Operating Officer

Over 25 years of experience in M&A, financial markets and private equity, with a substantive track record in the origination and execution of domestic and cross-border transactions in metals and mining in Australia, Africa, Japan, China, and Mongolia.

Haydn's Senior management experience includes Bankers Trust Australia, Investec Bank, RBC Capital Markets and Southern Cross Equities.

Haydn has degrees in Mechanical Engineering and Economics from the University of Queensland and a Masters in Commerce from the University of New South Wales.



Phil Bentley
Chief Geologist / Project Manager

Phil has 40 years of experience in the mining industry in New Zealand, South Africa and Australia, in both senior geological positions as well as in senior management and director capacities.

Executive roles include Randgold Resources and Randgold & Exploration (Chief Geologist), Trafigura Mining Services (Global Head of Exploration), CSA Global South Africa (Principal Geologist Africa) and Asanko Gold.

Phil is a Qualified person under NI 43-101 (Canada) and JORC (Australia) and is a Fellow of the South African Geological Society.

Phil has completed a Bachelor of Science (Hon.) in Geology at Victoria University of Wellington and a Masters of Science in Economic Geology at Victoria University of Wellington and a Masters of Science in Mineral Exploration from Rhodes University, Grahamstown (SA).



Dieter Engelhardt
Chief Metallurgist

Dieter has over 30 years of experience in the mining industry including roles at Telfer Gold Mine (Senior Metallurgist), Northparkes Mines (Senior Metallurgist), McKinnons Gold Mine (Resident Manager), and the CSA Mine (Manager Ore Processing).

Dieter was employed by Newcrest Mining Ltd (now Newmont) in various roles including Manager Ore Processing and Principal Metallurgist.

Dieter completed a Bachelor of Applied Science in Primary and Secondary Metallurgy at the University of South Australia in 1984.



Byron Steyn
Chief Financial Officer

Byron has over 25 years of experience in finance, with more than 10 years in various Group CFO roles.

He previously worked in Group Audit at Commonwealth Bank of Australia and in various financial accounting and external auditing roles.

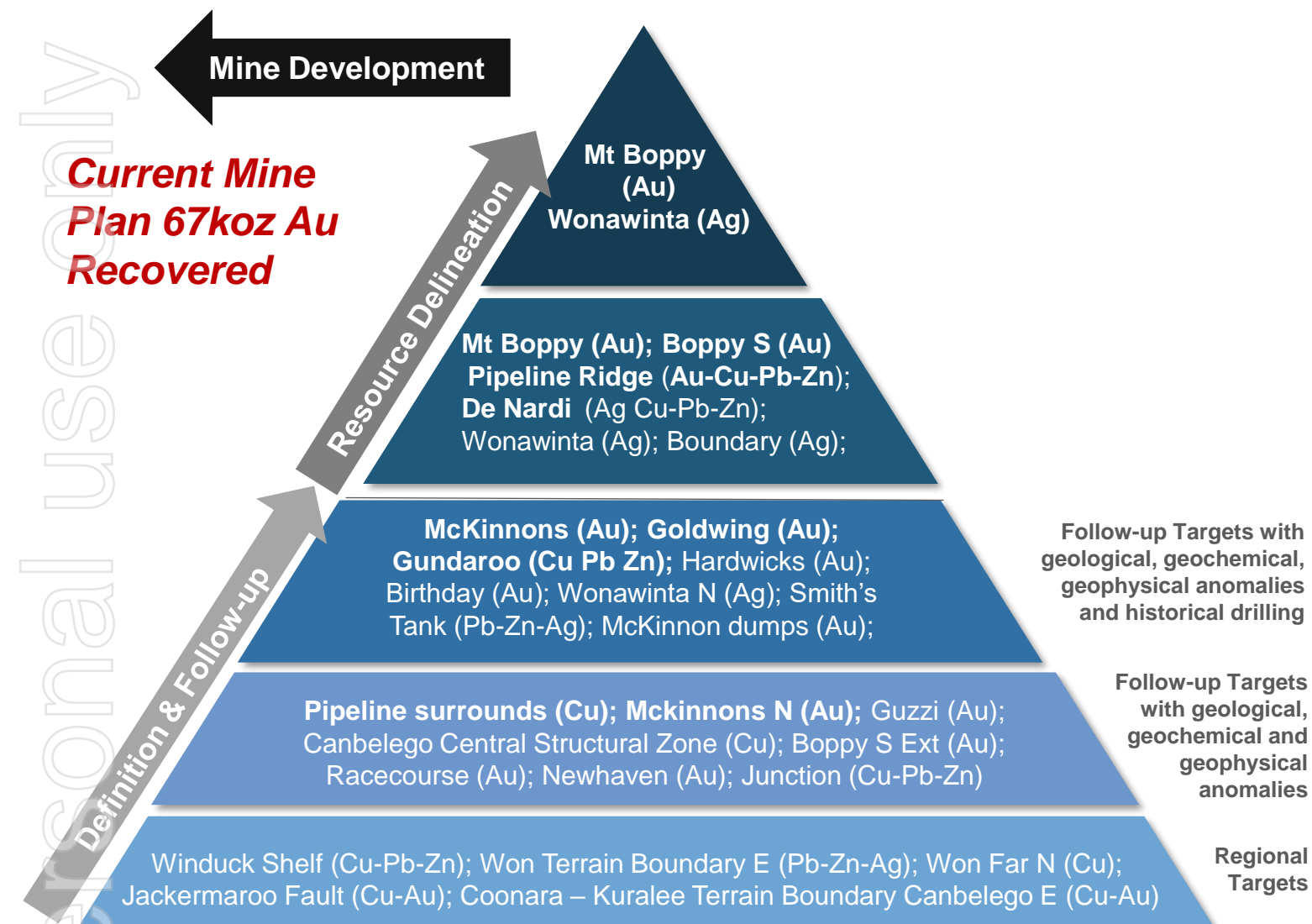
Byron holds a Bachelor of Commerce from the University of the Witwatersrand and further studies through the University of South Africa and Deakin University.

Growth Opportunities



Cobar Basin Exploration Pipeline

Mt Boppy Gold production to underpin organic growth via progression of the project pipeline



Current Regional Exploration Target¹

- 3-4Mt at 2.5-3.8 g/t Au for 249-527koz
- 17-22Mt at 40-50 g/t Ag for 22-36Moz
- significant polymetallic (Ag-Au-Cu-Zn-Pb) prospectivity

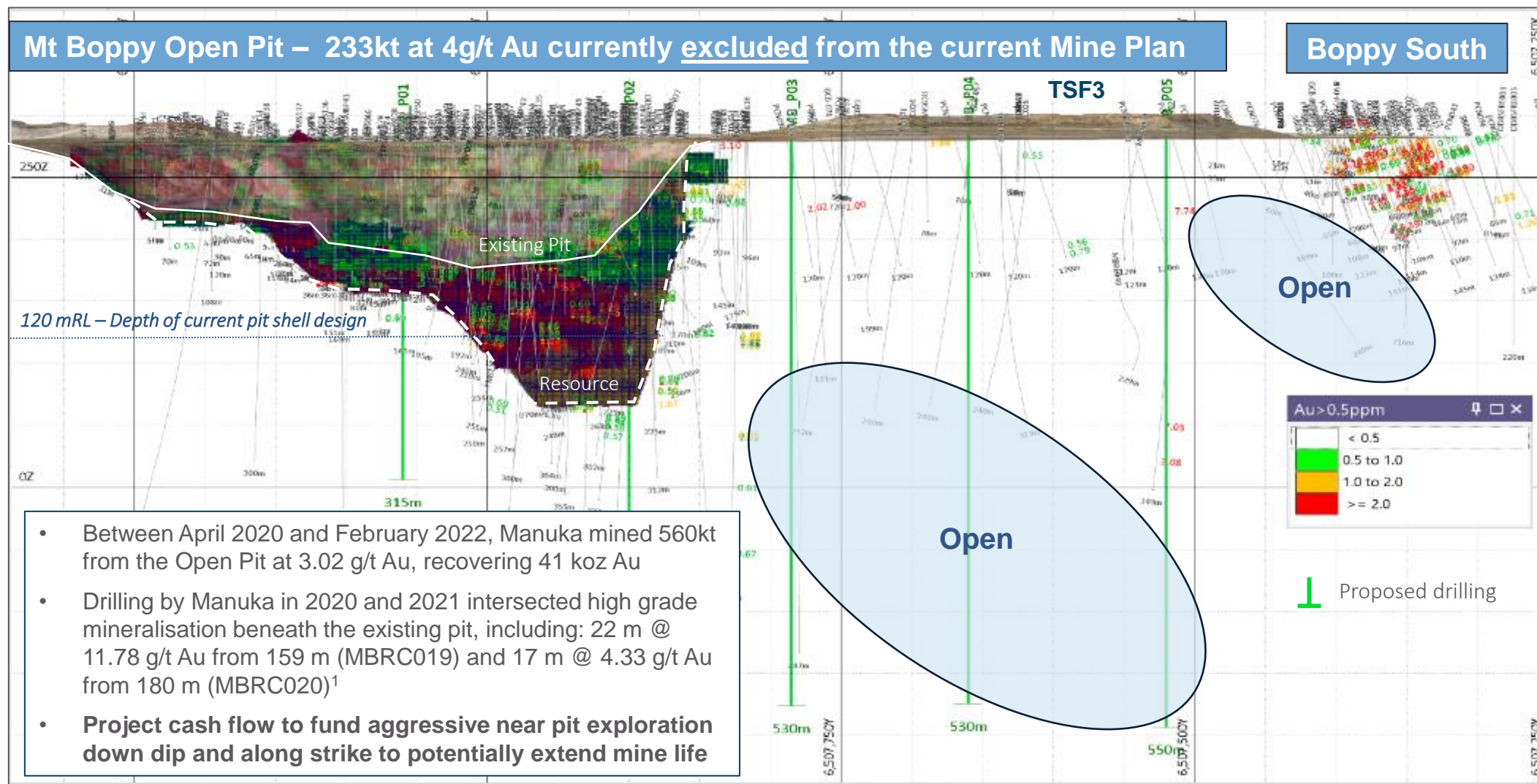
Priority Targets

- Pipeline Ridge
- Mt Boppy southern extension
- McKinnons intrusive gold exploration
- Wonawinta extensions North, South, and down dip
- Gundaroo – de Nardi Cu-Pb-Zn

¹ASX Release 14 February 2023

Unlocking Near-term Potential at Mt Boppy

Targeting Resource and Mine Expansion from the Existing Open Pit and Mining Leases



¹ASX Release 1 March 2021

Wonawinta Silver Mine (100% Manuka)

Previously Australia's Largest Primary Silver Mine



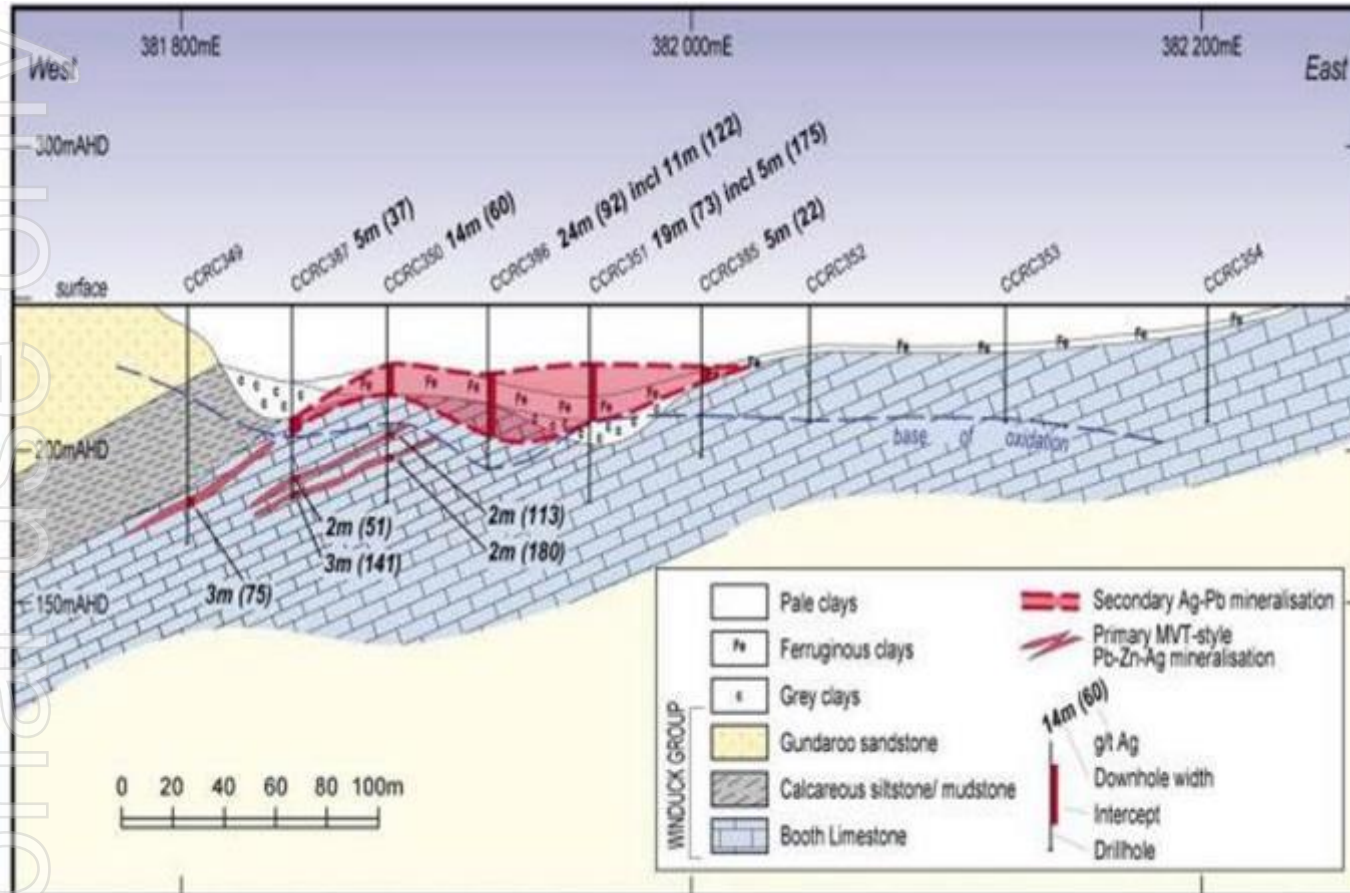
- **Wonawinta silver production of ~3Moz from 2012 to 2013, and ~ 500koz in 2022.**
- Total Resources¹ of 38.3Mt at 41g/t Ag for 51Moz Ag, including higher-grade component of 14Moz Ag at 97g/t Ag.
- Nameplate capacity ~ 0.85Mtpa utilised by Manuka to process Mt Boppy gold ore as recently as November 2023.
- Fully permitted with plant and all infrastructure operational.
- The Project remains on C&M and poised for restart.
- **Ore Reserve update targeted in October 2024.**
- Manuka is reviewing the potential restart of operations to be funded from cash flow generated by Mt Boppy operations.

Resource	Ore	Silver		Lead	
Classification	(Mt)	(g/t)	(Moz)	(%)	(kt)
Measured	1.1	47.3	1.65	0.69	7.5
Indicated	12.3	45.5	18.04	0.83	102.8
Inferred	24.9	39	31.25	0.39	96.9
Total	38.3	41.3	50.94	0.54	207.2

¹ASX Release 1 April 2021

Wonawinta Resource Extensions

High Potential for Economic Base Metals Mineralisation Down Dip of the Current Wonawinta Open Pit



Typical cross section through mineralisation at Wonawinta showing Booth Limestone and MVT style mineralisation beneath and down dip of Wonawinta silver open oxide pits

- 'Proof-of-Concept' drill program has successfully tested for presence of carbonate-hosted sulphides down-dip from existing Wonawinta open pits, encountering lead-zinc-silver mineralisation over 3km strike.
- **Selected mineralised intervals include¹:**
 - **DBM003:** 20 m @ 1.98% Pb+Zn, 43 g/t Ag from 94 m downhole including 4 m @ 6.34% Pb+Zn, 63g/t Ag from 101 m downhole.
 - **DBM004:** 11.4 m @ 1.23% Pb+Zn, 83.5g/t Ag from 130m downhole.
 - **DBL003:** 5.0 m @ 2.52% Pb+Zn, 128g/t Ag from 63m downhole.

¹ASX Release 1 June 2021

Thank you

- ✓ **Near-term production from Gold and Silver assets** located in the prolific Cobar Basin, NSW
- ✓ **Initial 3.5-Year mine plan delivering an average annualised EBITDA of A\$44M**
- ✓ **Large Vanadium-rich Iron Sands Resource** located offshore of the Taranaki Bight, New Zealand
- ✓ **Phased Strategy to deliver Self-Sustaining Value Creation**
- ✓ **The Company's current focus is bringing Mt Boppy Gold Mine back into production in CQ1-2025**

1. Financial Forecasts and the Production Target should be read in conjunction with the cautionary statement on Page 12 and the Material Assumptions Presentation in Appendix 1.



Corporate Office:
Suite 405 Grafton Bond Building
201 Kent Street
Sydney, NSW 2000 Australia
Phone: 02 7253 2020
Email: admin@manukaresources.com.au

Appendix 1: Material Assumptions



Mt Boppy Gold Mine – Mineral Resource Estimate¹

Recent Sonic Drilling over Rock Dumps and TSF3 has Improved Confidence in Resource Grade Distribution

Location	Classification	Tonnes (kt)	Au (g/t)	Au (koz)
Mt Boppy Open Pit	Measured	107	5.25	18.0
	Indicated	158	4.86	24.7
	M & I	265	5.01	42.7
	Inferred	17	3.90	2.1
Boppy South	Inferred	110	2.39	8.5
Rock Dumps	Indicated	2,116	0.80	54.3
	Inferred	881	0.61	17.2
Tailings	Indicated	853	1.37	37.5
	Inferred	38	1.30	1.6
Total Resource	Measured	107	5.25	18.0
	Indicated	3,127	1.16	116.5
	Total M & I	3,233	1.29	134.5
	Inferred	1,046	0.87	29.4
	Total Resource	4,279	1.19	163.9



View of the Mt Boppy mine site looking south

¹ASX Release 16 April 2024

Mt Boppy Gold Mine – Rock Dump Mining

Opportunity to Monetise Free-digging Rock Dumps Previously Processed Through the Wonawinta Plant

ROCK DUMP TAILINGS



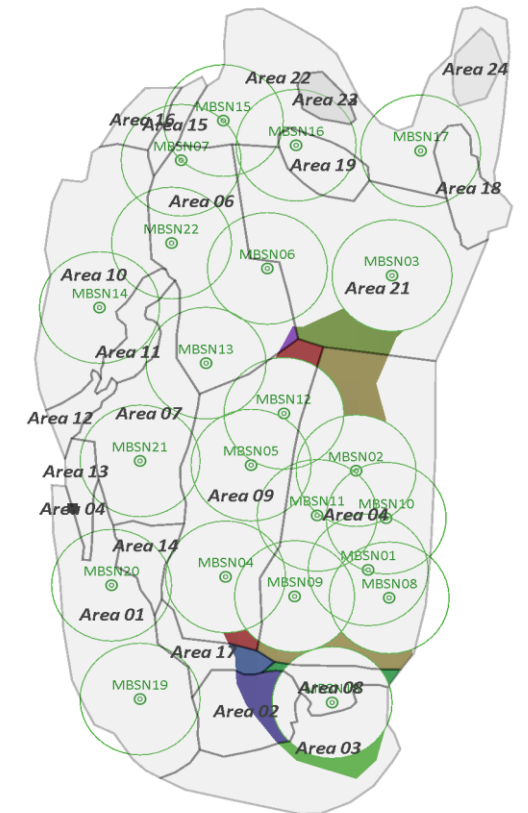
ROCK DUMP OXIDE



ROCK DUMP FRESH



RESOURCE DEFINITION



Sonic Drilling performed in CYQ4-2023 provided greater certainty in the ore type and grade throughout the main Rock Dump. Additional Sonic Drilling planned for CYQ4-2024 to further define grade control over initial two years of the mining schedule

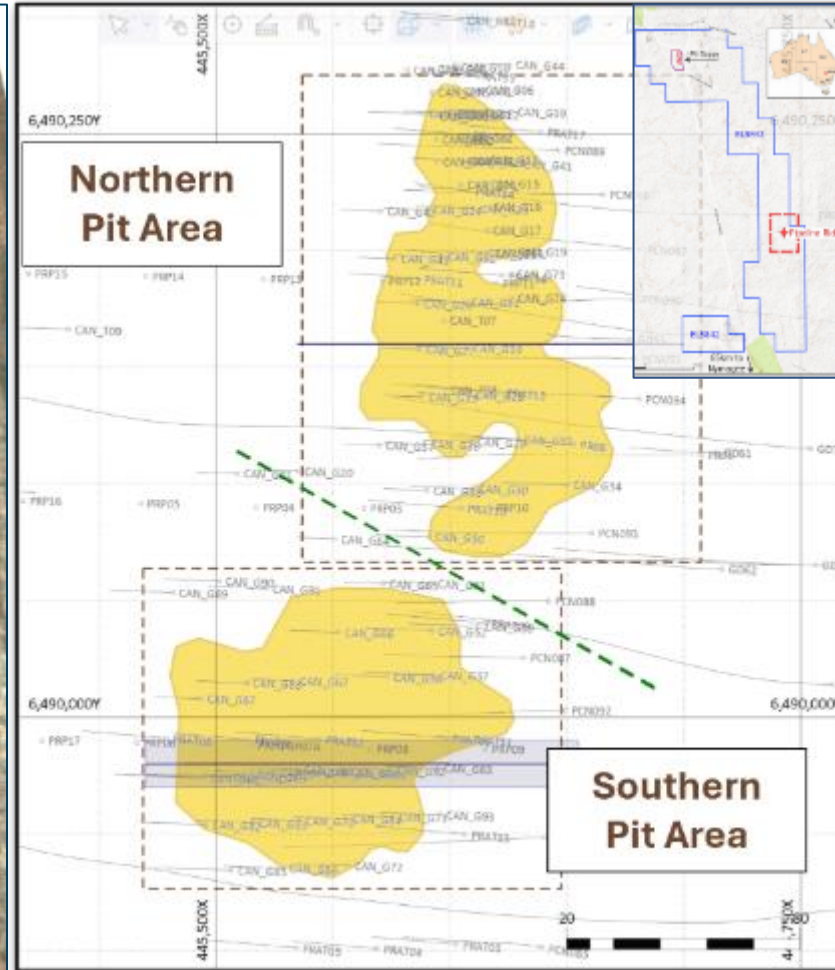
Increased data density underpinned an MRE update in April 2024.

Mt Boppy Gold Mine – TSF3 and Pipeline Ridge Mining

Rock Dump Oxide, Fresh and Tailings Mining followed by TSF3 and the Pipeline Oxide Open Pit



Mt Boppy TSF3 by Ore Type

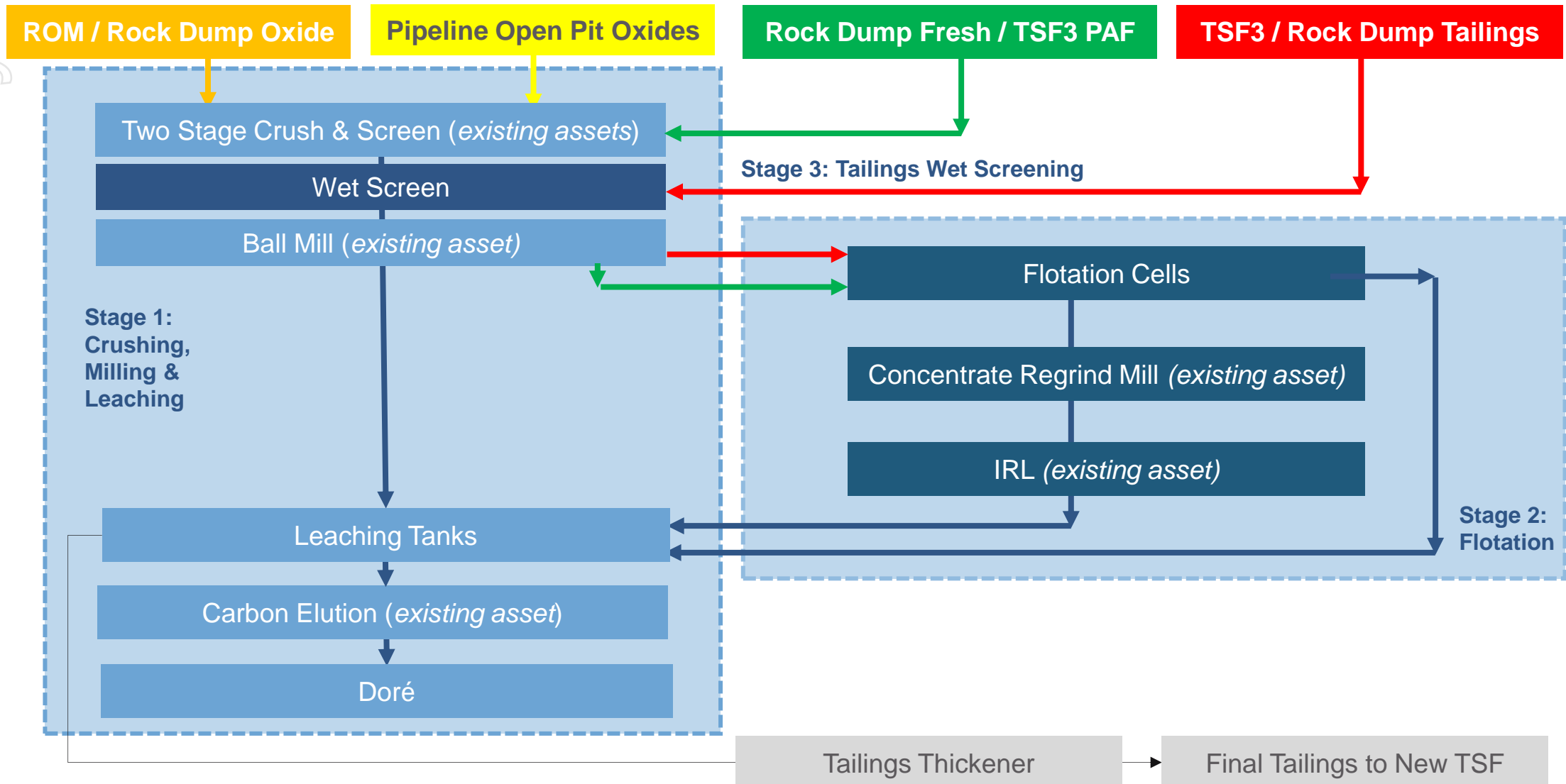


Pipeline Ridge (Plan View)

- Sonic Drilling performed in CYQ4-2023 provided greater certainty in the ore type and grade throughout TSF3.
- TSF3 ore is comprised of two layers of Tailings deposition from previous cyanidation operations and is partially covering by potential acid forming waste rock (TSF3 PAF).
- Pipeline Ridge is located 28km south of Mt Boppy and comprises 12,600m of drilling to date.
- Estimated ~A\$500k to convert 350kt at 2.1 g/t Au oxide into an open-pitatable Indicated Resource at Pipeline Ridge.

Mt Boppy Gold Mine – Optimised Process Flowsheet

Optimised & Simplified 100tph Flowsheet – Stage 1 Oxide Leaching, Stage 2/3 Fresh Flotation, Wet Screen



Additional Material Assumptions

Item	Comment
Gold Price	US\$2,650/oz (AUD\$3785/oz)
Exchange Rate	A\$:US\$ = 0.70
Royalties	4% less allowable deductions
Gold Payability	99.96%
Doré Transport	4 trips/mth at A\$4,000 per trip
Reclamation	Rock Dump / TSF3 PAF Ore: A\$8.29/t – Contract Mining / Crush / Screen Tailings Ore: A\$4.18/t – Contract Mining Rock Dump Waste: A\$4.34/t – Contract Mining
Open Pit Mining	Oxide Ore A\$10.05/t – Contract Mining / Free Dig and Haulage to Mt Boppy Waste: A\$4.75/t – Contract Mining / Free Dig
Gold Recoveries	Oxide Ore 85%; Fresh Ore 80%; Tailings Ore 80%; Pipeline Ridge: 80%
Processing Plant Opex	Oxide Ore: A\$369k/mth + A\$14.17/t Fresh Ore: A\$436k/mth + A\$20.96/t Tailings Ore: A\$341k/mth + A\$20.89/t
G & A	Site Management, Admin, Accommodation Camp: A\$320k/mth
Cost Basis	All costs have been calculated on a first principles basis based on vendor and contractor quotes and Company estimates derived from previous mining/screening operations at Mt Boppy and ore processing at Wonawinta
Workforce	50 Salaried Staff including 9 Management Roles, 5 Camp Personnel, 5 Site Laboratory Personnel, 2 Geologists, 20 Processing Personnel and 9 Maintenance Personnel.
Process Throughput	Milling/Processing Plant (75tph), 91% Availability (Day / Night Shifts).
Pipeline Ridge	Pipeline Ridge is located on an Exploration Licence. Before mining can commence at Pipeline Ridge, Manuka requires a granted Mining Licence and Environmental and Statutory approvals to commence mining.

