

7th February 2024

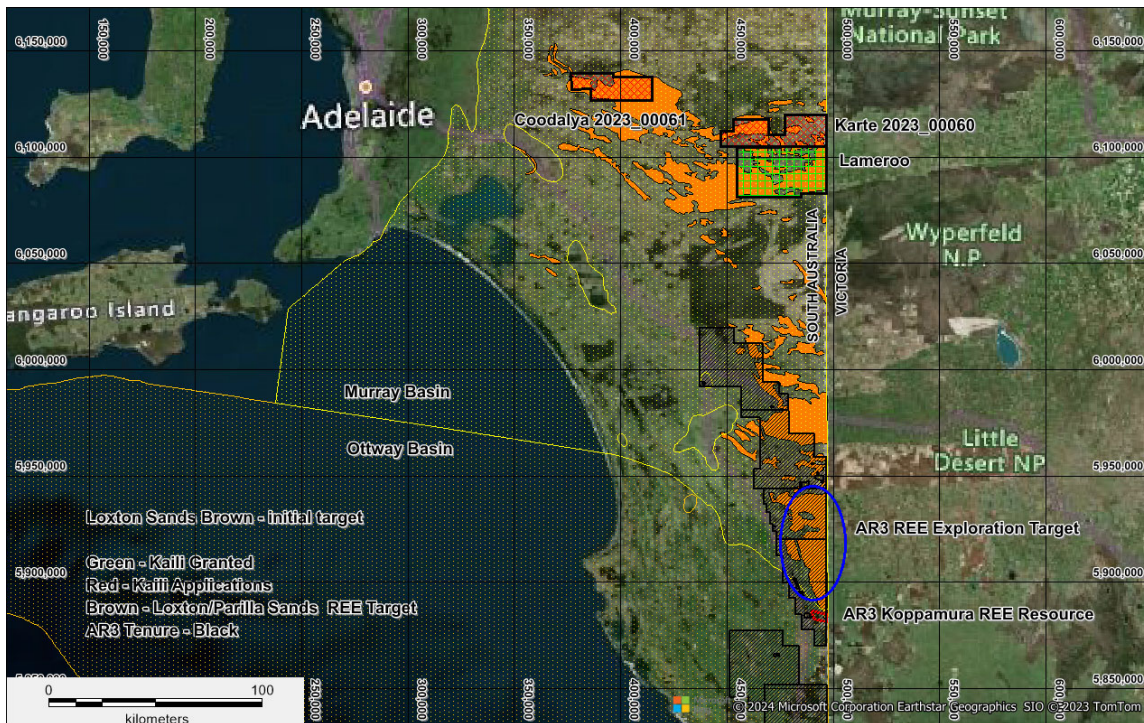
ASX Market Announcements

**AIRCORE DRILLING FINALISED FOR RARE EARTH ELEMENTS EXPLORATION
 AT LAMEROO EL 6856, LIMESTONE COAST, SOUTH AUSTRALIA**

The Company has finalised the site aircore drilling exploring for Rare Earth Elements (“REEs”) at Lameroo EL 6856 for a total of 40 holes for 800 metres (**Figure 1**). Each hole was drilled to 20m.

The drilling sites were selected based on studies carried out to date by the Company and the information obtained from pXRF scans and laboratory assays for REEs of a selection of core and drill chips from historic drilling that were available at the SA Mines Department.

In this initial program, the holes, which were widely spaced across the target Loxton/Parilla Sands stratigraphy (**Figure 2**) along roadside verges (**Figure 3**) with local council approval, minimise disruptions on private land and aim to identify areas of potential.



**Figure 1: Location of Granted Lameroo and Under Application Karte and Coodalya Rare Earth
 Exploration Tenements in Murray Basin South Australia**

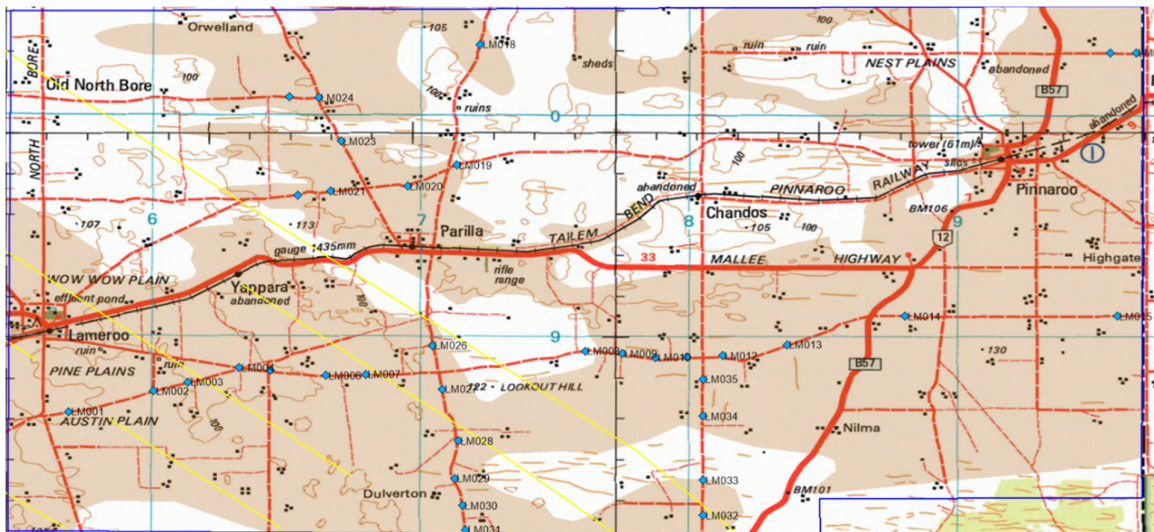


Figure 2: Location of Lameroo Aircore Drill Holes (LM series) within the target Loxton/Parilla Sands (brown)

The site geologist will scan every meter drilled with the Vanta M Series pXRF and, based on the lithologies intersected and the REE results (La + Ce + Y + Nd + Pr) samples selected at 1 m intervals will be freighted to ALS laboratory in Adelaide for assay of the full suite of REE elements. When the results are received an announcement will be released to ASX.

Competent Person Statement

The information in the report above that relates to Exploration Results, Exploration Targets and Mineral Resources is based on information compiled by Mr Mark Derriman, who is the Company’s Consultant Geologist and a member of The Australian Institute of Geoscientists (1566). Mr Mark Derriman has sufficient experience that is relevant to the style of mineralization and type of deposit under consideration and to the activities which he is undertaking to qualify as a Competent Person as defined in the 2012 Edition of the Australasian Code for Reporting of Exploration Results, Exploration Targets, Mineral Resources and Ore Reserves. Mr Mark Derriman consents to the inclusion in this report of matters based on his information in the form and context in which it appears.

Forward-Looking Statement

This document may include forward-looking statements. Forward-looking statements include, but are not limited to, statements concerning planned exploration program and other statements that are not historical facts. When used in this document, the words such as “could”, “plan”, “estimate”, “expect”, “intend”, “may”, “potential”, “should” and similar expressions are forward-looking statements. Although Kaili Resources Limited believes that its expectations reflected in these forward-looking statements are reasonable, such statements involve risks and uncertainties and no assurance can be given that actual results will be consistent with these forward-looking statements.

Authorised by.

Long Zhao
 Director/Company Secretary
 Contact

T: +61 2 9264 6288 E : contact@kailigroup.com.au

For personal use only