

5th February 2024

ASX Market Announcements

**AIRCORE DRILLING COMMENCED FOR RARE EARTH ELEMENTS EXPLORATION
 AT LAMEROO EL 6856, LIMESTONE COAST, SOUTH AUSTRALIA**

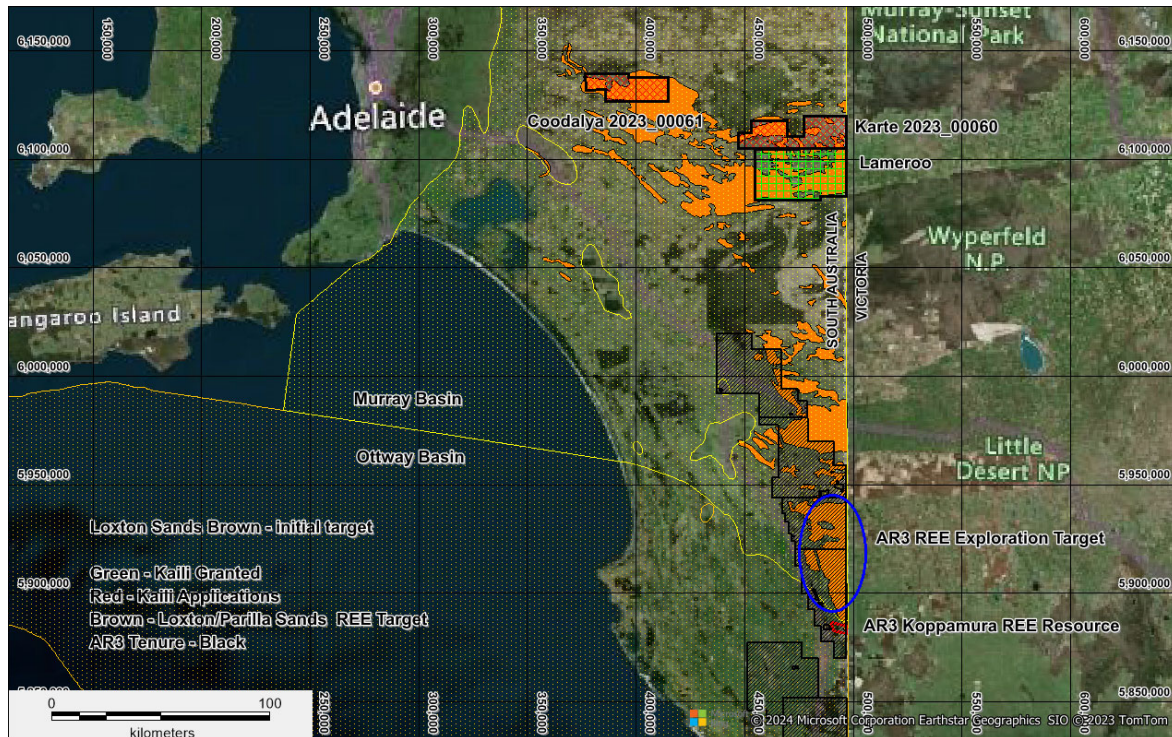


Figure 1: Location of Granted Lameroo and Under Application Karte and Coodalya Rare Earth Exploration Tenements in Murray Basin South Australia

Last Saturday the Company commenced the aircore drilling program exploring for Rare Earth Elements (“REEs”) at Lameroo EL 6856 for a total of 800 metres (**Figure 1**). Each hole is planned to be drilled up to 20 m in depth depending on decision of the site geologist. The drilling may be completed by the end of this week subject to weather and unforeseen events.

The drilling sites have been selected based on studies carried out to date by the Company and the information obtained from pXRF scans and laboratory assays for REEs of a selection of core and drill chips from historic drilling that were available at the SA Mines Department.

In this initial program, the holes that have been widely spaced across the target Loxton/Parilla Sands stratigraphy (**Figure 2**) along roadside verges with local council approvals minimises disruptions on private land and aims to identify areas of potential. Based on results, infill and extensional drilling may be the next exploration phase.

At the end of the program, the site geologist will scan every meter drilled with the Vanta M Series pXRF and, based on the lithologies intersected and the REE results (La + Ce + Y + Nd + Pr) samples selected at 1 m intervals will be freighted to ALS laboratory in Adelaide for assay of the full suite of REE elements.

For personal use only

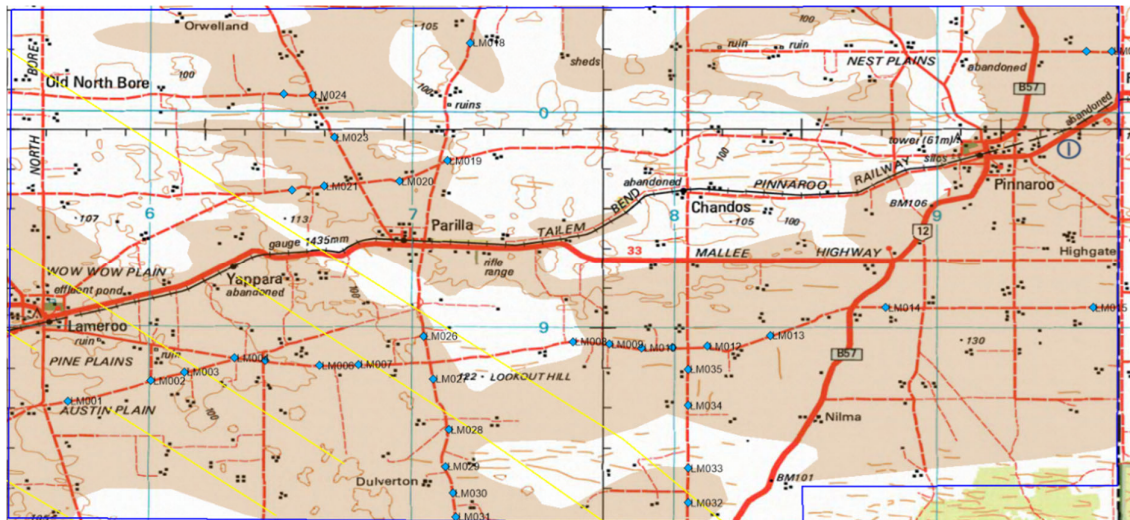


Figure 2: Location of Lameroo Aircore Drill Holes (LM series) within the target Loxton/Parill Sands (brown)

Competent Person Statement

The information in the report above that relates to Exploration Results, Exploration Targets and Mineral Resources is based on information compiled by Mr Mark Derriman, who is the Company’s Consultant Geologist and a member of The Australian Institute of Geoscientists (1566). Mr Mark Derriman has sufficient experience that is relevant to the style of mineralization and type of deposit under consideration and to the activities which he is undertaking to qualify as a Competent Person as defined in the 2012 Edition of the Australasian Code for Reporting of Exploration Results, Exploration Targets, Mineral Resources and Ore Reserves. Mr Mark Derriman consents to the inclusion in this report of matters based on his information in the form and context in which it appears.

Forward-Looking Statement

This document may include forward-looking statements. Forward-looking statements include, but are not limited to, statements concerning planned exploration program and other statements that are not historical facts. When used in this document, the words such as “could”, “plan”, “estimate”, “expect”, “intend”, “may”, “potential”, “should” and similar expressions are forward-looking statements. Although Kaili Resources Limited believes that its expectations reflected in these forward-looking statements are reasonable, such statements involve risks and uncertainties and no assurance can be given that actual results will be consistent with these forward-looking statements.

Authorised by.

Long Zhao
 Director/Company Secretary

Contact

T: +61 2 9264 6288 E : contact@kailigroup.com.au

For personal use only