

INVESTOR WEBINAR PRESENTATION

- ✕ **Heavy Minerals Limited takes another opportunity to update investors and industry on its flagship Port Gregory Project**
- ✕ **Momentum builds with the commencement of the Pre-Feasibility Study and Project Permitting**

Heavy Minerals Limited (ACN 647 831 833) ("**Heavy Minerals**" or the "**Company**") is pleased to announce to announce its participation in the ShareCafe Small Cap "Hidden Gems" Webinar, to be held Friday 27 October 2023 from 12:30pm AEDT/ 9:30am AWST.

Andrew Taplin - Chief Executive Officer will provide an overview of the Company which is an Australian based Industrial Minerals Company.

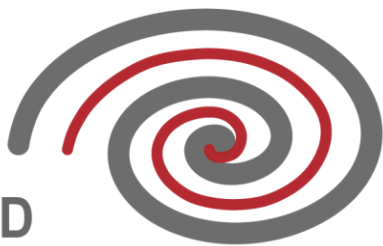
This webinar can be viewed live via Zoom and will provide viewers the opportunity to hear from, and engage with, a range of ASX-listed leading micro/mid cap companies.

To access further details of the event and to register at no cost, please copy and paste the following link into your internet browser:

https://us02web.zoom.us/webinar/register/WN_Qc_8F4MYQhu-zw8PIW2YPw#/registration

A recorded copy of the webinar will be made available following the event.





About Heavy Minerals Limited

Heavy Minerals Limited (ASX: HVY) is an Australian listed industrial mineral exploration company.

The Company's projects are prospective for industrial minerals including but not limited to Garnet, Zircon, Rutile and Ilmenite. The Company's initial focus is the Port Gregory and Red Hill Garnet Projects in Western Australia with the Port Gregory project having a JORC (2012) Mineral Resource of 166 million tonnes @ 4.0% Total Heavy Minerals. This comprises a Measured Mineral Resource of 126 Mt @ 3.8% THM; an Indicated Mineral Resource of 20 Mt @ 6.5% THM; and an Inferred Mineral Resource of 20 Mt @ 2.9% THM. This includes 5.9 million tonnes of contained Garnet and 260 thousand tonnes of ilmenite¹.

An Exploration Target has been defined for Red Hill using cut-off grades for reporting of 3% THM and 1% THM and ranging from 90 to 150 Mt of material @ 5.4% to 4.1% THM. The Exploration Target also contains between 5 and 6 Mt of THM and 3.8 and 4.5 Mt of garnet². The potential quality and grade of the Exploration Target is conceptual in nature and there has been insufficient exploration activity to determine a Mineral Resource estimate and it is uncertain if further exploration will result in the estimation of a Mineral Resource.

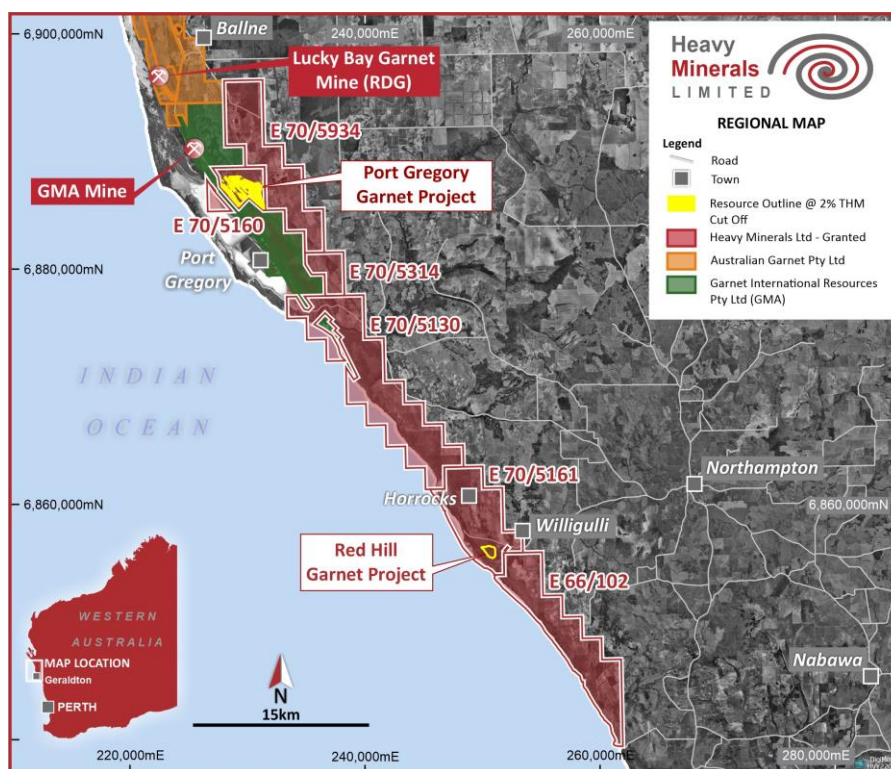
The Company's other project is the Inhambane Heavy Mineral Project in Mozambique which contains an ilmenite dominated JORC (2012) Inferred Mineral Resource of 90 million tonnes @ 3.0% Total Heavy Mineral³.

To learn more please visit: www.heavyminerals.com

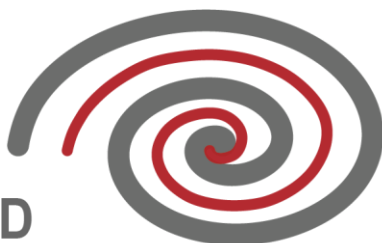
¹ https://cdn-api.markitdigital.com/apiman-gateway/ASX/asx-research/1.0/file/2924-02685080-6A1157738?access_token=83ff96335c2d45a094df02a206a39ff4

² https://cdn-api.markitdigital.com/apiman-gateway/ASX/asx-research/1.0/file/2924-02661758-6A1148442?access_token=83ff96335c2d45a094df02a206a39ff4

³ https://cdn-api.markitdigital.com/apiman-gateway/ASX/asx-research/1.0/file/2924-02462745-6A1067130?access_token=83ff96335c2d45a094df02a206a39ff4



Project Locations - Port Gregory and Red Hill



This announcement has been authorised by the Board of Directors of the Company.

Ends

For further information, please contact:

Heavy Minerals Limited

Adam Schofield
Non-Executive Chairman
Ph: +61 (08) 9481 0389
E: info@heavyminerals.com

Andrew Taplin
Chief Executive Officer
Ph: +61 (08) 9481 0389
E: andrew@heavyminerals.com

Media & Investor Enquiries

Peter Taylor, NWR Communications Ph: +61 (0) 412 036 231
E: Peter@nwrcommunications.com.au

Competent Person Statement

The information in this announcement that relates to Exploration Targets and Mineral Resource estimates is based on and fairly represents information and supporting documentation prepared, compiled and reviewed by Mr. Greg Jones (FAusIMM) who is an Independent Non-Executive Director of the Company. Mr. Jones is a Fellow of the Australasian Institute of Mining and Metallurgy and has sufficient experience that is relevant to the style of mineralisation and type of deposits under consideration and to the activity that is being reported on to qualify as a Competent Person as defined in the 2012 Edition of the "Australasian Code for Reporting of Exploration Results, Mineral Resources and Ore Reserves". Mr. Jones has reviewed this report and consents to the inclusion in the report of the matters in the form and context with which it appears.

The Company confirms that it is not aware of any new information or data that materially affects the information included in the Heavy Minerals Limited Corporate Presentation.