



Growing a significant lithium presence in
James Bay, Canada

ASX:REC

Spotlight 2023 Investor Conference, Perth, 25 October 2023

ersonal use only

Disclaimer



Nature of document: This presentation has been prepared and issued by Recharge Metals Limited (**Recharge or the Company**) to provide general information about the Company. The information in this presentation is presented in summary form and should not be relied upon as a complete and accurate representation of any matters that a reader should consider in evaluating the Company. While management has taken every effort to ensure the accuracy of the material in this presentation, the Company and its advisers have not verified the accuracy or completeness of the material contained in this presentation.

Forward looking statements: This presentation contains forward looking information about the Company and its operations. In certain cases, forward looking information may be identified by such terms as "anticipates", "believes", "should", "could", "estimates", "target", "likely", "plan", "expects", "may", "intend", "shall", "will", or "would". These statements are based on information currently available to the Company and the Company provides no assurance that actual results will meet management's expectations. Forward looking statements are subject to risk factors associated with the Company's business, many of which are beyond the control of the Company. It is believed that the expectations reflected in these statements are reasonable but they may be affected by a variety of variables and changes in underlying assumptions which could cause actual results or trends to differ materially from those expressed or implied in such statements. There can be no assurance that actual outcomes will not differ materially from these statements.

Disclaimer: No representation or warranty, express or implied, is made by the Company that the material contained in this presentation will be achieved or proved correct. Except for statutory liability which cannot be excluded, each of the Company, its directors, officers, employees, advisors and agents expressly disclaims any responsibility for the accuracy, fairness, sufficiency or completeness of the material contained in this presentation and excludes all liability whatsoever (including in negligence) for any loss or damage which may be suffered by any person as a consequence of any information in this presentation or any effort or omission therefrom. The Company will not update or keep current the information contained in this presentation or to correct any inaccuracy or omission which may become apparent, or to furnish any person with any further information. Any opinions expressed in the presentation are subject to change without notice.

Not financial product advice: Neither the Company nor any of its related bodies corporate is licensed to provide financial product advice in respect of the Company's securities or any other financial products. You should not act and refrain from acting in reliance on this presentation. Nothing contained in this presentation constitutes investment, legal, tax or other advice. This presentation does not take into account the individual investment objectives, financial situation and particular needs of Company shareholders. Before making a decision to invest in the Company at any time, you should conduct, with the assistance of your broker or other financial or professional adviser, your own

investigation in light of your particular investment needs, objectives and financial circumstances and perform your own analysis of the Company before making any investment decision.

Not an offer: This presentation and its contents are not an invitation, offer, solicitation or recommendation with respect to the purchase or sale of any securities in the Company in any jurisdiction and must not be distributed, transmitted, or viewed by any person in any jurisdiction where the distribution, transmission or viewing of this document would be unlawful under the securities or other laws of that or any other jurisdiction. This presentation is not a prospectus or any other offering document under Australian law (and will not be lodged with the Australian Securities and Investments Commission) or any other law.

Cautionary Note: Mineralisation hosted on adjacent and/or nearby and/or geologically similar properties is not necessarily indicative of mineralisation hosted on the Company's properties. In addition, the presence of pegmatite, pegmatite granite or visual spodumene on the Company's property or on adjacent properties does not equate to lithium mineralisation. The Company is encouraged by the geology identified in the area, but no quantitative or qualitative assessment of mineralisation is possible at this stage. The Company plans to undertake field work to test for potential lithium mineralisation and laboratory analysis of rock chip samples is required to determine whether this is present.

Competent Persons Statement: The information in this presentation that relates to Exploration Results is based on information compiled or reviewed by Ms Felicity Repacholi, a Competent Person who is an employee of the company. Ms Repacholi is a Member of the Australian Institute of Geoscientists and has sufficient experience of relevance to the styles of mineralisation and the types of deposits under consideration, and to the activities undertaken, to qualify as a Competent Person as defined in the 2012 Edition of the Joint Ore Reserves Committee (JORC) Australasian Code for Reporting of Exploration Results, Mineral Resources and Ore Reserves. Ms Repacholi consents to the inclusion in this report of the matters based on information in the form and context in which it appears.

The Company confirms that it is not aware of any new information or data that materially affects the Exploration Results information included in this presentation from the previous Company announcement announced to the ASX on 15 March 2023, 18 May 2023, 14 June 2023, 20 July 2023, 28 August 2023, 4 October 2023 and 18 October 2023.

Authorisation: This presentation is authorised for market release by Recharge's Managing Director, Ms Felicity Repacholi.

All currency amounts are in Australian dollars unless specified otherwise.

Investment Summary



Large strategic land holding in the heart of the prolific **James Bay Region, Québec, Canada** which is emerging as a **world-class lithium province**



Numerous **untested outcropping pegmatites** adjacent to known lithium mineralisation

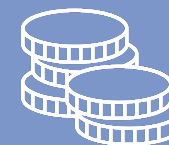


DG Resource Management vended Recharge's Express project, and hold ~16% of the register

Dahrouge Consulting engaged as in-country consultant for technical and geological expertise and exploration oversight



Maiden aggressive **field exploration** campaign underway, over 200km of traverses & airborne surveys completed



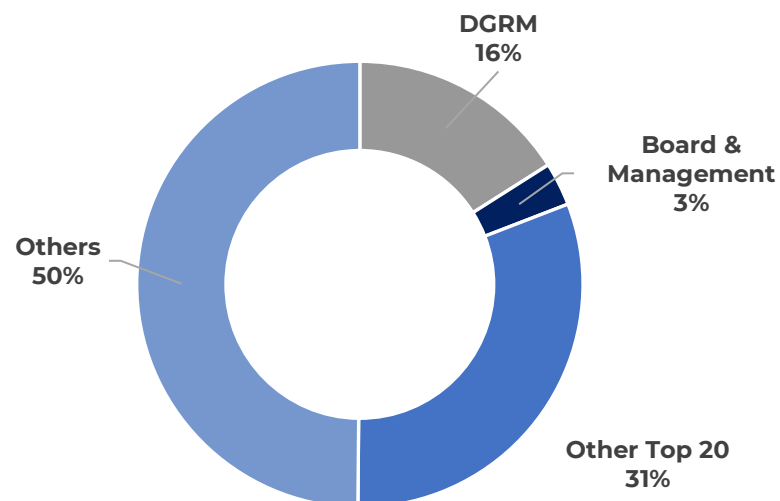
Fully funded to undertake concurrent exploration programs at Express and Wapistan

Corporate Snapshot



Capital Structure (as at 18/10/2023)

ASX Code	REC
Ordinary Shares on Issue	111,351,974
Unlisted Options and Performance Rights	46,799,500
Market Cap	~\$17M
Cash	\$2.60M ^(as at 30/06/2023)



Felicity Repacholi
Managing Director



Simon Andrew
Non-Executive Chairman

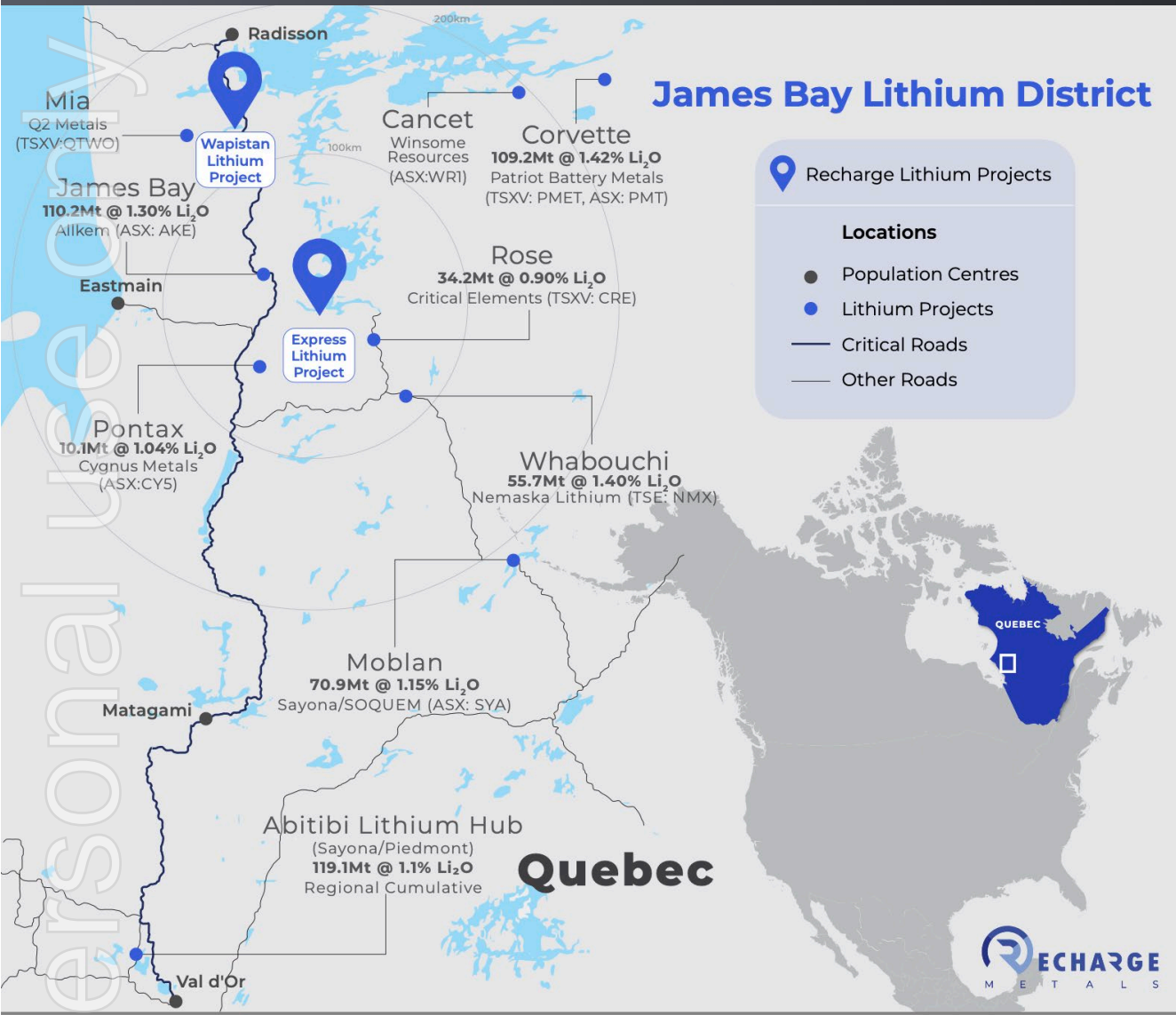


Amanda Burgess
Non-Executive Director
& Company Secretary



Dahrouge Geological Consulting Ltd
Geological Consultants

James Bay: Emerging, world-class lithium province



- Located in the heart of James Bay Region in Québec, Canada
- James Bay Region emerging as a world-class lithium-cesium-tantalum (LCT) pegmatite province
- Region has attracted the attention of Rio Tinto and other major players
- Large strategic ground holding - 181km²
- Projects overlie prospective geology of the Yasinski Greenstone Belt and the "Spodumene Suite" adjacent to Allkem's James Bay Deposit
- Outcropping pegmatites proximal to major deposits and recent discoveries
- Circa existing infrastructure; including the Billy Diamond Highway and low cost, green, hydroelectric power
- Aggressive field campaign commenced with Dahrouge Geological

Express Lithium Project: Highly prospective for lithium mineralisation



- 139 mineral claims over 2 contiguous claim blocks covering significant 74km² project area
- Main claim block underlain by “muscovite and tourmaline bearing pegmatite” with enclaves of pegmatite
- Smaller claim block underlain by Chambois Greenstone Belt
- High-priority pegmatites identified along trend from government mapping; termed the “Spodumene Suite” by Quebec’s MERN
- 145km of ground traverses completed during maiden field exploration program
- Systematic mapping and sampling
- Samples delivered to laboratory for analysis

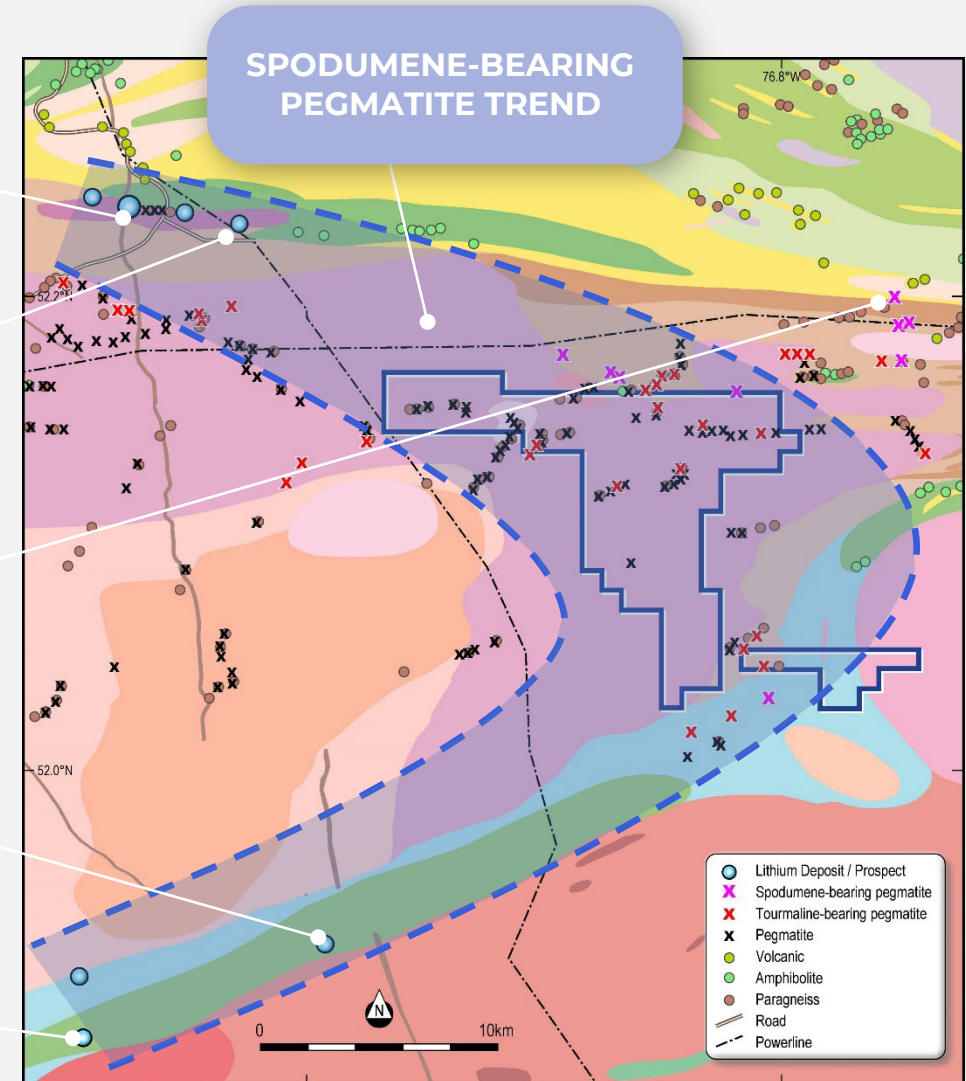
James Bay Lithium Deposit
110.2Mt @ 1.3% Li₂O
Allkem (ASX: AKE)

**Anatacau West Project
Brunswick Exploration**
(TSX-V: BRW)
12 drillholes completed, results
include 26.5m @ 1.51% Li₂O*

**Anatacau Main Project
Brunswick Exploration**
(TSX-V: BRW)
Analysing - 19 grab samples ranging
from 1.2% to 3.8% Li₂O*

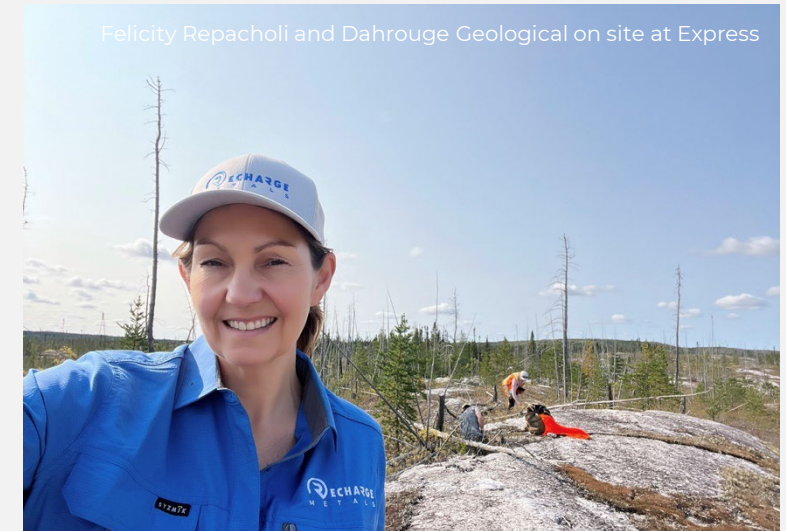
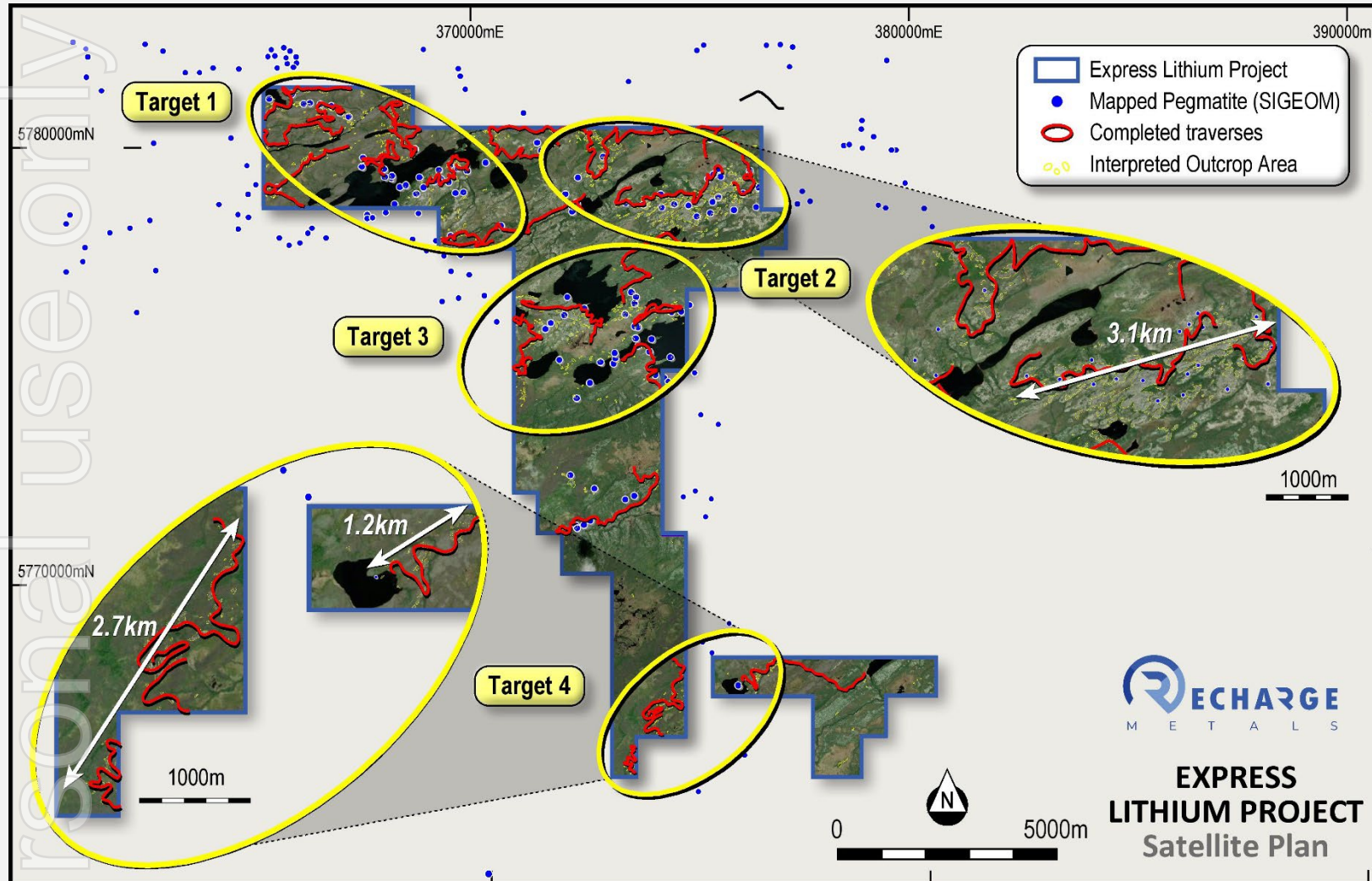
**Pontax Project
Cygnus Metals**
(ASX: CY5)

**Pontax Project
Patriot Battery Metals**
(TSX-V: PMET, ASX:PMT)



* Refer Slide 13 for Information Sources

Express Lithium Project: 145km of high priority target areas traversed

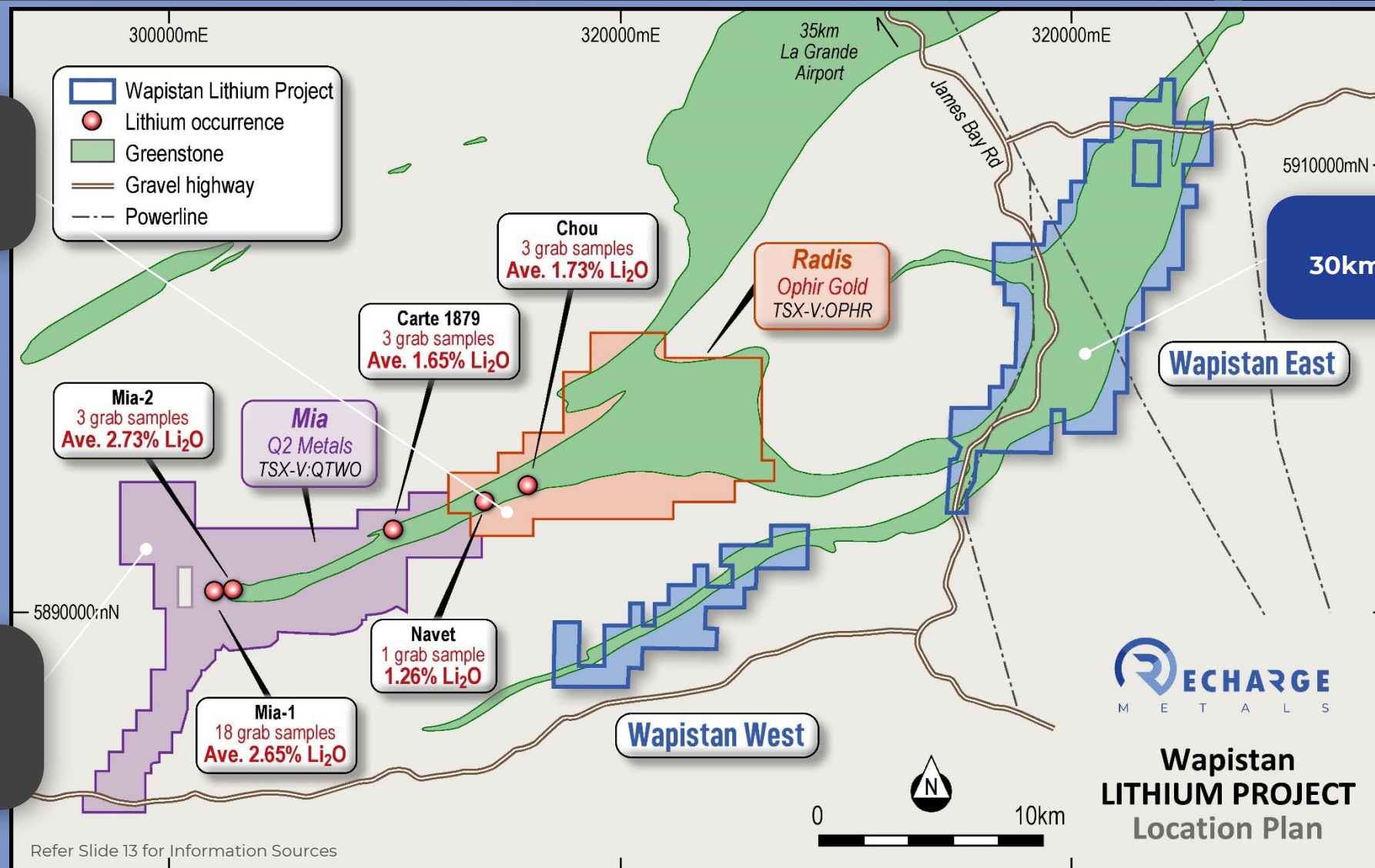


Wapistan Lithium Project

Exploration success highlights potential

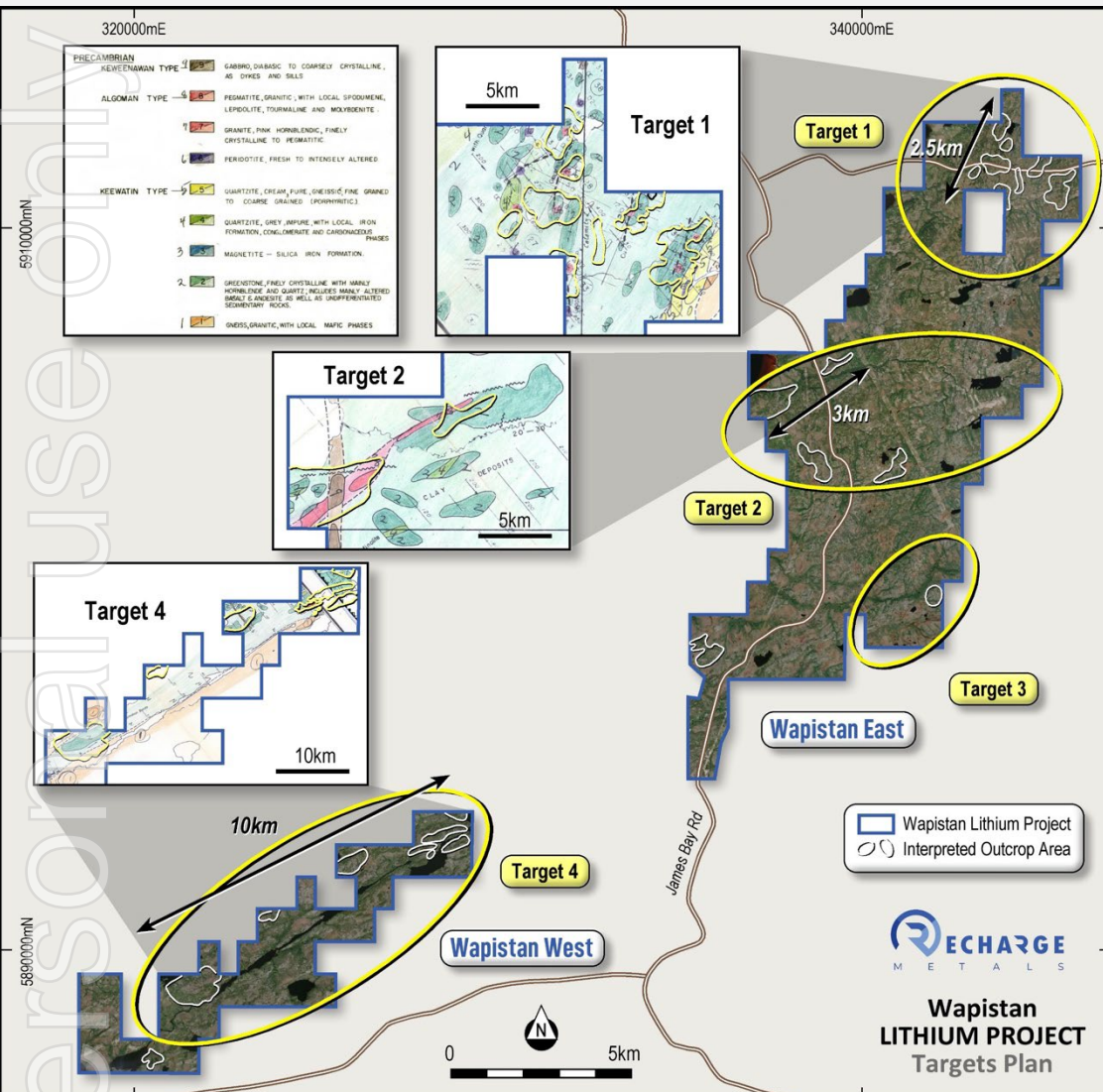
Radis Project
Ophir Gold
(TSX-V: OPHR)

Mia Project
Q2 Metals
(TSX-V: QTWO)
9.7 km trend
drilling imminent



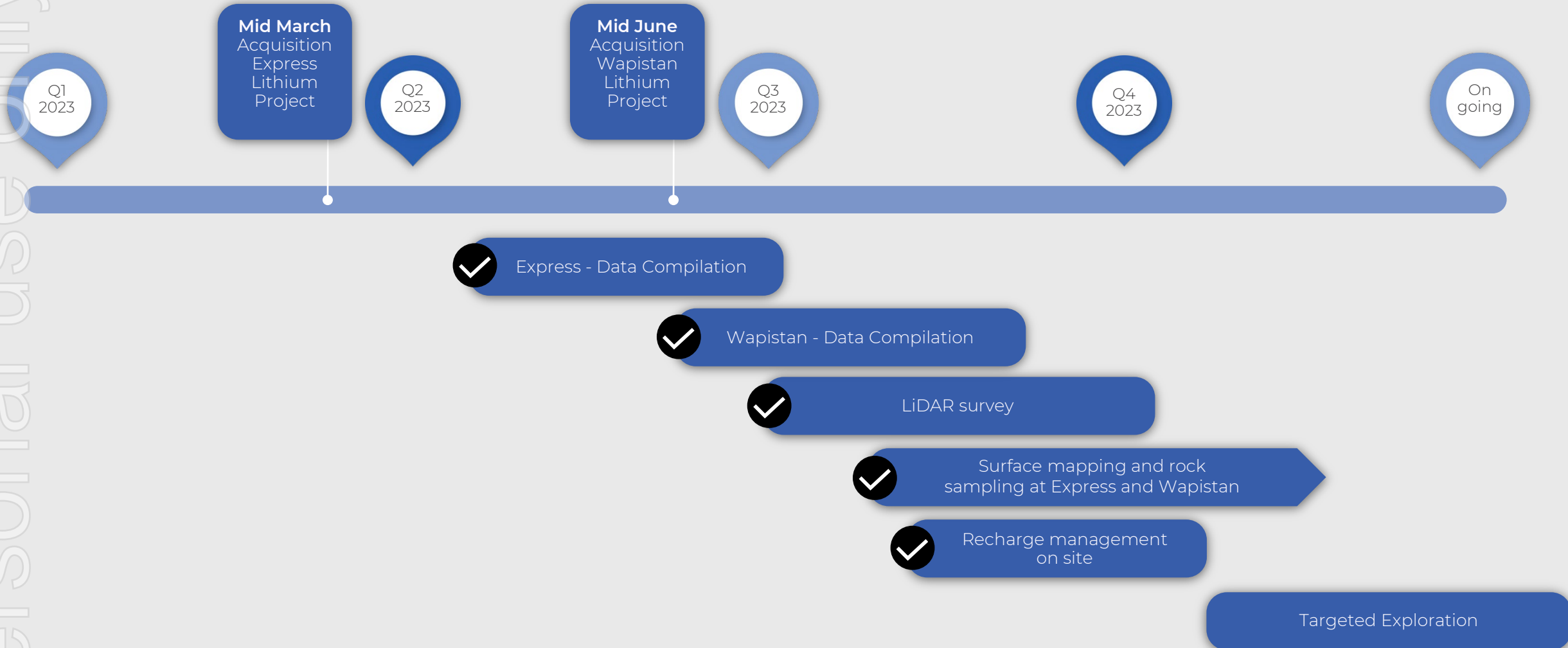
107km²
30km of greenstone belt

Wapistan Lithium Project: Dahrouge Geological on site



- Large-scale, 107km² project over two claim areas
- Located just 10km east of Q2 Metals Mia Lithium Project (TSX-V: QTWO) and Ophir Gold's Radis Lithium Project (TSX-V: OPHR)
- Overlying 30km of the same greenstone belts which host lithium mineralisation at Mia and Radis
- Mia hosted by the spodumene-bearing Vieux Comptoir-3 granitic unit which is the mapped rock type as Corvette
- Highly regarded Dahrouge Geological Consulting on ground at Q2 and Ophir
- Same field teams currently completing work at Wapistan
- Traverses completed over two targets with samples delivered to the laboratory
- Remaining targets expected to be mapped & sampled by end of October
- Well located - State Route 109 (James Bay Rd) and Hydro Quebec powerlines run through the project, 40km from regional airport, accommodation nearby
- Neighbouring Q2 Metals preparing to drill their Mia Project

Indicative Forward Work Program





Synergistic Assets:
Express & Wapistan
Lithium Projects



Surrounded by
world-class lithium
projects and
discoveries



Tier 1 jurisdiction with
strong government
support



Outcropping
pegmatites
observed, maiden
lithium exploration
program



Aggressive
exploration
campaign initiated



Express vendor
identified, acquired
and vended Patriot
Battery Metals'
Corvette Property



For more information

Felicity Repacholi

Managing Director

felicity@rechargemetals.com.au

Alex Cowie

Media & Investor Relations

alexc@nwrcommunications.com.au

Appendix: Information Sources



Information within this Presentation has been sourced from the following:

- Slide 6
 - James Bay Mineral Resource of 110.2Mt @ 1.30% Li₂O, See Allkem (ASX: AKE) Announcement released 11 August 2023;
 - Whabouchi Mineral Reserve reported in accordance with NI 43-101, comprising Proven Mineral Reserve 19.0Mt @ 1.41% Li₂O and 17.6Mt @ 1.19% Li₂O Probable Mineral Reserve, See Nemaska Lithium Inc. (TSE: NMX) Updated NI 43-101 Technical Report dated 9 August 2019 (available for download at www.sedar.com);
 - Abitibi Lithium Hub, Mineral Resource of the North America Lithium (NAL) and Authier Projects, comprising 7.5Mt Measured, 80.3Mt Indicated and 31.2Mt Inferred Mineral Resources, See Sayona Mining (ASX: SYA) Investor Presentation released 27 May 2022;
 - Rose Ore Reserve 26.3 Mt @ 0.87% Li₂O Probable Ore Reserve, See Critical Elements Lithium Corp (TSX-V: CRE) announcement dated 13 June 2022;
 - Moblan Ore Reserve comprising 4.6Mt @ 1.57% Li₂O Proven Ore Reserve and 6.1Mt @ 1.27% Li₂O Probable Ore Reserve, See Sayona Mining (ASX: SYA) Investor Presentation released 27 May 2022;
 - Corvette Mineral Resource of 109.2Mt @ 1.42% Li₂O, See Patriot Battery Metals (TSX-V: PMET, ASX: PMT) ASX announcement released 31 July 2023
- Slides 7 & 8
 - Refer to REC ASX Announcements released 15 March 2023, 29 May 2023 and 18 October 2023 for exploration results;
 - Drill Intercepts at Anatacau West, Refer to Brunswick Exploration Inc (TSX-V: BRW) Announcements released 24 May 2023 and 20 July 2023; and
 - Grab sample Results at Anatacau Main - Anais Showing, Refer to Brunswick Exploration Inc (TSX-V: BRW) Announcement released 13 July 2023
- Slides 10 & 11
 - Refer to REC ASX Announcements released 14 June 2023, 20 July 2023, 28 August and 4 October 2023 for exploration results;
 - Refer to Q2 Metals (TSX-V: QTWO) News Releases released 21 December 2022, 29 June 2023 and 11 October 2023; and
 - Refer to Ophir Gold Corp (TSX-V: OPHR) News Releases released 14 March 2023 and 29 June 2023