

## **Alameda-2 Appraisal Update – Webinar Presentation**

**SYDNEY, AUSTRALIA (28 August 2023)**

Attached is a presentation that the company proposes to use for its webinar to be held today at 11:30AM AEST.

Released by authority:

**For and on Behalf of the Board of  
Directors:**

Mr Andrew Purcell  
Executive Chairman

Ends -

**For further information please contact:**

Mr Cate Friedlander  
Company Secretary  
+61 2 83 23 66 00

**MELBANA ENERGY LIMITED**

ASX Code: MAY

**Alameda-2 Appraisal Update**

28 August 2023



ersonal use only

# Disclaimer

**Summary of information:** This presentation contains general and background information about Melbana Energy's activities current as at the date of the presentation and should not be considered to be comprehensive or to comprise all the information that an investor should consider when making an investment decision. The information is provided in summary form and should not be considered to be comprehensive or complete.

**Not financial product advice:** This presentation is not financial product, investment advice or a recommendation to acquire securities and has been prepared without taking into account the objectives, financial situation or needs of individuals. Before making an investment decision investors should consider the appropriateness of the information having regard to their own objectives, financial situation and needs, and seek legal, taxation and financial advice appropriate to their jurisdiction and circumstances.

**Disclaimer:** Melbana Energy and its related bodies corporate and each of their respective directors, agents, officers, employees and advisers expressly disclaim, to the maximum extent permitted by law, all liabilities (however caused, including negligence) in respect of, make no representations regarding, and take no responsibility for, any part of this presentation and make no representation or warranty as to the currency, accuracy, reliability or completeness of any information, statements, opinions, conclusions or representations contained in this presentation. In particular, this presentation does not constitute, and shall not be relied upon as, a promise, representation, warranty or guarantee as to the past, present or the future performance of Melbana Energy.

**Future performance:** This presentation contains certain forward-looking statements and opinion. The forward-looking statements, opinion and estimates provided in this presentation are based on assumptions and contingencies which are subject to change without notice, as are statements about market and industry trends, which are based on interpretations of current market conditions. Forward-looking statements, including projections, forecasts and estimates, are provided as a general guide only and should not be relied on as an indication or guarantee of future performance and involve known and unknown risks, uncertainties and other factors, many of which are outside the control of Melbana Energy. Past performance is not necessarily a guide to future performance and no representation or warranty is made as to the likelihood of achievement or reasonableness of any forward looking statements or other forecast.

**Risks:** An investment in Melbana Energy is subject to investment and other known and unknown risks, some of which are beyond the control of Melbana Energy.

**Not an offer:** This presentation is not, and should not be considered as, an offer or an invitation to acquire securities in Melbana Energy or any other financial products and neither this document nor any of its contents will form the basis of any contract or commitment. This presentation is not a prospectus. Offers of securities in Melbana Energy will only be made in places in which, or to persons to whom it would be lawful to make such offers. This presentation must not be disclosed to any other party and does not carry any right of publication. Neither this presentation nor any of its contents may be reproduced or used for any other purpose without the prior written consent of Melbana Energy.

**No Distribution in the US:** This presentation is not an offer of securities for sale in the United States. Any securities to be issued by Melbana Energy have not been and will not be registered under the US Securities Act of 1933, as amended (the "US Securities Act") and may not be offered or sold in the United States absent registration or an exemption from registration under the US Securities Act. No public offer of the securities is being made in the United States and the information contained herein does not constitute an offer of securities for sale in the United States. This presentation is not for distribution directly or indirectly in or into the United States or to US persons.

**Monetary values:** Unless otherwise stated, all dollar values are in Australian dollars (A\$). The information in this presentation remains subject to change without notice.

**No distribution:** Distribution of this presentation may be restricted by law. Persons who come into possession of this presentation should seek advice on and observe any such restrictions. Any failure to comply with such restrictions may constitute a violation of applicable securities laws.

**Contingent and Prospective Resources:** Unless otherwise specified, the information that relates to Contingent Resources and Prospective Resources for Melbana is based on, and fairly represents, information and supporting documentation compiled by Mr. Dean Johnstone, who is an employee of the company and has more than 34 years of relevant experience. Mr. Johnstone is a member of the American Association of Petroleum Geologists. Mr. Johnstone consents to the publication of the resource assessments contained herein. The Contingent Resource and Prospective Resource estimates are consistent with the definitions of hydrocarbon resources that appear in the ASX Listing Rules.

**Prospective Resources Cautionary Statement (PRSC):** The estimated quantities of petroleum that may potentially be recovered by the application of a future development project(s) relate to undiscovered accumulations. These estimates have both an associated risk of discovery and a risk of development. Future exploration appraisal and evaluation is required to determine the existence of a significant quantity of potentially moveable hydrocarbons.

# Index

1. Videos from the field
2. Objectives for Alameda-2 Appraisal Well
3. Alameda-2 Test Sequence
4. Structural interpretation
5. Summary of Alameda-2 appraisal results
6. Forward program
7. Q&A

ersonal use only



# Videos from the field

Oil in the tanks  
from DST-4  
(Unit-1B)

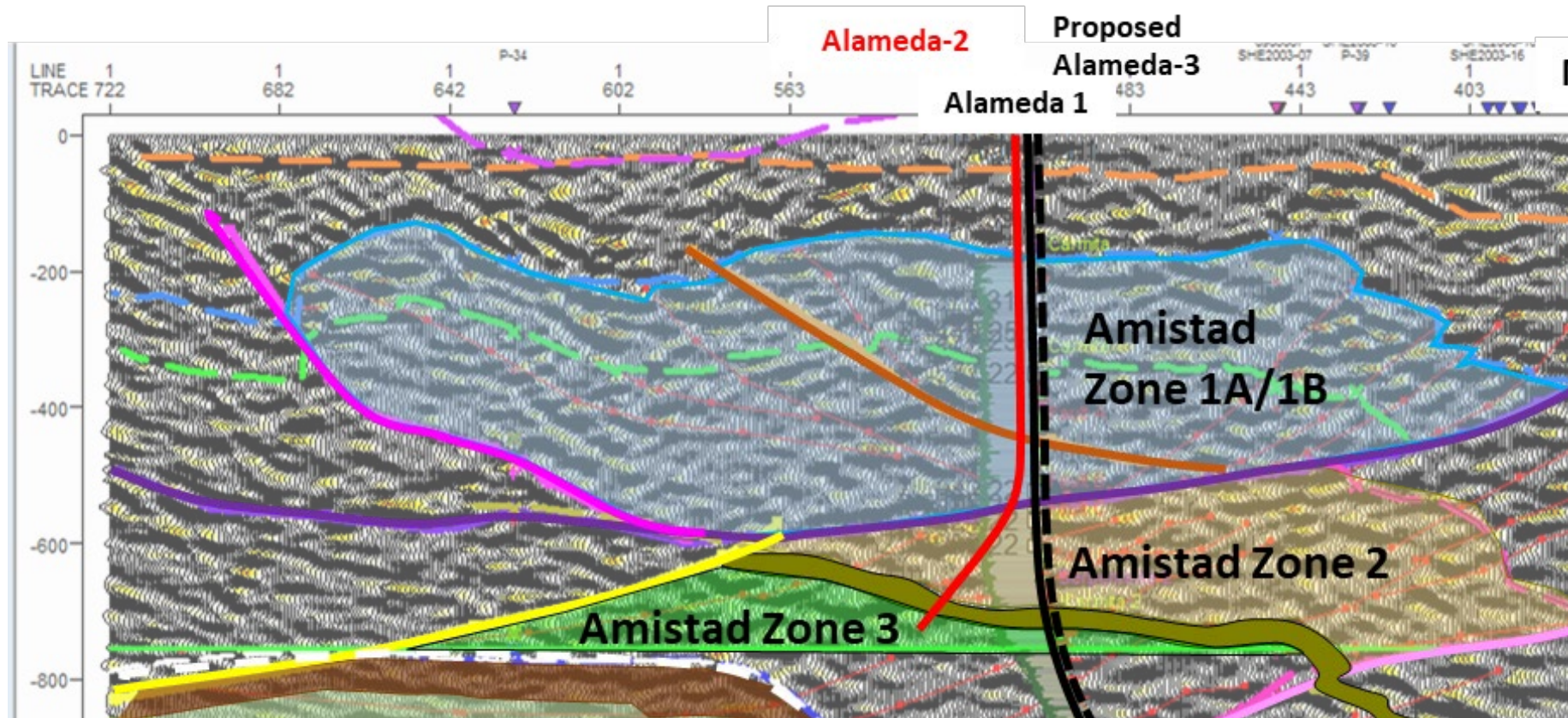


First look at oil  
from Unit-1B

ersonal use only



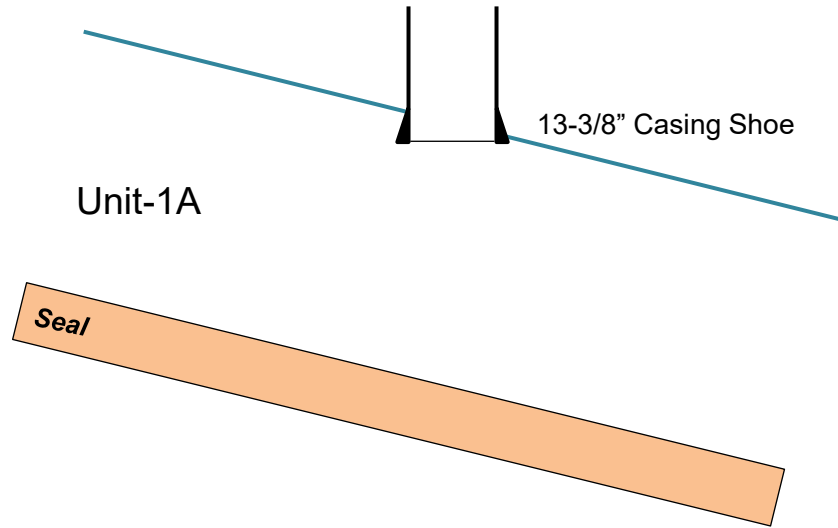
# Objectives for Alameda-2 Appraisal Well



ersonal use only

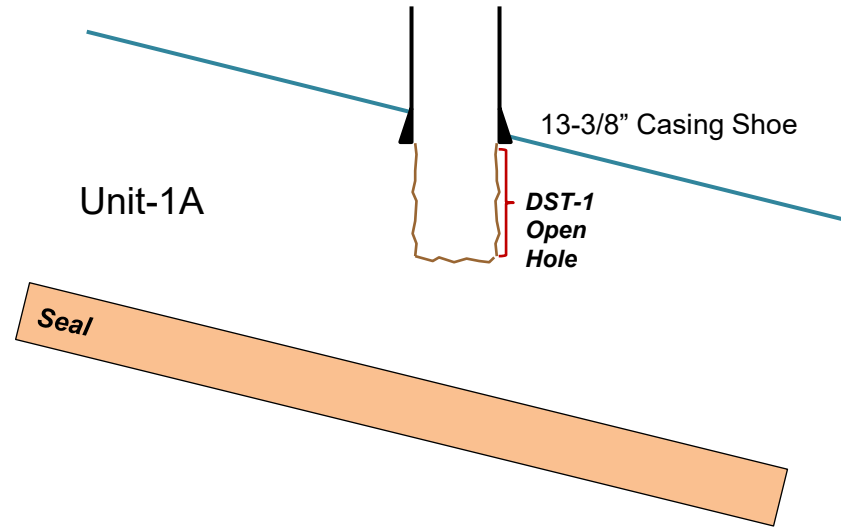
# Alameda-2 Test Sequence

Set 13-3/8"  
Casing in seal  
above Unit-1A



# Alameda-2 Test Sequence

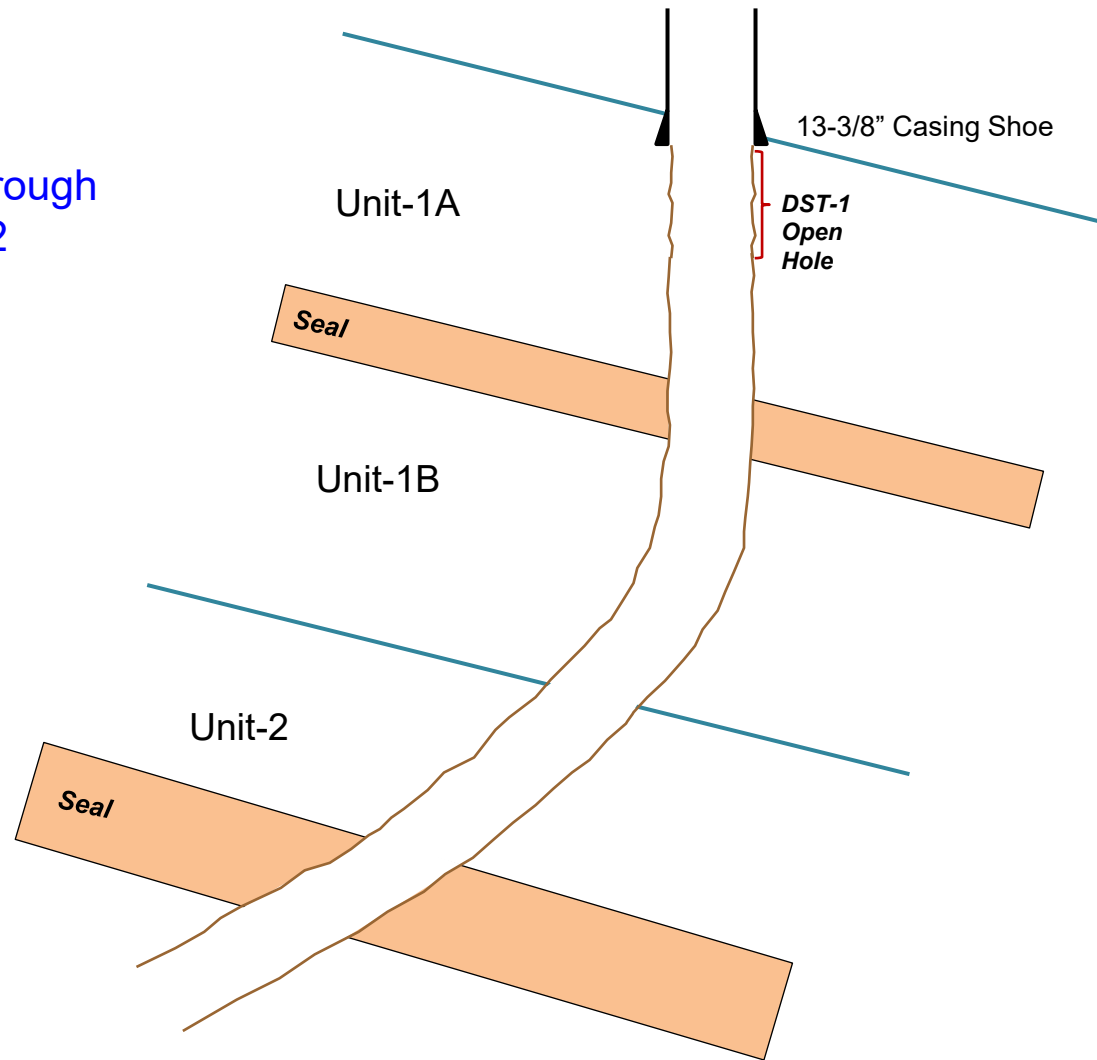
Drill 8-1/2" hole into Unit-1A and Flow test DST-1 in open hole





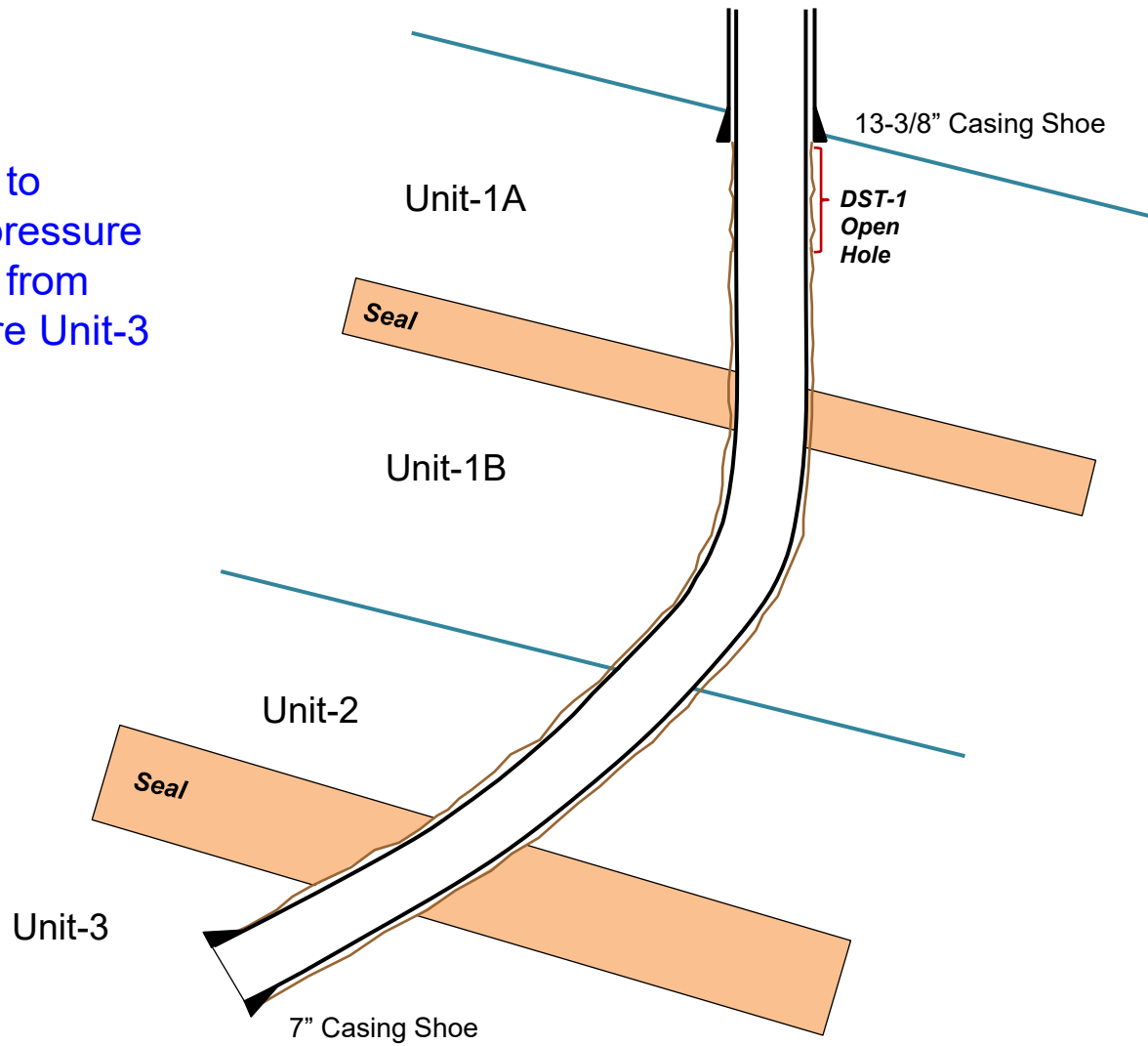
# Alameda-2 Test Sequence

Drill 8-1/2" hole through  
Units 1A, 1B and 2



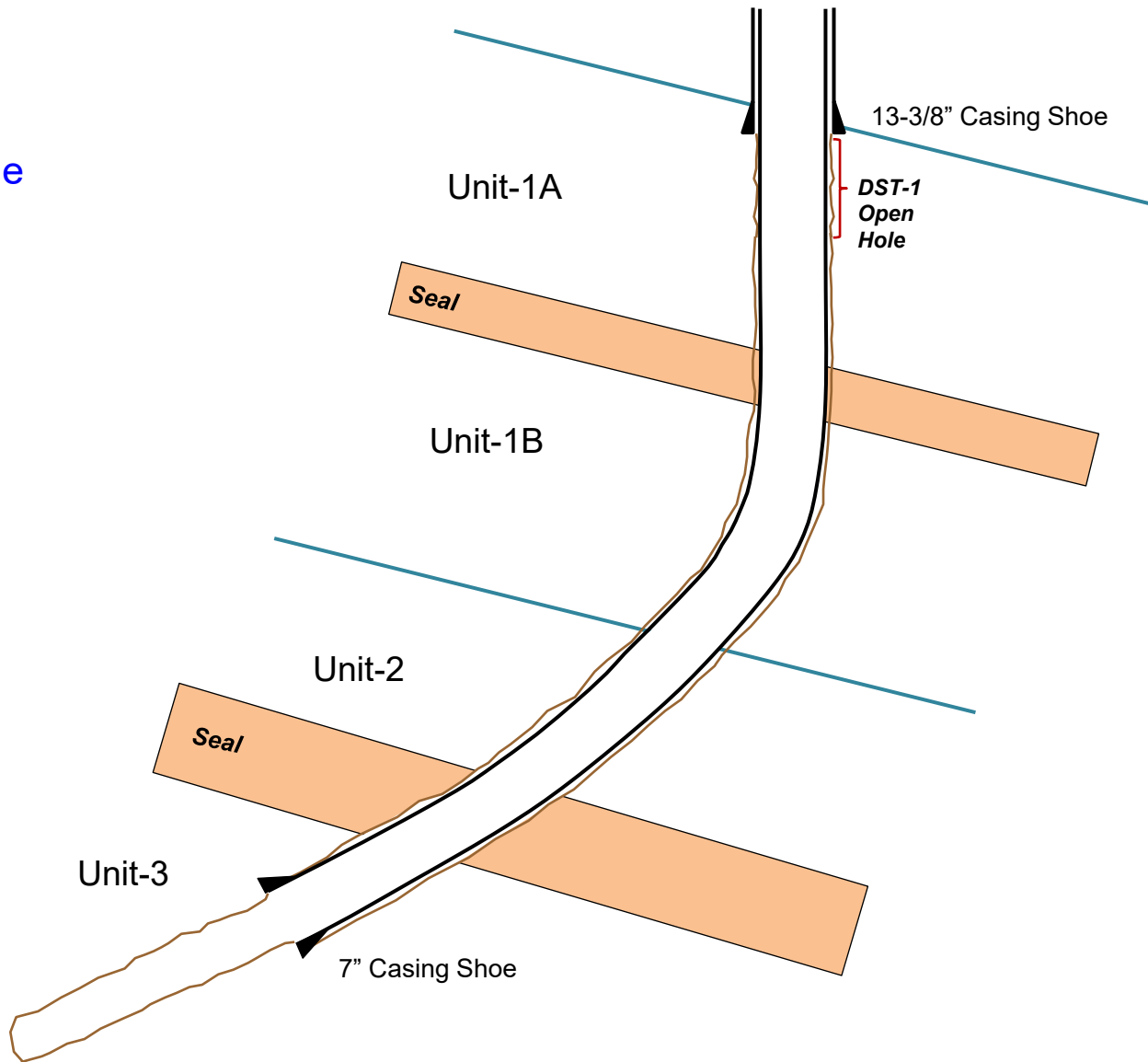
# Alameda-2 Test Sequence

Run 7" casing to isolate lower pressure Units 1A & 1B from higher pressure Unit-3



# Alameda-2 Test Sequence

Drill 6" Hole  
into Unit-3

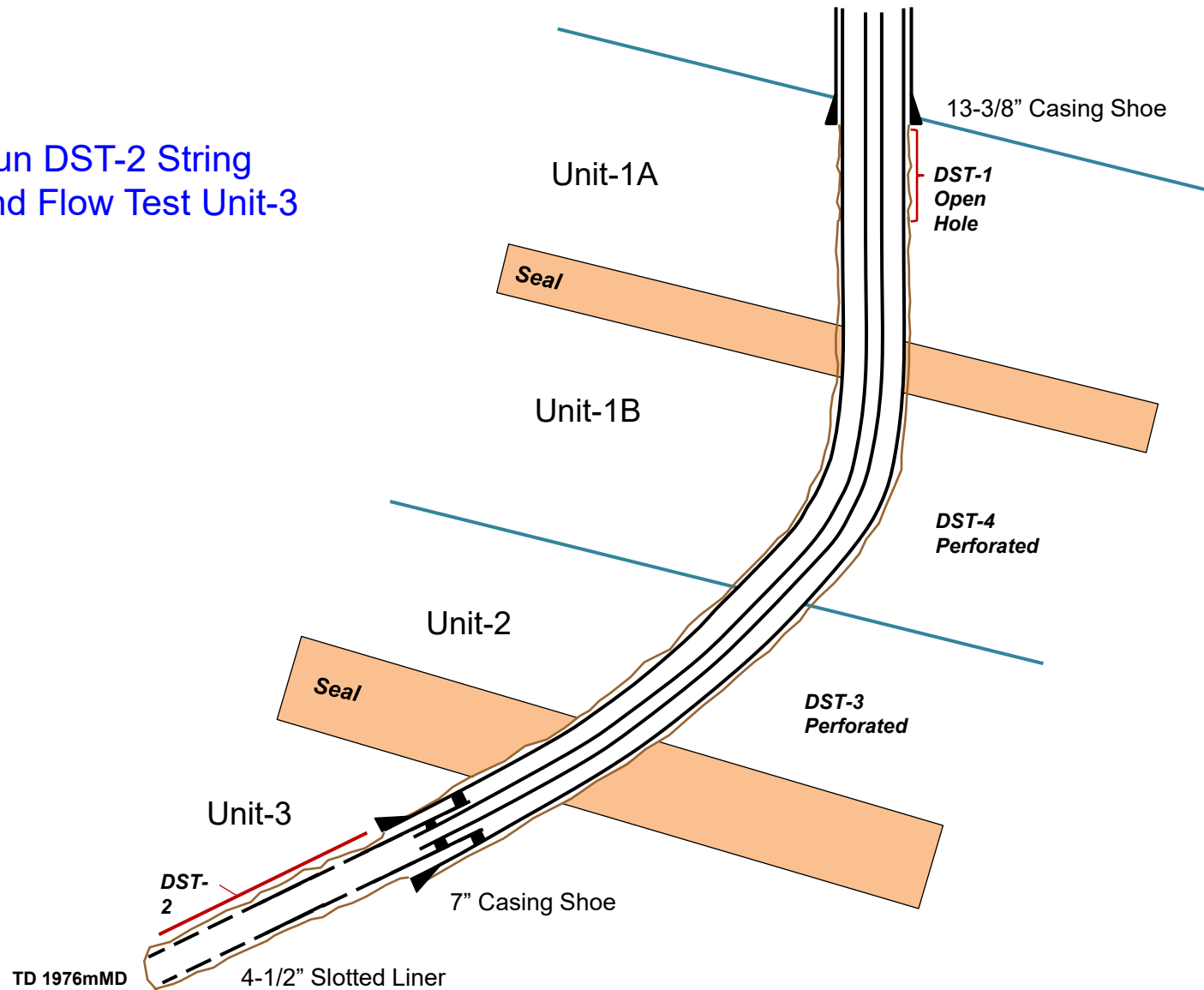


TD 1976mMD



# Alameda-2 Test Sequence

Run DST-2 String  
and Flow Test Unit-3



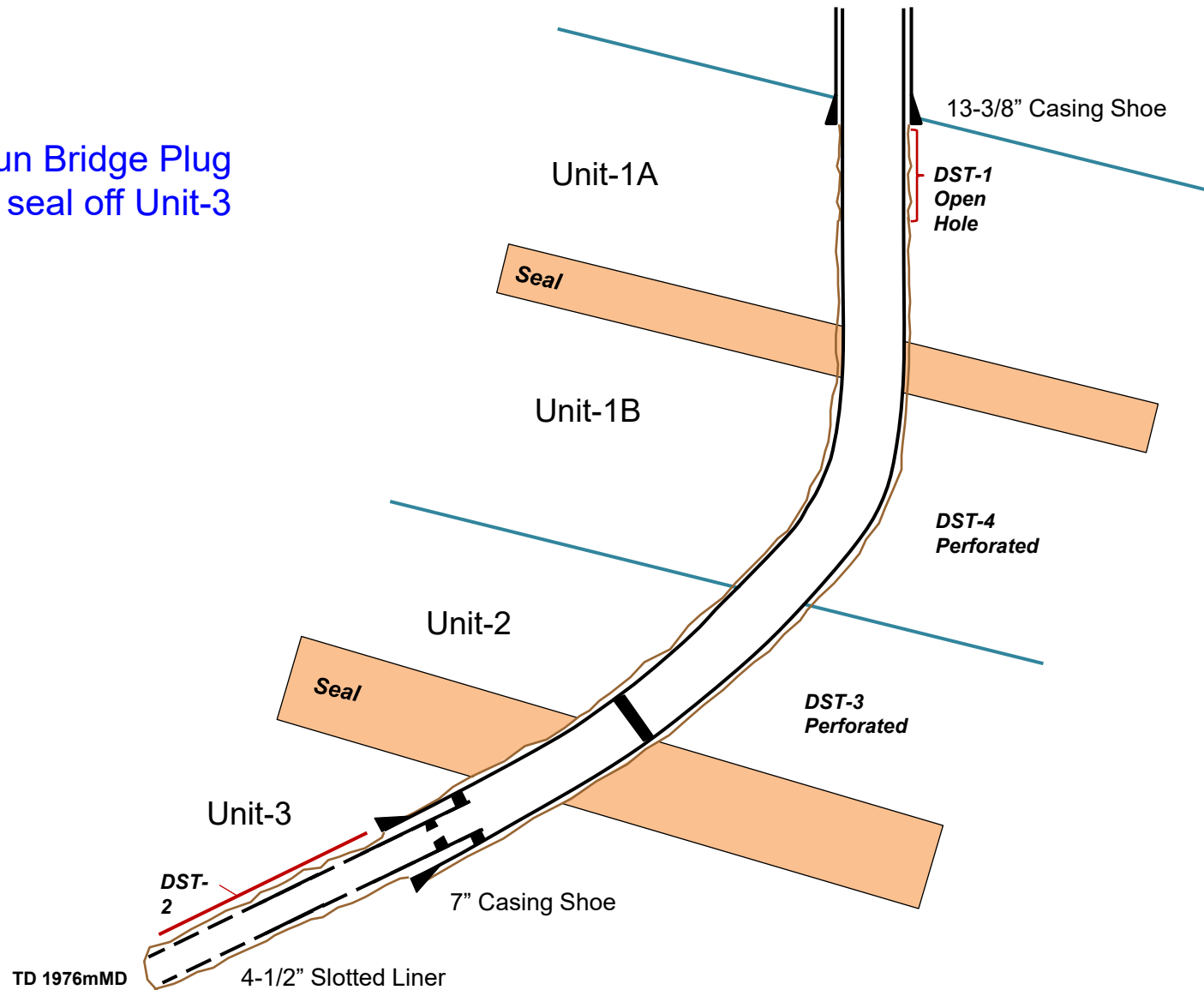
TD 1976mMD

4-1/2" Slotted Liner



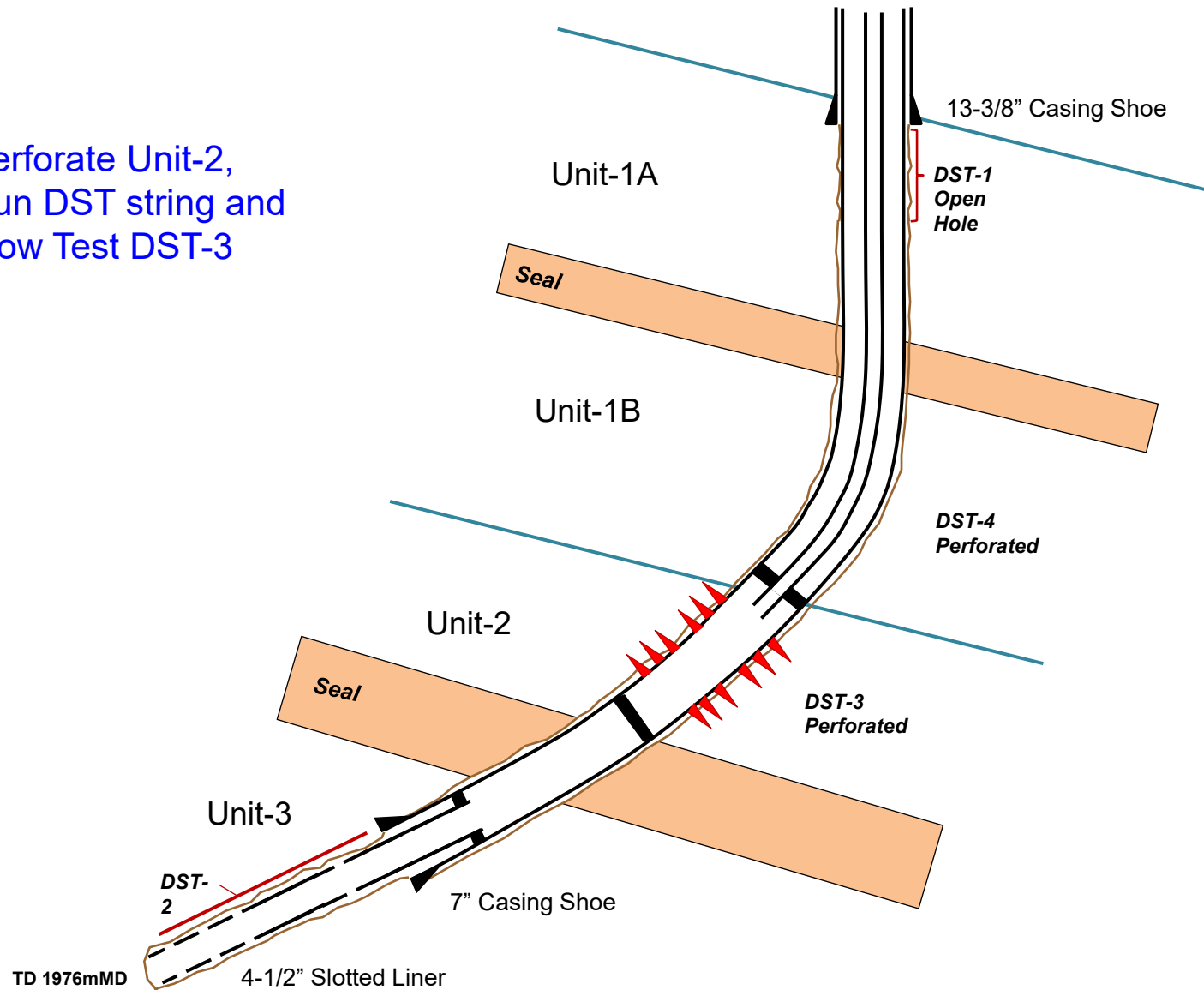
# Alameda-2 Test Sequence

Run Bridge Plug  
to seal off Unit-3



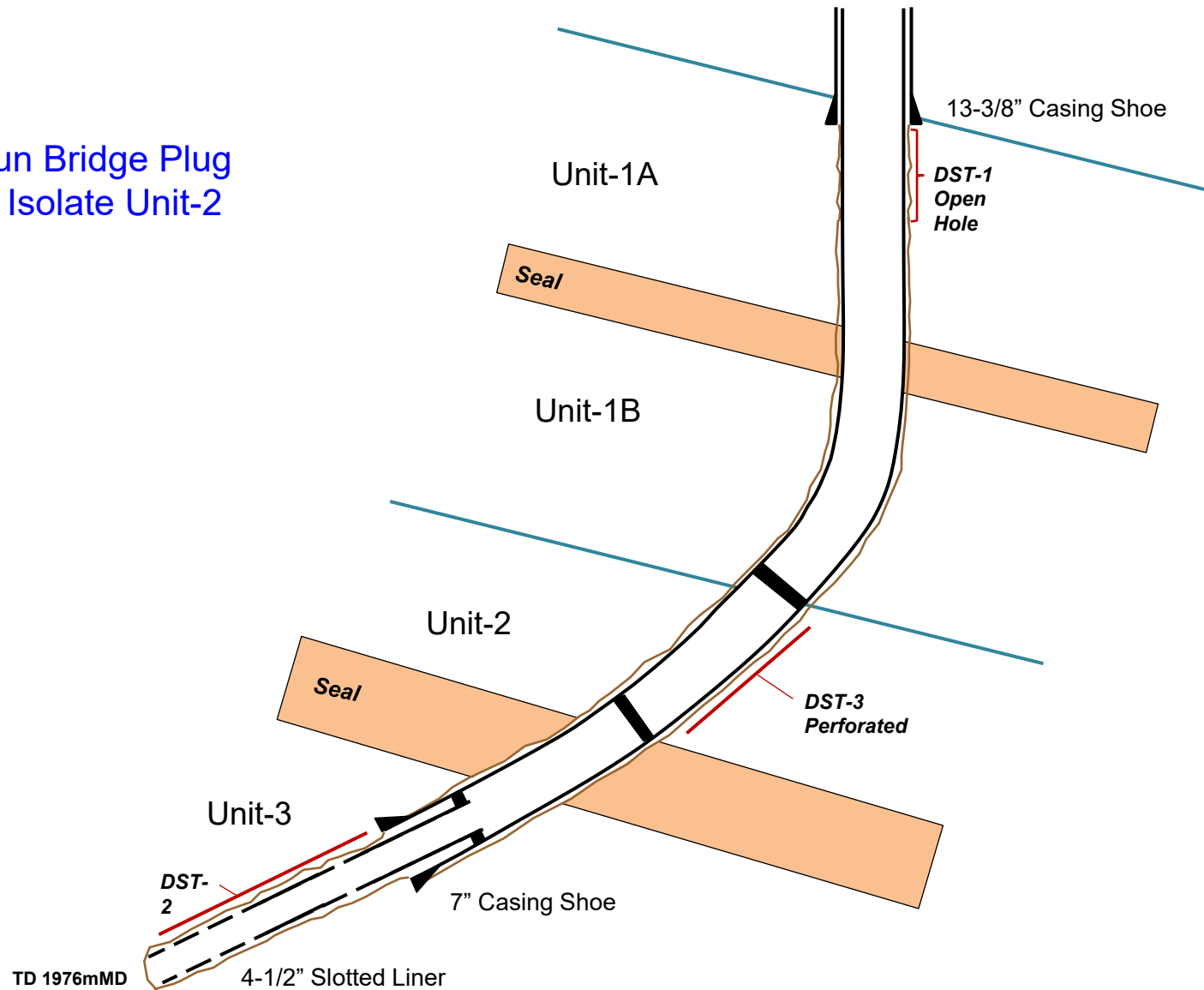
# Alameda-2 Test Sequence

Perforate Unit-2,  
Run DST string and  
Flow Test DST-3



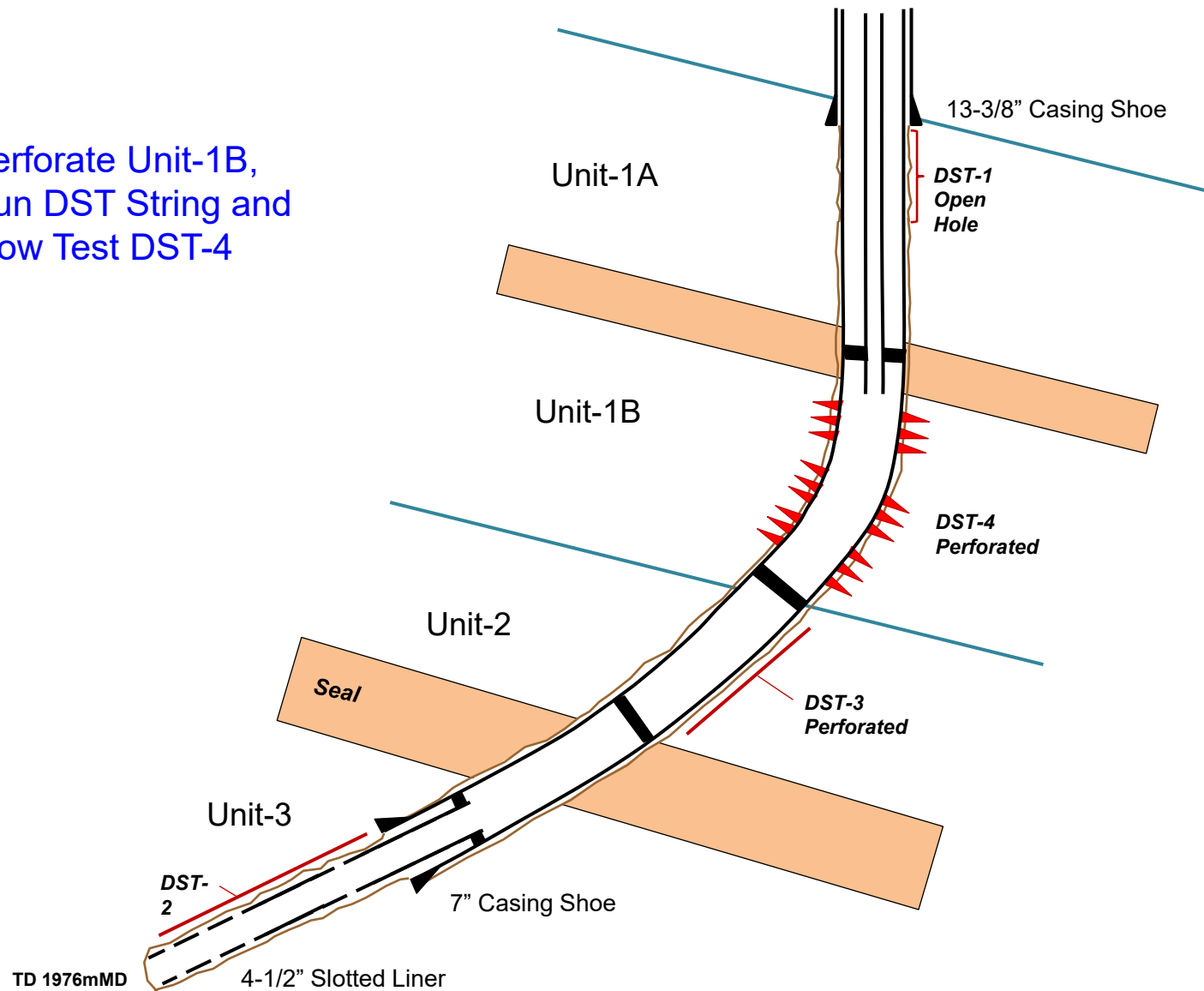
# Alameda-2 Test Sequence

Run Bridge Plug to Isolate Unit-2



# Alameda-2 Test Sequence

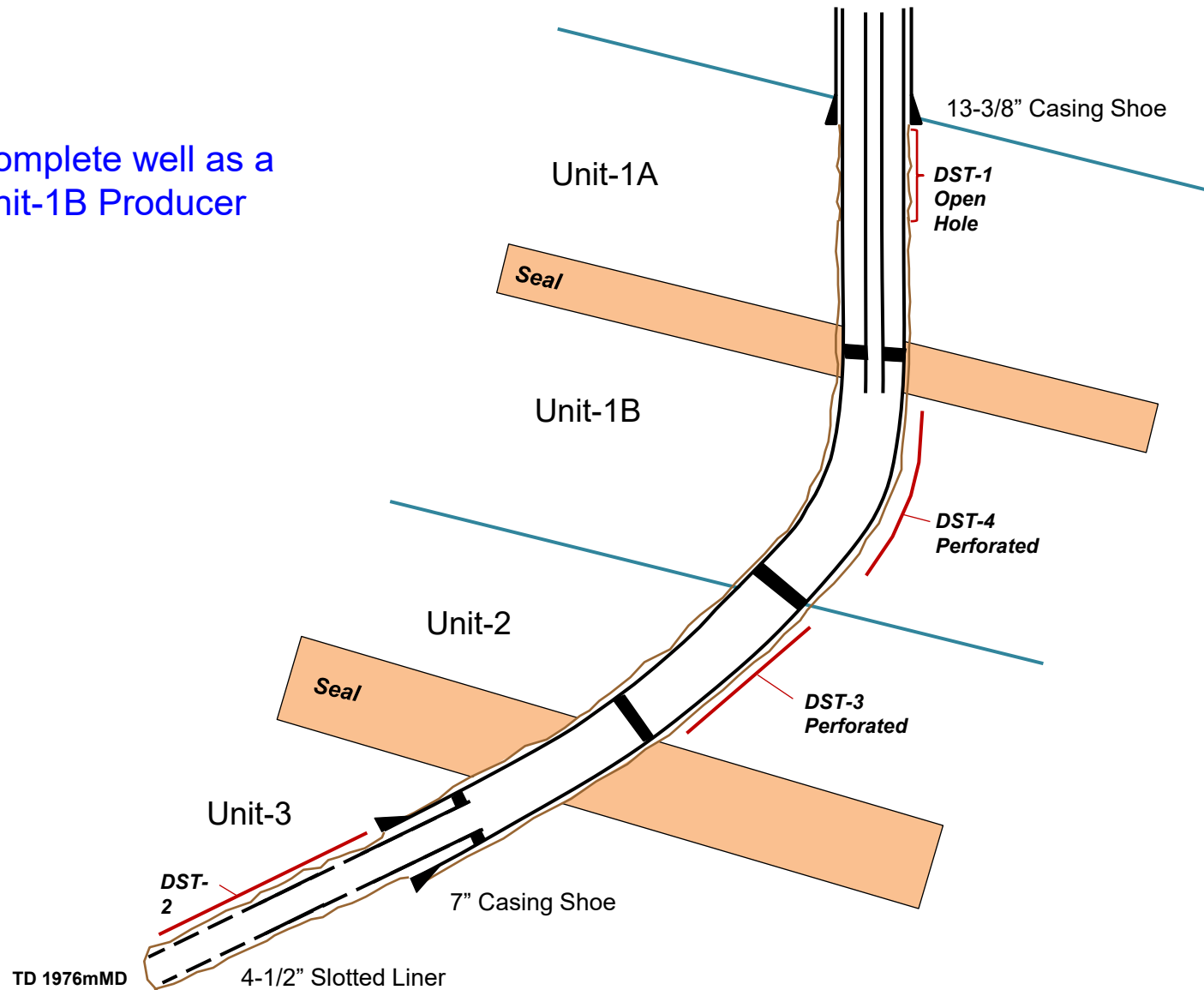
Perforate Unit-1B,  
Run DST String and  
Flow Test DST-4



ersonal use only

# Alameda-2 Test Sequence

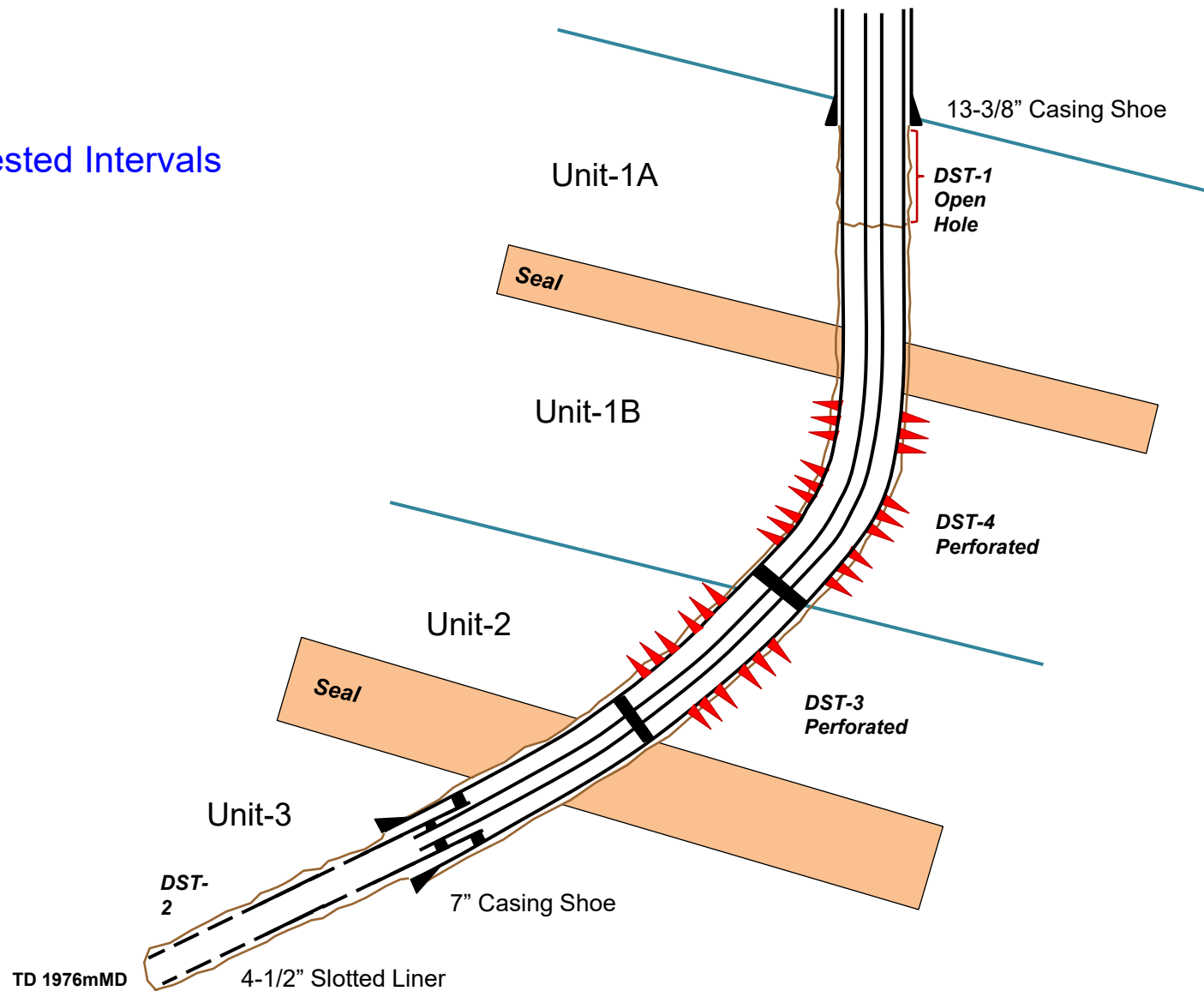
Complete well as a Unit-1B Producer





# Alameda-2 Test Sequence

Tested Intervals

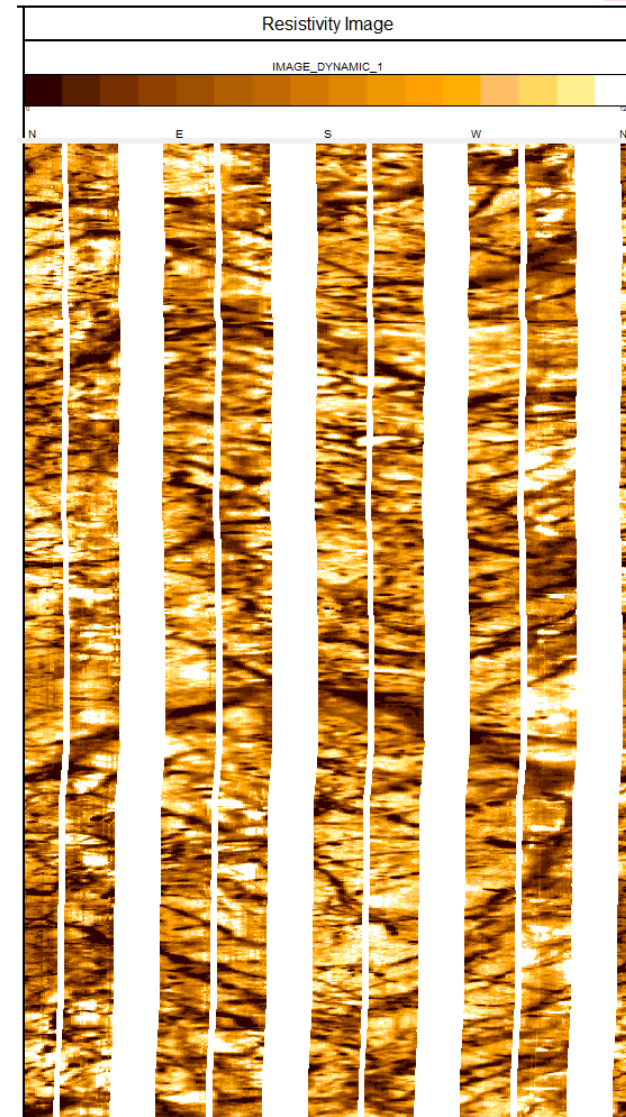


TD 1976mMD

4-1/2" Slotted Liner

# Alameda-2 Test Sequence

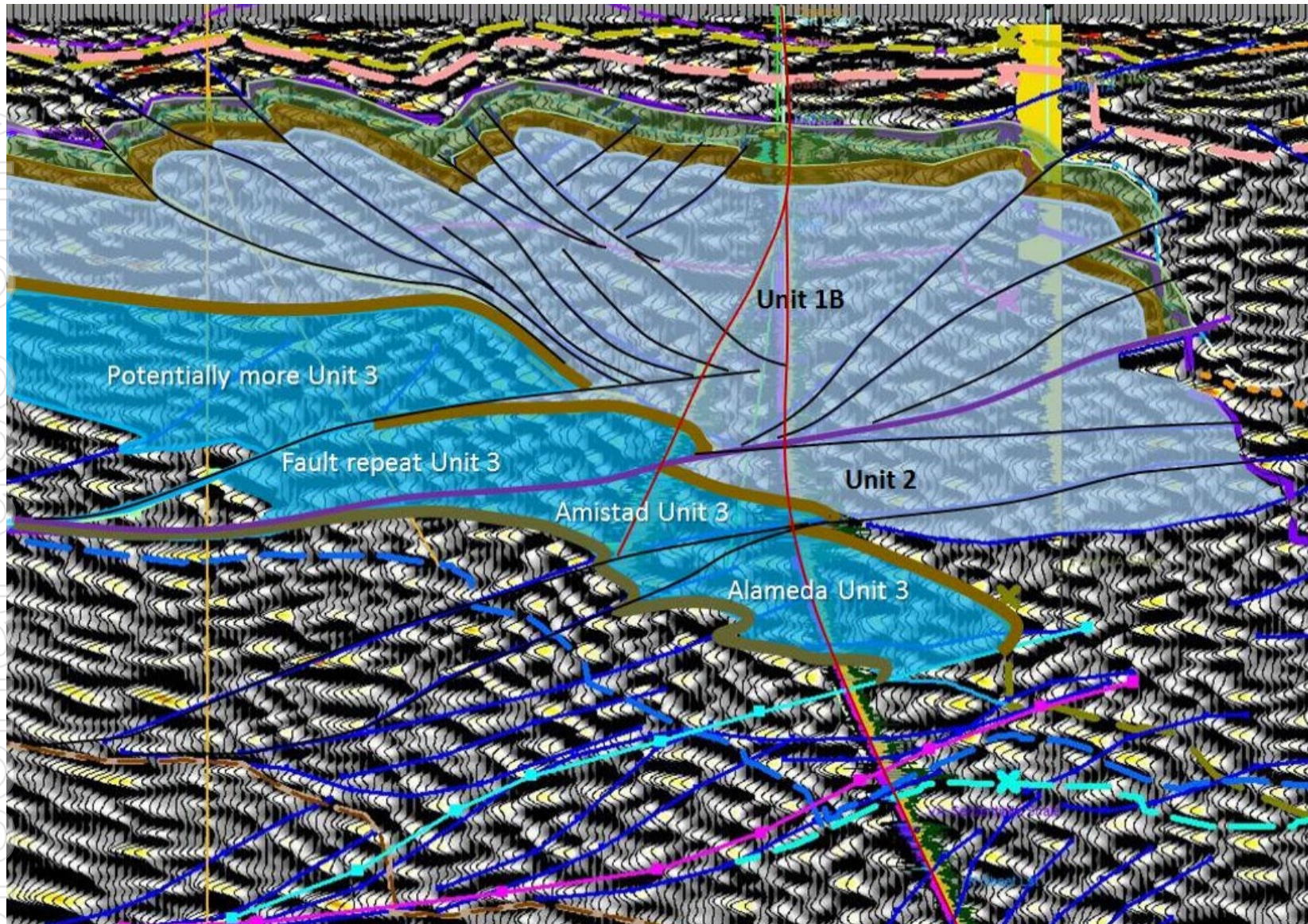
Resistivity borehole image located directly opposite the Unit 1B perforations. High density of natural fractures are the contributing factor to high oil flow rate.



ersonal use only



# Structural Interpretation – Correlation between Alameda-1 and Alameda-2



Unit 1A	heavier oil (12° API)
Shale seal	
Unit 1B	lighter oil (19° API)
Unit 2	Footwall repeat of Unit 1B
Unit 3	Alameda-2 Fault repeated above Alameda-1 Unit 3
Unit 3	Alameda-1



# Summary of Alameda-2 appraisal results to date

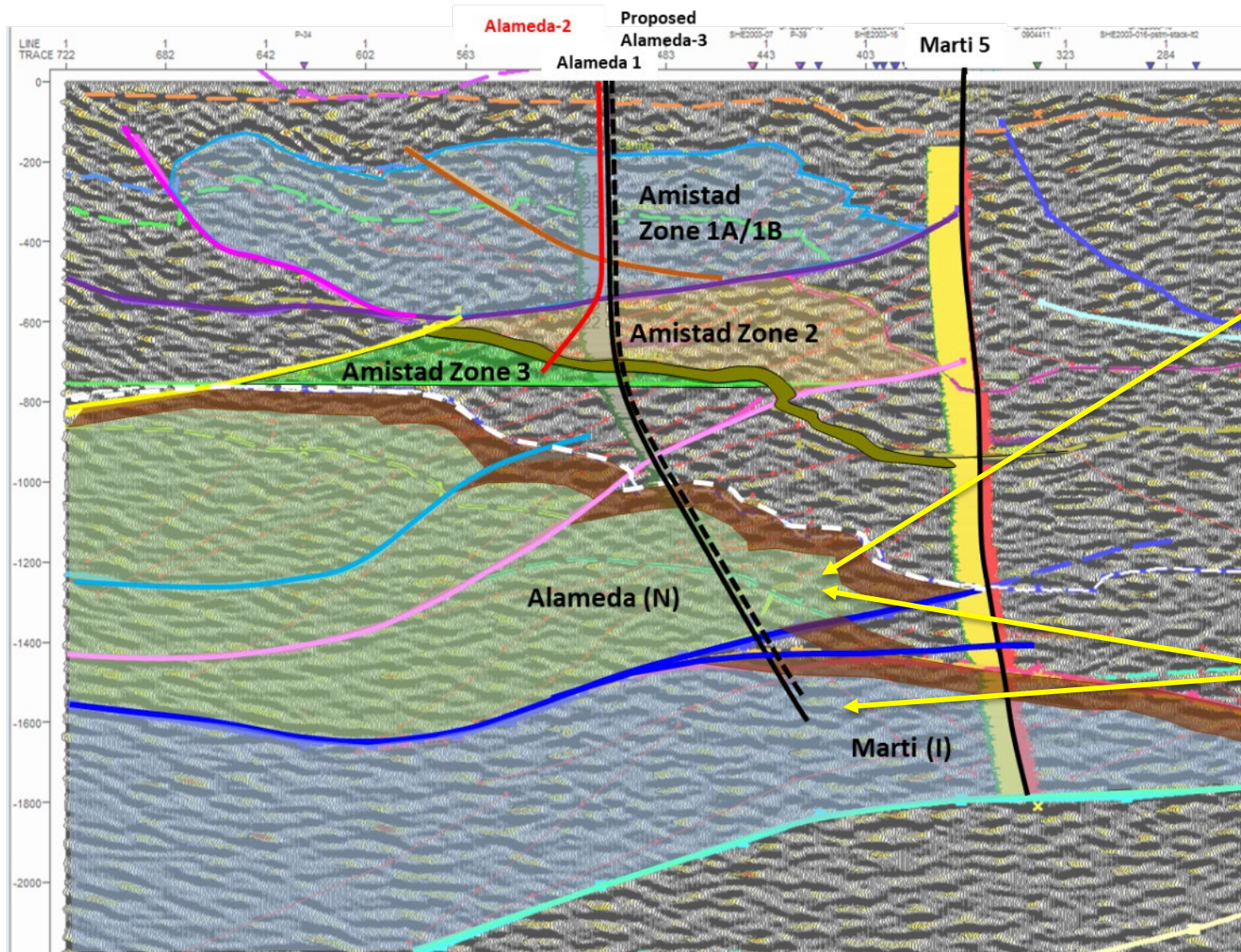
- Unit 1A recovered 11.7° API oil with 3,783 cP viscosity at surface from a 63 metre MD interval starting from 445 metres MD. Flow rates at surface not established but 40 barrels of oil flowed unassisted to surface (through a 32/64" choke), exceeding expectations.
- Unit 3 intercepted 200 metres updip and 500 metres to the south of where Alameda-1 intercepted it. Moveable oil of a similar quality to Unit 1A confirmed. Testing indicated potential to flow at about 750 bopd.
- Pre-drill prognosed Unit 2 DST did not demonstrate moveable hydrocarbons to surface at the location tested.
- Unit 1B recovered 18.7° API oil with 30 cP viscosity at surface from a 70 metre TVD perforated section – less than 20% of the total Net Pay for Unit 1B (when incorporating fractures). Stabilised unassisted flow rate to surface of 1,235 bopd measured over 12 hours on a 36/64" choke, peaking at 1,903 bopd.
- Logged Net Pay for the entire Amistad Formation has been increased from 109 metres to 346 metres TVD – further increasing to 615 metres when the highly fractured limestones are incorporated (45% of the gross interval).
- Unit 1B has now been completed for future production, whilst Units 1A and 3 have been suspended for potential future development and production.



*Alameda-2 Completions Ran Successfully*



# Forward Program



## Alameda

- intercepted down dip. Potential for more interval thickness.

## Alameda + Marti

- High formation pressures.
- Quality oil shows.
- Together, potential for higher recoveries unassisted at surface.





Melbana Energy Limited  
ABN 43 066 447 952

Mezzanine Floor, 388 George Street  
Sydney NSW 2000  
AUSTRALIA

Contact

Telephone:

+61 (2) 8323 6600

Email:

[admin@melbana.com](mailto:admin@melbana.com)

