

For personal use only

LYCAON RESOURCES

Discovery focussed exploration company searching for critical minerals essential for the clean energy transition - Niobium, REE, Ni, Cu



Investor Presentation August 2023

Disclaimer



Corporate Presentation

The information contained in this presentation is provided by Lycaon Resources Limited (“Lycaon”) and its related bodies corporate (the “Group”) for background informational purposes only. The information in this presentation is not investment advice, is not intended to be used as the basis for making an investment decision and does not constitute an offer to issue or arrange to issue, or the solicitation of an offer to issue, securities of Lycaon. Lycaon has made reasonable efforts to ensure that the information contained in this presentation is accurate as of the date hereof, however, there may be inadvertent or unintentional errors. No representation or warranty, express or implied, is made as to the fairness, accuracy, completeness or correctness of the information contained in this presentation. To the maximum extent permitted by law, none of Lycaon nor its directors, officers, employees or agents, nor any other person, accepts any liability, including, without limitation, any liability arising out of fault or negligence, for any loss arising from the use of the information contained in this presentation.

Technical Information

This presentation includes disclosure of scientific and technical information. The information in this document is based on, and fairly represents information and supporting documentation reviewed by Mr Thomas Langley, a Competent Person who is a Member of the Australian Institute of Geoscientists. Mr Thomas Langley is a Director of the Company. Mr Thomas Langley has sufficient experience that is relevant to the style of mineralisation and type of deposit under consideration and to the activity being undertaken to qualify as a Competent Person as defined in the 2012 Edition of the “Australasian Code for Reporting of Exploration Results, Mineral Resources and Ore Reserves”. Mr Thomas Langley has approved this document as a whole in the form and context in which it appears.

Forward-looking statements

Certain information contained in this presentation may contain “forward-looking statements”. Forward-looking statements may include, but is not limited to, information with respect to the future financial and operating performance of Lycaon, its subsidiaries and affiliates, the estimation of Mineral Reserves and Mineral Resources, realization of Mineral Reserve and Mineral Resource estimates, costs and timing of development of Lycaon’s projects, costs and timing of future exploration, timing and receipt of approvals, consents and permits under applicable legislation, results of future exploration and drilling and adequacy of financial resources. Forward-looking statements are often characterized by words such as “plan”, “expect”, “budget”, “target”, “project”, “intend”, “believe”, “anticipate”, “estimate” and other similar words or statements that certain events or conditions “may” or “will” occur.

Forward-looking statements are subject to known and unknown risks, uncertainties and other factors that may cause actual results to be materially different from those expressed or implied by such forward-looking statements, including: risks associated with investments in publicly listed companies; risks associated with general economic conditions; fluctuations in commodity prices; the inherent risks and dangers of mining exploration and operations in general; the possibility that required permits may not be obtained; environmental risks; uncertainty in the estimation of Mineral Resources and Mineral Reserves; general risks associated with the feasibility, development and production of each of Lycaon's projects; the risk that further funding may be required, but unavailable, for the ongoing exploration, development and production of Lycaon’s projects; changes in laws or government regulations, policies or legislation; unforeseen expenses; fluctuation in the exchange rate of the Australian dollar; litigation risk; risks of being unable to sell production resulting from the development of a project; uninsured hazards; disruptions to Lycaon’s supplies or service providers; reliance on key personnel; retention of key employees; absence of dividends; and competition.

Forward-looking statements are based on the reasonable assumptions, estimates, analysis and opinions of management made in light of their experience and their perception of trends, current conditions and expected developments, as well as other factors that management believes to be relevant and reasonable in the circumstances at the date that such statements are made, but which may prove to be incorrect. Lycaon believes that the assumptions and expectations reflected in such forward-looking statements are reasonable.

Readers are cautioned that the foregoing list is not exhaustive of all factors and assumptions which may have been considered by Lycaon. Although Lycaon has attempted to identify important factors that could cause actual results to differ materially from those contained in forward-looking statements, there may be other factors that cause results not to be as anticipated, estimated or intended. There can be no assurance that such information will prove to be accurate, as actual results and future events could differ materially from those anticipated in such information. Accordingly, the forward looking information contained in this release is expressly qualified in its entirety by this qualifying statement and readers should not place undue reliance on forward-looking statements. Lycaon does not undertake to update any forward-looking statements, except in accordance with applicable securities laws.

CORPORATE OVERVIEW

Pat Burke Non-Executive Chairperson

- Extensive legal and corporate advisory experience in ASX companies
- Active Board member of several ASX listed companies, including recently as Executive Chairman of Meteoric Resources and Non-Executive Chairman of Province Resources Limited

Thomas Langley Technical Director

- +10 years geologist focussed on economic discoveries
- Lanthanein Resources - led the discovery of high grade REE's at the Gascoyne Lyons project
- BSc (UWA) and MSc Econ Geol (CODES)

Ranko Matic Non-Executive Director

- Chartered Accountant with over 30 years in the areas of financial and executive management, accounting, and corporate advisory

Melanie Ross Company Secretary

- 20 years experience in financial accounting and corporate advisory

Capital Structure

(24 August 2023)

ASX Ticker	LYN
Ordinary Shares	42,906,251
Unlisted Options (ex. \$0.30)	4.4M
Share Price (25/08/2023)	\$0.27
Market Capitalisation (\$0.27cps)	\$11.58M
Cash at Bank (post Placement 26/7/23)	~\$3.9M
Debt	Nil
Enterprise Value	\$7.68M

Shareholders

Substantial Shareholders

Inyati Fund	~6%
Board & Management	~6%

BOW RIVER

Currently diamond drilling onsite targeting another 'Savannah North' ± 'Nova' style magmatic nickel-copper discovery

Drillholes designed to investigate **large gravity anomaly defined in geophysical surveys that remain untested** at depth located down plunge from historical high-grade nickel and copper mineralisation

Bow River Project consists of ~10km² layered mafic intrusion with a **high grade gossan at surface** over 900m x 300m, historic sampling at surface recorded **up to 28% Cu**

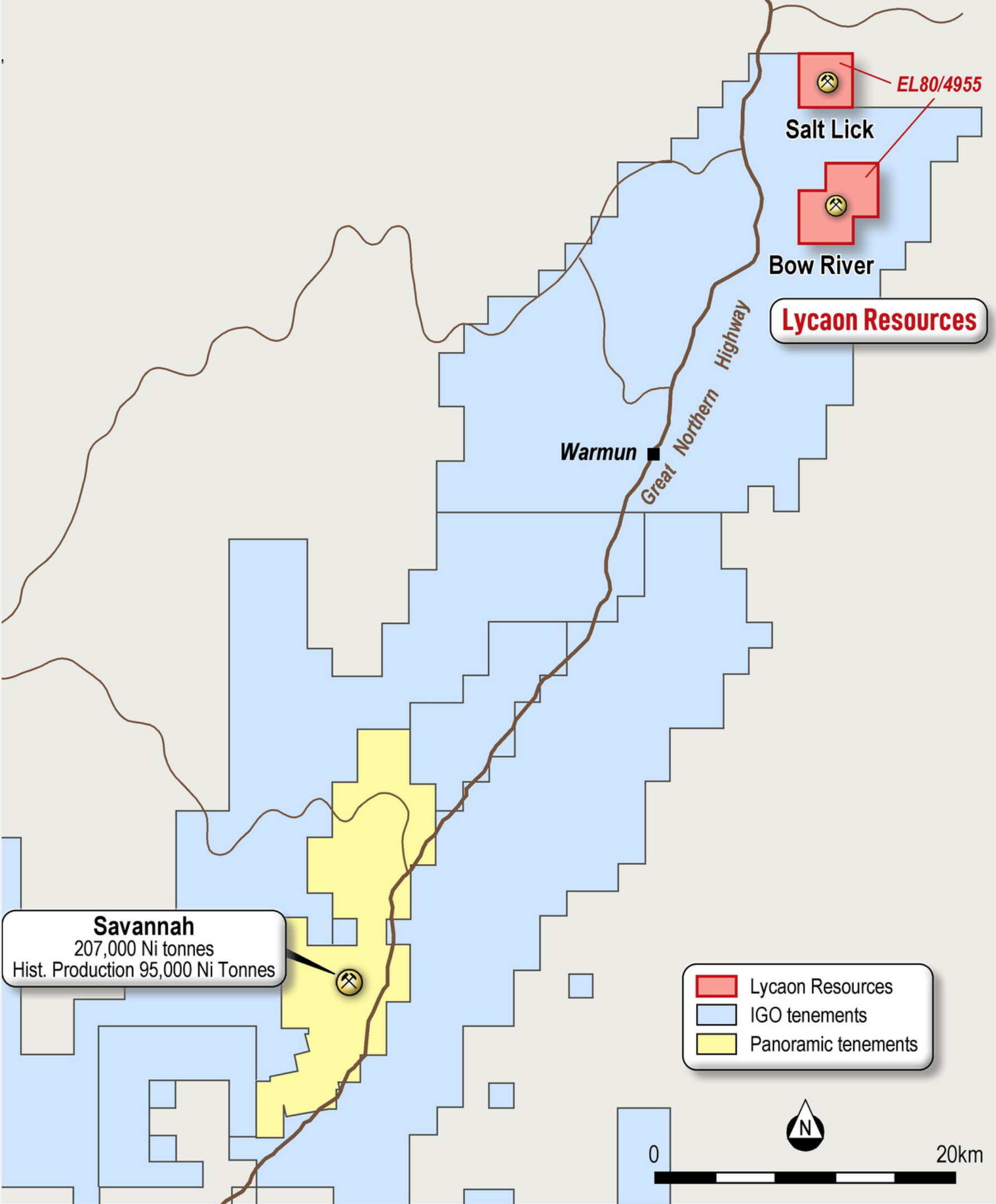
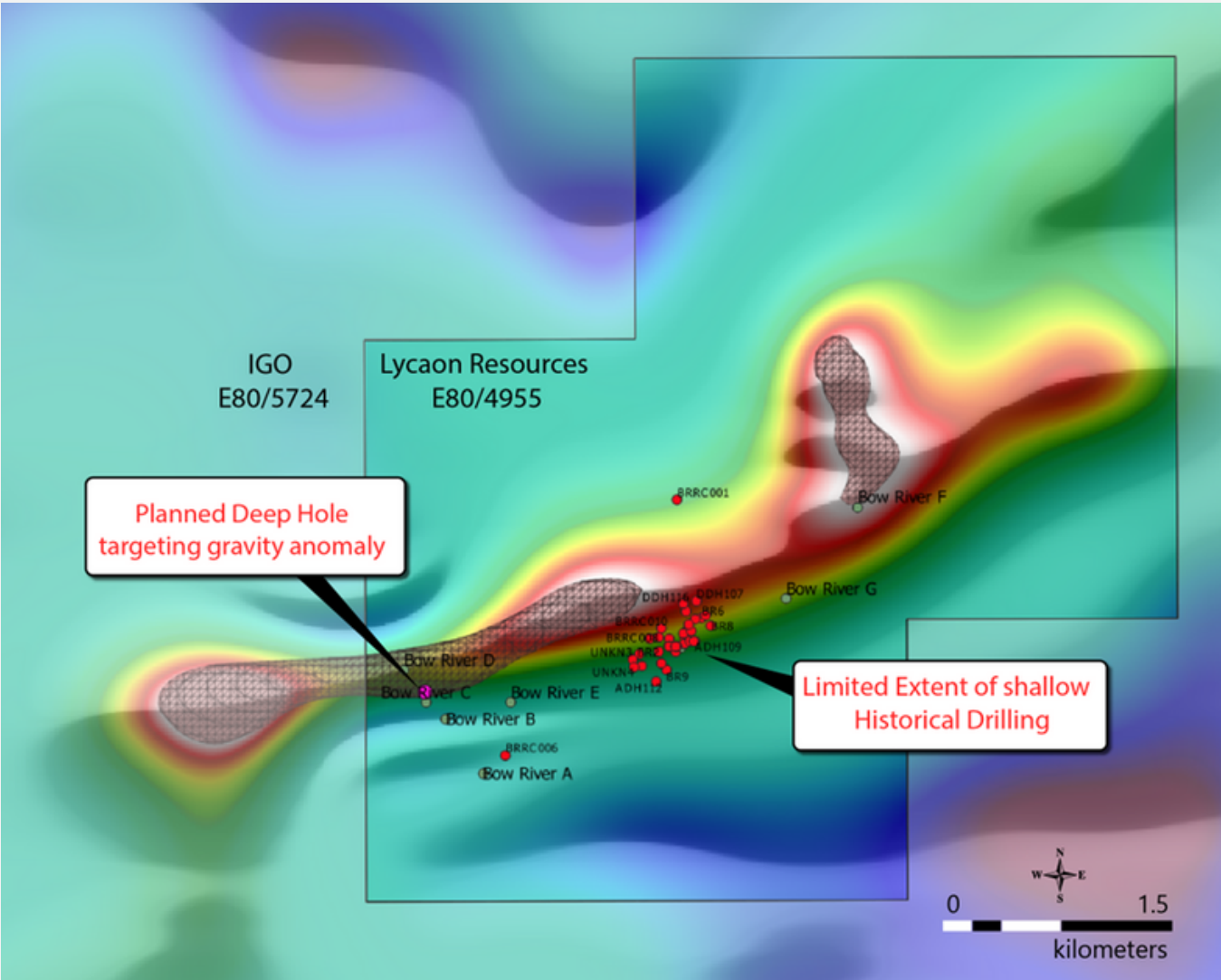
The recent discovery (2014) of the Savannah North resource at depth adjoining the existing mine (effectively **quadrupling the Ni-Cu-Co resource**) has highlighted the **significant discovery potential at depth within these mafic intrusives**



BOW RIVER

Diamond drilling scheduled to take approximately 4 weeks consisting of two diamond drillholes with prospective gravity target zone anticipated to be intersected between 350m to 750m depth

Other active explorers in the region include IGO and Panoramic Resources



WEST ARUNTA

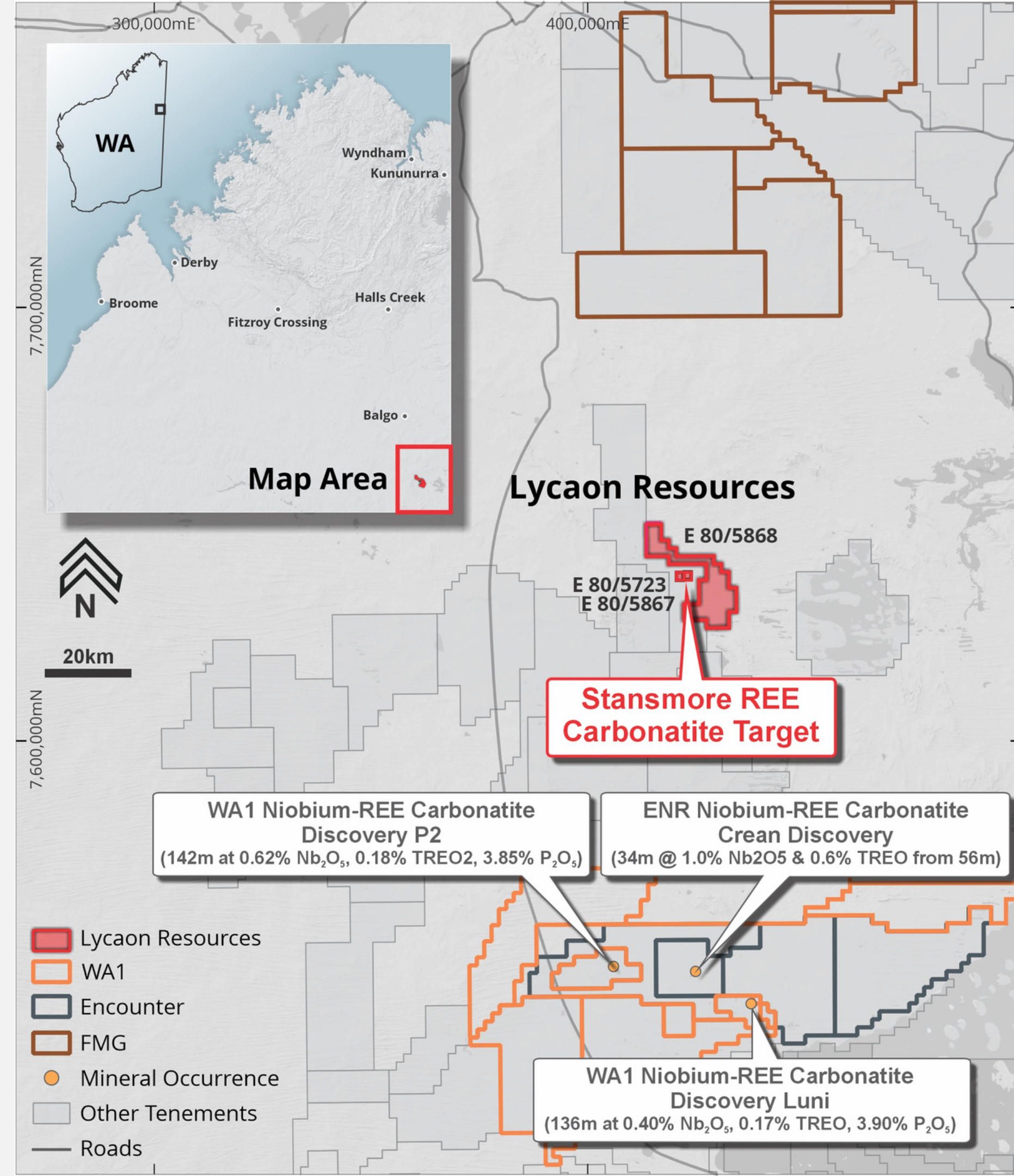
Stansmore West Arunta Niobium-REE Carbonatite Project covers **172km² granted tenement E80/5723, 80/5867 and 80/5868**

700m long magnetic feature with striking similarities to WA1 Niobium-REE Carbonatite discovery and ENR IOCG-REE discoveries

First mover advantage pegged in November 2021 prior to recent discoveries

Located at **juncture of two major regional faults** and offset from major North Australia Craton Boundary

Long been recognised as a **regionally significant magnetic feature** of interest, with historic exploration targeting diamondiferous kimberlites by BHP in 1982 - **never explored for critical minerals Niobium and REE's**

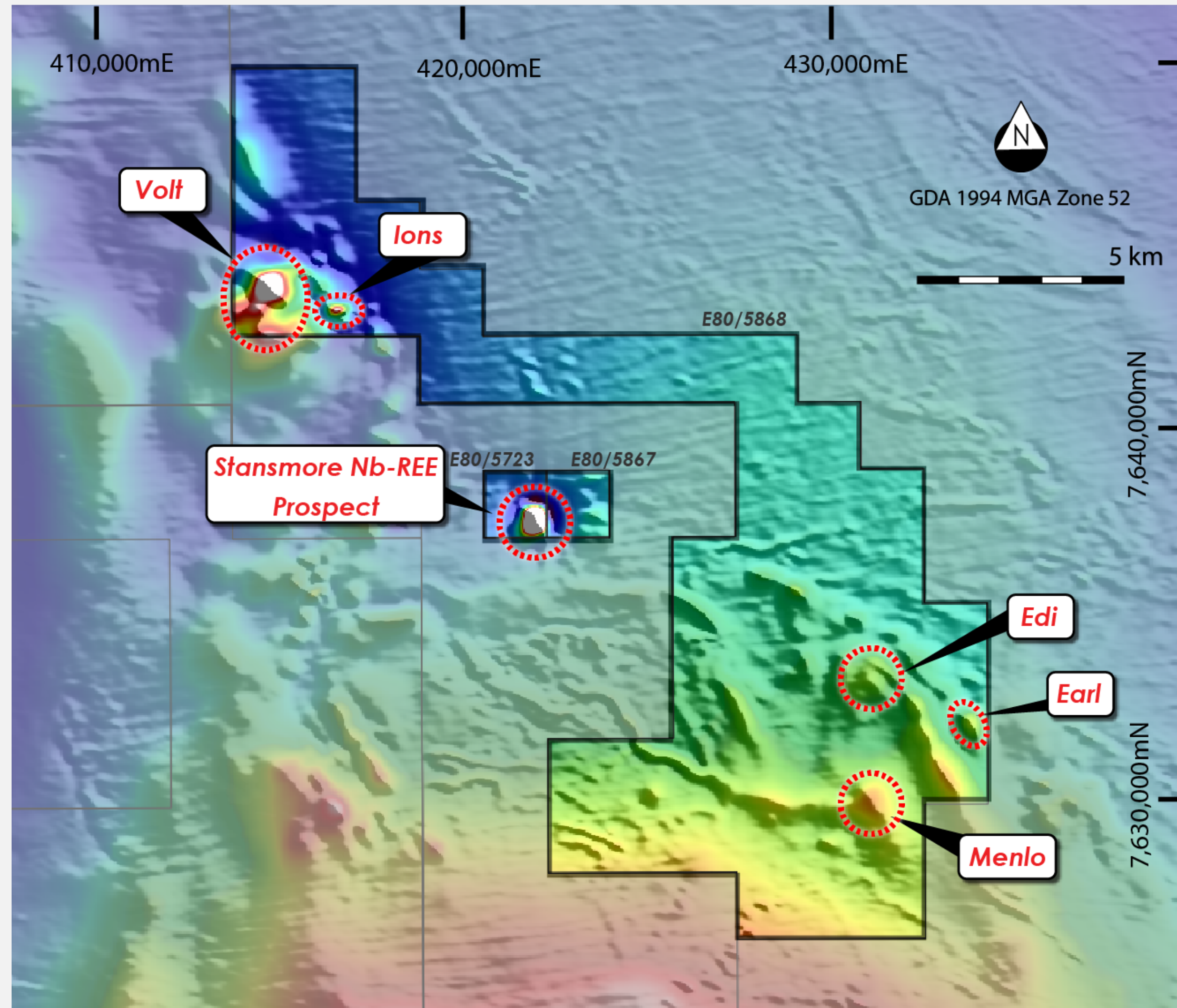


WEST ARUNTA

The West Arunta is one of the last frontiers for major discoveries in Australia

The identification of rare earth mineralisation associated with carbonatite intrusions by WA1 and ENR nearby in their first ever drill programs, signifies the extremely prospective and underexplored nature of the West Arunta

Southern Geoscience Consultants (SGC) re-processed magnetic data over the Stansmore Carbonatite Project highlights multiple new targets identified prospective for Niobium-REE mineralisation



WEST ARUNTA

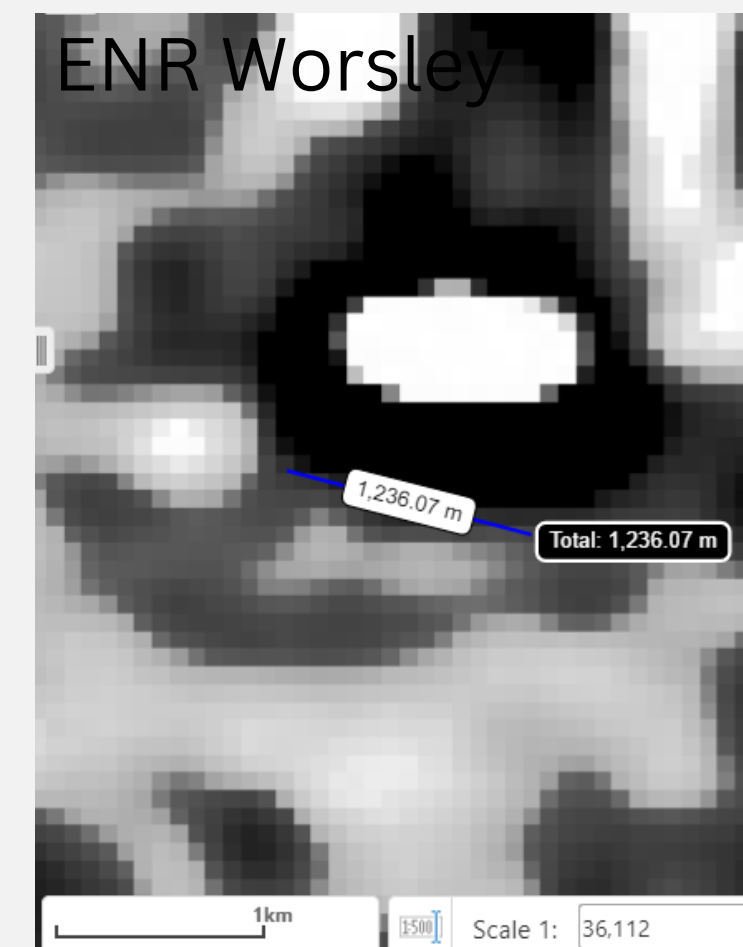
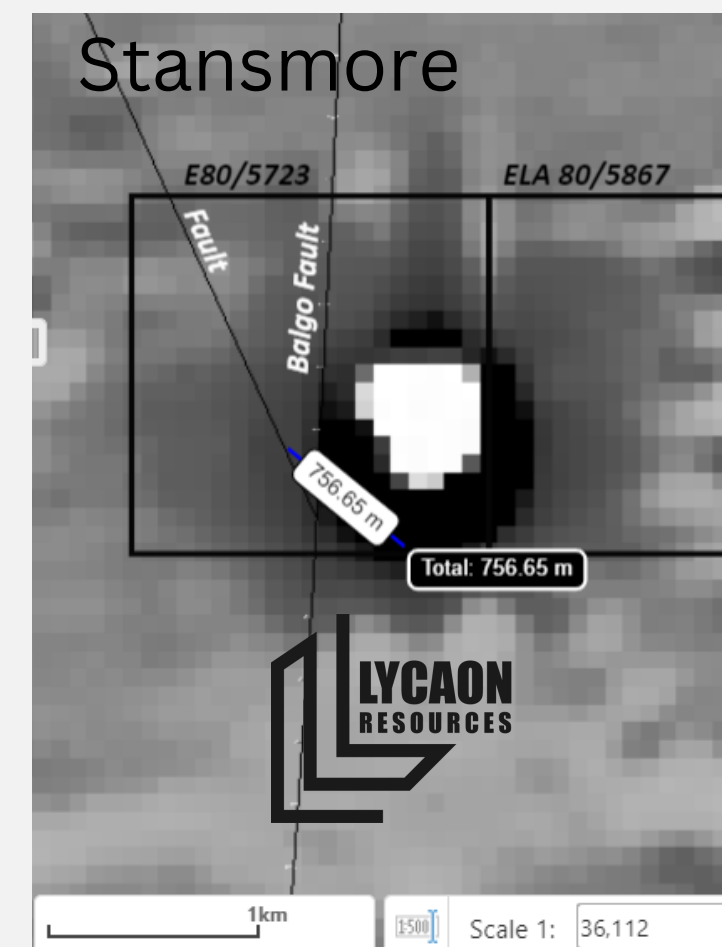
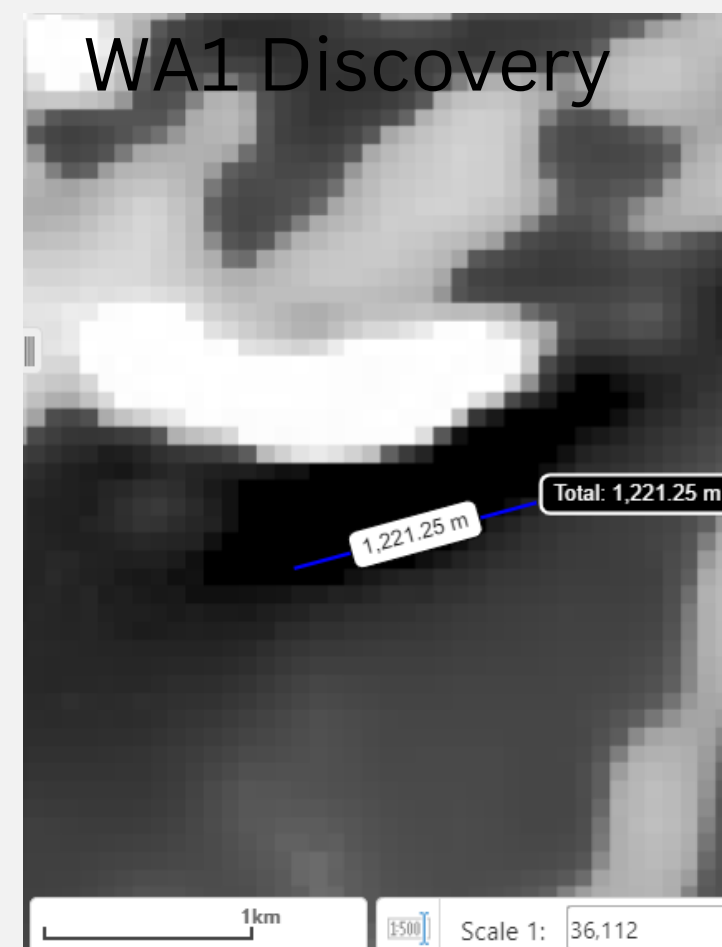
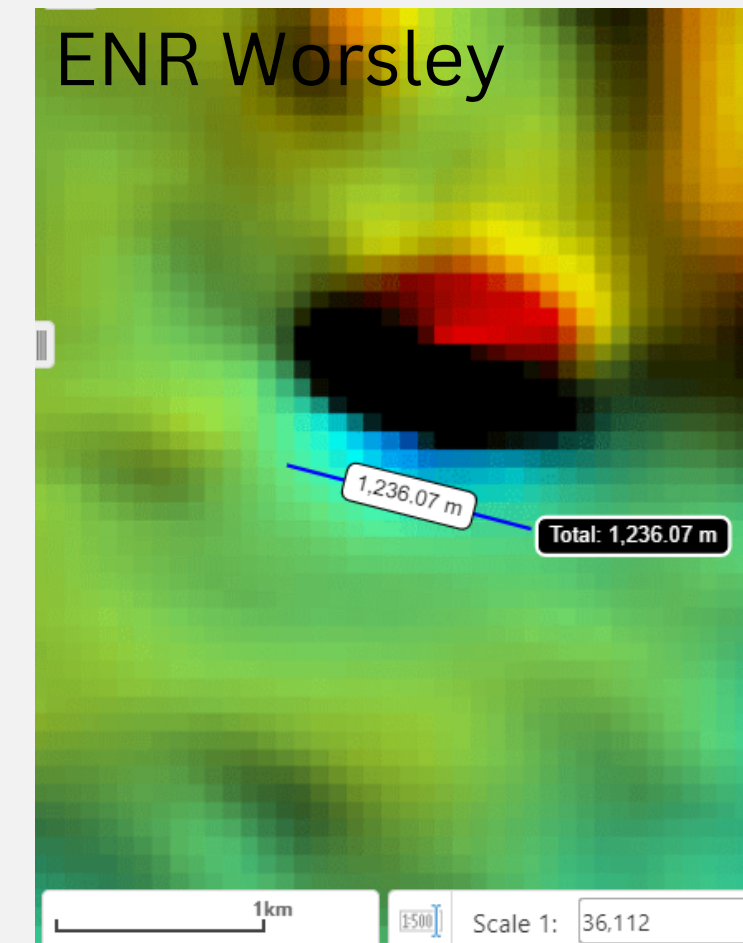
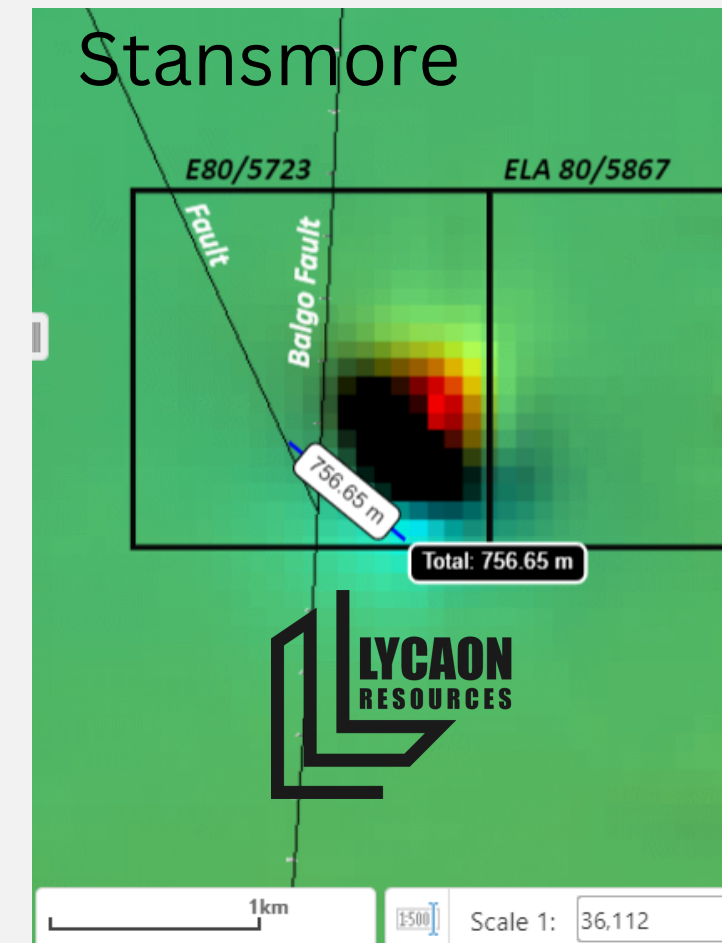
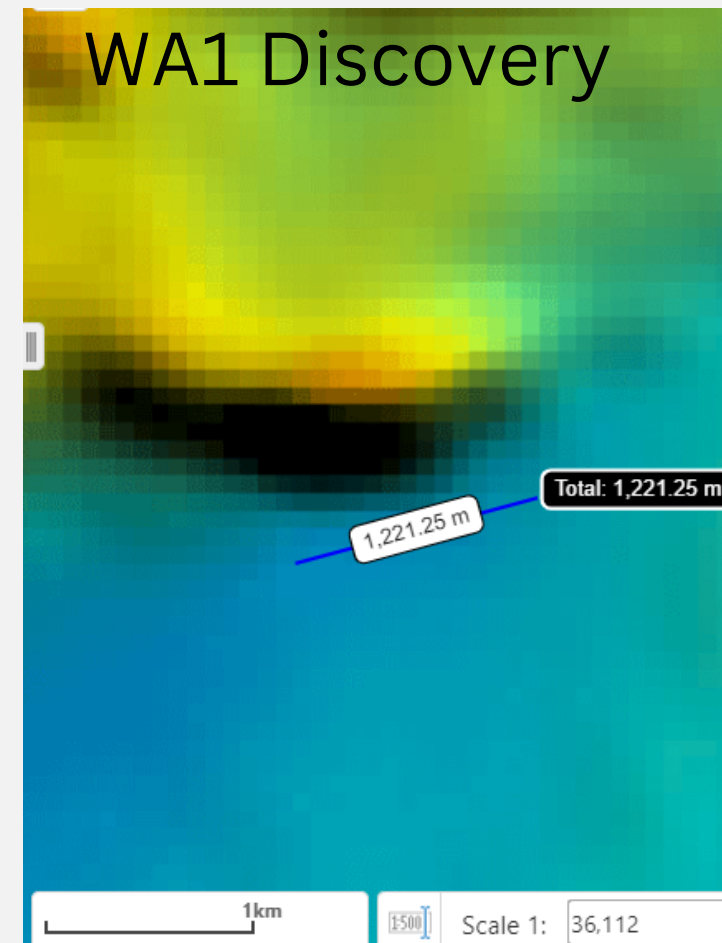
Both WA1 and ENR are **targeting discrete, coincident gravity-magnetic anomalies with ~1km strike**

WA1's discovery drill results include;

- **136m at 0.40% Nb₂O₅, 0.17% TREO, 3.90% P₂O₅ from 28m (Luni target - LURC002)¹**
- **142m at 0.31% Nb₂O₅, 0.17% TREO, 3.94% P₂O₅ from 74m to 216m (EOH) (P2 target - PARC003)²**
- **24m at 0.82% Nb₂O₅, 0.21% TREO, 6.44% P₂O₅ from 157m (Luni target - LURC001)¹**

¹ WA1 ASX release 16 November 2022

² WA1 ASX release 26 October 2022



NEWSFLOW

For personal use only

Diamond drilling at Bow River estimated to be completed mid September

Downhole electromagnetic surveys to be completed late September to define if conductors are present that may be related to massive sulphide nickel-copper mineralisation

West Arunta land access agreement meeting on-country at Balgo mid September

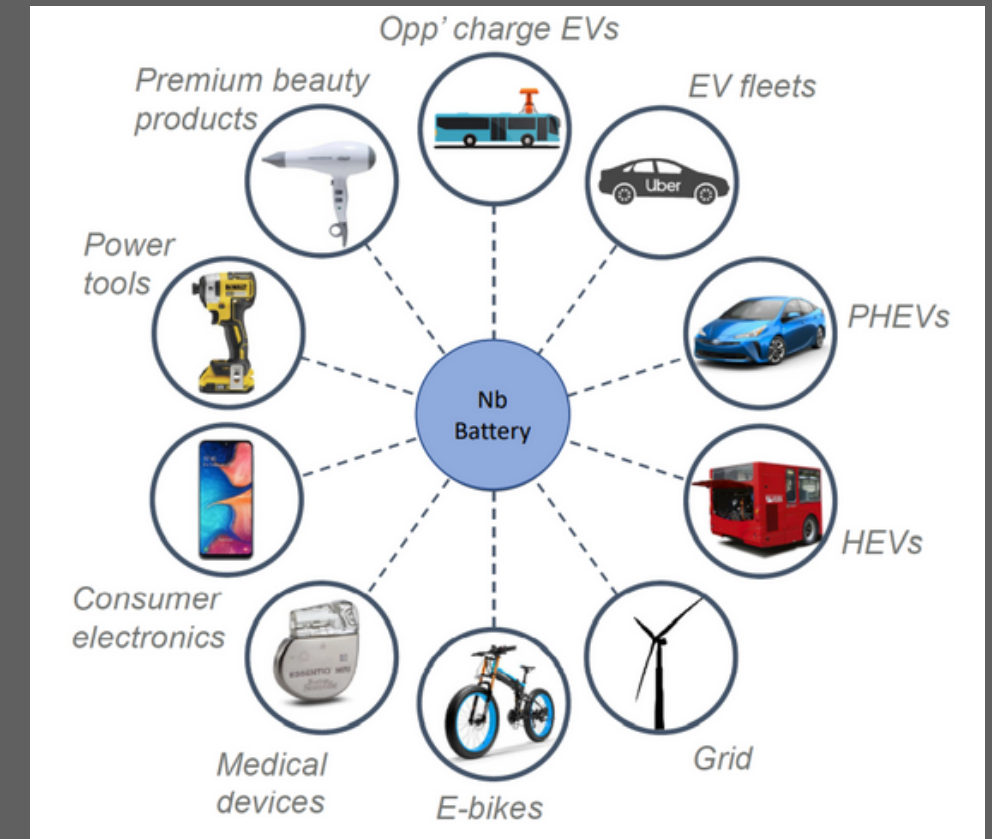
Bow River assays results from diamond core Q4 2023

West Arunta heritage surveys Q1 2024

West Arunta and Bow River drilling Q2 2024

Niobium (Nb) – a Battery Mineral

- **Niobium**-based batteries will revolutionize the battery market
- Super-fast charging and discharging rate (<6 minutes)
- Increased energy density of batteries
 - More power and increased range
 - Improves performance at low temperatures
 - More charging cycles (+20,000 cycles)
- Demand for niobium to increase 100% by 2030¹



Companies involved with Niobium Battery Technology

TOSHIBA

WILLIAMS | ADVANCED
ENGINEERING

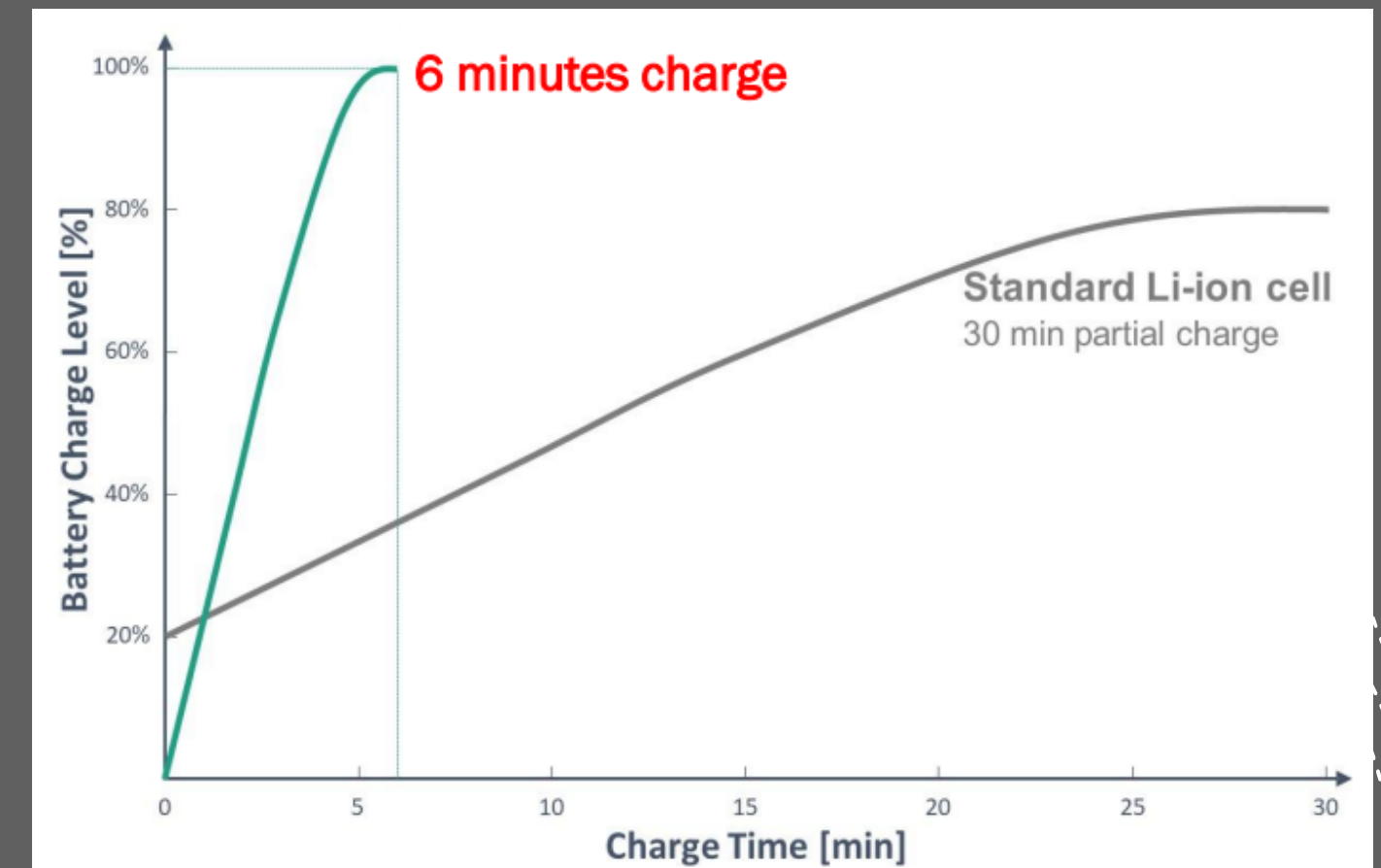
Echion
Technologies

nanoOne
.....

BATTERY STREAK
CHARGE LIGHTNING FAST

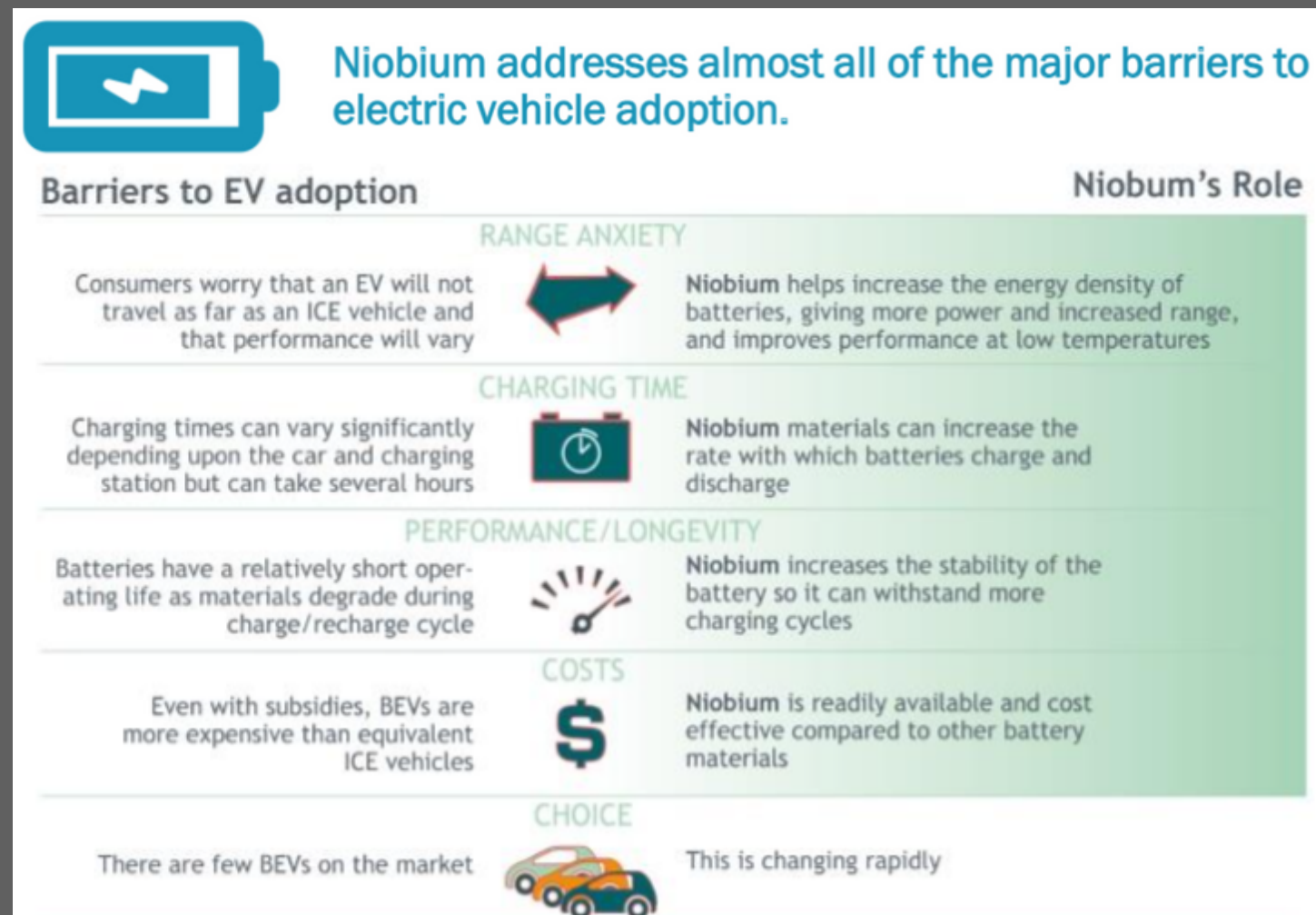
nyobolt

CBMM
INOVAR • RESPEITAR • COMPETIR

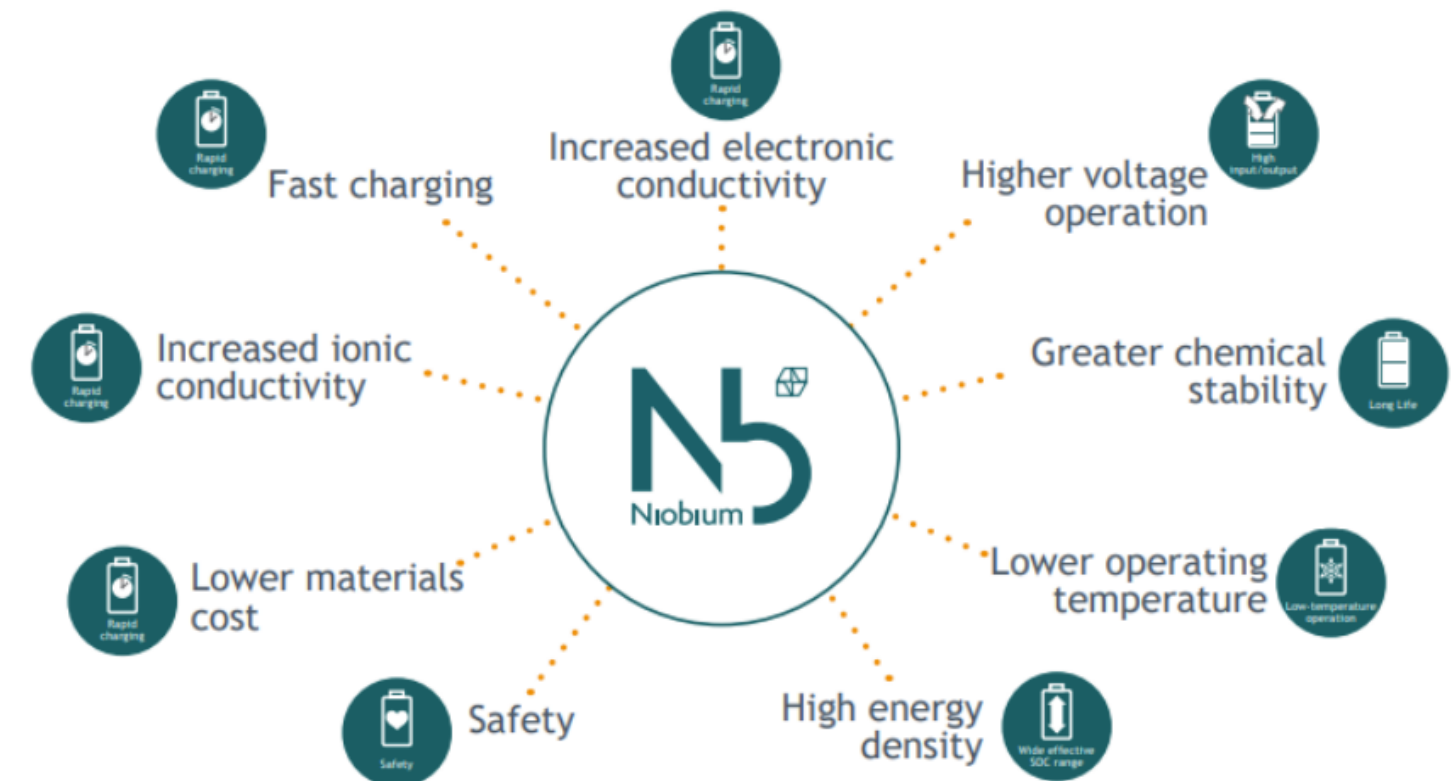


Niobium (Nb) – a Battery Mineral

- Niobium has been identified by the Australian Government and many other countries as a **critical mineral**
- Niobium is a metal with a **very high melting point**
- Ferroniobium (FeNb, 65% Nb) is **used in alloys** in small amounts (<1%) to make steel usage more efficient
- **Stronger, lighter, corrosion resistant and heat resistant**
- It is an **essential metal for advanced technology with additional uses in gas and wind turbines**
- Niobium **improves the performance of batteries** by improving chargeability and stability

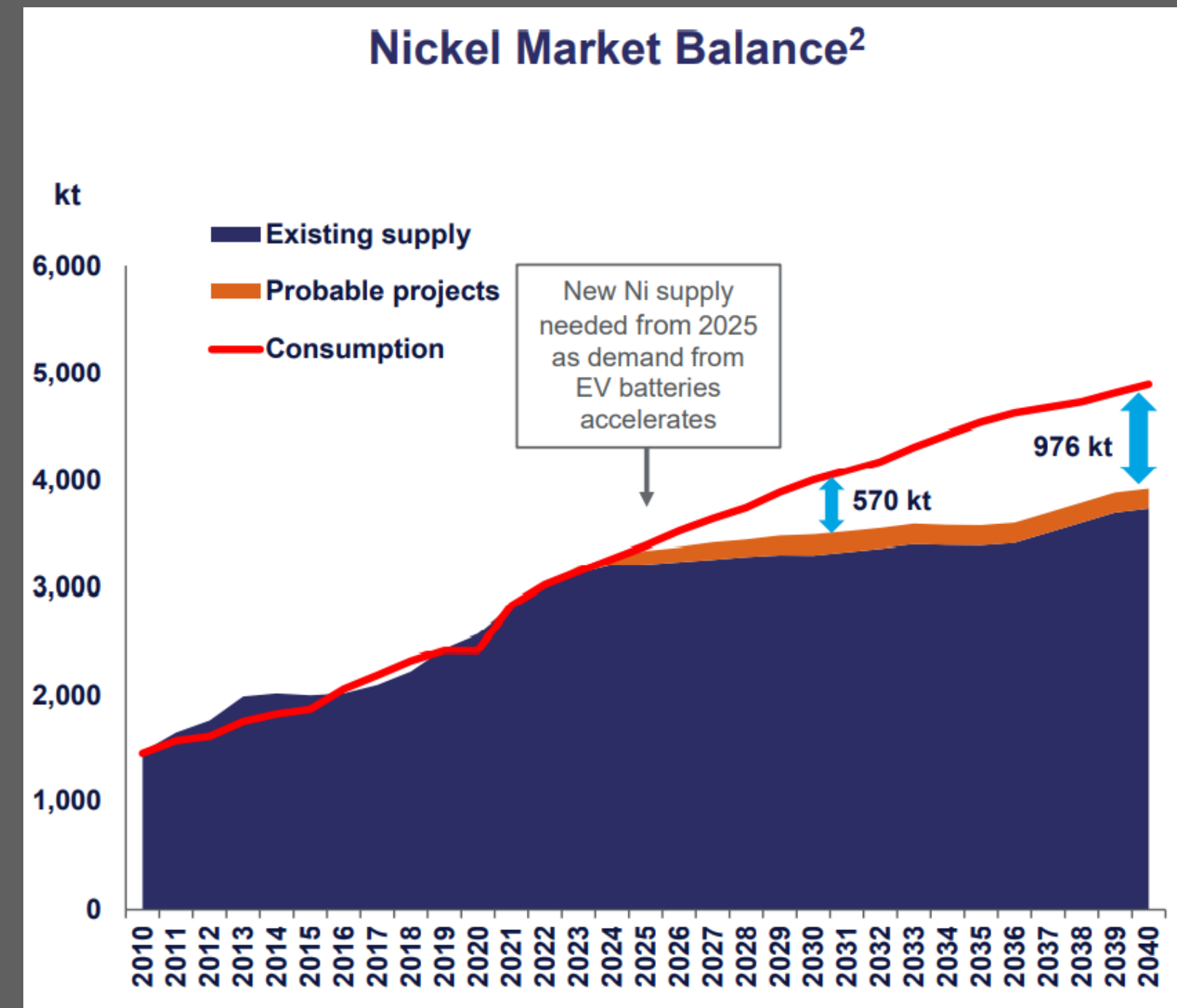
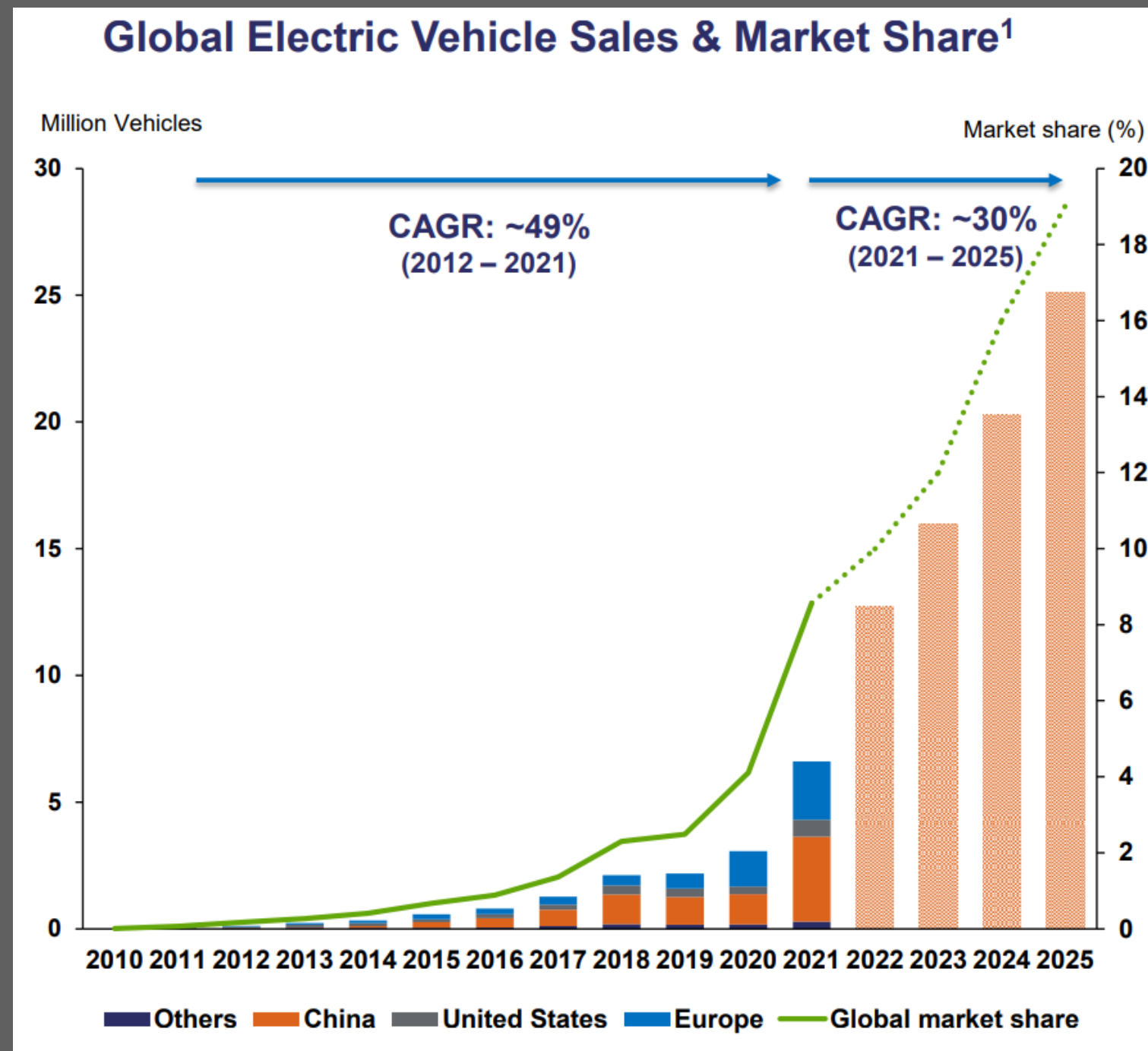


Niobium Benefits for Lithium Ion Batteries



Nickel Demand Growth

- EV makers are said to be desperately short on nickel in particular, with S&P Global predicting the battery sector to near 35% of total nickel demand by the end of the decade.



1. Source IEA (2022), Electric cars fend off supply challenges to more than double global sales, IEA, Paris <https://www.iea.org/commentaries/electric-cars-fend-off-supply-challenges-to-more-than-double-global-sales>, Bloomberg New Energy Finance 2021
2. Source: Wood Mackenzie Nickel Cost & Market Service Q4 2021 (Paydirt Conference)

CONTACT US

Thomas Langley
Technical Director

- ☎ +61 (08) 6188 8181
- ✉ admin@lycaonresources.com
- 🌐 www.lycaonresources.com
- 📍 Level 2, 22 Mounts Bay Road,
Perth WA 6000
- ✂ @Lycaon_ASX

