



Galena Mining Limited

EUROZ HARTLEYS INSTITUTIONAL CONFERENCE
Rottneest Island 2023
Thursday 9 March

Tony James
9 March, 2023

ersonal use only



Abra site concentrate stockpiles (Photo 28 February 2023)

"We acknowledge the Nharnuwangga Wajarri and Ngarlawangga peoples, past, present and emerging who are the Traditional Custodians of the land on which the Abra Project is located"



Disclaimer

Cautionary statement – Reference to FS and Updated Mine Plan. This report refers to the Abra Base Metals Mine (“Abra” or the “Project”) Feasibility Study (“FS”) (ASX: 22 July 2019) and Updated Mine Plan (ASX: 25 July 2022). A summary of the FS and Updated Mine Plan material assumptions was published by Galena Mining Limited (“Galena”) on the 22 July 2019 and 25 July 2022 respectively.

Environmental approvals, mining tenements and approvals, other governmental factors and infrastructure requirements for selected mining methods and for transportation of concentrate to market were all analysed in detail and determined not to pose any practical or economic restrictions to the selected mining and processing model. These aspects of the project have not materially changed from the FS to the Updated Mine Plan.

Other material assumptions in regards to metallurgy, mineralogy and geotechnical factors that were made in the previously announced FS have also not materially changed in the Updated Mine Plan and continue to apply. Mine designs, mining schedules and other mining related assumptions relating to the FS were based on the Abra Mineral Resource estimate dated December 2018. Mine designs, mining schedules and other mining related assumptions relating to the Updated Mine Plan were based on the Abra Mineral Resource estimate dated April 2021. Differences exist between the two separate Mineral Resource estimates which has been reflected in differences between the mining related activities and assumptions associated with the FS and the Updated Mine Plan.

All Financial assumptions used in the Updated Mine Plan have been updated to reflect market conditions and the timing of the Updated Mine Plan and will therefore potentially differ to those presented in the FS.

Process and engineering designs for Abra’s FS (July 2019) and Updated Mine Plan (July 2022) were developed to support capital and operating estimates to an accuracy of $\pm 10\%$. Key assumptions that the FS and Updated Mine Plan was based on (including those defined as Material Assumptions under ASX Listing Rule 5.9.1) are outlined in the ASX announcements of 22 July 2019 and 25 July 2022 respectively. Galena believes the production target, forecast financial information derived from that target and other forward-looking statements included in those announcements and this presentation are based on reasonable grounds.

A number of key steps need to be completed in order to bring Abra into production. Many of these steps are referred to in this announcement. Investors should note that if there are delays associated with completion of those steps, outcomes may not yield the expected results (including the timing and quantum of estimated revenues and cash flows).

The economic outcomes associated with the FS and the Updated Mine Plan are based on certain assumptions made for commodity prices, concentrate treatment and recovery charges, exchange rates and other economic variables, which are not within the Company’s control and subject to change from time to time. The assumptions made for each may be different in each case due to the different timing of the work and changing market conditions and economic factors. Changes in such assumptions may have a material impact on the economic outcomes (including the timing and quantum of estimated revenues and cash flows).

To develop the Project as per the assumptions set out in the FS and the Updated Mine Plan may require additional capital. Investors should note that any failure to procure the required additional capital may result in a delay, change in nature and scale, or even suspension of the Project.

Cautionary statement – Reference to FS Mine Model and Updated Mine Plan Mineralised Material. The mineralised material scheduled to be mined and processed in the FS (“FS Mine Model”) includes a mix of material taken from Probable Ore Reserves (67%) and Inferred Mineral Resources (33%). The mineralised material scheduled to be mined and processed in the Updated Mine Plan includes a mix of Indicated Mineral Resources (66%) and Inferred Mineral Resources (34%). In both cases no reduction factor has been applied to the tonnes and grades of the Inferred Mineral Resources. Inferred Mineral Resources have a lower level of geological confidence and can’t be included in the calculation of Ore Reserves, and there can be no guarantee that a Mineral Resource estimate update will convert Inferred Mineral Resources to Indicated Mineral Resources or return the same grade and tonnage estimation. This may affect mining performance and outcomes (including economic) from those outlined in the FS and the Updated Mine Plan. The Abra Mineral Resource and Ore Reserve will be revised systematically as the project continues considering depletion, new resource definition and mining activities.

Based on the current geological information, Galena believes it has a strong basis for inclusion of certain Inferred Mineral Resource material in both the FS Mine Model and the Updated Mine Plan, at this time whilst remaining within suitable evaluation level tolerances. To further test its basis, Galena ran the financial model on a check scenario assuming a zero grade for any Inferred Mineral Resource material in the FS Mine Model and the Updated Mine Plan, that produced a substantial positive NPV outcome in both cases.

Forward looking statements - The contents of this presentation reflect various technical and economic conditions at the time of writing. Given the nature of the resources industry, these conditions can change significantly over relatively short periods of time. Consequently, actual results may vary from those in this presentation.

Some statements in this presentation regarding estimates or future events are forward-looking statements. They include indications of, and guidance on, future earnings, cash flow, costs and financial performance. Forward-looking statements include, but are not limited to, statements preceded by words such as “planned”, “expected”, “projected”, “estimated”, “may”, “Scheduled”, “intends”, “anticipates”, “believes”, “potential”, “predict”, “foresee”, “proposed”, “aim”, “target”, “opportunity”, “could”, “nominal”, “conceptual” and similar expressions.



Disclaimer (continued)

Forward looking statements (continued) - Forward-looking statements, opinions and estimates included in this presentation are based on assumptions and contingencies which are subject to change without notice, as are statements about market and industry trends, which are based on interpretations of current market conditions. Forward-looking statements are provided as a general guide only and should not be relied on as guarantee of future performance. Forward-looking statement may be affected by a range of variables that could cause actual results to differ from estimated results and may cause the Company's actual performance and financial results in future periods to materially differ from any projections of future performance or results expressed or implied by such forward-looking statements. So there can be no assurance that actual outcomes will not materially differ from these forward-looking statements.

Competent Person's statement - The information in this report related to the Abra Ore Reserve is based on work completed by Mr Roger Bryant, BEng (Mining, Member AUSIMM). Mr Bryant was an employee of Galena Mining Ltd at the time the Ore Reserve was prepared. Mr Bryant has sufficient experience relevant to the style of mineralisation and type of deposit under consideration and to the activity which he is undertaking to qualify as a Competent Person as defined in the 2012 Edition of the Australasian Code for Reporting of Exploration Results, Exploration Targets, Mineral Resources and Ore Reserves. Mr Bryant consents to the inclusion in the report of the matters based on this information in the form and context in which it appears.

The information in this report related to the Abra April 2021 Resource and underpinning the production target is based on work completed by Mr Angelo Scopel BSc (Geol), MAIG, a fulltime employee of Galena Mining and Mr Mark Drabble B.App.Sci. (Geology), MAIG, MAusIMM, Principal Consultant at Optiro Pty Ltd. Mr Scopel was responsible for data review and QAQC, and. Mr Drabble was responsible for the development of the geological model, resource estimation, classification and reporting. Mr Scopel and Mr Drabble have sufficient experience relevant to the style of mineralisation and type of deposit under consideration and to the activity which they are undertaking to qualify as a Competent Person as defined in the 2012 Edition of the Australasian Code for Reporting of Exploration Results, Exploration Targets, Mineral Resources and Ore Reserves. Mr Scopel and Mr Drabble consent to the inclusion in the report of the matters based on this information in the form and context in which it appears.

The information in this report to which this statement is attached that relates to exploration results and drilling data is based upon information compiled by Mr Angelo Scopel BSc (Geol), MAIG, a fulltime employee of Galena Mining. Mr Scopel has sufficient experience relevant to the style of mineralisation and type of deposit under consideration and to the activity which they are undertaking to qualify as a Competent Person as defined in the 2012 Edition of the Australasian Code for Reporting of Exploration Results, Exploration Targets, Mineral Resources and Ore Reserves. Mr Scopel consents to the inclusion in the report of the matters based on this information in the form and context in which it appears.

Not an offer - This presentation is for information purposes only. The presentation does not comprise a prospectus, product disclosure statement or other offering document under Australian law or any other law. This presentation does not constitute or form part of any invitation, offer for sale or subscription or any solicitation for any offer to buy or subscribe for any securities in Galena Mining Limited.

No liability - Galena Mining Limited has prepared this document based on information available to its at the time of preparation. No representation or warranty, express or implied, is made as to the fairness, accuracy or completeness of the information, opinions and conclusions contained in this presentation. To the maximum extent permitted by law, Galena Mining Limited, its related bodies corporate and the officers, directors, employees, advisers and agents of those entities do not accept any responsibility or liability for any loss arising from the use of the presentation or its contents or otherwise arising in connection with it.

Copyright notice - This presentation is protected by Australian and International copyright laws. Reproduction and distribution of the presentation or its contents (including but not limited to any charts, maps, diagrams, graphics, photos and text) without the written permission of Galena Mining Limited is prohibited.

© 2022 Galena Mining Limited.



From construction into production (commissioning & ramp up)

- 17 Nov 22, Abra construction 92% complete – first ore underground
- 13 Dec 22, Abra construction at 97% complete – first ore stockpiled
- 10 Jan 23, Abra construction complete – first ore feed to plant
- 13 Jan 23, First concentrate produced at Abra
- 9 Feb 23, Drilling hits northern extension of Abra mineralisation
- End of Feb YTD, Plant has processed 88kt during commissioning (LG) producing 3,584t⁽¹⁾ concentrate
On track for first shipment in Q1
- 542m⁽¹⁾, underground development record in Feb. 25+ ore headings established. Stope 1 drilling well advanced (75% complete). Grade Control drilling & block modelling complete for initial 0.8Mt @ 7.6%Pb & 27 g/t Ag ⁽²⁾



Figure 1: Abra mine site (Photo 20 January 2023)



First ore underground

- 17 Nov 22, Abra construction 92% complete – first ore underground
- 13 Dec 22, Abra construction at 97% complete – first ore stockpiled
- 10 Jan 23, Abra construction complete – first ore feed to plant
- 13 Jan 23, First concentrate produced at Abra
- 9 Feb 23, Drilling hits northern extension of Abra mineralisation
- End of Feb YTD, Plant has processed 88kt during commissioning (LG) producing 3,584t⁽¹⁾ concentrate
On track for first shipment in Q1
- 542m⁽¹⁾, underground development record in Feb. 25+ ore headings established. Stope 1 drilling well advanced (75% complete). Grade Control drilling & block modelling complete for initial 0.8Mt @ 7.6%Pb & 27 g/t Ag ⁽²⁾



Figure 2: Ore face underground in 1300mRL access drive (Photo 13 November)



First ore stockpiled

- 17 Nov 22, Abra construction 92% complete – first ore underground
- 13 Dec 22, Abra construction at 97% complete – first ore stockpiled
- 10 Jan 23, Abra construction complete – first ore feed to plant
- 13 Jan 23, First concentrate produced at Abra
- 9 Feb 23, Drilling hits northern extension of Abra mineralisation
- End of Feb YTD, Plant has processed 88kt during commissioning (LG) producing 3,584t⁽¹⁾ concentrate
On track for first shipment in Q1
- 542m⁽¹⁾, underground development record in Feb. 25+ ore headings established. Stope 1 drilling well advanced (75% complete). Grade Control drilling & block modelling complete for initial 0.8Mt @ 7.6%Pb & 27 g/t Ag ⁽²⁾



Figure 3: First material being tipped into crusher during commissioning (Photo 26 November)



First ore processed

- 17 Nov 22, Abra construction 92% complete – first ore underground
- 13 Dec 22, Abra construction at 97% complete – first ore stockpiled
- 10 Jan 23, Abra construction complete – first ore feed to plant
- 13 Jan 23, First concentrate produced at Abra
- 9 Feb 23, Drilling hits northern extension of Abra mineralisation
- End of Feb YTD, Plant has processed 88kt during commissioning (LG) producing 3,584t⁽¹⁾ concentrate
On track for first shipment in Q1
- 542m⁽¹⁾, underground development record in Feb. 25+ ore headings established. Stope 1 drilling well advanced (75% complete). Grade Control drilling & block modelling complete for initial 0.8Mt @ 7.6%Pb & 27 g/t Ag ⁽²⁾



Figure 4: First ore being fed into mill at Abra (Photo dated 9 January 2023)



First concentrate production

- 17 Nov 22, Abra construction 92% complete – first ore underground
- 13 Dec 22, Abra construction at 97% complete – first ore stockpiled
- 10 Jan 23, Abra construction complete – first ore feed to plant
- **13 Jan 23, First concentrate produced at Abra**
- 9 Feb 23, Drilling hits northern extension of Abra mineralisation
- End of Feb YTD, Plant has processed 88kt during commissioning (LG) producing 3,584t⁽¹⁾ concentrate
On track for first shipment in Q1
- 542m⁽¹⁾, underground development record in Feb. 25+ ore headings established. Stope 1 drilling well advanced (75% complete). Grade Control drilling & block modelling complete for initial 0.8Mt @ 7.6%Pb & 27 g/t Ag ⁽²⁾



Figures 5 & 6: First concentrate production in Abra's concentrate shed and Lead-silver concentrate in Abra's flotation circuit (Photos 12 Jan 2023)



Mineralisation north of Abra fault

- 17 Nov 22, Abra construction 92% complete – first ore underground
- 13 Dec 22, Abra construction at 97% complete – first ore stockpiled
- 10 Jan 23, Abra construction complete – first ore feed to plant
- 13 Jan 23, First concentrate produced at Abra
- 9 Feb 23, Drilling hits northern extension of Abra mineralisation
- End of Feb YTD, Plant has processed 88kt during commissioning (LG) producing 3,584t⁽¹⁾ concentrate On track for first shipment in Q1
- 542m⁽¹⁾, underground development record in Feb. 25+ ore headings established. Stope 1 drilling well advanced (75% complete). Grade Control drilling & block modelling complete for initial 0.8Mt @ 7.6%Pb & 27 g/t Ag ⁽²⁾

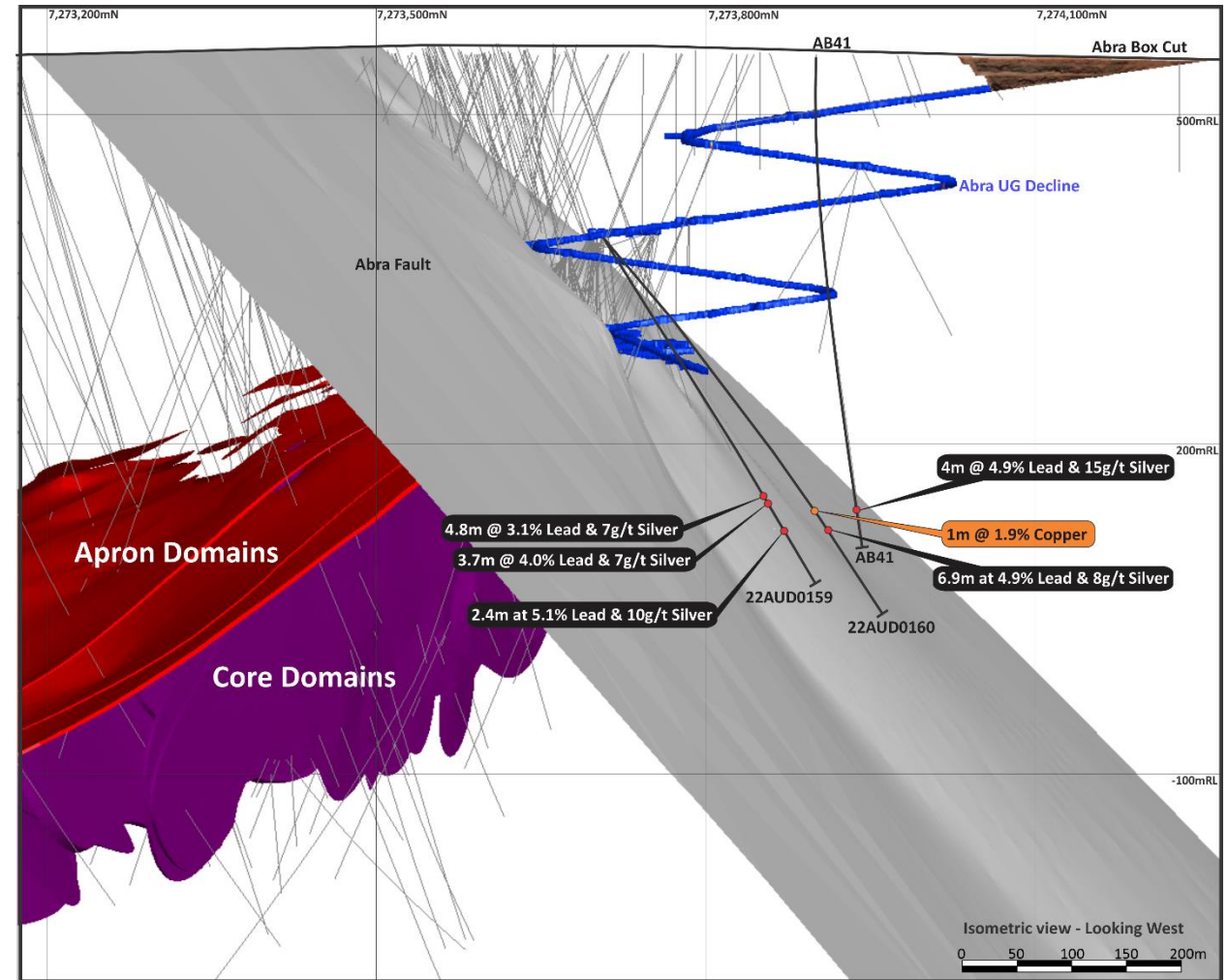


Figure 7: Isometric view showing holes drilled north of Abra fault confirming mineralisation fault offset of 70-100m and being 100m from planned infrastructure and the 3 holes are spread over an area of 300m (east-west) and 100m (north-south). Positive confirmation of down hole electromagnetic survey information.



On track for first concentrate shipment

- 17 Nov 22, Abra construction 92% complete – first ore underground
- 13 Dec 22, Abra construction at 97% complete – first ore stockpiled
- 10 Jan 23, Abra construction complete – first ore feed to plant
- 13 Jan 23, First concentrate produced at Abra
- 9 Feb 23, Drilling hits northern extension of Abra mineralisation
- **End of Feb YTD, Plant has processed 88kt during commissioning (LG) producing 3,584t⁽¹⁾ concentrate**
On track for first shipment in Q1
- 542m⁽¹⁾, underground development record in Feb. 25+ ore headings established. Stope 1 drilling well advanced (75% complete). Grade Control drilling & block modelling complete for initial 0.8Mt @ 7.6%Pb & 27 g/t Ag ⁽²⁾



Figures 8, 9 & 10: Abra processing plant, concentrate containers and flotation cell



Mining set to deliver

- 17 Nov 22, Abra construction 92% complete – first ore underground
- 13 Dec 22, Abra construction at 97% complete – first ore stockpiled
- 10 Jan 23, Abra construction complete – first ore feed to plant
- 13 Jan 23, First concentrate produced at Abra
- 9 Feb 23, Drilling hits northern extension of Abra mineralisation
- End of Feb YTD, Plant has processed 88kt during commissioning (LG) producing 3,584t⁽¹⁾ concentrate
On track for first shipment in Q1
- 542m⁽¹⁾, underground development record in Feb. 25+ ore headings established. Stope 1 drilling well advanced (75% complete). Grade Control drilling & block modelling complete for initial 0.8Mt @ 7.6%Pb & 27 g/t Ag ⁽²⁾



Figure 11, 12, 13 & 14: Abra underground development, stope drilling and paste plant



Mine plan & production guidance¹

Initial Mine Life

13 Years

Lead Grade Mined

7.6%

Silver Grade Mined

16.6 g/t

Mill Throughput

0.8-1.0 Mtpa

CY2023

1.3 Mtpa

Annual Steady State

Lead Metal Production

53-68 ktpa

CY2023

93 ktpa

Annual Steady State

Silver Metal Production

325-425 kozpa

CY2023

553 kozpa

Annual Steady State

C1 Direct Cash Cost²

US\$0.50-0.65/lb

CY2023

US\$0.50/lb

Annual Steady State

EBITDA³

A\$45-55M

CY2023

A\$100M

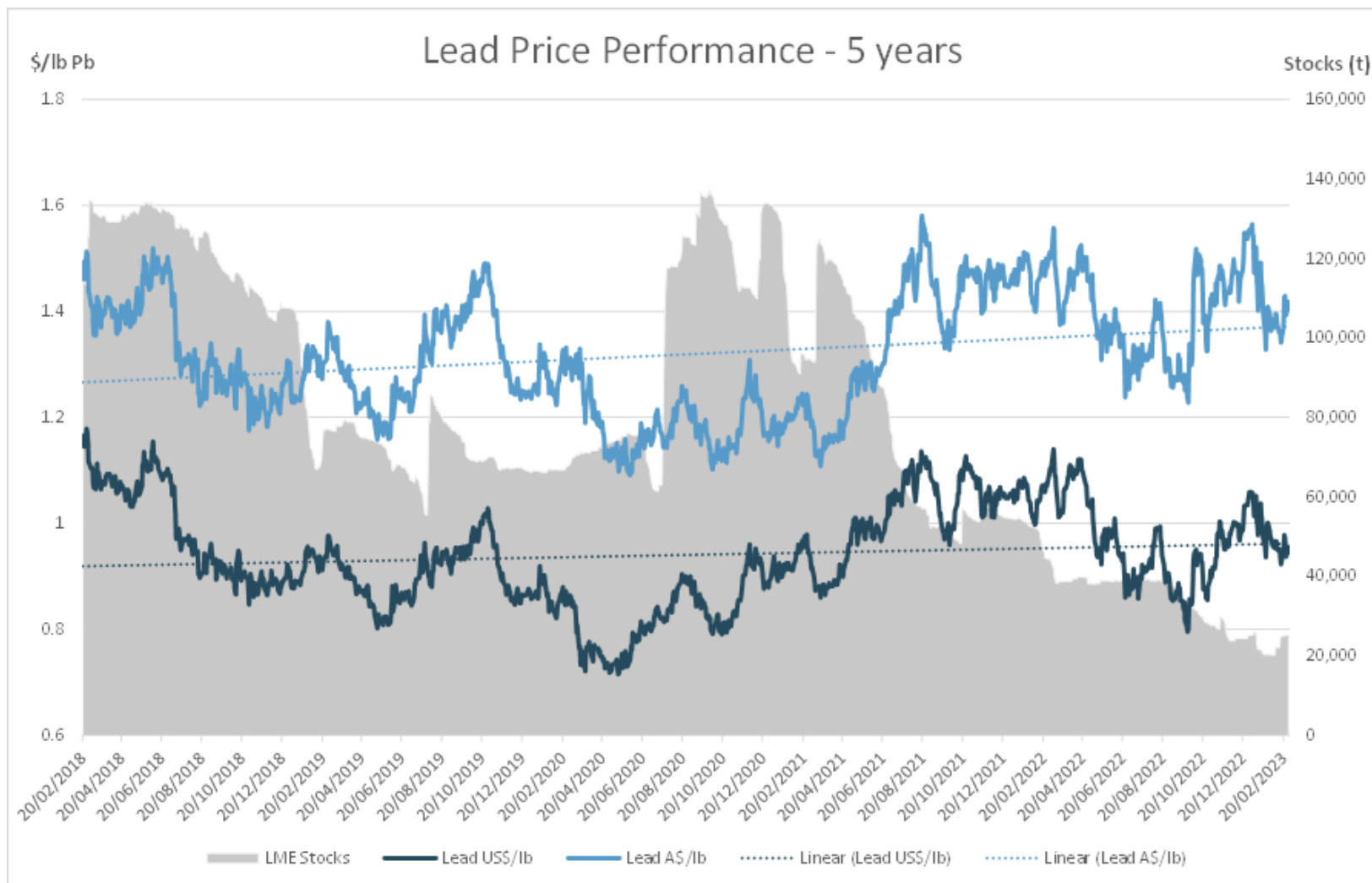
Annual Steady State

Notes

1. See Galena ASX announcement of 25 July 2022 (Re-Release: Abra Initial Production Guidance)
2. Includes a by-product credit for net silver revenue of US\$0.04/lb (A\$0.06/lb).
3. Assumes a lead metal price of US\$0.90/lb and AUD:USD exchange rate of 0.68



A\$ Lead price



Notes: Lead data source - Euroz Hartleys

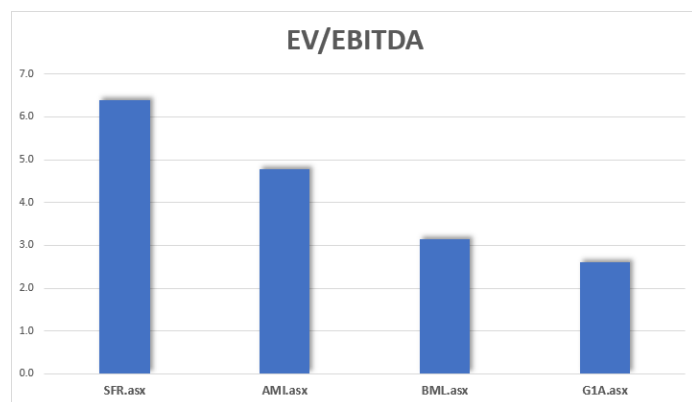


Galena Mining Limited

CAPITAL STRUCTURE At 28 February 2023

Shares on issue	619M
Options/rights ^{1,2,3}	20M
Share price (A\$)	23.0c
Market capitalisation (A\$)	142M
Cash (A\$) ⁴	35M
Debt (A\$) - US\$110M Taurus debt fully drawn ⁵	164M
Enterprise Value (A\$) (Market Capitalisation + Net Debt)	271M

Notes: **(1)** Options on issue pursuant to Placement in 2019 comprised 1.25M having an exercise price of \$0.50 and expiry date of 26 March 2023, 1.25M having an exercise price \$0.60 and expiry date of 26 March 2023, 1.25M having an exercise price of \$0.50 and expiry date of 17 April 2023 and 1.25M having an exercise price of \$0.60 and expiry date of 17 April 2023. **(2)** 13.2M contingent performance rights for Directors & Executives. **(3)** 2.2M employee share appreciation rights. **(4)** Includes undrawn AMPL Reserve Facility balance of A\$30M **(5)** Converted using AUD:USD FX rate of 1.00:0.67.



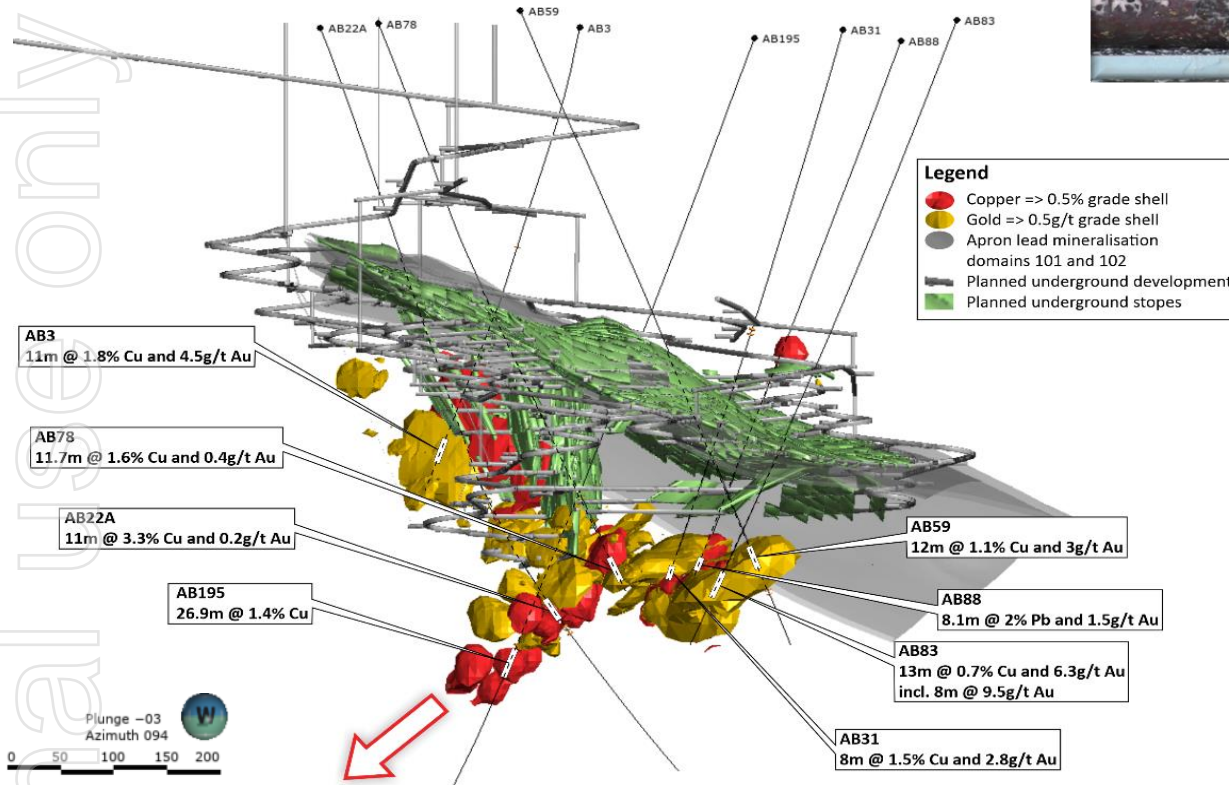
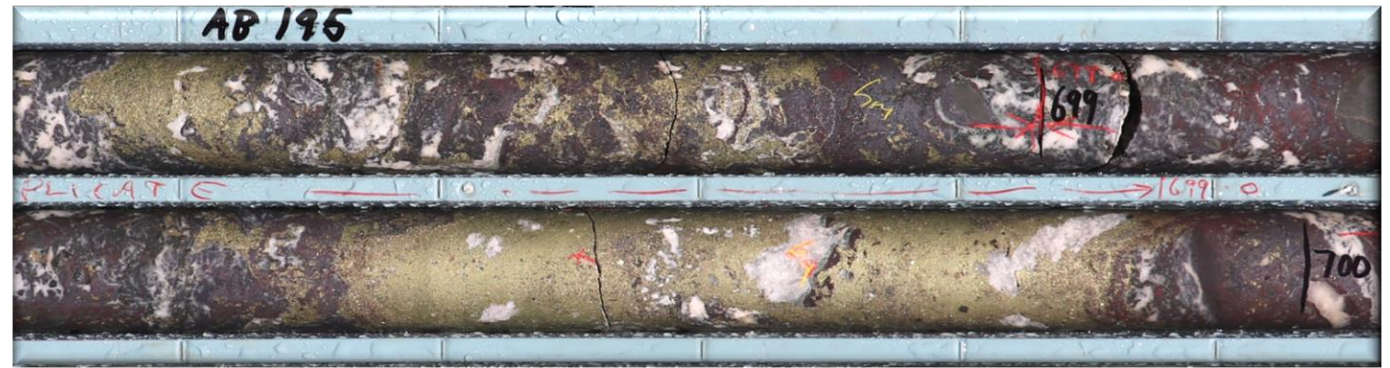
Notes: G1A trading less than 3x multiple when compared to some other Australian Base Metals. Source Euroz Hartleys

ASX: G1A Share Price History





Copper - Gold



First ever hole specifically targeting copper and gold, (AB195) provided assay results in February 2021 delivering multiple copper and gold intersections

- Significant intersection showing massive and disseminated chalcopyrite between 360m to 795m down-hole
 - 3.0m @ 4.2g/t gold and 1.1% copper from 671m
 - 1.7m @ 6.9% copper from 698m
 - 8.9m @ 2.3% copper from 773m
 - 26.9m @ 1.4% copper from 764m, including 0.8m at 8.5% copper from 773m
- Down-hole EM survey of AB195 (August 2021) completed identifying several targets for drill testing to be done from underground drill platforms

Notes

- See Galena ASX announcement of 22 February 2021 (first Targeted Copper-Gold Hole at Abra Hits 26.9m @ 1.4% Copper)

ersonal use only



Thankyou
www.galenamining.com.au

Galena Mining Limited





Galena Mining Limited

EUROZ HARTLEYS Presentation – Additional Slides If Required



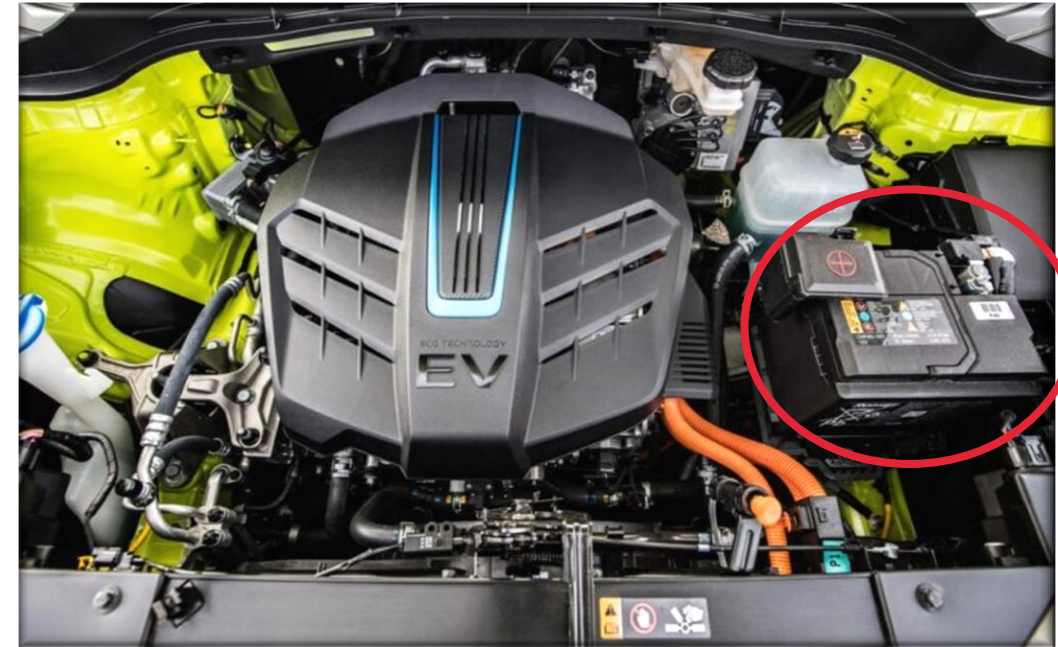


Lead Demand

1. In 2021 the global lead consumption for refined lead was 13.1Mtpa¹
2. Global lead demand forecast to grow by 2.0% pa over the long-term period to 2040 (driven by developing countries)¹
3. 87% of refined lead is used in batteries, 65% are automotive batteries with 50% being replacement and 15% new
4. ~400 million lead-acid batteries produced each year supplying 1.4 billion vehicles worldwide (1 for every 7 humans)
5. Every vehicle, including the large majority of EV's require 12V lead-acid batteries for key safety and control functions (cheap & reliable)
6. Start-stop technology and Hybrid options are increasing market penetration (Hybrids deliver 70% less emissions for 30% less cost)
7. Increasing demand for large Battery Energy Storage Systems (BESS) associated with solar & wind energy generation and high tariff grid exposure

Notes: 1. Global Lead Strategic Planning Outlook – Q1 2022 (Wood Mackenzie)

12V lead-acid battery in a Kia Soul EV



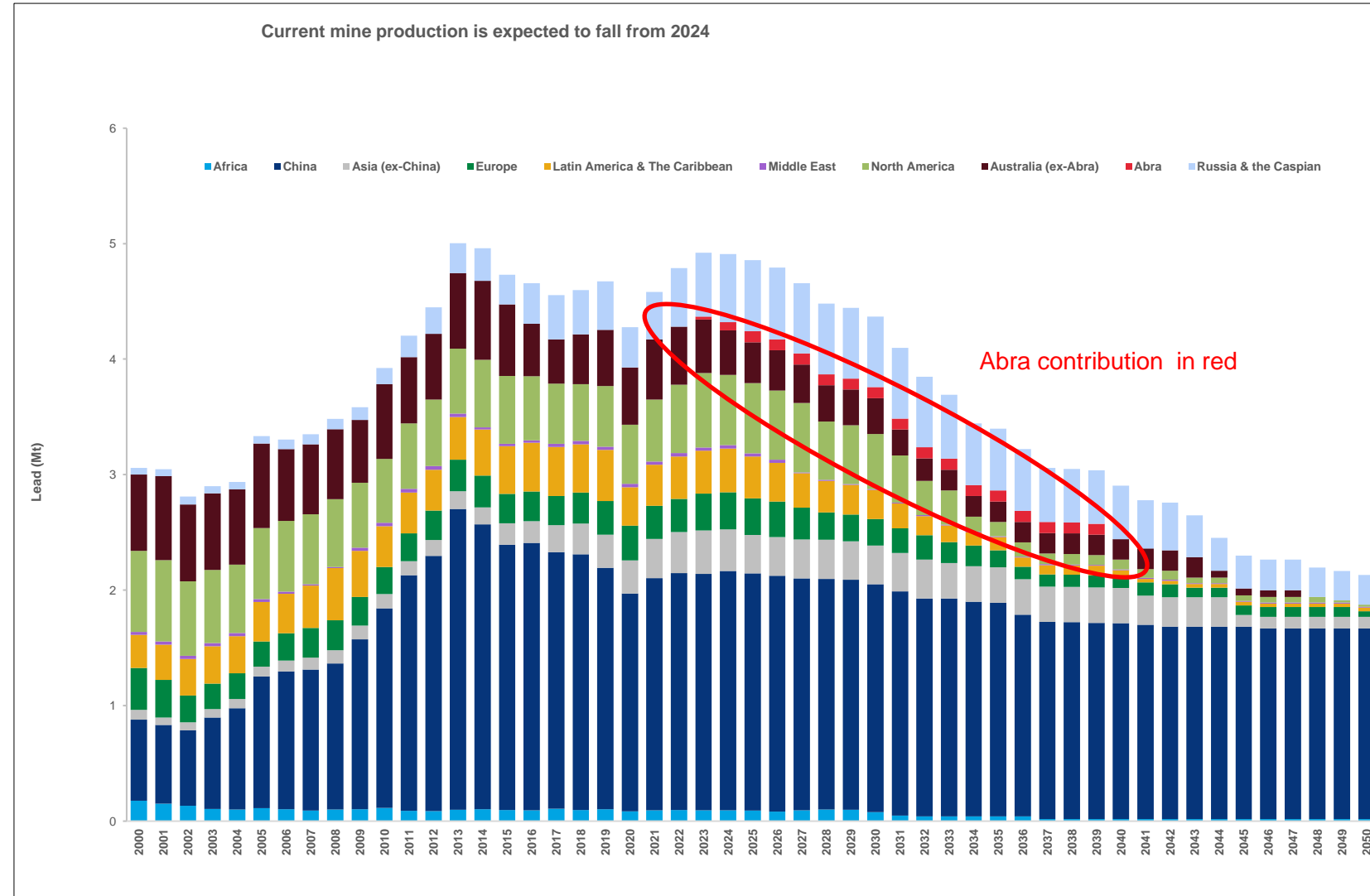
Galena strongly supports the ongoing elimination of lead-bearing petrol fumes and lead based paint



Lead supply

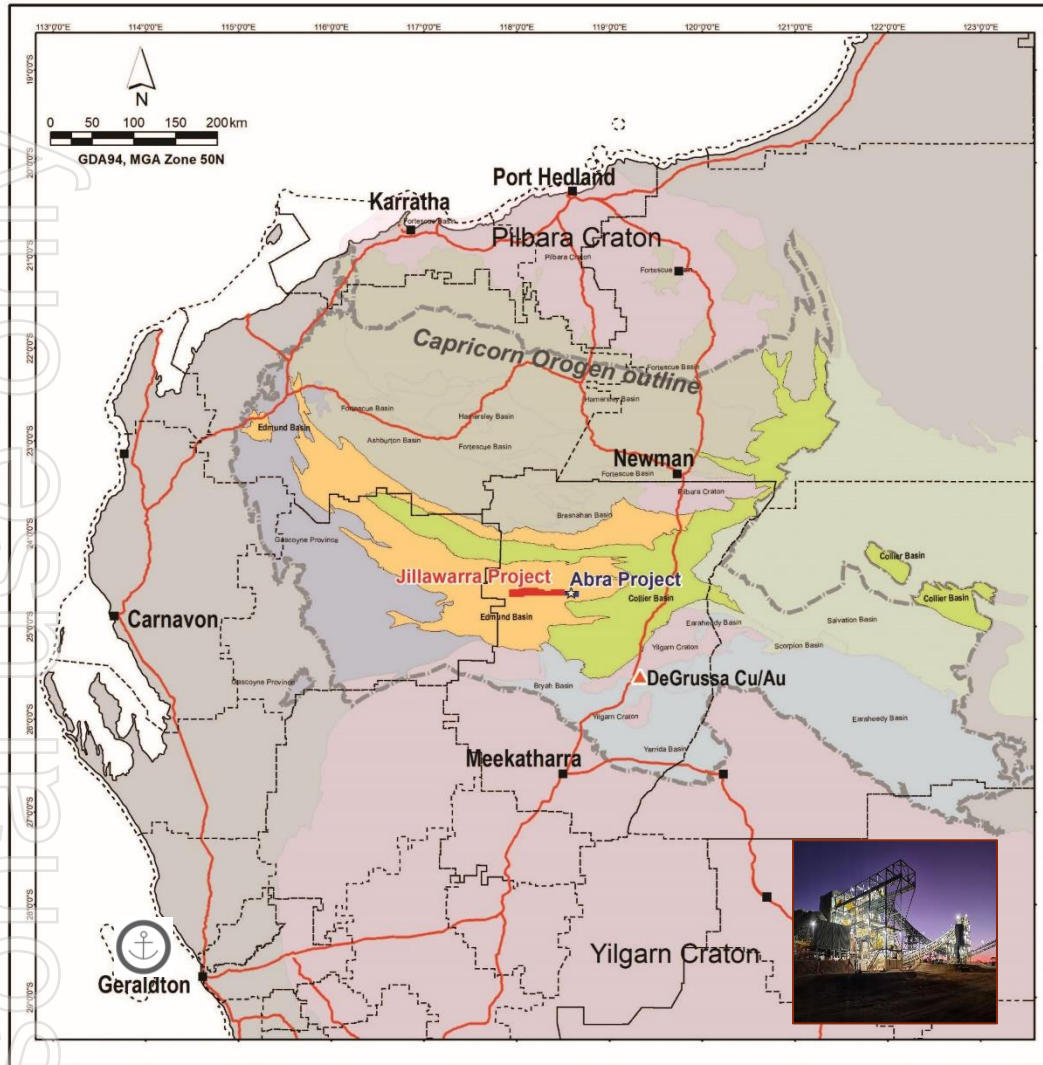
1. Global mined lead production is forecast to supply a modest increase from 4.6Mtpa to 4.8Mtpa by 2026 (Including Abra). Reserve depletion and the lack of new mines is generating a deficit outlook beyond 2024¹
2. Galena is very supportive of increasing lead recycling (currently over 55% worldwide)
3. European smelters under pressure due to surging power prices (Glencore reviews lead operations at Italian plant, Portovesme²)

Notes: 1. Global Lead Strategic Planning Outlook – Q1 2022 (Wood Mackenzie)
2. Reuters September 29, 2022





Building a new mine in a new mineral province in WA



- The Abra mine is located within Edmund sedimentary basin in the Gascoyne region of WA
- Granted Lease's with all major permits and native title arrangements in place. Construction nearing completion
- High-grade lead-silver concentrate will be trucked to Port of Geraldton in sealed half-height containers, on existing roads
- Port of Geraldton capacity & access contract in place. Port has all permits and infrastructure required to handle Abra's product (it currently handles similar product for other producers)



Abra Mine

1. Project build complete with first concentrate production on schedule for Q1, 2023¹
2. Is one of the cleanest & largest undeveloped lead deposits in the world
3. Abra will produce high grade, high value lead-silver concentrate with 1/10th typical deleterious elements
4. JV between Galena 60% & Toho 40% underpins long mine life (13+ years) in exciting new mineral province in WA²
5. Toho is largest refined lead supplier into strong & established Japanese market (Chigirishima smelter and refinery, Hiroshima)
6. Galena has 10-year offtake agreement finalised with IXM³
7. Project is fully funded, with a A\$30M Unsecured Reserve Facility (URF) in place for working capital risk during ramp up in early 2023⁴
8. Steady state mill throughput of 1.3Mtpa producing 93ktpa lead and 553kozpa⁵
9. Average annual EBITDA of A\$100M⁵
10. Exciting exploration ground with known copper-gold mineralisation below the Abra lead-silver deposit

Notes: 1. See Galena ASX announcement of 17 October 2022 (Abra Construction at 87% Complete - Starts Commissioning)

2. See Galena announcement of 1 April 2019 (Toho Transaction Update)

3. See Galena announcement of 24 October 2019 (Galena Offtake Agreement with IXM)

4. See Galena ASX announcement of 26 July 2022 (Galena Successfully Raises \$17M)

5. See Galena ASX announcement of 25 July 2022 (Re-Release: Abra Initial Production Guidance)





東邦亜鉛株式会社 TOHO ZINC CO., LTD.

2019 – Abra JV

2010's – Open Rasp mine in NSW(2012), **Acquire 100% CBH Resources**

2000's – **CBH Resources Ltd, Australia**. Silver upgrade Chigirishima

– Tianjin & Gunma Kankyo Lead recycling JV's

1990's – JV Dalian Jingya & Guang Ming Co electric components

1980's – Annaka Cadmium Oxide smelter & refinery

1970's – Lead sound insulation boards, SOFT CALM

1960's – Onahama Zinc & Fujioka Iron smelters & refineries established

– Gran Bretana mine Peru & Qaleh Zari mine Iran

1950's – **Chigirishima** converted from Copper to Lead smelter & refinery

1930's – **Toho Zinc Co established** from Japan Zinc Smelting Co

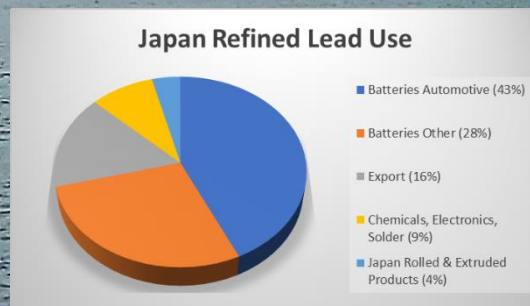
Japan contributes 2% of worlds refined lead production (230-250ktpa)

Toho top producer in Japan domestic market (100ktpa refined Lead)

Toho imports 140-160ktpa Lead concentrate to Chigirishima

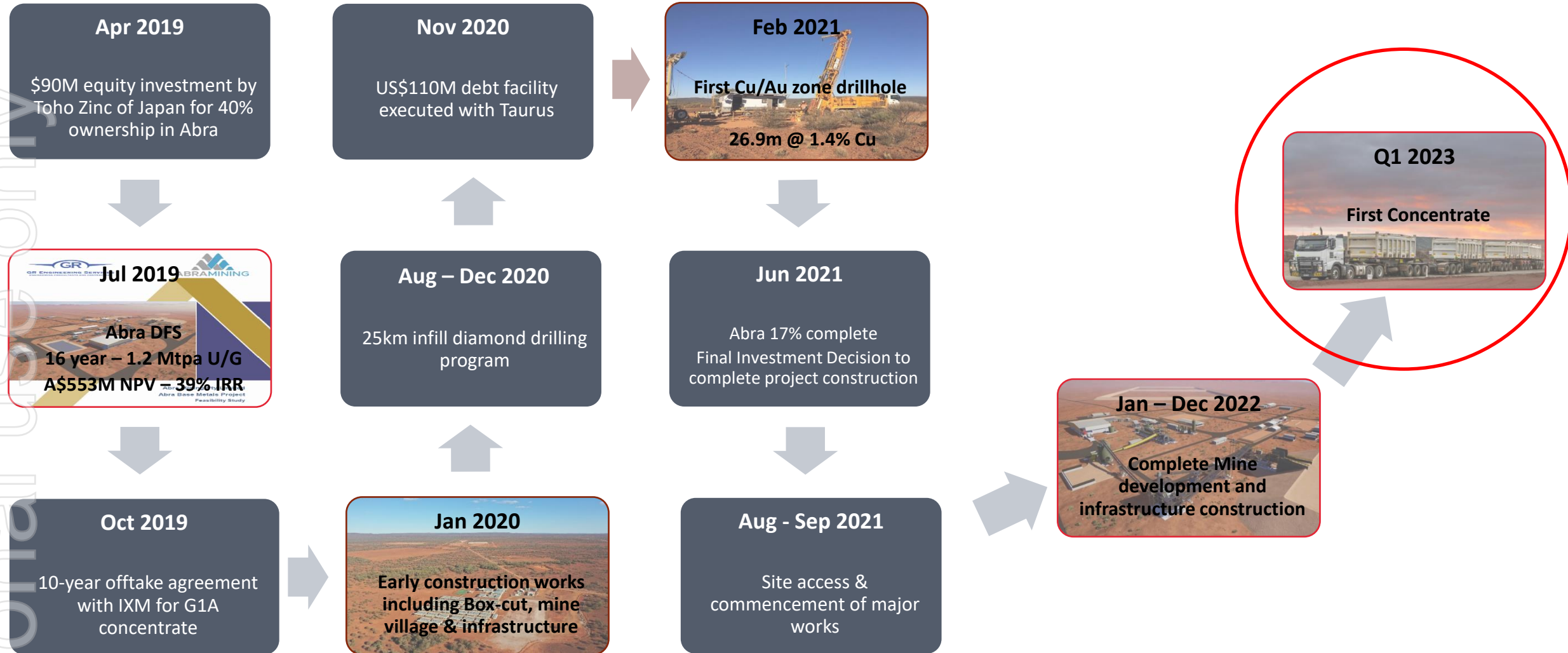
TOHO investment in Abra

Concentrate Supply	Abra	Typical Other
Time frame	13+ years	
Qty	Min 50ktpa	
Lead grade	75 %	55 - 65 %
Silver grade	129 g/t	100 - 2,000 g/t
Deleterious Elements (DE)	1/10 th DE	DE



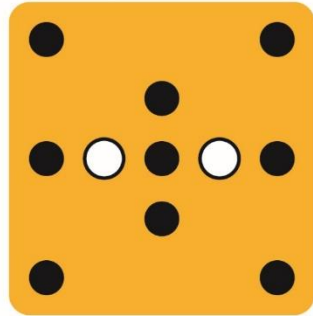


Abra project timeline





Key contractors & service providers



BYRNECUT



GR ENGINEERING SERVICES
ENGINEERING CONSULTANTS AND CONTRACTORS

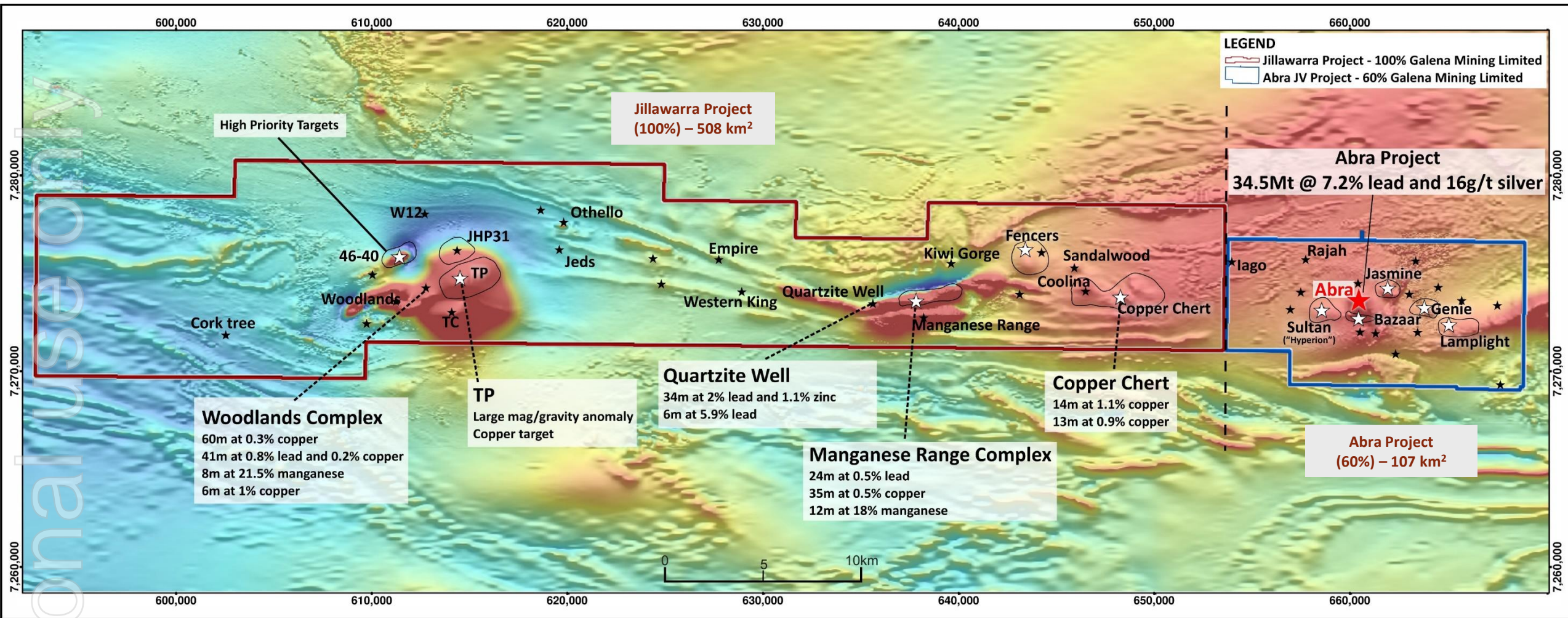


COBHAM



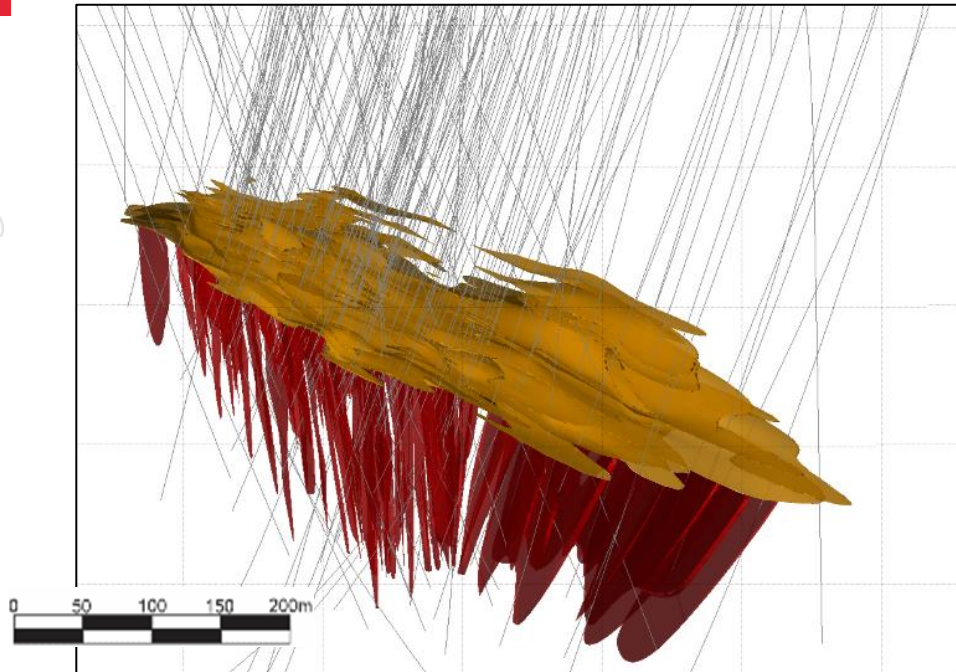


Mine being built within potential “Cluster” of deposits





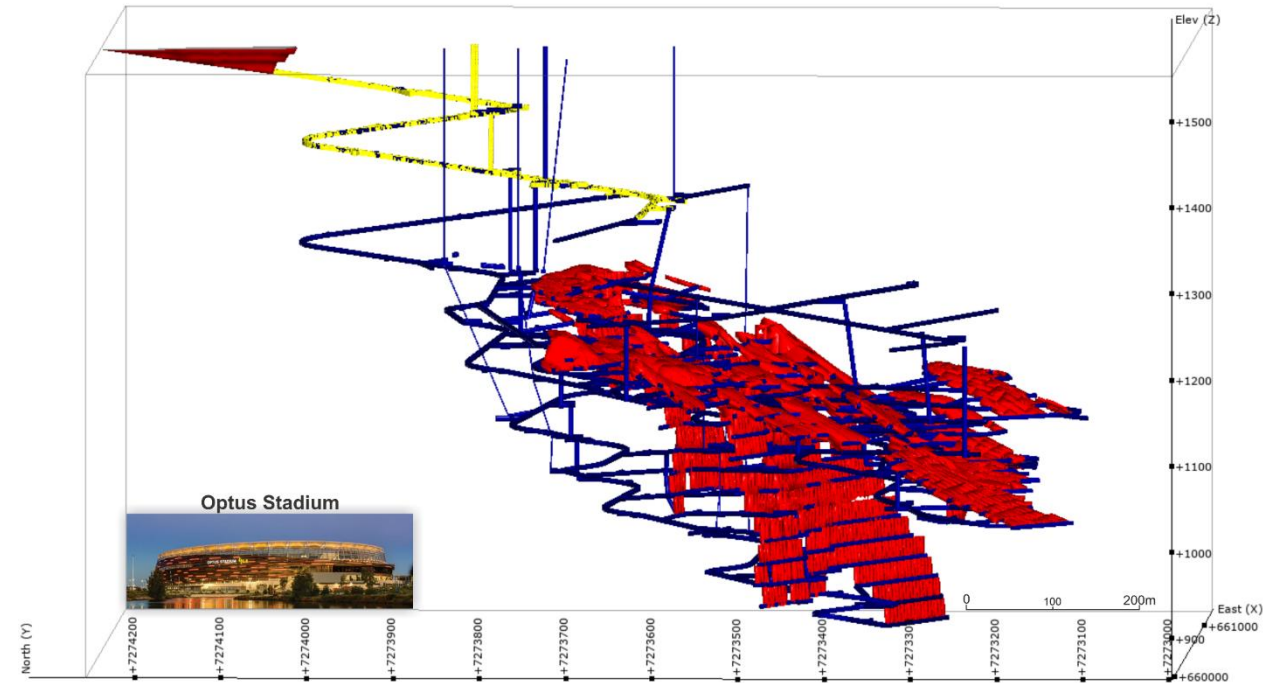
Abra Mineral Resource & mine plan



JORC Mineral Resource estimate (April 2021 Resource) at a 5% lead cut-off grade¹

<u>Resource classification</u>	<u>Tonnes (Mt)</u>	<u>Lead grade (%)</u>	<u>Silver grade (g/t)</u>
Indicated	16.9	7.4	17
Inferred	17.5	7.0	15
Total	34.5	7.2	16

Notes: 1. For more detail on Mineral Resource Estimate please see Galena ASX announcement of 28 April 2021.



Updated Mine Plan – Production metrics²

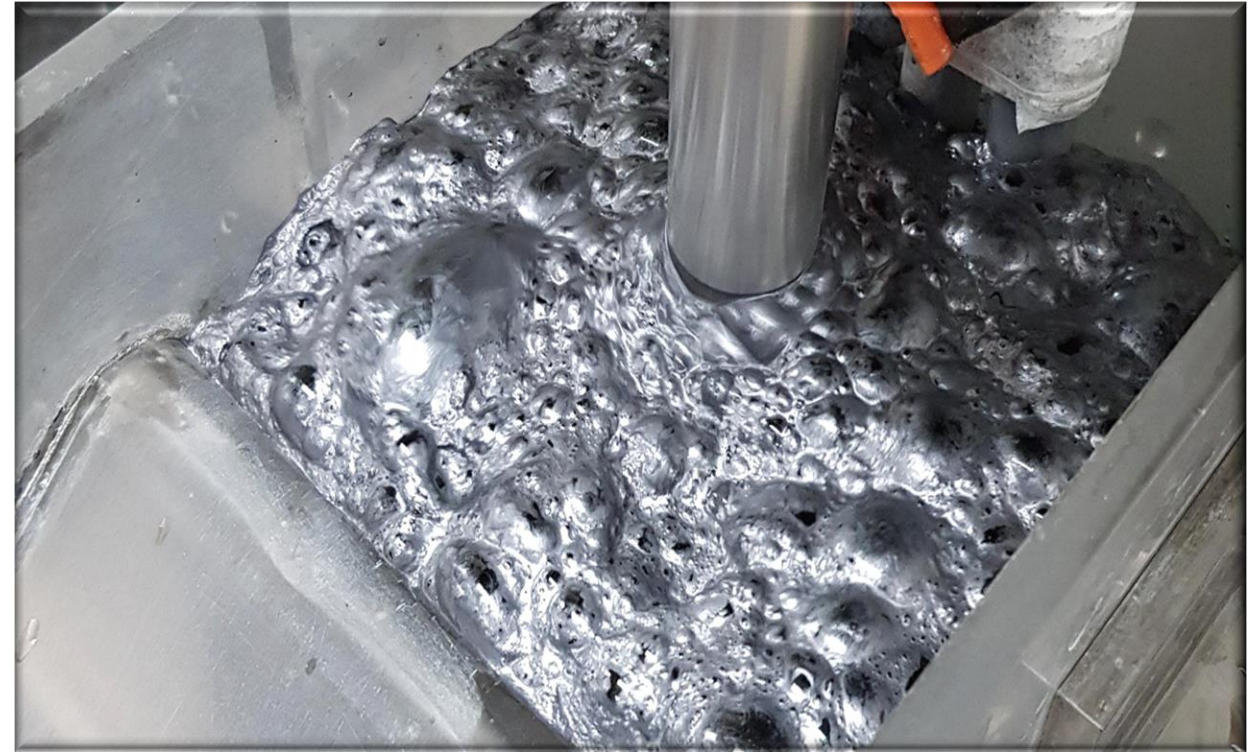
Mill throughput	1.3Mtpa
Initial mine life	13-years
Average LOM lead metal production	93ktpa
Average LOM silver metal production	553kozpa

Notes: 2. For more detail please see Galena ASX announcement of 25 July 2022 (Updated Mine Plan)



Abra processing & concentrate production

- Metallurgical testing confirms high recoveries – 94% used in FS recovery work
- Conventional 3-stage crushing, grinding, flotation and filtration
- Product to be highest grade primary lead concentrate available globally – 75% lead and 80 - 200g/t silver
- 40% of concentrate production to Toho Zinc on benchmark terms
- 60% of concentrate being Galena portion committed to IXM under 10-year contract providing a significant premium to benchmark (high quality concentrate)



Flotation Test Work.



Thankyou
www.galenamining.com.au

Galena Mining Limited

