

ASX: CXO Announcement

27 February 2023

First Spodumene Concentrate Produced

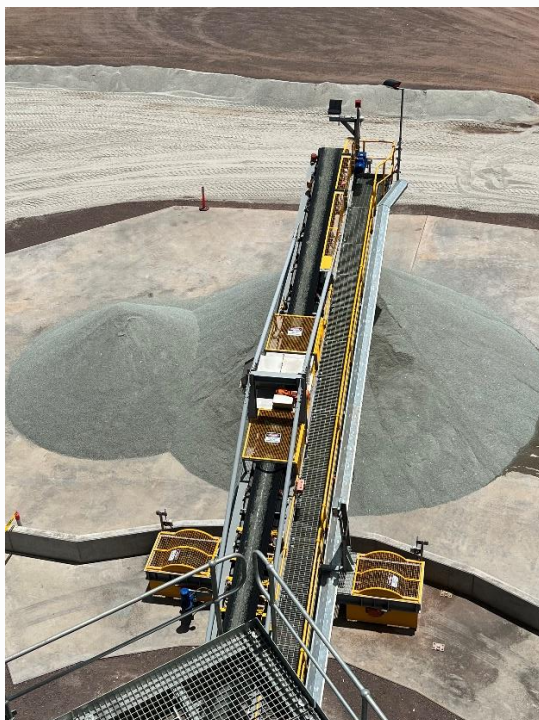
Highlights

- First spodumene concentrate has been safely produced
- Construction of the DMS plant is complete and commissioning is well advanced
- Safe commissioning of the DMS plant marks the successful completion of construction activities at Finniss

Australian lithium miner Core Lithium Ltd is pleased to announce that the Dense Media Separation (DMS) plant at the Finniss Lithium Operation (Finniss), in the Northern Territory, has produced first volumes of high quality spodumene concentrate.

Since construction commenced in November 2021, Core has established mining operations, constructed water management infrastructure, and built and commissioned the crushing facility.

The Company has now also completed construction of the DMS plant and advanced commissioning to a point where concentrate production has commenced.



First Concentrate from the Finniss Lithium Mine



Finniss Spodumene Concentrator



Finniss Processing Facilities – Crushing and DMS Plants at night

Safe commissioning of the DMS plant is a key milestone in the development of the Finniss Lithium Mining Operations and marks the successful completion of construction activities at this ground-breaking project, the first Australian lithium-producing operation outside of Western Australia.

The DMS plant is producing high quality spodumene concentrate. The maiden production of lithium concentrate will remain at Finniss until there are sufficient volumes to be transported to the Darwin Port for the first concentrate export shipment.

As previously announced, Grants pit ore production has been impacted by the significantly higher than average rainfalls in the month of December across the Northern Territory and much of northern Australia. This has led to the accumulation of a significant volume of water in the base of the stage one portion of the Grants pit. Water has consequently impeded delivery of ore from the pit and consequent

concentrate production, meaning that part of the previously estimated concentrate production volume for FY 2023¹ will be delayed to FY 2024.

Production of commissioning concentrate from previously mined ore (Run-of-Mine (ROM) and crushed ore stockpiles) has now commenced. Core's first lithium concentrate shipment will be produced from these stockpiles. Transport of the first lithium concentrate shipment to the Darwin port is anticipated to be completed by the end of April 2023.

Further production of concentrate will be sourced from additional ore from future mining of the Grants pit and is subject to ramp up of the new mine and possible further adverse weather conditions. Based on our current expected timeline, future concentrate production from the mine is expected to occur by July 2023.

Core has secured offtake from lithium industry leaders Ganfeng Lithium and Sichuan Yahua, and will work closely with these key customers during the Finniss operations ramp up phase.

Commenting on commissioning of the DMS Plant Core Chief Executive, Gareth Manderson said: "Commissioning of the DMS plant represents the final step in the delivery of the Core's first mining operation. The safe and successful construction of the Finniss mining facilities during a global pandemic and through two Northern Territory wet seasons is testament to the resilience and hard work of the Core employees and contract partners, including a number of local Darwin suppliers.

"I would like to acknowledge the support that Core has received from our shareholders, customers, suppliers, contractor partners, and the Federal and Northern Territory Governments. All have played key roles in the establishment of the first Australian lithium mining operations outside of Western Australia.

"The approach to establish a mining operation, and in parallel complete the exploration work required to support potential future operations, is a credit to the business and its people. This approach has enabled Core to rapidly move the business to a position where concentrate production has now commenced.

"With construction complete, our focus moves to safely completing commissioning of the concentrator, delivery of our first cargo and ramp-up of operations at Finniss that will deliver high-quality, reliable volumes of lithium concentrate into a favourable market."

This announcement has been approved for release by the Board of Core Lithium.

For further information please contact:

Gareth Manderson
Chief Executive Officer
Core Lithium Ltd
+61 8 8317 1700
info@corelithium.com.au

For Media and Broker queries:

Gerard McArtney
Account Manager
Cannings Purple
+61 487 934 880
gmcartney@canningspurple.com.au

¹ ASX Announcement 4 August 2022 and 30 September 2022

About Core Lithium

Core Lithium Ltd (ASX: CXO) (Core or Company) is an Australian hard-rock lithium mining company that owns and operates the Finniss Lithium Operation on the Cox Peninsula, south-west and 88km by sealed road from the Darwin Port, Northern Territory. Core's vision is to generate sustained value for shareholders from critical minerals exploration and mining projects underpinned by strong environmental, safety and social standards.

For further information about Core and its projects, visit www.corelithium.com.au.

For personal use only