

December 2022 Quarterly Activities Report

Paradox Lithium Project, Utah, USA

- Major Mineral Resource upgrade confirmed at Paradox Lithium Project;
 - 1,037,900t of Lithium Carbonate Equivalent (LCE) and 5.27Mt of Bromine, including;
 - Indicated Resource of 346,109t of LCE and 1.84Mt of Bromine; and
 - Inferred Resource of 691,800t of LCE and 3.43Mt of Bromine
- A new Exploration Target for the Mississippian supersaturated brines solely for the Western Expansion Strategy consists of 2.10Bt – 2.56Bt of brine grading 108 – 200ppm Li and 2,000 – 3,000ppm Br.

The Exploration Target figure is conceptual in nature as there has been insufficient exploration undertaken on the Project to define a mineral resource for the Mississippian Units. It is uncertain that future exploration will result in a mineral resource.

- Anson delivers assay results of 101ppm lithium and 3,294ppm bromine through the entire drilled zone in the Mississippian Units at Cane Creek 32-1 well at the Paradox Lithium Project. Li grades 25% higher than previously reported historic results and confirm the massive, supersaturated brine aquifer in the Mississippian Units are lithium and bromine rich.
- Approval for re-entry of the Mineral Canyon Fed 1-3 and Sunburst 1 wells granted by the USA, Department of Interior Bureau of Land Management (BLM). Approval allows Anson to commence its Western Strategy Resource expansion program at the Paradox Lithium Project

Green River Lithium Project

- Anson staked the new Green River Lithium Project comprising a total of 1,251 placer claims for an area of 10,620 hectares at Green River, Utah. Green River Lithium Project is located just 50 kilometres northwest of the Company's flagship Paradox Lithium Project (Paradox), with similar geology as the Paradox.
- Anson will deploy the same highly successful strategy used at Paradox to time-and-cost effectively define new lithium-brine JORC Resources at Green River via re-entering existing oil wells to define new lithium-brine resources

Yellow Cat Uranium Vanadium Project

- Anson included in the Global X Uranium ETF (NYSE:URA), the largest Exchange Trade Fund (ETF) in the uranium and nuclear industry with net assets of approximately USD1.716 billion as of 25 January 2023.

Corporate

- Post the December 2022 quarter, the Company announced the appointment of COO, CFO and Project Director to strengthen its executive team as it continues development of its Paradox Lithium Project and advances its portfolio of projects.
- 1,746,233 ordinary shares were issued during the quarter following the exercise of unlisted options at various prices.
- 2,360,921 ordinary shares were issued during the quarter to directors and contractor.
- Strong balance sheet with \$45.01 million cash on hand at the end of the quarter.

Diversified minerals development company Anson Resources Limited (ASX: ASN) (Anson, the

Anson Resources Limited

Level 1, 35 Outram Street, West Perth, WA 6005, Australia

Tel: +61 478 491 355 ABN: 46 136 636 005 www.ansonresources.com

Company) is pleased to provide the following update on its activities for the period ended 31 December 2022.

Anson has a portfolio of minerals projects in demand-driven commodities, led by its core asset, the Paradox Lithium Project (Project) in Utah, USA. It is focused on developing the Project into a significant lithium producing operation.

Paradox Lithium Project, Utah

During the quarter, the Company delivered a major Resource update for the Project, following the conclusion of a Definitive Feasibility Study (DFS) (see *ASX announcement dated 8 September 2022*). The Project is fully funded to Final Investment Decision. Anson is developing the Project into a substantial lithium producing asset.

Anson is using the DFS results to further discussions with prospective off-take and funding partners. Anson also advanced engineering and permitting activities during the quarter.

Major Mineral Resource Upgrade

The new, upgraded Mineral Resource (see *ASX announcement 2 November 2022*) is;

- **1,037,900 tonnes of lithium carbonate equivalent (LCE) and 5,274,900 tonnes of bromine, including;**
 - **Indicated Resource of 346,109 tonnes of LCE and 1,840,000 tonnes of bromine; and**
 - **Inferred Resource of 691,800 tonnes of LCE and 3,434,900 tonnes of bromine**

The new, upgraded Mineral Resource was estimated from Anson's recently completed drilling and sampling at the Cane Creek 32-1 well, and has been added to its recent Mineral Resource upgrade confirmed from drilling and sampling at the Long Canyon Unit 2 well (see *ASX announcement 22 August 2022*).

The new, upgraded Mineral Resource represents a;

- **24% increase on the previously reported Lithium Mineral Resource; including**
- **31% increase in the Indicated Resource on the previously reported Lithium Mineral Resource; and**
- **33% increase on the previously reported Bromine Mineral Resource.**

A summary of the JORC 2012 Mineral Resource Estimate is presented in Table 1. Significant amounts of other minerals including Bromine (Br₂), Boron (Boric Acid, H₃BO₃) and Iodine (I₂) have also been estimated. A breakdown of the Mineral Resources by aquifer is shown in Table 2. The Resource does not take into account potential replenishment of the brine zones.

Category	Brine Volume (Ml ³)	Brine Tonnes (Mt)	Li (ppm)	Br (ppm)	Contained ('000t) ¹	
					LCE	Br ₂
Indicated	4,350	530	123	3,474	346	1,840
Inferred	8,108	1,038	125	3,308	692	3,434
Resource	12,458	1,568	124	3,364	1,038	5,275

Table 1: Paradox Lithium Project Total JORC Mineral Resource upgraded estimation.

Horizon	Clastic Zone	Category	Brine (Mt)	Li (ppm)	Br (ppm)	Contained ('000t) ¹	
						LCE	Br ₂
CZ31	31	Indicated	47	173	3,054	44	144
CZ31	31	Inferred	77	182	2,543	74	195
CZ31 Resource			124	178	2,736	118	339
Other Clastics	17, 19, 29, 33, 43, 45, 47, 49	Indicated	179	83	3,378	79	604
Other Clastics	17, 19, 29, 33, 43, 45, 47, 49	Inferred	453	98	3,102	236	1,406
Other Clastics Resource			632	94	3,181	315	2,010
Mississippian		Indicated	304	138	3,596	224	1,092
Mississippian		Inferred	508	141	3,606	381	1,834
Mississippian Resource			812	141	3,371	605	2,926
TOTAL RESOURCE			1,568			1,038	5,275

Table 2: Paradox Lithium Project Mineral Resource Estimate for Clastic Zone 31, additional Clastic Zones and Mississippian Units.

¹ Lithium is converted to lithium carbonate (Li₂CO₃) using a conversion factor of 5.32 and boron is converted to boric acid (H₃BO₃) using a conversion factor of 5.72. Rounding errors may occur.

The combined Total Indicated Resource for Clastic Zone 31 and the Mississippian is 367,100 tonnes of lithium carbonate at an average grade of 144ppm, see Table 2. The additional tonnages from these two zones - without any future upgrades - would be used to support future mine life extension. Lithium extraction test work on the Project's lithium brine has previously been completed successfully at these lithium grades.

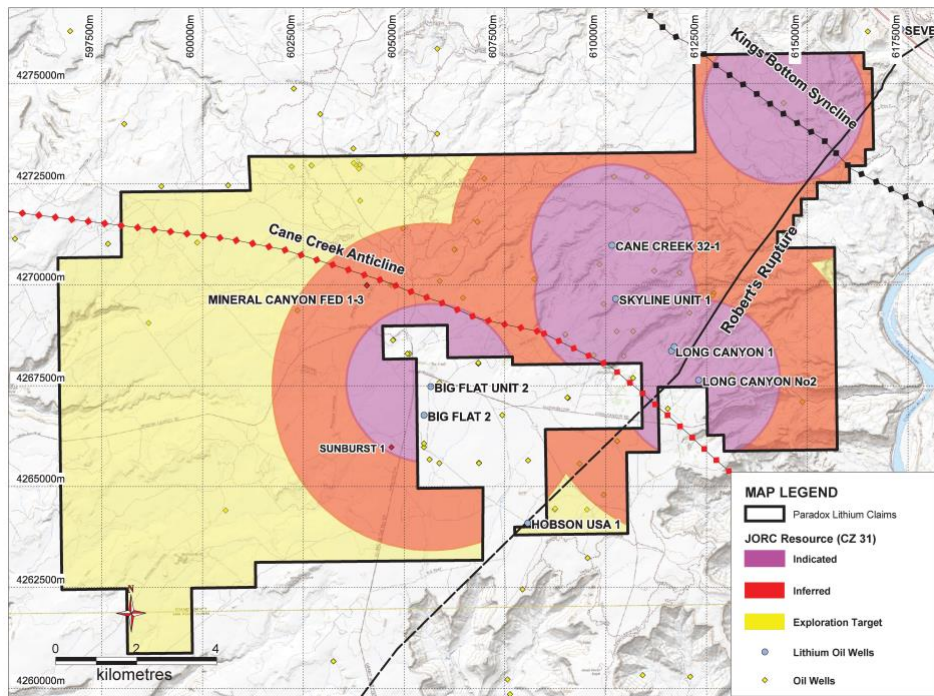


Figure 1: Plan shows the Mineral Resource classification for the Clastic Zone 31 horizon.

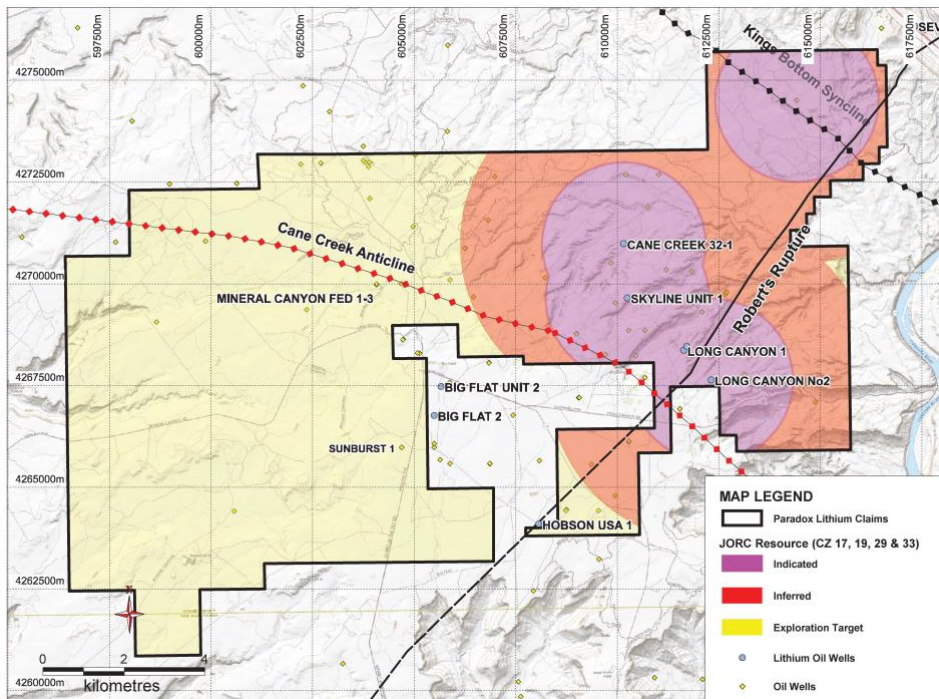


Figure2: Plan shows the Mineral Resource for the Clastic Zones 17, 19, 29 and 33 horizons which all have the same Area of Influence (AOI).

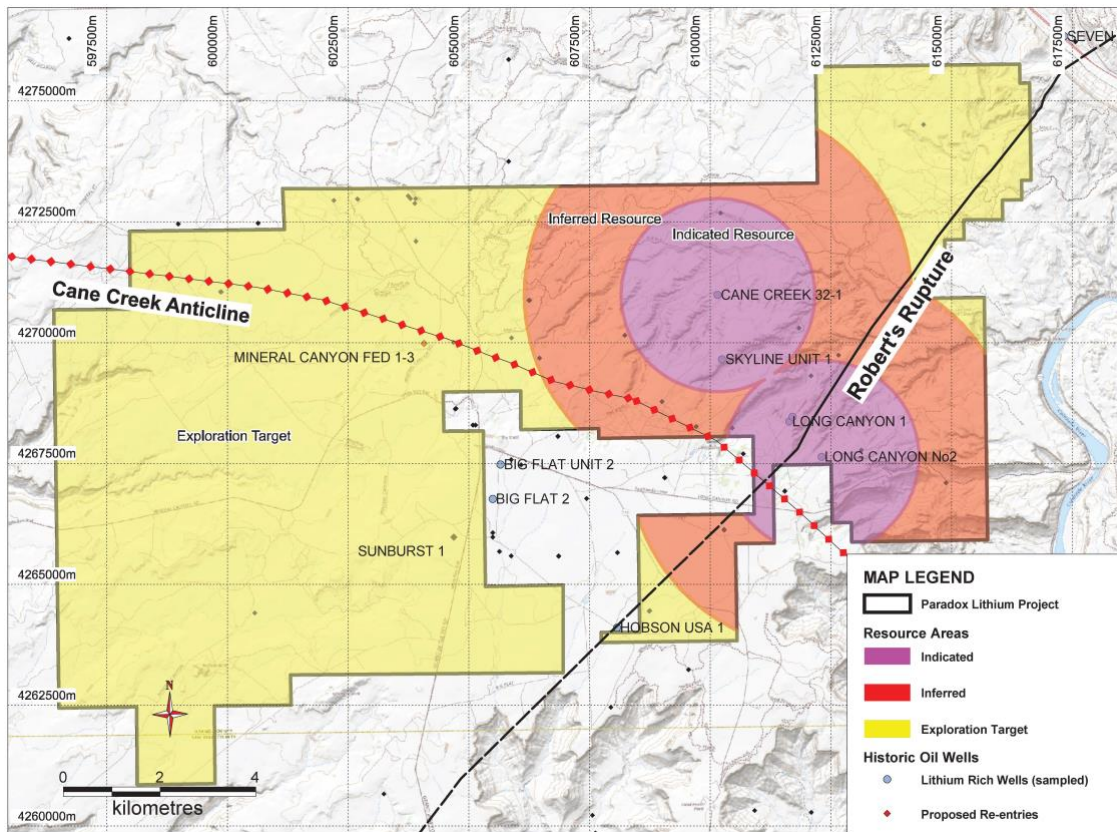


Figure 3: Plan shows the upgraded Mineral Resource classification for the Mississippian Units.

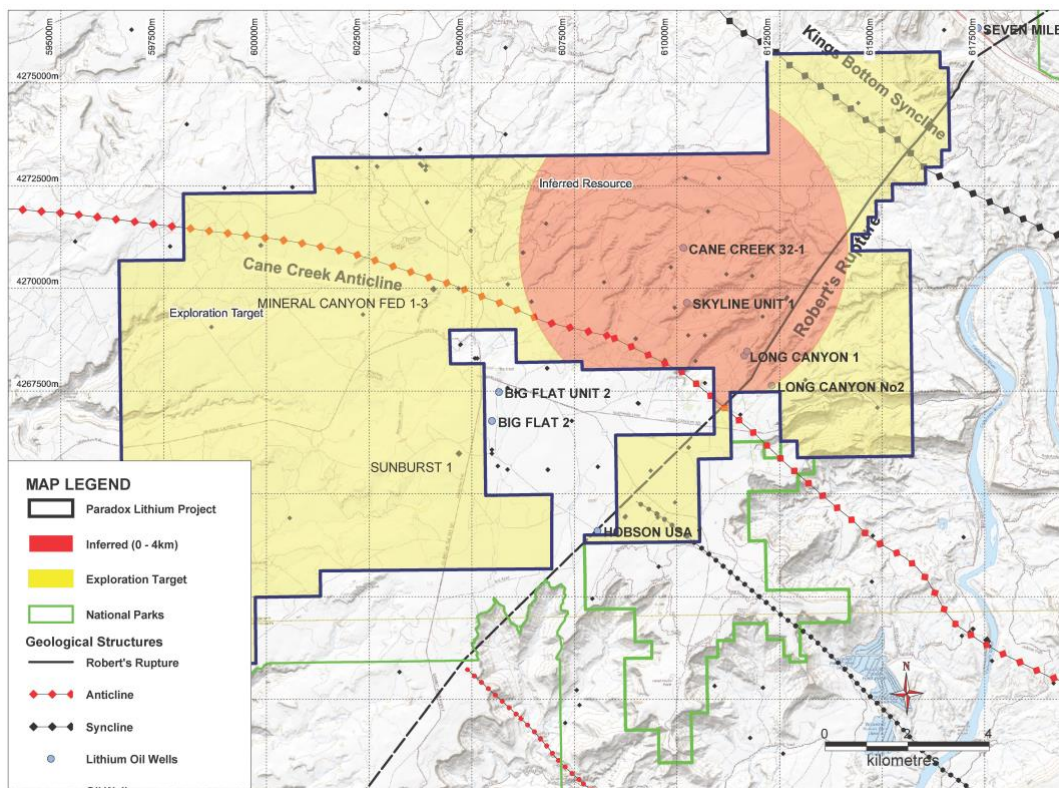


Figure 4: Plan shows the Mineral Resource for the additional Clastic Zones (43, 45, 47, 49) sampled.

Background to Mineral Resource Upgrade

The previous Paradox Mineral Resource was estimated from just the brine aquifers of Clastic Zones 17, 19, 29, 31 and 33 of the four wells previously re-entered by Anson and the Mississippian Units in the Long Canyon Unit 2 well. The Indicated and Inferred Resource for Clastic Zone 31 is shown in Figure 1 and the JORC Resource for Clastic Zones 17, 19, 29 and 33 are shown in Figure 2 (note the resource categories Area of Interest for these Clastic Zones is the same in each horizon).

The new, upgraded Mineral Resource was estimated from the Company's recent drilling and sampling at the Cane Creek 32-1 well (the resource areas for the Mississippian units for both the recently drilled wells are shown in Figure 3). Anson's resource expansion drilling campaign also included the drilling and sampling of additional Clastic Zones at the **Cane Creek 32-1 well** which were classified as an Inferred Resource, see Figure 4, as there is little historical data relating to these horizons.

Western Resource Expansion Program

The Company has received approval from both the Department of the Interior, Bureau of Land Management (BLM), see *ASX Announcement 5 October 2022*, and the Utah Division of Oil, Gas and Mining (UDOGM), see *ASX Announcement 25 January 2023*, to commence its 'Western Expansion' strategy by re-entering historic drillholes in the western areas of the Project. This may result in a significant increase in the block model grades and ultimately the product tonnages for the clastic zones, and also the new Mississippian units where there are little previous recorded assays. The Mississippian units in the western strategy have an average thickness of 142 metres, previously recorded in historical oil well drilling. Figure 5 shows the oil wells that were drilled into the Mississippian.

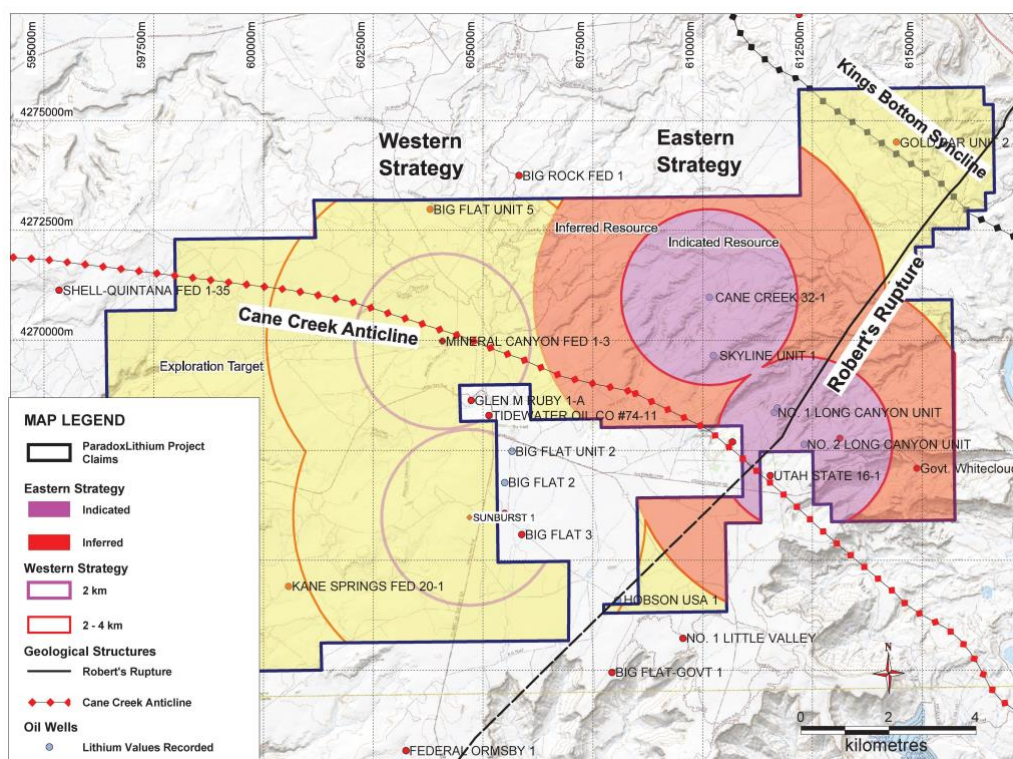


Figure 5: Plan showing the Mississippian Resource from the eastern strategy and the wells drilled into the Mississippian units in the western area of the Project.

It is expected that the results of drilling in both these target areas will be included in future Mineral Resource upgrades at the Project.

Further drilling programs in the 'Western Expansion' Strategy will seek to define additional Indicated Resources, and significantly increase the Indicated-to-Inferred Resource ratio - as existing Inferred Resources are converted to the Indicated category, see Figures 1 to 5.

Project Summary:

The Paradox Lithium Project consists of 1,846 placer claims, 87 that are subject to an earn-in agreement¹ and the remainder are 100% owned by Anson² in Utah, USA. In addition, three state Potash and Mineral leases and two state industrial leases are included in the Project area.

Green River Lithium Project

Post the December quarter, Anson Resources completed the staking of the new Green River Lithium Project comprising a total of 1,251 placer claims for an area of 10,620 hectares (see ASX announcement 30 January 2023), see Figure 6, at Green River, Utah.

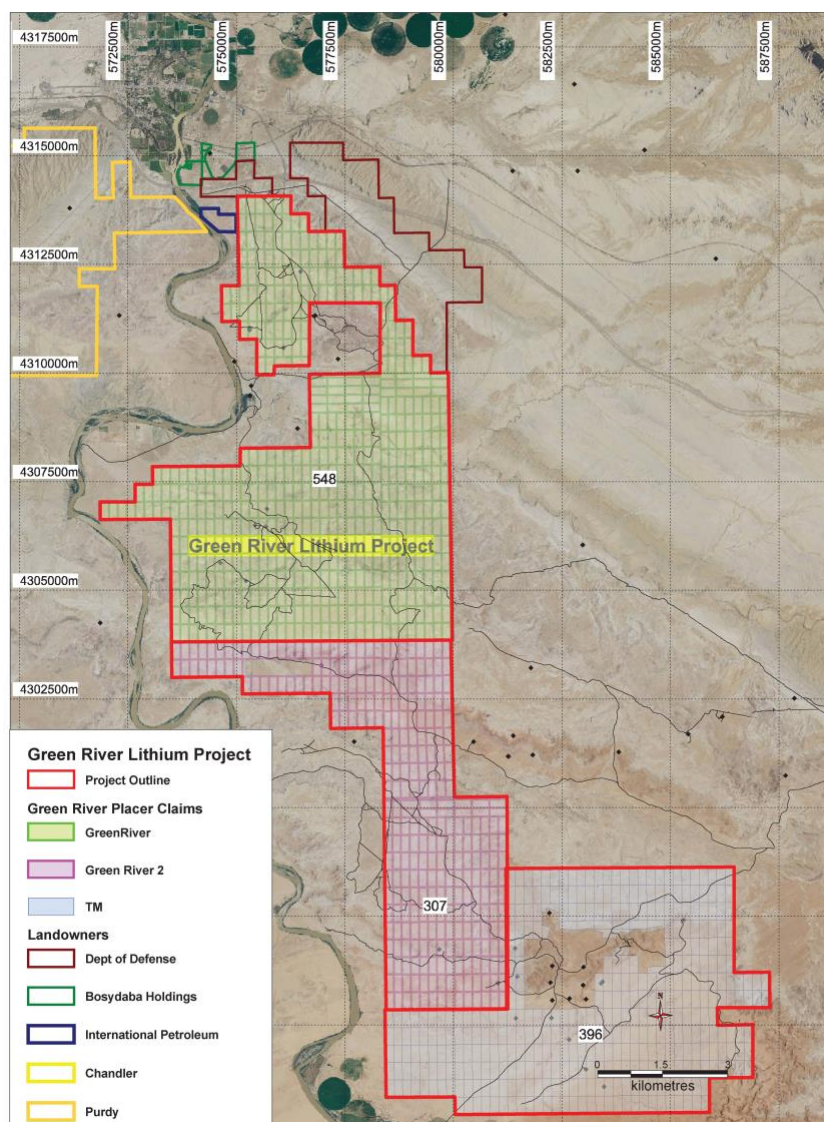


Figure 6: Plan showing the newly pegged claims within the Green River Lithium Project.

¹ Anson commenced with a 10% interest in these 87 claims which increased to 50% from the work done, and may be subject to finalisation under the terms of the agreement to earn-into the ULI Project

² 65 claims owned by Anson may be subject to area of interest provisions of the agreement to earn-into the ULI Project.

Anson is currently carrying out environmental, archaeological and land surveys for a Notice of Intent (NOI) to re-enter three oil wells in the new project area for submittal to the USA, Department of Interior Bureau of Land Management (BLM). Due to the previous drilling, the pad locations are already level and will require very little earthworks to re-establish the drill pad area.

The thicknesses of the Mississippian units that it is very large reservoir and combined with the Clastic Zone horizons it is anticipated that it will result in a significant Exploration Target which may be readily converted to a JORC Resource by completing a small exploration program.

The claims overlay many historically plugged and abandoned oil and gas wells which can be re-entered at a much lower cost than drilling new holes. A lot of these wells have been drilled into the thick Mississippian units. This will enable sampling of the brines which have already been recorded in the Mississippian units and the numerous clastic zones.

The project area is suitable for both the extraction of the brine and disposal of the waste brine back down into a suitable formation if the exploration program is successful in proving up a lithium JORC resource. This has been shown in historical Drill Stem Tests (DST) in which brines have flowed up the tubing. In addition, some of these wells have already been used as disposal wells.

Bull Nickel-Copper-PGE Project

The Bull Project is located only 35km from Perth abutting Chalice Gold Mines Limited's (Chalice) (ASX: CHN) tenements and is 20km south-west along strike of Chalice's high-grade Julimar Ni-Cu-PGE discovery (see Figure 7). Anson also pegged an additional tenement that abuts the Bull Project area to the south, ELA70/5619.

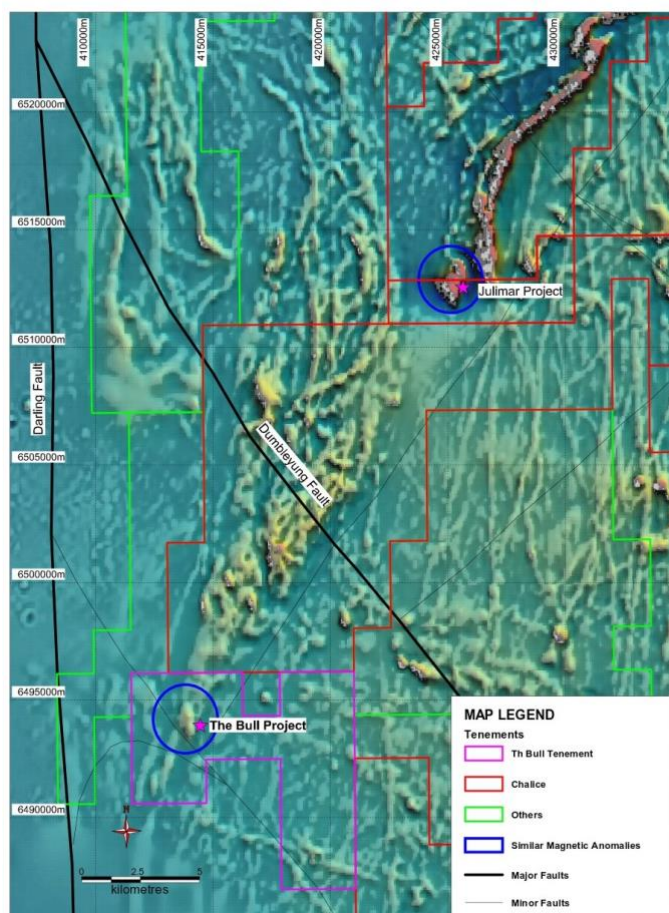


Figure 7: TMI image showing the location of the Bull Project and the associated magnetic signatures in relation to the Julimar discovery.

During the quarter negotiations continued with the 3 landowners in which exploration programs are planned. These negotiations are in the final stages of completion.

Priority drill targets have been defined based on geophysical surveys, geological mapping and rock chip sampling programs. Stage 1 drilling consist of 18 holes focusing on priority areas 1, 2 and 3, and will be drilled to a depth of 200m from west to east at a 60° angle to maximize potential intersection of the targeted anomalous ultramafic units, See Figure 8.

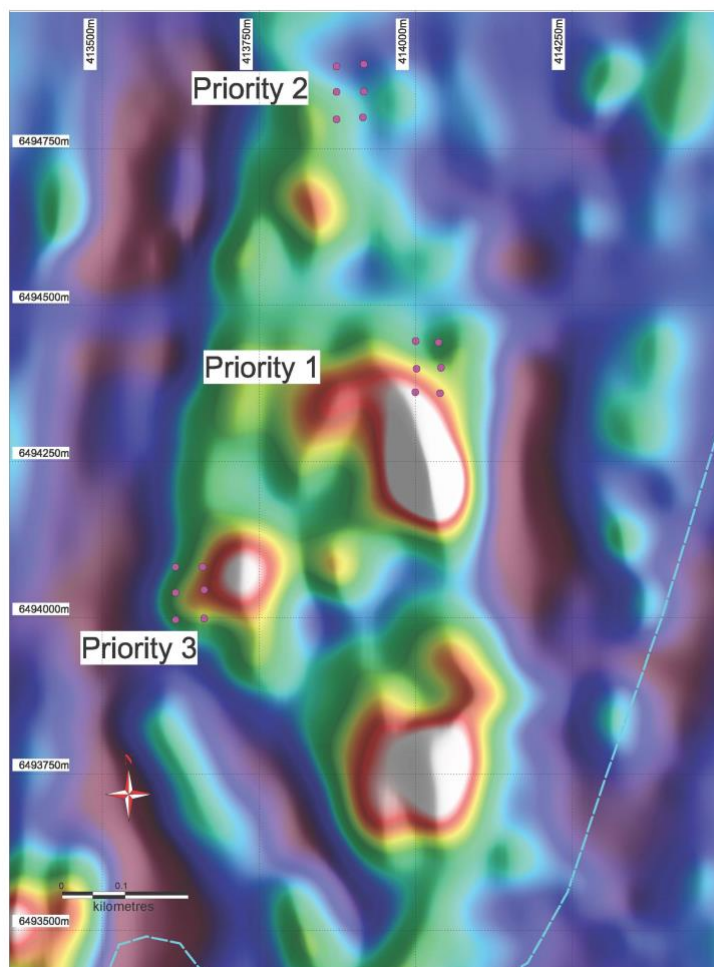


Figure 8: Drone Mage RTP image at the Bull Project showing proposed drillhole locations.

The magnetic image interpretation in Figure 8 shows the distinct internal character of the magnetic anomaly at The Bull. Rather than a homogenous ovoid-shaped magnetic anomaly, the anomaly appears to be comprised of a series of magnetic high lenses and potential structural offsets.

Yellow Cat Vanadium / Uranium Project

Anson included in the Global X Uranium ETF (NYSE:URA), the largest Exchange Trade Fund (STF) in the uranium and nuclear industry with net assets of approximately USD1.716 billion as of 25 January 2023. The inclusion in the Global X Uranium ETF followed Anson being added to the Solactive Global Uranium and Nuclear Components Total Return Index (SOLURANT Index) tracked by the ETF. Solactive has announced that Anson will be included in an ordinary Index rebalancing that will be effective 1 February 2023, see ASX Announcement 27 January, 2023.

The Yellow Cat Project is located 30 km north of Moab, in the Thompson District, Grand County

Utah. There are two separate areas: the Yellow Cat claims and the Yellow Cat West claims.

The Yellow Cat Project is considered prospective for the development of both uranium and vanadium due to the high historic grade mineralisation present on the claims. The project is located in a region that is increasingly sought-after by companies exploring for uranium, supported by the recent increase in uranium prices.

Surface outcrops and ore pad grab samples have previously been submitted for laboratory analysis.

High grade assay values of up to 87,600ppm uranium (U) (10.33% U_3O_8) and 143,500ppm vanadium (V) (25.61% V_2O_5) were reported. A summary of the results of the elemental values and the more common metal oxides are shown in Table 3 below and the locations can be seen in Figure 9.

Anson is sourcing quotes from contractors to carry out surveys required to get approvals for exploration drilling programs. The aim of the exploration programs is to confirm existing drilling results and to extend the known mineralisation along strike and down dip, see Figure 9.

Location ID	Northing	Easting	Sample ID	U_3O_8 (%)	V_2O_5 (%)	Comments
YC2	4,299,798	627,312	YC20007	6.65	4.69	Exposed mineralisation, UG workings
			YC20008	10.33	2.46	
			YC20010	0.94	23.92	
YC3	4,301,989	634,173	YC20004	3.27	5.87	Exposed mineralisation, UG workings
YC4	4,299,789	627,312	YC20014	1.43	1.77	Ore pad grab samples
YC8	4,300,420	627,803	YC20022	1.07	10.16	Exposed mineralisation, UG workings
YC10	4,302,105	634,215	YC20006	0.86	14.57	Exposed mineralisation, UG workings
YC11	4,302,017	633,665	YC20012	0.05	25.61	Exposed mineralisation, UG workings

Table 3: Selected assay results for Uranium and Vanadium at Yellow Cat.

Notes:

1. Underground sample location coordinates are based on location of the closest underground adit. Ore pad grab samples location coordinates are for the ore pad sampled.
2. Conversion of uranium (U) to uranium oxide (U_3O_8) is by factor of 1.179.
3. Conversion of vanadium (V) to vanadium oxide (V_2O_5) is by a factor of 1.785.

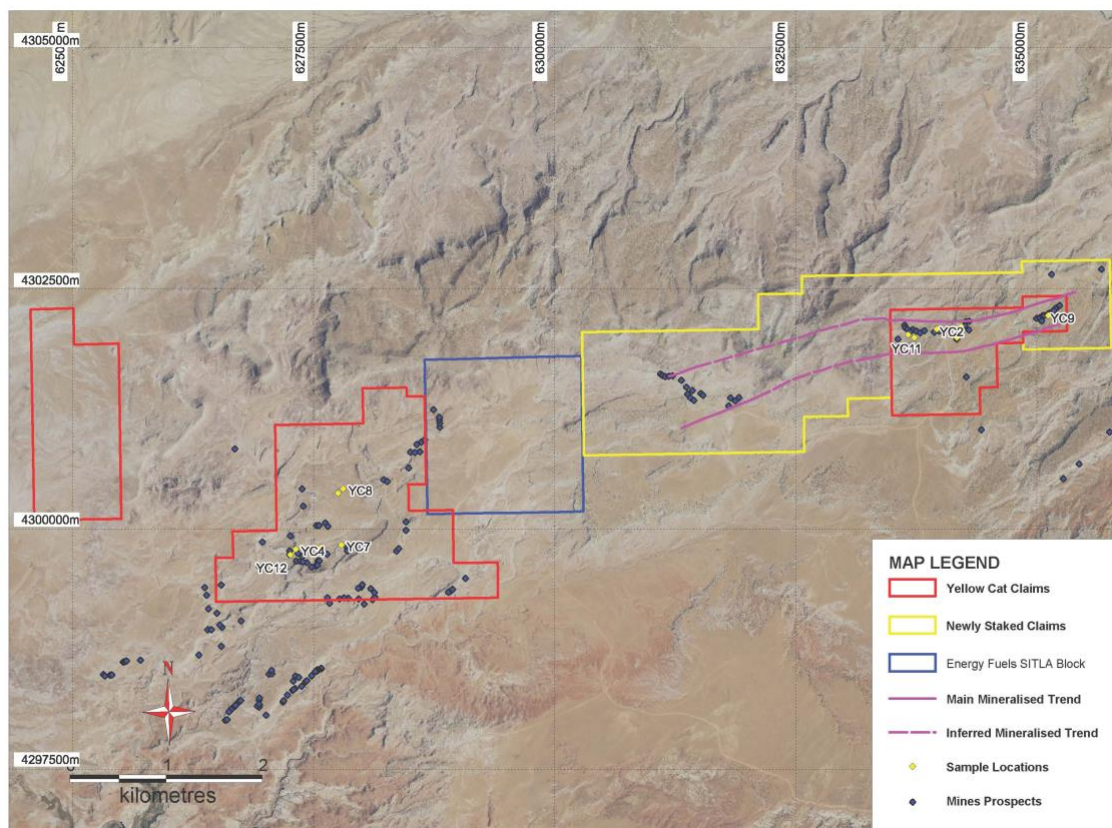


Figure 9: Plan showing the Yellow Cat claims and the inferred mineralised trend to follow up.

The Ajana Project

The Ajana Project is located in Northampton, Western Australia, a proven and established mining province for zinc, lead and silver. The Ajana Project is adjacent to the North West Coastal Highway and 130km north of Geraldton. Historical exploration in the area has concentrated on the search for lead and zinc deposits. The prospective ground on the tenements E66/89 and E66/94 is dominated by the Northampton Metamorphic Complex.

Historical exploration in the area has concentrated on the search for lead and zinc deposits. The Ajana Project contains several historic copper, lead and silver producing mines that date back to 1850.

The Mary Springs tenement contains a JORC 2012 Mineral Resource estimate which is summarised in Table 4. The global Indicated and Inferred Resource estimate is 390,000 tonnes grading at 6.5% Pb. Zones of Pb-Zn-Cu-Ag rich mineralisation have been intersected in recent drilling but were not included in modelling the resource. Further drilling may enable the zinc, copper and silver bearing zones to be modelled as part of a future resource.

Category	Indicated			Inferred			Total		
	BCM	Tonnes	% Pb	BCM	Tonnes	% Pb	BCM	Tonnes	% Pb
+ 1% Pb	80,000	240,000	6.6	50,000	150,000	6.2	130,000	390,000	6.5

Table 4: Mary Springs Mineral Resource Estimate, JORC 2012.

Anson has received approval for three POW's at the Ajana Project from the Department of Mines, Industry Regulation and Safety (DMIRS) and completed a heritage survey, which

included archaeological and ethnographical work area clearance, at the proposed sites for the exploration programs to be carried out, see Figure 10. The survey was undertaken with the full involvement of the Nanda representatives who were nominated by the native title group. The survey was completed over the Surprise, Ethel Maud and Block 1 prospect areas.

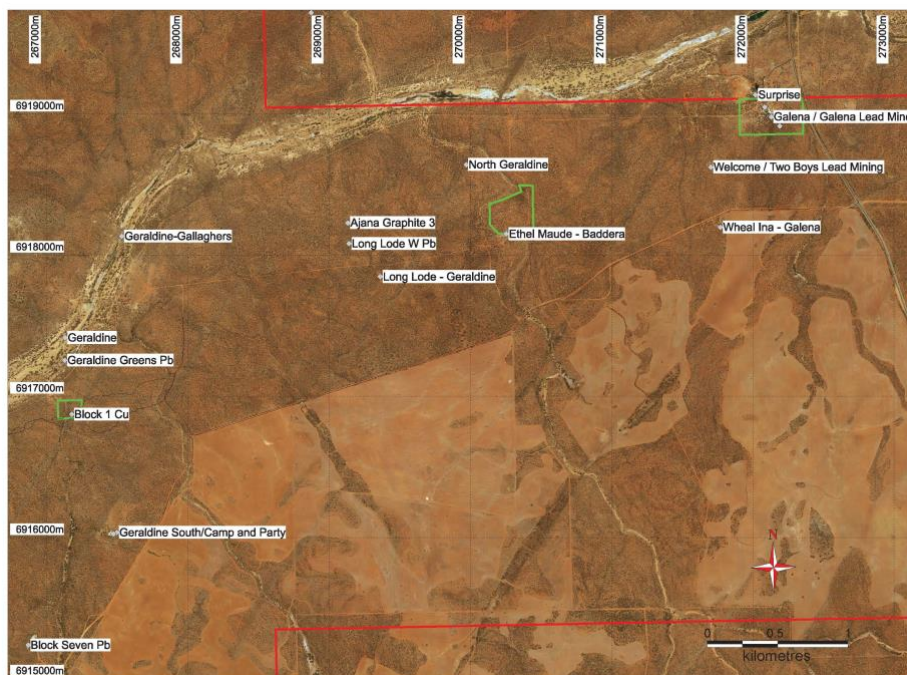


Figure 10: Plan showing the areas approved for exploration in the submitted POW's and cleared in the heritage survey (green) and local prospect locations.

The proposed three exploration programs will consist of reverse circulation (RC) drilling under and along strike of existing pits and mine shafts in the areas approved for exploration in the POW's and cleared by the heritage survey.

It was also noted that most of the known prospects have been identified along north-east trending dolerite dykes and considered to be "in echelon" type (parallel formation) deposits, similar to the Mary Springs mine. However, historic small mining operations also identified a number of prospects were located between these dykes that were cross-cut by faults which may increase the grade of mineralisation as has occurred with the zinc at Ethel Maude, see Table 5.

Target Area	Mine	Grades				Comments
		Zn (%)	Pb (%)	Cu (%)	Ag (g/t)	
Geraldine	Ethel Maude*	43.0	11.3	NA	6.5	Samples from shafts
Surprise	Surprise**	Not Assayed	10.5	Not Assayed	Not Assayed	Production figures

Table 5: Table showing the target areas and grades of minerals previously sampled.

Anson advanced planning for the 1,990m reverse circulation drilling program at the Ajana Project with the appointment of a drilling company to carry out the program in the next quarter and a contractor was appointed for the local clearance work to prepare access and drill sites prior to the drilling programs commencing.

Hooley Well Cobalt-Nickel Laterite Project

The Hooley Well Nickel-Cobalt Laterite Project is located 800km north of Perth and 300km north-east of Geraldton in Western Australia consisting of three tenements E9/2218, E9/2219 and E9/2462. Tenements E9/2218 and E9/2219 contain historical shallow drilling which has intersected nickel and cobalt laterites. There are also possible primary nickel sulphides (identified by IP response) at depth.

During the quarter an Extension of Term was applied for E9/2218 and was approved by the Department of Mines, Industry Regulation and Safety (DMIRS).

The project contains extensive nickel, cobalt and chromite mineralisation over an area of 1.5km x 0.8km. Results of some historic drilling are shown below.

- HAC004, 22m @ 0.97% Ni & 0.06% Co & 1.05% Cr
 - Incl. 4m @ 1.41% Ni & 0.11% Co & 1.99% Cr
- HAC003, 33m @ 0.5% Ni & 0.04 % Co & 0.55% Cr
 - Incl. 8m @ 0.84% Ni & 0.10% Co & 0.22% Cr

Anson had previously flown a drone aeromagnetic survey over the E9/2218 and 2219 tenements on a line spacing of 50m and at a height of 25m. With the completion of the processing of the aeromagnetic data obtained from the drone surveys, further interpretation of the data has begun, see Figure 11.

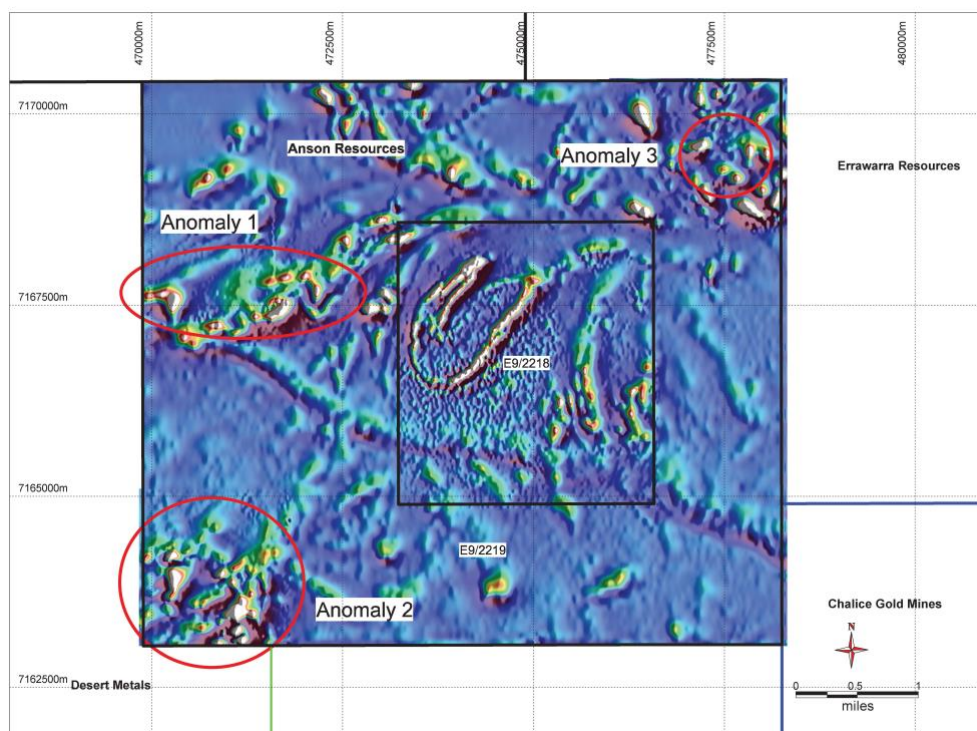


Figure 11: TMI1VD image of the Hooley Well tenements E9/2218 and E9/2219.

Interpretation at 1:20,000 is being carried out over the surveyed area and interrogated at a closer scale of approximately 1:10,000. A comprehensive interpretation of the aeromagnetic data includes all the relevant geoscientific information, allowing for the mapping of lithologies and structure.

This work involves:

- Compilation of geoscientific data, including the newly processed airborne magnetic and radiometric data, into GIS
- Interpretation of:
 - Domains of magnetic and radiometric anomalism;
 - Delineation of magnetic and radiometric trends;
 - Interpretation and classification of structures (lineaments, faults and folds); and
 - Delineation and interpretation of lithology and stratigraphic relationships.
- Selection and prioritisation of targets

Once the processing of the aeromagnetic data is completed, processing of historical radiometric surveys will be carried out to target Rare Earth Element mineralisation due to a REE Resource being proved up east of the Hooley Well tenements.

REE mineralisation has also been recorded in drillholes that abut the western side of the Hooley Well tenements.

The historical ternary imagery over Hooley Well is similar to that of the Krakatoa's mineral resource, see Figure 12.

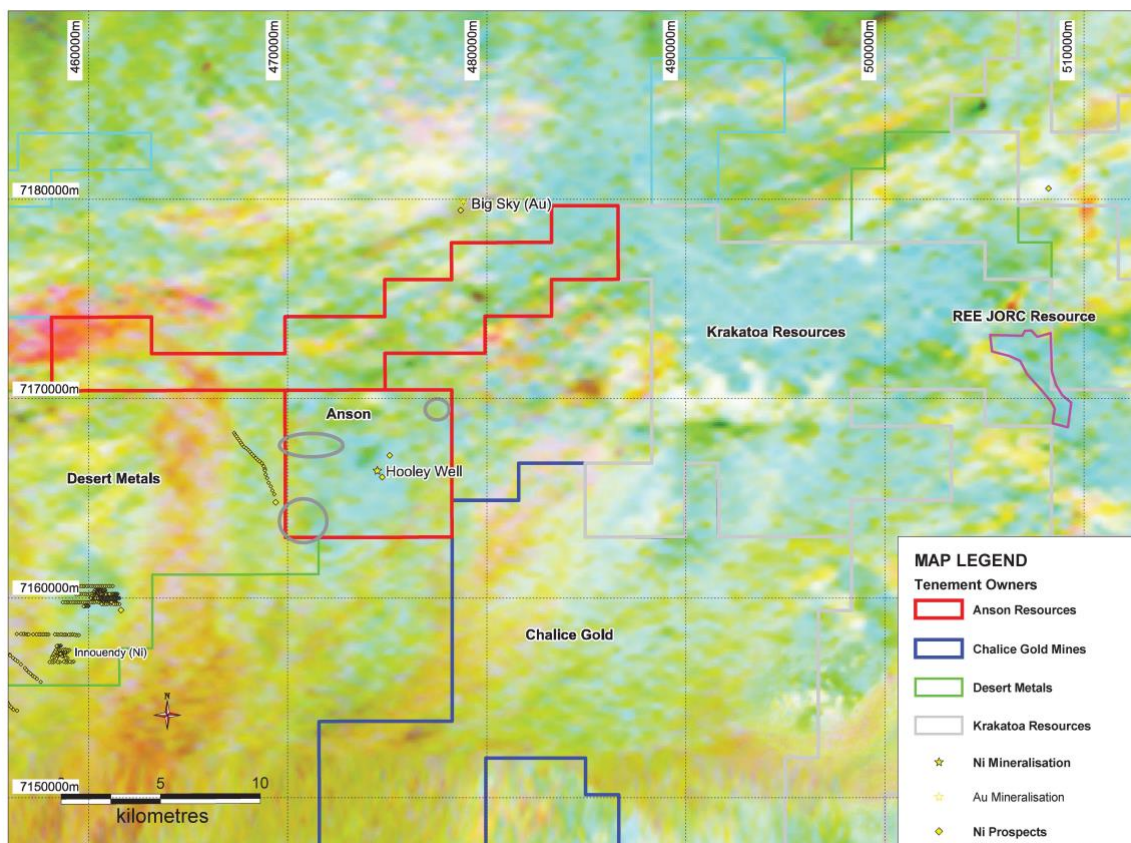
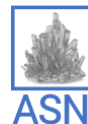


Figure 12: the Hooley Well tenements E9/2218 and E9/2219A ternary image showing a similar anomalous signature to that at Krakatoa's REE JORC resource.

Corporate

Appointment of Executives

Post the December 2022 quarter, the Company announced three key appointments to



strengthen its executive team as it continues development of its Paradox Lithium Project and advances its portfolio of projects.

- Experienced chemical engineer and project manager Navin Gupta appointed Project Director for Anson's US subsidiary, A1 Lithium Inc.
- Financial professional Mathew Beattie appointed Chief Financial Officer for Anson Resources; and
- Highly experienced financial services and commodities sector professional Timothy Murray appointed Anson Resources' Chief Operating Officer.

For details of appointment including the background and experience of the executives please refer to ASX announcement dated 16 January 2023.

Exercise of options raises \$72,366

During the quarter, the Company received valid exercise of 1,746,233 unlisted options at various prices, resulting the issue of 1,746,233 ordinary shares. The Company raised a total of \$72,366 from the exercise of options.

Issue of Shares to Directors and Contractor

During the quarter, the Company issued 2,360,921 shares to directors and a contractor. Resolutions to issue shares to directors were approved by shareholder at the Annual General Meeting on 25 November 2022.

Expenditure during the quarter:

The attached Appendix 5B details the expenditure during the quarter. Administration and corporate costs were \$405k. In accordance with Listing Rule 5.3.1, the Company reports that there was \$2.445 million exploration and evaluation costs which were predominantly expended on the Paradox Project. Project development cost for the quarter was \$46k. Payments to related parties at section 6.1 of the Appendix 5B of \$1.09 million relate to director fees, salaries, superannuation and consulting fees.

This report has been authorised for release by the Executive Chairman and CEO.

For further information please contact:

Bruce Richardson
Executive Chairman and CEO

E: info@ansonresources.com

Ph: +61 478 491 355

www.ansonresources.com
Follow us on Twitter @anson_ir

Media and Investor Relations
James Moses, Mandate Corporate

E: james@mandatecorporate.com.au

Ph: +61 420 991 574

Forward Looking Statements: Statements regarding plans with respect to Anson's mineral projects are forward looking statements. There can be no assurance that Anson's plans for development of its projects will proceed as expected and there can be no assurance that Anson will be able to confirm the presence of mineral deposits, that mineralisation may prove to be economic or that a project will be developed.

Competent Person's Statement 1: The information in this report that relates to exploration results; exploration target and geology is based on information compiled and/or reviewed by Mr Greg Knox, a

member in good standing of the Australasian Institute of Mining and Metallurgy. Mr Knox is a geologist who has sufficient experience which is relevant to the style of mineralisation under consideration and to the activity being undertaken to qualify as a "Competent Person", as defined in the 2012 Edition of the Australasian Code for Reporting of Exploration Results, Mineral Resources and Ore Reserves and consents to the inclusion in this report of the matters based on information in the form and context in which they appear. Mr Knox has reviewed and validated the metallurgical data and consents to the inclusion in this Announcement of this information in the form and context in which it appears. Mr Knox is a director of Anson Resources Limited and a consultant to Anson.

Competent Person's Statement 2: The information contained in this ASX release relating to Exploration Results and Mineral Resource Estimates has been prepared by Mr Richard Maddocks, MSc in Mineral Economics, BSc in Geology and Grad Dip in Applied Finance. Mr Maddocks is a Fellow of the Australasian Institute of Mining and Metallurgy (111714) with over 30 years of experience. Mr Maddocks has sufficient experience that is relevant to the style of mineralisation and type of deposit under consideration and to the activity being undertaken to qualify as a competent person as defined in the 2012 edition of the Australasian Code for Reporting of Exploration Results, Mineral Resources and Ore Reserves.

Mr Maddocks is an independent consultant to Anson Resources Ltd. Mr Maddocks consents to the inclusion in this announcement of this information in the form and context in which it appears. The information in this announcement is an accurate representation of the available data from exploration at the Paradox Lithium Project.

Competent Persons Statement 3: The information in this announcement that relates to the Exploration Results on the Yellow Cat project is based on information compiled and fairly represented by Matthew Hartmann. Mr. Hartmann is a Principal Consultant with SRK Consulting (U.S) Inc. with over 20 years of experience in mineral exploration and project evaluation. Mr. Hartmann is a Member of the Australasian Institute of Mining and Metallurgy (318271) and a Registered Member of the Society of Mining, Metallurgy and Exploration (4170350RM). Mr Hartmann has sufficient experience relevant to the style of mineralisation and type of deposit under consideration, and to the activity which has been undertaken in 2019 and 2020, to qualify as a Competent Person as defined in the 2012 Edition of the Joint Ore Reserves Committee (JORC) Australasian Code for Reporting of exploration results, Mineral Resources and Ore Reserves. Mr Hartmann provides his consent to the inclusion in this report of the matter based on this information in the form and context in which it appears.

Information is extracted from reports entitled 'Anson Obtains a Lithium Grade of 235ppm at Long Canyon No 2' created on 1 April 2019, 'Anson Estimates Exploration Target For Additional Zones' created on 12 June 2019, 'Anson Estimates Maiden JORC Mineral Resource' created on 17 June 2019, 'Anson Re-enters Skyline Well to Increase Br-Li Resource' created on 19 September 2019, 'Anson Confirms Li, Br for Additional Clastic Zones' created on 23 October 2019 and all are available to view on the ASX website under the ticker code ASN. Anson confirms that it is not aware of any new information or data that materially affects the information included in the original market announcement and, in the case of estimates of Mineral Resources or Ore Reserves, that all material assumptions and technical parameters underpinning the estimates in the relevant market announcement continue to apply and have not materially changed. Anson confirms that the form and context in which the Competent Person's findings are presented have not been materially modified from the original market announcement.

APPENDIX A: INTERESTS IN MINING TENEMENTS AS AT 31 DECEMBER 2022

Project	Lease	Commodity	Holder	Locality	Status
Ajana	E66/89	Graphite and base metals	Rhodes Resources Pty Ltd	Western Australia	Granted
	E66/94	Graphite and base metals	Anson Resources Limited	Western Australia	Granted
Hooley Well	E9/2218	Cobalt, nickel	Western Cobalt Pty Ltd	Western Australia	Granted
	E9/2219	Cobalt, nickel	Anson Resources Limited	Western Australia	Granted
	E9/2462	Cobalt, nickel	Anson Resources Limited	Western Australia	Granted
The Bull	E70/5420	Ni-Cu-PGE	State Exploration Pty Ltd	Western Australia	Granted
	ELA70/5619	Ni-Cu-PGE	Anson Resources Limited	Western Australia	Under Application
Paradox Brine	87 Placer Claims	Lithium	(i)	Utah, USA	(i)
Paradox Brine	155 Placer Claims	Lithium	A1 Lithium Inc	Utah, USA	(ii)
Paradox Brine	71 Placer Claims	Lithium	A1 Lithium Inc	Utah, USA	(iii)
Paradox Brine	191 Placer Claims	Lithium	A1 Lithium Inc	Utah, USA	(iv)
Paradox Brine	66 Placer Claims	Lithium	A1 Lithium Inc	Utah, USA	(v)
Paradox Brine	178 Placer Claims	Lithium	A1 Lithium Inc	Utah, USA	(vi)
Paradox Brine	334 Placer Claims	Lithium	A1 Lithium Inc	Utah, USA	(vii)
Paradox Brine	228 Placer Claims	Lithium	A1 Lithium Inc	Utah, USA	(viii)
Paradox Brine	536 Placer Claims	Lithium	A1 Lithium Inc	Utah, USA	(ix)
Paradox Brine	3 Potash & Mineral Lease	Lithium	A1 Lithium Inc	Utah, USA	(x)
Paradox Brine	2 Industrial Permit	Lithium	A1 Lithium Inc	Utah, USA	(xi)

Yellow Cat Project	151 Lode Claims	Vanadium and Uranium	Blackstone Resources Inc	Utah, USA	(xii)
Green River Lithium	548 Placer Claims	Lithium	Blackstone Minerals Inc	Utah, USA	(xiii)
Green River Lithium	307 Placer Claims	Lithium	Blackstone Minerals Inc	Utah, USA	(xiv)
Green River Lithium	396 Placer Claims	Lithium	Blackstone Minerals Inc	Utah, USA	(xv)

- (i) Anson currently holds a 50% interest in 87 Placer Claims in Utah, USA (the ULI Project).

At the date of this Report, the holder of the remaining 50% interest had not completed the formalities to transfer the claims to the joint venture company (Paradox Lithium LLC) established for this purpose. Further, achievement of the milestones which increased Anson's interest to 50% may be subject to finalisation under the terms of the agreement to earn-into the ULI Project

These claims are referred to as ULI-13, ULI-14, ULI-14S, ULI-15, ULI15S, ULI16, ULI16S, ULI-30, ULI-31, ULI-32, ULI-33, ULI-34, ULI-35, ULI-36, ULI-37, ULI-38, ULI-39, ULI-40, ULI-41, ULI-42, ULI-43, ULI-54, ULI-55, ULI-56, ULI-57, ULI-58, ULI-59, ULI-60, ULI-60-E, ULI-61-E, ULI-62-E, ULI-63, ULI-64, ULI-64 N, ULI-65, ULI-65 W, ULI-66, ULI-67, ULI-68, ULI-69, ULI-70, ULI-71, ULI-77, ULI-78, ULI-79, ULI-80, ULI-81, ULI-81 W, ULI-82, ULI-83, ULI-84, ULI-85, ULI-86, ULI-87, ULI-88, ULI-89, ULI-90, ULI-91, ULI-92, ULI-93, ULI-93 E, ULI-94, ULI-95, ULI-96, ULI-97, ULI-97 E, ULI-98, ULI-98 N, ULI-99, ULI-100, ULI-101, ULI-102, ULI-102 N, ULI-103, ULI-104, ULI-105, ULI-105 N, ULI-106, ULI-107, ULI-107 N, ULI-108, ULI-109, ULI-110, ULI-111, ULI-112, ULI-113 and ULI-114.

- (ii) Anson currently holds a 100% interest in 155 Placer Claims in Utah, USA. Under the terms of an earn-in agreement for the ULI Project, these placer claims may be subject to area of interest provisions of the agreement to earn-into the ULI Project.

These claims are referred to as ULI201, ULI202, ULI203, ULI204, ULI205, ULI206, ULI207, ULI208, ULI209, ULI210, ULI211, ULI212, ULI213, ULI214, ULI215, ULI216, ULI217, ULI218, ULI219, ULI220, ULI225, ULI226, ULI227, ULI228, ULI229, ULI230, ULI231, ULI232, ULI233, ULI234, ULI235, ULI236, ULI237, ULI238, ULI239, ULI240, ULI241, ULI242, ULI243, ULI244, ULI245, ULI249, ULI250, ULI251, ULI252, ULI253, ULI254, ULI255, ULI256, ULI257, ULI258, ULI259, ULI260, ULI261, ULI262, ULI263, ULI264, ULI265, ULI266, ULI267, ULI268, ULI269, ULI273, ULI274, ULI275, ULI276, ULI277, ULI278, ULI279, ULI280, ULI281, ULI282, ULI283, ULI284, ULI285, ULI286, ULI287, ULI288, ULI289, ULI293, ULI294, ULI295, ULI296, ULI297, ULI298, ULI299, ULI300, ULI301, ULI302, ULI303, ULI304, ULI305, ULI306, ULI307, ULI311, ULI312, ULI313, ULI314, ULI315, ULI316, ULI317, ULI318, ULI319, ULI320, ULI321, ULI322, ULI323, ULI324, ULI325, ULI326, ULI330, ULI331, ULI332, ULI333, ULI334, ULI335, ULI336, ULI337, ULI338, ULI339, ULI340, ULI341, ULI342, ULI343, ULI344, ULI345, ULI350, ULI351, ULI352, ULI353, ULI354, ULI355, ULI356, ULI357, ULI358, ULI359, ULI360, ULI361, ULI362, ULI369, ULI370, ULI371, ULI372, ULI373, ULI374, ULI375, ULI376, ULI379, ULI380, ULI381, ULI382, ULI383, ULI384, ULI385, ULI386,

- (iii) Anson currently holds a 100% interest in 71 Placer Claims in Utah, USA. Under the terms of an earn-in agreement for the ULI Project, these placer claims may be subject to area of interest provisions of the agreement to earn-into the ULI Project.

These claims are referred to as ULI501, ULI525, ULI549, ULI573 ULI597, ULI621, ULI645, ULI646, ULI647, ULI648, ULI653, ULI654, ULI655, ULI656, ULI661, ULI662, ULI663, ULI664, ULI665, ULI666, ULI667, ULI668, ULI669, ULI670, ULI671, ULI672, ULI673, ULI674, ULI675, ULI676, ULI677, ULI678, ULI679, ULI680, ULI681, ULI682, ULI683, ULI688, ULI689, ULI690, ULI691, ULI696, ULI697, ULI698, ULI699, ULI700, ULI701, ULI702, ULI703, ULI704, ULI705, ULI706, ULI707, ULI708, ULI709, ULI710, ULI711, ULI712, ULI713, ULI714, ULI715, ULI716, ULI717,

ULI718, ULI719, ULI720, ULI721, ULI722, ULI723, ULI724, and ULI725.

(iv) Anson currently holds a 100% interest in 193 Placer Claims in Utah, USA.

These claims are referred to as, ULI649, ULI650, ULI651, ULI652, ULI 652W, ULI657, ULI658, ULI659, ULI660, ULI660W, ULI726, ULI727, ULI728, ULI729, ULI730, ULI731, ULI732, ULI733, ULI734, ULI735, ULI736, ULI737, ULI738, ULI739, ULI740, ULI741, ULI742, ULI743, ULI744, ULI745, ULI746, ULI747, ULI748, ULI749, ULI750, ULI751, ULI752, ULI753, ULI754, ULI755, ULI756, ULI757, ULI758, ULI759, ULI760, ULI761, ULI762, ULI763, ULI764, ULI765, ULI766, ULI767, ULI768, ULI769, ULI770, ULI771, ULI772, ULI773, ULI774, ULI775, ULI776, ULI777, ULI778, ULI779, ULI780, ULI781, ULI782, ULI783, ULI784, ULI785, ULI786, ULI787, ULI788, ULI789, ULI790, ULI791, ULI792, ULI793, ULI794, ULI795, ULI844, ULI845, ULI846, ULI847, ULI848, ULI849, ULI850, ULI851, ULI852, ULI853, ULI854, ULI855, ULI856, ULI857, ULI858, ULI859, ULI860, ULI861, ULI862, ULI863, ULI864, ULI865, ULI866, ULI867, ULI868, ULI869, ULI870, ULI871, ULI872, ULI873, ULI874, ULI875, ULI876, ULI877, ULI878, ULI879, ULI880, ULI881, ULI882, ULI883, ULI884, ULI885, ULI886, ULI887, ULI888, ULI889, ULI890, ULI891, ULI892, ULI893, ULI894, ULI895, ULI896, ULI897, ULI898, ULI899, ULI900, ULI901, ULI902, ULI903, ULI904, ULI905, ULI906, ULI907, ULI908, ULI909, ULI910, ULI911, ULI912, ULI913, ULI914, ULI915, ULI916, ULI917, ULI918, ULI919, ULI920, ULI921, ULI922, ULI923, ULI924, ULI925, ULI926, ULI927, ULI928, ULI929, ULI930, ULI931, ULI932, ULI933, ULI934, ULI935, ULI936, ULI937, ULI938, ULI939, ULI940, ULI941, ULI942, ULI943, ULI944, ULI945, ULI946, ULI947, ULI948, ULI949, ULI950, ULI951, ULI952, ULI953 and ULI954.

(v) Anson currently holds a 100% interest in 66 Placer Claims in Utah, USA.

These claims are referred to as CLOUD001, CLOUD002, CLOUD003, CLOUD004, CLOUD005, CLOUD006, CLOUD007, CLOUD008, CLOUD009, CLOUD010, CLOUD011, CLOUD012, CLOUD013, CLOUD014, CLOUD015, CLOUD016, CLOUD017, CLOUD018, CLOUD019, CLOUD020, CLOUD021, CLOUD022, CLOUD023, CLOUD024, CLOUD025, CLOUD026, CLOUD027, CLOUD028, CLOUD029, CLOUD030, CLOUD031, CLOUD032, CLOUD033, CLOUD034, CLOUD035, CLOUD036, CLOUD037, CLOUD038, CLOUD039, CLOUD040, CLOUD041, CLOUD042, CLOUD043, CLOUD044, CLOUD045, CLOUD046, CLOUD047, CLOUD048, CLOUD049, CLOUD050, CLOUD051, CLOUD052, CLOUD053, CLOUD054, CLOUD055, CLOUD056, CLOUD057, CLOUD058, CLOUD059, CLOUD060, CLOUD061, CLOUD062, CLOUD063, CLOUD064, CLOUD065 and CLOUD066

(vi) Anson currently holds a 100% interest in 178 Placer Claims in Utah, USA.

These claims are referred to as CANE001, CANE002, CANE003, CANE004, CANE005, CANE006, CANE007, CANE008, CANE009, CANE010, CANE011, CANE012, CANE013, CANE014, CANE015, CANE016, CANE017, CANE018, CANE019, CANE020, CANE021, CANE022, CANE023, CANE024, CANE025, CANE026, CANE027, CANE028, CANE029, CANE030, CANE031, CANE032, CANE033, CANE034, CANE035, CANE036, CANE037, CANE038, CANE039, CANE040, CANE041, CANE042, CANE043, CANE044, CANE045, CANE046, CANE047, CANE048, CANE049, CANE050, CANE051, CANE052, CANE053, CANE054, CANE055, CANE056, CANE057, CANE058, CANE059, CANE060, CANE061, CANE062, CANE063, CANE064, CANE065, CANE066, CANE067, CANE068, CANE069, CANE070, CANE071, CANE072, CANE073, CANE074, CANE075, CANE076, CANE077, CANE078, CANE079, CANE080, CANE081, CANE082, CANE083, CANE084, CANE085, CANE086, CANE087, CANE088, CANE089, CANE090, CANE091, CANE092, CANE093, CANE094, CANE095, CANE096, CANE097, CANE098, CANE099, CANE100, CANE101, CANE102, CANE103, CANE104, CANE105, CANE106, CANE107, CANE108, CANE109, CANE110, CANE111, CANE112, CANE113, CANE114, CANE115, CANE116, CANE117, CANE118, CANE119, CANE120, CANE121, CANE122, CANE123, CANE124, CANE125, CANE126, CANE127, CANE128, CANE129, CANE130, CANE131, CANE132, CANE133, CANE134, CANE135, CANE136, CANE137, CANE138, CANE139, CANE140, CANE141, CANE142, CANE143, CANE144, CANE145, CANE146, CANE147, CANE148, CANE149, CANE150, CANE151, CANE152, CANE153, CANE154, CANE155, CANE156, CANE157, CANE158, CANE159, CANE160, CANE161, CANE162, CANE163, CANE164, CANE165, CANE166, CANE167, CANE168, CANE169, CANE170, CANE171, CANE172, CANE173, CANE314, CANE175, CANE176, CANE177, and CANE178.

- (vii) Anson currently holds a 100% interest in 334 Placer Claims in Utah, USA. Under the terms of the earn-in agreement referred to in point (i) above for the ULI Project, 88 of these placer claims may be subject to area of interest provisions of the agreement to earn-into the ULI Project.

These claims are referred to as CLOUDIII001, CLOUDIII002, CLOUDIII003, CLOUDIII004, CLOUDIII005, CLOUDIII006, CLOUDIII007, CLOUDIII008, CLOUDIII009, CLOUDIII010, CLOUDIII011, CLOUDIII012, CLOUDIII013, CLOUDIII014, CLOUDIII015, CLOUDIII016, CLOUDIII017, CLOUDIII018, CLOUDIII019, CLOUDIII020, CLOUDIII021, CLOUDIII022, CLOUDIII023, CLOUDIII024, CLOUDIII025, CLOUDIII026, CLOUDIII027, CLOUDIII028, CLOUDIII029, CLOUDIII030, CLOUDIII031, CLOUDIII032, CLOUDIII033, CLOUDIII034, CLOUDIII035, CLOUDIII036, CLOUDIII037, CLOUDIII038, CLOUDIII039, CLOUDIII040, CLOUDIII041, CLOUDIII042, CLOUDIII043, CLOUDIII044, CLOUDIII045, CLOUDIII046, CLOUDIII047, CLOUDIII048, CLOUDIII049, CLOUDIII050, CLOUDIII051, CLOUDIII052, CLOUDIII053, CLOUDIII054, CLOUDIII055, CLOUDIII056, CLOUDIII057, CLOUDIII058, CLOUDIII059, CLOUDIII060, CLOUDIII061, CLOUDIII062, CLOUDIII063, CLOUDIII064, CLOUDIII065, CLOUDIII066, CLOUDIII067, CLOUDIII068, CLOUDIII069, CLOUDIII070, CLOUDIII071, CLOUDIII072, CLOUDIII073, CLOUDIII074, CLOUDIII075, CLOUDIII076, CLOUDIII077, CLOUDIII078, CLOUDIII079, CLOUDIII080, CLOUDIII081, CLOUDIII082, CLOUDIII083, CLOUDIII084, CLOUDIII085, CLOUDIII086, CLOUDIII087, CLOUDIII088, CLOUDIII089, CLOUDIII090, CLOUDIII091, CLOUDIII092, CLOUDIII093, CLOUDIII094, CLOUDIII095, CLOUDIII096, CLOUDIII097, CLOUDIII098, CLOUDIII099, CLOUDIII100, CLOUDIII101, CLOUDIII102, CLOUDIII103, CLOUDIII104, CLOUDIII105, CLOUDIII106, CLOUDIII107, CLOUDIII108, CLOUDIII109, CLOUDIII110, CLOUDIII111, CLOUDIII112, CLOUDIII113, CLOUDIII114, CLOUDIII115, CLOUDIII116, CLOUDIII117, CLOUDIII118, CLOUDIII119, CLOUDIII120, CLOUDIII121, CLOUDIII122, CLOUDIII123, CLOUDIII124, CLOUDIII125, CLOUDIII126, CLOUDIII127, CLOUDIII128, CLOUDIII129, CLOUDIII130, CLOUDIII131, CLOUDIII132, CLOUDIII133, CLOUDIII134, CLOUDIII135, CLOUDIII136, CLOUDIII137, CLOUDIII138, CLOUDIII139, CLOUDIII140, CLOUDIII141, CLOUDIII142, CLOUDIII143, CLOUDIII144, CLOUDIII145, CLOUDIII146, CLOUDIII147, CLOUDIII148, CLOUDIII149, CLOUDIII150, CLOUDIII151, CLOUDIII152, CLOUDIII153, CLOUDIII154, CLOUDIII155, CLOUDIII156, CLOUDIII157, CLOUDIII158, CLOUDIII159, CLOUDIII160, CLOUDIII161, CLOUDIII162, CLOUDIII163, CLOUDIII164, CLOUDIII165, CLOUDIII166, CLOUDIII167, CLOUDIII168, CLOUDIII169, CLOUDIII170, CLOUDIII171, CLOUDIII172, CLOUDIII173, CLOUDIII174, CLOUDIII175, CLOUDIII176, CLOUDIII177, CLOUDIII178, CLOUDIII179, CLOUDIII180, CLOUDIII181, CLOUDIII182, CLOUDIII183, CLOUDIII184, CLOUDIII185, CLOUDIII186, CLOUDIII187, CLOUDIII188, CLOUDIII189, CLOUDIII190, CLOUDIII191, CLOUDIII192, CLOUDIII193, CLOUDIII194, CLOUDIII195, CLOUDIII196, CLOUDIII197, CLOUDIII198, CLOUDIII199, CLOUDIII200, CLOUDIII201, CLOUDIII202, CLOUDIII203, CLOUDIII204, CLOUDIII205, CLOUDIII206, CLOUDIII207, CLOUDIII208, CLOUDIII209, CLOUDIII210, CLOUDIII211, CLOUDIII212, CLOUDIII213, CLOUDIII214, CLOUDIII215, CLOUDIII216, CLOUDIII217, CLOUDIII218, CLOUDIII219, CLOUDIII220, CLOUDIII221, CLOUDIII222, CLOUDIII223, CLOUDIII224, CLOUDIII225, CLOUDIII226, CLOUDIII227, CLOUDIII228, CLOUDIII229, CLOUDIII230, CLOUDIII231, CLOUDIII232, CLOUDIII233, CLOUDIII234, CLOUDIII235, CLOUDIII236, CLOUDIII237, CLOUDIII238, CLOUDIII239, CLOUDIII240, CLOUDIII241, CLOUDIII242, CLOUDIII243, CLOUDIII244, CLOUDIII245, CLOUDIII246, CLOUDIII247, CLOUDIII248, CLOUDIII249, CLOUDIII250, CLOUDIII251, CLOUDIII252, CLOUDIII253, CLOUDIII254, CLOUDIII255, CLOUDIII256, CLOUDIII257, CLOUDIII258, CLOUDIII259, CLOUDIII260, CLOUDIII261, CLOUDIII262, CLOUDIII263, CLOUDIII264, CLOUDIII265, CLOUDIII266, CLOUDIII267, CLOUDIII268, CLOUDIII269, CLOUDIII270, CLOUDIII271, CLOUDIII272, CLOUDIII273, CLOUDIII274, CLOUDIII275, CLOUDIII276, CLOUDIII277, CLOUDIII278, CLOUDIII279, CLOUDIII280, CLOUDIII281, CLOUDIII282, CLOUDIII283, CLOUDIII284, CLOUDIII285, CLOUDIII286, CLOUDIII287, CLOUDIII288, CLOUDIII289, CLOUDIII290, CLOUDIII291, CLOUDIII292, CLOUDIII293, CLOUDIII294, CLOUDIII295, CLOUDIII296, CLOUDIII297, CLOUDIII298, CLOUDIII299, CLOUDIII300, CLOUDIII301, CLOUDIII302, CLOUDIII303, CLOUDIII304, CLOUDIII305, CLOUDIII306, CLOUDIII307, CLOUDIII308, CLOUDIII309, CLOUDIII310, CLOUDIII311, CLOUDIII312, CLOUDIII313, CLOUDIII314, CLOUDIII315, CLOUDIII316, CLOUDIII317, CLOUDIII318, CLOUDIII319, CLOUDIII320, CLOUDIII321, CLOUDIII322,

CLOUDIII323, CLOUDIII324, CLOUDIII325, CLOUDIII326, CLOUDIII327, CLOUDIII328,
CLOUDIII329, CLOUDIII330, CLOUDIII331, CLOUDIII332, CLOUDIII333 and CLOUDIII334.

(viii) Anson currently holds a 100% interest in 228 Placer Claims in Utah, USA.

These claims are referred to ULI2 001, ULI2 002, ULI2 003, ULI2 004, ULI2 005, ULI2 006, ULI2 007, ULI2 008, ULI2 009, ULI2 010, ULI2 011, ULI2 012, ULI2 013, ULI2 014, ULI2 015, ULI2 016, ULI2 017, ULI2 018, ULI2 019, ULI2 020, ULI2 021, ULI2 022, ULI2 023, ULI2 024, ULI2 025, ULI2 026, ULI2 027, ULI2 028, ULI2 029, ULI2 030, ULI2 031, ULI2 032, ULI2 033, ULI2 034, ULI2 035, ULI2 036, ULI2 037, ULI2 038, ULI2 039, ULI2 040, ULI2 041, ULI2 042, ULI2 043, ULI2 044, ULI2 045, ULI2 046, ULI2 047, ULI2 048, ULI2 049, ULI2 050, ULI2 051, ULI2 052, ULI2 053, ULI2 054, ULI2 055, ULI2 056, ULI2 057, ULI2 058, ULI2 059, ULI2 060, ULI2 061, ULI2 062, ULI2 063, ULI2 064, ULI2 065, ULI2 066, ULI2 067, ULI2 068, ULI2 069, ULI2 070, ULI2 071, ULI2 072, ULI2 073, ULI2 074, ULI2 075, ULI2 076, ULI2 077, ULI2 078, ULI2 079, ULI2 080, ULI2 081, ULI2 082, ULI2 083, ULI2 084, ULI2 085, ULI2 086, ULI2 087, ULI2 088, ULI2 089, ULI2 090, ULI2 091, ULI2 092, ULI2 093, ULI2 094, ULI2 095, ULI2 096, ULI2 097, ULI2 098, ULI2 099, ULI2 100, ULI2 101, ULI2 102, ULI2 103, ULI2 104, ULI2 105, ULI2 106, ULI2 107, ULI2 108, ULI2 109, ULI2 110, ULI2 111, ULI2 112, ULI2 113, ULI2 114, ULI2 115, ULI2 116, ULI2 117, ULI2 118, ULI2 119, ULI2 120, ULI2 121, ULI2 122, ULI2 123, ULI2 124, ULI2 125, ULI2 126, ULI2 127, ULI2 128, ULI2 129, ULI2 130, ULI2 131, ULI2 132, ULI2 133, ULI2 134, ULI2 135, ULI2 136, ULI2 137, ULI2 138, ULI2 139, ULI2 140, ULI2 141, ULI2 142, ULI2 143, ULI2 144, ULI2 145, ULI2 146, ULI2 147, ULI2 148, ULI2 149, ULI2 150, ULI2 151, ULI2 152, ULI2 153, ULI2 154, ULI2 155, ULI2 156, ULI2 157, ULI2 158, ULI2 159, ULI2 160, ULI2 161, ULI2 162, ULI2 163, ULI2 164, ULI2 165, ULI2 166, ULI2 167, ULI2 168, ULI2 169, ULI2 170, ULI2 171, ULI2 172, ULI2 173, ULI2 174, ULI2 175, ULI2 176, ULI2 177, ULI2 178, ULI2 179, ULI2 180, ULI2 181, ULI2 182, ULI2 183, ULI2 184, ULI2 185, ULI2 186, ULI2 187, ULI2 188, ULI2 189, ULI2 190, ULI2 191, ULI2 192, ULI2 193, ULI2 194, ULI2 195, ULI2 196, ULI2 197, ULI2 198, ULI2 199, ULI2 200, ULI2 201, ULI2 202, ULI2 203, ULI2 204, ULI2 205, ULI2 206, ULI2 207, ULI2 208, ULI2 209, ULI2 210, ULI2 211, ULI2 212, ULI2 213, ULI2 214, ULI2 215, ULI2 216, ULI2 217, ULI2 218, ULI2 219, ULI2 220, ULI2 221, ULI2 222, ULI2 223, ULI2 224, ULI2 225, ULI2 226, ULI2 227 and ULI2 228.

(ix) Anson currently holds a 100% interest in 536 Placer Claims in Utah, USA.

These claims are referred to as MP1, MP2, MP3, MP4, MP5, MP6, MP7, MP8, MP9, MP10, MP11, MP12, MP13, MP14, MP15, MP16, MP17, MP18, MP19, MP20, MP21, MP22, MP23, MP24, MP25, MP26, MP27, MP28, MP29, MP30, MP31, MP32, MP33, MP34, MP35, MP36, MP37, MP38, MP39, MP40, MP41, MP42, MP43, MP44, MP45, MP46, MP47, MP48, MP49, MP50, MP51, MP52, MP53, MP54, MP55, MP56, MP57, MP58, MP59, MP60, MP61, MP62, MP63, MP64, MP65, MP66, MP67, MP68, MP69, MP70, MP71, MP72, MP73, MP74, MP75, MP76, MP77, MP78, MP79, MP80, MP81, MP82, MP83, MP84, MP85, MP86, MP87, MP88, MP89, MP90, MP91, MP92, MP93, MP94, MP95, MP96, MP97, MP98, MP99, MP100, MP101, MP102, MP103, MP104, MP105, MP106, MP107, MP108, MP109, MP110, MP111, MP112, MP113, MP114, MP115, MP116, MP117, MP118, MP119, MP120, MP121, MP122, MP123, MP124, MP125, MP126, MP127, MP128, MP129, MP130, MP131, MP132, MP133, MP134, MP135, MP136, MP137, MP138, MP139, MP140, MP141, MP142, MP143, MP144, MP145, MP146, MP147, MP148, MP149, MP150, MP151, MP152, MP153, MP154, MP155, MP156, MP157, MP158, MP159, MP160, MP161, MP162, MP163, MP164, MP165, MP166, MP167, MP168, MP169, MP170, MP171, MP172, MP173, MP174, MP175, MP176, MP177, MP178, MP179, MP180, MP181, MP182, MP183, MP184, MP185, MP186, MP187, MP188, MP189, MP190, MP191, MP192, MP193, MP194, MP195, MP196, MP197, MP198, MP199, MP200, MP201, MP202, MP203, MP204, MP205, MP206, MP207, MP208, MP209, MP210, MP211, MP212, MP213, MP214, MP215, MP216, MP217, MP218, MP219, MP220, MP221, MP222, MP223, MP224, MP225, MP226, MP227, MP228, MP229, MP230, MP231, MP232, MP233, MP234, MP235, MP236, MP237, MP238, MP239, MP240, MP241, MP242, MP243, MP244, MP245, MP246, MP247, MP248, MP249, MP250, MP251, MP252, MP253, MP254, MP255, MP256, MP257, MP258, MP259, MP260, MP261, MP262, MP263, MP264, MP265, MP266, MP267, MP268, MP269, MP270, MP271, MP272, MP273, MP274, MP275, MP276, MP277, MP278, MP279, MP280, MP281, MP282, MP283, MP284, MP285, MP286, MP287, MP288, MP289, MP290, MP291, MP292, MP293, MP294, MP295, MP296, MP297, MP298, MP299, MP300, MP301, MP302, MP303, MP304, MP305, MP306, MP307, MP308, MP309, MP310, MP311, MP312, MP313, MP314, MP315, MP316, MP317, MP318, MP319, MP320, MP321, MP322, MP323, MP324, MP325, MP326, MP327, MP328, MP329, MP330, MP331, MP332, MP333, MP334, MP335, MP336,

MP337, MP338, MP339, MP340, MP341, MP342, MP343, MP344, MP345, MP346, MP347, MP348, MP349, MP350, MP351, MP352, MP353, MP354, MP355, MP356, MP357, MP358, MP359, MP360, MP361, MP362, MP363, MP364, MP365, MP366, MP367, MP368, MP369, MP370, MP371, MP372, MP373, MP374, MP375, MP376, MP377, MP378, MP379, MP380, MP381, MP382, MP383, MP384, MP385, MP386, MP387, MP388, MP389, MP390, MP391, MP392, MP393, MP394, MP395, MP396, MP397, MP398, MP399, MP400, MP401, MP402, MP403, MP404, MP405, MP406, MP407, MP408, MP409, MP410, MP411, MP412, MP413, MP414, MP415, MP416, MP417, MP418, MP419, MP420, MP421, MP422, MP423, MP424, MP425, MP426, MP427, MP428, MP429, MP430, MP431, MP432, MP433, MP434, MP435, MP436, MP437, MP438, MP439, MP440, MP441, MP442, MP443, MP444, MP445, MP446, MP447, MP448, MP449, MP450, MP451, MP452, MP453, MP454, MP455, MP456, MP457, MP458, MP459, MP460, MP461, MP462, MP463, MP464, MP465, MP466, MP467, MP468, MP469, MP470, MP471, MP472, MP473, MP474, MP475, MP476, MP477, MP478, MP479, MP480, MP481, MP482, MP483, MP484, MP485, MP486, MP487, MP488, MP489, MP490, MP491, MP492, MP493, MP494, MP495, MP496, MP497, MP498, MP499, MP500, MP501, MP502, MP503, MP504, MP505, MP506, MP507, MP508, MP509, MP510, MP511, MP512, MP513, MP514, MP515, MP516, MP517, MP518, MP519, MP520, MP521, MP522, MP523, MP524, MP525, MP526, MP527, MP528, MP529, MP530, MP531, MP532, MP533, MP534, MP535 and MP536.

(x) Anson currently holds a 100% interest in 3 SITLA Potash and Mineral Salts Lease in Utah, USA. These claims are referred to as ML-53853-OBA, ML-54099-OBA, and ML-54253-OBA.

(xi) Anson currently holds a 100% interest in 2 SITLA Industrial Permit in Utah, USA. These claims are referred to as SULA1872 and 1930.

(xii) Anson currently holds a 100% interest in 151 lode claims. These claims are referred to as YELLOWCAT002, YELLOWCAT011, YELLOWCAT012, YELLOWCAT013, YELLOWCAT014, YELLOWCAT015, YELLOWCAT017, YELLOWCAT018, YELLOWCAT019, YELLOWCAT020, YELLOWCAT021, YELLOWCAT022, YELLOWCAT023, YELLOWCAT024, YELLOWCAT025, YELLOWCAT039, YELLOWCAT041, YELLOWCAT042, YELLOWCAT043, YELLOWCAT044, YELLOWCAT045, YELLOWCAT046, YELLOWCAT047, YELLOWCAT048, YELLOWCAT049, YELLOWCAT050, YELLOWCAT051, YELLOWCAT052, YELLOWCAT053, YELLOWCAT054, YELLOWCAT055, YELLOWCAT056, YELLOWCAT057, YELLOWCAT058, YELLOWCAT059, YELLOWCAT060, YELLOWCAT061, YELLOWCAT073, YELLOWCAT074, YELLOWCAT076, YELLOWCAT078, YELLOWCAT080, YELLOWCAT082, YELLOWCAT083, YELLOWCAT084, YELLOWCAT085, YELLOWCAT120, YELLOWCAT121, YELLOWCAT122, YELLOWCAT123, YELLOWCAT124, YELLOWCAT125, YELLOWCAT126, YELLOWCAT127, YELLOWCAT128, YELLOWCAT129, YELLOWCAT130, YELLOWCAT131, YELLOWCAT132, YELLOWCAT133, YELLOWCAT162, YELLOWCAT163, YELLOWCAT164, YELLOWCAT165, YELLOWCAT166, YELLOWCAT167, YELLOWCAT168, YELLOWCAT169, YELLOWCAT170, YELLOWCAT171, YELLOWCAT172, YELLOWCAT173, YELLOWCAT174, YELLOWCAT175, YELLOWCAT196, YELLOWCAT197, YELLOWCAT198, YELLOWCAT199, YELLOWCAT200, YELLOWCAT201, YELLOWCAT202, YELLOWCAT203, YELLOWCAT204, YELLOWCAT205, YELLOWCAT206, YELLOWCAT207, YELLOWCAT208, YELLOWCAT209, YELLOWCAT210, YELLOWCAT211, YELLOWCAT213, YELLOWCAT231, YELLOWCAT232, YELLOWCAT233, YELLOWCAT234, YELLOWCAT235, YELLOWCAT236, YELLOWCAT237, YELLOWCAT238, YELLOWCAT239, YELLOWCAT240, YELLOWCAT241, YELLOWCAT242, YELLOWCAT243, YELLOWCAT244, YELLOWCAT246, YELLOWCAT267, YELLOWCAT268, YELLOWCAT269, YELLOWCAT270, YELLOWCAT271, YELLOWCAT272, YELLOWCAT273, YELLOWCAT274, YELLOWCAT275, YELLOWCAT276, YELLOWCAT277, YELLOWCAT278, YELLOWCAT284, YELLOWCAT308, YELLOWCAT309, YELLOWCAT310, YELLOWCAT311, YELLOWCAT312, YELLOWCAT313, YELLOWCAT314, YELLOWCAT315, YELLOWCAT316, YELLOWCAT317 and JM#1 to JM#22.

(xiii) Anson currently holds a 100% interest in 536 Placer Claims in Utah, USA.

These claims are referred to as GR 1, GR 2, GR 3, GR 4, GR 5, GR 6, GR 7, GR 8, GR 9, GR 10, GR 11, GR 12, GR 13, GR 14, GR 15, GR 16, GR 17, GR 18, GR 19, GR 20, GR 21, GR 22, GR 23, GR 24, GR 25, GR 26, GR 27, GR 28, GR 29, GR 30, GR 31, GR 32, GR 33, GR 34, GR 35, GR 36,

(xiv) Anson currently holds a 100% interest in 307 Placer Claims in Utah, USA.

These claims are referred to as GR 549, GR 550, GR 551, GR 552, GR 553, GR 554, GR 555, GR 556, GR 557, GR 558, GR 559, GR 560, GR 561, GR 562, GR 563, GR 564, GR 565, GR 566, GR 567, GR 568, GR 569, GR 570, GR 571, GR 572, GR 573, GR 574, GR 575, GR 576, GR 577, GR 578, GR 579, GR 580, GR 581, GR 582, GR 583, GR 584, GR 585, GR 586, GR 587, GR 588, GR 589, GR 590, GR 591, GR 592, GR 593, GR 594, GR 595, GR 596, GR 597, GR 598, GR 599, GR 600, GR 601, GR 602, GR 603, GR 604, GR 605, GR 606, GR 607, GR 608, GR 609, GR 610, GR 611, GR 612, GR 613, GR 614, GR 615, GR 616, GR 617, GR 618, GR 619, GR 620, GR 621, GR 622, GR 623, GR 624, GR 625, GR 626, GR 627, GR 628, GR 629, GR 630, GR 631, GR 632, GR 633, GR 634, GR 635, GR 636, GR 637, GR 638, GR 639, GR 640, GR 641, GR 642, GR 643, GR 644, GR 645, GR 646, GR 647, GR 648, GR 649, GR 650, GR 651, GR 652, GR 653, GR 654, GR 655, GR 656, GR 663, GR 664, GR 665, GR 666, GR 667, GR 668, GR 669, GR 670, GR 677.

GR 678, GR 679, GR 680, GR 681, GR 682, GR 683, GR 684, GR 693, GR 695, GR 696, GR 697, GR 698, GR 699, GR 700, GR 709, GR 710, GR 711, GR 712, GR 713, GR 714, GR 715, GR 716, GR 725, GR 726W, GR 726E, GR 727, GR 728, GR 729, GR 730, GR 731, GR 732, GR 733, GR 734, GR 735, GR 736, GR 737, GR 738, GR 739, GR 740, GR 741, GR 742, GR 743, GR 744, GR 753, GR 754, GR 755, GR 756, GR 757, GR 758, GR 759, GR 760, GR 761, GR 762, GR 763, GR 764, GR 765, GR 766, GR 775, GR 776, GR 777, GR 778, GR 779, GR 780, GR 781, GR 782, GR 783, GR 784, GR 785, GR 786, GR 787, GR 788, GR 797, GR 798, GR 799, GR 800, GR 801, GR 802, GR 803, GR 804, GR 805, GR 806, GR 807, GR 808, GR 809, GR 810, GR 819, GR 820, GR 821, GR 822, GR 823, GR 824, GR 825, GR 826, GR 827, GR 828, GR 829, GR 830, GR 831, GR 832, GR 841, GR 842, GR 843, GR 844, GR 845, GR 846, GR 847, GR 848, GR 849, GR 850, GR 851, GR 852, GR 853, GR 854, GR 861, GR 862, GR 863, GR 864, GR 865, GR 866, GR 867, GR 868, GR 869, GR 870, GR 871, GR 872, GR 873, GR 874, GR 879, GR 880, GR 881, GR 882, GR 883, GR 884, GR 885, GR 886, GR 887, GR 888, GR 889, GR 890, GR 891, GR 892, GR 895, GR 896, GR 897, GR 898, GR 899, GR 900, GR 901, GR 902, GR 903, GR 904, GR 905, GR 906, GR 907, GR 908, GR 911, GR 912, GR 913, GR 914, GR 915, GR 916, GR 917, GR 918, GR 919, GR 920, GR 921, GR 922, GR 923, GR 924, GR 925, GR 926, GR 927, GR 928, GR 929, GR 930, GR 931, GR 932, GR 933, GR 934, GR 935, GR 936, GR 937, GR 938, GR 939, GR 940, GR 941, GR 942, GR 943, GR 944, GR 945, GR 946, GR 947, GR 948, GR 949, GR 950, GR 951 and GR 952.

(xv) Anson currently holds a 100% interest in 396 Placer Claims in Utah, USA.

These claims are referred to as TM 1, TM 2, TM 3, TM 4, TM 5, TM 6, TM 7, TM 8, TM 9, TM 10, TM 11, TM 12, TM 13, TM 14, TM 15, TM 16, TM 17, TM 18, TM 19, TM 20, TM 21, TM 22, TM 23, TM 24, TM 25, TM 26, TM 27, TM 28, TM 29, TM 30, TM 31, TM 32, TM 33, TM 34, TM 35, TM 36, TM 37, TM 38, TM 39, TM 40, TM 41, TM 42, TM 43, TM 44, TM 45, TM 46, TM 47, TM 48, TM 49, TM 50, TM 51, TM 52, TM 53, TM 54, TM 55, TM 56, TM 57, TM 58, TM 59, TM 60, TM 61, TM 62, TM 63, TM 64, TM 65, TM 66, TM 67, TM 68, TM 69, TM 70, TM 71, TM 72, TM 73, TM 74, TM 75, TM 76, TM 77, TM 78, TM 79, TM 80, TM 81, TM 82, TM 83, TM 84, TM 85, TM 86, TM 87, TM 88, TM 89, TM 90, TM 91, TM 92, TM 93, TM 94, TM 95, TM 96, TM 97, TM 98, TM 99, TM 100, TM 101, TM 102, TM 103, TM 104, TM 105, TM 106, TM 107, TM 108, TM 109, TM 176, TM 177, TM 178, TM 179, TM 180, TM 181, TM 182, TM 183, TM 184, TM 185, TM 186, TM 187, TM 188, TM 189, TM 190, TM 257, TM 258, TM 259, TM 260, TM 261, TM 262, TM 263, TM 264, TM 265, TM 266, TM 267, TM 268, TM 269, TM 270, TM 271, TM 272, TM 273, TM 274, TM 275, TM 276, TM 277, TM 278, TM 341, TM 342, TM 343, TM 344, TM 345, TM 346, TM 347, TM 348, TM 349, TM 350, TM 351, TM 352, TM 353, TM 354, TM 355, TM 356, TM 357, TM 358, TM 359, TM 360, TM 361, TM 362, TM 425, TM 426, TM 427, TM 428, TM 429, TM 430, TM 431, TM 432, TM 433, TM 434, TM 435, TM 436, TM 437, TM 438, TM 439, TM 440, TM 447, TM 448, TM 449, TM 450, TM 451, TM 452, TM 453, TM 454, TM 455, TM 456, TM 457, TM 458, TM 459, TM 460, TM 461, TM 462, TM 547, TM 548, TM 549, TM 550, TM 551, TM 552, TM 553, TM 554, TM 555, TM 556, TM 557, TM 558, TM 559, TM 560, TM 561, TM 562, TM 563, TM 564, TM 565, TM 566, TM 567, TM 568, TM 569, TM 570, TM 571, TM 572, TM 573, TM 574, TM 575, TM 576, TM 577, TM 578, TM 579, TM 580, TM 581, TM 582, TM 583, TM 584, TM 585, TM 586, TM 587, TM 588, TM 669, TM 670, TM 671, TM 672, TM 673, TM 674, TM 675, TM 676, TM 677, TM 678, TM 679, TM 680, TM 681, TM 682, TM 683, TM 684, TM 685, TM 686, TM 687, TM 688, TM 689, TM 690, TM 691, TM 692, TM 693, TM 694, TM 695, TM 696, TM 697, TM 698, TM 699, TM 700, TM 701, TM 702, TM 703, TM 704, TM 705, TM 706, TM 707, TM 708, TM 709, TM 710, TM 791, TM 792, TM 793, TM 794, TM 795, TM 796, TM 797, TM 798, TM 799, TM 800, TM 801, TM 802, TM 803, TM 804, TM 805, TM 806, TM 807, TM 808, TM 807, TM 808. TM 809, TM 810, TM 811, TM 812, TM 813, TM 814, TM 815, TM 816, TM 817, TM 818, TM 819, TM 820, TM 821, TM 822, TM 823, TM 824, TM 825, TM 826, TM 827, TM 828, TM 829, TM 830, TM 831, TM 832, TM 913, TM 914, TM 915, TM 916, TM 917, TM 918, TM 919, TM 920, TM 921, TM 922, TM 923, TM 924, TM 925, TM 926, TM 927, TM 928, TM 929, TM 930, TM 931, TM 932, TM 933, TM 934, TM 935, TM 936, TM 937, TM 938, TM 939, TM 940, TM 941, TM 942, TM 943, TM 944, TM 945, TM 946, TM 947, TM 948, TM 949, TM 1035, TM 1036, TM 1037, TM 1038, TM 1039, TM 1040, TM 1041, TM 1042, TM 1043, TM 1044, TM 1045, TM 1046, TM 1047, TM 1048, TM 1049, TM 1050, TM 1051, TM 1052, TM 1053, TM 1054, TM 1055, TM 1056, TM 1057, TM 1058, TM 1059, TM 1060, TM 1061, TM 1062 and TM 1063.

Appendix 5B

Mining exploration entity or oil and gas exploration entity quarterly cash flow report

Name of entity

Anson Resources Limited

ABN

46 136 636 005

Quarter ended ("current quarter")

31 December 2022

Consolidated statement of cash flows	Current quarter \$A'000	Year to date (6 months) \$A'000
1. Cash flows from operating activities		
1.1 Receipts from customers		
1.2 Payments for		
(a) exploration & evaluation	(2,445)	(4,514)
(b) development	(46)	(1,110)
(c) production	-	-
(d) staff costs	(1,184)	(1,484)
(e) administration and corporate costs	(405)	(933)
1.3 Dividends received (see note 3)	-	-
1.4 Interest received	66	69
1.5 Interest and other costs of finance paid	(7)	(10)
1.6 Income taxes paid	-	-
1.7 Government grants and tax incentives	-	-
1.8 Other (provide details if material)	-	-
1.9 Net cash from / (used in) operating activities	(4,021)	(7,982)

2. Cash flows from investing activities		
2.1 Payments to acquire or for:		
(a) entities	-	-
(b) tenements	-	-
(c) property, plant and equipment	-	(3)
(d) exploration & evaluation	-	-
(e) investments	-	-
(f) other non-current assets	-	-

Mining exploration entity or oil and gas exploration entity quarterly cash flow report

Consolidated statement of cash flows		Current quarter \$A'000	Year to date (6 months) \$A'000
2.2	Proceeds from the disposal of:		
	(a) entities	-	-
	(b) tenements	-	-
	(c) property, plant and equipment	-	-
	(d) investments	-	-
	(e) other non-current assets	-	-
2.3	Cash flows from loans to other entities	-	-
2.4	Dividends received (see note 3)	-	-
2.5	Other (provide details if material)	-	-
2.6	Net cash from / (used in) investing activities	-	(3)

3.	Cash flows from financing activities		
3.1	Proceeds from issues of equity securities (excluding convertible debt securities)	-	50,000
3.2	Proceeds from issue of convertible debt securities	-	-
3.3	Proceeds from exercise of options	2	435
3.4	Transaction costs related to issues of equity securities or convertible debt securities	(594)	(3,129)
3.5	Proceeds from borrowings	-	-
3.6	Repayment of borrowings (Lease liabilities)	(30)	(57)
3.7	Transaction costs related to loans and borrowings	-	-
3.8	Dividends paid	-	-
3.9	Other (provide details if material)	-	-
3.10	Net cash from / (used in) financing activities	(622)	47,249

4.	Net increase / (decrease) in cash and cash equivalents for the period		
4.1	Cash and cash equivalents at beginning of period	49,638	5,731
4.2	Net cash from / (used in) operating activities (item 1.9 above)	(4,021)	(7,982)
4.3	Net cash from / (used in) investing activities (item 2.6 above)	-	(3)
4.4	Net cash from / (used in) financing activities (item 3.10 above)	(622)	47,249

Mining exploration entity or oil and gas exploration entity quarterly cash flow report

Consolidated statement of cash flows		Current quarter \$A'000	Year to date (6 months) \$A'000
4.5	Effect of movement in exchange rates on cash held	18	18
4.6	Cash and cash equivalents at end of period	45,013	45,013

5.	Reconciliation of cash and cash equivalents at the end of the quarter (as shown in the consolidated statement of cash flows) to the related items in the accounts	Current quarter \$A'000	Previous quarter \$A'000
5.1	Bank balances	45,013	49,638
5.2	Call deposits	-	-
5.3	Bank overdrafts	-	-
5.4	Other (provide details)	-	-
5.5	Cash and cash equivalents at end of quarter (should equal item 4.6 above)	45,013	49,638

6.	Payments to related parties of the entity and their associates	Current quarter \$A'000
6.1	Aggregate amount of payments to related parties and their associates included in item 1	1,090
6.2	Aggregate amount of payments to related parties and their associates included in item 2	-
<i>Note: if any amounts are shown in items 6.1 or 6.2, your quarterly activity report must include a description of, and an explanation for, such payments.</i>		

Mining exploration entity or oil and gas exploration entity quarterly cash flow report

7.	Financing facilities <i>Note: the term "facility" includes all forms of financing arrangements available to the entity. Add notes as necessary for an understanding of the sources of finance available to the entity.</i>	Total facility amount at quarter end \$A'000	Amount drawn at quarter end \$A'000
7.1	Loan facilities	-	-
7.2	Credit standby arrangements	-	-
7.3	Other (please specify)	15,000	250
7.4	Total financing facilities	15,000	250
7.5	Unused financing facilities available at quarter end		14,750
7.6	<p>Include in the box below a description of each facility above, including the lender, interest rate, maturity date and whether it is secured or unsecured. If any additional financing facilities have been entered into or are proposed to be entered into after quarter end, include a note providing details of those facilities as well.</p> <p>On 17 May 2019 the company entered into an equity placement facility with Long State Investment Limited (LSI) for \$15,000,000.</p> <p>Anson may until 31 December 2023 draw down up to \$250,000 at a time (\$1,500,000 with the prior written consent of the investor) at a cost of 5% of the drawn down amount at a price equal to the average of 2 daily VWAPs nominated by the investor during the 20 consecutive trading days commencing on the trading day immediately after a placement notice is provided.</p> <p>To date \$250,000 has been drawn down.</p> <p>Drawdown is at the discretion of Anson.</p> <p>The facility is secured against 5,000,000 security shares</p>		

8.	Estimated cash available for future operating activities	\$A'000
8.1	Net cash from / (used in) operating activities (item 1.9)	(4,021)
8.2	(Payments for exploration & evaluation classified as investing activities) (item 2.1(d))	-
8.3	Total relevant outgoings (item 8.1 + item 8.2)	(4,021)
8.4	Cash and cash equivalents at quarter end (item 4.6)	45,013
8.5	Unused finance facilities available at quarter end (item 7.5)	14,750
8.6	Total available funding (item 8.4 + item 8.5)	59,763
8.7	Estimated quarters of funding available (item 8.6 divided by item 8.3)	14
	<p><i>Note: if the entity has reported positive relevant outgoings (ie a net cash inflow) in item 8.3, answer item 8.7 as "N/A". Otherwise, a figure for the estimated quarters of funding available must be included in item 8.7.</i></p>	
8.8	<p>If item 8.7 is less than 2 quarters, please provide answers to the following questions:</p> <p>8.8.1 Does the entity expect that it will continue to have the current level of net operating cash flows for the time being and, if not, why not?</p> <p>Answer: n/a</p>	

Mining exploration entity or oil and gas exploration entity quarterly cash flow report

8.8.2 Has the entity taken any steps, or does it propose to take any steps, to raise further cash to fund its operations and, if so, what are those steps and how likely does it believe that they will be successful?

Answer: n/a

8.8.3 Does the entity expect to be able to continue its operations and to meet its business objectives and, if so, on what basis?

Answer: n/a

Note: where item 8.7 is less than 2 quarters, all of questions 8.8.1, 8.8.2 and 8.8.3 above must be answered.

Compliance statement

- 1 This statement has been prepared in accordance with accounting standards and policies which comply with Listing Rule 19.11A.
- 2 This statement gives a true and fair view of the matters disclosed.

Date: 31 January 2023

Authorised by: The Executive Chairman and CEO
(Name of body or officer authorising release – see note 4)

Notes

1. This quarterly cash flow report and the accompanying activity report provide a basis for informing the market about the entity's activities for the past quarter, how they have been financed and the effect this has had on its cash position. An entity that wishes to disclose additional information over and above the minimum required under the Listing Rules is encouraged to do so.
2. If this quarterly cash flow report has been prepared in accordance with Australian Accounting Standards, the definitions in, and provisions of, *AASB 6: Exploration for and Evaluation of Mineral Resources* and *AASB 107: Statement of Cash Flows* apply to this report. If this quarterly cash flow report has been prepared in accordance with other accounting standards agreed by ASX pursuant to Listing Rule 19.11A, the corresponding equivalent standards apply to this report.
3. Dividends received may be classified either as cash flows from operating activities or cash flows from investing activities, depending on the accounting policy of the entity.
4. If this report has been authorised for release to the market by your board of directors, you can insert here: "By the board". If it has been authorised for release to the market by a committee of your board of directors, you can insert here: "By the [name of board committee – eg Audit and Risk Committee]". If it has been authorised for release to the market by a disclosure committee, you can insert here: "By the Disclosure Committee".
5. If this report has been authorised for release to the market by your board of directors and you wish to hold yourself out as complying with recommendation 4.2 of the ASX Corporate Governance Council's *Corporate Governance Principles and Recommendations*, the board should have received a declaration from its CEO and CFO that, in their opinion, the financial records of the entity have been properly maintained, that this report complies with the appropriate accounting standards and gives a true and fair view of the cash flows of the entity, and that their opinion has been formed on the basis of a sound system of risk management and internal control which is operating effectively.