

DRILLING COMPLETED AT PORT GREGORY

- ✧ 139 hole In-Fill and Extension Air Core drilling program constituting 4455 metres has been completed at HVY's 100% owned Port Gregory Garnet Project with the first batch of assays due to be received.
- ✧ Drilling has tested east, north and south potential extensions to the resource with positive visual results observed.
- ✧ Red Hill Drilling to commence in early January 2023.

Heavy Minerals Limited (ACN 647 831 833) ("HVY", "Heavy Minerals" or the "Company") is pleased to announce that drilling has been completed at its 100% owned Port Gregory Project.

The Company has completed a 139 hole - 4455 metre Air Core drill program that is intended to improve the classification of the existing JORC Mineral Resource prior to commencing a pre-feasibility study and to also potentially increase the total resource based on extension drilling to the east, north and south. The Company is awaiting receipt of the first batch of assay results with the majority of the results anticipated in early February 2023. The Company anticipates delivering a Mineral Resource update in March 2023.

The Company will commence its maiden 1400 metre Air Core drilling program at the Red Hill Project Site in early January 2023. Assay results for the Red Hill Program are anticipated to be received in March 2023 with a potential resource being released in Q2 CY 2023 pending positive results. Timing for the release of the results from both drilling programs are subject to laboratory throughput capabilities and HVY interpretation and compilation.



Figure 1: Visual confirmation of Garnet in recently completed drilling at Port Gregory

The Company is now looking forward to beginning its maiden drilling program at Red Hill in early January. The company anticipates it will commence its pre-feasibility study for the Port Gregory Project in April 2023. The Company will strive to add significant value to the Project via resource expansion and feasibility work over the next 12 months.”

The objective of this program was to infill the existing drilling to improve the classification of the existing resource and to extend the current resource by drilling the open extensions to the east, north and south. Figure 2 shows the planned infill drill holes and the extension drill holes.

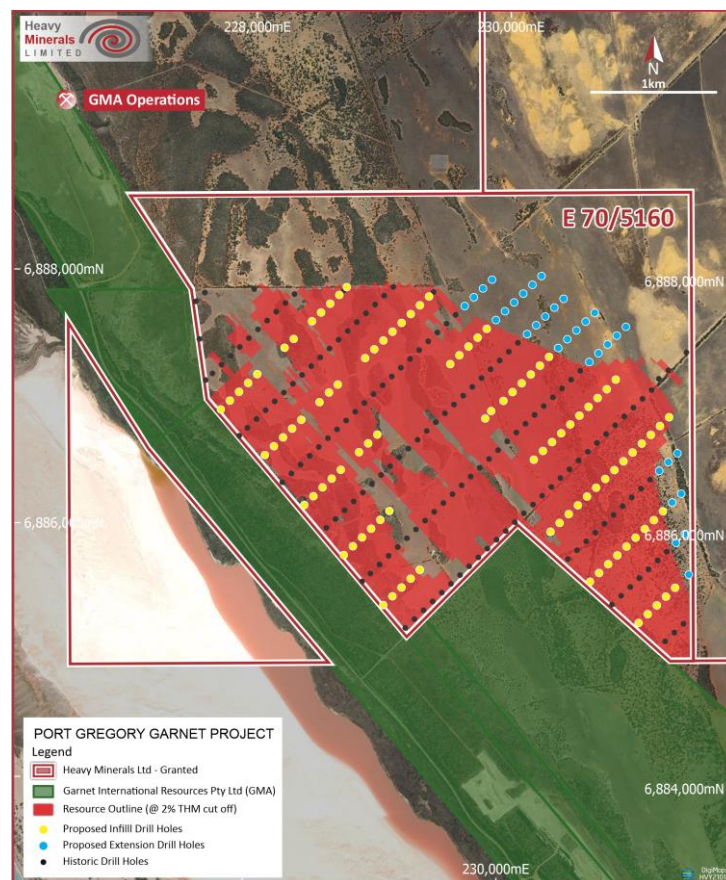
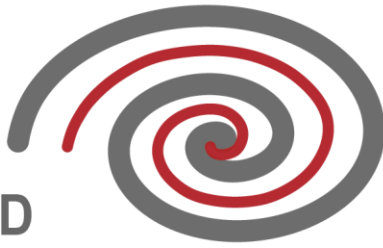


Figure 2: Port Gregory Garnet Project



Red Hill Drilling program

The maiden Air Core drilling program at Red Hill, will begin in early January. The objective of this program is to delineate a potential resource based on exciting results generated by the company during an Auger program earlier in the year. Figure 3 shows the planned drill holes for the program.



Figure 3: Red Hill Garnet Project



Upcoming News:

- ✂ **January 2023:** Initial Assay results for Port Gregory drilling campaign
- ✂ **February 2023:** Assay results for Port Gregory drilling campaign
- ✂ **March 2023:** Assay results for Red Hill drilling campaign
- ✂ **March 2023:** Updated Port Gregory JORC Resource
- ✂ **April 2023:** Maiden Red Hill JORC Resource
- ✂ **April 2023:** Commencement of Port Gregory Pre-Feasibility Study
- ✂ **June 2023:** Red Hill Scoping level Metallurgical Study

This announcement has been authorised by the Board of Directors of the Company.

Ends

For further information, please contact:

Heavy Minerals Limited

Adam Schofield, Non-Executive Chairman Ph: +61 (08) 9481 0389

E: info@heavyminerals.com

Media & Investor Enquiries

Peter Taylor, NWR Communications Ph: +61 (0) 412 036 231

E: Peter@nwrcommunications.com.au

About Heavy Minerals Limited

Heavy Minerals Limited (ASX: HVY) is an Australian listed industrial mineral exploration company.

The Company's projects are prospective for industrial minerals including but not limited to Garnet, Zircon, Rutile and Ilmenite. The Company's initial focus is the Port Gregory Garnet Project which has a JORC (2012) Mineral Resource of 4.9 million tonnes of contained Garnet and 500 thousand tonnes of ilmenite¹. The Company's other project is the Inhambane Heavy Mineral Project in Mozambique which contains a JORC (2012) Inferred Mineral Resource of 51 million tonnes @ 3.4% total heavy mineral².

To learn more please visit: www.heavyminerals.com

¹ https://cdn-api.markitdigital.com/apiman-gateway/ASX/asx-research/1.0/file/2924-02516855-6A1089842?access_token=83ff96335c2d45a094df02a206a39ff4

² https://cdn-api.markitdigital.com/apiman-gateway/ASX/asx-research/1.0/file/2924-02462745-6A1067130?access_token=83ff96335c2d45a094df02a206a39ff4