



The Mineral Riches of Northeast Victoria

Dart Mining Annual General Meeting

Wednesday 30th November 2022 11:00 AEST

Mr. James Chirnside – Chairman & Managing Director

Dr. Ben Hines – Head of Exploration

ASX:DTM

FORWARD LOOKING STATEMENTS CAUTION

Certain statements contained in this document constitute forward looking statements. Such forward-looking statements are based on a number of estimates and assumptions made by the Company and its consultants in light of experience, current conditions and expectations of future developments which the Company believes are appropriate in the current circumstances. These estimates and assumptions while considered reasonable by the Company are subject to known and unknown risks, uncertainties and other factors which may cause the actual results, achievements and performance of the Company to be materially different from the future results and achievements expressed or implied by such forward-looking statements.

Investors are cautioned that forward looking information is no guarantee of future performance and accordingly, investors are cautioned not to place undue reliance on these forward-looking statements.

CORPORATE PROFILE

Corporate Metrics

- ASX Code - DTM
- Shares on Issue ~ 155.26m
- Options & Performance Rights on Issue ~ 28.36m
- Market Capitalisation @ \$0.07 = ~A\$10.86m

Key Personnel

- James Chirnside – Chairman & Managing Director
- Carl Swensson – Non-Executive Director
- Richard Udovenya – Non-Executive Director
- Julie Edwards – Company Secretary

Management

- Ben Hines – Head of Exploration
- Michael Roberts – Finance & Administration

Service Providers

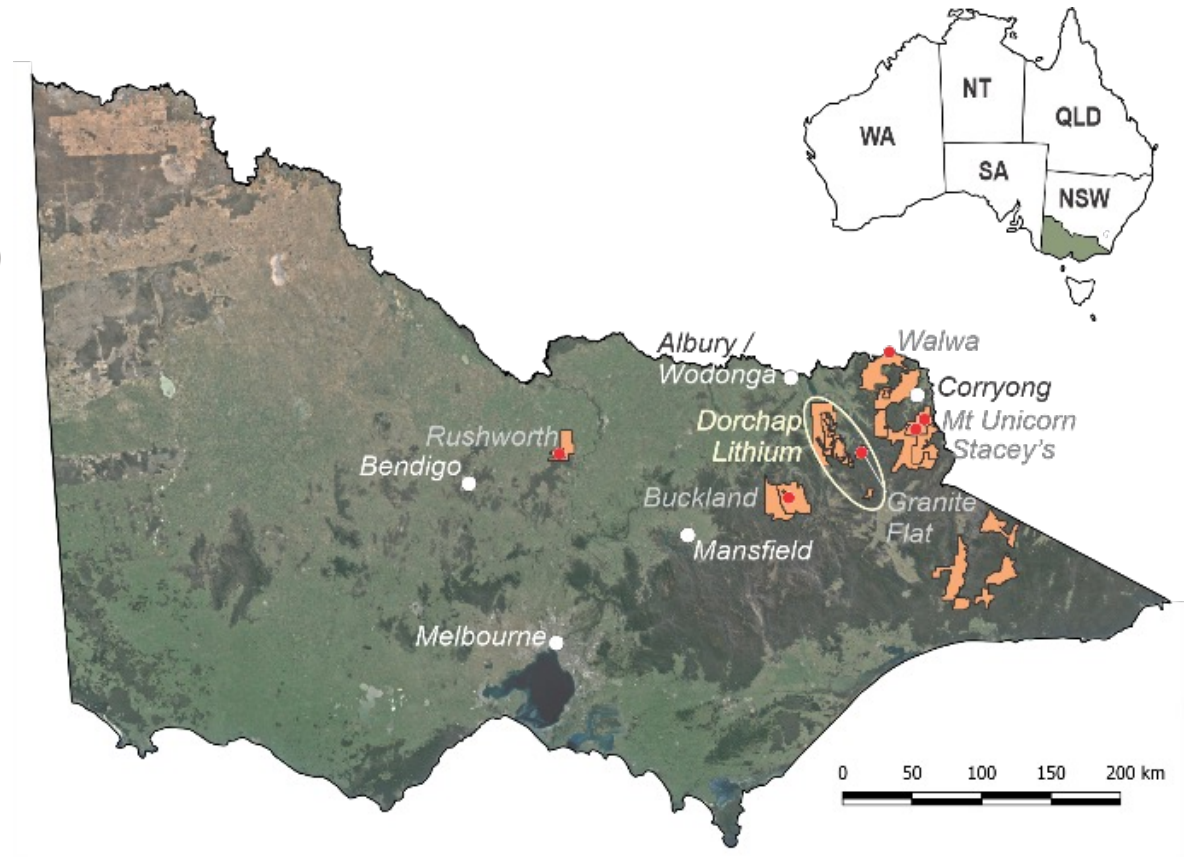
- Lowell Accounting Services - Accounting
- Morrows - Audit
- Resources Law International - Legal Advisors
- Biosis - Environment & Cultural Heritage
- ALS Limited, Gekko Systems - Lab Services



ASX:DTM

EXPLORATION LICENCES, FOOTPRINT & PROJECTS

- ~5,000 km² tenement area
- Focus on NE and Eastern Victoria
- Experienced team experience in NE Victorian Geology
- Central Lachlan Fold Belt
 - *Silurian to Devonian magmatism (S & I type granites)*
 - *Three orogenic events*
- Diverse geological setting
 - *Orogenic Au*
 - *Porphyry Cu-Au, Mo-Cu-Ag*
 - *Li-Cs-Ta Pegmatites*
- Exposure to precious, critical, and base metals
- Footprint includes:
 - 9 Historic Goldfields
 - >1,000 LCT Pegmatite dykes
 - 8 Au-Cu, Mo-Cu Porphyry Projects



TENEMENTS STATUS

Tenement Number	Name	Tenement Type	Area (km ²) Unless specified	Interest	Location	
MIN006619	Mt View ²	Mining License	224 Ha	100%	NE Victoria	
EL5315	Mitta Mitta ⁴	Exploration Licence	148	100%	NE Victoria	
EL006016	Rushworth ⁴	Exploration Licence	32	100%	Central Victoria	
EL006277	Empress	Exploration Licence	87	100%	NE Victoria	
EL006300	Eskdale ³	Exploration Licence	96	100%	NE Victoria	
EL006486	Mt Creek	Exploration Licence	116	100%	NE Victoria	
EL006764	Cravensville	Exploration Licence	170	100%	NE Victoria	
EL006861	Buckland	Exploration Licence	414	100%	NE Victoria	
EL006994	Wangara	Exploration Licence	190	100%	Central Victoria	
EL007007	Union	Exploration Licence	3	100%	Central Victoria	
EL007008	Buckland West	Exploration Licence	344	100%	NE Victoria	
EL006865	Dart	EL (Application)	567	100%	NE Victoria	
EL006866	Cudgewa	EL (Application)	508	100%	NE Victoria	
EL007099	Sandy Creek	Exploration Licence	437	100%	NE Victoria	
EL007170	Berringama	EL (Application)	27	100%	NE Victoria	
EL007430	Buchan	EL (Application)	546	100%	Gippsland	
EL007435	Goonerah	EL (Application)	587	100%	Gippsland	
EL007425	Deddick	EL (Application)	341	100%	Gippsland	
EL007428	Boebuck	EL (Application)	355	100%	NE Victoria	
EL007426	Walwa	EL (Application)	499	100%	NE Victoria	
EL007754	Tallandoon	EL (Application)	88	100%	NE Victoria	
RL006615	Fairley's ²	Retention License	340 Ha	100%	NE Victoria	
RL006616	Unicorn ^{1&2}	Retention License	23,243 Ha	100%	NE Victoria	
EL9476	Woomargama	Exploration Licence	85	100%	New South Wales	
ELA6536	Yambacoon	EL (Application)	549	100%	New South Wales	
ELA6548	Barellan	EL (Application)	159	100%	New South Wales	

All tenements remain in good standing as of 30th September 2022.

NOTE 1: Unicorn Project area subject to a 2% NSR Royalty Agreement with Osisko Gold Royalties Ltd dated 29 April 2013.

NOTE 2: Areas subject to a 1.5% Founders NSR Royalty Agreement.

NOTE 3: Areas are subject to a 1.0% NSR Royalty Agreement with Minvest Corporation Pty Ltd (See DTM ASX Release 1 June 2016).

NOTE 4: Areas are subject to a 0.75% Net Smelter Royalty on gold production, payable to Bruce William McLennan.

SUMMARY OF WORKS – Year to Date

Dorchap Lithium Pegmatites

- XRD identified dominant primary spodumene mineralisation

Granite Flat Cu-Au Porphyry

- Drill testing geophysical targets (1003m)
- Completion of soil survey (~5,030 samples)

Buckland Orogenic Gold

- Orientation soil survey across Shippens Gully area

Rushworth Orogenic Gold Project

- Reconnaissance sampling & structural mapping
- pXRF analysis of drill pulps – geochemical characterisation
- Regional soil geochemical sampling & testing



ASX:DTM

SUMMARY OF WORKS – Year to Date cont....

Land Management / Tenements

- Renewals
- New applications

Corporate Activities

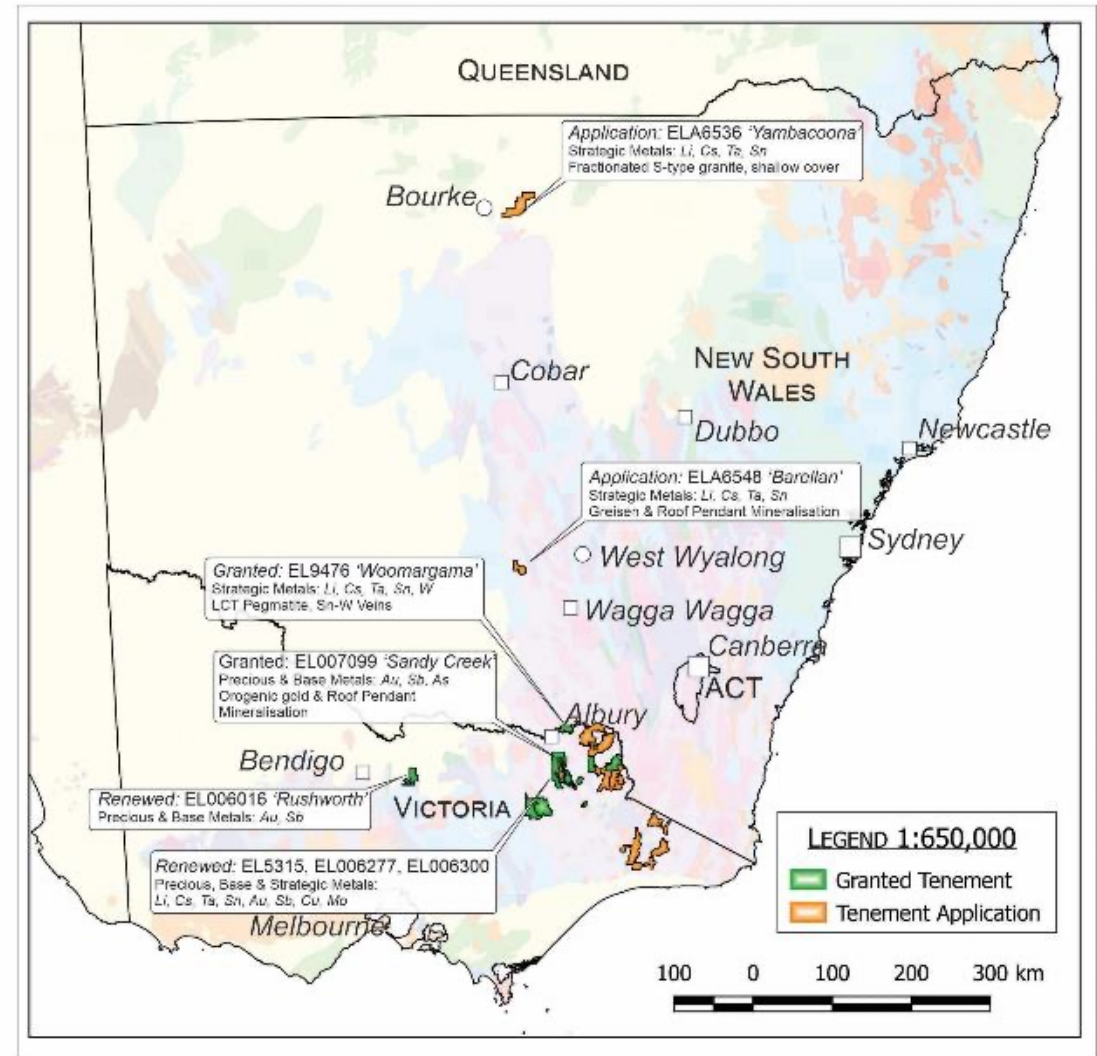
- SQM Farm-in Joint Venture
- Other corporate engagement

Work Health & Safety

- WH&S officer appointment
- Review and implementation of procedures and reporting

Environment

- Remediation of historic workings
- Drill hole remediation program following heavy rains & scouring
- Conversion of exploration camp to solar power
- Steel core trays replaced with recycled plastic core trays



DORCHAP LITHIUM PROJECT - Profile

Location

- Situated in the Dorchap Range, between Eskdale & Glen Wills
- Historic tin mining district

Style

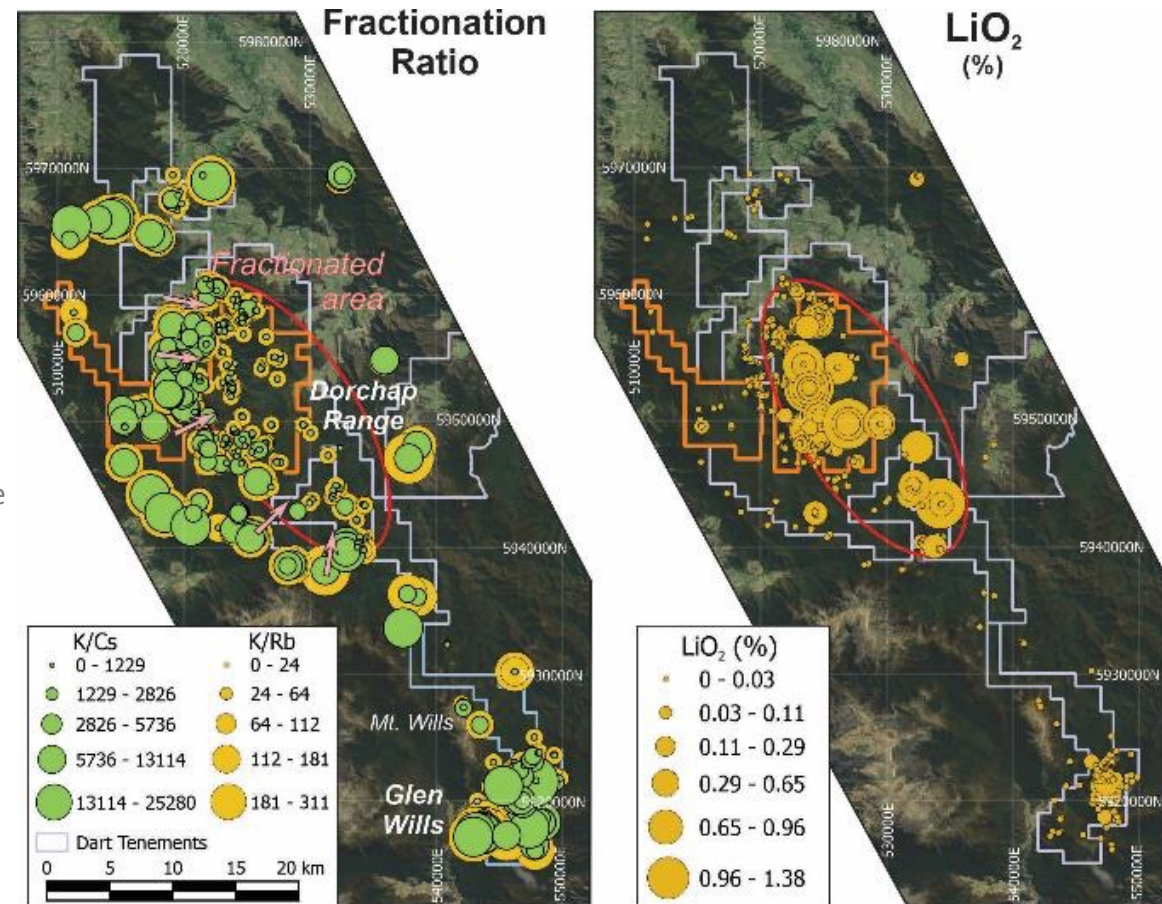
- Pegmatite hosted Lithium-Caesium-Tantalum (LCT) mineralisation
- Spodumene & Petalite mineralisation, with localised lepidolite & amblygonite
- Exposure is often poor or obscured by heavy vegetation

Scale

- 20x12km zone of highly-fractionated pegmatites identified from surface sampling
- >1,000 LCT pegmatite dykes across the dyke swarm
- Multiple Li mineralised pegmatite dykes identified, with Li hosted primarily by spodumene

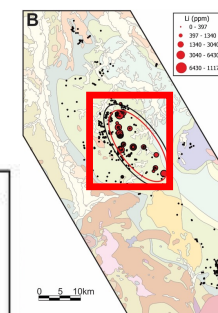
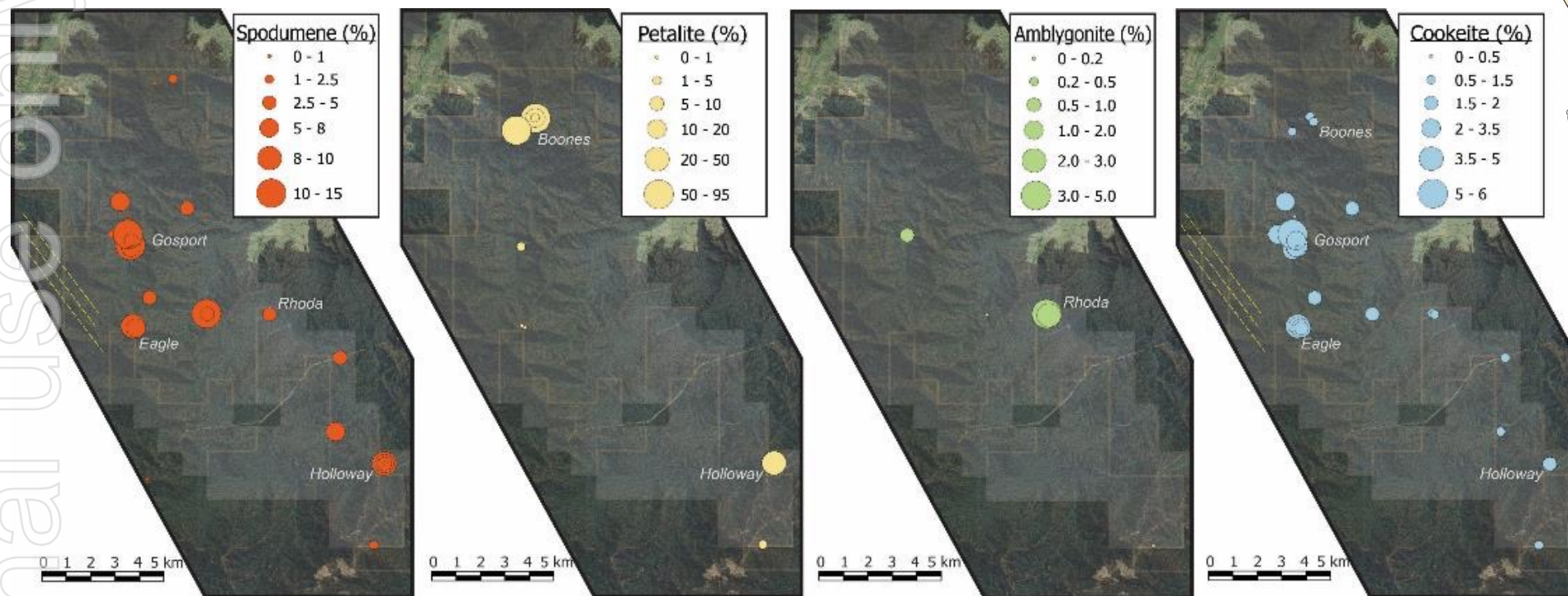
Results Highlights

- 10m @ 1.38% Li₂O (rockchip sampling)
- 10m @ 1.22% Li₂O (rockchip sampling)
- 10m @ 0.95% Li₂O & 20m @ 0.33% Li₂O (Eagle Dyke, channel sampling)
- 16m @ 0.32% Li₂O, (Bluejacket Dyke, rock-chip sampling)
- 20m @ 0.332% Li₂O from 2m, including 2m @ 1.16% Li₂O (drilling)



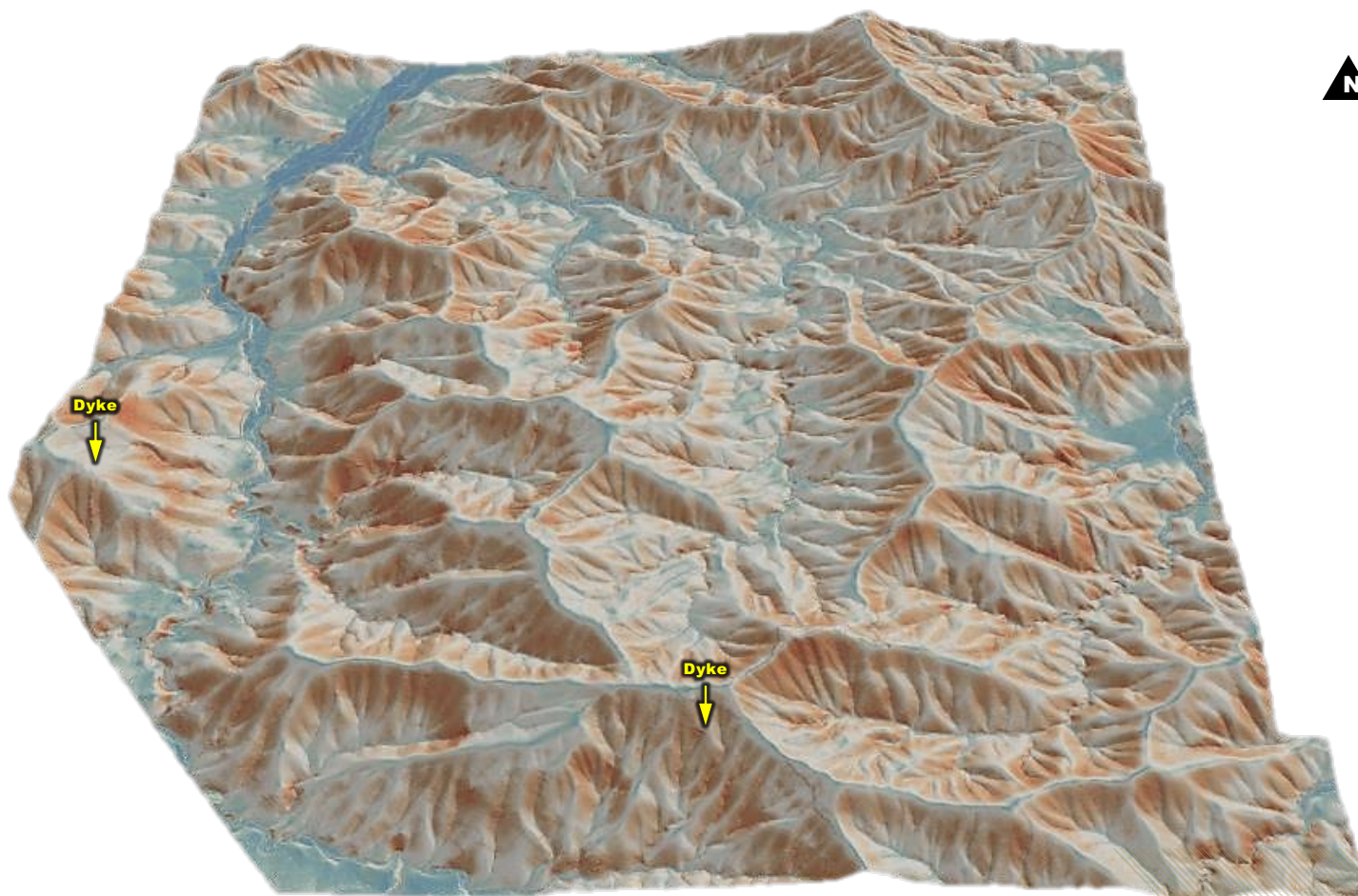
ASX:DTM

DORCHAP LITHIUM PROJECT - Mineralogy

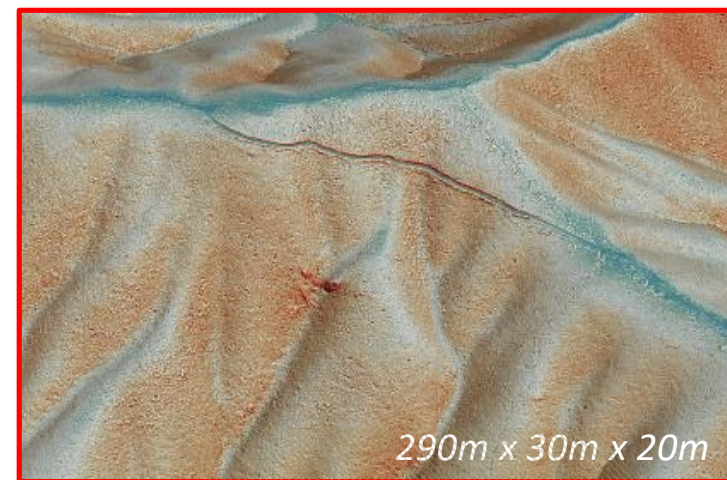
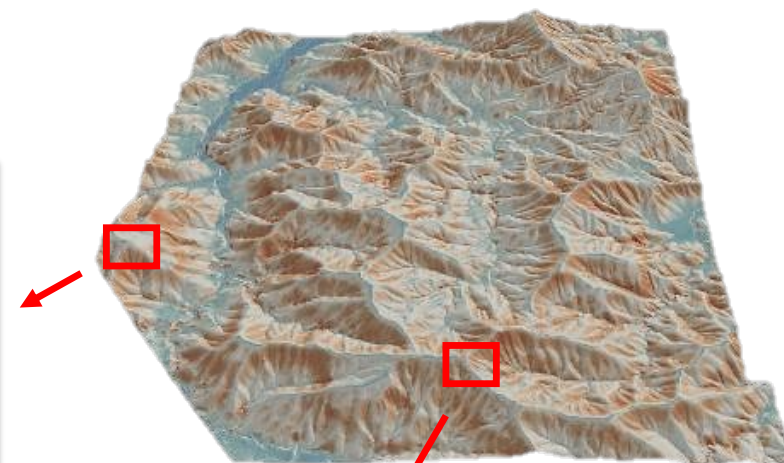
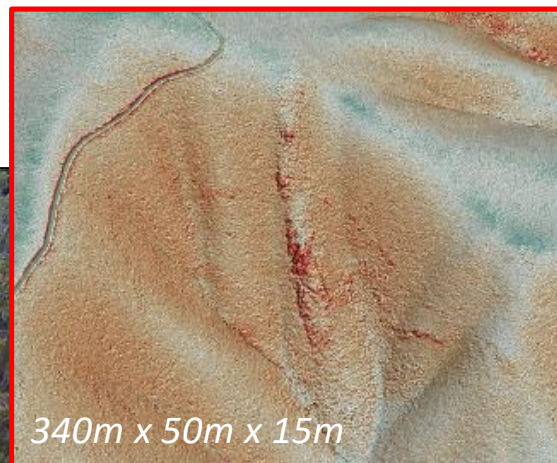


XRD shows spodumene dominant

DORCHAP LITHIUM - LiDAR



DORCHAP LITHIUM – LiDAR cont.....



ASX:DTM

GRANITE FLAT Cu-Au PROJECT- Profile

Location

- Situated adjacent to the Omeo Highway, between Mitta Mitta & Glen Wills

Scale

- 1.8x 2.4km soil Cu-Au footprint, additional anomalies open in all directions
- Significant remanent magnetism anomalies identified north of project footprint
- IP chargeability and resistivity anomalies identified across 1.5 x 2.0km footprint
- Significant intervals of Cu-Au mineralisation intersected up to 180m below surface

Style

- Two mineralisation styles identified:
 - Intrusion-related Cu-Au – long intervals of low-grade Cu-Au
 - Hydrothermal overprint – Narrow silica-sulphide veins of high-grade Au-Cu-Ag ± Pb, Zn

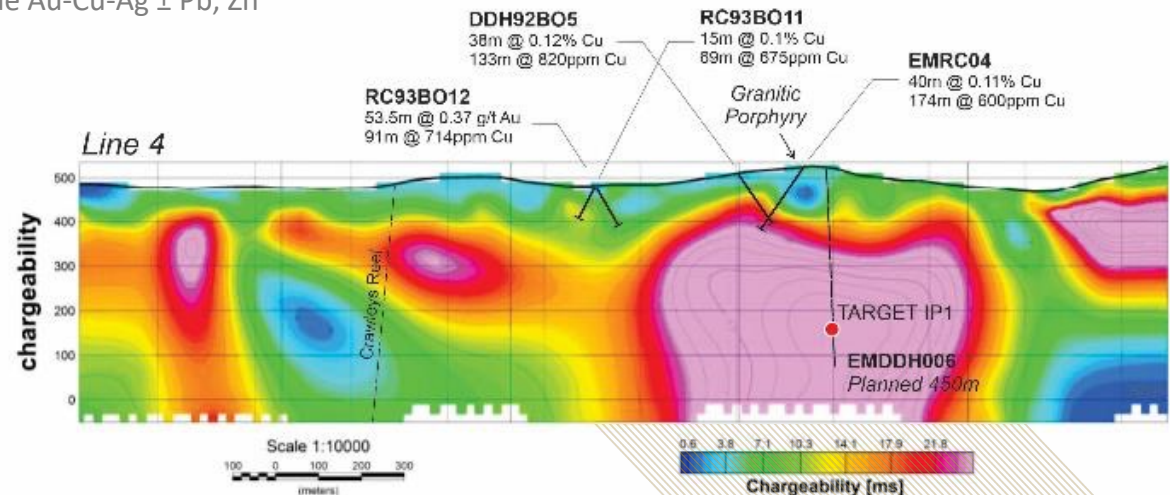
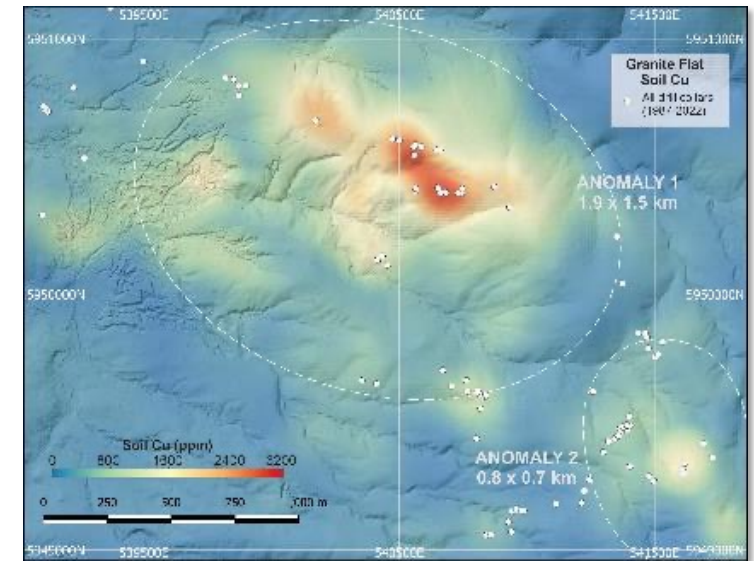
Results Highlights

Gold

- 19m @ 9.39 g/t Au, including 3m @ 41.1 g/t from 28m
- 4m @ 3.23 g/t Au, including 1m @ 7.84 g/t from 15m

Copper

- 19m @ 0.61% Cu, including 3m @ 1.52%
- 28m @ 0.35% Cu, including 9m @ 0.73% from 7m
- 40m @ 0.11% Cu including 19m @ 0.18% Cu from 35m
- 138m @ 0.09% Cu from surface (entire hole)
- 111m @ 0.07% Cu from surface



GRANITE FLAT Cu-Au PROJECT - Diamond Drilling

Low-grade targets, long intercepts

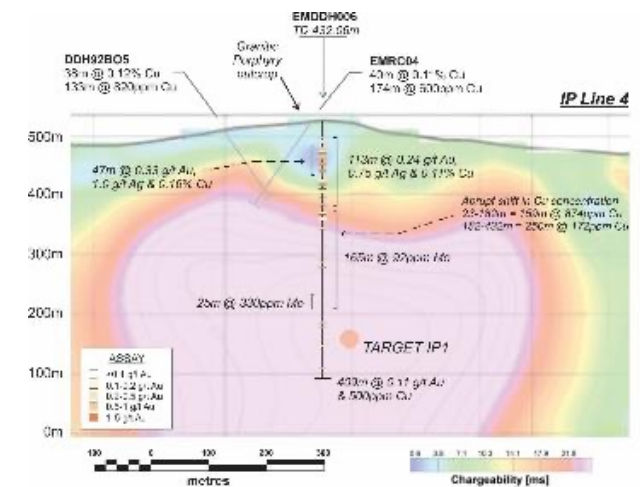
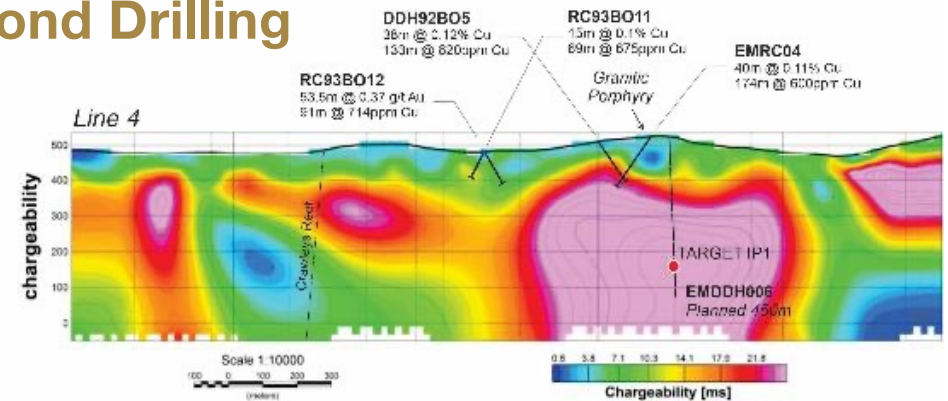
- Dominantly shallow drilling

Dart completed:

- 2381m Diamond drilling completed (13 holes; 2022)
- 1280m deep diamond drilling targeting geophysical targets
- Deepest hole on the project - 429m (Feb 2022)
- 937m targeting shallow epithermal overprint (8 holes)

Recent geophysical survey shows large anomalies at 200-400m below surface

- None of the geophysical anomalies identified have ever been drilled - until now
- First phase drilling of geophysical targets completed



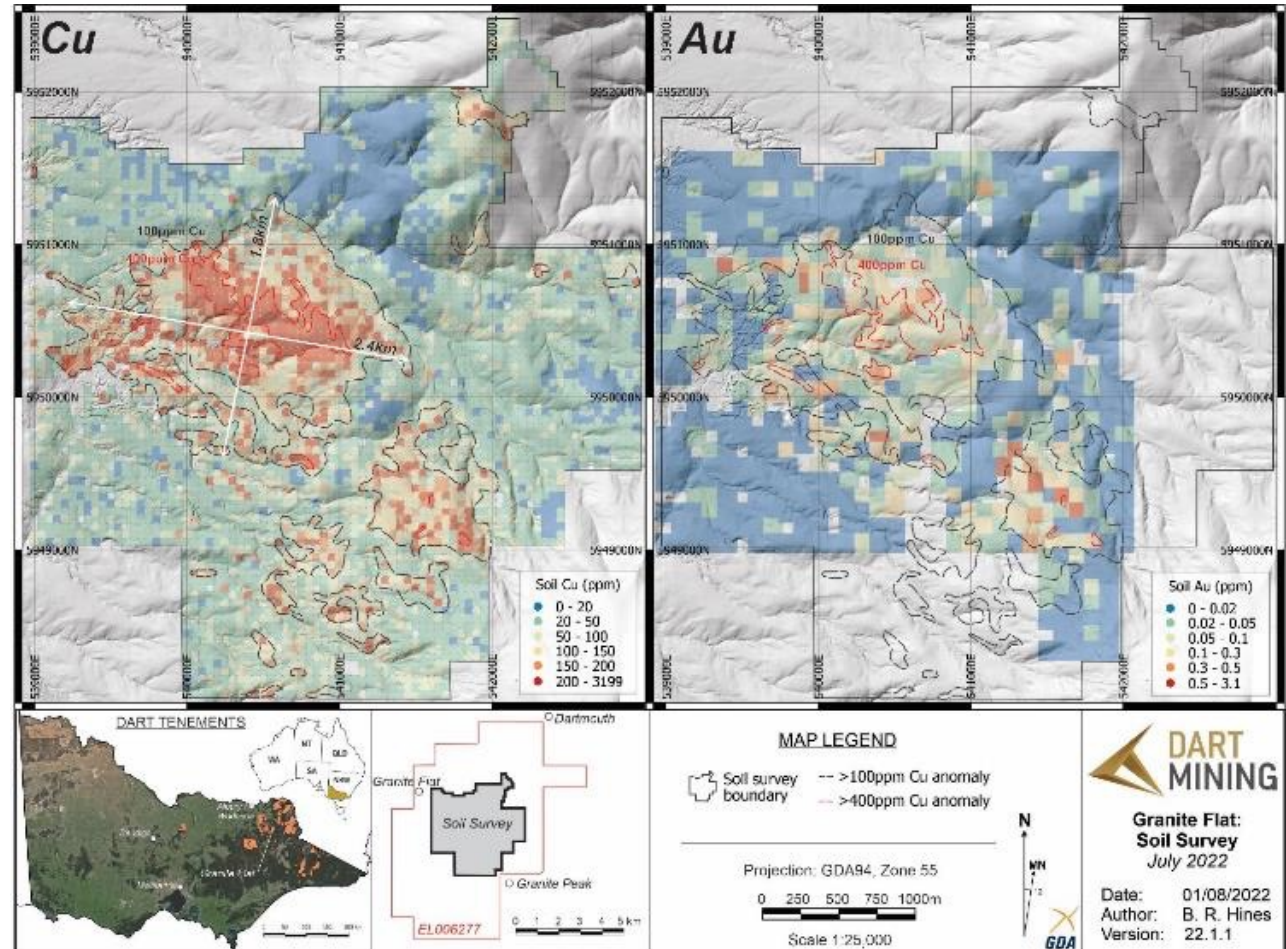
GRANITE FLAT Cu-Au PROJECT – Soil Geochemistry Survey

Regional soil grid completed

- 50x50m sample resolution
- 4x4km area sampled
- 5030 samples collected and analysed
- Subset (100x100m grid) analysed for soil gold
- Peak results 0.32% Cu & 3.1 g/t Au
- Largest anomaly spans 1.8x2.4km

In addition

- Several additional anomalies identified, including As and Pb outside of primary Cu-Au anomalies



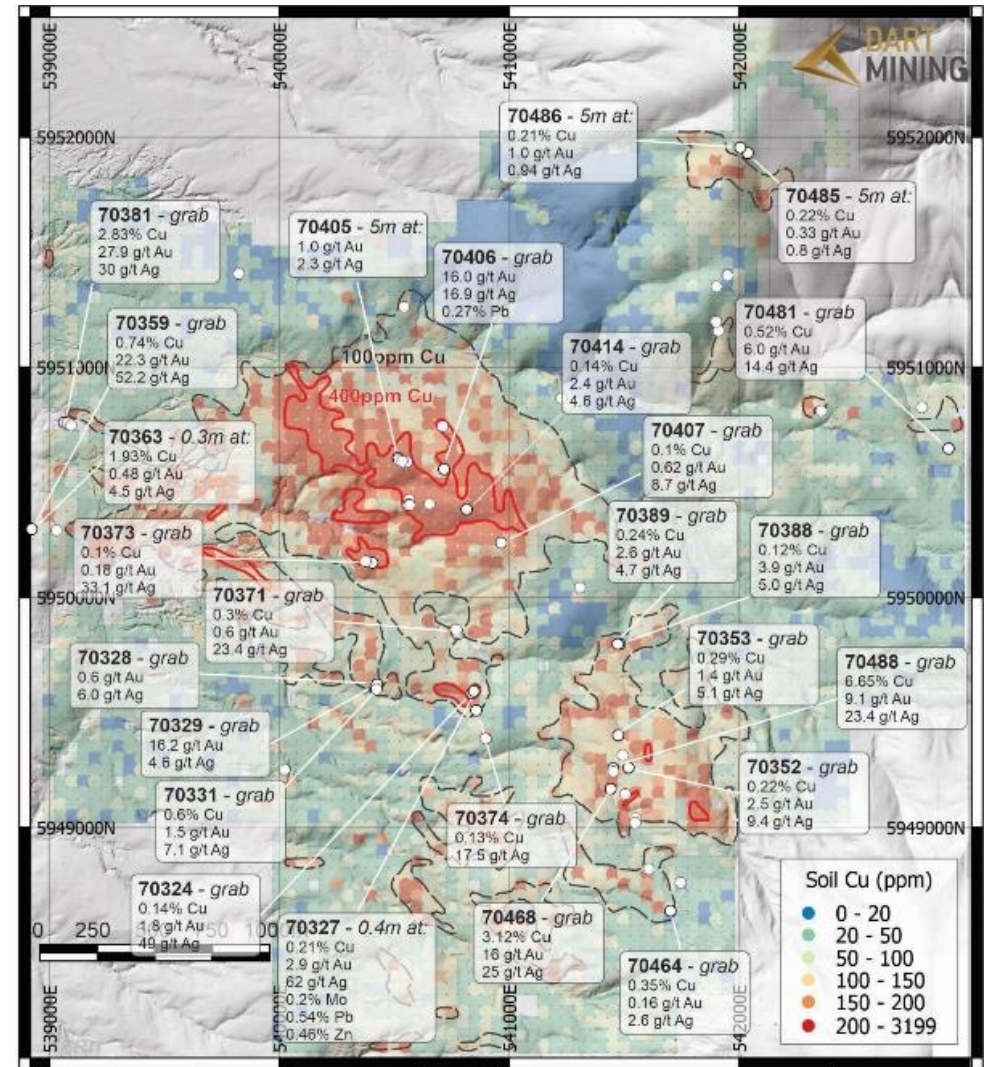
GRANITE FLAT Cu-Au PROJECT – Rock chip sampling

Surface rock chip sampling

- Surface sampling has followed up on historic workings identified in LiDAR
- Epithermal overprint - distinct geochemistry; narrow, high-grade mineralisation

Several mineralisation trends identified

- Future exploration targets
- Peak results include: **27.9g/t Au, 6.65% Cu, 49 g/t Ag**



Proposed Work Schedule 2023

Flagship Projects

Dorchap Lithium Li

- *Surface sampling program*
- *Low impact diamond drilling*
- *Standard work plans targeting key prospects*

Granite Flat Cu-Au

- *RC drilling – bulk tonnage target*
- *Diamond Drilling – high-grade targets*
- *Geophysics interpretation & review*

Other Projects

Rushworth Au

- *LiDAR acquisition*
- *Bulk sample composition & analysis*
- *Completion of soil survey*
- *Identification of drill targets*

Sandy Creek Au

- *Diamond drilling of selected deeper targets*

Buckland Valley Au

- *Diamond drilling north of Fairley's ridge*

SUMMARY

- Exceptional and commanding tenement position in a highly prospective under-explored region
- Renewable energy transition underpinning demand for entire metals complex and many of these critical minerals are represented within Dart's exploration portfolio
- Constructive long-term price fundamentals including low inventories, Covid-19 and Ukraine war related supply constraints
- Geolocation of projects increasingly important to avoid unreliable supply dependencies
- DTM is cheap vs. peers and has higher levels of prospectivity
- Well funded with very supportive long-term shareholders

DTM is a responsible, low cost, self-reliant explorer that with a systematic and focussed exploration approach

DISCLAIMER

The information contained in this presentation is for informational purposes only and does not constitute an offer to issue, or arrange to issue, securities or other financial products. The information contained in this presentation is not investment or financial product advice and is not intended to be used as the basis for making investment decisions. The presentation has been prepared without taking into account the investment objectives, financial situation or particular needs of any particular person. Before making an investment decision, you should consider, with or without the assistance of a financial advisor, whether an investment is appropriate in light of your particular investment needs, objectives and financial circumstances.

No representation or warranty, express or implied, is made as to the fairness, accuracy, completeness or correctness of the information, opinions and conclusions contained in this presentation. To the maximum extent permitted by law, none of Dart Mining NL, their directors, employees or agents, nor any other person accepts any liability, including, without limitation, any liability arising out of fault of negligence, for any loss arising from the use of the information contained in this presentation. In particular, no representation or warranty, express or implied is given as to the accuracy, completeness or correctness, likelihood of achievement or reasonableness or any forecasts, prospects or returns contained in this presentation nor is any obligation assumed to update such information. Such forecasts, prospects or returns are by their nature subject to significant uncertainties and contingencies.