



Skyfii helps organisations activate the power of their data through technology & human ingenuity, to optimise the spaces where we live, work, shop, travel & play.

use only



# EXECUTIVE SUMMARY

## STRONG MACRO TRENDS

- Increasing global focus on crowd analytics and occupancy management
- Growing demand for our industry leading technology and data solutions
- Strong customer focus on LiDAR technology

## GROWING RECURRING REVENUE

- Q1 FY23 total recurring revenue up of \$3.8m +11% vs pcp
- Quarterly Cash Receipts from customers of \$6.4m, up 49% on pcp with a net cash outflow from operations of \$0.9m
- Pro forma Annualised Recurring Revenue (ARR) exited Q1 FY23 at \$15.7m, negatively impacted by higher rate of customer contraction and churn

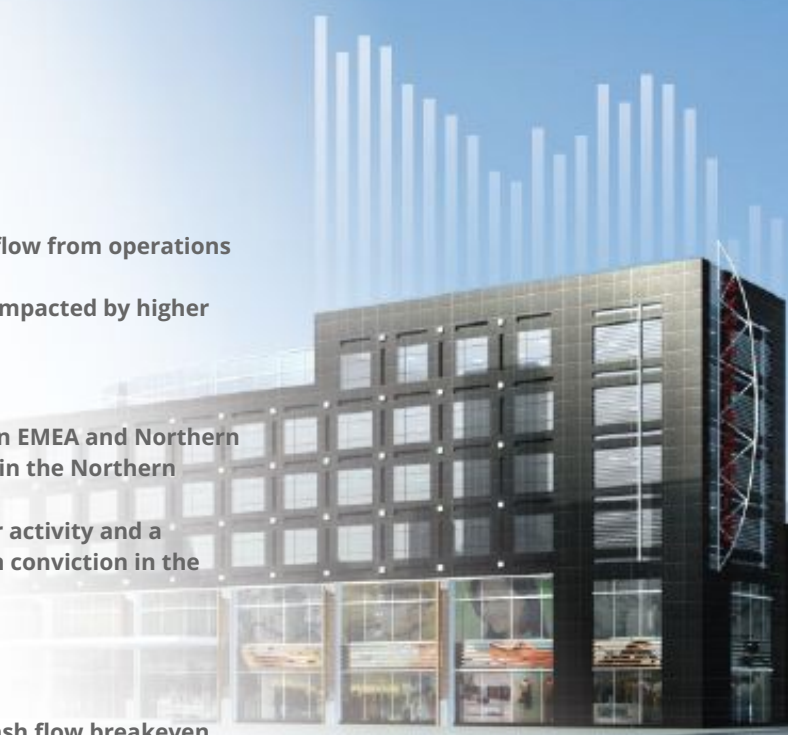
## THE OPERATING ENVIRONMENT

- Net cash reduced during the quarter primarily due to delays in key annual renewals in EMEA and Northern American region, a seasonally slower start to the year due to extended summer break in the Northern Hemisphere
- Despite the headwinds experienced during Q1, due to slower than expected customer activity and a slowdown in closing out of key projects due to the supply chain impacts we have a high conviction in the near term pipeline and we expect to have a stronger Q2

## STRONG GROWTH OUTLOOK

- \$31m in advanced stage deal pipeline
- The Company expects to grow ARR to >\$20m during FY23 and achieve a sustainable cash flow breakeven position during 2H FY23

only  
use  
real



# DATA INTELLIGENCE FOR PHYSICAL SPACES, ALL ON ONE PLATFORM



AODB



SOCIAL



WI-FI



LIDAR



COMMON USE EQUIPMENT



MOBILE/APP



POS



THERMAL



WEATHER



CAMERAS



SMS



CARPAK DATA



CRM



FIDS



SURVEY



WEB



PEOPLE COUNTERS



BLE



BEACONS



EMAIL

**11 Billion**

data points processed  
everyday

**90,000+**

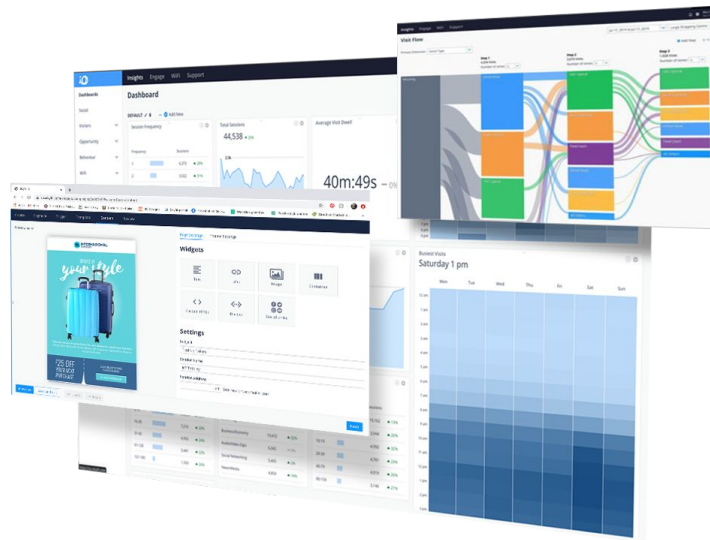
connected IoT devices

**13,000+**

venues served

**200+**

data integrations



Real use only

# USES FOR SKYFII ACROSS KEY VERTICALS

We provide data analytics solutions to over **13,000 venues in 3 core regions: APAC, EMEA, AMERICAS**

## COMMERCIAL PROPERTY



- Occupancy Management
- Space Utilisation
- HVAC Optimisation
- Visitor Registration & Contact Tracing



## RETAIL & RETAIL PROPERTY



- Marketing Automation
- Retail Planning
- Trade Area Analysis
- Customer Sentiment & Satisfaction
- Sales Conversion



## TRANSPORTATION HUBS



- Queue Management
- Passenger Flow Management
- Workforce Management
- Retail Conversion



## SPORTING STADIA & EVENTS



- Fan Engagement
- Crowd Analytics
- Event Attribution & Performance Analysis
- Retail Conversion
- Sponsorship & Advertising



## GOVT. AGENCIES & CULTURAL INST.



- Exhibition Planning
- Occupancy Management
- Visitor Engagement
- Retail Conversion
- Event & Exhibition Attribution & Performance



omni  
use  
anal

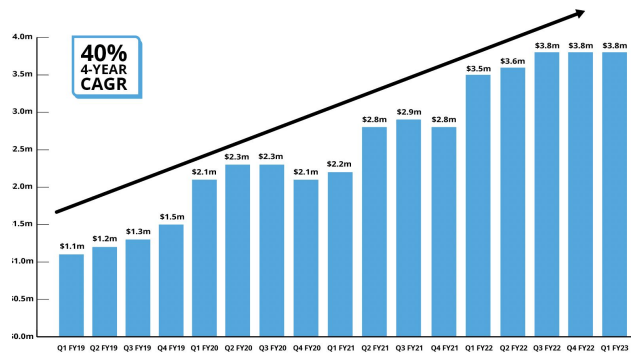


Internal use only

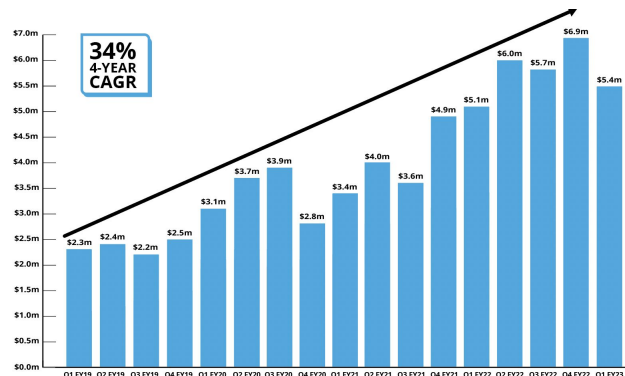
# FINANCIAL & OPERATING HIGHLIGHTS

# QUARTERLY PERFORMANCE SUMMARY

	Q1 FY23	Q1 FY22	PCP
Total Operating Revenue	\$5.4m	\$5.1m	7%
Recurring Revenue	\$3.8m	\$3.5m	11%
ARR <sup>1</sup>	\$15.7m	\$14.2m	11%
Cash at Bank	\$4.3m	\$5.8m	-26%
Net Operating Cash Flow	-\$0.9m	-\$2.9m	333%
Cash Receipts	\$6.4m	\$4.1m	54%
Churn	<3%	<3%	-



Recurring Revenue



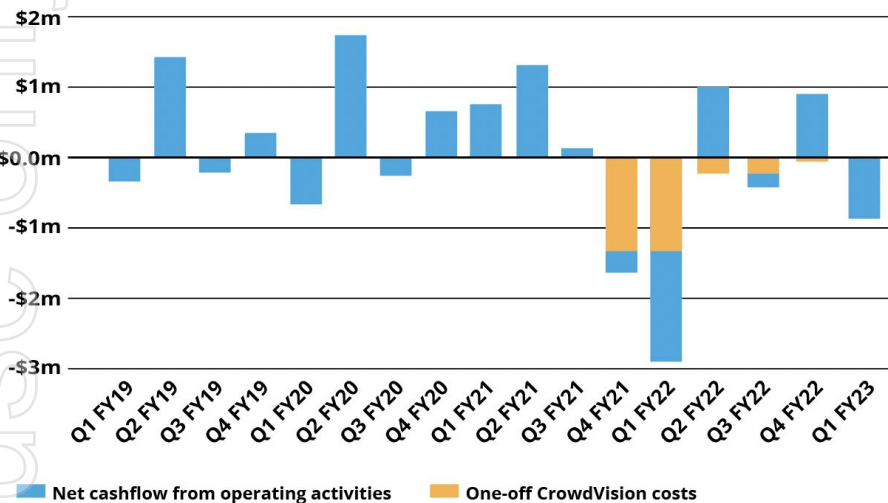
Total Operating Revenue

<sup>1</sup> Annual Recurring Revenue (ARR) based on contracted recurring revenues as at March 2022, inclusive of temporary suspensions as a result of COVID-19 and contracted revenues from the acquisition of CrowdVision announced 6 April 2021.

Internal use only

# NET CASH FLOW FROM OPERATING ACTIVITIES

Net cashflows from operating activities



In Q1 FY23 the Company generated cash outflow from operating activities of \$0.87m, which was exclusive of the impacts of capitalisation of employee, contractor and other expenditure attributable to software development.

Net cash reduced during the quarter primarily due to

- delays in key annual renewals in EMEA and Northern American region
- a seasonally slower start to the FY due to extended summer break in the Northern Hemisphere.
- impact of a one-off credit note to a large US based Casino
- slower than anticipated working capital cycle

Despite the cash burn in the quarter, the strong growth pipeline, growing ARR based, cost saving initiatives and the recent contract wins ensure Skyfii remains confident of achieving sustainable positive cash flow generation in 2H FY23.

1

<sup>1</sup> Settlement of CrowdVision Acquisition: As part of the completion of the CrowdVision acquisition, a total of \$3.1m in non-recurring payments were required to settle CrowdVision's legacy net debts (including aged payables). The \$3.1m cost was offset against the total purchase price paid to the vendors of CrowdVision. However, under the accounting standards, these payments were required to be classified as cash outflows from operating activities. The outflows of \$3.1m have to date been settled/paid as follows: \$1.3m in Q4 FY21, \$1.3m in Q1 FY22, \$220k in Q2 FY22, \$210k in Q3 FY22 and \$70k in Q4 FY22.

# CONTRACT WINS

**>75%**

of new contract wins secured outside APAC

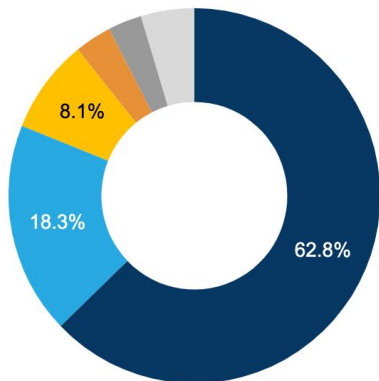
**\$3.1m**

TCV Contracted in Q1 FY23

**79%**

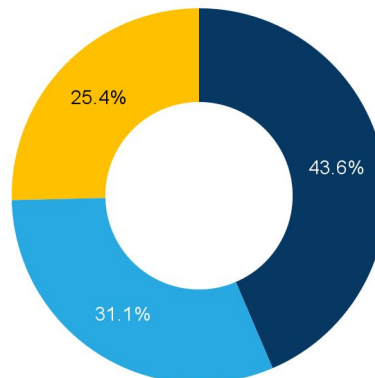
of deals closed won were created in the last 6 months

By Vertical



- Travel Hub
- Retail Property
- Retail
- Commercial Office Towers
- Government and Cultural Venues
- Other

By Region



- EMEA
- AMERICAS
- APAC

<sup>1</sup>Total Contract Value (TCV) refers to the entire revenue generated from a contract and is inclusive of both recurring and non-recurring revenues. Skyfii's typical contract term is ~36 months.

Internal use only



## McDonald's USA signs initial \$2m contract for industry first solution

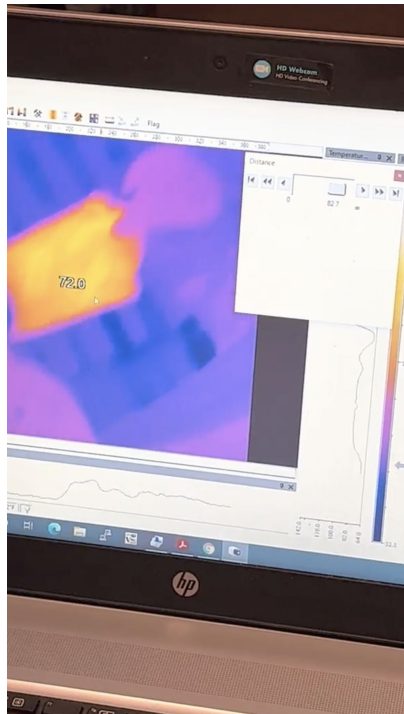
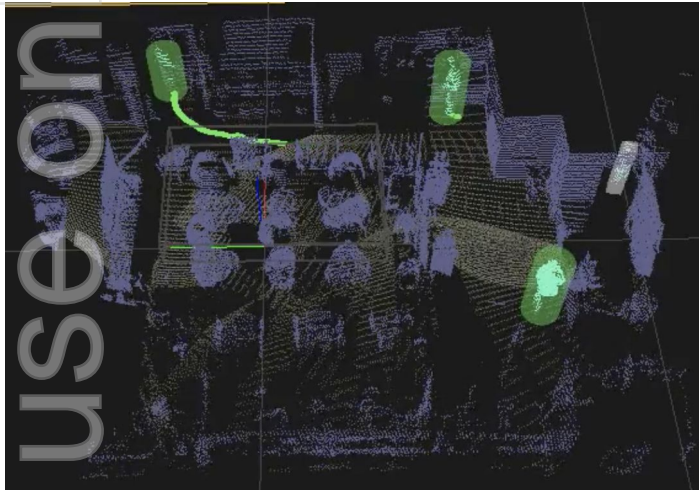


- Initial three-year contract with Total Contract Value of A\$2 million
- Skyfii will provide McDonald's with an industry first real-time whole of restaurant monitoring and analysis solution focused on improving restaurant operations, service efficiency, food freshness and customer satisfaction
- Solution is currently live in four McDonald's stores with a further four to follow under the initial contract

**Mike Cramer, McDonald's Director, Operations Advanced Analytics commented:**

"We are excited to be working with Skyfii to develop a system that allows us to monitor our restaurant service channels and the efficiency of our food preparation in real-time. With an increasing array of order points such as in store, drive-through and in-app purchases, ensuring we maintain our service and product quality is paramount. The data provided by Skyfii should help enhance our food preparation cycle, ensuring the freshness of our food to the customer and ultimately delivering increased levels of customer satisfaction"

# Real time analytics to measure service delivery channels and food preparation efficiency



use only  
mal

Internal use only

# FUTURE OUTLOOK



## \$31m IN ADVANCED STAGE DEAL PIPELINE

- 61% of sales opportunities in the pipeline are outside of APAC
- >22% of pipeline has been generated in the last 3 months
- Promising pipeline contribution from emerging verticals: commercial office towers (6%) and government and cultural venues (5%)
- \$15.6m in TCV converted from pipeline to contracts in past 12 months
- Core verticals of retail property and airports continue to drive new contract wins

### 12-Month Rolling Pipeline



<sup>1</sup> Client Evaluation - a proof of concept, the customer understands the value proposition of the offering and is expressing interest to proceed but requires more time to evaluate or requires internal budget approval on the proposal before proceeding any further.

<sup>2</sup> Contract Negotiation - sales have firming up pricing and issued it to the customer, the customer has provided an indication that they wish to proceed and we are in the process of negotiating the final commercial terms.

<sup>3</sup> Committed - the customer has committed to the commercial terms in writing but is not ready to be invoiced yet.

## OUTLOOK & STRATEGY



The Company expects to deliver another year of strong revenue growth and expects ARR to grow to >\$20m during FY23



Resolution of supply chain issues and delivery challenges that have carried over from 2H FY22 and recognition of delayed project revenues



Focus on revenue conversion in the rapidly growing North America and EMEA region



Continued business development focussed on key verticals including airports, stadiums, retail properties and also quick service restaurants



Achieve a sustainable cash flow breakeven position during 2H FY23



Costs rationalisation and efficiency initiatives, including offshoring of talent, to deliver material cost savings and maintain margins

## IMPORTANT NOTICE & DISCLAIMER

This presentation has been prepared by Skyfii Limited (ACN 009 264 699) (Skyfii or the Company). The information contained in this presentation is current at the date of this presentation. The information is a summary overview of the current activities of the Company and does not purport to be all inclusive or to contain all the information that a prospective investor may require in evaluating a possible investment. This presentation is for general information purposes and is not intended to be and does not constitute a prospectus, product disclosure statement, pathfinder document or other disclosure document for the purposes of the Corporations Act and has not been, and is not required to be, lodged with the Australian Securities & Investments Commission. It is to be read in conjunction with the Company's disclosures lodged with the Australian Securities Exchange.

The material contained in this presentation is not, and should not be considered as, financial product or investment advice. This presentation is not (and nothing in it should be construed as) an offer, invitation, solicitation or recommendation with respect to the subscription for, purchase or sale of any security in any jurisdiction, and neither this document nor anything in it shall form the basis of any contract or commitment. This presentation is not intended to be relied upon as advice to investors or potential investors and does not take into account the investment objectives, financial situation or needs of any particular investor which need to be considered, with or without professional advice, when deciding whether or not an investment is appropriate.

This presentation may contain information as to past performance of the Company. Such information is given for illustrative purposes only, and is not – and should not be relied upon as – an indication of future performance of the Company. The historical information in this presentation is, or is based upon, information contained in previous announcements made by the Company to the market.

This document contains certain "forward-looking statements". The words "anticipate", "believe", "expect", "project", "forecast", "estimate", "outlook", "upside", "likely", "intend", "should", "could", "may", "target", "plan" and other similar expressions are intended to identify forward-looking statements. Indications of, and guidance on, future earnings and financial position and performance are also forward-looking statements, as are statements regarding the Company's plans and strategies and the development of the market.

Such forward-looking statements are not guarantees of future performance and involve known and unknown risks, uncertainties and other factors, many of which are beyond the control of the Company, which may cause actual results to differ materially from those expressed or implied in such statements.

The Company cannot give any assurance or guarantee that the assumptions upon which management based its forward-looking statements will prove to be correct or exhaustive beyond the date of its making, or that the Company's business and operations will not be affected by other factors not currently foreseeable by management or beyond its control. Such forward-looking statements only speak as at the date of this announcement and the Company assumes no obligation to update such information. The release, publication or distribution of this presentation in jurisdictions outside Australia may be restricted by law. Any failure to comply with such restrictions may constitute a violation of applicable securities laws.

All references to dollars are to Australian currency unless otherwise stated.

To the maximum extent permitted by law, the Company makes no representation or warranty (express or implied) as to the accuracy, reliability or completeness of any information contained in this document. To the maximum extent permitted by law, the Company shall have no liability (including liability to any person by reason of negligence or negligent misrepresentation) for any statements, opinions or information (express or implied), arising out of, contained in or derived from, or for any omissions from this document, except liability under statute that cannot be excluded.



Media

## JOHN RANKIN

Chief Operating Officer, *Skyfii*

phone: +61 2 8188 1188

email: [john.rankin@skyfii.com](mailto:john.rankin@skyfii.com)



Investors

## CRAIG SAINSBURY

*Automic Markets*

phone: +61 428 550 499

email: [craig.sainsbury@automicgroup.com.au](mailto:craig.sainsbury@automicgroup.com.au)