



29 August 2022

SIGNIFICANT NEW OXIDE MINERALISATION DISCOVERED AT MILLROSE

NEW OXIDE GOLD RESULTS EXTEND MINERALISATION 350M NORTH OF EXISTING MINERAL RESOURCE

Key Points:

- **First pass drilling yields new oxide gold discovery, extending gold mineralisation 350m north of the current Mineral Resource. Peak results include:**
 - **MRRC228: 37m @ 1.6g/t Au from 58m (incl 9m @ 5.6g/t Au from 86m) – 200m north of Resource**
 - **MRRC234: 53m @ 1.1g/t Au from 44m (incl 13m @ 3.3g/t Au from 84m) – 120m north of Resource**
 - **MRRC238: 12m @ 4.9g/t Au from 64m (incl 4m @ 13.6g/t Au from 68m) – 80m north of Resource**
- **Further discovery of new oxide lenses directly above the Millrose Mineral Resource**
- **RC and diamond infill drilling at Millrose continues to confirm the high-grade nature of the primary Millrose North mineralisation, with peak results including:**
 - **MRRC148D: 28m @ 2.0g/t Au from 101m**
 - **MRRC146D: 21m @ 2.0g/t Au from 168m**
 - **MRDD038: 9.1m @ 2.6g/t Au from 178.8m**
- **Three diamond holes successfully tested the interpreted ore zone up to 90m down dip from the current Mineral Resource and beneath MRDD008 (8.1m @ 14.6g/t Au from 215m) – assays expected next week**
- **Both RC rigs are now systematically mapping the northern and southern extent of the 13km shear structure**

Introduction

Strickland Metals Limited (ASX:STK) (**Strickland** or the **Company**) is pleased to release recently received assays from its flagship, wholly-owned Millrose gold project on the Yandal greenstone belt in Western Australia.

Management Comment

Andrew Bray, Chief Executive Officer, said: “We’re very pleased to provide further assays from our flagship Millrose gold project. These excellent results continue to demonstrate the potential large scale of Millrose, with Strickland’s systematic exploration programs to date having significantly grown the mineralisation footprint.

There is an important, emerging story around the intersection of increasingly impressive shallow oxide gold results. Drilling along strike from the current Mineral Resource has intersected a coherent zone over 350m to the north, with mineralisation remaining entirely open to the north and west (up-dip from the results released today). New lenses have also been discovered directly above Millrose.

None of these results are included in the current Mineral Resource model.

Discovery of additional shallow oxide mineralisation (above the existing fresh rock mineralisation) can potentially be of critical importance in mine development, allowing for a pit to be driven deeper in optimisation scenarios. The Company has also identified another ~400m strike of known oxide gold mineralisation from historic aircore drilling at Millrose Central, which is also not included in the current Mineral Resource. A number of RC holes have been drilled in this zone, with assays expected in late September / early October.

We’ve also successfully drilled three deeper diamond holes underneath the current Mineral Resource, following up on the very impressive intersection in MRDD008 (8.1m @ 14.6g/t Au from 215m, within a broader mineralised envelope of 95m @ 2.2g/t Au from 176.5m). This drilling suggests strong potential for further high-grade depth extensions.

Finally, both RC rigs are systematically testing the shear structure to the north and south of the main Millrose domain. Fence lines of short RC holes on 200m step-outs are being drilled to accurately map the shear structure. This program is expected to be completed during September 2022, at which point the Company will return to the most promising areas for further follow-up drilling.

New Oxide Discovery North of Millrose

Initial wide-spaced drilling north of the Millrose Mineral Resource has yielded an exciting new oxide gold discovery. These results are above the high-grade, north-plunging primary Millrose ore zone, and extend mineralisation at least 350m to the north. Mineralisation is also entirely open to the west. Results include:

- **MRRC228:** 37m @ 1.6 g/t from 58m, including 9m @ 5.6 g/t from 86m (incl. 3m @ 12.3 g/t from 86m);
- **MRRC234:** 53m @ 1.1 g/t from 44m (incl. 13m @ 3.3 g/t from 84m)
- **MRRC238:** 12m @ 4.9 g/t from 64m (incl. 4m @ 13.6 g/t from 68m)
- **MRRC224:** 4m @ 2.3 g/t from 40m
- **MRRC240:** 4m @ 1.3 g/t from 69m.

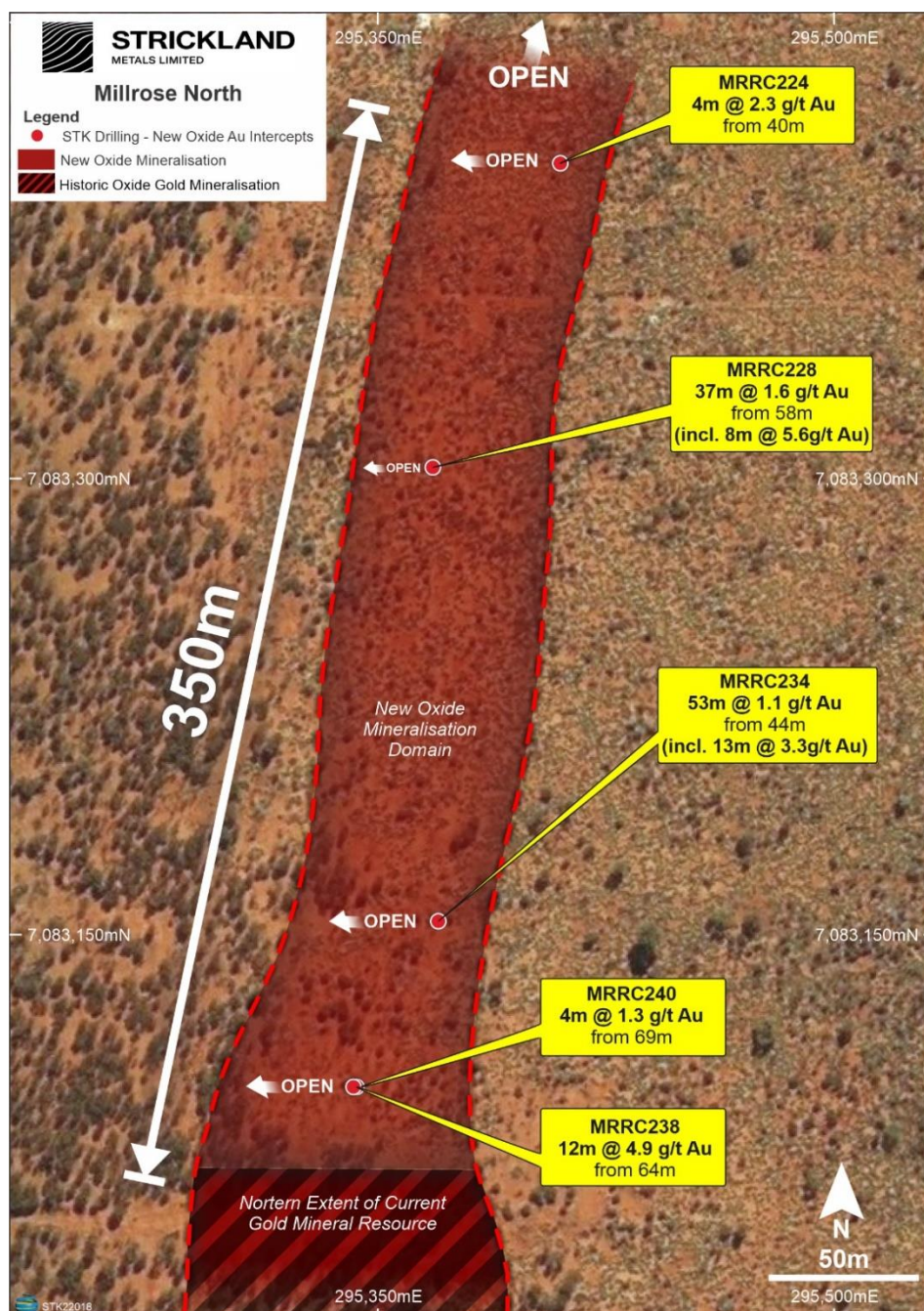


Figure 1: New oxide gold discovery north of current Mineral Resource

The Company will undertake infill drilling in due course with a view to incorporating this mineralisation into an updated Mineral Resource in 2023. Additional drilling will also test for extensions to the mineralisation to the north and west. The new oxide gold mineralisation extends northwards to the previously discovered fresh rock zone delineated by MRRC130 (8m @ 4g/t Au from 104m) announced to the ASX on 7 July 2022. The Company has completed two diamond holes targeting further fresh rock intersections around MRRC130 (assays pending). Additional infill drilling will occur in this area with a view to incorporating the results into an updated Mineral Resource in 2023.

New Oxide Lenses Discovered Above Millrose Mineral Resource

None of the below results are included in the current Mineral Resource.

Drilling has also intersected new shallow oxide gold lenses above the existing resource:

- **MRRC139:** 3m @ 14.8 g/t from 8m
- **MRRC090:** 7m @ 1 g/t Au from 4m
- **MRRC009:** 11m @ 2.4 g/t Au from 58m (incl 2m @ 8.6g/t Au from 65m)
- **MRRC144:** 2m @ 1.2 g/t from 43m – extends current wireframe by 20m west
- **MRRC145:** 5m @ 3.4 g/t from 82m

This follows on from previously reported oxide gold results¹:

- **MRRC142D:** 10m @ 13 g/t from 66m (incl. 6m @ 19.8 g/t from 66m) – extends current wireframe 80m south
- **MRRC087:** 2m @ 10.9 g/t from 58m

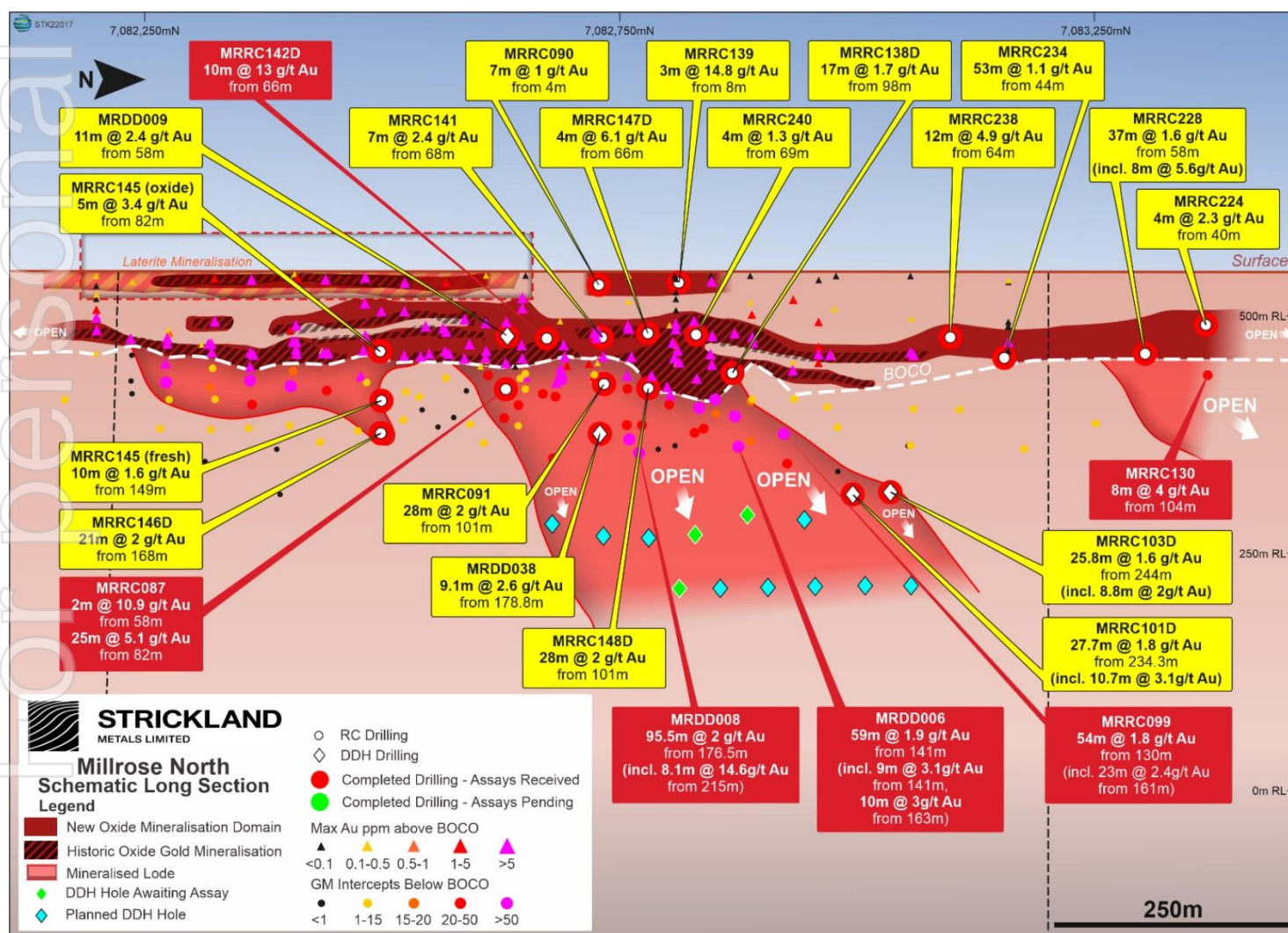


Figure 2: Long section of Millrose North and newly discovered oxide gold mineralisation to the north

¹ See announcement dated 26 April 2022, 10 June 2022 and 7 July 2022.

Strickland's focus at Millrose North to date has been fourfold:

1. Define the extents of the laterite mineralisation (see announcement dated 26 May 2022)
2. Identify any additional shallow oxide gold above the current Mineral Resource and along strike
3. Increase confidence in the existing Mineral Resource
4. Locate depth extensions to the Mineral Resource

These four areas have the potential to significantly enhance the economic case around the development of Millrose North. In all four areas, Strickland's success has exceeded expectations.

Millrose North Drilling

Resource drilling has successfully mapped the northern extents of the north-plunging, high-grade Millrose North ore zone. Results include:

- **MRRC148D:** 28m @ 2.0g/t Au from 101m
- **MRRC146D:** 21m @ 2.0g/t Au from 168m
- **MRRC101D:** 27.7m @ 1.8g/t Au from 234.3m (incl 10.7m @ 3.1g/t Au)
- **MRRC103D:** 25.8m @ 1.6g/t Au from 244m (incl 8.8m @ 2.0g/t Au)
- **MRDD038:** 9.1m @ 2.6g/t Au from 178.8m
- **MRRC145:** 10m @ 1.6g/t Au from 149m
- **MRRC100:** 24m @ 0.8g/t Au from 145m
- **MRRC104D:** 11m @ 1.1g/t Au from 165m
- **MRRC107:** 13m @ 1.2g/t Au from 187m
- **MRRC106:** 20m @ 0.6g/t Au from 203m.

Three deeper diamond holes have been drilled beneath the current Mineral Resource (see Figure 2), targeting extensions to the very high grades intersected in hole MRDD008 (8.1m @ 14.6g/t Au from 215m), with a further 9 diamond holes planned to test the full extent of this high-grade lode.

All holes successfully intersected the interpreted ore zone, suggesting very strong potential for further depth extensions. Assays from these holes are expected next week.

This infill and extensional drilling will be incorporated into an updated Mineral Resource during 2023.

Ongoing Exploration

Both RC rigs are now successfully mapping continuation of Millrose shear structure to the north and south over a strike length of 13km. The program consists of fence lines of short RC holes on 200m north-south step-outs. The program is designed to accurately locate the shear zone, before returning to properly test the structure, with deeper step-back holes.

Historic drilling south of the existing Millrose resource focused largely on an interpreted dextral offset in the magnetics (Millrose SW). Recent follow-up drilling by Strickland identified this mineralisation to be largely associated with a weaker secondary mineralised structure, developed in the footwall (potential dilation due to a north-west trending structure – see Figure 3), as opposed to it being associated with the main Millrose shear structure. This development further emphasises that the main mineralised shear structure, outside of the main Millrose resource, has not been properly tested.

Upon completion of this part of the program (expected during September), drill rigs will return to the most promising areas for follow-up and infill drilling.

For personal use only

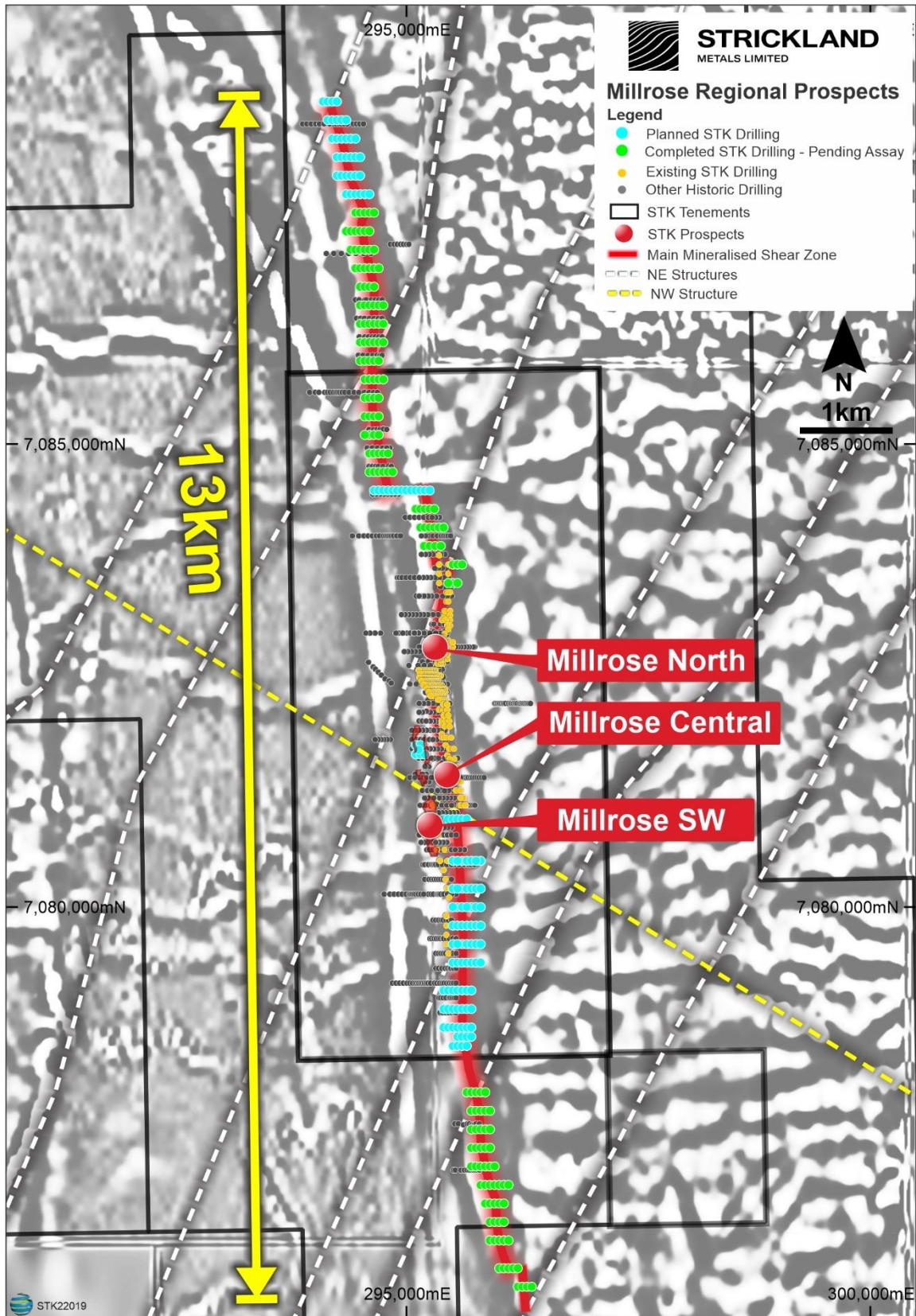


Figure 3: Regional RC drilling designed to accurately map the shear structure

This ASX announcement was approved and authorised for release by the Chief Executive Officer of the Company.

For more information contact

Andrew Bray

Chief Executive Officer

Phone: +61 (8) 6317 9875

info@stricklandmetals.com.au

stricklandmetals.com.au

Competent Person Statement

The information in this report that relates to Exploration Results or Mineral Resources is based on information compiled or reviewed by Mr Richard Pugh who is the Strickland Metals Limited Geology Manager and is a current Member of the Australian Institute of Geoscientists (AIG). Mr Richard Pugh has sufficient experience, which is relevant to the style of mineralisation and types of deposit under consideration and to the activities undertaken, to qualify as a Competent Person as defined in the 2012 Edition of the "Australasian Code of Reporting of Exploration Results, Mineral Resources and Ore Reserves". Mr Pugh consents to the inclusion in the report of the matters based on the information in the form and context in which it appears.

For personal use

Appendix A – Significant Intercepts

Table 1: Millrose North - Oxide Au Intercepts

Hole ID	Coordinates (MGA94 Zone 51)			Hole Type	Total Depth (m)	Depth From (m)	Depth To (m)	Intercept (m)	Grade (g/t)	Grade Summary/Comments	
	Easting (m)	Northing (m)	RL (m)								
MRRC224	295430	7083400	544	RC	180	40	44	4	2.3	4 metres @ 2.3g/t Au from 40 metres	
MRRC228	295410	7083300	544	RC	156	58	95	37	1.6	37 metres @ 1.6g/t Au from 58 metres (incl. 9 metres @ 5.6g/t)	
MRRC234	295410	7083150	544	RC	150	44	97	53	1.1	53 metres @ 1.1g/t Au from 44 metres (including 13 metres @ 3.3g/t)	
MRRC238	295380	7083100	544	RC	138	64	76	12	4.9	12 metres @ 4.9g/t Au from 64 metres (incl. 4 metres @ 13.6g/t)	
MRRC141	295315	7082730	544	RC	130	68	75	7	2.4	7 metres @ 2.4g/t Au from 68 metres	
MRRC240	295400	7083100	544	RC	174	69	73	4	1.3	4 metres @ 1.3g/t Au from 69 metres	
MRDD027	295355	7082870	544	DDH	199.6	65.1	71.1	6	1.3	6 metres @ 1.3g/t Au from 65.1 metres	
MRRC088	295350	7082830	544	RC	179	67	70	3	4.3	3 metres @ 4.3g/t Au from 67 metres	
MRRC089	295370	7082830	544	RC	210	50	57	7	1.5	7 metres @ 1.5g/t Au from 50 metres	
MRRC147D	295350	7082780	544	DDH	222.3		66	70	4	6.1	4 metres @ 6.1g/t Au from 66 metres
							102	123	21	1.1	21 metres @ 1.1g/t Au from 102 metres
MRRC139	295330	7082810	544	RC	64	8	11	3	14.8	3 metres @ 14.8g/t Au from 8 metres	
MRRC148D	295370	7082780	544	RC	232.8	101	129	28	2	28 metres @ 2g/t Au from 101 metres	
MRRC090	295335	7082730	544	RC	178	4	11	7	1	7 metres @ 1g/t Au from 4 metres	
MRRC091	295355	7082730	544	RC	178	93	124	31	1.8	31 metres @ 1.8g/t Au from 93 metres	
MRRC087	295350	7082630	544	RC	190	58	60	2	10.9	2 metres @ 10.9g/t Au from 58 metres	
MRDD009	295370	7082630	544	DDH	229.9	58	69	11	2.4	11 metres @ 2.4g/t Au from 58 metres	
MRRC144	295330	7082500	544	RC	64	43	45	2	1.2	2 metres @ 1.2g/t Au from 43 metres	
MRRC145	295350	7082500	544	RC	190	82	87	5	3.4	5 metres @ 3.4g/t Au from 82 metres	
MRRC138D	295370	7082870	544	DDH	222	98	115	17	1.7	17 metres @ 1.7g/t Au from 98 metres	

Table2: Millrose North - Fresh Au Intercepts

Hole ID	Coordinates (MGA94 Zone 51)			Hole Type	Total Depth (m)	Depth From (m)	Depth To (m)	Intercept (m)	Grade (g/t)	Grade Summary/Comments
	Easting (m)	Northing (m)	RL (m)							
MRRC103D	295470	7083040	544	DDH	336.3	244	269.8	25.8	1.6	25.8 metres @ 1.6g/t Au from 244 metres (incl. 8.8 metres @ 2g/t)
MRRC101D	295450	7083000	544	DDH	342.1	234.3	262	27.7	1.8	27.7 metres @ 1.8g/t Au from 234.3 metres (incl. 10.7 metres @ 3.1g/t)
MRDD038	295375	7082730	544	DDH	232.8	178.8	187.9	9.1	2.6	9.1 metres @ 2.6g/t Au from 178.8 metres
MRRC145	295350	7082500	544	RC	190	149	159	10	1.6	10 metres @ 1.6g/t Au from 149 metres
MRRC146D	295370	7082500	544	DDH	228.3	168	189	21	2	21 metres @ 2g/t Au from 168 metres
MRRC100	295410	7082950	544	RC	208	145	169	24	0.8	24 metres @ 0.8g/t Au from 145 metres
MRRC104D	295420	7083100	544	DDH	288.2	165	176	11	1.1	11 metres @ 1.1g/t Au from 165 metres
MRRC107	295470	7083200	544	RC	226	187	197	13	1.2	13 metres @ 1.2g/t Au from 187 metres
MRRC106	295470	7083150	544	RC	238	203	223	20	0.6	20 metres @ 0.6g/t Au from 203 metres

Appendix B

JORC Table 1

Section 1 Sampling Techniques and Data

(Criteria in this section apply to all succeeding sections.)

Criteria	JORC Code explanation	Commentary
Sampling techniques	<ul style="list-style-type: none"> • <i>Nature and quality of sampling (eg cut channels, random chips, or specific specialised industry standard measurement tools appropriate to the minerals under investigation, such as down hole gamma sondes, or handheld XRF instruments, etc). These examples should not be taken as limiting the broad meaning of sampling.</i> • <i>Include reference to measures taken to ensure sample representivity and the appropriate calibration of any measurement tools or systems used.</i> • <i>Aspects of the determination of mineralisation that are Material to the Public Report.</i> • <i>In cases where 'industry standard' work has been done this would be relatively simple (eg 'reverse circulation drilling was used to obtain 1 m samples from which 3 kg was pulverised to produce a 30 g charge for fire assay'). In other cases more explanation may be required, such as where there is coarse gold that has inherent sampling problems. Unusual commodities or mineralisation types (eg submarine nodules) may warrant disclosure of detailed information.</i> 	<p>Historic Drilling</p> <ul style="list-style-type: none"> • Drilling across the Millrose Gold Mines (MGM) E53/1304 tenement, consists of 24 RAB holes for 1,361 metres, 857 aircore holes for 71,585 metres, 158 RC holes for 24,671 metres and 46 diamond tail holes for 4,835 metres. • Historic (pre-STK) RC samples were collected at 1m intervals and the material riffle split at time of drilling to produce a representative sample weighing approximately 2-3kg. Historic (pre-STK) Diamond core (NQ2) was cut in half and sampled every 1m to provide a representative sample of approximately 2kg. • RC and core sample material were dispatched to the laboratories of either ALS or Genalysis or both for gold analysis. The whole sample was pulverised to produce a representative charge for gold assay by either aqua regia with carbon rod AAS finish (0.01 g/t detection limit), or fire assay (0.01 g/t detection limit). In some instances a greater charge was produced to undertake a cyanide leach bottle roll analysis for gold. No visible gold was seen in the core, and the general tenor of the gold results indicated that coarse gold is not typically present. <p>STK Drilling</p> <p>RC</p> <ul style="list-style-type: none"> • 2-3 kg samples were split from dry 1 m bulk samples. The sample was initially collected from the cyclone in an inline collection box, with independent upper and lower shutters. Once the full metre was drilled to completion, the drill bit was lifted off the bottom of the hole, creating a gap between samples; ensuring the entirety of the 1 m sample was collected, and over-drilling did not occur. When the gap of air entered the collection box, the top shutter was closed off. Once the top shutter was closed, the bottom shutter was opened, dropping the sample under gravity over a cone splitter.

Criteria	JORC Code explanation	Commentary
		<ul style="list-style-type: none"> • Two even 2 – 3 kg duplicate sample splits, from the A- and B-chutes of the splitter, were collected at the same time for each metre, with the remaining reject bulk sample being collected in labelled green bags directly below the cyclone, minimising external contamination. • Original sample bags were consistently collected from the A-chute, whilst duplicate sample splits were collected from the B-chute. During the sample collection process, the original and duplicate calico sample splits, and green bag of bulk reject sample were weighed to test for sample splitting bias and sample recovery. • Green bags were then placed in neat lines on the ground, with tops folded over to avoid contamination. Duplicate B-chute sample bags are retained and stored on site for follow up analysis and test work. • In mineralised zones, the original A-chute sample split was sent to the laboratory for analysis. In non-mineralised ‘waste’ zones, a 4 m composite scoop sample was collected from the green bags and the A-chute bag retained on site for follow up analysis test work. All composite intervals over 0.1 g/t Au were resampled at 1 m intervals using the original A-chute bag from the cyclone splitter. • QA samples were inserted at a combined ratio of 1:20 throughout. Field duplicates were collected at a 1:40 ratio from the B-chute of the cone splitter at the same time as the original sample was collected from the A-chute. OREAS certified reference material (CRM) was inserted at a ratio of 1:40. The grade ranges of the CRMs were selected based on grade populations and economic grade ranges. The reference material type was selected based on the geology, weathering, and analysis method of the sample. • The cyclone was cleaned after each rod, at the base of oxidation, and when deemed necessary by the geologist to minimise contamination of samples. Sample condition was recorded for bias analysis. The cyclone was balanced at the start of each rod and checked after each sample to avoid split bias. Dual air-vibrators on the cyclone transfer box were utilised, when necessary, to aid sample throughput. Vibrators were placed on opposite sides of the

Criteria	JORC Code explanation	Commentary
		<p>cyclone and perpendicular to the chutes to avoid vibration-induced splitting bias.</p> <p>Diamond Drilling</p> <ul style="list-style-type: none"> • Diamond core samples were collected at geologically defined intervals, with a minimum sample length of 0.3 m and maximum of 1.2 m. Samples were cut using an automated variable-speed diamond saw, with half-core submitted for analysis. • OREAS certified reference material (CRM) was inserted at a ratio of 1:20 throughout sampling. The grade ranges of the CRMs were selected based on grade populations and economic grade ranges. The reference material type was selected based on the geology, weathering, and analysis method of the sample. • Density measurements were collected as per Water Displacement Method 3 (Lipton, 2001) with paraffin wax coatings used for oxide and porous samples. Selected core samples were 0.1 – 0.2 m in size. Aluminium cylinders of 0.1 and 0.2 m in length, with known mass and density were measured at regular intervals at a ratio of 1:20, as a reference material. Duplicate sample weights were measured in fresh rock at a ratio of 1:20. <p>Handheld instruments, such as an Olympus Vanta pXRF, Terraplus KT-10 meter, and ASD TerraSpec 4 were used to aid geological interpretation. CRMs were tested at regular intervals at a ratio of 1:20.</p>

Criteria	JORC Code explanation	Commentary
		<p>To assist with understanding the main controls on gold mineralisation, Strickland undertook micro-XRF scanning of core samples (courtesy of Portable Spectral Services) across Millrose to map the relationship between gold, alteration, structure, and geochemistry (Figure 2). This technique scanned a 4cm by 2cm wide piece of core to map the various elements present. Several samples from diamond holes MRDD002 and MRDD008 (Millrose North) and several samples from MRDD011 (Millrose Central) were analysed as part of this process.</p> <p>Micro X-ray Fluorescence spectroscopy (μXRF) is a rapid and non-destructive technique used to quickly acquire qualitative and quantitative geochemical data at high spatial resolution (i.e. μm scale). Micro-XRF is an ideal method for element mapping large samples (19 x 16cm) with little to no sample preparation. Elements ranging from sodium (Na) to uranium (U) can be measured with quantification limits down to parts per million. These qualitative element maps show the spatial variation and abundance of major, minor and trace elements and enable small-scale textural and compositional features to be identified, including those that are not visibly discernible.</p>
Drilling techniques	<ul style="list-style-type: none"> • <i>Drill type (eg core, reverse circulation, open-hole hammer, rotary air blast, auger, Bangka, sonic, etc) and details (eg core diameter, triple or standard tube, depth of diamond tails, face-sampling bit or other type, whether core is orientated and if so, by what method, etc).</i> 	<p>Historic Drilling</p> <p>RC drilling utilised a nominal 5 ½ inch face sampling hammer whilst all diamond drilling was NQ2 having a nominal 2inch diameter. All diamond drilling was as tails from 45 RC and 1 AC holes. Selected diamond holes had core orientated using a spear method every 3m.</p> <p>STK Drilling</p> <ul style="list-style-type: none"> • RC drilling was undertaken by Ranger Drilling, using a truck-mounted Hydco 350RC Rig with a 1350 cfm @ 500 psi on-board compressor, a 1150 cfm on-board Booster, and a truck-mounted Sullair 900 cfm @ 350 psi Auxiliary Compressor. • RC holes were drilled with a 5 ½” hammer. Maximum RC hole depth was 250 m. • Diamond Drilling was undertaken by Terra Drilling using a truck-mounted KWL1600 drill rig.

Criteria	JORC Code explanation	Commentary
		<ul style="list-style-type: none"> • Diamond coring was undertaken predominantly as NQ sizing, with PQ and HQ utilised to maximise recoveries where necessary. Triple-tubing was utilised to maximise recovery. • REFLEX Sprint IQ North-Seeking Gyro was used for downhole dip and azimuth calculation. • REFLEX ACT Orientation tools were used for core orientation.
<p><i>Drill sample recovery</i></p>	<ul style="list-style-type: none"> • <i>Method of recording and assessing core and chip sample recoveries and results assessed.</i> • <i>Measures taken to maximise sample recovery and ensure representative nature of the samples.</i> • <i>Whether a relationship exists between sample recovery and grade and whether sample bias may have occurred due to preferential loss/gain of fine/coarse material.</i> 	<p>Historic Drilling</p> <ul style="list-style-type: none"> • 1m intervals of RC drill chip material were weighed to estimate a weight recovery whilst diamond core recovery was measured. RC and diamond recoveries were recorded in the database. No significant RC chip or core loss issue exists, and most sampled intervals record better than 90% recovery. • RC drilling used auxiliary booster(s) to ensure that sample return was not unduly affected by the ingress of water however, some wet samples were recorded. • There appears to be no potential sample bias as diamond drilling returned similar grades and similar widths compared to the RC drilling. <p>STK Drilling</p> <p>RC</p> <ul style="list-style-type: none"> • During the RC sample collection process, the original and duplicate cone split samples, and green bag reject bulk samples were weighed to test for bias and sample recoveries. The majority of this work was undertaken in ore zones. • Once drilling reached fresh rock, a fine mist of water was used to suppress dust and limit loss of fines through the cyclone chimney. • At the end of each metre, the bit was lifted off the bottom of hole to separate each metre drilled. • The majority of samples were of good quality, with ground water having minimal effect on sample quality or recovery.

Criteria	JORC Code explanation	Commentary
		<ul style="list-style-type: none"> From the collection of recovery data, no identifiable bias exists. <p>Diamond Drilling</p> <ul style="list-style-type: none"> Diamond core samples are considered dry. Appropriate tube diameter was used (NQ, HQ or PQ) depending on ground competency. Triple-tubing was utilised to maximise recoveries. Sample Recovery is recorded every run and is generally above 98 %, except for very broken ground. Core was cut in half, with the same half of core submitted for assay. From collection of recovery data, no identifiable bias exists.
Logging	<ul style="list-style-type: none"> Whether core and chip samples have been geologically and geotechnically logged to a level of detail to support appropriate Mineral Resource estimation, mining studies and metallurgical studies. Whether logging is qualitative or quantitative in nature. Core (or costean, channel, etc) photography. The total length and percentage of the relevant intersections logged. 	<p>Historic Drilling</p> <ul style="list-style-type: none"> Geological core logging to a resolution of 5cm and RC chip logging every 1m were undertaken with a record kept of, inter alia, colour, lithology, weathering, grain size, mineralisation, alteration, etc. Diamond core is stored at the Millrose homestead. The data is believed to be of an appropriate level of detail to support a resource estimation. Logging was qualitative. Diamond core was photographed. All drilled intervals were logged and recorded. <p>STK Drilling</p> <p>Logging of lithology, structure, alteration, veining, mineralization, oxidation state, weathering, mineralogy, colour, magnetic susceptibility and pXRF geochemistry were recorded. Select samples were analysed by ASD SWIR/NIR using a TerraSpec 4.</p> <p>Logging was both qualitative and quantitative in nature.</p> <p>RC</p> <ul style="list-style-type: none"> RC chips were washed, logged and a representative sub-sample of the 1 m drill sample retained in reference chip trays for the entire length of a hole. Reference chip trays were photographed wet and dry. <p>Diamond Drilling</p> <ul style="list-style-type: none"> Diamond core was geotechnically logged at 1 cm scale; recording recovery, RQD, orientation confidence, joint density, joint sets, joint asperity and fill mineralogy. Core trays were photographed wet and dry.

Criteria	JORC Code explanation	Commentary
<p>Sub-sampling techniques and sample preparation</p>	<ul style="list-style-type: none"> • <i>If core, whether cut or sawn and whether quarter, half or all core taken.</i> • <i>If non-core, whether riffled, tube sampled, rotary split, etc and whether sampled wet or dry.</i> • <i>For all sample types, the nature, quality and appropriateness of the sample preparation technique.</i> • <i>Quality control procedures adopted for all sub-sampling stages to maximise representivity of samples.</i> • <i>Measures taken to ensure that the sampling is representative of the in situ material collected, including for instance results for field duplicate/second-half sampling.</i> • <i>Whether sample sizes are appropriate to the grain size of the material being sampled.</i> 	<p>Historic Drilling</p> <ul style="list-style-type: none"> • Diamond core was machine sawn and half core taken for analytical analysis purposes. • All non-core when resampled at 1m was riffle split at the time of drilling. Split samples comprised approximately 8-10% of the original sample material. • Collection of RC chips by riffle split techniques and the collection of half core ensured the nature, quality and appropriateness of the sample preparation method. • The methodology of collecting RC and drill core samples was consistent throughout the entirety of the drilling programmes and undertaken by qualified geoscientists. Each sub-sample is representative of the interval. • Field duplicates were routinely collected at a rate of approximately 1 in every 20 samples and submitted with the sample batch. Additional samples were sent to umpire laboratories for assaying. All QA/QC and umpire laboratory samples returned satisfactory results. • Sample sizes collected were appropriate to reasonably represent the material being tested. <p>STK Drilling</p> <ul style="list-style-type: none"> • RC samples were split from dry, 1 m bulk sample via a cone splitter directly from the cyclone. • Diamond core samples were collected at geologically defined intervals, with a minimum sample length of 0.3 m and maximum of 1.2 m. Samples were cut using an automated variable-speed diamond saw, with half-core submitted for analysis. • The quality control procedures adopted throughout the process include: <ul style="list-style-type: none"> ○ Weighing of calico and reject green samples to determine sample recovery compared to theoretical sample recovery, and check sample bias through the splitter. ○ Field duplicates collected from the B-chute of the splitter at a 1:40 ratio through the entire hole at the same time as the original sample collection from the A-chute.

Criteria	JORC Code explanation	Commentary
		<ul style="list-style-type: none"> ○ OREAS certified reference material (CRM) was inserted at a ratio of 1:20 throughout sampling. The grade ranges of the CRMs were selected based on grade populations and economic grade ranges. The reference material type was selected based on the geology, weathering, and analysis method of the sample. ○ Field Duplicates and CRMs were submitted to the lab using unique Sample IDs for both core and chip samples ○ A 2-3 kg sample was submitted for RC and diamond core to Intertek Laboratory, Maddington WA. ○ All samples were sorted and dried at 105 C, crushed to ~3 mm and linearly split, ensuring jars are filled to 85 % full. Samples were then analysed by Photon-Assay (PAAU002) method with detection limits of 0.02-350 ppm. ○ Intertek separately analyse 1 CRM in every 50 samples as well as 1 duplicate assay in every 50 samples as part of standard QAQC protocol for Photon analysis.
<p>Quality of assay data and laboratory tests</p>	<ul style="list-style-type: none"> ● <i>The nature, quality and appropriateness of the assaying and laboratory procedures used and whether the technique is considered partial or total.</i> ● <i>For geophysical tools, spectrometers, handheld XRF instruments, etc, the parameters used in determining the analysis including instrument make and model, reading times, calibrations factors applied and their derivation, etc.</i> ● <i>Nature of quality control procedures adopted (eg standards, blanks, duplicates, external laboratory checks) and whether acceptable levels of accuracy (ie lack of bias) and precision have been established.</i> 	<p>Historic Drilling</p> <ul style="list-style-type: none"> ● The sample preparation follows industry best practice and was undertaken at the accredited laboratories of either ALS (Kalgoorlie or Perth) and/or Genalysis (Perth). Both laboratories have full certification. Sample preparation was appropriate and involved drying, crushing and grinding of the whole sample followed by splitting and then pulverisation to a grind size of 85% passing 75 micron. Samples were considered a partial digestion when using an aqua regia digest and total when using fire assay. A program of checking aqua regia (partial) vs. fire assay (total) vs. gold cyanide leach (Partial) to compare digest methods confirmed no bias between the assay techniques. ● Standard chemical analyses were used for grade determination. There was no reliance on determination of analysis by geophysical tools. ● Field QAQC procedures included the insertion of field duplicates at regular intervals within every sample batch. External laboratory checks were performed on samples from all phases of drilling. Check sampling using partial and full digest methods were employed. Results were satisfactory and demonstrate acceptable levels of accuracy and precision.

Criteria	JORC Code explanation	Commentary
		<p><u>STK Drilling</u></p> <ul style="list-style-type: none"> • QA samples were inserted at a combined ratio of 1:20 throughout. Field duplicates were collected at a 1:40 ratio from the B-chute of the cone splitter at the same time as the original sample was collected from the A-chute. OREAS certified reference material (CRM) was inserted at a ratio of 1:40. The grade ranges of the CRMs were selected based on grade populations and economic grade ranges. The reference material type was selected based on the geology, weathering, and analysis method of the sample. • All samples were sorted and dried at 105 C, crushed to ~3 mm and linearly split, ensuring jars are filled to 85 % full. Samples were then analysed by Photon-Assay (PAAU002) method with detection limits of 0.02-350 ppm. • Intertek separately analyse 1 CRM in every 50 samples as well as 1 duplicate assay in every 50 samples as part of standard QAQC protocol for Photon analysis.
<p>Verification of sampling and assaying</p>	<ul style="list-style-type: none"> • <i>The verification of significant intersections by either independent or alternative company personnel.</i> • <i>The use of twinned holes.</i> • <i>Documentation of primary data, data entry procedures, data verification, data storage (physical and electronic) protocols.</i> • <i>Discuss any adjustment to assay data.</i> 	<p><u>Historic Drilling</u></p> <ul style="list-style-type: none"> • Several Geoscientists both internal and external to MGM have verified the intersections. • There were no twin holes although a number of scissor holes were drilled and on occasion, at better than 20 x 20m drill density. • Field data was uploaded at point of collection using Toughbook or similar hardware and verified at point of entry. Data is stored at various locations in Perth where it is backed-up. <p><u>STK Drilling</u></p> <ul style="list-style-type: none"> • Logging and sampling were recorded directly into LogChief, utilizing lookup tables and in-file validations, on a Toughbook by a geologist at the rig. • Logs and sampling were imported daily into Micromine for further validation and geological confirmation. • When received, assay results were plotted on section and verified against neighboring drill holes. • From time to time, assays will be repeated if they fail company QAQC protocols. • Historic holes have been twinned by STK to validate assay data.

Criteria	JORC Code explanation	Commentary
<p><i>Location of data points</i></p>	<ul style="list-style-type: none"> • <i>Accuracy and quality of surveys used to locate drill holes (collar and down-hole surveys), trenches, mine workings and other locations used in Mineral Resource estimation.</i> • <i>Specification of the grid system used.</i> • <i>Quality and adequacy of topographic control.</i> 	<ul style="list-style-type: none"> • Further infill drilling has been completed by STK to validate historic resource models. <p><u>Historic Drilling</u></p> <ul style="list-style-type: none"> • Drill hole collars were surveyed by registered surveyors using theodolite and EDM equipment. Drill holes were down hole surveyed using an Eastman camera arrangement. For confirmation, some holes were surveyed using a Gyro arrangement provided by Surtron. There was no difference between the methodologies. There are no magnetic lithologies in the gold mineralisation zone which would affect an Eastman camera. • The grid system used was AMG 84 Zone 51. This data has since been transformed into the MGA 94 Zone 51 grid system and validated in the field (full collar details are listed in Appendix A). • The topographic surface of the deposit was generated from the coordinates of the drill hole collars. <p><u>STK Drilling</u></p> <ul style="list-style-type: none"> • The grid system used was MGA94 Zone 51 and drillhole collar positions surveyed using a Garmin GPSMAP 64.
<p><i>Data spacing and distribution</i></p>	<ul style="list-style-type: none"> • <i>Data spacing for reporting of Exploration Results.</i> • <i>Whether the data spacing and distribution is sufficient to establish the degree of geological and grade continuity appropriate for the Mineral Resource and Ore Reserve estimation procedure(s) and classifications applied.</i> • <i>Whether sample compositing has been applied.</i> 	<p><u>Historic Drilling</u></p> <ul style="list-style-type: none"> • Drill hole density across the deposit (including all drilling) is approximately 40x40m closing in to better than 20 x 20m in places. • The data spacing and distribution is sufficient to demonstrate spatial and grade continuity of the mineralised horizon to support the classification of the Mineral Resources reported. • RC samples were first submitted as 4m composites. Samples returning greater than 0.2g/t Au were resampled at 1m using the riffle split sample collected at the time of drilling. The majority of collected and assayed samples within the interpreted mineralised envelopes had a sample length of one metre with an average length of 1.08 m. No composited sample was used in the resource estimate. <p><u>STK Drilling</u></p> <ul style="list-style-type: none"> • Drill hole density across the deposit (including all drilling) is approximately 40x40m closing in to better than 20 x 20m in places.

Criteria	JORC Code explanation	Commentary
		<ul style="list-style-type: none"> The data spacing and distribution is sufficient to demonstrate spatial and grade continuity of the mineralised horizon to support the classification of the Mineral Resources reported. 1 m cone-split sampling has been used throughout ore zones and exploration drilling, with 4 m compositing used in waste zones. Where composite assays are returned with greater than 0.1 g/t Au, the original 1 m A-chute split was sent for assay.
<i>Orientation of data in relation to geological structure</i>	<ul style="list-style-type: none"> <i>Whether the orientation of sampling achieves unbiased sampling of possible structures and the extent to which this is known, considering the deposit type.</i> <i>If the relationship between the drilling orientation and the orientation of key mineralised structures is considered to have introduced a sampling bias, this should be assessed and reported if material.</i> 	<ul style="list-style-type: none"> The orientation of the drilling /sampling (mostly 60deg to the west) is considered normal to the overall trend (north-south) and dip of the gold mineralisation which lies within a sub-vertical shear zone. Diamond drilling confirmed that drilling orientation did not introduce any bias regarding the orientation of the mineralised horizons.
<i>Sample security</i>	<ul style="list-style-type: none"> <i>The measures taken to ensure sample security.</i> 	<ul style="list-style-type: none"> Chain of Custody of digital data was managed by the Company. Physical material was stored on site and, when necessary, delivered to the assay laboratory. Thereafter laboratory samples were controlled by the nominated laboratory which to date has been ALS and Genalysis. All sample collection was controlled by digital sample control files and hard-copy ticket books.
<i>Audits or reviews</i>	<ul style="list-style-type: none"> <i>The results of any audits or reviews of sampling techniques and data.</i> 	<p>Historic Drilling</p> <ul style="list-style-type: none"> A quality control (QC) analysis was conducted on the assay data in November 1999. The report indicated that the assay data was accurate and precise and could be reliably included in the Millrose resource estimate of 1999.

Section 2 Reporting of Exploration Results

Criteria	JORC Code explanation	Commentary
Mineral tenement and land tenure status	<ul style="list-style-type: none"> Type, reference name/number, location and ownership including agreements or material issues with third parties such as joint ventures, partnerships, overriding royalties, native title interests, historical sites, wilderness or national park and environmental settings. The security of the tenure held at the time of reporting along with any known impediments to obtaining a licence to operate in the area. 	<ul style="list-style-type: none"> The Millrose gold deposit is located within STK's 100% owned Exploration Licence E53/1304, located 10km east of the Jundee gold operations. It is located within the Wiluna Native Title Group (WAD6164/98) claimant area. A Mining Lease application (M53/1110) is currently in place. The existing Exploration Licence is in good standing with the governing authority and there is no known impediment to the future grant of this Mining Licence, subject to meeting all necessary Government requirements. L11 Capital Pty Ltd holds a 1% gross revenue royalty over the above tenure.
Exploration done by other parties	<ul style="list-style-type: none"> Acknowledgment and appraisal of exploration by other parties. 	<ul style="list-style-type: none"> Modern exploration started with Mining and Resources Australia (MRA)'s exploration activities in the reporting period 1996-1997 where it acquired airborne magnetic and radiometric data, and undertook RAB (21 holes for 1,287m) and aircore (85 holes for 8,091m) drilling which resulted in the definition of a significant interface geochemical anomaly at old Camp Bore (now named Millrose). To 1998 MRA completed further air core (429 holes for 37,194m), RC (36 holes for 5,914m) and Diamond (7 tails for 890.95m) drilling and defined a gold anomaly with strike length of 3.7km at > 1g/t Au including significant mineralisation over 480m to a vertical depth of 260m. To 1999 MRA completed regional aircore (188 holes for 11,987m), and RC (116 holes for 17,745m) and Diamond (39 tails for 3,504.43m) drilling at the Millrose gold deposit to better delineate the gold mineralisation. In late 1999 MRA reported a Mineral Resource estimate for the Millrose (North) gold deposit. In 2004 Audax drilled RAB (3 holes for 75m) and air core (99 holes for 8,980m) at Millrose and submitted lateritic gold bearing material for cyanide leach testing. Various economic studies were undertaken which confirmed economic viability of toll treatment option as best development option. In 2005 Audax completed RC (96 holes for 1,007m) peripheral to the Millrose gold deposit. In 2009 Northwind completed an economic study which confirmed economic viability of toll treatment option as best development option. In December 2012 six diamond drill core samples (1/4 core from historic drilling) were collected for metallurgical testing by standard bottle roll cyanidation test work. Gold recoveries were circa 90% with rapid leaching times.
Geology	<ul style="list-style-type: none"> Deposit type, geological setting and style of mineralisation. 	<ul style="list-style-type: none"> The Millrose gold deposit is a typical Archaean aged, shear related gold deposit. The shear (Celia Shear) strikes north-south and is sub-vertical. Gold mineralisation is associated with the shearing and alteration of a

Criteria	JORC Code explanation	Commentary
		volcaniclastic succession. There is an extensive lateritic profile with a pronounced depletion zone. Mineralisation is sub horizontal in the lateritic profile and subvertical when fresh.
Drill hole Information	<ul style="list-style-type: none"> • A summary of all information material to the understanding of the exploration results including a tabulation of the following information for all Material drill holes: <ul style="list-style-type: none"> ○ easting and northing of the drill hole collar ○ elevation or RL (Reduced Level – elevation above sea level in metres) of the drill hole collar ○ dip and azimuth of the hole ○ down hole length and interception depth ○ hole length. • If the exclusion of this information is justified on the basis that the information is not Material and this exclusion does not detract from the understanding of the report, the Competent Person should clearly explain why this is the case. 	<ul style="list-style-type: none"> • Please refer to Appendix A Tables 1 and 2.
Data aggregation methods	<ul style="list-style-type: none"> • In reporting Exploration Results, weighting averaging techniques, maximum and/or minimum grade truncations (eg cutting of high grades) and cut-off grades are usually Material and should be stated. • Where aggregate intercepts incorporate short lengths of high grade results and longer lengths of low grade results, the procedure used for such aggregation should be stated and some typical examples of such aggregations should be shown in detail. • The assumptions used for any reporting of metal equivalent values should be clearly stated. 	<p>Historic Drilling</p> <ul style="list-style-type: none"> • A nominal 0.5g/t Au cut off was used to delineate significant gold intercepts associated with the resource estimation. • No metal equivalents were used. <p>STK Drilling</p> <ul style="list-style-type: none"> • A nominal cutoff of 0.5g/t Au was used to delineate significant gold intercepts from this recent phase of drilling • Several discrete zones of core loss were encountered in the weathered portion of the MRDD005 diamond drill hole. To calculate the grade average for this hole, a value of 0.02g/t Au (Photon Assay detection limit), was assigned to the core loss zone.
Relationship between mineralisation widths and intercept lengths	<ul style="list-style-type: none"> • These relationships are particularly important in the reporting of Exploration Results. • If the geometry of the mineralisation with respect to the drill hole angle is known, its nature should be reported. • If it is not known and only the down hole lengths are reported, there should be a clear statement to this effect (eg 'down hole length, true width not known'). 	<ul style="list-style-type: none"> • All drilling is at a declination of 60deg generally to grid west (270°) although some holes were drilled to grid east (90°). The shear hosted gold mineralisation is sub vertical to steeply east dipping. Down hole intercepts are not true thickness. • Down hole intercept lengths are not true widths and are marked as such.
Diagrams	<ul style="list-style-type: none"> • Appropriate maps and sections (with scales) and tabulations of intercepts should be included for any significant discovery being reported These should 	<ul style="list-style-type: none"> • Refer to main ASX announcement report.

Criteria	JORC Code explanation	Commentary
	<i>include, but not be limited to a plan view of drill hole collar locations and appropriate sectional views.</i>	<ul style="list-style-type: none"> The topographic map (Figure 1) highlighting the oxide drill intercepts, represents the location of oxide drill intercepts drilled by Strickland Metals Ltd.
<i>Balanced reporting</i>	<ul style="list-style-type: none"> Where comprehensive reporting of all Exploration Results is not practicable, representative reporting of both low and high grades and/or widths should be practiced to avoid misleading reporting of Exploration Results. 	<ul style="list-style-type: none"> Exploration results have been previously released into the public domain.
<i>Other substantive exploration data</i>	<ul style="list-style-type: none"> Other exploration data, if meaningful and material, should be reported including (but not limited to): geological observations; geophysical survey results; geochemical survey results; bulk samples – size and method of treatment; metallurgical test results; bulk density, groundwater, geotechnical and rock characteristics; potential deleterious or contaminating substances. 	<ul style="list-style-type: none"> Six diamond drill core samples (1/4 core from historic drilling) were submitted for in Bottle Roll Cyanidation Tests to assess potential gold recovery. The metallurgical test results confirmed positive recovery results (approx. 90%) with rapid leach kinetics. Several samples from diamond holes MRDD002 and MRDD008 (Millrose North) and several samples from MRDD011 (Millrose Central) were analysed with micro XRF to quickly acquire qualitative and quantitative geochemical data in relation to the gold mineralisation at high spatial resolution.
<i>Further work</i>	<ul style="list-style-type: none"> The nature and scale of planned further work (eg tests for lateral extensions or depth extensions or large-scale step-out drilling). Diagrams clearly highlighting the areas of possible extensions, including the main geological interpretations and future drilling areas, provided this information is not commercially sensitive. 	<ul style="list-style-type: none"> Additional micro XRF analysis at a higher resolution, to determine the main controls on gold mineralisation. Processing of the drone magnetic survey data to accurately map the BIF-shear contact and to assist with 3D geological inversion modelling RC and diamond drilling to further increase the known gold resource inventory as outlined in the main body of text. Mark Munro (Structural Geology Consultant at Model Earth Pty Ltd) has been engaged to assist with verifying the overall structural and geological model at Millrose. This work will take place in October-November and will help to validate the work completed to date and assist with further refined drill target testing.