



**AUSMON RESOURCES  
LIMITED**

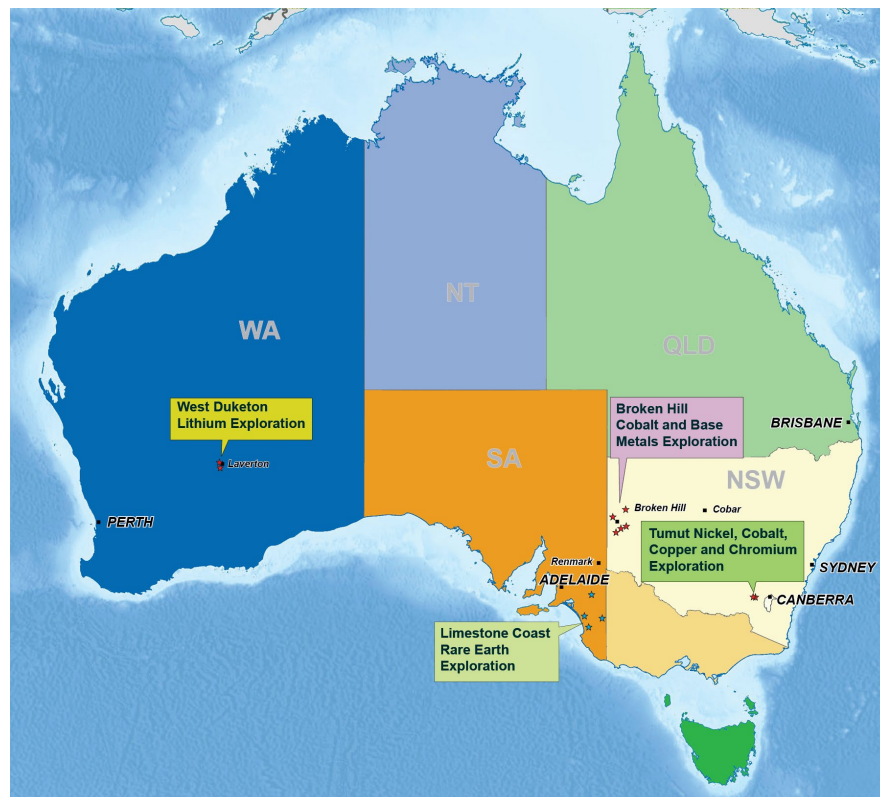
27 May 2022

ASX Market Announcements

**RARE EARTH ELEMENTS EXPLORATION IN MURRAY AND OTWAY BASINS, SA  
RECEIVED PROPOSAL FOR GRANT OF THREE EXPLORATION LICENCES**

Ausmon Resources Limited (“Company”) is pleased to announce that it has received notifications from the Department of Energy and Mining of South Australia of proposals for grant of exploration licences that the Company has applied for under ELA 2021/0082 Parrakie, ELA 2021/00136 Mt Rough and ELA 2021/00137 Kingston, each for 6 years after payment of the Annual Regulation Fee for the First Year of Licence Term and the Annual Administration Fee.

The licence areas cover a total of approximately 2,563 square kilometers located on the Limestone Coast in southeast of South Australia (**Figures 1 and 2**) within the Loxton Sands or equivalent of the Murray and Otway Basins.



**Figure1: Ausmon Projects Location in Australia**

**AUSMON RESOURCES LIMITED** ABN 88 134 358 964

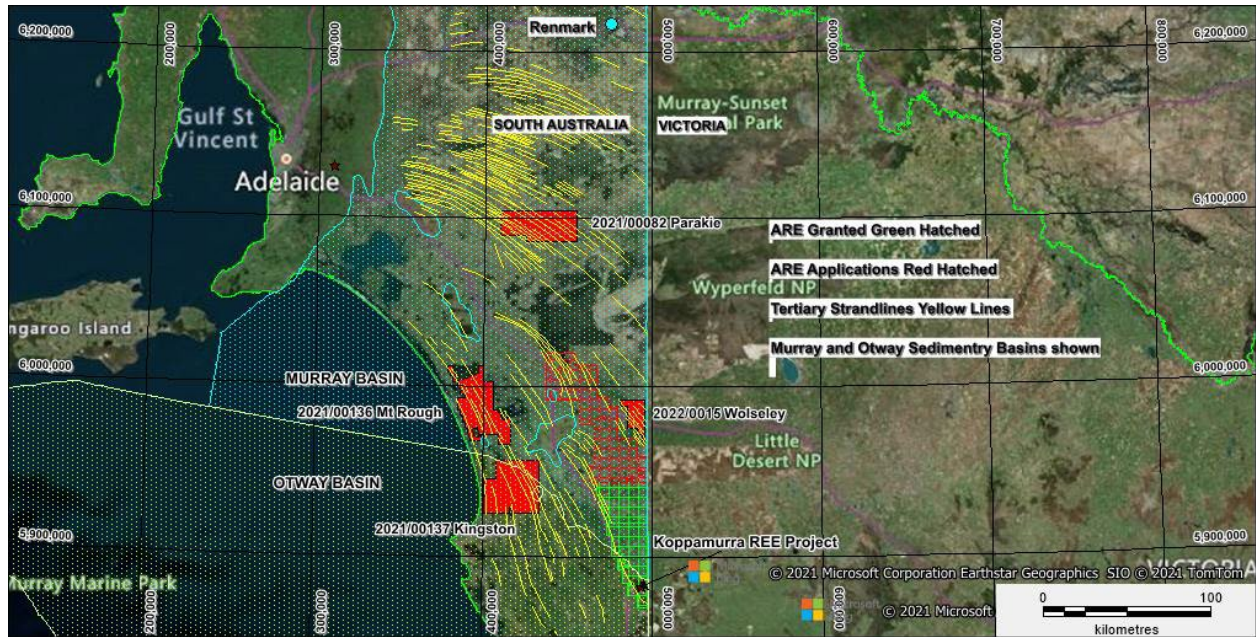
“World Tower” Suite 1312, 87-89 Liverpool Street, Sydney NSW 2000 Australia.

PO BOX 20188 World Square, NSW 2002 Australia

Tel: **61 2 9264 6988** Fax: **61 2 9283 7166** Email: **office@ausmonresources.com.au**

[www.ausmonresources.com.au](http://www.ausmonresources.com.au) ASX code: **AOA**





**Figure 2: REE Exploration Application Areas within Murray and Otway Basins in SA**

The aim of the Company is to explore for Rare Earth Elements (“REE”) contained within the fine clay fraction of Tertiary (65 to 2.5 Million Years Ago) Strandlines (“ionic clay style of deposit) reportedly existing in the region. Australian Rare Earth (ASX:AR3) has a large area in the region and recently announced a JORC inferred mineral resource of 39.9 MT @ 725 ppm TREO (Total Rare Earth Oxides) at their Koppamurra project prospective for ionic clay REE deposit (see AR3’s ASX announcement of 13 July 2021 and AR3’s prospectus dated 7 May 2021 released on ASX announcement platform on 29 June 2021).

REE have been designated critical minerals by Australia, EU, USGS and IEA and are used in rare earth permanent magnets for electric vehicles (EV), wind turbines and various electronic devices.

The Company has developed an exploration strategy for selected sites to be visited to collect, if there is available material, a bulk sample to identify any clay fraction that can be sieved. In addition, during the roadside traverses, sites would be selected for later verge Aircore drill traverses. In addition to the near surface evaluation of the REE ionic clay potential, a further evaluation of the deeper bedrock potential for gold and base metal mineralisation sites will be carried out based on a lithostructural interpretation of available geophysical data sets.

### Planned Exploration Work

- Thorough review of all historic exploration across the 3 tenements.
- Meetings with local councils to obtain permission for roadside auger drilling.
- Review of proposed auger site via “Dial Before You Dig” website.
- Field visit to proposed orientation sites with auger drilling traverses at the sites.
- Deeper (up to 50m) Aircore drilling of high priority targets from the orientation auger traverses.

**Competent Person Statement**

*The information in the report above that relates to Exploration Results, Exploration Targets and Mineral Resources is based on information compiled by Mr Mark Derriman, who is the Company's Consultant Geologist and a member of The Australian Institute of Geoscientists (1566). Mr Mark Derriman has sufficient experience that is relevant to the style of mineralization and type of deposit under consideration and to the activities which he is undertaking to qualify as a Competent Person as defined in the 2012 Edition of the Australasian Code for Reporting of Exploration Results, Exploration Targets, Mineral Resources and Ore Reserves. Mr Mark Derriman consents to the inclusion in this report of matters based on his information in the form and context in which it appears.*

**Forward-Looking Statement**

*This document may include forward-looking statements. Forward-looking statements include, but are not limited to, statements concerning planned exploration program and other statements that are not historical facts. When used in this document, the words such as "could", "plan", "estimate", "expect", "intend", "may", "potential", "should" and similar expressions are forward-looking statements. Although Ausmon Resources Limited believes that its expectations reflected in these forward-looking statements are reasonable, such statements involve risks and uncertainties and no assurance can be given that actual results will be consistent with these forward-looking statements.*

**Authorised by:**

John Wang  
Managing Director

Eric Sam Yue  
Director/Company Secretary

**Contact:**

T: 02 9264 6988 E: [office@ausmonresources.com.au](mailto:office@ausmonresources.com.au)