



## ASX Release

26<sup>th</sup> May 2022

### Completion of Deep Diamond Drilling at Granite Flat

**Dart Mining NL (ASX:DTM)** (“Dart Mining” or “the Company”) is pleased to announce that deep diamond drilling of Induced Polarisation (“IP”) geophysical targets at Dart’s Granite Flat Copper-Gold porphyry project in Northeast Victoria has been completed, with notable zones of alteration as well as copper and molybdenite mineralisation encountered.

#### Highlights

- **Three diamond drill holes completed for a total of 996.8m of drilling**
  - EMDDH006 terminated at 429.0m
  - EMDDH007 terminated at 268.3m
  - EMDDH008 terminated at 299.5m
- **EMDDH006 tested a large IP chargeability anomaly and encountered zones of strong alteration with visible copper and molybdenum mineralisation in association with granodiorite and quartz-feldspar porphyry**
- **EMDDH007 tested a second chargeability anomaly, intersecting varied lithologies including basalt dykes associated with copper mineralisation**
- **EMDDH008 successfully targeted a sheeted vein system with a co-incident zone of elevated resistivity, and encountered multiple shear zones with high structural complexity**
- **Dart Mining is currently awaiting assay results from this latest drilling program**

#### Chairman, James Chirnside commented:

*“Dart has successfully completed a planned three-hole, deep diamond drilling program to test geophysical targets, identified last year, across the Granite Flat Copper-Gold project. Encouragingly, all holes encountered zones of copper and molybdenum mineralization. Further drill testing is planned to start at the beginning of June.”*

Visit our webpage:  
[www.dartmining.com.au](http://www.dartmining.com.au)

Find us on LinkedIn:  
Dart Mining NL

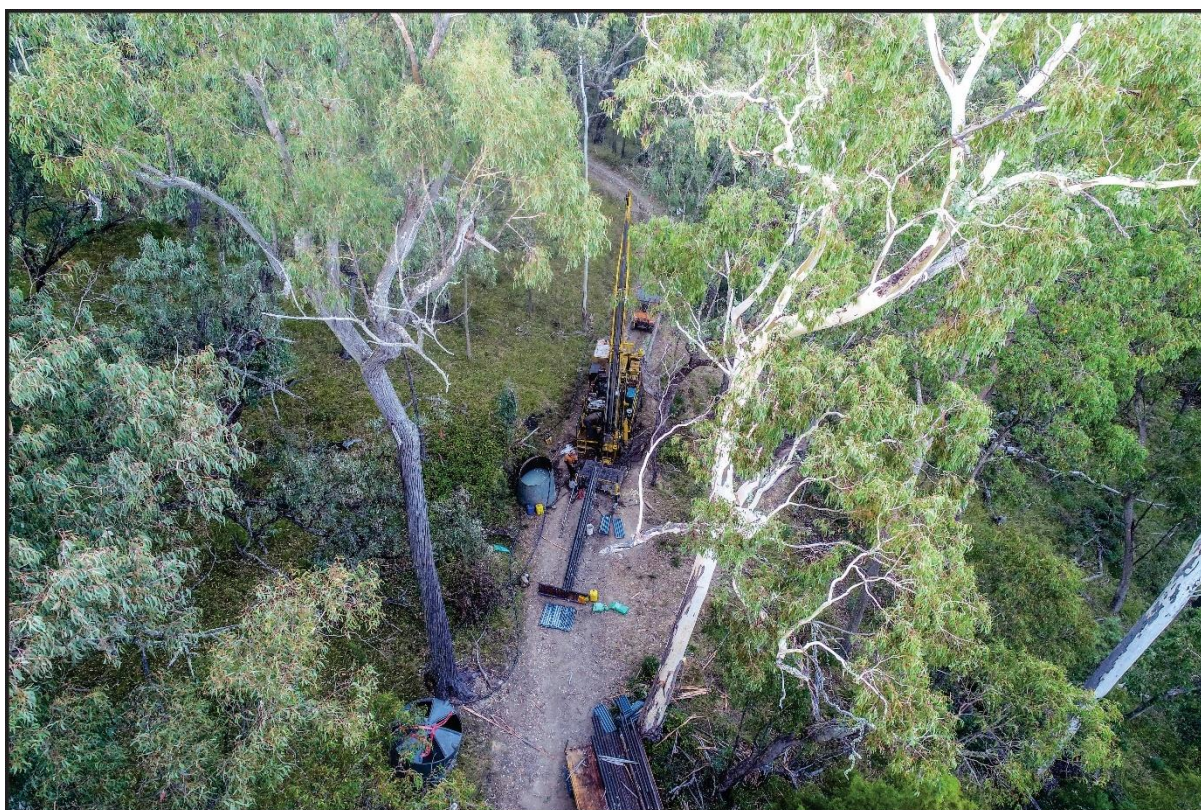
For more information, contact:  
James Chirnside, Managing Director  
Email: [jchirnside@dartmining.com.au](mailto:jchirnside@dartmining.com.au)  
Phone: +61 447 447 613

Dart Mining NL  
ABN: 84 119 904 880  
412 Collins Street  
Melbourne  
VIC 3000

## DIAMOND DRILLING OF GEOPHYSICAL TARGETS

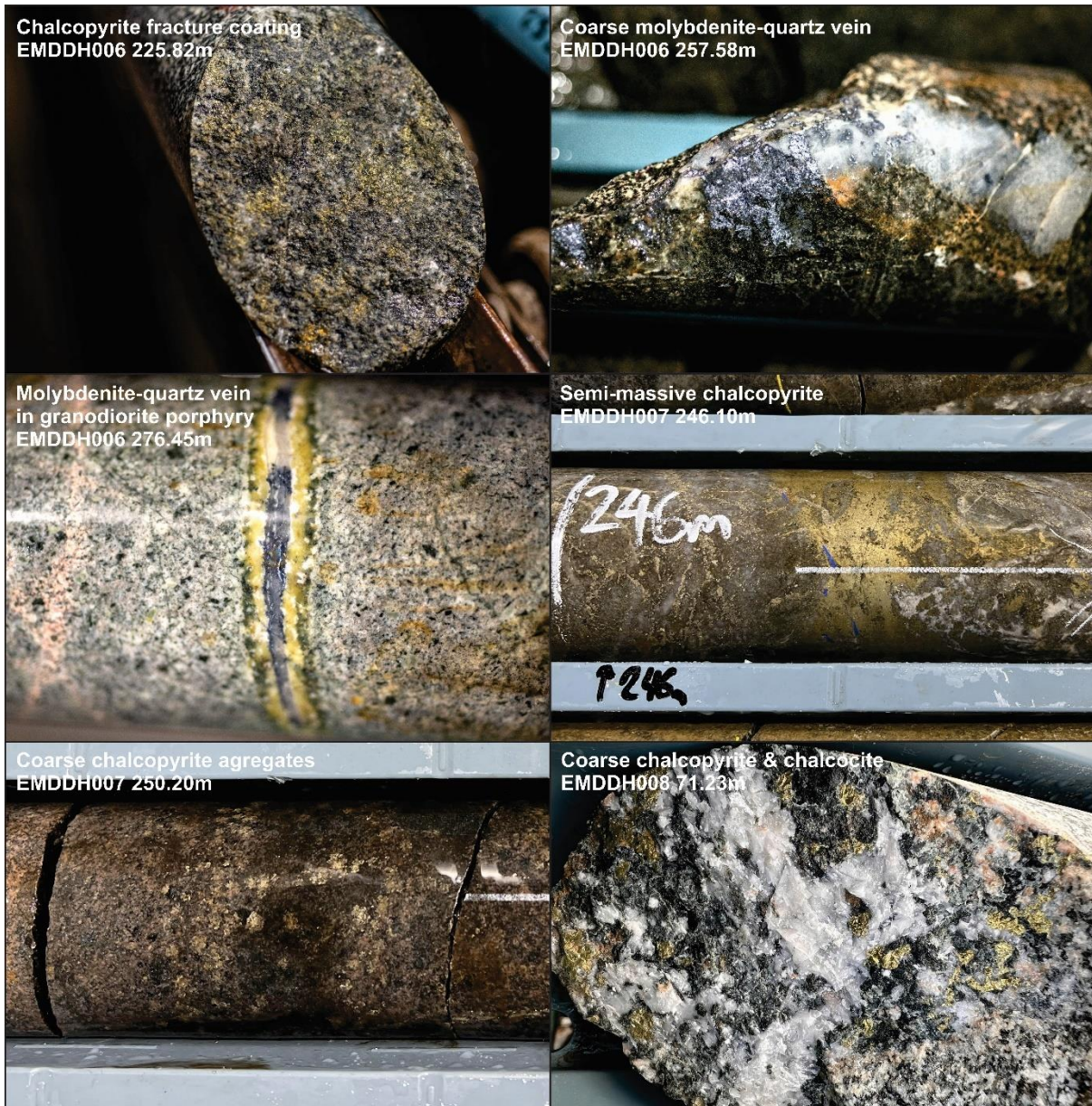
A three-hole, deep diamond drilling program for a total of 996.8m of drilling has tested geophysical targets across the Granite Flat project, with all holes encountering zones of visible copper and molybdenum mineralization (Figure 2). Hole EMDDH006 was designed to target a substantial induced polarization (IP) geophysical anomaly identified in the IP survey completed in late 2021 ([Dart ASX 29<sup>th</sup> September 2021](#)). At 429m depth, EMDDH006 represented the deepest hole yet drilled in the Granite Flat project, with several intervals of potassic altered quartz-feldspar porphyry identified (Figure 2). Similarly, EMDDH007 was located to target a second significant IP anomaly, 1.3 km away on the southern side of the Granite Flat project. Hole EMDDH007 was drilled to a depth of 260m, and encountered basaltic dykes carrying disseminated pyrite and chalcopyrite, with narrow semi-massive sulphide mineralization near the margins (Figure 2). Both EMDDH006 and EMDDH007 intercepted broad notable zones of chalcopyrite mineralization, adding further evidence to the scale of the mineralisation at Granite Flat. The third deep diamond hole, EMDDH008, was situated above a zone of elevated resistivity, and successfully targeted a sheeted vein system associated with the intrusion-related mineralization style evident across the project.

The vast majority of core from this latest drilling has been logged and sampled, with Dart Mining geologists eagerly awaiting assay results. Assay laboratories are currently experiencing exceptionally high demand, and we are currently expecting a two-month turnaround time on assay results for diamond drill core.



**Figure 1** – Territory Drilling set up on hole EMDDH008 at Granite Flat.





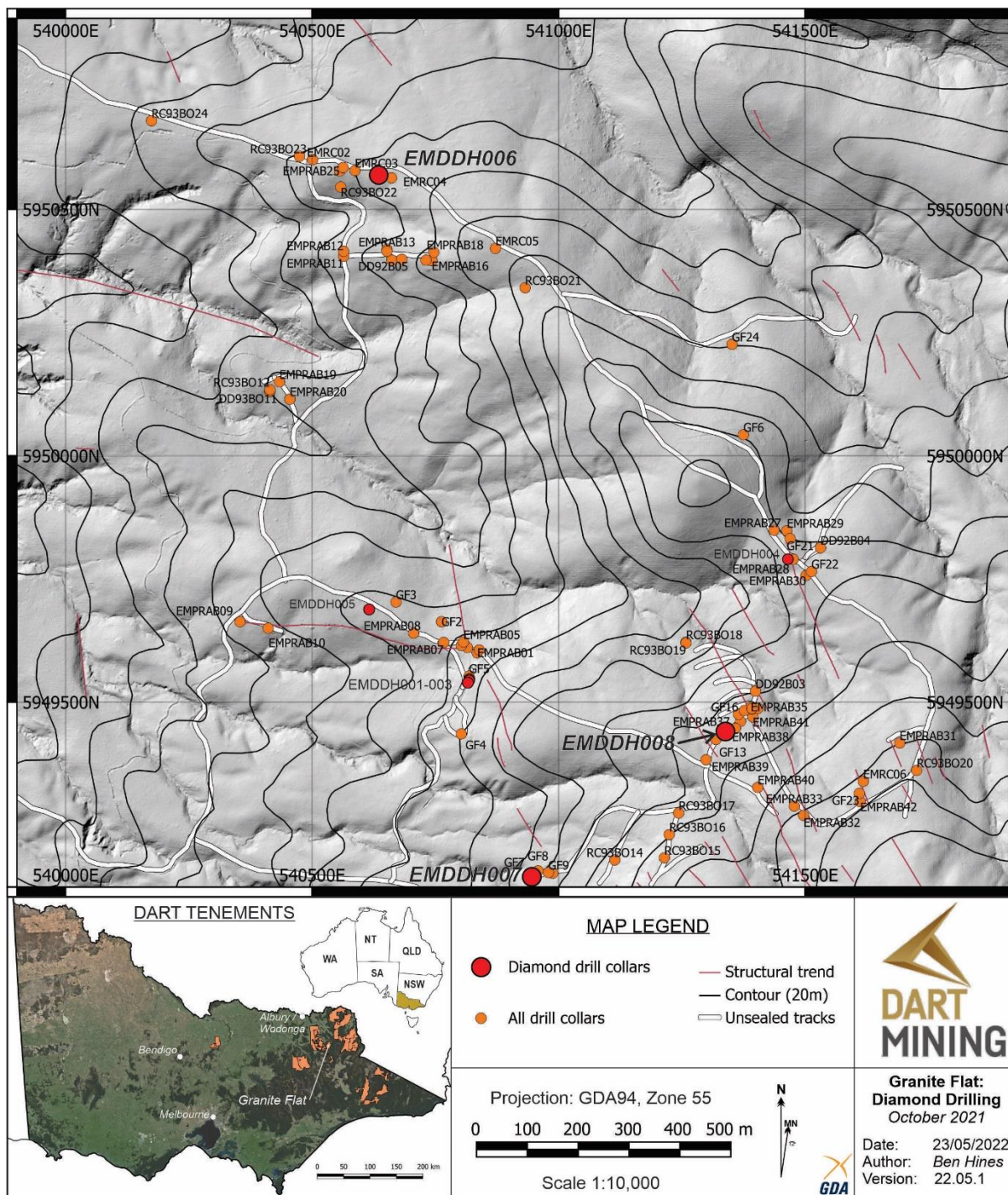
**Figure 2** – Examples of mineralisation styles encountered in the recent drill holes completed at Granite Flat.





**Figure 3** – Dart Mining geologists examining core from the recent diamond drilling at Granite Flat.





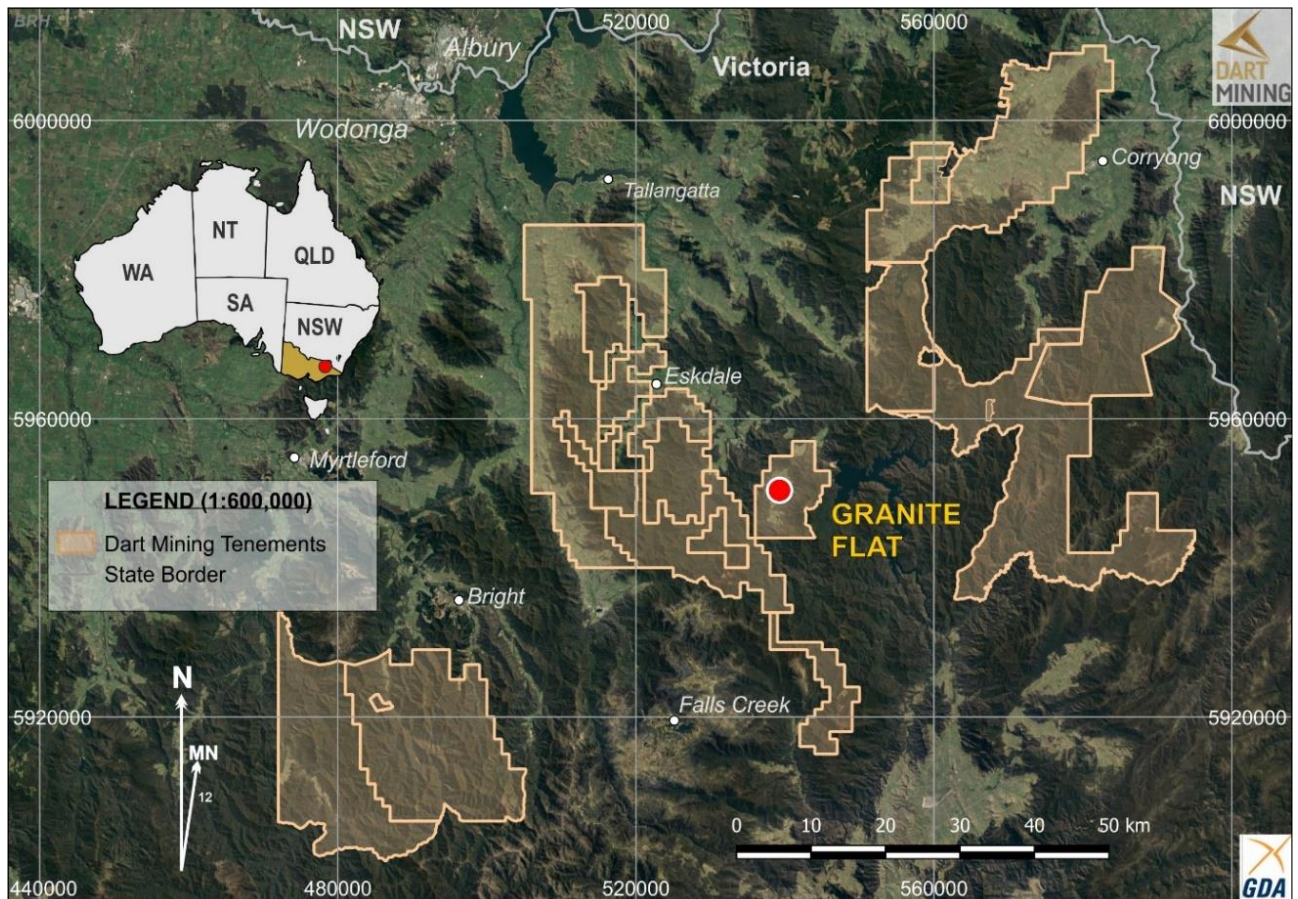
**Figure 4 – Location of completed diamond drill holes relative to previous drill collars.**

## Project Summary

The Granite Flat prospect is located nine kilometres southeast of Mitta Mitta township and is accessed via the Omeo Highway. Historically, the prospect was mined at several small production centres between 1856 and 1918, following an initial discovery identified by tracing the source of alluvial gold in the Mitta River upstream. Previous explorers have targeted the area with geophysical surveys, rock chip, soil and stream sediment sampling, and drilling and trenching. Historic soil grids have established several large, strong Cu-Au anomalies that have seen variable drilling efforts across the prospect. In total, 18 costeans, 52 reverse circulation (RC) and 19 diamond drillholes have been completed by previous explorers between 1986–1997 (Meltech Ltd., CRA Exploration [now Rio Tinto], and Perseverance Mining Ltd.). The broad intersections of low grade Cu-Au mineralisation returned in historic drilling and Dart's recent 42 hole RAB drilling program are hosted within potassic, chlorite and epidote-altered granodiorite, further confirming the potential for porphyry-style mineralisation ([Dart ASX 8<sup>th</sup> March 2021](#)).

Mineralised zones at Granite Flat are hosted within the Banimboola Quartz Monzodiorite (BQM). The BQM has been broadly identified as hosting a porphyry style of Cu-Au mineralisation associated with I-type granitoid and sulphide veins, with alteration varying from silicic to argillic to propylitic, with moderate to high background copper (Hesp, 1974; Bolger *et al.*, 1983; [Ramsay & Vandenberg, 1986](#); [Wilde, 1988](#)). Monzonite intrusive bodies are often the host of porphyry systems in the Lachlan Fold Belt. Additionally, the Granite Flat prospect lies adjacent to the Gilmore Suture, a significant crustal-scale structure that is associated with the emplacement of several porphyry Cu-Au systems across the border in New South Wales. Whilst still in the early stages of exploration, Dart Mining geologists believe that many of the geological characteristics and mineralised features of the Granite Flat prospect correspond with key elements of the porphyry exploration model.





**Figure 6** – Location of the Granite Flat Cu-Au porphyry project, Northeast Victoria.

**For more information contact:**

**James Chirside**  
*Managing Director*  
 Dart Mining NL  
[jchirside@dartmining.com.au](mailto:jchirside@dartmining.com.au)  
 +61 447 447 613

**Peter Taylor**  
*Investor Relations*  
 NWR Communications  
[peter@nwrcommunications.com.au](mailto:peter@nwrcommunications.com.au)  
 +61 412 036 231

**About Dart Mining**

Dart Mining's (ASX: DTM) objective is in exploring, evaluating, and developing, several historic goldfields, as well as validating a new porphyry province in North East Victoria. The area is prospective for precious, base, battery, and other strategic metals. These include Lithium, Gold, Silver, Copper, Molybdenum, Zinc, Tungsten, Tin, Tantalum, and other important minerals. Dart Mining has built a strategically important gold exploration footprint in the Central and North East regions of Victoria, where historic surface and alluvial gold mining proves the existence of a significant regional gold endowment.

— END —

### **Additional JORC Information**

Further details relating to the information on the Granite Flat Copper-Gold Project can be found in Dart Mining's ASX announcements:

- 15<sup>th</sup> February 2022:** ["Granite Flat Cu-Au Diamond Drilling Update"](#)
- 11<sup>th</sup> October 2021:** ["Granite Flat Diamond Drilling Update"](#)
- 29<sup>th</sup> September 2021:** ["Multiple Drill Targets Identified at Granite Flat"](#)
- 14<sup>th</sup> September 2021:** ["Encouraging Copper-Gold Drill Results from Granite Flat"](#)
- 31<sup>st</sup> August 2021:** ["Granite Flat Geophysics Program Complete"](#)
- 1<sup>st</sup> June 2021:** ["Commencement of Second Drilling Program at Granite Flat"](#)
- 27<sup>th</sup> May 2021:** ["Initiation of Geophysical Surveys at Granite Flat"](#)
- 11<sup>th</sup> May 2021:** ["Diamond Drilling Program for Copper-Gold Mineralisation Commences"](#)
- 18<sup>th</sup> March 2021:** ["LiDAR Acquisition over Strategic Projects"](#)
- 8<sup>th</sup> March 2021:** ["Granite Flat High-Grade Gold, Silver, Copper Drill Results"](#)
- 7<sup>th</sup> December 2020:** ["Northeast Drilling Program Complete"](#)
- 9<sup>th</sup> November 2020:** ["Commencement of Drilling Copper-Gold Mineralisation at Granite Flat"](#)
- 27<sup>th</sup> October 2020:** ["Orogenic Gold and Porphyry Prospectivity, Mitta Mitta, NE Victoria"](#)

Additional information on Dart Mining's other recent and current exploration activities can be found in:

- 30<sup>th</sup> November 2021:** ["AGM Presentation"](#)
- 27<sup>th</sup> October 2021:** ["LiDAR Points Towards Increase in Lithium Pegmatites"](#)
- 6<sup>th</sup> October 2021:** ["Lithium Drilling Update"](#)
- 22<sup>nd</sup> September 2021:** ["Mt Elmo Goldfield Mineralisation"](#)
- 20<sup>th</sup> July 2021:** ["Strategic and Technology Metals"](#)
- 6<sup>th</sup> April 2021:** ["Strong Gold Mineralisation Intercepted at Rushworth"](#)
- 16<sup>th</sup> February 2021:** ["Sandy Creek Significant Gold Mineralisation"](#)
- 7<sup>th</sup> December 2020:** ["Northeast Drilling Program Complete"](#)
- 16<sup>th</sup> November 2020:** ["Drilling Commencement, Historic Rushworth Goldfield"](#)
- 5<sup>th</sup> November 2020:** ["Rushworth Historic High-Grade Goldfield"](#)
- 30<sup>th</sup> October 2020:** ["Report for the quarter ended 30<sup>th</sup> September 2020"](#)
- 19<sup>th</sup> October 2020:** ["Drill Results Reveal High-Grade Gold"](#)
- 1<sup>st</sup> September 2020:** ["Drilling of Gold Mineralisation Commencing"](#)



### Competent Person's Statement

The information in this report has been prepared, compiled, and verified by Dr. Ben Hines PhD, MSc, a Competent Person who is a Member of the Australian Institute of Geoscientists. Dr. Hines is the Exploration Manager for Dart Mining. Dr. Hines has sufficient experience that is relevant to the style of mineralisation and type of deposits under consideration and to the activity being undertaken to qualify as a competent person as defined in the 2012 Edition of the "Australasian Code for Reporting of Exploration Results, Mineral Resources and Ore Reserves". Dr. Hines consents to the inclusion in the report of the matters based on his information in the form and context in which it appears

### Forward-Looking Statement

Certain statements contained in this document constitute forward-looking statements. Forward-looking statements include, but are not limited to, Dart Mining's current expectations, estimates and projections about the industry in which Dart operates, and beliefs and assumptions regarding Dart's future performance. Such forward-looking statements are based on a number of estimates and assumptions made by the Company and its consultants in light of experience, current conditions and expectations of future developments which the Company believes are appropriate in the current circumstances. When used in this document, words such as; "anticipate", "could", "intends", "estimate", "potential", "plan", "seeks", "may", "should", and similar expressions are forward-looking statements. Although Dart believes that its expectations presented in these forward-looking statements are reasonable, such statements are subject to known and unknown risks, uncertainties and other factors, which may cause the actual results, achievements and performance of the Company to be materially different from the future results and achievements expressed or implied by such forward-looking statements. Investors are cautioned that forward-looking information is no guarantee of future performance and accordingly, investors are cautioned not to place undue reliance on these forward-looking statements.

### References

- Bolger, P. F., Thorne, H. R., Wood, P. D., Cook, C. E., & Rogerson, R. J. (1983). Palaeozoic geology of the Dartmouth Dam area, North-eastern Victoria. *Proceedings of the Royal Society of Victoria*, 95, 259-271.
- Cuffley, B. W. (1987). *EL1546 Granite Flat, NE Victoria: Report for the period 27/03/1987 to 26/09/1987 on Gold Exploration*. Alluvial Prospectors Ltd. EL1546\_G24515\_198709\_Half. 29p.
- Cuffley, B. W. (1988). *EL1546 Granite Flat, NE Victoria: Report for the period 27/03/1988 to 26/09/1988 on Gold Exploration*. Alluvial Prospectors Ltd. EL1546\_G2447\_198809\_Half. 13p.
- Hesp, W. R. (1974). Geochemical features of Sn-Ta-Nb mineralisation associated with granitic rocks in south-eastern Australia. *Metallisation Associated with Acid Magmatism*, 1, 170-180.
- Ramsay, W. R. H., & VandenBerg, A. H. M. (1986). [Metallogeny and tectonic development of the Tasman Fold Belt System in Victoria](#). *Ore Geology Reviews*, 1(2-4), 213-257.
- Wilde, A. R. (1988). [A review of Gold Mineralisation in Eastern Australia](#). Bureau of Mineral Resources Geology and Geophysics, Report 1989/30. 132 p.

## APPENDIX 1

### DIAMOND HOLE COLLAR DETAILS

Hole ID	Easting (MGA Z55)	Northing (MGA Z55)	RL (m)	Dip	Azimuth (mag)	Depth to Target (m)	Drilled Depth (m)	Target
EMDDH006	540669	5950573	511	-90	360	350	429	IP1
EMDDH007	540928	5949105	590	-62	12	225	268.3	IP2
EMDDH008	541345	5949433	677	-60	60	200	299.5	IP7



## APPENDIX 2

### TENEMENT STATUS

All tenement applications continue to pass through the approvals process with the tenements remaining in good standing as of the 31<sup>st</sup> of December 2021 (Table 1.1 – Figure 1.1).

**Table 1.1. TENEMENT STATUS**

Tenement Number	Name	Tenement Type	Area (km <sup>2</sup> ) Unless specified	Interest	Location
MIN006619	Mt View <sup>2</sup>	Mining License	224 Ha	100%	NE Victoria
EL5315	Mitta Mitta <sup>4</sup>	Exploration Licence	148	100%	NE Victoria
EL006016	Rushworth <sup>4</sup>	Exploration Licence	32	100%	Central Victoria
EL006277	Empress	Exploration Licence	87	100%	NE Victoria
EL006300	Eskdale <sup>3</sup>	Exploration Licence	96	100%	NE Victoria
EL006486	Mt Creek	Exploration Licence	116	100%	NE Victoria
EL006861	Buckland	Exploration Licence	414	100%	NE Victoria
EL007007	Union	Exploration Licence	3	100%	Central Victoria
EL006764	Cravensville	EL (Application)	170	100%	NE Victoria
EL006865	Dart	EL (Application)	567	100%	NE Victoria
EL006866	Cudgewa	EL (Application)	508	100%	NE Victoria
EL006994	Wangara	EL (Application)	142	100%	Central Victoria
EL007008	Buckland West	EL (Application)	344	100%	NE Victoria
EL007099	Sandy Creek	EL (Application)	437	100%	NE Victoria
EL007170	Berringama	EL (Application)	27	100%	NE Victoria
EL007430	Buchan	EL (Application)	546	100%	Gippsland
EL007435	Goonerah	EL (Application)	587	100%	Gippsland
EL007425	Deddick	EL (Application)	341	100%	Gippsland
EL007428	Boebuck	EL (Application)	355	100%	NE Victoria
EL007426	Walwa	EL (Application)	499	100%	NE Victoria
EL007754	Tallandoon	EL (Application)	88	100%	NE Victoria
RL006615	Fairley's <sup>2</sup>	Retention License	340 Ha	100%	NE Victoria
RL006616	Unicorn <sup>1&amp;2</sup>	Retention License	23,243 Ha	100%	NE Victoria

**All tenements remain in good standing at 31<sup>st</sup> December 2021.**

**NOTE 1:** Unicorn Project area subject to a 2% NSR Royalty Agreement with Osisko Gold Royalties Ltd dated 29 April 2013.

**NOTE 2:** Areas subject to a 1.5% Founders NSR Royalty Agreement.

**NOTE 3:** Areas are subject to a 1.0% NSR Royalty Agreement with Minvest Corporation Pty Ltd (See DTM ASX Release 1 June 2016).

**NOTE 4:** Areas are subject to a 0.75% Net Smelter Royalty on gold production, payable to Bruce William McLennan.

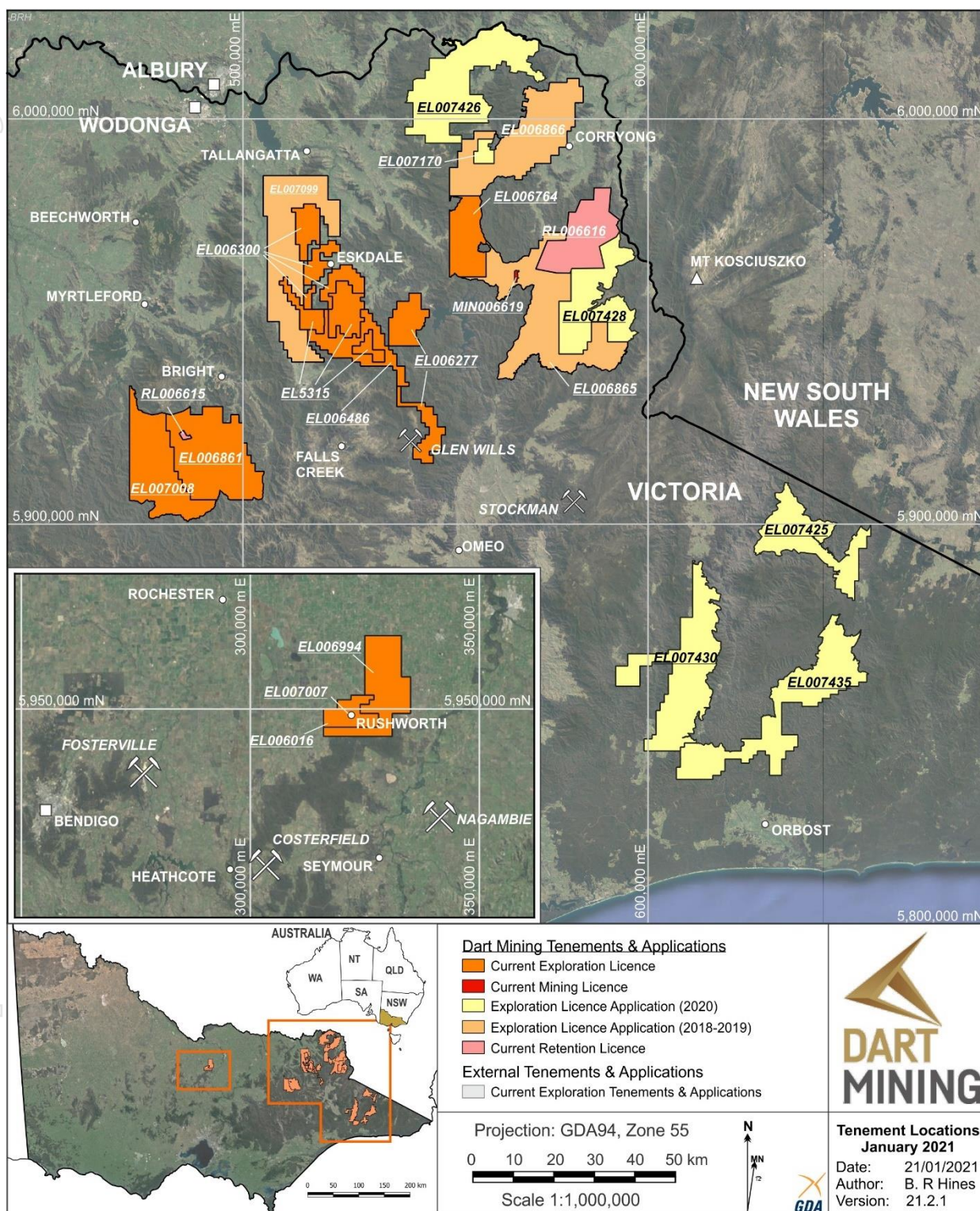


Figure 1.1: Location of Dart Mining's exploration properties in Northeastern Victoria.



## APPENDIX 3

# JORC CODE, 2012 EDITION – TABLE 1

## SECTION 1 SAMPLING TECHNIQUES AND DATA

Criteria	JORC Code Explanation	Commentary
Sampling techniques	<ul style="list-style-type: none"> <li>Nature and quality of sampling (e.g. cut channels, random chips, or specific specialised industry standard measurement tools appropriate to the minerals under investigation, such as down hole gamma sondes, or handheld XRF instruments, etc.). These examples should not be taken as limiting the broad meaning of sampling.</li> <li>Include reference to measures taken to ensure sample representivity and the appropriate calibration of any measurement tools or systems used.</li> <li>Aspects of the determination of mineralisation that are Material to the Public Report.</li> <li>In cases where 'industry standard' work has been done this would be relatively simple (e.g. 'reverse circulation drilling was used to obtain 1 m samples from which 3 kg was pulverised to produce a 30 g charge for fire assay'). In other cases more explanation may be required, such as where there is coarse gold that has inherent sampling problems. Unusual commodities or mineralisation types (e.g. submarine nodules) may warrant disclosure of detailed information.</li> </ul>	<ul style="list-style-type: none"> <li>Diamond core was sampled as half core at 1m intervals or to geological or mineralogical boundaries, where relevant, to a minimum sample size of 0.2m and a maximum of 1.3m. To ensure representative sampling, half core samples were always taken from the same side of the core.</li> <li>Whole holes are sampled at this preliminary stage.</li> <li>In interpreted unmineralized zones, 1m sample composites were submitted.</li> <li>Samples submitted to ALS were whole sample crushed to 70% &lt;2mm, riffle/rotary split off 1 kg, pulverise to &gt;85% passing 75 microns, then assayed by ALS methods AU-AA26 (50g sample aliquot by fire assay), ME-MS61 (0.25g sample aliquot by four-acid digest and ICP-MS and ICP-AES analysis), Cu-OG62 (0.4g sample aliquot by three acid digest, HCL leach and ICP-AES), and Ag-OG62 (0.4g sample aliquot by three acid digest, HCL leach and ICP-AES).</li> <li>Certified Reference Materials OREAS 235, OREAS 237, OREAS 245, OREAS 503d, OREAS 504c and OREAS 506 as well as CRM blank OREAS C27c were inserted every 10 samples as part of a QA/QC system.</li> <li>All-drill related data are referenced to the original ASX report by date published. All details appear in the original report.</li> </ul>
Drilling techniques	<ul style="list-style-type: none"> <li>Drill type (e.g. core, reverse circulation, open-hole hammer, rotary air blast, auger, Bangka, sonic, etc.) and details (e.g. core diameter, triple or standard tube, depth of diamond tails, face-sampling bit or other type, whether core is oriented and if so, by what method, etc.).</li> </ul>	<ul style="list-style-type: none"> <li>Diamond drilling was carried out with HQ2 sized equipment with standard tube.</li> <li>Drill core was oriented with a Reflex orientation tool.</li> <li>All-drill related data are referenced to the original ASX report by date published. All details appear in the original report.</li> </ul>
Drill sample recovery	<ul style="list-style-type: none"> <li>Method of recording and assessing core and chip sample recoveries and results assessed.</li> <li>Measures taken to maximise sample recovery and ensure representative nature of the samples.</li> <li>Whether a relationship exists between sample recovery and grade and whether sample bias may have occurred due to preferential loss/gain of fine/coarse material.</li> </ul>	<ul style="list-style-type: none"> <li>Recoveries from diamond drilling were measured and recorded in a database. Recoveries were typically 100% in fresh rock, with minor core loss in mineralised zones. No relationship has been observed between core recovery and grade.</li> <li>Each 1m sample was weighed and results recorded to monitor sample recovery – a high average recovery was achieved in all holes.</li> <li>Experienced geologists ensured best drilling and sampling practices were maintained.</li> <li>Experienced drillers ensured best drilling and sampling practices were maintained, including pausing drilling between sample intervals to ensure all sample is out of the system and regular cleaning of the sampling equipment.</li> <li>There was no observable relationship between sample recovery and grade.</li> </ul>

<b>Logging</b>	<ul style="list-style-type: none"> <li>• Whether core and chip samples have been geologically and geotechnically logged to a level of detail to support appropriate Mineral Resource estimation, mining studies and metallurgical studies.</li> <li>• Whether logging is qualitative or quantitative in nature. Core (or costean, channel, etc.) photography.</li> <li>• The total length and percentage of the relevant intersections logged.</li> </ul>	<ul style="list-style-type: none"> <li>• All diamond holes were logged for recovery, geology, and structure.</li> <li>• Diamond core was photographed both when wet and dry.</li> <li>• All holes were logged in their entirety.</li> <li>• Sample sizes are considered appropriate to correctly represent the mineralisation style, and the thickness and consistency of intersections being sampled.</li> <li>• 100% of the drilling was logged.</li> </ul>
<b>Sub-sampling techniques and sample preparation</b>	<ul style="list-style-type: none"> <li>• If core, whether cut or sawn and whether quarter, half or all core taken.</li> <li>• If non-core, whether riffled, tube sampled, rotary split, etc. and whether sampled wet or dry.</li> <li>• For all sample types, the nature, quality and appropriateness of the sample preparation technique.</li> <li>• Quality control procedures adopted for all sub-sampling stages to maximise representivity of samples.</li> <li>• Measures taken to ensure that the sampling is representative of the in situ material collected, including for instance results for field duplicate/second-half sampling.</li> <li>• Whether sample sizes are appropriate to the grain size of the material being sampled.</li> </ul>	<ul style="list-style-type: none"> <li>• Diamond core was cut in half using a core saw at either 1m intervals or to prescribed geological contacts.</li> <li>• All samples were collected from the same side of the core to ensure sample representivity.</li> <li>• The sampling procedure is appropriate for the mineralisation style of disseminated copper-gold and is better described in the body of the report.</li> <li>• The samples were sent to ALS Global Laboratories, Pooraka SA.</li> </ul>
<b>Quality of assay data and laboratory tests</b>	<ul style="list-style-type: none"> <li>• The nature, quality and appropriateness of the assaying and laboratory procedures used and whether the technique is considered partial or total.</li> <li>• For geophysical tools, spectrometers, handheld XRF instruments, etc., the parameters used in determining the analysis including instrument make and model, reading times, calibrations factors applied and their derivation, etc.</li> <li>• Nature of quality control procedures adopted (e.g. standards, blanks, duplicates, external laboratory checks) and whether acceptable levels of accuracy (i.e. lack of bias) and precision have been established.</li> </ul>	<ul style="list-style-type: none"> <li>• Samples were submitted to ALS Global (Pooraka) and analysed for gold using ALS methods AU-AA26 (fire assay is considered a total extraction technique for gold) and ME-MS61 (four acid digest is considered a total extraction technique for copper exploration), Cu-OG62 (ore grade copper by three acid digest and HCl leach) and Ag-OG62 (ore grade silver by three acid digest and HCl leach). These techniques are appropriate and considered a total extraction technique for Au &amp; Cu.</li> <li>• Samples were whole sample crushed, pulverised and assayed by ALS method AU-AA26, ME-MS61, Cu-OG62 and Ag-OG62.</li> <li>• Au standards OREAS 235, OREAS 237, and OREAS 245, along with porphyry copper standards OREAS 503d, OREAS 504c and OREAS 506, as well as rhyodacite blanks (OREAS C27e) were included every 20 samples as part of the internal QA/QC system. All results are within expected confidence limits.</li> <li>• A field duplicate sample was collected every 20 samples and analysed within the same sample run.</li> <li>• ALS conducted their own internal laboratory checks.</li> <li>• Laboratory blanks, standards are reviewed per batch to monitor accuracy and precision.</li> </ul>



Verification of sampling and assaying	<ul style="list-style-type: none"> <li>The verification of significant intersections by either independent or alternative company personnel.</li> <li>The use of twinned holes.</li> <li>Documentation of primary data, data entry procedures, data verification, data storage (physical and electronic) protocols.</li> <li>Discuss any adjustment to assay data.</li> </ul>	<ul style="list-style-type: none"> <li>Modelling of IP and MT data completed by Fender Geophysics and Southern Rock Geophysics. Data interpretation and review completed by Mackey Geophysics, prior to review by Dart Mining and consulting geologists.</li> <li>The laboratory supplies all assay data as an export to a CSV file. The raw data is edited to separate all duplicates and CRM results into a QA/QC tab in the CSV file and reviewed.</li> <li>Verification of significant intersections were made by alternative company personnel.</li> <li>No independent review of assay data has been carried out.</li> <li>Data were logged into spreadsheet and checked.</li> <li>Electronic-only assay data is imported into a spreadsheet from the laboratory's electronic data.</li> <li>No holes were twinned at this early exploration stage.</li> <li>Below detection limit data is identified in Appendix 1 using a &lt; character followed by the detection limit.</li> </ul>
Location of data points	<ul style="list-style-type: none"> <li>Accuracy and quality of surveys used to locate drill holes (collar and down-hole surveys), trenches, mine workings and other locations used in Mineral Resource estimation.</li> <li>Specification of the grid system used.</li> <li>Quality and adequacy of topographic control.</li> </ul>	<ul style="list-style-type: none"> <li>The location of drill hole collars and geological mapping confirmed using a Garmin GPSMAP 66i GPS, set to MGA94 Grid Datum (Zone 55) with topographic control taken from the GPS. Accuracy is variable but maintained &lt;3m during the mapping process with constant visual quality assessment conducted.</li> <li>Hand-held GPS was used to survey a control point and drill hole collar positions are then measured by tape and compass relative to the GPS control. The accuracy between holes is &lt;0.5m but absolute accuracy is relative to the original GPS control point at &lt;5m.</li> <li>All maps, plans and data are on an MGA datum and GDA94 zone 55 projection.</li> <li>Elevation is established from the GPS control point.</li> </ul>
Data spacing and distribution	<ul style="list-style-type: none"> <li>Data spacing for reporting of Exploration Results.</li> <li>Whether the data spacing and distribution is sufficient to establish the degree of geological and grade continuity appropriate for the Mineral Resource and Ore Reserve estimation procedure(s) and classifications applied.</li> <li>Whether sample compositing has been applied.</li> </ul>	<ul style="list-style-type: none"> <li>Drill sites were restricted to existing tracks. It was not intended to establish a drill spacing for resource estimation although these holes may be used at a later date.</li> <li>All drill related data are referenced to the original ASX report by date published. All details appear in the original report.</li> </ul>
Orientation of data in relation to geological structure	<ul style="list-style-type: none"> <li>Whether the orientation of sampling achieves unbiased sampling of possible structures and the extent to which this is known, considering the deposit type.</li> <li>If the relationship between the drilling orientation and the orientation of key mineralised structures is considered to have introduced a sampling bias, this should be assessed and reported if material.</li> </ul>	<ul style="list-style-type: none"> <li>Drilling was restricted to existing tracks and pads. However, in all cases it was possible to drill at a high angle to the host structures (refer figures 1 to 4), and achieve a suitable orientation that cross cuts the mineralisation. True width intersections are provided in drill sections, there appears to be no relationship between drill orientation and mineralisation grades.</li> <li>Due to the steep grade of tracks and topography, hole orientation was limited or dictated by landscape physiology in some instances.</li> </ul>
Sample security	<ul style="list-style-type: none"> <li>The measures taken to ensure sample security.</li> </ul>	<ul style="list-style-type: none"> <li>All samples submitted for analysis are placed in sealed poly-weave bags and</li> </ul>

		delivered to a commercial transport company for delivery to the laboratory. Any evidence of sample damage or tampering is immediately reported by the laboratory to the company and a decision made as to the integrity of the sample and the remaining samples within the damaged / tampered bag/s.
<i>Audits or reviews</i>	<ul style="list-style-type: none"> <li><i>The results of any audits or reviews of sampling techniques and data.</i></li> </ul>	<ul style="list-style-type: none"> <li>An internal review of procedures, operations, sampling techniques and analytical techniques was made by Dart Mining.</li> <li>All drilling and assay data is validated upon entry into the EarthSQL Quest database.</li> </ul>

## SECTION 2 REPORTING OF EXPLORATION RESULTS

Criteria	JORC Code Explanation	Commentary
<i>Mineral tenement and land tenure status</i>	<ul style="list-style-type: none"> <li><i>Type, reference name/number, location and ownership including agreements or material issues with third parties such as joint ventures, partnerships, overriding royalties, native title interests, historical sites, wilderness or national park and environmental settings.</i></li> <li><i>The security of the tenure held at the time of reporting along with any known impediments to obtaining a licence to operate in the area.</i></li> </ul>	<ul style="list-style-type: none"> <li>All tenements remain in good standing as of 31<sup>st</sup> December 2021.</li> <li>Details of Dart Mining tenements shown in Appendix 2 and Figure 1.1</li> </ul>



		<table><tr><th>Tenement Number</th><th>Name</th><th>Tenement Type</th><th>Area (km<sup>2</sup>) Unless specified</th><th>Interest</th><th>Location</th></tr><tr><td>MIN006619</td><td>Mt View <sup>2</sup></td><td>Mining License</td><td>224 Ha</td><td>100%</td><td>NE Victoria</td></tr><tr><td>EL5315</td><td>Mitta Mitta<sup>4</sup></td><td>Exploration Licence</td><td>148</td><td>100%</td><td>NE Victoria</td></tr><tr><td>EL006016</td><td>Rushworth<sup>4</sup></td><td>Exploration Licence</td><td>32</td><td>100%</td><td>Central Victoria</td></tr><tr><td>EL006277</td><td>Empress</td><td>Exploration Licence</td><td>87</td><td>100%</td><td>NE Victoria</td></tr><tr><td>EL006300</td><td>Eskdale<sup>3</sup></td><td>Exploration Licence</td><td>96</td><td>100%</td><td>NE Victoria</td></tr><tr><td>EL006486</td><td>Mt Creek</td><td>Exploration Licence</td><td>116</td><td>100%</td><td>NE Victoria</td></tr><tr><td>EL006861</td><td>Buckland</td><td>Exploration Licence</td><td>414</td><td>100%</td><td>NE Victoria</td></tr><tr><td>EL007007</td><td>Union<sup>4</sup></td><td>Exploration Licence</td><td>3</td><td>100%</td><td>Central Victoria</td></tr><tr><td>EL006764</td><td>Cravensville</td><td>Exploration Licence</td><td>170</td><td>100%</td><td>NE Victoria</td></tr><tr><td>EL006865</td><td>Dart</td><td>EL (Application)</td><td>567</td><td>100%</td><td>NE Victoria</td></tr><tr><td>EL006866</td><td>Cudgewa</td><td>EL (Application)</td><td>508</td><td>100%</td><td>NE Victoria</td></tr><tr><td>EL006994</td><td>Wangara</td><td>EL (Application)</td><td>142</td><td>100%</td><td>Central Victoria</td></tr><tr><td>EL007008</td><td>Buckland West</td><td>EL (Application)</td><td>344</td><td>100%</td><td>NE Victoria</td></tr><tr><td>EL007099</td><td>Sandy Creek</td><td>EL (Application)</td><td>437</td><td>100%</td><td>NE Victoria</td></tr><tr><td>EL007170</td><td>Berringama</td><td>EL (Application)</td><td>27</td><td>100%</td><td>NE Victoria</td></tr><tr><td>EL007430</td><td>Buchan</td><td>EL (Application)</td><td>546</td><td>100%</td><td>Gippsland</td></tr><tr><td>EL007435</td><td>Goonerah</td><td>EL (Application)</td><td>587</td><td>100%</td><td>Gippsland</td></tr><tr><td>EL007425</td><td>Deddick</td><td>EL (Application)</td><td>341</td><td>100%</td><td>Gippsland</td></tr><tr><td>EL007428</td><td>Boebuck</td><td>EL (Application)</td><td>355</td><td>100%</td><td>NE Victoria</td></tr><tr><td>EL007426</td><td>Walwa</td><td>EL (Application)</td><td>499</td><td>100%</td><td>NE Victoria</td></tr><tr><td>EL007754</td><td>Tallandoon</td><td>EL (Application)</td><td>88</td><td>100%</td><td>NE Victoria</td></tr><tr><td>RL006615</td><td>Fairley's<sup>2</sup></td><td>Retention License</td><td>340 Ha</td><td>100%</td><td>NE Victoria</td></tr><tr><td>RL006616</td><td>Unicorn<sup>1&amp;2</sup></td><td>Retention License</td><td>23,243 Ha</td><td>100%</td><td>NE Victoria</td></tr><tr><td></td><td></td><td></td><td></td><td></td><td></td></tr><tr><td></td><td></td><td></td><td></td><td></td><td></td></tr></table> <p><b>All tenements remain in good standing at 31<sup>st</sup> December 2021.</b></p> <p><b>NOTE 1:</b> Unicorn Project area subject to a 2% NSR Royalty Agreement with Osisko Gold Royalties Ltd dated 29 April 2013.</p> <p><b>NOTE 2:</b> Areas subject to a 1.5% Founders NSR Royalty Agreement.</p> <p><b>NOTE 3:</b> Areas are subject to a 1.0% NSR Royalty Agreement with Minvest Corporation Pty Ltd (See DTM ASX Release 1 June 2016).</p> <p><b>NOTE 4:</b> Areas are subject to a 0.75% Net Smelter Royalty on gold production, payable to Bruce William McLennan.</p>	Tenement Number	Name	Tenement Type	Area (km <sup>2</sup> ) Unless specified	Interest	Location	MIN006619	Mt View <sup>2</sup>	Mining License	224 Ha	100%	NE Victoria	EL5315	Mitta Mitta <sup>4</sup>	Exploration Licence	148	100%	NE Victoria	EL006016	Rushworth <sup>4</sup>	Exploration Licence	32	100%	Central Victoria	EL006277	Empress	Exploration Licence	87	100%	NE Victoria	EL006300	Eskdale <sup>3</sup>	Exploration Licence	96	100%	NE Victoria	EL006486	Mt Creek	Exploration Licence	116	100%	NE Victoria	EL006861	Buckland	Exploration Licence	414	100%	NE Victoria	EL007007	Union <sup>4</sup>	Exploration Licence	3	100%	Central Victoria	EL006764	Cravensville	Exploration Licence	170	100%	NE Victoria	EL006865	Dart	EL (Application)	567	100%	NE Victoria	EL006866	Cudgewa	EL (Application)	508	100%	NE Victoria	EL006994	Wangara	EL (Application)	142	100%	Central Victoria	EL007008	Buckland West	EL (Application)	344	100%	NE Victoria	EL007099	Sandy Creek	EL (Application)	437	100%	NE Victoria	EL007170	Berringama	EL (Application)	27	100%	NE Victoria	EL007430	Buchan	EL (Application)	546	100%	Gippsland	EL007435	Goonerah	EL (Application)	587	100%	Gippsland	EL007425	Deddick	EL (Application)	341	100%	Gippsland	EL007428	Boebuck	EL (Application)	355	100%	NE Victoria	EL007426	Walwa	EL (Application)	499	100%	NE Victoria	EL007754	Tallandoon	EL (Application)	88	100%	NE Victoria	RL006615	Fairley's <sup>2</sup>	Retention License	340 Ha	100%	NE Victoria	RL006616	Unicorn <sup>1&amp;2</sup>	Retention License	23,243 Ha	100%	NE Victoria												
Tenement Number	Name	Tenement Type	Area (km <sup>2</sup> ) Unless specified	Interest	Location																																																																																																																																																									
MIN006619	Mt View <sup>2</sup>	Mining License	224 Ha	100%	NE Victoria																																																																																																																																																									
EL5315	Mitta Mitta <sup>4</sup>	Exploration Licence	148	100%	NE Victoria																																																																																																																																																									
EL006016	Rushworth <sup>4</sup>	Exploration Licence	32	100%	Central Victoria																																																																																																																																																									
EL006277	Empress	Exploration Licence	87	100%	NE Victoria																																																																																																																																																									
EL006300	Eskdale <sup>3</sup>	Exploration Licence	96	100%	NE Victoria																																																																																																																																																									
EL006486	Mt Creek	Exploration Licence	116	100%	NE Victoria																																																																																																																																																									
EL006861	Buckland	Exploration Licence	414	100%	NE Victoria																																																																																																																																																									
EL007007	Union <sup>4</sup>	Exploration Licence	3	100%	Central Victoria																																																																																																																																																									
EL006764	Cravensville	Exploration Licence	170	100%	NE Victoria																																																																																																																																																									
EL006865	Dart	EL (Application)	567	100%	NE Victoria																																																																																																																																																									
EL006866	Cudgewa	EL (Application)	508	100%	NE Victoria																																																																																																																																																									
EL006994	Wangara	EL (Application)	142	100%	Central Victoria																																																																																																																																																									
EL007008	Buckland West	EL (Application)	344	100%	NE Victoria																																																																																																																																																									
EL007099	Sandy Creek	EL (Application)	437	100%	NE Victoria																																																																																																																																																									
EL007170	Berringama	EL (Application)	27	100%	NE Victoria																																																																																																																																																									
EL007430	Buchan	EL (Application)	546	100%	Gippsland																																																																																																																																																									
EL007435	Goonerah	EL (Application)	587	100%	Gippsland																																																																																																																																																									
EL007425	Deddick	EL (Application)	341	100%	Gippsland																																																																																																																																																									
EL007428	Boebuck	EL (Application)	355	100%	NE Victoria																																																																																																																																																									
EL007426	Walwa	EL (Application)	499	100%	NE Victoria																																																																																																																																																									
EL007754	Tallandoon	EL (Application)	88	100%	NE Victoria																																																																																																																																																									
RL006615	Fairley's <sup>2</sup>	Retention License	340 Ha	100%	NE Victoria																																																																																																																																																									
RL006616	Unicorn <sup>1&amp;2</sup>	Retention License	23,243 Ha	100%	NE Victoria																																																																																																																																																									
Exploration done by other parties	<ul style="list-style-type: none"><li>Acknowledgment and appraisal of exploration by other parties.</li></ul>	<ul style="list-style-type: none"><li>Between 1986 and 1988 the Granite Flat area was worked by Meltech Ltd on behalf of Alluvial Prospectors Ltd, with soil sampling identifying strong soil anomalies and six diamond drill holes completed. From 1990 to 1995, CRA Exploration (now Rio Tinto) completed extensive exploration in the search for a bulk minable resource. This included expansion of the soil grid, sampling of 18 costeans, 32 reverse circulation (RC) and the 13 Diamond drillholes, along with aeromagnetic, ground magnetic and induced polarity surveys of the site. In late</li></ul>																																																																																																																																																												

		<p>1994 Perseverance Mining Ltd entered into a joint-venture agreement with CRA Exploration, working the Granite Flat prospect from 1996 to 1999, completing an additional 20 RC drill holes. From 2006 to 2008, Synergy Metals Ltd conducted minor stream sediment and soil sampling of the site before transferring the license to Glen Wills Gold Mines NL in 2009. Glen Wills Gold Mines held the license until 2016, completing some minor soil and stream sediment sampling studies.</p>
<b>Geology</b>	<ul style="list-style-type: none"> <li>• <i>Deposit type, geological setting and style of mineralisation.</i></li> </ul>	<ul style="list-style-type: none"> <li>• EL006277 is located in the Omeo structural zone of the Lachlan Fold Belt in eastern Victoria. The EL is underlain by metamorphosed Lower Ordovician Pinnak Sandstone and its higher-grade metamorphic equivalents in the Omeo Metamorphic Complex to the south. The Banimboola Quartz Monzodiorite (BQM) intruded during the early Devonian and is a highly magnetic I-type composite pluton that has been placed in the Boggy Plain Supersuite (Wyborn, et al., 1987). Aeromagnetic data from the Geo Vic database indicates that the BQM is a composite pluton with a variable magnetic signature.</li> </ul>
<b>Drill hole Information</b>	<ul style="list-style-type: none"> <li>• <i>A summary of all information material to the understanding of the exploration results including a tabulation of the following information for all Material drill holes:</i> <ul style="list-style-type: none"> <li>○ <i>easting and northing of the drill hole collar</i></li> <li>○ <i>elevation or RL (Reduced Level – elevation above sea level in metres) of the drill hole collar</i></li> <li>○ <i>dip and azimuth of the hole</i></li> <li>○ <i>down hole length and interception depth</i></li> <li>○ <i>hole length.</i></li> </ul> </li> <li>• <i>If the exclusion of this information is justified on the basis that the information is not Material and this exclusion does not detract from the understanding of the report, the Competent Person should clearly explain why this is the case.</i></li> </ul>	<ul style="list-style-type: none"> <li>• All drillhole data (location, RL, azimuth, dip, depth etc.) for drill holes EMDDH006 to EMDDH008 are presented in text of the main body of the report, and in Appendix 1.</li> <li>• Additional historic drillhole collar information is presented in previous Dart Mining ASX Announcements and Releases. An archive of historic Dart Mining ASX releases is held at: <a href="https://www2.asx.com.au/markets/trade-our-cash-market/announcements.dtm">https://www2.asx.com.au/markets/trade-our-cash-market/announcements.dtm</a></li> <li>• All down hole weighted average gold and copper grade data quoted as significant intersections is provided as down hole widths and calculated using a lower cut-off grade of 0.2 g/t Au and 500ppm Cu, with no more than 2m of internal dilution (unless otherwise stated).</li> <li>• All drill-related data are referenced to the original ASX report by date published. All details appear in the original report.</li> </ul>
<b>Data aggregation methods</b>	<ul style="list-style-type: none"> <li>• <i>In reporting Exploration Results, weighting averaging techniques, maximum and/or minimum grade truncations (e.g. cutting of high grades) and cut-off grades are usually Material and should be stated.</i></li> <li>• <i>Where aggregate intercepts incorporate short lengths of high-grade results and longer lengths of low-grade results, the procedure used for such aggregation should be stated and some typical examples of such aggregations should be shown in detail.</i></li> <li>• <i>The assumptions used for any reporting of metal equivalent values should be clearly stated.</i></li> </ul>	<ul style="list-style-type: none"> <li>• All drill-related data are referenced to the original ASX report by date published. All details appear in the original report.</li> </ul>
<b>Relationship between</b>	<ul style="list-style-type: none"> <li>• <i>These relationships are particularly important in the reporting of Exploration Results.</i></li> <li>• <i>If the geometry of the mineralisation with respect to the drill hole angle is</i></li> </ul>	<ul style="list-style-type: none"> <li>• The relationship between the drill hole and the geometry of the mineralised structures is not presented at this preliminary stage.</li> <li>• All drill-related data are referenced to the original ASX report by date published.</li> </ul>



<b>mineralisation widths and intercept lengths</b>	<p><i>known, its nature should be reported.</i></p> <ul style="list-style-type: none"> <li><i>If it is not known and only the down hole lengths are reported, there should be a clear statement to this effect (e.g. 'down hole length, true width not known').</i></li> </ul>	All details appear in the original report.
<b>Diagrams</b>	<ul style="list-style-type: none"> <li><i>Appropriate maps and sections (with scales) and tabulations of intercepts should be included for any significant discovery being reported. These should include, but not be limited to a plan view of drill hole collar locations and appropriate sectional views.</i></li> </ul>	<ul style="list-style-type: none"> <li>All drill-related data are referenced to the original ASX report by date published. All details appear in the original report.</li> </ul>
<b>Balanced reporting</b>	<ul style="list-style-type: none"> <li><i>Where comprehensive reporting of all Exploration Results is not practicable, representative reporting of both low and high grades and/or widths should be practiced to avoid misleading reporting of Exploration Results.</i></li> </ul>	<ul style="list-style-type: none"> <li>All drill-related data are referenced to the original ASX report by date published. All details appear in the original report.</li> </ul>
<b>Other substantive exploration data</b>	<ul style="list-style-type: none"> <li><i>Other exploration data, if meaningful and material, should be reported including (but not limited to): geological observations; geophysical survey results; geochemical survey results; bulk samples – size and method of treatment; metallurgical test results; bulk density, groundwater, geotechnical and rock characteristics; potential deleterious or contaminating substances.</i></li> </ul>	<ul style="list-style-type: none"> <li>Any other relevant information is discussed in the main body of the report.</li> </ul>
<b>Further work</b>	<ul style="list-style-type: none"> <li><i>The nature and scale of planned further work (e.g. tests for lateral extensions or depth extensions or large-scale step-out drilling).</i></li> <li><i>Diagrams clearly highlighting the areas of possible extensions, including the main geological interpretations and future drilling areas, provided this information is not commercially sensitive.</i></li> </ul>	<ul style="list-style-type: none"> <li>Planned work is discussed in the body of the report and is dependent on future company direction.</li> </ul>