

11 May 2022

## Thick Spodumene-Bearing Pegmatites Intercepted at Mavis Lake with Step Out Drill Holes

Critical Resources Limited (ASX:CRR) ("Critical Resources" or the "Company"), is pleased to advise that it has encountered **visual spodumene in another four step-out drill holes** at its 100% owned Mavis Lake Lithium Project, in Ontario, Canada.

The highest visual intersection is estimated to contain 40% spodumene within a 3.6m pegmatite interval, in drill hole MF22-65 (**Hole 6**). Additionally, MFF22-66 (**Hole 7**), encountered a visual intersection of 6.9m with an estimated 20% spodumene-bearing pegmatite from 99.6-106.5m.

### Highlights

- <sup>1, 2, 3</sup>**Significant spodumene intersected from 99.6-106.5m, in Hole 7. The white to grey pegmatite is estimated to contain 20% of fine to medium cream coloured, spodumene crystals over 6.9m**
- **Hole 7 demonstrates up-dip continuity of mineralisation observed in drill hole MF22-64 (Hole 5)**
- <sup>1, 2, 3</sup>**Significant spodumene hosted in two pegmatites from 126.4-128m and 129-132.6m, in Hole 6. The white to grey pegmatites are estimated to contain up to 40% of fine to medium cream coloured, spodumene crystals over 3.6m**
- **Hole 6 confirms lithium mineralisation is continuous along strike and depth in pegmatite 6**
- **All holes are step-out holes and targeting new mineralisation previously untested**
- **Intersection of semi-massive holmquistite in drill hole MF22-68 (Hole 9) demonstrates significant Li-metasomatism within the host rock**
- **Eight out of nine holes of the Mavis Lake drill program have intercepted visual spodumene-bearing pegmatites**
- **Approximately 20% of drilling has been completed on the ~5,000m inaugural drill program**

<sup>1</sup>In relation to the disclosure of visual mineralisation, the Company cautions that visual estimates of mineral abundance should never be considered a proxy or substitute for laboratory analysis. Laboratory assay results are required to determine the widths and grade of the visible mineralisation reported in preliminary geological logging. The Company will update the market when laboratory analytical results become available.

<sup>2</sup>The reported intersections are down hole measurements and are not necessarily true width

<sup>3</sup>Descriptions of the mineral amounts seen and logged in the core are qualitative, visual estimates (they are listed in order of abundance of estimated combined percentages). Quantitative assays will be completed by Activation Labs in Dryden, Ontario.

Critical Resources Managing Director Alex Biggs said: "The 40% visual spodumene mineralisation within pegmatite 6 is the highest representation of observed lithium mineralisation to date. We are noticing that pegmatite widths and spodumene mineralisation appear to both increase at depth within pegmatite 6. The down dip and along strike extension of pegmatite 6 will continue to be targeted during this drill program. The success we have experienced to date at Mavis Lake continues to demonstrate the quality of the asset, and we are looking forward to further successes as the drill program advances. The Company remains committed to its goal of working towards defining a JORC compliant Resource at Mavis Lake which will be both transformational for the Company and the project and will position Critical at the forefront of the lithium industry in Ontario"

**Figure 1: Close up images of large cream coloured spodumene crystals intercepted in Hole MF22-66 (Hole 7)**



#### **Significant Intersection of Spodumene-Bearing Pegmatite in MF22-65 (Hole 6)**

MF22-65 was designed to test the eastern continuity of the pegmatite intersected in MF22-64. A 6.2m wide, ~30% spodumene-bearing pegmatite was intersected with spodumene concentrations locally reaching up to ~40% (Figure 2). Spodumene appears as fine to medium-grained laths aligned to the weak foliation and slightly altered around their margins by sericite (Figure 3). This intercept is visually the highest potential Li- mineralisation observed to date.



**Figure 2: A significant intercept of white to grey pegmatite hosts approximately 30% of medium to large, white grey, spodumene crystals intersected from 126.4-128 and 129-132.6 metres downhole in Hole MF22-65 (Hole 6).**



**Figure 3: Close up images of cream coloured spodumene crystals MF22-65 (Hole 6)**





### Lithium Mineralisation Continues in MF22-66 (Hole 7)

Hole 7 was designed to test the up-dip extension of the pegmatite observed in MF22-64 (Hole 5) at the recommended spacing for the infill program. This hole was successful in intersecting 6.9 m wide, ~20% spodumene-bearing pegmatite from 99.6-106.5m (Figure 4).

**Figure 4: White to grey pegmatite hosts approximately 20% of medium to large, white grey, spodumene crystals intersected from 99.6-106.5 metres downhole in Hole MF22-66 (Hole 7)**



### Sericite Replacement of Spodumene Mineralisation in MF22-67 (Hole 8)

Lesser spodumene mineralisation was observed in MF22-67 (Hole 8). Approximately 5% spodumene was observed in an interval of 3.77m from 83 to 86.77m depth (Figure 5). Significant sericite replacing relict spodumene laths is observed within this interval.



**Figure 5: Close up of white to grey-pink pegmatite hosts approximately 5% of medium, white grey, spodumene crystals intersected from 83-86.77m downhole in Hole MF22-67 (Hole 8)**



#### **Pinched out pegmatite intersected in MF22-68 (Hole 9)**

Approximately <1m wide of <5% spodumene-bearing pegmatite was intersected from 83.62 to 84.5m depth (Figure 6). Significant semi-massive holmquistite is observed at 74 metres depth (Figure 7). Holmquistite is an Li-amphibole which occurs along the margins of pegmatites with the host rock. This holmquistite indicates significant lithium metasomatism within the host rock and potentially the drillhole being proximal to another Li-mineralised pegmatite.

**Figure 6: Close up of white to grey pegmatite that hosts approximately 5% of medium, white grey, spodumene crystals intersected from 83.62 to 84.5m downhole in Hole MF22-68 (Hole 9)**





**Figure 7: Blue-grey, fine-grain, semi-massive holmquistite observed at ~74m depth in MF22-68. Holmquistite is a Li-amphibole which typically occurs along the margins of lithium-bearing pegmatites within the host rock**



**Figure 8: Cross-section, looking west, of Pegmatite 6 (red shape) with previous drill hole traces (grey) and recently drilled holes of MF22-63 to MF22-67 (note: measurement in metres)**

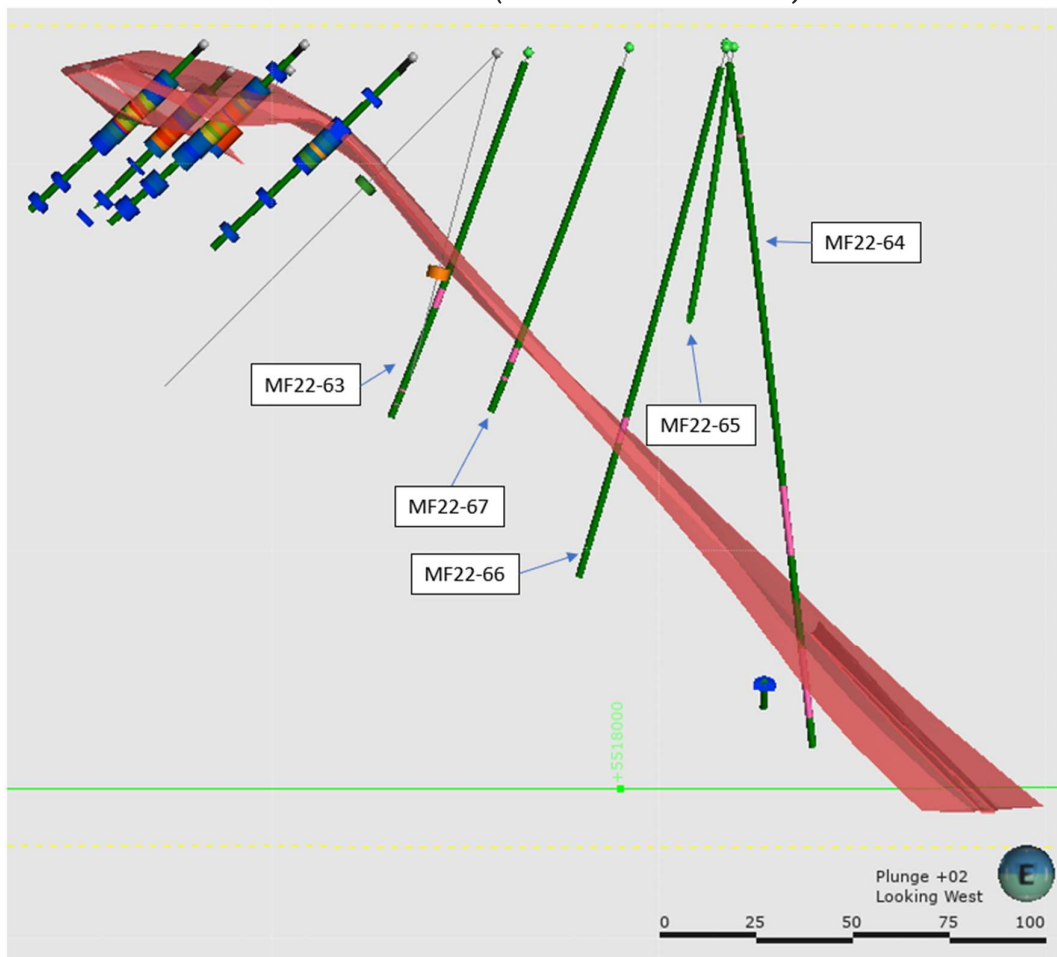
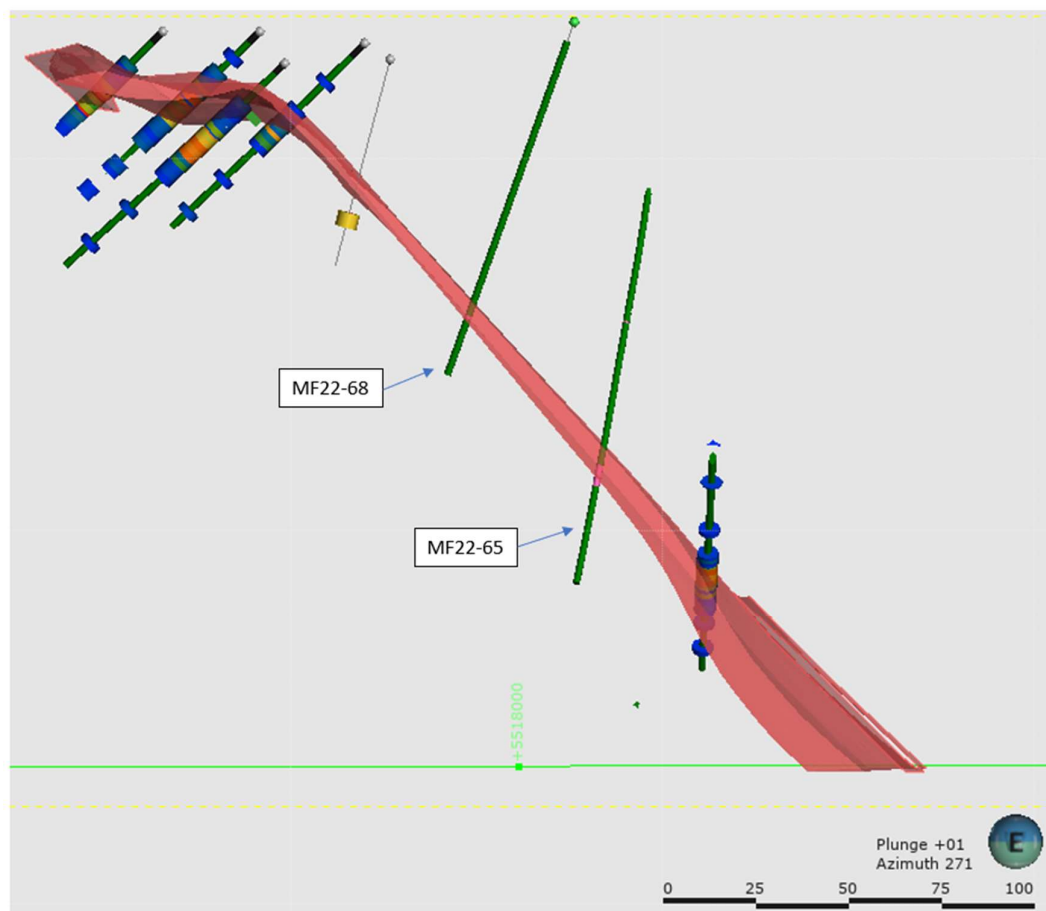


Figure 9: Cross-section, looking west, of Pegmatite 6 (red shape) with previous drill hole traces (grey) and recently drilled holes of MF22-65 and MF22-68 (note: measurement in metres)



The Mavis Lake Lithium Project is 19 kilometres east of the town of Dryden, Ontario. The Project is in close vicinity to the Trans-Canada highway and railway major transportation arteries linking larger cities such as Thunder Bay, Ontario, to the southeast and Winnipeg, Manitoba, to the west. The region boasts excellent infrastructure with hydro-power located a few kilometres to the south-west of the project. The region is a well-established lithium province with multiple projects located within the vicinity.

- 55.25m at 1.04% Li<sub>2</sub>O from 80.75m in drill hole MF18-53 and
- 26.30m at 1.70% Li<sub>2</sub>O from 111.9m inc. 7.70m at 2.97% Li<sub>2</sub>O from 130.5m in drill hole MF17-491.

Critical Resources Ltd | Level 11, 40 The Esplanade, Perth, WA, 6000 | P: +61 9389 4499 | web:criticalresources.com.au  
Email: admin@criticalresources.com.au | ABN 12 145 184 667 | ASX:CRR



Figure 11: Sample of Mavis Lake intersections from 2017 and 2018 drilling campaign

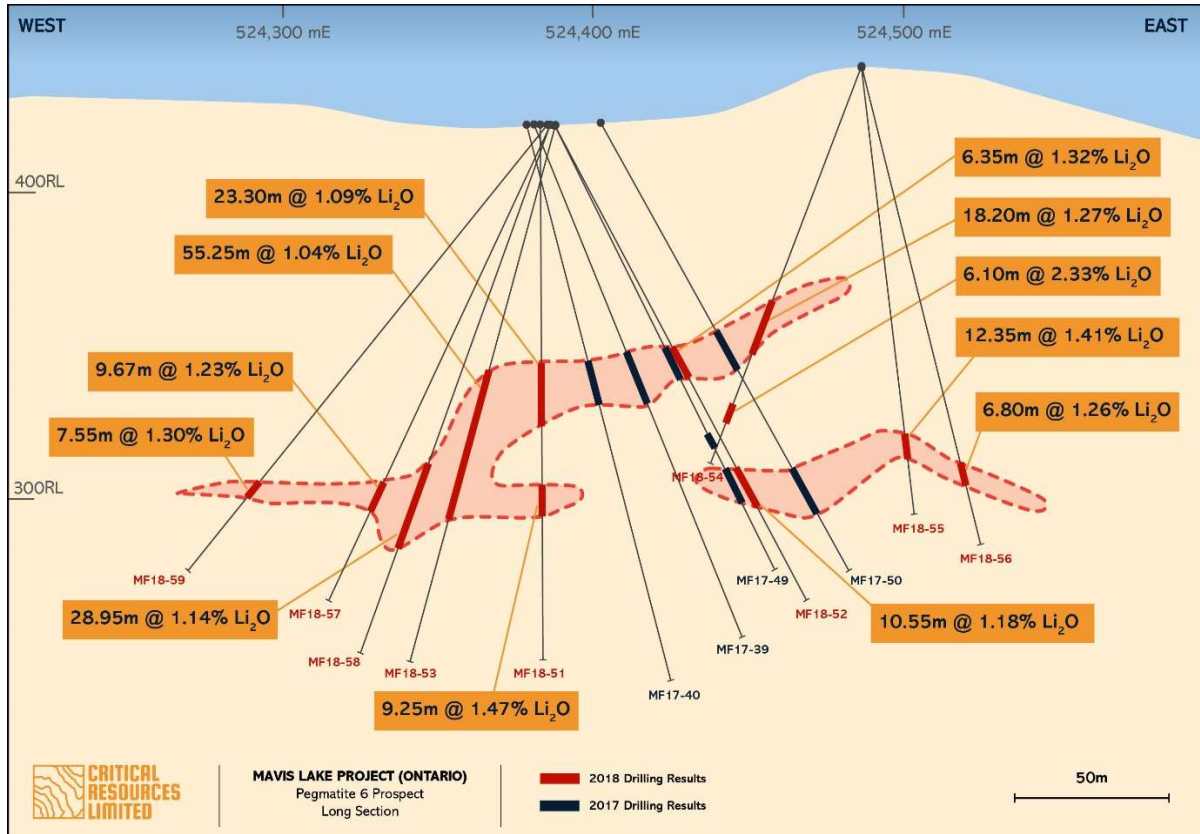


Figure 12: Mavis Lake project location



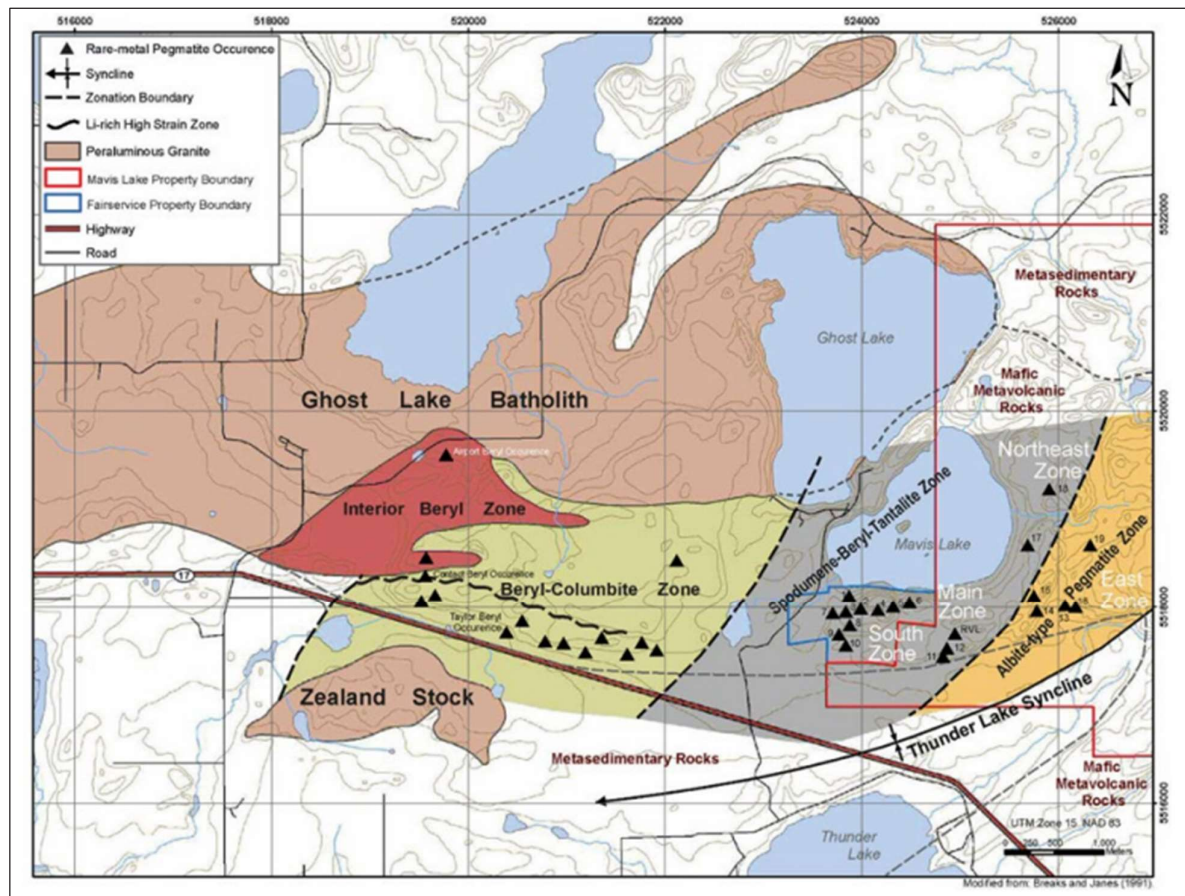
## Deposit Type and Exploration Thesis

Previous exploration campaigns at Mavis Lake have confirmed the presence of lithium-bearing pegmatites.

The pegmatite occurrences at Mavis Lake are found within the correct zonation for lithium enrichment from the Ghost Lake Batholith, a fertile granite intrusion. The zonation of pegmatite occurrences can be seen in Figure 13.

The recently conducted airborne survey (see ASX announcement 01 February 2022) demonstrated the potential continuity of geological trends between Pegmatite 6 and Pegmatite 18. This potential continuity represents new areas of interest for the company that will be investigated via surface mapping and sampling with the aim of identifying new drill targets.

**Figure 13: Regional zonation of Mavis Lake Pegmatite group**



Sources: Demmeier and Mercier (2011), modified from Breaks and James (1991)

## The Lithium Industry in Ontario

### Canadian Government's C\$3.8 Billion Critical Minerals Strategy

Recently announced strategy by the Canadian government to boost domestic production of lithium, copper and other strategic minerals to help propel the country's efforts to become a key part of the global electric vehicle supply chain. The spending, announced during Canada's federal budget unveiling on 7 April 22, promises grants for mineral surveying, processing and recycling, as well as tax credits for development of new mines and subsidies for infrastructure.

### Ontario's First-Ever Critical Mineral Strategy

In March of 2022 the government of Ontario announced their first-ever critical minerals strategy. The strategy aims to secure Ontario's position as a global leader of responsibly sourced critical minerals. To achieve this, collaboration is dependent between government, industry, Indigenous peoples, communities, and other stakeholders. Working together, this strategy will build a stronger, more resilient economy and revitalise local communities. The strategy is comprised of six pillars, or areas of government action, which will solidify Ontario's position as a global leader of responsibly sourced critical minerals. The pillars are; Enhancing geoscience information and supporting critical



minerals exploration, Growing Domestic processing and creating resilient supply chains, Improving Ontario's regulatory framework, Investing in innovation, research, and development, Building economic development opportunities with Indigenous partners, and Growing labour supply and developing a skilled labour force.

#### *Tesla Battery Gear Manufacturing Plant Opens*

Tesla has recently announced the opening of a battery gear manufacturing plant in Markham, Ontario demonstrating the significant opportunity for Ontario to become one of the world's leading lithium provinces. The facility will be the first branded Tesla Canada manufacturing facility in Canada. A significant amount of activity in the lithium exploration sector is currently occurring in Ontario. Due to the quality of lithium assets in the region, the fundamental drivers behind the lithium market and the intent of North American manufacturers to source lithium for battery manufacturing from localised supply-chains, it is an excellent time to be gaining a foothold in Ontario.

#### *Thunder Bay Regional Lithium Refinery*

Avalon Advanced Materials Inc (TSX:AVL) has recently announced the agreement of a binding letter of intent to develop a regional battery supply chain in Ontario and elsewhere. The first step of this development will be establishing a lithium refinery in Thunder Bay, Ontario, approximately 350km from the Mavis Lake Lithium Project. The plant aims for a production capacity of 20,000 tonnes per annum of lithium hydroxide and/or lithium carbonate. Sources of lithium concentrate will be initially from Avalon's Separation Rapids Lithium Project while other projects begin production.

**This announcement has been approved for release by the Board of Directors.**

-End-

#### **EXPLORATION WORK – COMPETENT PERSONS STATEMENT**

The information in this ASX Announcement that relates to Exploration Results is based on information compiled by Troy Gallik (P. Geo), a Competent Person who is a Member of the Association of Professional Geoscientists of Ontario. Troy Gallik is a full-time employee of Critical Resources Ltd. Troy Gallik has sufficient experience that is relevant to the style of mineralisation and type of deposit under consideration and to the activity being undertaken to qualify as a Competent Person as defined in the 2012 Edition of the "Australasian Code for Reporting of Exploration Results, Mineral Resources and Ore Reserves". Troy Gallik consents to the inclusion in this ASX Announcement of the matters based on his information in the form and context in which it appears.

#### **FORWARD LOOKING STATEMENTS**

Information included in this release constitutes forward-looking statements. Often, but not always, forward looking statements can generally be identified by the use of forward looking words such as "may", "will", "expect", "intend", "plan", "estimate", "anticipate", "continue", and "guidance", or other similar words and may include, without limitation, statements regarding plans, strategies and objectives of management, anticipated production or construction commencement dates and expected costs or production outputs.

Forward looking statements inherently involve known and unknown risks, uncertainties and other factors that may cause the Company's actual results, performance and achievements to differ materially from any future results, performance or achievements. Relevant factors may include, but are not limited to, changes in commodity prices, foreign exchange fluctuations and general economic conditions, increased costs and demand for production inputs, the speculative nature of exploration and project development, including the risks of obtaining necessary licences and permits and diminishing quantities or grades of reserves, political and social risks, changes to the regulatory framework within which the Company operates or may in the future operate, environmental conditions including extreme weather conditions, recruitment and retention of personnel, industrial relations issues and litigation.

Forward looking statements are based on the Company and its management's good faith assumptions relating to the financial, market, regulatory and other relevant environments that will exist and affect the Company's business and operations in the future. The Company does not give any assurance that the assumptions on which forward looking statements are based will prove to be correct, or that the Company's business or operations will not be affected in any material manner by these or other factors not foreseen or foreseeable by the Company or management or beyond the Company's control.

Although the Company attempts and has attempted to identify factors that would cause actual actions, events or results to differ materially from those disclosed in forward looking statements, there may be other factors that could cause actual results, performance, achievements or events not to be as anticipated, estimated or intended, and many events are beyond the reasonable control of the Company. Accordingly, readers are cautioned not to place undue reliance on forward looking statements. Forward looking statements in these materials speak only at the date of issue. Subject to any continuing obligations under applicable law or any relevant stock exchange listing rules, in providing this information the Company does not undertake any obligation to publicly update or revise any of the forward-looking statements or to advise of any change in events, conditions or circumstances on which any such statement is based.

#### **NO NEW INFORMATION**

Except where explicitly stated, this announcement contains references to prior exploration results, all of which have been cross-referenced to previous market announcements made by the Company. The Company confirms that it is not aware of any new information or data that materially affects the information included in the relevant market announcements.

#### **ABOUT CRITICAL RESOURCES LIMITED**

Critical Resources is a base metals and lithium exploration and development focused company headquartered in Perth, Western Australia and is listed on the Australian Securities Exchange (ASX:CRR). The Company has recently been undergoing a structured process of change at the Director and Executive level. These changes mark the commencement of a renewed focus by the Company on providing shareholder value through the exploration, development and advancement of the Company's long held NSW assets, its newly acquired Lithium assets in Canada and also of its Copper assets in Oman.



# Appendix 1: JORC Table 1 – MF22-65, MF22-66, MF-67 and MF22-68 Exploration Results

## 1.1 Section 1: Sampling Techniques and Data (Criteria in this section apply to all succeeding sections.)

Criteria	JORC-Code Explanation	Commentary
<b>Sampling techniques</b>	<i>Nature and quality of sampling (e.g., cut channels, random chips, or specific specialised industry standard measurement tools appropriate to the minerals under investigation, such as down hole gamma sondes, or handheld XRF instruments, etc). These examples should not be taken as limiting the broad meaning of sampling.</i>	<ul style="list-style-type: none"> <li>• Oriented NQ core was cut in half using a diamond saw, with a half core sent for assay and half core retained.</li> <li>• No other measurement tools other than directional survey tools have been used in the holes at this stage.</li> </ul>
	<i>Include reference to measures taken to ensure sample representivity and the appropriate calibration of any measurement tools or systems used.</i>	<ul style="list-style-type: none"> <li>• Oriented core was placed V-rail and a consistent cut-line drawn along core to ensure cutting (halving) of representative samples</li> </ul>
	<i>Aspects of the determination of mineralisation that are Material to the Public Report. In cases where 'industry standard' work has been done this would be relatively simple (e.g., 'reverse circulation drilling was used to obtain 1 m samples from which 3 kg was pulverised to produce a 30 g charge for fire assay'). In other cases more explanation may be required, such as where there is coarse gold that has inherent sampling problems. Unusual commodities or mineralisation types (e.g., submarine nodules) may warrant disclosure of detailed information.</i>	<ul style="list-style-type: none"> <li>• Core sample interval was based in logged mineralisation</li> <li>• Determination of mineralisation has been based on geological logging and photo analysis.</li> <li>• Diamond Core drilling was used to obtain 3m length samples from the barrel which are then marked in one meter intervals based on the drillers core block measurement.</li> <li>• Assay samples will be selected based on geological logging boundaries or on the nominal meter marks.</li> <li>• Samples will be dispatched to an accredited laboratory (ActLabs) in Dryden, Ontario, Canada for sample preparation and shipment to analysis</li> </ul>
<b>Drilling techniques</b>	<i>Drill type (e.g., core, reverse circulation, open-hole hammer, rotary air blast, auger, Bangka, sonic, etc) and details (e.g., core diameter, triple or standard tube, depth of diamond tails, face-sampling bit or other type, whether core is oriented and if so, by what method, etc).</i>	<ul style="list-style-type: none"> <li>• NQ2 diamond double tube coring by Cyr EF-50 rig was used throughout the hole.</li> <li>• Core orientation was carried out by the drilling contractor.</li> </ul>

Criteria	JORC-Code Explanation	Commentary
<b>Drill sample recovery</b>	<i>Method of recording and assessing core and chip sample recoveries and results assessed.</i>	<ul style="list-style-type: none"> <li>• Lithological logging, photography</li> <li>• Core samples were measured with a standard tape within the core trays. Length of core was then compared to the interval drilled, and any core loss was attributed to individual rock units based on the amount of fracturing, abrasion of core contacts, and the conservative judgment of the core logger. Results of core loss are discussed below.</li> </ul>
	<i>Measures taken to maximise sample recovery and ensure representative nature of the samples.</i>	<ul style="list-style-type: none"> <li>• Experienced driller contracted to carry out drilling.</li> <li>• In broken ground the driller produced NQ core from short runs to maximise core recovery.</li> <li>• Core was washed before placing in the core trays.</li> <li>• Core was visually assessed by professional geologists before cutting to ensure representative sampling.</li> </ul>
	<i>Whether a relationship exists between sample recovery and grade and whether sample bias may have occurred due to preferential loss/gain of fine/coarse material.</i>	<ul style="list-style-type: none"> <li>• See “Aspects of the determination of mineralisation that are Material to the Public Report” above.</li> </ul>
<b>Logging</b>	<i>Whether core and chip samples have been geologically and geotechnically logged to a level of detail to support appropriate Mineral Resource estimation, mining studies and metallurgical studies.</i>	<ul style="list-style-type: none"> <li>• Core samples were not geotechnically logged.</li> <li>• Core samples have been geologically logged to support appropriate Mineral Resource estimation, mining studies and metallurgical studies.</li> </ul>
	<i>Whether logging is qualitative or quantitative in nature. Core (or costean, channel, etc) photography.</i>	<ul style="list-style-type: none"> <li>• The core logging was qualitative in nature.</li> <li>• All core was photographed</li> </ul>
	<i>The total length and percentage of the relevant intersections logged.</i>	<ul style="list-style-type: none"> <li>• 100%</li> <li>• Total length of the MF22-65 was 161m</li> <li>• 100% of the relevant intersections were logged.</li> <li>• Total length of the MF22-66 was 143m</li> <li>• 100% of the relevant intersections were logged.</li> <li>• Total length of the MF22-67 was 101m</li> <li>• 100% of the relevant intersections were logged.</li> <li>• Total length of the MF22-68 was 104m</li> <li>• 100% of the relevant intersections were logged.</li> </ul>
<b>Sub-sampling techniques and sample preparation</b>	<i>If core, whether cut or sawn and whether</i>	<ul style="list-style-type: none"> <li>• No sampling completed at this stage</li> </ul>
	<i>If non-core, whether riffled, tube sampled, rotary split, etc and whether sampled wet or dry.</i>	
	<i>For all sample types, the nature, quality and appropriateness of the sample preparation technique.</i>	
	<i>Quality control procedures adopted for all sub-sampling stages to maximise representivity of samples.</i>	
	<i>Measures taken to ensure that the sampling is representative of the in situ material collected, including for instance results for field duplicate/second-half sampling.</i>	



Criteria	JORC-Code Explanation	Commentary
	<i>Whether sample sizes are appropriate to the grain size of the material being sampled.</i>	
<b>Quality of assay data and laboratory tests</b>	<i>The nature, quality and appropriateness of the assaying and laboratory procedures used and whether the technique is considered partial or total.</i>	<ul style="list-style-type: none"> <li>• No assays have been conducted for this drill program. Techniques will be updated when assays are completed.</li> </ul>
	<i>For geophysical tools, spectrometers, handheld XRF instruments, etc, the parameters used in determining the analysis including instrument make and model, reading times, calibrations factors applied and their derivation, etc.</i>	
	<i>Nature of quality control procedures adopted (e.g., standards, blanks, duplicates, external laboratory checks) and whether acceptable levels of accuracy (i.e., lack of bias) and precision have been established.</i>	
<b>Verification of sampling and assaying</b>	<i>The verification of significant intersections by either independent or alternative company personnel.</i>	<ul style="list-style-type: none"> <li>• No independent verification completed at this stage</li> <li>• No holes are twins of previous holes</li> <li>• Core measured, photographed and logged by geologists. Digitally recorded plus back-up records.</li> <li>• No assay data received at this stage</li> </ul>
	<i>The use of twinned holes.</i>	
	<i>Documentation of primary data, data entry procedures, data verification, data storage (physical and electronic) protocols.</i>	
	<i>Discuss any adjustment to assay data.</i>	
<b>Location of data points</b>	<i>Accuracy and quality of surveys used to locate drill holes (collar and down-hole surveys), trenches, mine workings and other locations used in Mineral Resource estimation.</i>	<ul style="list-style-type: none"> <li>• Drill collars recorded with Garmin GPS that has an accuracy in the order of <math>\pm 3</math> metres for location. A registered surveyor will be contracted to accurately survey all drill collars at completed of drill program.</li> <li>• WGS 1984 UTM Zone 15N</li> <li>• No specific topography survey has been completed over the project area</li> </ul>
	<i>Specification of the grid system used.</i>	
	<i>Quality and adequacy of topographic control.</i>	
<b>Data spacing and distribution</b>	<i>Data spacing for reporting of Exploration Results.</i>	<ul style="list-style-type: none"> <li>• Not relevant to current drilling.</li> <li>• Not relevant to current drilling.</li> <li>• No sample compositing has been applied.</li> </ul>
	<i>Whether the data spacing and distribution is sufficient to establish the degree of geological and grade continuity appropriate for the Mineral Resource and Ore Reserve estimation procedure(s) and classifications applied.</i>	
	<i>Whether sample compositing has been applied.</i>	

Criteria	JORC-Code Explanation	Commentary
<b>Orientation of data in relation to geological structure</b>	<i>Whether the orientation of sampling achieves unbiased sampling of possible structures and the extent to which this is known, considering the deposit type.</i>	<ul style="list-style-type: none"> <li>• The orientation of the mineralisation is unknown. The drilling program is aimed at determining orientation of the mineralisation.</li> <li>• It is uncertain whether sampling bias has been introduced, or whether the thickness drilled is a true thickness.</li> </ul>
	<i>If the relationship between the drilling orientation and the orientation of key mineralised structures is considered to have introduced a sampling bias, this should be assessed and reported if material.</i>	
<b>Sample security</b>	<i>The measures taken to ensure sample security.</i>	<ul style="list-style-type: none"> <li>• Core samples will be stored the Dryden core yard before delivery to ActLabsGroups in Dryden, Ontario for analysis.</li> </ul>
<b>Audits or reviews</b>	<i>The results of any audits or reviews of sampling techniques and data.</i>	<ul style="list-style-type: none"> <li>• Not undertaken at this stage</li> </ul>

## 2 Section 2: Reporting of Exploration Results

(Criteria listed in the preceding section also apply to this section.)

Criteria	JORC-Code Explanation	Commentary
<b>Mineral tenement and land tenure status</b>	<i>Type, reference name/number, location and ownership including agreements or material issues with third parties such as joint ventures, partnerships, overriding royalties, native title interests, historical sites, wilderness or national park and environmental settings.</i>	<ul style="list-style-type: none"> <li>• The Mavis Lake Lithium Project consists of 189 unpatented Single Cell Mining Claims and six separate surface leases which secure the surface rights of the land required for the Project footprint.</li> <li>• All claims and leases are active and in good standing. The leases have a term of 21 years and are not set to expire until 2032, at which time they can be renewed for an additional 21 years if required.</li> </ul>
	<i>The security of the tenure held at the time of reporting along with any known impediments to obtaining a licence to operate in the area.</i>	
<b>Exploration done by other parties</b>	<i>Acknowledgment and appraisal of exploration by other parties.</i>	<ul style="list-style-type: none"> <li>• Previous exploration has been conducted by a number of parties including Lun-Echo Gold Mines Limited (1956), Selco Mining Corporation (1979-1980), Tantalum Mining Corporation of Canada Limited (1981-1982), Emerald Field Resources (2002), International Lithium Corp (2006-2021) and Pioneer Resources Limited/Essential Metals Limited (2018-2021).</li> </ul>

Criteria	JORC-Code Explanation	Commentary																																			
Geology	Deposit type, geological setting and style of mineralisation.	<ul style="list-style-type: none"><li>The Fairservice and Mavis Lake Prospects host zoned pegmatites that are prospective for lithium and tantalum</li></ul>																																			
Drill hole Information	<p>A summary of all information material to the understanding of the exploration results including a tabulation of the following information for all Material drill holes:</p> <p>easting and northing of the drill hole collar</p> <p>elevation or RL (Reduced Level – elevation above sea level in metres) of the drill hole collar</p> <p>dip and azimuth of the hole</p> <p>down hole length and interception depth</p> <p>hole length.</p> <p>If the exclusion of this information is justified on the basis that the information is not Material and this exclusion does not detract from the understanding of the report, the Competent Person should clearly explain why this is the case.</p>	<table><tr><th>Hole ID</th><th>Easting</th><th>Northing</th><th>RL</th><th>Azimuth</th><th>Dip</th><th>To Depth</th></tr><tr><td>MF22-65</td><td>524256</td><td>5518028</td><td>447</td><td>110</td><td>-67</td><td>161</td></tr><tr><td>MF22-66</td><td>524256</td><td>5518026</td><td>448</td><td>202</td><td>-75</td><td>143</td></tr><tr><td>MF22-67</td><td>524254</td><td>5518006</td><td>451</td><td>190</td><td>-70</td><td>101</td></tr><tr><td>MF22-68</td><td>524288</td><td>5518000</td><td>443</td><td>163</td><td>-70</td><td>104</td></tr></table> <ul style="list-style-type: none"><li>Not relevant</li></ul>	Hole ID	Easting	Northing	RL	Azimuth	Dip	To Depth	MF22-65	524256	5518028	447	110	-67	161	MF22-66	524256	5518026	448	202	-75	143	MF22-67	524254	5518006	451	190	-70	101	MF22-68	524288	5518000	443	163	-70	104
Hole ID	Easting	Northing	RL	Azimuth	Dip	To Depth																															
MF22-65	524256	5518028	447	110	-67	161																															
MF22-66	524256	5518026	448	202	-75	143																															
MF22-67	524254	5518006	451	190	-70	101																															
MF22-68	524288	5518000	443	163	-70	104																															
Data aggregation methods	<p>In reporting Exploration Results, weighting averaging techniques, maximum and/or minimum grade truncations (e.g., cutting of high grades) and cut-off grades are usually Material and should be stated.</p> <p>Where aggregate intercepts incorporate short lengths of high grade results and longer lengths of low grade results, the procedure used for such aggregation should be stated and some typical examples of such aggregations should be shown in detail.</p> <p>The assumptions used for any reporting of metal equivalent values should be clearly stated.</p>	<ul style="list-style-type: none"><li>Uncut</li><li>All aggregate intercepts detailed on tables are weighted averages.</li><li>None used</li></ul>																																			



Criteria	JORC-Code Explanation	Commentary
<b>Relationship between mineralisation widths and intercept lengths</b>	<i>These relationships are particularly important in the reporting of Exploration Results.</i>	<ul style="list-style-type: none"> <li>• True width not currently known. All lengths are down-hole lengths and not true width.</li> </ul>
	<i>If the geometry of the mineralisation with respect to the drill hole angle is known, its nature should be reported.</i>	<ul style="list-style-type: none"> <li>• The precise geometry is not currently known but is being tested by the planned drilling, with diamond drill hole azimuths designed to drill normal to the interpreted mineralised structure.</li> </ul>
	<i>If it is not known and only the down hole lengths are reported, there should be a clear statement to this effect (e.g., 'down hole length, true width not known').</i>	<ul style="list-style-type: none"> <li>• Down-hole length reported, true width not known.</li> </ul>
<b>Diagrams</b>	<i>Appropriate maps and sections (with scales) and tabulations of intercepts should be included for any significant discovery being reported. These should include, but not be limited to a plan view of drill hole collar locations and appropriate sectional views.</i>	<ul style="list-style-type: none"> <li>• The drilling is aimed at clarifying the structure of the mineralisation.</li> </ul>
<b>Balanced reporting</b>	<i>Where comprehensive reporting of all Exploration Results is not practicable, representative reporting of both low and high grades and/or widths should be practiced to avoid misleading reporting of Exploration Results.</i>	<ul style="list-style-type: none"> <li>• Representative reporting of all relevant grades is provided in tables to avoid misleading reporting of Exploration Results.</li> </ul>
<b>Other substantive exploration data</b>	<i>Other exploration data, if meaningful and material, should be reported including (but not limited to): geological observations; geophysical survey results; geochemical survey results; bulk samples – size and method of treatment; metallurgical test results; bulk density, groundwater, geotechnical and rock characteristics; potential deleterious or contaminating substances.</i>	<ul style="list-style-type: none"> <li>• Overview of exploration data leading to selection of drill targets provided.</li> <li>• There were no deleterious elements identified.</li> </ul>
<b>Further work</b>	<i>The nature and scale of planned further work (e.g., tests for lateral extensions or depth extensions or large-scale step-out drilling).</i>	<ul style="list-style-type: none"> <li>• Drill program of 49 holes for a total of 5,000m to confirm, infill and extend previous drilling conducted by various parties.</li> </ul>