



5 MAY 2022

RIU SYDNEY

COMPETENT PERSON AND FORWARD LOOKING STATEMENT



This presentation is for information purposes only. Neither this presentation nor the information contained in it constitutes an offer, invitation, solicitation or recommendation in relation to the purchase or sale of shares in any jurisdiction. This presentation may not be distributed in any jurisdiction except in accordance with the legal requirements applicable in such jurisdiction. Recipients should inform themselves of the restrictions that apply in their own jurisdiction. A failure to do so may result in a violation of securities laws in such jurisdiction. This presentation does not constitute financial product advice and has been prepared without taking into account the recipient's investment objectives, financial circumstances or particular needs and the opinions and recommendations in this presentation are not intended to represent recommendations of particular investments to particular persons. Recipients should seek professional advice when deciding if an investment is appropriate. All securities transactions involve risks, which include (among others) the risk of adverse or unanticipated market, financial or political developments.

Certain statements contained in this presentation, including information as to the future financial or operating performance of S2 Resources Ltd (S2) and its projects, are forward-looking statements. Such forward-looking statements are necessarily based upon a number of estimates and assumptions that, whilst considered reasonable by S2, are inherently subject to significant technical, business, economic, competitive, political and social uncertainties and contingencies; involve known and unknown risks and uncertainties that could cause actual events or results to differ materially from estimated or anticipated events or results reflected in such forward-looking statements; and may include, among other things, statements regarding targets, estimates and assumptions in respect of metal production and prices, operating costs and results, capital expenditures, ore reserves and mineral resources and anticipated grades and recovery rates, and are or may be based on assumptions and estimates related to future technical, economic, market, political, social and other conditions. S2 disclaims any intent or obligation to update publicly any forward-looking statements, whether as a result of new information, future events or results or otherwise. The words "believe", "expect", "anticipate", "indicate", "contemplate", "target", "plan", "intends", "continue", "budget", "estimate", "may", "will", "schedule" and other similar expressions identify forward-looking statements. All forward-looking statements made in this presentation are qualified by the foregoing cautionary statements. Investors are cautioned that forward-looking statements are not guarantees of future performance and accordingly investors are cautioned not to put undue reliance on forward-looking statements due to the inherent uncertainty therein.

The information in this presentation that relates to Exploration Results is based on information compiled by Mr John Bartlett (for Australia and Finland) who is an employee and shareholder of the Company and which fairly represents this information. Mr Bartlett is a member of the Australasian Institute of Mining and Metallurgy and has sufficient experience of relevance to the styles of mineralisation and the types of deposits under consideration, and to the activities undertaken, to qualify as Competent Persons as defined in the 2012 Edition of the Joint Ore Reserves Committee (JORC) Australasian Code for Reporting of Exploration Results, Mineral Resources and Ore Reserves. Mr Bartlett consents to the inclusion in this presentation of the matters based on information in the form and context in which it appears. Exploration results are based on standard industry practices, including sampling, assay methods, and appropriate quality assurance quality control (QAQC) measures. Reverse circulation (RC), aircore (AC) and rotary air blast (RAB) drilling samples are collected as composite samples of 4 or 2 metres and as 1 metre splits (stated in results). Mineralised intersections derived from composite samples are subsequently re-split to 1 metre samples to better define grade distribution. Core samples are taken as half NQ core or quarter HQ core and sampled to geological boundaries where appropriate. The quality of RC drilling samples is optimised by the use of riffle and/or cone splitters, dust collectors, logging of various criteria designed to record sample size, recovery and contamination, and use of field duplicates to measure sample representivity. For soil samples, PGM and gold assays are based on an aqua regia digest with Inductively Coupled Plasma (ICP) finish and base metal assays may be based on aqua regia or four acid digest with inductively coupled plasma optical emission spectrometry (ICPOES) or atomic absorption spectrometry (AAS) finish. In the case of reconnaissance RAB, AC, RC or rock chip samples, PGM and gold assays are based on lead or nickel sulphide collection fire assay digests with an ICP finish, base metal assays are based on a four acid digest and inductively coupled plasma optical emission spectrometry (ICPOES) and atomic absorption spectrometry (AAS) finish, and where appropriate, oxide metal elements such as Fe, Ti and Cr are based on a lithium borate fusion digest and X-ray fluorescence (XRF) finish. In the case of strongly mineralised samples, base metal assays are based on a special high precision four acid digest (a four acid digest using a larger volume of material) and an AAS finish using a dedicated calibration considered more accurate for higher concentrations. Sample preparation and analysis is undertaken at Minanalytical, Genalysis Intertek, and laboratories in Perth and Kalgoorlie, Western Australia, ALS laboratories in Loughrea and Ireland. The quality of analytical results is monitored by the use of internal laboratory procedures and standards together with certified standards, duplicates and blanks and statistical analysis where appropriate to ensure that results are representative and within acceptable ranges of accuracy and precision. Where quoted, nickel-copper intersections are based on a minimum threshold grade of 0.25% Ni and/or Cu, and gold intersections are based on a minimum gold threshold grade of 0.1g/t Au unless otherwise stated. Intersections are length and density weighted where appropriate as per standard industry practice. In Australia, all sample and drill hole co-ordinates are based on the GDA/MGA grid and datum unless otherwise stated. In Finland, all sample and drill hole co-ordinates are based on the ETRS-TM35FIN grid and datum unless otherwise stated. Exploration results obtained by other companies and quoted by S2 have not necessarily been obtained using the same methods or subjected to the same QAQC protocols. These results may not have been independently verified because original samples and/or data may no longer be available.

1

Target “company making” discoveries with major economic potential

2

Team with a proven track record – discovered multiple mines, including Nova Ni-Cu-Co and Thunderbox Gold

3

Quality portfolio of gold and base metal exploration projects

4

Only operate in tier one jurisdictions

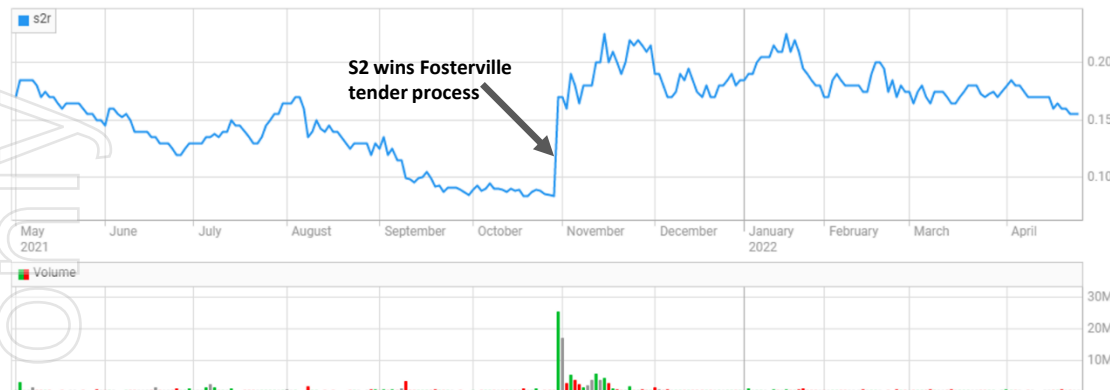
5

Disciplined capital management – whilst maintaining high exploration expenditure

CORPORATE OVERVIEW

SUPPORTIVE INSTITUTIONAL REGISTER

12-MONTH SHARE PRICE GRAPH



WELL FUNDED

Cash ¹	A\$6.4M
Investments ²	A\$3.6M
Debt	Nil

FAVOURABLE CAPITAL STRUCTURE

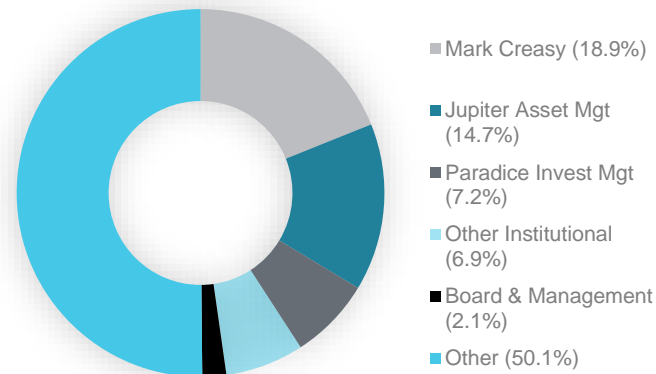
Shares on issue	356.4M
Options on issue ³	41.25M
Market Capitalisation ⁴	A\$53.5M
Enterprise Value	A\$47.1M

STRONG SHAREHOLDER BASE

Top 20 holders **60%**

Atypical institutionalised register for an explorer – reflects backing to make material discoveries

CURRENT SHAREHOLDERS



NOTES

1. Cash at 31st March 2022
2. 75.2m shares in Todd River Resources (ASX:TRT) @ A\$0.052/share
3. Weighted average price of A\$0.31 per option = A\$12.6m if exercised
4. Based on share price of A\$0.155 per ordinary share

TALENTED AND EXPERIENCED TEAM



Mark Bennett
Executive Chairman

EXPERIENCE:

Renowned geologist and experienced mining executive with 30+ years' experience

CORE SKILLS:

Economic discovery, project development, technical strategy capital markets, finance, ESG

MD & CEO OF SIRIUS



Matthew Keane
Chief Executive Officer

EXPERIENCE:

Geologist with more than 20 years' experience across mining and corporate finance

CORE SKILLS:

Mining operations, corporate development, investor relations, finance, analytics



Anna Neuling
Executive Director,
Company Secretary

EXPERIENCE:

Chartered accountant with 15 years' experience in financial and corporate roles in ASX-listed companies

CORE SKILLS:

Finance, accounting, risk management, corporate governance

BOARD OF SIRIUS



Jeff Dowling
Non-Executive Director

EXPERIENCE:

Chartered accountant with 40 years experience in the financial sector

CORE SKILLS:

Finance, accounting, auditing, risk management, transactions, commerce

BOARD OF SIRIUS



John Bartlett
EM Exploration

EXPERIENCE:

Geologist with over 25 years' mine & exploration experience

CORE SKILLS:

Exploration, geophysics, mining, operations

KEY MEMBER OF SIRIUS TEAM



Andy Thompson
GM Geology

EXPERIENCE:

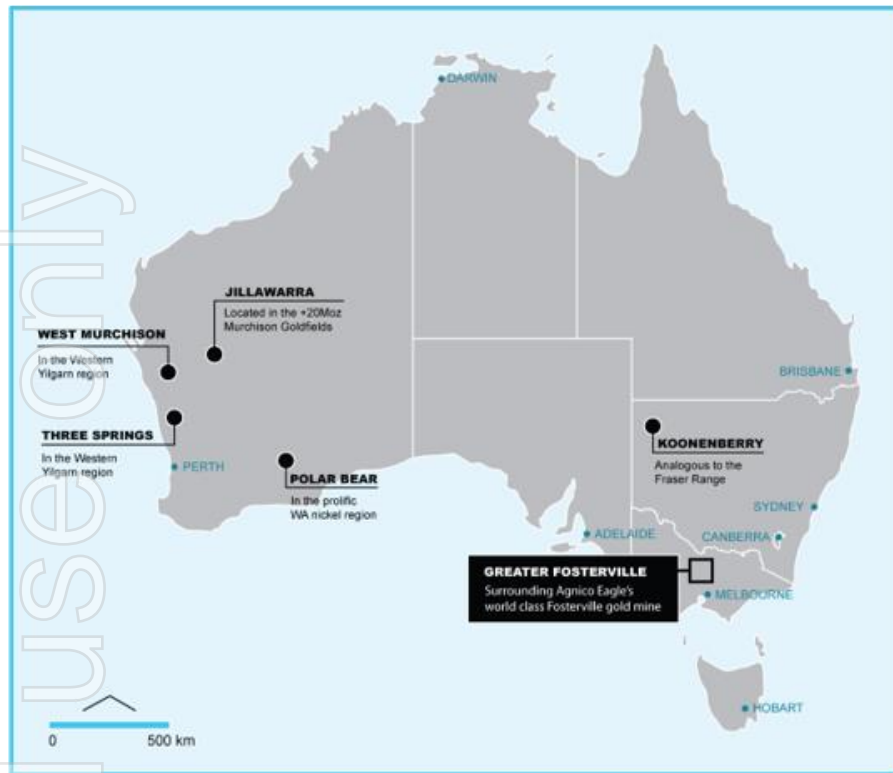
Geologist with over 25 years' mine & exploration experience

CORE SKILLS:

Exploration, resource estimation, production

KEY MEMBER OF SIRIUS TEAM

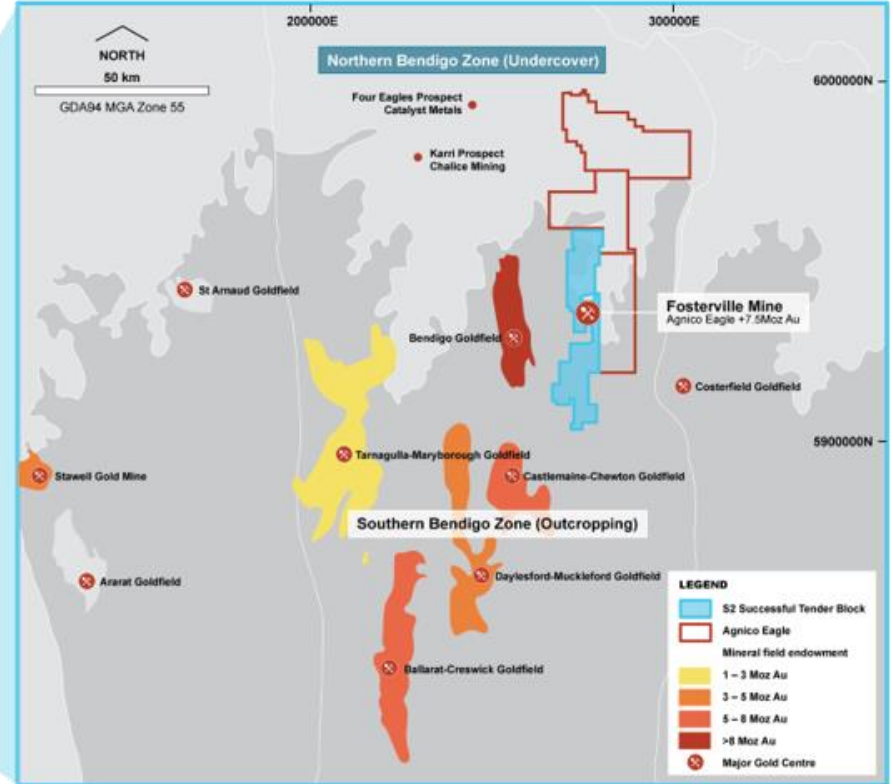
EXPLORING TIER 1 JURISDICTIONS



GREATER FOSTERVILLE
MOST SOUGHT AFTER EXPLORATION
BLOCK IN AUSTRALIA

GREATER FOSTERVILLE

MOST SOUGHT AFTER BLOCK IN AUSTRALIA



GREATER FOSTERVILLE - FUNDAMENTALS



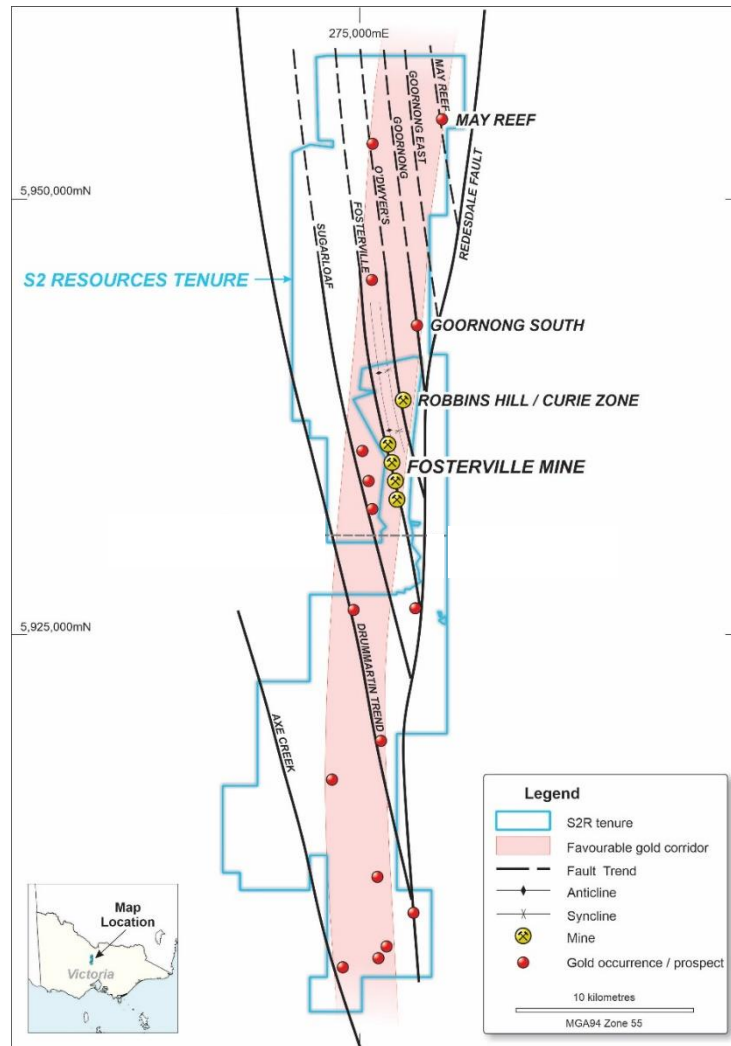
100%



Ownership	100% S2 Resources - won in highly competitive Victorian ground release tender process
Premier location	Flagship project - surrounds Agnico Eagle Mines' world class +7.5Moz Fosterville Gold Mine
Tenement	Extensive landholding of 394km ² over a 55km strike
Prospectivity	Multiple known gold occurrences and anomalies – Structures and stratigraphy hosting Fosterville mine extends into S2's tenure both north and south
Drill Ready	Multiple drill-ready targets and intercepts awaiting follow-up
Expenditure	5-year spending commitment of A\$10.4M, approx. A\$2M spend in first two years - Agnico Eagle committed ~A\$90M across surrounding three blocks

GREATER FOSTERVILLE WALK-UP TARGETS

- Substantial historical data, including geophysical and geochemical surveys
- Identified targets either undrilled or shallow-drilled
- Geologically not undercover



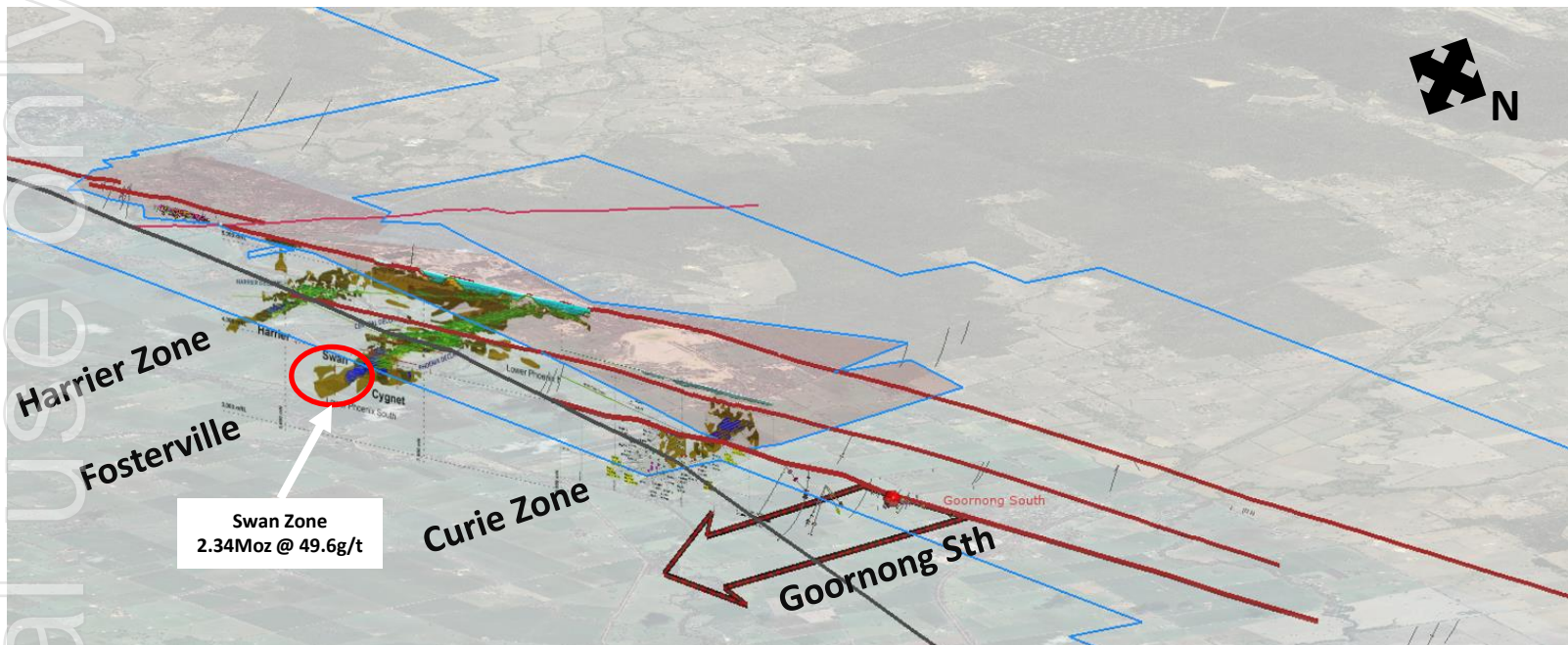
GREATER FOSTERVILLE

GOORNONG SOUTH TARGET

Goornong South target located 2.5km north of Fosterville Mining Licence on S2 ground

- Oxide gold mineralisation at surface with a +2km long surface geochemical anomaly
- Limited deeper drilling shows mineralisation at depth on a similar plunge orientation to Fosterville mine lodes
- Intercepts including: 3.1m @ 5.0 g/t Au from 84.2m in GSDD090

Agnico's Curie Zone could also extend into S2's licence at depth based on current plunge orientation



Internal use only



QUALITY PIPELINE OF PROJECTS

POLAR BEAR

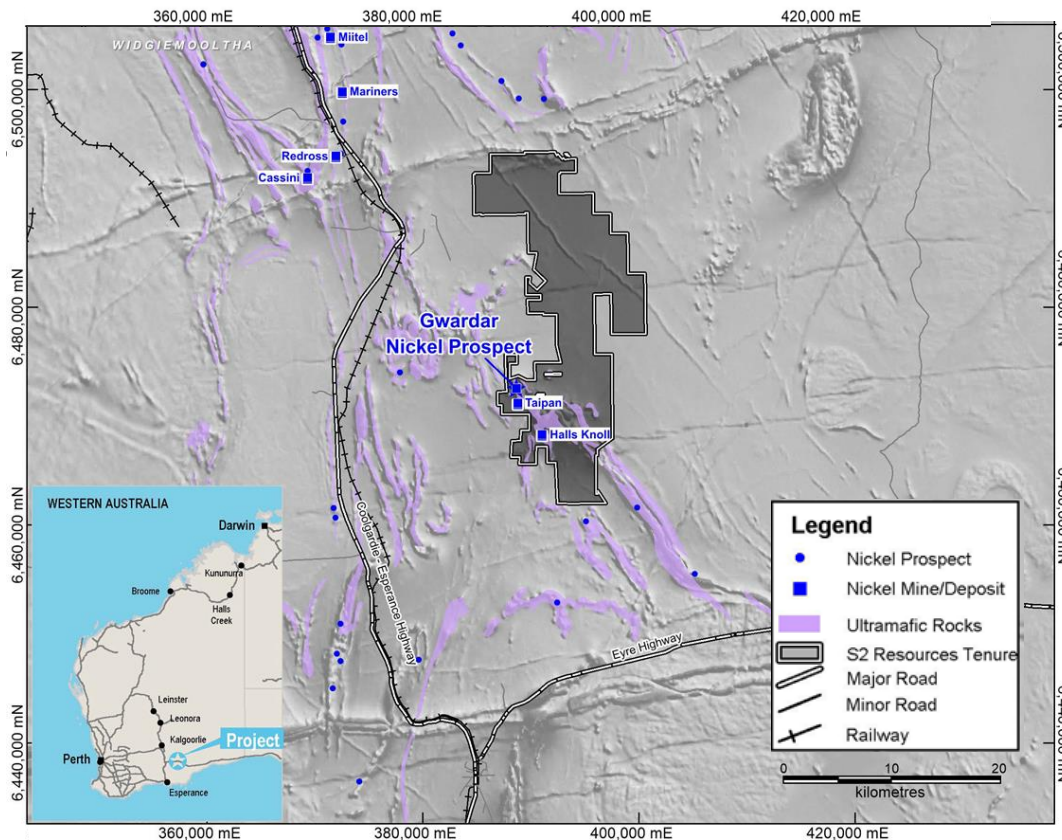
FERTILE NICKEL SULPHIDE SYSTEM – ONLY 10% EXPLORED TO DATE

Underexplored nickel sulphide system

- Nickel rights over 568km²
- Southern extension of the prolific Kambalda – Widgiemooltha nickel trends
- Only ~1km of 10km tested to date
- 3 nickel occurrences identified at Gwardar, Taipan and Halls Knoll

Better results to date:

- Taipan: 4.1m @ 3.8% Ni, 2.45% Cu, 0.08% Co & 2.49g/t Pt-Pd from 104.4m, incl. 2.2m @ 5.84% Ni, 3.73% Cu, 0.12% Co & 2.75g/t Pt-Pd
- Gwardar: 17.8m @ 0.75% Ni from 183m, incl. 0.8m @ 2.41% Ni
- Halls Knoll: 9m @ 1.0% Ni, 0.22% Cu & 0.17g/t Pt-Pd from 2m



POLAR BEAR

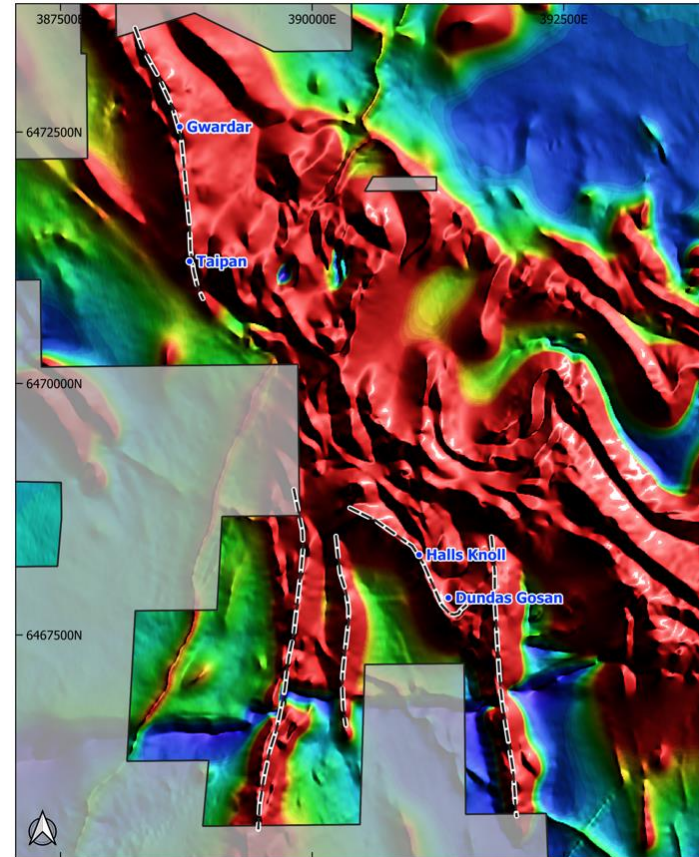
EXPLORATION RECOMMENCING FROM MAY 2022

S2 recommencing exploration

- Deep penetrating SQUID EM commencing May 2022
- Aircore drilling planned both on-land and on the salt lake
- Diamond and RC drilling along strike from known mineralisation and on newly identified targets



Photo: Halls Knoll gossan grading up to 12g/t PGEs, 3% Cu and 1% Ni



WESTERN YILGARN

NEW NICKEL-COPPER-PGE FRONTIER IN WESTERN AUSTRALIA

Exposure to over 1,000km² in the emerging Western Yilgarn province

- Host to Chalice Mines' 330Mt Ni-Cu-PGE Julimar discovery

West Murchison Project

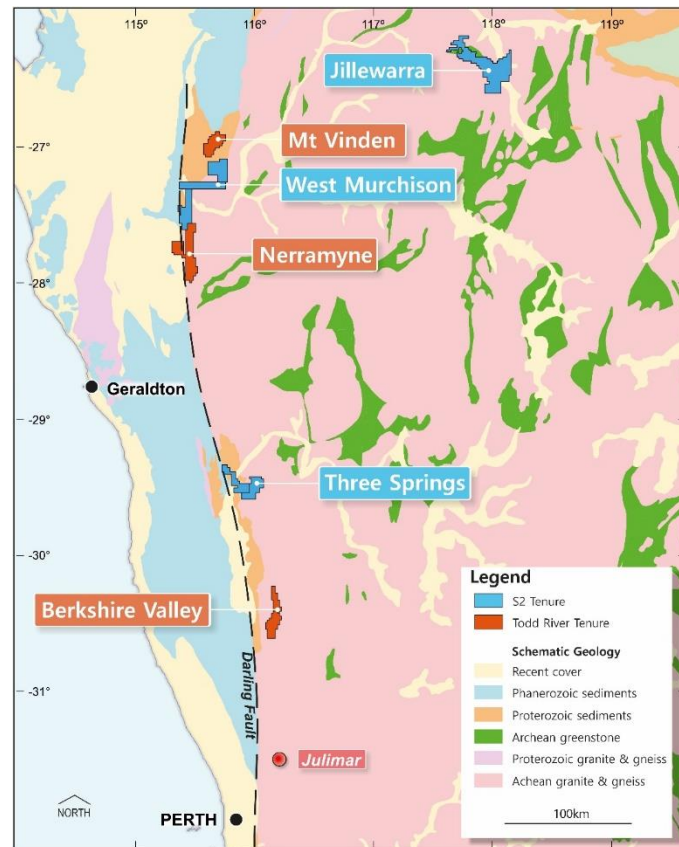
- Maiden RC drilling in 2022 intercepted disseminated sulphides
- Hole SWMC007 – Two zones of disseminated sulphides totaling 8m, with highest grade interval grading 1.06% Cu and 0.70% Ni over 1m
- Follow-up drilling planned once heritage clearance area is extended

Three Springs Project

- Several prominent magnetic features, interpreted to be ultramafic intrusions with coincident anomalous Ni-Cu-PGEs in soil geochemistry
- Airborne EM survey results awaited

13.2% shareholding in Todd River Resources (ASX:TRT)

- Berkshire Valley Project: Significant Ni-Cu-PGE geochemical anomaly over mafic/ultramafic geology - disseminated sulphides in limited drilling
- Recent airborne EM identified bedrock conductors at Nerramayne Project



CENTRAL LAPLAND GREENSTONE BELT - FINLAND

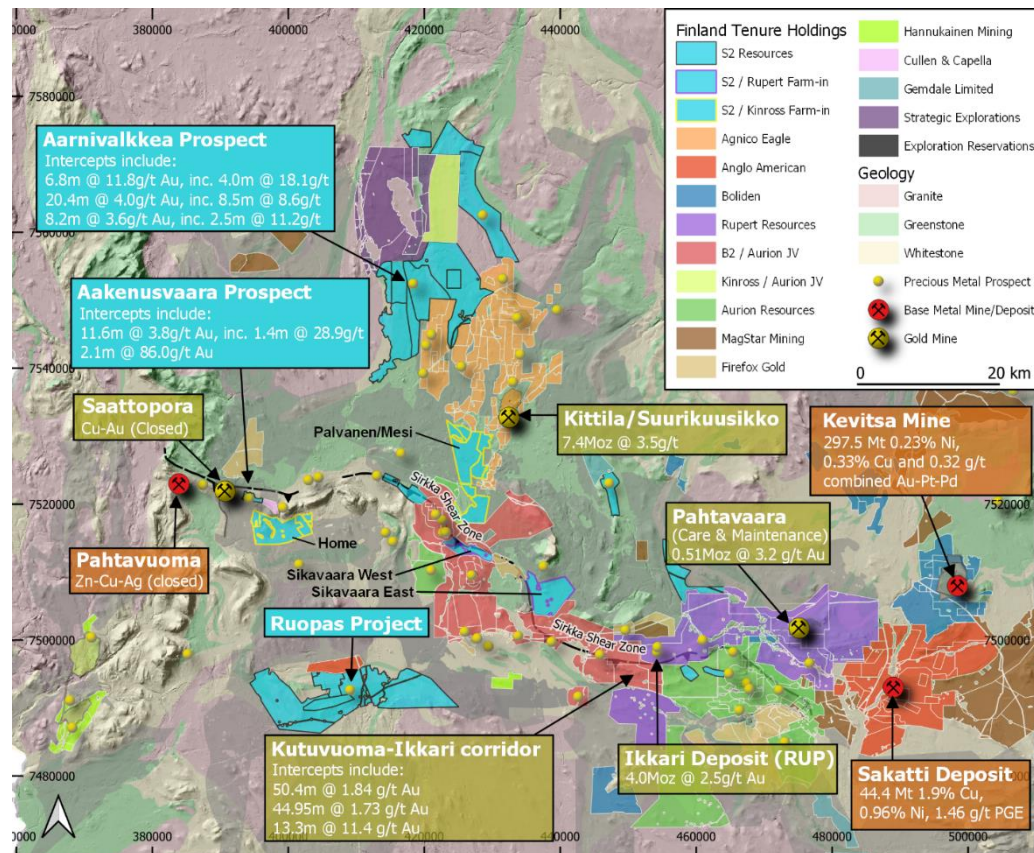
EMERGING LODE GOLD AND BASE METAL PROVINCE

Strategic 557km² landholding in emerging gold and base metal province

- Host to S2's Aarnivalkeä gold discovery
- Region also host to Rupert Resources' maiden 3.95 Moz gold Ikkari discovery (released 2021)
- B2 Gold / Aurion Resources JV emerging discovery at the Kutuvuoma East, with intercepts including 52m grading 1.84g/t gold

Two farm-in agreements with quality partners:

- Kinross Gold earning in up to 70% on 83km² 6 year spend up to US\$9.5M (~A\$12.6M)
- Rupert Resources earning in up to 70% on 37km² 6 year spend up to €3.4M (~A\$5.2M)



CENTRAL LAPLAND GREENSTONE BELT - FINLAND

AARNIVALKEA – SCALE, HIGH GRADE, PROXIMITY TO MAJOR GOLD MINE

System has scale: 1.3km gold anomaly

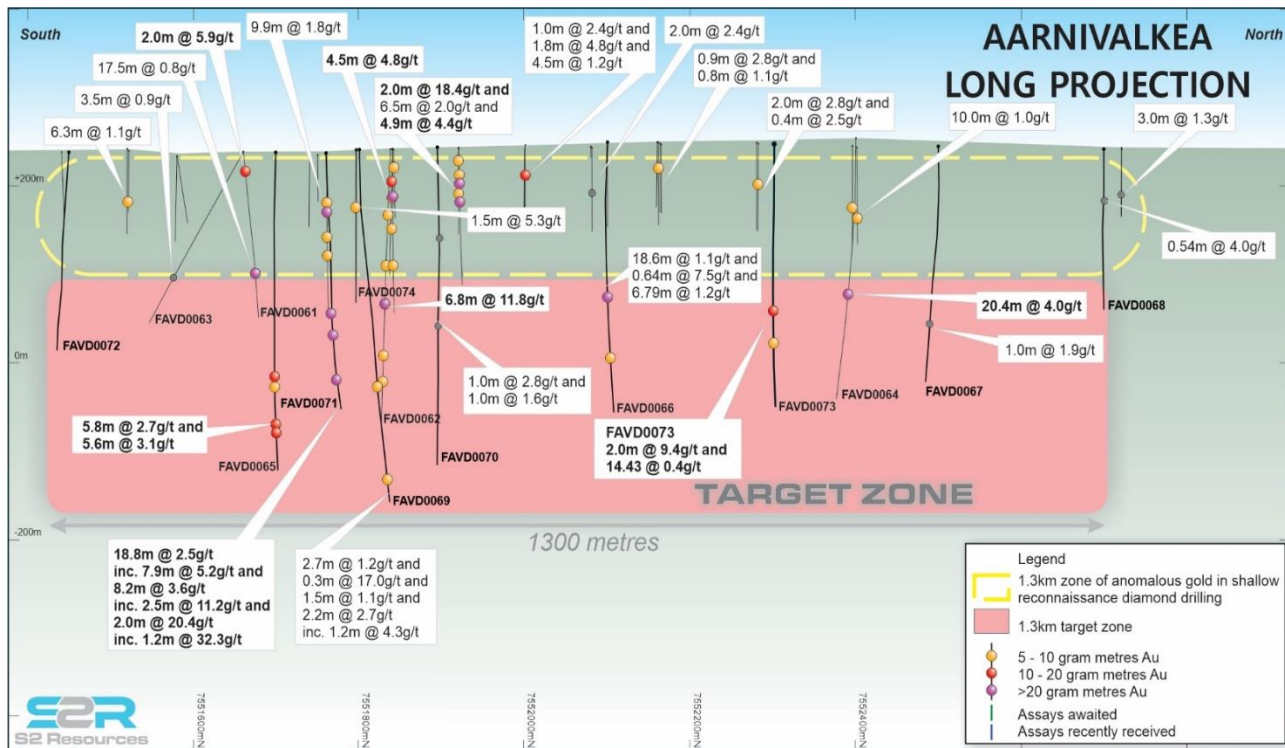
Propensity for high-grade intercepts, including:

- 6.8m @ 11.8g/t gold from 223.0m, including 4.0m @ 18.1g/t gold
- 20.4m @ 4.0g/t gold from 193.1m, including 8.5m at 8.6g/t gold

Proximal to a major regional fault and running parallel to host structure of the nearby 7.4Moz Kittilä gold mine



Photo: Hole FAVD0064 core section grading 73.6g/t gold

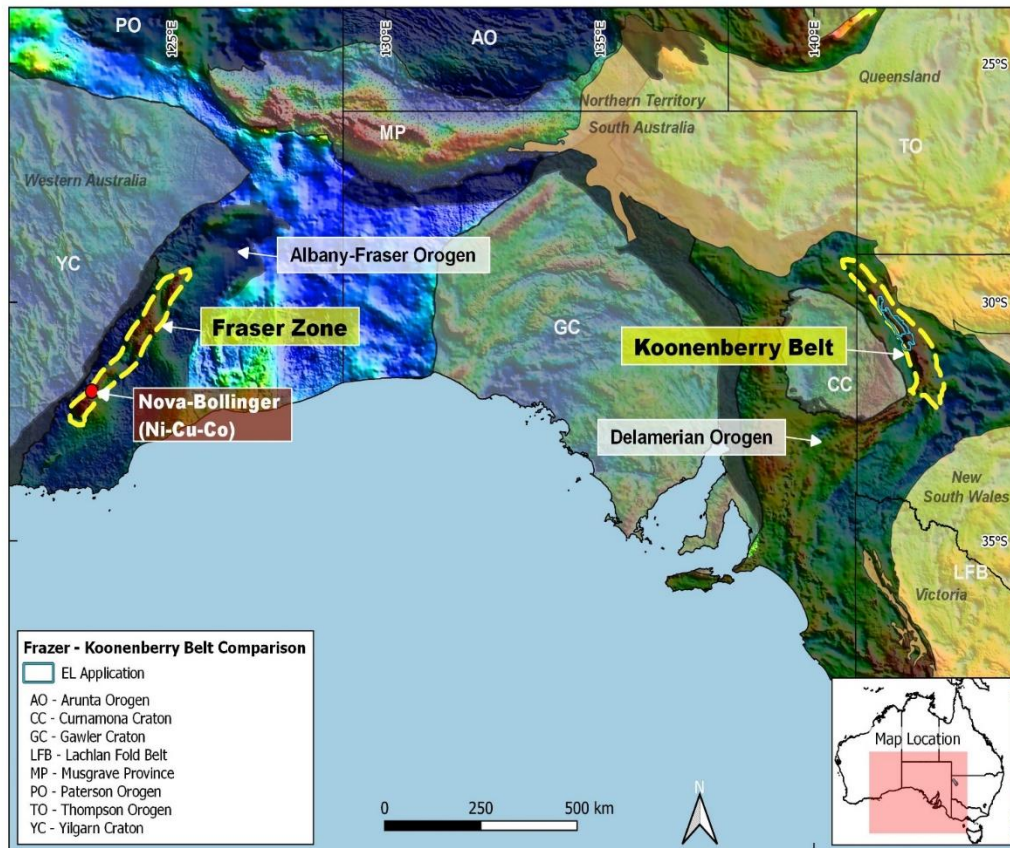
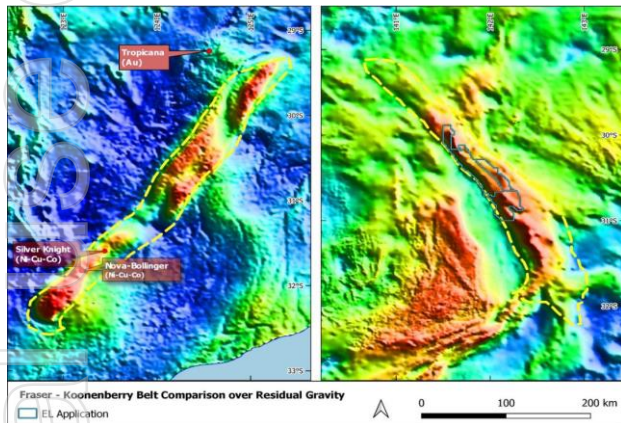


KOONENBERRY

BELT SCALE NICKEL-COPPER-PGE OPPORTUNITY

Belt scale project suited to S2 team's skill set

- Analogous craton edge setting to Nova Bollinger Ni-Cu-Co deposit (discovered by S2's team)
- Project area covers 2,712km²
- Little exploration since 2010 when previous owner Vale-Inco departed Australia
- Native Title Right to Negotiate process underway
- EM, geochemical surveys and follow up drilling planned for Financial Year 2023



JILLEWARRA JOINT VENTURE

CONSOLIDATED GREENSTONE BELT IN THE MURCHISON GOLDFIELDS

S2 earning up to 70% in an underexplored greenstone belt

- Prospective for gold and VMS style base metals
- 50km strike and only 50km from Meekatharra gold mining centre
- 30+ targets identified by S2
- Intercepts from Chesterfield area (in southeast of project) include:
 - 20m @ 1.9g/t Au from 92m, incl. 4m @ 6.8g/t Au (RC)
 - 4m @ 11.1g/t Au from 28m (RC)
 - 16m @ 1.5g/t Au from surface, incl. 4m @ 4.8g/t AU (aircore)



Photo: Example of prolific historic working within the belt





CONTACT US

4/24 Parkland Road
Osborne Park WA 6017

Telephone: +61 8 6166 0240

Facsimile: +61 8 6270 5410

Email: admin@s2resources.com.au