

22 April 2022

**BOARD AND MANAGEMENT**

MR LINDSAY DUDFIELD  
NON-EXECUTIVE CHAIRMAN

MR JAMES WILSON  
CHIEF EXECUTIVE OFFICER

MS LIZA CARPENE  
NON-EXECUTIVE DIRECTOR

MR ANTHONY HO  
NON-EXECUTIVE DIRECTOR

MS CARLY TERZANIDIS  
COMPANY SECRETARY

**PROJECTS**

LAKE REBECCA (ALY 100%)

KARONIE (ALY 100%)

LACHLAN (ALY 80%)

WEST LYNN (ALY 80%)

BRYAH BASIN (ALY 20%, TSX-V SGI  
80%)

BRYAH BASIN (ALY 20%, SFR 80%)

## Multiple Lithium anomalies at Karonie

### HIGHLIGHTS

- An in-depth review of multi-element soil and drillhole geochemistry sampling data has highlighted areas of lithium and coincident indicator anomalism at the 100% owned Karonie tenements 110km east of Kalgoorlie.
- The multi-element signatures of these soil anomalies are consistent with possible hard rock lithium mineralisation associated with lithium-caesium-tantalum (LCT) type pegmatites.
- Lithium and pathfinder anomalism defined over an area of 7km x 1km at the new “Pecan, Mesquite, Hickory and Cherry Prospects”.
- New anomalies sit 8km along strike and within contiguous tenure to Global Lithium Resources Limited’s (ASX: GL1) 80% owned Manna Lithium deposit (9.9Mt @ 1.14% Li<sub>2</sub>O<sup>1</sup>).
- Ground truthing of anomalies has discovered outcropping pegmatites with up to 1km length which were not previously mapped by Geological Survey of WA (GSWA).
- 4 new high priority lithium targets to test over an initial 7km x 1km zone of anomalism.

Alchemy Resources Limited (ASX: ALY) (“Alchemy” or “the Company”) is pleased to announce it has identified a new coherent lithium and pathfinder elements anomalous corridor at its 100% owned Karonie Gold Project located east of Kalgoorlie in Western Australia. The tenements sit contiguous and 8km along strike of the Manna Lithium Deposit owned by Global Lithium Resources Limited and Breaker Resources NL (ASX: GL1 80%, ASX:BRB 20%).

**Chief Executive Officer Mr James Wilson commented:** “The lithium and pathfinder anomalism identified by Alchemy’s soil sampling and recent rock chipping in proximity to Manna are an encouraging start. Mapping by our geologists has shown pegmatites in outcrop along strike of Manna which is made more significant by the fact that there’s been no pegmatites mapped in this region before. The geochemical review reaffirms the prospectivity of our large tenement package at Karonie in what has historically only ever seen gold and base metals exploration. Work is continuing to identify the other intrusive dykes in the vicinity through a program of detailed mapping and sampling.”

<sup>1</sup> Refer Global Lithium Resources Limited ASX Announcement 17 February 2022

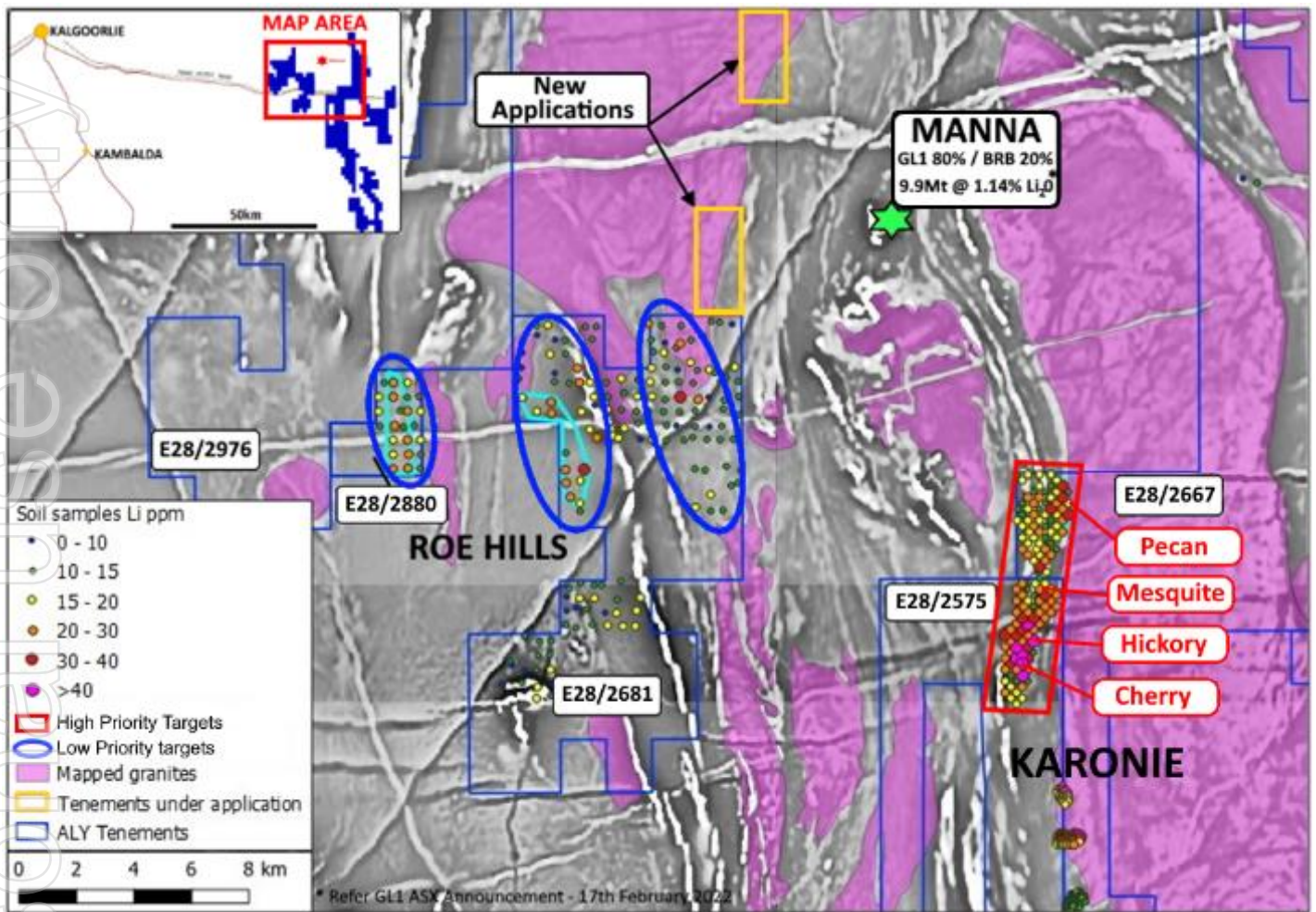


Figure 1: ALY tenements location showing GSWA mapped granites and soil geochemistry results

### NEW LITHIUM PROSPECT IDENTIFICATION – CHERRY, HICKORY, MESQUITE AND PECAN

Alchemy conducted multi-element soil sampling at Pecan/Mesquite/Hickory/Cherry on a 400x400m offset grid (Figure 1, RHS) and formed part of a multi-commodity review. The analysis of lithium and pathfinder elements shows a strong pattern of anomalism over 7km long x 1km wide (Figure 2) with the northern zone having increasing levels of surface cover which could have obscured outcrops. Alchemy's KZ5 deposit<sup>2</sup> located in the southern portion and adjacent to Cherry Prospect is a gold deposit which is believed to be VMS hosted mineralisation with significant drilling being undertaken by Alchemy in 2021. The areas of lithium soil anomalism to the east of the KZ5 gold deposit have never been drill-tested.

The areas sit within the prospective "Goldilocks Zone", a defined corridor in which LCT pegmatite exist. The zone lies outboard of the granitic terrain and within the greenstone belts.

Alchemy geologists have since conducted initial ground truthing of the anomalies which has revealed outcropping pegmatites at Hickory Prospect and was traced over 1km along strike (Figure 3). A second pegmatite outcrop was mapped at Cherry Prospect (Figure 3). Importantly, GSWA mapping had not mapped the pegmatite outcrops recently identified by Alchemy.

<sup>2</sup> Refer to Alchemy Resources ASX release 31 August 2021

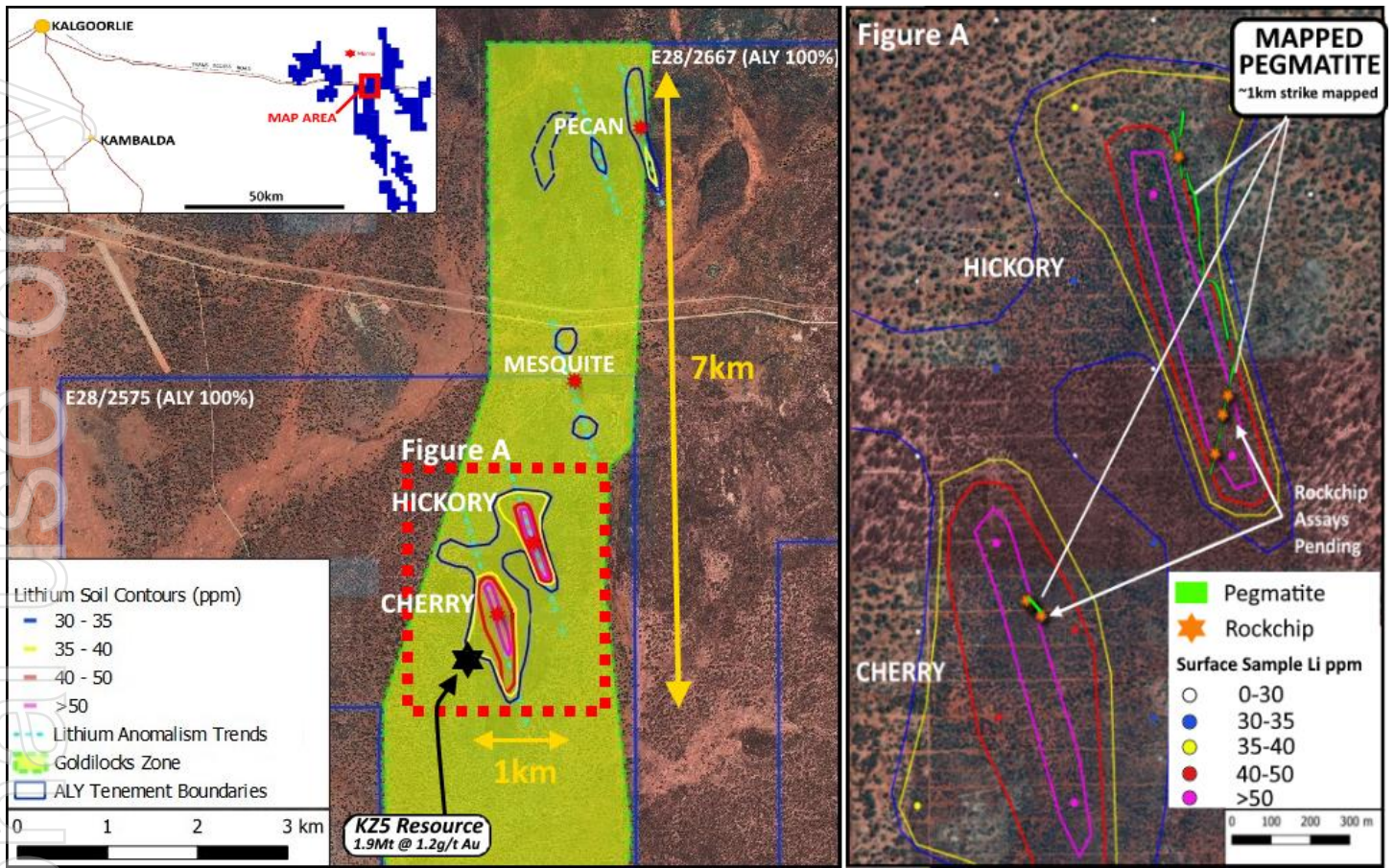


Figure 2: Lithium Anomalism and mapped pegmatites at the new prospects

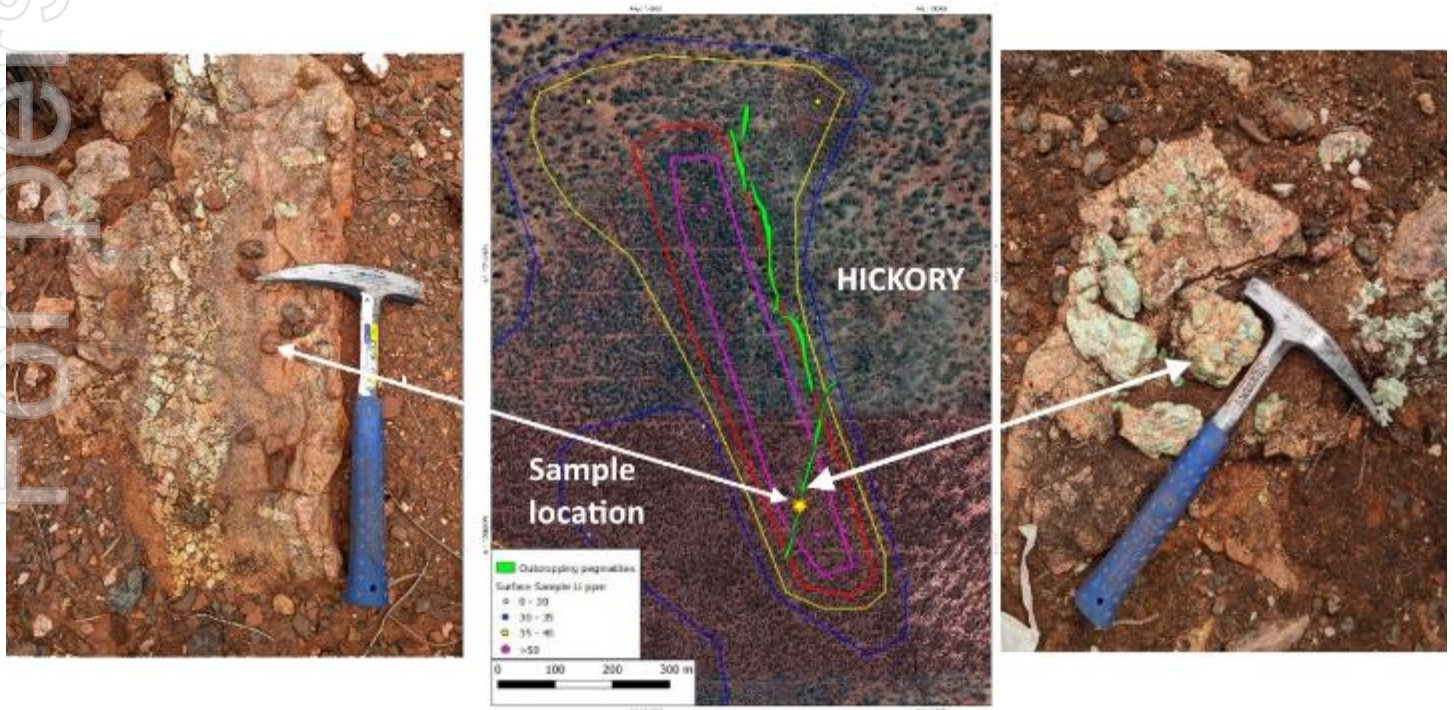


Figure 3: Fractionated granite showing pegmatite and location of samples (assay pending)

### ROE HILLS EXPLORATION (WA ALY 100%)

Roe Hills lies along a distinctive structural trend from the Pegmatite field that hosts the Manna Lithium deposit 5km to the north-east. GSWA mapping has identified a high density of narrow plagioclase dykes, porphyritic dykes and quartz veins mapped adjacent to the granite contact zone.

Multi-element soil sampling conducted by Alchemy in 2018-2020 highlighted multiple areas of low-level lithium anomalism and coincident pathfinder anomalism across a broad strike extent which is shown in Figure 1. Three (3) lower priority target areas have been identified at Roe Hills stretching over an 8-10km strike extent in each zone. Mapped dykes appear to have a parallel north-south strike extent, parallel to the greenstone/granite contact, however most of the area around the known mapped dykes are covered by alluvium and it is likely that these areas are far more extensive than the known outcrops. Soil sampling programs were originally targeting gold mineralisation and as a result, coverage of the prospective areas is limited.

### KARONIE REGIONAL TARGETS (ALY 100%)

Alchemy has recently completed a desktop study and generated additional lithium targets for the broader Karonie regional areas. A total of 15 initial targets with low-medium and high priority were generated based on the analysis of historic drill logs, limited geochemical sampling and GSWA geological maps. The desktop analysis is at an early stage and site visits will be conducted to ground truth the target areas in combination with planning for a large-scale soil sampling campaign. Importantly, the bulk of Alchemy's Karonie tenure sits on the contact zone of the regional granite for over 50km of strike extent that remains largely untested for battery minerals.

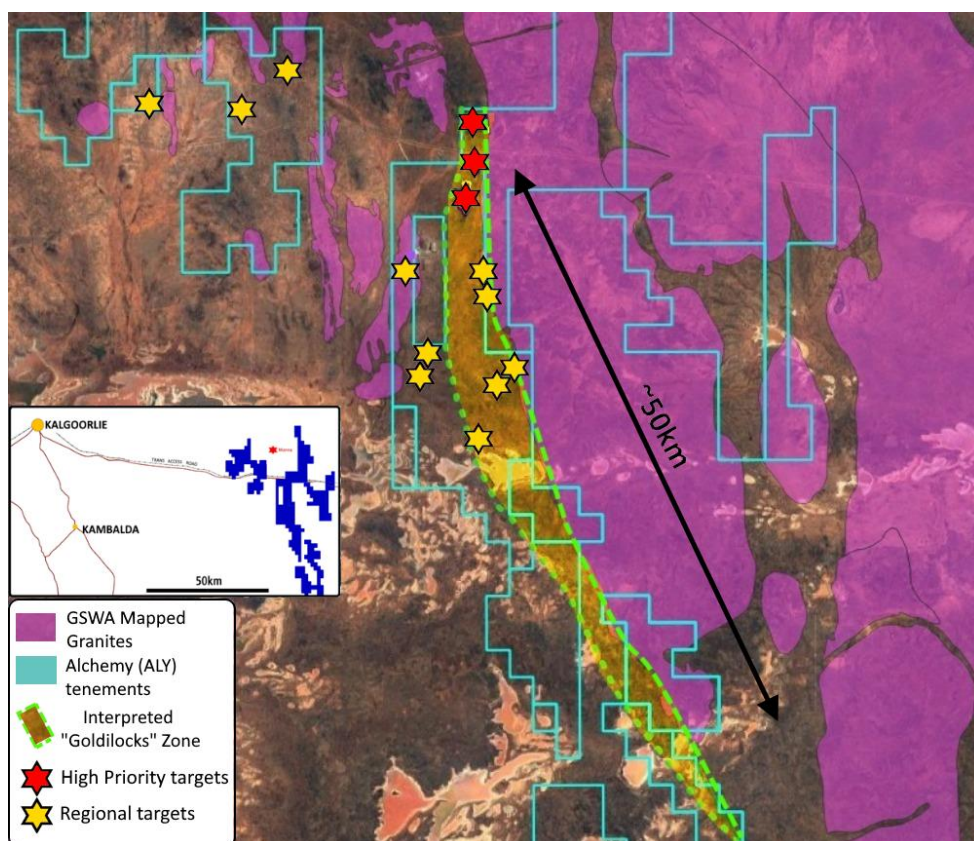


Figure 4: Karonie Regional Lithium targets with GSWA mapped Granites and interpreted "Goldilocks" zone

## NEXT STEPS

- Immediately prioritise infill soil sampling on a 100m x 40m pattern at Cherry and Hickory.
- Commence detailed mapping of pegmatite outcrops along the 7km prospective strike extent at Cherry-Hickory-Mesquite and Pecan anomalies.
- Commence regional soil sampling from KZ5 to Western Brown Prospect (approximately 20km strike extent within the “Goldilocks zone”).
- Complete Heritage agreements to allow for future drill programs.
- Assess broader regional prospectivity at southern Karonie tenements.

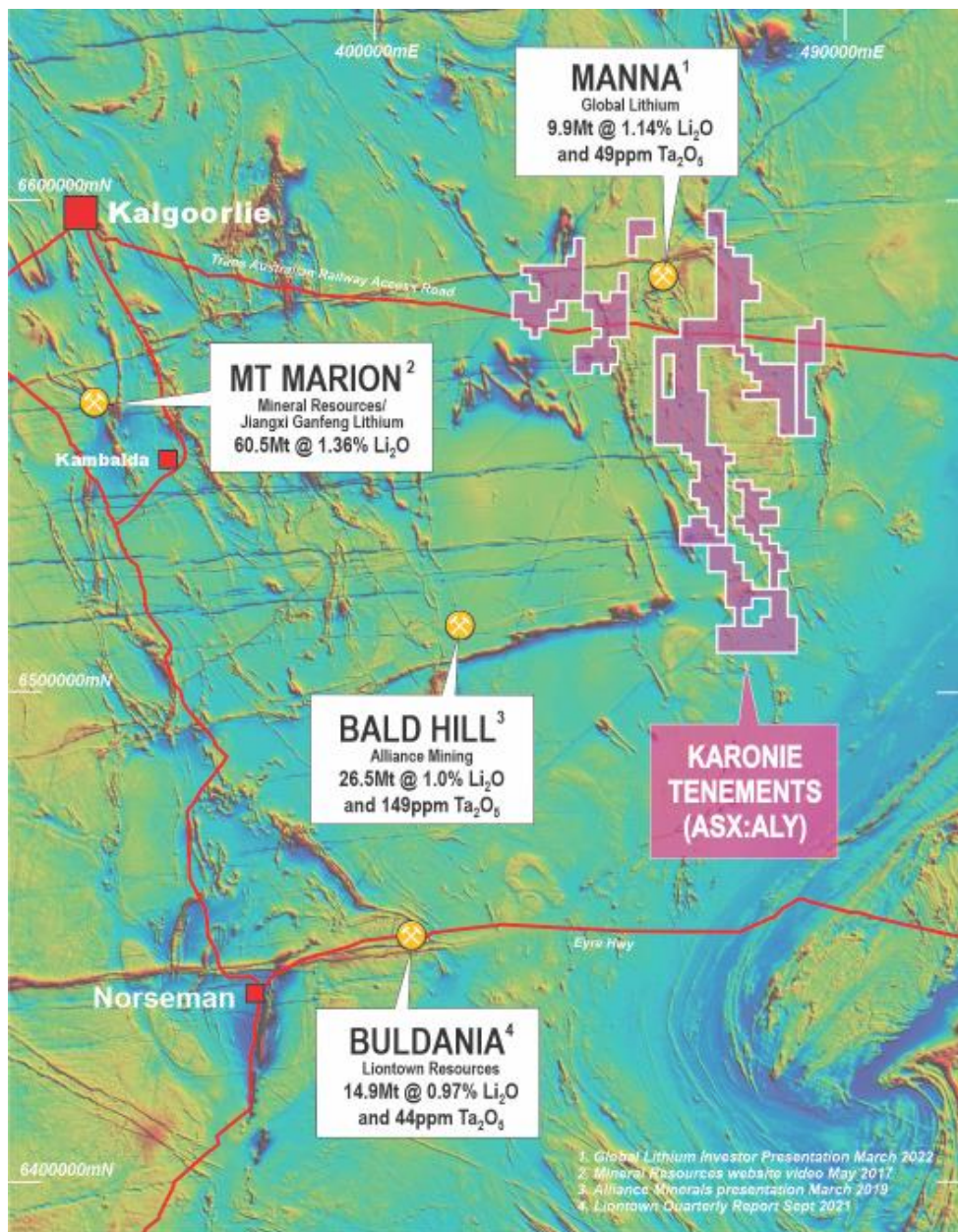


Figure 5: Karonie Projects and nearby Lithium development assets

## ABOUT ALCHEMY RESOURCES

Alchemy Resources Limited (ASX: ALY; “Alchemy” or the “Company”) is an Australian exploration company focused on growth through the discovery and development of gold, base metal, and battery metals within Australia. Alchemy has built a significant land package in the Carosue Dam - Karonie greenstone belt in the Eastern Goldfields region in Western Australia and has an 80% interest in the Lachlan/Cobar Basin Projects in New South Wales (Figure 1). Alchemy also maintains its interest in the Bryah Basin Project in the gold and base metal-rich Gascoyne region of Western Australia, where Superior Gold Inc. (TSX-V: SGI; “Superior”), and Sandfire Resources Limited (ASX: SFR; “Sandfire”) are continuing to advance gold and base metal exploration, respectively.

## COMPETENT PERSON STATEMENT

The information in this report that relates to Exploration Results is based on information compiled by Mr James Wilson, who is the Chief Executive Officer of Alchemy Resources Limited and holds shares and options in the Company. Mr Wilson is a Member of the Australian Institute of Geoscientists and has sufficient experience of relevance to the styles of mineralisation and the types of deposits under consideration, and to the activities undertaken, to qualify as a Competent Person as defined in the 2012 Edition of the Joint Ore Reserves Committee ‘Australasian Code for Reporting of Exploration Results, Mineral Resources and Ore Reserves’ (‘JORC Code 2012’). Mr Wilson consents to the inclusion in this report of the matters based on his information in the form and context in which it appears.

*This announcement has been approved for release by the Board.*

For further information please contact:

James Wilson

Chief Executive Officer

E: [james@alchemyresources.com.au](mailto:james@alchemyresources.com.au)

P: 08 9481-4400

Forward looking statements This announcement contains “forward-looking statements”, including statements about the scheduling of exploration and drilling programs. All statements other than those of historical facts included in this announcement, are forward-looking statements. Forward-looking statements are subject to risks, uncertainties, and other factors, which could cause actual events or results to differ materially from future events or results expressed, projected or implied by such forward-looking statements. The Company does not undertake to release publicly any revisions to any “forward-looking statement” to reflect events or circumstances after the date of this announcement, or to reflect the occurrence of unanticipated events, except as may be required under applicable securities laws.

## APPENDIX A

### JORC Code, 2012 Edition – Table 1

#### Section 1 Sampling Techniques and Data

Criteria	JORC Code explanation	Commentary
Sampling techniques	<p><i>Nature and quality of sampling (e.g. cut channels, random chips, or specific specialised industry standard measurement tools appropriate to the minerals under investigation, such as down hole gamma sondes, or handheld XRF instruments, etc.). These examples should not be taken as limiting the broad meaning of sampling.</i></p> <p><i>Include reference to measures taken to ensure sample representivity and the appropriate calibration of any measurement tools or systems used.</i></p> <p><i>Aspects of the determination of mineralisation that are Material to the Public Report. In cases where 'industry standard' work has been done this would be relatively simple (e.g. 'reverse circulation drilling was used to obtain 1 m samples from which 3 kg was pulverised to produce a 30 g charge for fire assay'). In other cases more explanation may be required, such as where there is coarse gold that has inherent sampling problems. Unusual commodities or mineralisation types (e.g. submarine nodules) may warrant disclosure of detailed information.</i></p>	<p>Karonie soils collected from below the surface organic layer at a depth of approximately 20cm. Soil samples are sieved on site and the ~5mm fraction is retained for geochemical analysis.</p> <p>Karonie Soil sample weights are approximately 300 grams.</p> <p>All sieved material collected is collected in either calico bags or kraft packets (up to 300 grams).</p> <p>The soil sampling techniques utilised for Karonie are considered standard industry practice.</p> <p>The random rock chip samples are irregularly spaced which is considered appropriate for regional scale level lithium and gold exploration.</p>
Drilling techniques	<p><i>Drill type (e.g. core, reverse circulation, open-hole hammer, rotary air blast, auger, Bangka, sonic, etc.) and details (e.g. core diameter, triple or standard tube, depth of diamond tails, face-sampling bit or other type, whether core is oriented and if so, by what method, etc.).</i></p>	No Drilling results reported
Drill sample recovery	<p><i>Method of recording and assessing core and chip sample recoveries and results assessed.</i></p>	No drilling results reported

Criteria	JORC Code explanation	Commentary
	<p><i>Measures taken to maximise sample recovery and ensure representative nature of the samples.</i></p> <p><i>Whether a relationship exists between sample recovery and grade and whether sample bias may have occurred due to preferential loss/gain of fine/coarse material.</i></p>	
Logging	<p><i>Whether core and chip samples have been geologically and geotechnically logged to a level of detail to support appropriate Mineral Resource estimation, mining studies and metallurgical studies.</i></p> <p><i>Whether logging is qualitative or quantitative in nature. Core (or costean, channel, etc.) photography.</i></p> <p><i>The total length and percentage of the relevant intersections logged.</i></p>	<p>Soil sample sites are described noting landform and nature of soil media.</p> <p>Soil sample descriptions are considered qualitative in nature.</p>
Sub-sampling techniques and sample preparation	<p><i>If core, whether cut or sawn and whether quarter, half or all core taken.</i></p> <p><i>If non-core, whether riffled, tube sampled, rotary split, etc. and whether sampled wet or dry.</i></p> <p><i>For all sample types, the nature, quality and appropriateness of the sample preparation technique.</i></p> <p><i>Quality control procedures adopted for all sub-sampling stages to maximise representivity of samples.</i></p> <p><i>Measures taken to ensure that the sampling is representative of the in-situ material collected, including for instance results for field duplicate/second-half sampling.</i></p> <p><i>Whether sample sizes are appropriate to the grain size of the material being sampled.</i></p>	<p>Sample preparation of Alchemy samples follows industry best practice standards at accredited laboratories.</p> <p>Sample preparation comprises oven drying, jaw crushing and pulverising to -75 microns (80% first pass).</p> <p>Karonie Soil samples collected on a 400x400 and 500x500m pattern (in addition to various ad-hoc patterns due to landform irregularities).</p> <p>Sample sizes (0.2kg – 1.5kg) are considered appropriate for the technique.</p> <p>Rock Chip samples were collected in dry conditions and placed in numbered calico bags and grouped in polyweave bags for dispatch to the laboratory.</p> <p>Rock Chip sample sizes were generally 1.5-3.0kg.</p> <p>All rock chip samples have subsequently been delivered to the ALS Laboratory in Kalgoorlie.</p>
Quality of assay data and	<p><i>The nature, quality and appropriateness of the assaying and laboratory procedures</i></p>	<p>Karonie Soil samples submitted to ALS laboratories for 48 elements by four acid digest,</p>



Criteria	JORC Code explanation	Commentary
laboratory tests	<p><i>used and whether the technique is considered partial or total.</i></p> <p><i>For geophysical tools, spectrometers, handheld XRF instruments, etc., the parameters used in determining the analysis including instrument make and model, reading times, calibrations factors applied and their derivation, etc.</i></p> <p><i>Nature of quality control procedures adopted (e.g. standards, blanks, duplicates, external laboratory checks) and whether acceptable levels of accuracy (i.e. lack of bias) and precision have been established.</i></p>	<p>ICP-MS finish (ME-MS61). This technique is considered total for elements assayed.</p> <p>The analytical techniques and quality control protocols used are considered appropriate for the data to be used.</p>
Verification of sampling and assaying	<p><i>The verification of significant intersections by either independent or alternative company personnel.</i></p> <p><i>The use of twinned holes</i></p> <p><i>Documentation of primary data, data entry procedures, data verification, data storage (physical and electronic) protocols.</i></p> <p><i>Discuss any adjustment to assay data.</i></p>	<p>No drilling results reported.</p> <p>Primary soil sampling data was collected electronically.</p> <p>No twinned holes or drilling results are reported.</p> <p>Alchemy Resources engaged a consultant Dr Nigel Brand of Geochemical Services Pty Ltd to compile and analyse the data. Anomalous thresholds were set based on statistical analysis of the data.</p>
Location of data points	<p><i>Accuracy and quality of surveys used to locate drill holes (collar and down-hole surveys), trenches, mine workings and other locations used in Mineral Resource estimation.</i></p> <p><i>Specification of the grid system used.</i></p> <p><i>Quality and adequacy of topographic control.</i></p>	<p>A handheld GPS was used to locate the data positions, with an expected +/-5m vertical and horizontal accuracy.</p> <p>The grid system used for all collar locations is the UTM Geocentric Datum of Australia 1994 (MGA94 Zone 51).</p> <p>GPS measurements of sample positions are sufficiently accurate for first pass geochemical sampling.</p> <p>Nominal RL's were assigned from 1 sec (30m) satellite data.</p>
Data spacing and distribution	<p><i>Data spacing for reporting of Exploration Results.</i></p> <p><i>Whether the data spacing and distribution is sufficient to establish the degree of geological and grade continuity appropriate for the Mineral Resource and</i></p>	<p>Soil sampling line spacing varied between 250m to ~500m within each prospect area, and on these sample spacings vary from ~200m to ~400m.</p> <p>Unknown sample representivity at this early stage of exploration sampling.</p> <p>No compositing undertaken on soil samples.</p>

Criteria	JORC Code explanation	Commentary
	<p><i>Ore Reserve estimation procedure(s) and classifications applied.</i></p> <p><i>Whether sample compositing has been applied.</i></p>	
<p><i>Orientation of data in relation to geological structure</i></p>	<p><i>Whether the orientation of sampling achieves unbiased sampling of possible structures and the extent to which this is known, considering the deposit type</i></p> <p><i>If the relationship between the drilling orientation and the orientation of key mineralised structures is considered to have introduced a sampling bias, this should be assessed and reported if material.</i></p>	<p>The orientation of the soil sampling lines has not considered to have introduced sampling bias.</p> <p>No compositing undertaken on soil samples.</p>
<p><i>Sample security</i></p>	<p><i>The measures taken to ensure sample security.</i></p>	<p>Samples are collected in polyweave bags and delivered directly from site to the assay laboratory in Kalgoorlie by Alchemy employees.</p>
<p><i>Audits or reviews</i></p>	<p><i>The results of any audits or reviews of sampling techniques and data.</i></p>	<p>No review has been carried out to date.</p>

## APPENDIX B

### Section 2 Reporting of Exploration Results

Criteria	JORC Code explanation	Commentary
<i>Mineral tenement and land tenure status</i>	<p><i>Type, reference name/number, location and ownership including agreements or material issues with third parties such as joint ventures, partnerships, overriding royalties, native title interests, historical sites, wilderness or national park and environmental settings.</i></p> <p><i>The security of the tenure held at the time of reporting along with any known impediments to obtaining a licence to operate in the area.</i></p>	<p>Type - Exploration Licence (currently in good standing)</p> <p>Reference name –Karonie &amp; Roe Hills</p> <p>Reference number – E28/2575, E28/2880, E28/2681, E28/2667, E28/2976</p> <p>Location – 100km east of Kalgoorlie, Australia.</p> <p>Ownership – 100% Goldtribe Corporation Pty Ltd (a wholly owned subsidiary of Alchemy Resources Limited)</p> <p>Overriding royalties - none</p> <p>The land is 100% freehold.</p> <p>No Wilderness Reserves, National Parks, Native Title sites or registered historical sites are known.</p> <p>No environmental issues are known.</p>
<i>Exploration done by other parties</i>	<i>Acknowledgment and appraisal of exploration by other parties.</i>	<p>A significant amount of exploration has been conducted across the majority of E28/2575, E28/2880, E28/2681, E28/2667, E28/2976. Previous exploration companies include Freeport McMoran Ltd, Poseidon Gold Ltd, WMC, Goldfields Pty Ltd, Integra Mining Ltd, Border Gold, and Silver Lake Resources.</p> <p>Exploration work completed across the area covered by E28/2575, E28/2880, E28/2681, E28/2667, E28/2976 has included desktop studies and collaborative research, geological and regolith mapping, soil sampling, RAB, Aircore, RC and diamond drilling, and numerous airborne and ground geophysical surveys (magnetics, gravity, IP, surface EM and downhole EM).</p>
<i>Geology</i>	<i>Deposit type, geological setting and style of mineralisation</i>	<p>Deposit Type (gold)– Structurally controlled, shear zone and dolerite hosted mesothermal gold mineralisation.</p> <p>Geological setting – Proterozoic Woodline Formation overlying variably folded Archean</p>

For personal use only

Criteria	JORC Code explanation	Commentary
		<p>and sheared sediments and mafic volcanic units. Multiple deformation events leading to complex faulting and metamorphism ranging from greenschist to amphibolite facies.</p> <p>Style of mineralisation – quartz vein hosted gold mineralisation within steep west dipping shear zones. Better grades and tonnages are associated with isoclinally folded (or otherwise thickened) coarser grained mafic units (dolerites). Gold mineralisation is associated with strong silicification-carbonate-biotite + calc-silicate alteration and observed steep north plunging fold axes and lineation’s correlate with steep north plunging high grade ore shoots.</p> <p>Deposit Type (lithium) – The company is also targeting lithium-caesium-tantalum mineralisation hosted by granitic pegmatites. The company undertook large scale exploration in 2018-2020 focussing on gold exploration. There is no record of exploration for lithium exploration within the project areas. Areas of interest sit within the prospective “Goldilocks Zone”, a defined corridor in which Lithium-Caesium-Tantalum pegmatite occur. The zone lies outboard of the granitic terrain and within the greenstone belts.</p>
<p><i>Drill hole Information</i></p>	<p><i>A summary of all information material to the understanding of the exploration results including a tabulation of the following information for all Material drill holes:</i></p> <ul style="list-style-type: none"> <li>○ <i>easting and northing of the drill hole collar</i></li> <li>○ <i>elevation or RL (Reduced Level – elevation above sea level in metres) of the drill hole collar</i></li> <li>○ <i>dip and azimuth of the hole</i></li> <li>○ <i>down hole length and interception depth</i></li> <li>○ <i>hole length.</i></li> </ul>	<p>No drillholes are reported.</p>

Criteria	JORC Code explanation	Commentary
	<i>If the exclusion of this information is justified on the basis that the information is not Material and this exclusion does not detract from the understanding of the report, the Competent Person should clearly explain why this is the case.</i>	
<i>Data aggregation methods</i>	<p><i>In reporting Exploration Results, weighting averaging techniques, maximum and/or minimum grade truncations (eg cutting of high grades) and cut-off grades are usually Material and should be stated.</i></p> <p><i>Where aggregate intercepts incorporate short lengths of high-grade results and longer lengths of low-grade results, the procedure used for such aggregation should be stated and some typical examples of such aggregations should be shown in detail.</i></p> <p><i>The assumptions used for any reporting of metal equivalent values should be clearly stated.</i></p>	No levelling of the raw geochemical data was undertaken. Images of the individual elements were generated using IOGas software and proprietary analysis via the geochemical consultant.
<i>Relationship between mineralisation widths and intercept lengths</i>	<p><i>These relationships are particularly important in the reporting of Exploration Results.</i></p> <p><i>If the geometry of the mineralisation with respect to the drill hole angle is known, its nature should be reported.</i></p> <p><i>If it is not known and only the down hole lengths are reported, there should be a clear statement to this effect (e.g. 'down hole length, true width not known').</i></p>	Not applicable.
<i>Diagrams</i>	<i>Appropriate maps and sections (with scales) and tabulations of intercepts should be included for any significant discovery being reported These should include, but not be limited to a plan view of drill hole collar locations and appropriate sectional views.</i>	Appropriate plans and have been included in the body of this announcement.
<i>Balanced reporting</i>	<i>Where comprehensive reporting of all Exploration Results is not practicable, representative reporting of both low and</i>	Not applicable.

Criteria	JORC Code explanation	Commentary
	<i>high grades and/or widths should be practiced avoiding misleading reporting of Exploration Results.</i>	
<i>Other substantive exploration data</i>	<i>Other exploration data, if meaningful and material, should be reported including (but not limited to): geological observations; geophysical survey results; geochemical survey results; bulk samples – size and method of treatment; metallurgical test results; bulk density, groundwater, geotechnical and rock characteristics; potential deleterious or contaminating substances.</i>	All meaningful data and relevant information have been included in the body of the report.
<i>Further work</i>	<i>The nature and scale of planned further work (eg tests for lateral extensions or depth extensions or large-scale step-out drilling).  Diagrams clearly highlighting the areas of possible extensions, including the main geological interpretations and future drilling areas, provided this information is not commercially sensitive.</i>	Appropriate plans are provided in the body of the report.