

ASX RELEASE

13 DECEMBER 2021

SHALLOW HIGH GRADE COPPER INTERSECTED IN MCB-036

HIGHLIGHTS

- New section of shallow high grade copper intersected from diamond drill hole MCB-036
- Total intersection of 670.7m @ 0.43% copper and 0.12g/t gold from 19m down hole.
- Including internal shallow higher grade intervals of:
 - 122.2m @ 0.92% copper and 0.24g/t gold from 26.5m and,
 - 13m @ 3.69% copper and 0.39g/t gold from 89m
- Copper mineralization starts at surface and is now confirmed to extend to depths of over 700m below surface.
- New shallow higher grade sections of copper-gold mineralization to be followed up in a modified extension to the drilling program at MCB.

Celsius Resources Limited (“Celsius” or “the Company”) is pleased to announce its Philippine subsidiary Makilala Mining Company, Inc. (“MMCI”) has received high-grade copper-gold assay results from the Company’s third drill hole, which was recently completed at the MCB Copper-Gold Project, located on the island of Luzon in the Philippines.

Hole MCB-036 has identified a previously unrecognized shallow high grade zone within the MCB deposit. The drill hole was targeted to test the depth extent of the deposit and confirmed the presence of copper mineralization to over 700m below the surface, highlighting further the scale of the porphyry copper mineralization at MCB.

“We have had to persevere with this drill hole due to both COVID related and technical difficulties on site. However, the resulting discovery of previously unrecognized shallow high grade copper has delivered an opportunity to further enhance the future studies at MCB.”

“We have now modified the next set of drill holes to focus effort around this additional shallow high grade copper-gold mineralization as it will clearly have a positive impact on potential future production options as we move from the Scoping Study into the next phase of Trade-Off Studies”, said Celsius’ Chairman Martin Buckingham.

MCB COPPER-GOLD PROJECT

The MCB Copper-Gold Project (MCB) is located in the Cordillera Administrative Region in the Philippines, approximately 320 kilometers north of Manila (Figure 1). It is the flagship project within the Makilala portfolio which also contains other key prospects in the pipeline for permit renewal/extension.

A maiden JORC compliant Mineral Resource Estimate was declared for the MCB Project in January 2021, comprising 313.8 million tonnes @ 0.48% copper and 0.15 g/t gold, for 1.5 million tonnes of contained copper and 1.47 million ounces of gold, of which 290.3 million tonnes @ 0.48% copper and 0.15 g/t gold is classified as Indicated and 23.5 million tonnes @ 0.48% copper and 0.10 g/t gold is classified as Inferred.

A Scoping Study for the MCB Project was announced by CLA on 1 December 2021, which identified the potential for the development of a copper-gold operation with a 25 year mine life. The scoping study was based on an underground mining operation and processing facility to produce a saleable copper-gold concentrate.

Highlights from the Scoping study include a Post tax NPV ^(8%) of US\$464m and IRR of 35%, assuming a copper price of US\$4.00/lb and gold price of US\$1,695/oz. Initial capital expenditure is estimated to be US\$253m with a payback period of approximately 2.7 years. The mine production is matched to a 2.28Mtpa processing plant which will treat ore with an estimated average grade of 1.14% copper and 0.54g/t gold for the first 10 years of operation with a C1 cash costs at just US\$0.73/lb copper, net of gold credits



Figure 1: Location of the MCB Project in the province of Kalinga, Northern Luzon, Philippines.

RESULTS FROM MCB-036

Results from the third drill hole, MCB-036 (subject of this announcement) identified copper mineralisation as shallow as 19m down hole, extending down to 691m. The interpreted envelope of the copper mineralisation is broadly in line with the surrounding historical drilling information and typically defined by a lower cut-off grade of approximately 0.2% Cu.

There are a number of higher-grade intervals, including a well-defined high-grade core, which is above a cut off grade of approximately 0.5% copper. The significant intersections based on the assay results received from MCB-036 are detailed in Table 1.

Table 1: Significant intersections from drill hole MCB-036.

Hole ID	East	North	RL	Dip	Azi	Total Depth	Depth From	Depth To	Length (m)	Cu (%)	Au (g/t)
MCB-036	294,034	1,918,630	875	60	350	860.2	19	691	672	0.43	0.12
						<i>incl.</i>	26.5	150	123.5	0.92	0.24
						<i>incl.</i>	89	102	13	3.69	0.39

UPDATED DRILLING WORK PROGRAM

The recent results from the MCB Scoping Study identified stronger returns associated with the higher grade sections of the Mineral Resource at shallow levels, which could be accessed early in the proposed mining schedule. The drilling results from MCB-036 has highlighted the potential for further sections of higher grade copper mineralisation which could enhance the value of the MCB project as the Company moves to advance trade off Studies for MCB moving towards the submission of a Declaration of Mining Project Feasibility (“DMPF”).

As a result, the drilling program has been modified to focus on the possible extensions to the shallow high grade copper positions. A total of five drill holes have been planned from a central drill collar position to test these potential drilling positions with the first of these drill holes commencing in January 2022.

Additional Geotechnical and Hydrogeology drilling works will also commence next year to support the application of the DMPF and future studies as the project proceeds through the various development and approval phases.

For personal use only

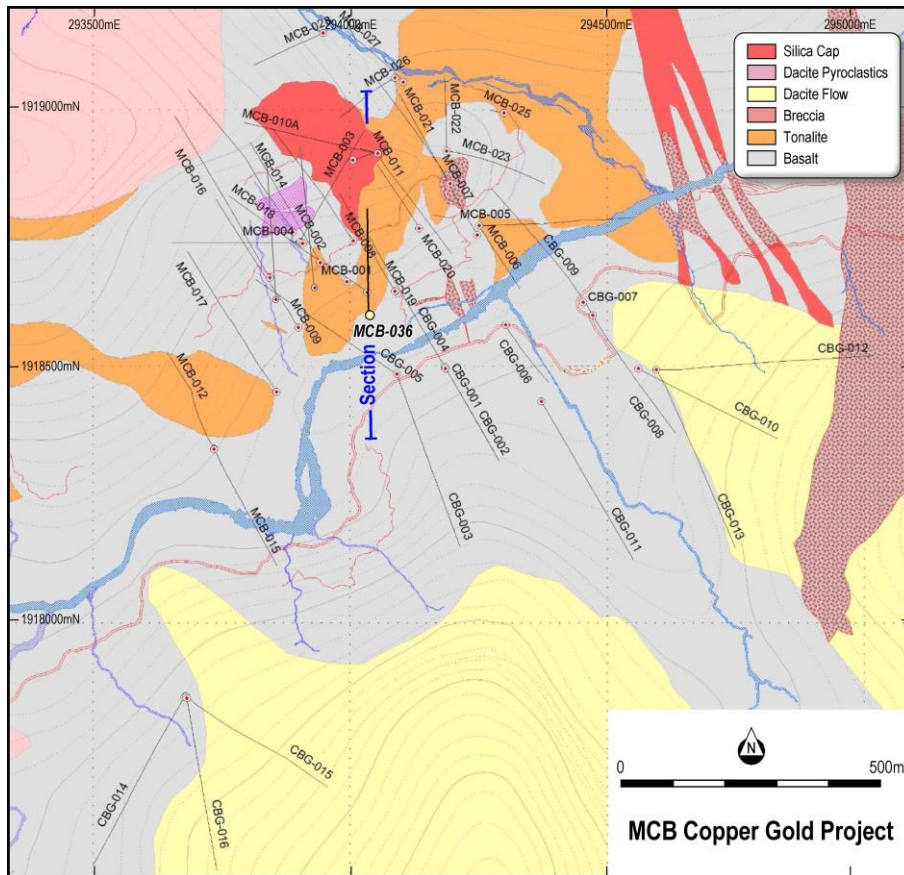


Figure 1. Plan view of Drill Hole MCB-036 relative to recent and historical drilling at MCB.

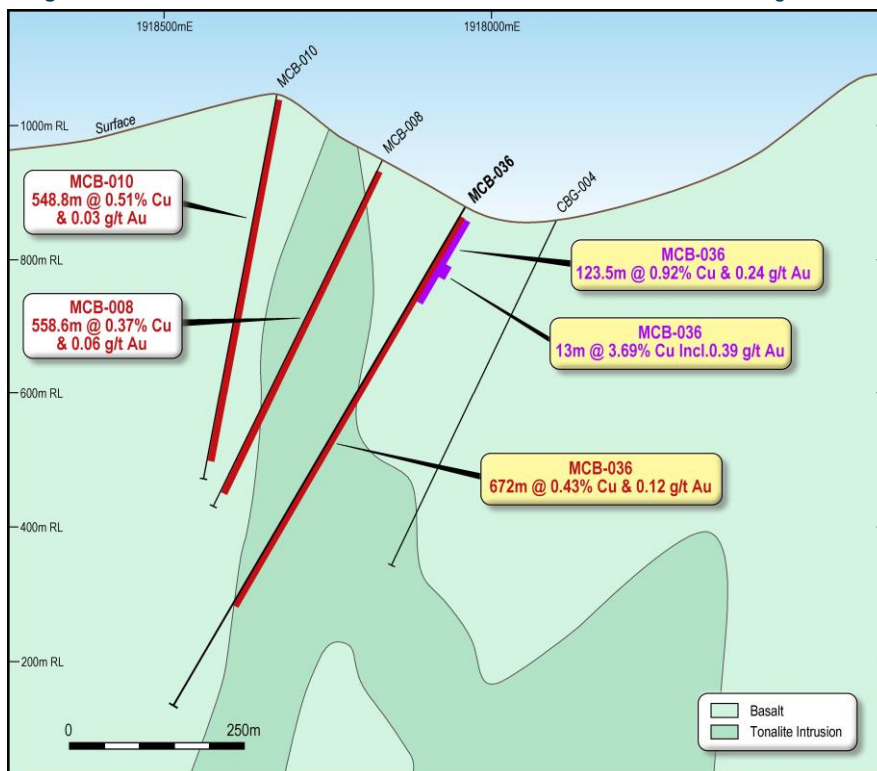


Figure 2. Cross section of drill hole MCB-036 relative to the interpreted geology and significant assay results.

STAKEHOLDER ENGAGEMENTS

Outcomes of the Scoping Study were initially presented during the regular meetings with the Balatoc Council of Elders, the Barangay Council including the provincial National Commission on Indigenous Peoples (NCIP) and the regional Mines and Geosciences Bureau (MGB). Further presentations will be carried out with the Provincial and Local Government Units of Kalinga and Pasil, respectively.

The meetings provided an avenue for the Company to address or respond to relevant concerns, issues, and/or fears that stakeholders have in relation to the MCB project moving forward. Support was also solicited regarding how to help relative to helping the project accelerate the Company's future work programs. Feedback was positive and appreciative of the company's commitment to transparency and openness. The community is happy that aside from the economic opportunities the project will bring about, the Company has ensured that environmental considerations are factored into the preliminary mine design and that environmental protection and enhancement programs will continue alongside mine development and operations.



Image 1. MCB Project Team led by Peter D. Hume, Country Operations Director, during the presentation to the Mines and Geosciences Bureau- Cordillera Administrative Region (MGB-CAR) headed by Dir. Fay W. Apil

The MGB-CAR (Cordillera Administrative Region) Region recognized the company's efforts to make significant progress with the MCB Project at such a short period of time despite the challenges amidst the COVID19 pandemic. In recognizing the significant delays that were incurred to the drilling program due to restrictions, the MGB-CAR Regional Director announced during the meeting, that the exploration permit for MCB Project has been granted a further 6 months extension. A formal advice regarding the permit extension was received thereafter.

Community Development Program

The MCB community development program continues to deliver positive outcomes with the recent completion and turn-over of 1 Unit Multipurpose Room to the Batong Buhay National Highschool. This will serve as the new office for the local highschool teachers and thus, pave the way for the previous office to serve as classroom for the first batch of Grade 12 students from Brgy. Balatoc in time for the anticipated opening of the face-to-face learning next year. Prior to this project, local residents attend Grade 12 classes in the nearby town which is more than an hour away from Brgy. Balatoc. Local residents, teachers and parents have expressed their gratitude as this reduces travel time and cost for the students.



Image 2. Alex Madera, MCB Site Project Manager (2nd from Left), Peter D. Hume, MMCI Country Operations Director (middle), Jerry Ymson, Assistant Schools Division Superintendent (3rd from left), Atty Catherine Apaling, NCIP Provincial Officer (2nd from right) and along with other DepEd and school representatives during the turn-over of Batong Buhay National Highschool Multipurpose Room.



Image 3. Delia Bringas, MMCI Community Relations Officer (leftmost), during the turn-over of desktop computers and projector to the Municipal Council Office of Pasil.

Computer desktops (3 units) and projector (1 unit) equipment were also provided to the Municipal Council of Pasil to assist with their legislative functions and their aim to continuously improve productivity and efficiency in the delivery of their mandate.

Building supplies, furniture and fixtures were also distributed to a number of local religious groups in the community by providing supplies and materials for the improvement of church facilities which includes tiles, cement, chairs, fans, roofing materials and others. This is in response to their request to assist in improving their church facilities in order to improve church attendance and promote lasting peace and harmony in the community.



Image 4. Supplies and materials provided by MMCI to local church groups in Brgy, Balatoc, Pasil, Kalinga.

Environmental Management Program



Image 5. Delivery of Bengue Pine Tree seedlings by MMCI prior to planting at the NGP Site in Kalinga Province.

Rehabilitation of drill sites at MCB 033 and MCB 034 have been completed while MCB-036 is currently ongoing. Environmental Baseline Studies are in their final stage for completion. Outcomes of the studies will inform both the Environmental Impact Assessment (EIS) permitting process the DMPF permitting process.

Tree planting activities in support of the National Greening Program were also carried out to support the government's aim of promoting reforestation, climate change mitigation and adaptation.

This announcement has been authorised by the Board of Directors of Celsius Resources Limited.

Celsius Resources Contact Information

Level 2, 22 Mount Street
Perth WA 6000

PO Box 7054
Cloisters Square Perth WA 6850

P: +61 8 6188 8181

F: +61 8 6188 8182

E: info@celsiusresources.com.au

W: www.celsiusresources.com.au

Media contact

David Tasker / Colin Jacoby

Chapter One Advisors

M: +61 433 112 936 / +61 439 980 359

E: dtasker@chapteroneadvisors.com.au / cjacoby@chapteroneadvisors.com.au

Competent Persons Statement

Information in this report relating to Exploration Results is based on information compiled, reviewed and assessed by Mr. Steven Olsen, who is a Member of the Australasian Institute of Mining and Metallurgy and the Australian Institute of Geoscientists. Mr. Olsen is a consultant to Celsius Resources and has sufficient experience which is relevant to the style of mineralisation and type of deposit under consideration and to the activity which he is undertaking to qualify as a Competent Person as defined by the 2012 Edition of the Australasian Code for reporting of Exploration Results, Mineral Resources and Ore Reserves. Mr. Olsen consents to the inclusion of the data in the form and context in which it appears.

Listing Rule 5.23 Disclosure

The Company confirms that it is not aware of any new information or data that relates to Exploration Results and Mineral Resources at the MCB Project and that all material assumptions and technical parameters underpinning the Mineral Resource continue to apply. The Company notes that, as disclosed in this announcement and in previous announcements, a drilling programme is currently underway at the MCB Project the results of which will be incorporated into an updated Mineral Resource in the future and that the current Scoping Study may provide new assumptions and parameters for use in that Mineral Resource.

Appendix 1: The following tables are provided to ensure compliance with the JORC Code (2012) requirements for the reporting of Exploration Results for the MCB Project

SECTION 1: Sampling Techniques and Data

(Criteria in this section apply to all succeeding sections.)

Criteria	JORC Code explanation	Commentary
Sampling techniques	<ul style="list-style-type: none"> Nature and quality of sampling (eg cut channels, random chips, or specific specialised industry standard measurement tools appropriate to the minerals under investigation, such as down hole gamma sondes, or handheld XRF instruments, etc). These examples should not be taken as limiting the broad meaning of sampling. Include reference to measures taken to ensure sample representivity and the appropriate calibration of any measurement tools or systems used. Aspects of the determination of mineralisation that are Material to the Public Report. In cases where 'industry standard' work has been done this would be relatively simple (eg 'reverse circulation drilling was used to obtain 1 m samples from which 3 kg was pulverised to produce a 30 g charge for fire assay'). In other cases more explanation may be required, such as where there is coarse gold that has inherent sampling problems. Unusual commodities or mineralisation types (eg submarine nodules) may warrant disclosure of detailed information. 	<ul style="list-style-type: none"> Samples were collected from diamond core drilled from the surface. All drill core was generally sampled on 2-meter intervals. In cases where geological and mineralogical characteristics change, sample length was not less than 1 meter. Core samples cut into half using diamond core saw following the cutting lines marked by the Geologist. Split cores returned to its respective core tray. Samples were shipped by company vehicle to Intertek Testing Services which is an external laboratory located in Manila, Philippines. Crushed samples were fire assayed for gold (Au) using a 30-gram charge, with a detection limit of 0.005 ppm. Gold values greater than 50 ppm were determined by gravimetric fire assay. Copper (Cu) values were assayed using Four acid digestion. Elements determined by AAS finish with final reporting for a total of 36 elements.
Drilling techniques	<ul style="list-style-type: none"> Drill type (eg core, reverse circulation, open-hole hammer, rotary air blast, auger, Bangka, sonic, etc) and details (eg core diameter, triple or standard tube, depth of diamond tails, face-sampling bit or other type, whether core is oriented and if so, by what method, etc). 	<ul style="list-style-type: none"> Diamond drilling was used to capture the rock samples, with the following drill core size summarized as follows: <ul style="list-style-type: none"> PQ sized drill core with a core diameter of 83.1 mm was drilled for a total length of 81m, HQ sized drill core with a core diameter of 61.1mm was drilled for a total length of 378.3m, and; NQ sized drill core with a core diameter of 45.1 mm, was drilled for a total length of 400.9m.

Criteria	JORC Code explanation	Commentary
Drill sample recovery	<ul style="list-style-type: none"> Method of recording and assessing core and chip sample recoveries and results assessed. Measures taken to maximise sample recovery and ensure representative nature of the samples. Whether a relationship exists between sample recovery and grade and whether sample bias may have occurred due to preferential loss/gain of fine/coarse material. 	<ul style="list-style-type: none"> Core recovery has been recorded for every interval as part of the routine geomechanical logging. Recovered core lengths on average were measured to be over 95% for the total length of the drill hole, indicating a high recovery and minimal lost core. All drilling activities were supervised by company Geologists. Trained Core house Technician were responsible for the core recovery determination. Core was arranged to fit the breakages, before the actual core length from the start to the end of the drill run was measured. Percent recovery was calculated from dividing the measured core length over the total drill run multiplied by 100. There were only a few minor positions where an interpreted structure resulted in a core recovery of less than 80%.
Logging	<ul style="list-style-type: none"> Whether core and chip samples have been geologically and geotechnically logged to a level of detail to support appropriate Mineral Resource estimation, mining studies and metallurgical studies. Whether logging is qualitative or quantitative in nature. Core (or costean, channel, etc) photography. The total length and percentage of the relevant intersections logged. 	<ul style="list-style-type: none"> Geologists were tasked to oversee the daily quick log report down to sampling. Daily quick log form was completed to identify the geological details such as lithology, alteration and mineralisation with corresponding percentage estimate of Cu minerals and Cu grade, using an established geological codes. Detailed logging proceeds describing geological characteristics present in the core, i.e. lithology, alteration, mineralogy, structures, etc. Core photography was undertaken after completing the geomechanical logging.
Sub-sampling techniques and sample preparation	<ul style="list-style-type: none"> If core, whether cut or sawn and whether quarter, half or all core taken. If non-core, whether riffled, tube sampled, rotary split, etc and whether sampled wet or dry. For all sample types, the nature, quality and appropriateness of the sample preparation technique. Quality control procedures adopted for all sub-sampling stages to maximise representivity of samples. Measures taken to ensure that the sampling is representative of the in situ material collected, including for instance results for field duplicate/second-half sampling. Whether sample sizes are appropriate to the grain size of the material being sampled. 	<ul style="list-style-type: none"> Samples were routinely taken over a 2m interval, and cut in half, with half of the drill core sent for analysis and half of the drill core retained for future reference. Samples were cut on site using a hand core saw. Samples were then selected and bagged on site prior to delivery to the laboratory (Intertek) in Manila for sample preparation. The sample size is considered appropriate for type of material being samples.

Criteria	JORC Code explanation	Commentary
Quality of assay data and laboratory tests	<ul style="list-style-type: none"> • The nature, quality and appropriateness of the assaying and laboratory procedures used and whether the technique is considered partial or total. • For geophysical tools, spectrometers, handheld XRF instruments, etc, the parameters used in determining the analysis including instrument make and model, reading times, calibrations factors applied and their derivation, etc. • Nature of quality control procedures adopted (eg standards, blanks, duplicates, external laboratory checks) and whether acceptable levels of accuracy (ie lack of bias) and precision have been established. 	<ul style="list-style-type: none"> • Samples were fire assayed for gold (Au) using a 30-gram charge, with a detection limit of 0.005 ppm. Gold values greater than 50 ppm were determined by gravimetric fire assay. Copper (Cu) values were assayed using four acid digestion. Elements determined by AAS finish • The procedures for the submission of samples to the laboratory also include the regular insertion of QA/QC samples in every transmittal form or batch, which was typically delivered to the laboratory in batches of 50 numbered samples. For each batch of 50 samples a total of 43 came from core samples and an additional 7 samples were included for QA/QC checks, which were as follows: <ul style="list-style-type: none"> • Four referenced standards • One referenced Blank • One coarse (unrecognisable) blank • One field duplicate taken from the quartered core • After sample preparation, all samples were sent for final analysis to Intertek at their laboratory in Manila. Intertek is an internationally recognised and ISO/IEC 17025:2005 & ISO/IEC 17020:2004 certified independent laboratory.
Verification of sampling and assaying	<ul style="list-style-type: none"> • The verification of significant intersections by either independent or alternative company personnel. • The use of twinned holes. • Documentation of primary data, data entry procedures, data verification, data storage (physical and electronic) protocols. • Discuss any adjustment to assay data. 	<ul style="list-style-type: none"> • Analytical procedures provided by an internationally certified laboratory is considered in line with industry standard for the type of deposit and mineralisation identified at the Property. • Apart from the verification of the procedures and results as described above, no further verification of the sampling and assaying have been undertaken. • None of the drill holes in this report are twinned.

For personal use only

Criteria	JORC Code explanation	Commentary
Location of data points	<ul style="list-style-type: none"> Accuracy and quality of surveys used to locate drill holes (collar and down-hole surveys), trenches, mine workings and other locations used in Mineral Resource estimation. Specification of the grid system used. Quality and adequacy of topographic control. 	<ul style="list-style-type: none"> All data reference points and maps for the Makilala database, including drill hole collar co-ordinates are recorded in WGS 84/UTM Zone 51N. Compass measurements taken by Geologists were used to establish the dip and azimuth of the collar hole as part of their initial collar surveys. Drill collar locations were positioned using a handheld Garmin GPS unit, set to UTM WGS 84 Zone 51N coordinate reference system, with an accuracy expected to be within 2 metres. Downhole surveys were also completed using a Keeper Gyro at 50m intervals down to a depth of 600m. Collar surveys were then logged into the master MS Excel spreadsheet as part of the database.
Data spacing and distribution	<ul style="list-style-type: none"> Data spacing for reporting of Exploration Results. Whether the data spacing and distribution is sufficient to establish the degree of geological and grade continuity appropriate for the Mineral Resource and Ore Reserve estimation procedure(s) and classifications applied. Whether sample compositing has been applied. 	<ul style="list-style-type: none"> The broad drilling pattern is at 100m spacing for a series of drill holes which are oriented in a north-west direction and dipping at predominantly at 60 degrees. These drill holes are augmented by some drill holes which have a west-north-west orientation or a north-east orientation or are vertical. (see figure 1 Drill Hole Locations). Drill holes at the MCB deposit are distributed broadly on eight grid lines, giving coverage of 1,000 metres from east to west. The drill hole spacing where significant copper-gold mineralisation has been identified is sufficient to determine the geology and grade continuity of the area, as well as the ore body and mineralisation extents.
Orientation of data in relation to geological structure	<ul style="list-style-type: none"> Whether the orientation of sampling achieves unbiased sampling of possible structures and the extent to which this is known, considering the deposit type. If the relationship between the drilling orientation and the orientation of key mineralised structures is considered to have introduced a sampling bias, this should be assessed and reported if material. 	<ul style="list-style-type: none"> In the resource estimation, drill hole assays were composited to 2 metres downhole intervals. The dominant trend of the tonalite intrusion, which is directly related to the copper-gold mineralisation has an overall strike of 50 degrees and a near to vertical dip. Drill hole MCB-036, was drilled at a steep angle to intersect the possible extensions at depth and is predominantly at a 40 to 50 degree angle to the interpreted trend of the copper-gold mineralisation. There are a number of vertical drill holes which are not optimal for assessing the geological contacts or grade distribution, however, in most cases these drill holes are also close to other drill holes which are dipping across the mineralised domains, typically at 60 degrees.
Sample security	<ul style="list-style-type: none"> The measures taken to ensure sample security. 	<ul style="list-style-type: none"> The following standard procedures were enforced for the drilling of MCB-036. Sample bags are arranged in sequence according to its sample number. These are then weighed and jotted down to a sample dispatch note which details the sample numbers, sample type and laboratory processing required. Geologists ensures that the transmittal form is correct for encoding and submission. The bags of samples are sent directly to the Intertek Laboratory in Manila by company

		<p>vehicle. No unsupervised third parties were given access prior to the chain of custody procedure.</p> <ul style="list-style-type: none"> • Samples were delivered to Intertek Testing Services along with two copies of the sample dispatch form. One copy for the laboratory to accept custody of the sample, and the signed/received copy return to database custodian at the Core House facility in Tabuk, Kalinga.
Audits or reviews	<ul style="list-style-type: none"> • The results of any audits or reviews of sampling techniques and data. 	<ul style="list-style-type: none"> • No other specific audit or review was conducted other than the validation checks by the author documented earlier with regard to the sample preparation, analysis or security for the information in the MCB-036.

For personal use only

SECTION 2:

Reporting of Exploration Results

(Criteria listed in the preceding section also apply to this section.)

Criteria	JORC Code explanation	Commentary
Mineral tenement and land tenure status	<ul style="list-style-type: none"> Type, reference name/number, location and ownership including agreements or material issues with third parties such as joint ventures, partnerships, overriding royalties, native title interests, historical sites, wilderness or national park and environmental settings. The security of the tenure held at the time of reporting along with any known impediments to obtaining a licence to operate in the area. 	<ul style="list-style-type: none"> The Maalinao-Caigutan-Biyog (MCB) Copper-Gold project is situated in Luzon Central Cordillera in the Barangay of Balatoc, Municipality of Pasil, province of Kalinga. The property comprises a single Exploration Tenement (EP-003-2006-CAR) which covers an area of approximately 2,719 hectares. The Exploration Tenement surrounds the previous Copper-Gold mining operations known as Batong Buhay Gold Mines, Inc. The underlying title is in the name of the Philippines registered corporation Makilala Mining Company Inc.(MMCI) which is 100% owned by Makilala Holdings Ltd. Celsius Resources Ltd has acquired 100% of Makilala Holdings upon the issuance of the extension to carry out exploration of the Tenement (EP-003-2006-CAR) from the Mines and Geosciences Bureau (MGB) of the Philippines this requirement was met in 24th November 2020
Exploration done by other parties	<ul style="list-style-type: none"> Acknowledgment and appraisal of exploration by other parties. 	<ul style="list-style-type: none"> Exploration work and drilling was completed by Makilala Mining Company Inc. which was previously a subsidiary of Freeport-McMoran Exploration Corporation-Philippine Branch from year 2006 to 2013, the details of which have been documented in the JORC tables. The relative quality and detail associated with the drilling information is considered to be of a high standard. This has enabled the author to establish a high level of confidence associated with the historical drilling information.

Criteria	JORC Code explanation	Commentary
Geology	<ul style="list-style-type: none"> • Deposit type, geological setting and style of mineralisation. 	<ul style="list-style-type: none"> • The geological setting for the MCB copper-gold mineralisation is typical of a porphyry copper + gold + moly deposit as commonly defined in many academic papers (Hedenquist and Lowernstern, 1994; Sillitoe, R. H., 2010. Corbett and Leach, 1997). The mineralisation and associated alteration exist across the contact between the genetically related intrusive body (tonalite) and the surrounding host rock material. In most cases the surrounding host rock is a mafic volcanic, however, in some instances the older (not genetically related to copper-gold mineralisation) intrusive bodies also exists in contact with the younger intrusive resulting in broad sections of mineralisation and alteration within a series of intrusive bodies. • There is also evidence at MCB for epithermal vein deposit types which exist within close proximity to the large-scale porphyry copper-gold mineralisation. At this stage only the deposit type that is identified from the drilling information for MCB is a porphyry copper-gold style. • Basalt lava flows make up the majority of the host rocks in the tenement area, which is part of the oldest exposed unit, Basement Complex. This Cretaceous-Paleogene Metavolcanics has been intruded by quartz diorite complex, which in Kalinga, ranges in composition from gabbro to tonalite. • A later stage Tonalite intrusion exists throughout the project area and is interpreted to be genetically related to the copper-gold mineralisation at MCB deposit. • A dacite flow and dacitic pyroclastic blankets the older basalt host rock and tonalitic intrusive rocks. • There are four types of ore mineralisation that were emphasized in the project: <ul style="list-style-type: none"> ○ Type 1 - Early high-grade porphyry Cu-Au mineralisation, hosted both in tonalite and basalt. ○ Type 2 - Mix of high-grade porphyry Cu-Au (Type 1) and high-sulphidation mineralisation (Type 4). Hosted in basalt and tonalites, but with strong Type 1 mineralisation that was partially overprinted by ore Type 4. ○ Type 3 - Medium grade porphyry-copper ○ Type 4 - High-sulphidation epithermal mineralisation • (See figure 2 for a representative Cross Section of the Geology and its relationship to the copper-gold mineralisation at the MCB Deposit).
Drill hole Information	<ul style="list-style-type: none"> • A summary of all information material to the understanding of the exploration results including a tabulation of the following information for all Material drill holes: 	<ul style="list-style-type: none"> • See table 1 for all details pertaining to drill hole MCB-036 which is the subject of this release. • In summary, with the inclusion of the drill hole reported in this announcement, the drill hole database for the Property consists of 49 diamond core drilled holes with an accumulative meterage of 27,755.75.

For personal use only

	<ul style="list-style-type: none"> • easting and northing of the drill hole collar • elevation or RL (Reduced Level – elevation above sea level in metres) of the drill hole collar • dip and azimuth of the hole • down hole length and interception depth • hole length. • If the exclusion of this information is justified on the basis that the information is not Material and this exclusion does not detract from the understanding of the report, the Competent Person should clearly explain why this is the case. 	<ul style="list-style-type: none"> • See CLA announcement dated 16 September 2020 for details regarding the historical drill hole information completed at the MCB Property which relate to the interpretations associated with drill hole MCB-036.
<p>Data aggregation methods</p>	<ul style="list-style-type: none"> • In reporting Exploration Results, weighting averaging techniques, maximum and/or minimum grade truncations (eg cutting of high grades) and cut-off grades are usually Material and should be stated. • Where aggregate intercepts incorporate short lengths of high grade results and longer lengths of low grade results, the procedure used for such aggregation should be stated and some typical examples of such aggregations should be shown in detail. • The assumptions used for any reporting of metal equivalent values should be clearly stated. 	<ul style="list-style-type: none"> • Significant intersections are reported in Table 1 and are aggregated relative to broad mineralised interval which correspond with a definable and continuous zone of copper-gold mineralisation, nominally above a grade of 0.2% copper. The intervals have been reported as weighted average totals. Internal to the broader mineralisation that has been reported, there are some internal higher-grade copper-gold assay results reported (nominally above 0.5% copper) which are interpreted to exist as a continuous domain of higher-grade copper-gold mineralisation. These sections have also been reported as weighted average totals. • Only individual weighted average assay results have been reported and no metal equivalent values have been reported.

Criteria	JORC Code explanation	Commentary
Relationship between mineralisation on widths and intercept lengths	<ul style="list-style-type: none"> • These relationships are particularly important in the reporting of Exploration Results. • If the geometry of the mineralisation with respect to the drill hole angle is known, its nature should be reported. • If it is not known and only the down hole lengths are reported, there should be a clear statement to this effect (eg 'down hole length, true width not known'). 	<ul style="list-style-type: none"> • The general orientation for the copper-gold mineralisation is striking at 50 degrees at a close to vertical dip. Drill hole MCB-036 was drilled at approximately 350 degrees and rotated towards 346 degrees for the majority of the drill hole. • Based on the geometry of the mineralisation relative to drill hole MCB-036, the true width of the copper-gold mineralisation is approximately 66% of the down hole interval reported for the drill hole.
Diagrams	<ul style="list-style-type: none"> • Appropriate maps and sections (with scales) and tabulations of intercepts should be included for any significant discovery being reported. These should include, but not be limited to a plan view of drill hole collar locations and appropriate sectional views. 	<ul style="list-style-type: none"> • See figure 2 for a representative Cross Section of the Geology and its relationship to the copper-gold mineralisation at MCB Tenement for drill hole MCB-036.
Balanced reporting	<ul style="list-style-type: none"> • Where comprehensive reporting of all Exploration Results is not practicable, representative reporting of both low and high grades and/or widths should be practiced to avoid misleading reporting of Exploration Results. 	<ul style="list-style-type: none"> • All data for the project has been collected, validated and reported and is considered to be a fair representation of the Exploration Results from drill hole MCB-036, which is the subject of this release.
Other substantive exploration data	<ul style="list-style-type: none"> • Other exploration data, if meaningful and material, should be reported including (but not limited to): geological observations; geophysical survey results; geochemical survey results; bulk samples – size and method of treatment; metallurgical test results; bulk density, groundwater, geotechnical and rock characteristics; potential deleterious or contaminating substances. 	<ul style="list-style-type: none"> • Historical exploration since the date of the original grant of EP-003-2006-CAR in 2006 was undertaken under the ownership and management of Makilala Mining Company Inc. Exploration work conducted by Makilala Mining Company Inc include surface mapping and sampling (2007), ground magnetic survey (2007), induced polarisation (IP) geophysical surveys (2010), and an extended period of diamond drilling from 2006 through to 2013 for a total of 46 diamond drill holes.
Further work	<ul style="list-style-type: none"> • The nature and scale of planned further work (eg tests for lateral extensions or depth 	<ul style="list-style-type: none"> • There are a few locations where the potential extension to the current Minerals Resource could be tested. These locations are initially defined at depth plunging steeply to the west underneath the high-grade copper-gold mineralisation,

	<p>extensions or large-scale step-out drilling).</p> <ul style="list-style-type: none"> • Diagrams clearly highlighting the areas of possible extensions, including the main geological interpretations and future drilling areas, provided this information is not commercially sensitive. 	<p>and also to the west of the Maalinao-Panyaw fault. The location for the possible high grade copper-gold to the west include at depth, due to the interpretation that the fault has downthrown the geology on its western side, or toward the north-west, as a possible trend exists to the mineralisation in this direction which has not been tested.</p> <ul style="list-style-type: none"> • Apart from the direct extensions to the currently defined copper-gold mineralisation, there is considerable scope for further discoveries of two defined deposit types at the MCB Tenement. • Porphyry copper-gold deposit types <ul style="list-style-type: none"> ○ There are extensive intrusions in the area that are directly relate to the copper-gold mineralisation and which could at multiple locations formed significant high-grade copper-gold deposits. • Epithermal vein hosted deposit types <ul style="list-style-type: none"> ○ It is considered likely that there could be a combination of narrow high grade, and/or more broad large scale and lower grade epithermal deposit types that are closely related to the porphyry copper-gold deposits at MCB.
--	--	--

For personal use only