

ersonal use only

# LOCKSLEY RESOURCES LIMITED

ACN 629 627 144

**November 2021**  
PRESENTATION

# Disclaimer

## For Consideration

This presentation has been prepared by Locksley Resources Limited ("Locksley Resources"). This document contains background information about Locksley Resources current at the date of this presentation. The presentation is in summary form and does not purport to be all inclusive or complete. Recipients should conduct their own investigations and perform their own analysis in order to satisfy themselves as to the accuracy and completeness of the information, statements and opinions contained in this presentation.

This presentation is not an offer, invitation, solicitation or other recommendation with respect to the subscription for, purchase or sale of any securities in the Locksley Resources. This presentation has been made available for information purposes only and does not constitute a prospectus, short form prospectus, profile statement or offer information statement nor does it constitute investment or financial product advice (nor taxation, accounting or legal advice) and it is not intended to be used as the basis for making an investment decision.

This presentation does not constitute investment advice and has been prepared without taking into account the recipient's investment objectives, financial circumstances or particular needs. The opinions and recommendations in this presentation are not intended to represent recommendations of particular investments to particular persons. Recipients should seek professional advice when deciding if an investment is appropriate. All securities involve risks which include (among others) the risk of adverse or unanticipated market, financial or political developments. To the fullest extent permitted by law, Locksley Resources Limited, its officers, employees, agents and advisors do not make any representation or warranty, express or implied, as to the currency, accuracy, reliability or completeness of any information, statements, opinions, estimates, forecasts or other representations contained in this presentation. No responsibility for any errors or omissions from this presentation arising out of negligence or otherwise are accepted.

## Forward-Looking Statements

This presentation may include forward-looking statements. Forward-looking statements are only predictions and are subject to risks, uncertainties and assumptions which are outside the control of Locksley Resources. Actual values, results or events may be materially different to those expressed or implied in this presentation. Given these uncertainties, recipients are cautioned not to place reliance on forward looking statements. Any forward looking statements in this presentation speak only at the date of issue of this presentation. Subject to any continuing obligations under applicable law, Locksley Resources does not undertake any obligation to update or revise any information or any of the forward looking statements in this presentation or any changes in events, conditions, or circumstances on which any such forward looking statement is based. The proposed business and operational plans and use of funds and their relative priority is subject to ongoing review and evaluation by the Company and is dependent upon the availability of funds; infrastructure and personnel; government approvals; agreements with traditional and other land holders; co-operation of third party suppliers and contractors as well as weather and other seasonal factors. As with any business plans and budgets, the actual use of funds, plans and timing of events may change depending on the outcome of the programs as they proceed. The Board will evaluate its plans on an ongoing basis considering the various relevant factors and reserves the rights to alter the way in which funds are applied, timing of events and the overall business and operational plans themselves. No warranty as to the accuracy of the above information is given and investors should rely upon their own due diligence when making an investment.

An investment in Locksley Resources Limited must be considered as speculative.

# Disclaimer

## Forward-Looking Statements

This document may include forward-looking statements. Forward-looking statements include, but are not limited to, statements concerning the Company's planned exploration program and other statements that are not historical facts. When used in this document, the words such as "could," "plan," "expect," "intend," "may", "potential," "should," "further" and similar expressions are forward-looking statements. Although the Company believes that its expectations reflected in these forward-looking statements are reasonable, such statements involve risks and uncertainties and no assurance can be given that further exploration will result in additional Mineral Resources.

## Competent Persons Statement

The information in this report related to Exploration Results is based on information compiled by Ian Cooper BSc(Hons) BE(Mining) MSc, a Competent Person who is a Member of The Australasian Institute of Mining and Metallurgy, (member No. 106609). Mr Cooper has over 35 years' experience in the mineral and mining industry. Mr Cooper is a full-time employee and shareholder of Locksley Resources. Mr Cooper has sufficient experience that is relevant to the style of mineralisation and type of deposit under consideration and to the activity being undertaken to qualify as a Competent Person as defined in the 2012 Edition of the 'Australasian Code for Reporting of Exploration Results, Mineral Resources and Ore Reserves. Mr Cooper consents to the inclusion in the presentation of the matters based on his information in the form and context in which it appears.

The Competent Person for the Exploration Target is Mr Jeremy Peters FAusIMM CP(Geo, Min) a Director of Burnt Shirt Pty Ltd, who has sufficient experience and qualifications to postulate such targets. Mr Peters cautions that an Exploration Target is a statement or estimate of the exploration potential of a mineral deposit in a defined geological setting where there has been insufficient exploration to estimate a Mineral Resource, that the potential quantity and grade is conceptual in nature and that it is uncertain if further exploration will result in the estimation of a Mineral Resource.

## Previous Disclosure

The information in this presentation that relates to Exploration Results has been extracted from Locksley Resources' prospectus dated 18 May 2021 and its ASX announcements titled "RC Drilling Commences at the Tottenham Copper Project & Exploration Update" released on 30 September 2021 and "Grant of EL9307 Exploration Update" released on 25 October 2021, all of which are available at [locksleyresources.com.au](http://locksleyresources.com.au). Locksley Resources confirms that it is not aware of any new information or data that materially affects the information included in these original market announcements and that all material assumptions and technical parameters underpinning the relevant market announcements continue to apply and have not materially changed. Locksley Resources confirms that the form and context in which the Competent Person's findings are represented have not been materially modified from the original market announcements.

The Board of Directors of Locksley Resources Limited authorises the release of this presentation.

# Executive Summary

Project is in the highly prospective Lachlan Fold Belt Cobar-Girilambone district...

## Overview

- Australian exploration company with the purposes of identifying and assessing resource opportunities within Australia
- Focused on the exploration and development of the mineral resources project at Tottenham NSW
- Highly prospective Lachlan Fold Belt Tottenham district and includes a 50 km strike length of Volcanic Hosted Massive Sulphide (VHMS) copper corridor
- **Numerous historic mines**

## Historic Production

- Previous production was the Bogan River, Mount Royal – Orange Plains, Carolina and Ace. The most active period of production was between 1905 and 1917. After 1917 production continued at a lower level until 1930.
- **Copper production is estimated to be 3907 tonnes** with minor gold (4.5kg) and silver (24.1kg).



# Mount Royal

Mount Royal Mine circa 1918.  
Note copper ingots in right foreground.

ersonal use only



# What We've Delivered in Just 6 Months...

ersonal use only



**Successful ASX Listing**  
Strongly over subscribed



**Numerous geophysical targets identified**  
Following a geophysics review, a number of new targets identified for drilling.



**Significant focus on reprocessing Historic data**  
9,000 meters of historic core on site. 2,500 meters of historic core in government archive.



**Property Purchases / Establishment of Field Base**  
Purchase of freehold land encompassing Orange Plains resource, camp site and core processing facility.



**1563.9m Diamond Drilling at Orange Plains and Carolina Deposits**  
August – September 2021



**3398m RC Drilling at Chris Watson and Orange Plains Deposits**  
October 2021



**Imminent JORC Compliant Resource**  
Current exploration target to be converted to JORC compliant resource.

# Diamond Drilling

TOD001



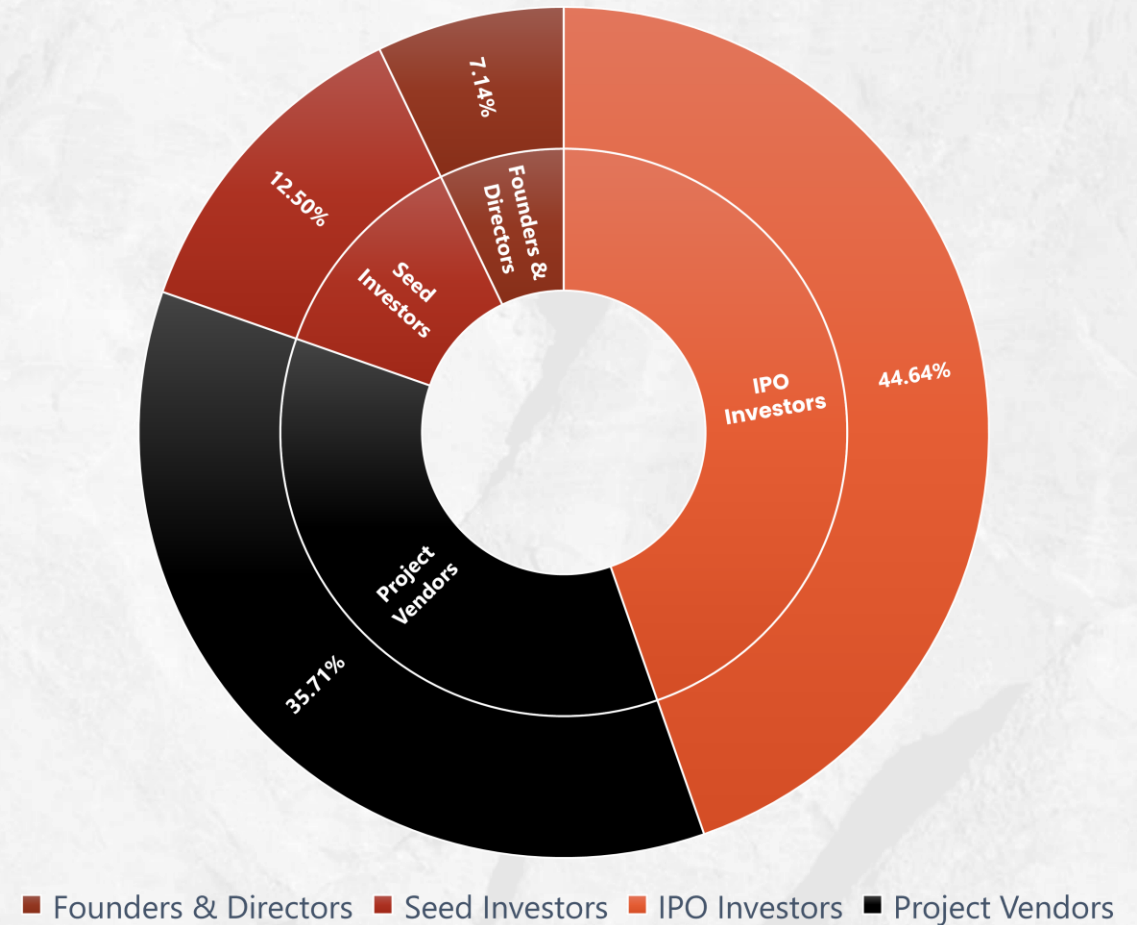
ersonal use only

# Corporate Overview

ASX Code	LKY
Shares in Issue	56,000,001
Options in Issue	9,000,000
<b>Market Capitalisation ( \$0.19 )</b>	<b>\$10,6m</b>
Cash at Bank (30 Sep 2021)	\$4.104m
Freehold Property Ownership	\$100,000
Enterprise Value (30 Sep 2021)	\$6.4m

## Shareholder Breakdown

(July 2021)





# Tottenham Project

## Overview

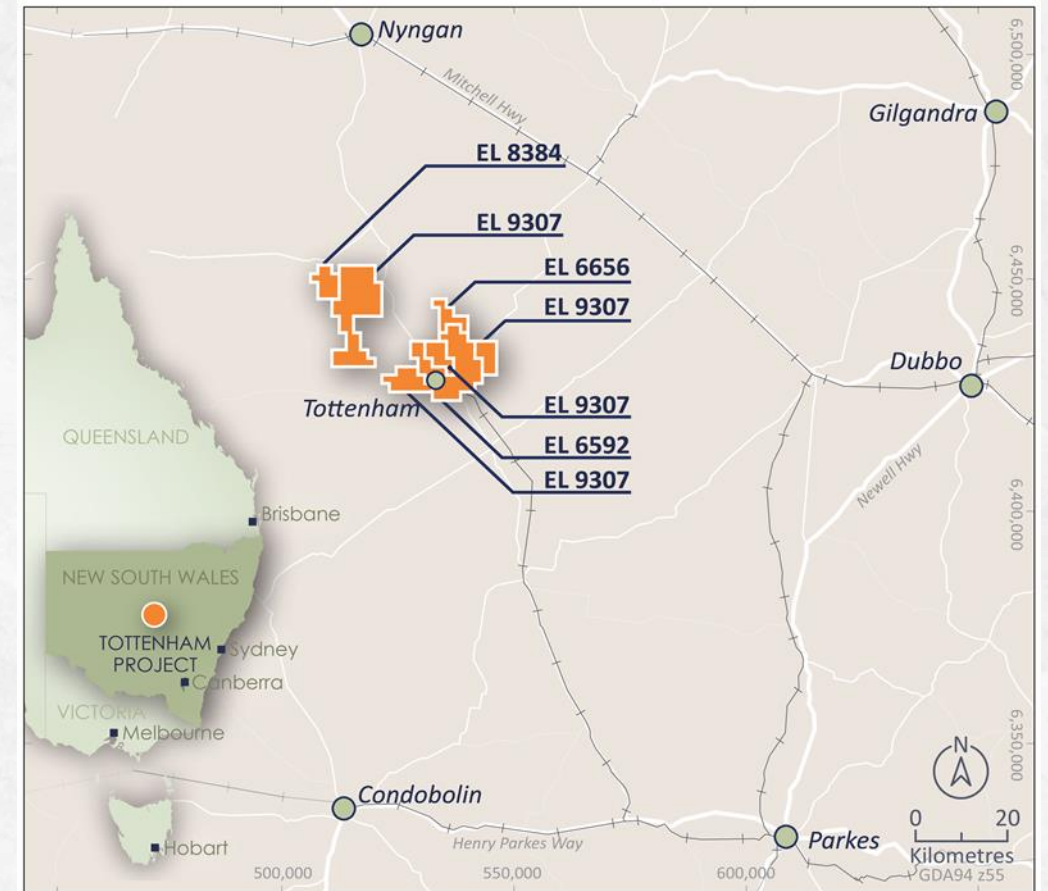
- Australian mineral exploration company
- Focused on the exploration and development of Copper & Gold Deposits
- Located in the highly prospective Lachlan Fold Belt, NSW
- **Multiple Known Deposits**

## 4 Granted Exploration Licenses

- 470km<sup>2</sup> Land Package
- **All tenements granted until 2026**

## Exploration Targets

- Two targets at the Mount Royal – Orange Plains and Carolina Deposits
- **7Mt @2% Cu, 1.0g/t Au to 14Mt @ 1.2% Cu, 0.5g/t Au.**



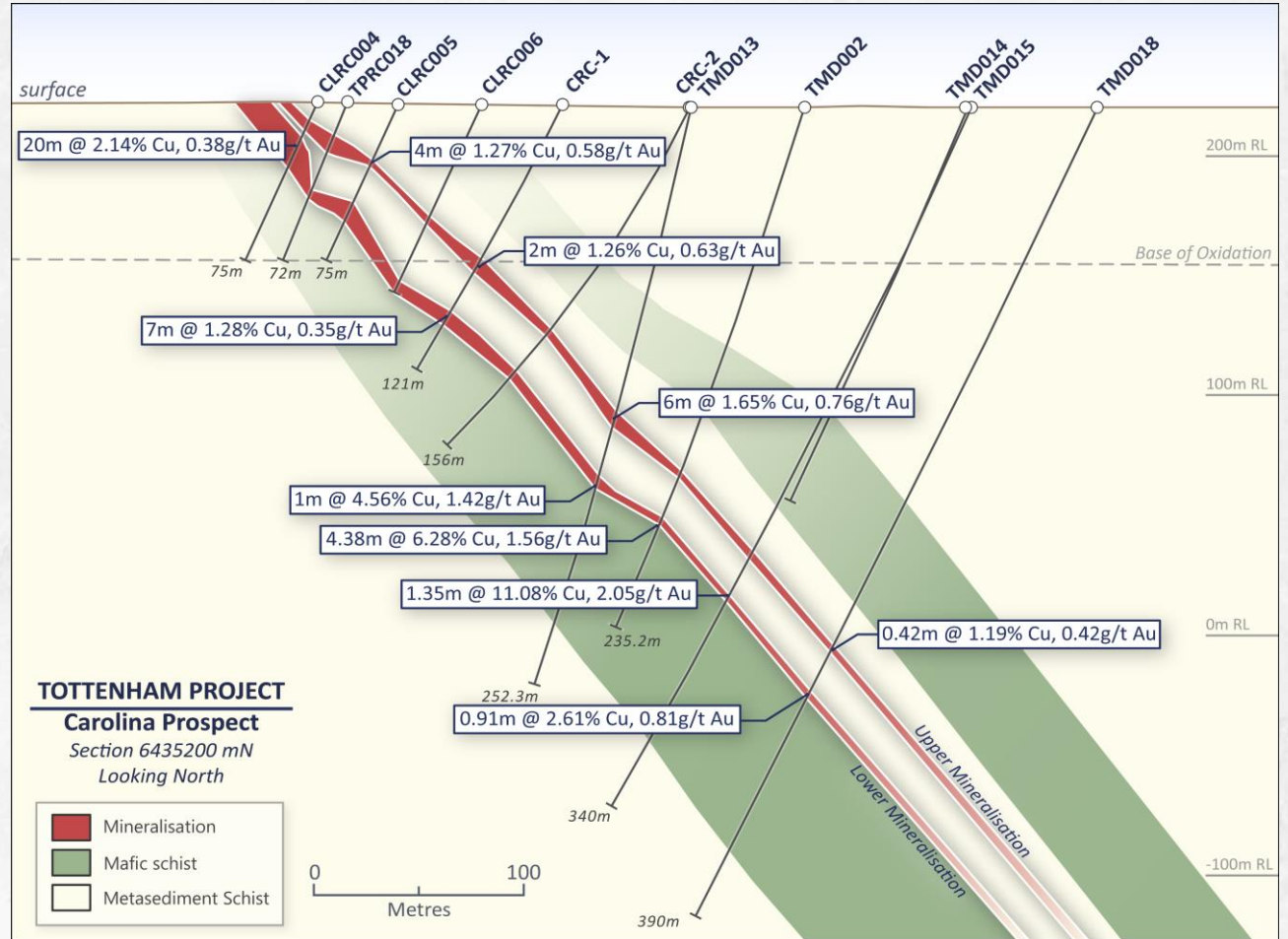
Tottenham Project Location

The Competent Person for this Exploration Target is Mr Jeremy Peters FAusIMM CP(Geo, Min) a Director of Burnt Shirt, who has sufficient experience and qualifications to postulate such targets. Mr Peters cautions that an Exploration Target is a statement or estimate of the exploration potential of a mineral deposit in a defined geological setting where there has been insufficient exploration to estimate a Mineral Resource, that the potential quantity and grade is conceptual in nature and that it is uncertain if further exploration will result in the estimation of a Mineral Resource.

# Carolina Deposit

Carolina is the most consistently mineralised deposit, with an Exploration Target of;

3.4Mt at 1.5% Cu, 0.5 g/t Au for 52Kt Cu and 59Koz Au.

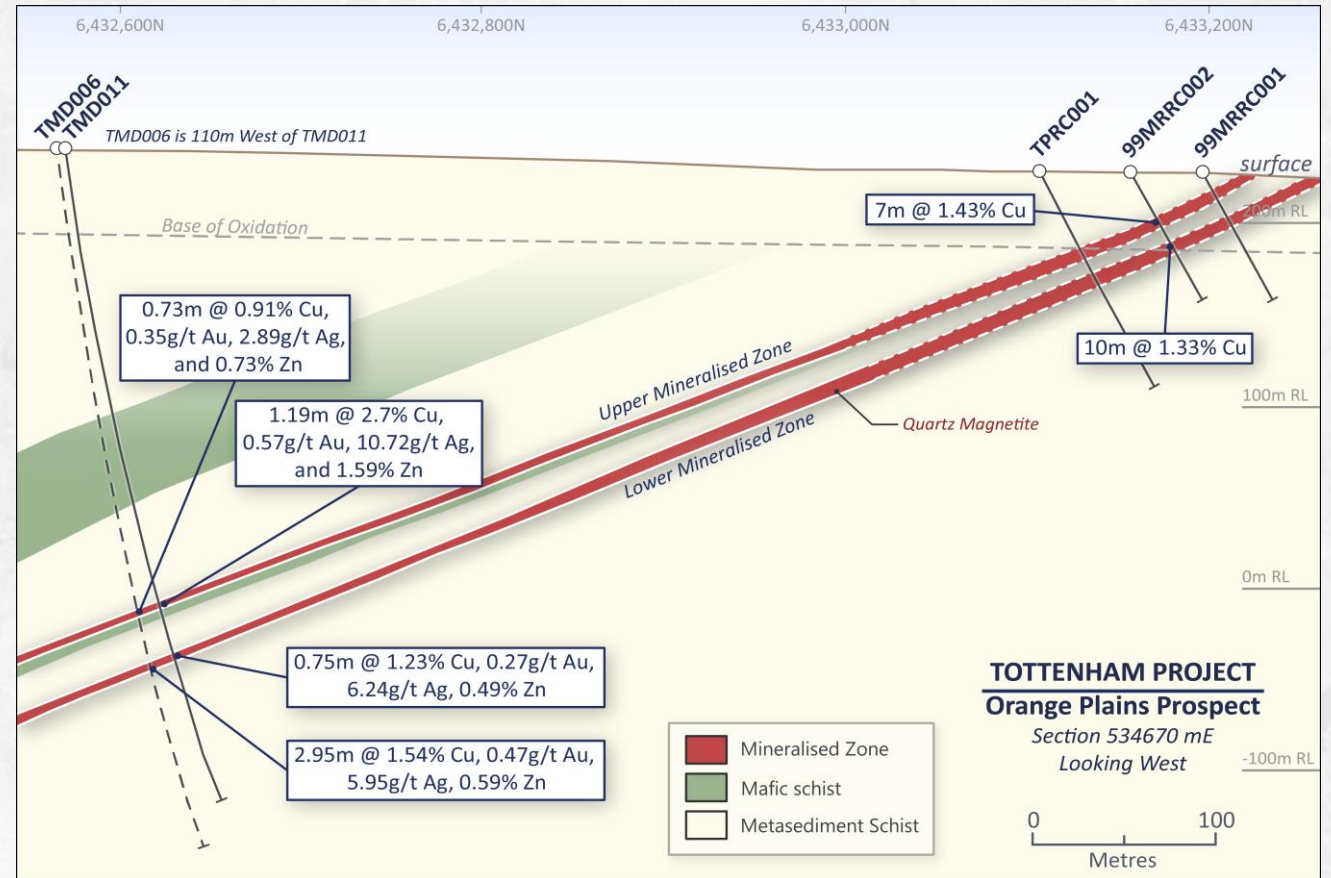


ersonal use only

# Mount Royal - Orange Plains Deposit

Mineralisation occurs in two horizons with significant exploration potential;

Exploration Target  
3.9Mt at 0.9% Cu, 0.3g/t Au for  
34kt Cu and 30k oz Au.



ersonal use only

# Tottenham's Growth Strategy

## Organic Growth



**Significant exploration potential Carolina and Mt Royal remain open at depth**



### Multiple Exploration Targets

Bogan River  
Underlay  
Ace  
Jimmy Woodser



### Multiple Geophysics Anomalies

Ace  
Underlay  
Burdenda



Carolina Mine 1890's

## Potential Inorganic Growth



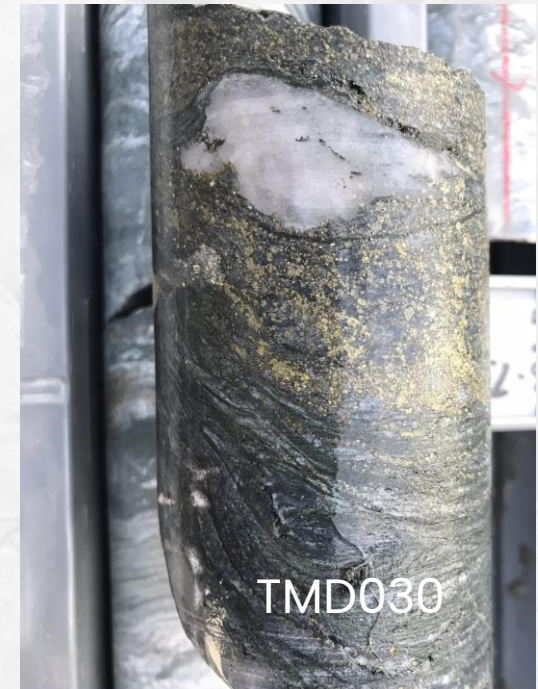
**Land Acquisitions**



**Project Acquisitions**



**Global Copper supply deficit looming**

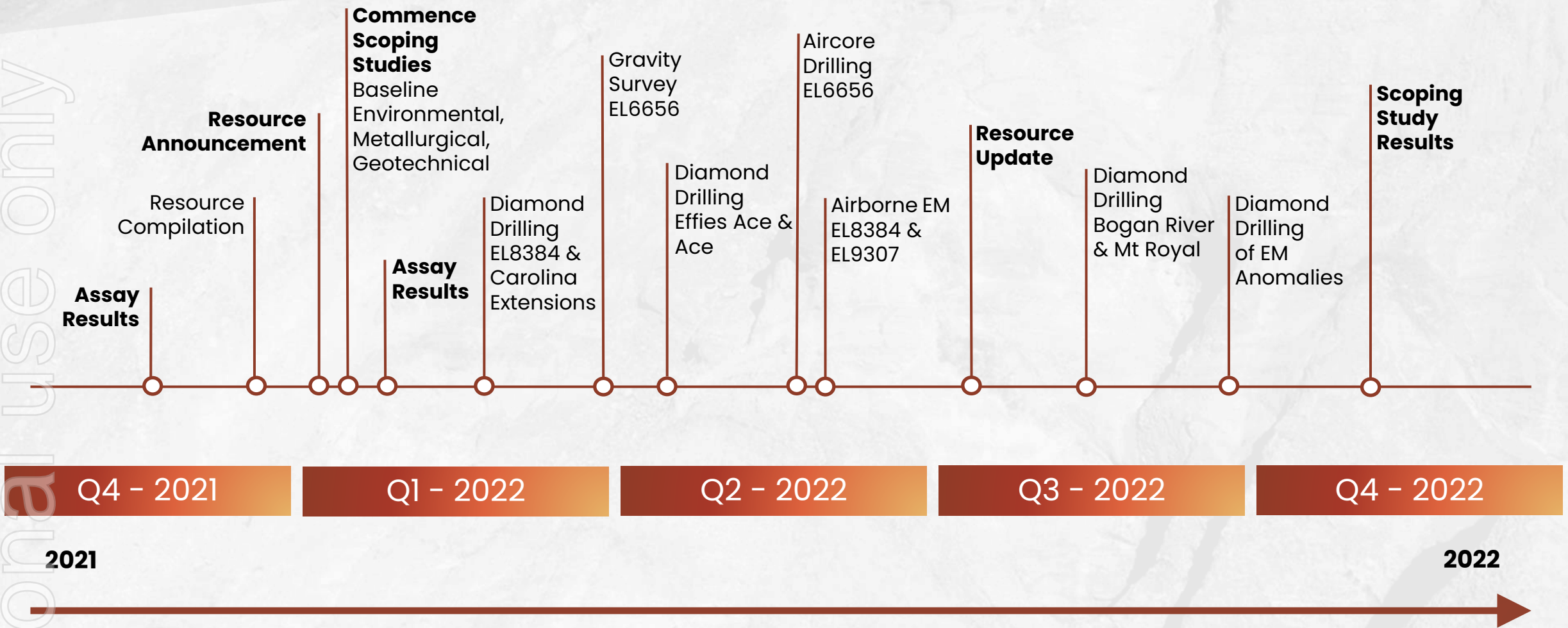


TMD030

ersonal use only

# Pricing Catalysts

ersonal use only



This timeline is indicative only and subject to change without notice. Given the impact of matters beyond our control, there may be delays to these timeframes.

# Keep the Drill Bit Spinning in 2022

Projects	Q1	Q2	Q3	Q4
<b>Bogan River</b>		Review Historic Core	Diamond/RC Drilling (800m)	
<b>Mount Royal</b>		Review Historic Core	Diamond Drilling (1000m)	
<b>Chris Watson</b>	Review Historic Core	Diamond/RC Drilling (1500m)		
<b>Orange Plains</b>	Review Historic Core			
<b>Effies Ace</b>		Diamond Drilling (600m)		
<b>Underlay</b>			Review Historic Core	Diamond Drilling (800m)
<b>Ace</b>	Review Historic Core	Diamond Drilling (600m)		
<b>Jimmy Woodser</b>		Review Historic Core		Diamond Drilling (600m)
<b>Carolina</b>	Diamond Drilling (2500m) Review Historic Core			
<b>EL 6656</b>	Gravity Survey	Aircore Drilling (1500m)		
<b>EL 8384</b>	Diamond Drilling (600m)	Airborne EM		Diamond Drilling (400m)
<b>EL 9307</b>		Airborne EM		Diamond Drilling (400m)

This timeline is indicative only and subject to change without notice. Given the impact of matters beyond our control, there may be delays to these timeframes.

# RC Drilling TORC017



# Why Invest?

Share in our exciting future, with an imminent JORC 2012 Compliant Resource ...



## Experienced Exploration Team

Based in Orange with a proven track record of discovery and development



## Infrastructure Advantage

Infrastructure already in place, grid power, rail, roads, water, accommodation and government services.



## Multiple Known Deposits

Eight significant historic mines, with two deposits currently being drilled.



## Multiple Drill Programs

More than 12 drilling programs scheduled in 2022.



## Global Demand of Copper

Quality copper supply, in record demand.



## Aggressive Exploration Program for 2022

Money spent in the ground



# A Team That Delivers

Passionate management with a track-record of generating shareholder returns...



## Steve Woodham

Managing Director

- Mr Woodham has over 30 years' experience in the mining and exploration industry in Western Australia, New South Wales and overseas.
- His area of specialisation includes field logistics land access in rural and remote environments and company management.
- He also has an extensive track record of tenement acquisition, mining investment and commercial and cross-cultural negotiation.
- Mr Woodham was a founding director of Centaurus Resources, YTC Resources (Aurelia), and managing director of Kingwest and Tellus Resources.
- Mr Woodham will not be considered an independent director.



## Adam Giles

Non Executive Chair

- Adam was the 10th Chief Minister of the Northern Territory and held office from 2013 until 2016. During his political career Adam held the portfolios of Northern Australia, Major Projects, Economic Development, Indigenous Affairs, Transport and Infrastructure and Treasury.
- Prior to politics, Adam had a long career in the Indigenous affairs, housing, training and employment sectors and previously worked as a social and economic policy adviser in the Department of Prime Minister and Cabinet and led Indigenous Economic Policy for the Australian Government.
- Adam now provides consultancy advice on agriculture and mining, politics, media, Indigenous policy and employment and training.
- Mr Giles will be considered an independent director.



## Steve Brockhurst

Non Executive Director

- Mr Brockhurst is the founding Director of Mining Corporate Pty Ltd and has over 15-20 years' experience in the finance and corporate advisory industry and has been responsible for the preparation of the due diligence process and prospectuses on a number of initial public offers.
- His experience includes corporate and capital structuring, corporate advisory and company secretarial services, capital raising, ASX and ASIC compliance requirements.
- Mr Brockhurst will be considered an independent director.



## Ian Cooper

Operations Manager

- Ian graduated from Sydney University in 1987 with BSc (Hons) and BE (Mining).
- He then worked at Broken Hill as a miner, ventilation and planning engineer.
- Ian completed an MSc in geology whilst working at Browns Creek in 1998. Ian has also worked on Cadia Hill, Cadia Quarry, Cadia East and Ridgeway deposits before becoming a founder of YTC Resources.
- Between 2004 and 2015 Ian was involved with exploration and mine development as Principal Geologist for YTC Resources / Aurelia Metals.
- During 2018 and 2019 also helped list and establish Kingwest Resources with a series of projects in the Leonora – Leinster – Darlot area.
- Since 2019 Ian consulted to a wide variety of mineral exploration projects in N.S.W. before helping to establish Locksley Resources.

# Historic ASX Announcements

- ❖ GRANT OF EL9307 EXPLORATION UPDATE ASX: LKY 26 October 2021
- ❖ RC DRILLING COMMENCES AT THE TOTTENHAM COPPER PROJECT & EXPLORATION UPDATE ASX: LKY 30 September 2021
- ❖ LOCKSLEY RESOURCES EXPLORATION UPDATE DRILLING COMMENCES AT TOTTENHAM ASX: LKY 24 August 2021
- ❖ LOCKSLEY RESOURCES PROSPECTUS 6 July 2021
- ❖ TOTTENHAM JV MINERAL RESOURCES – ANNUAL UPDATE ASX: MCR 10 September 2018
- ❖ TOTTENHAM JV EXPLORATION DRILLING UNDERWAY ASX: MCR 9 March 2018
- ❖ TOTTENHAM COPPER JOINT VENTURE ADVANCES ASX: MCR 27 November 2017
- ❖ HIGH GRADE DRILLING RESULTS AT TOTTENHAM COPPER PROJECT, NSW ASX: MCR 21 September 2017
- ❖ TOTTENHAM JV DRILLING UNDERWAY ASX: MCR 3 July 2017
- ❖ TOTTENHAM EARN-IN AND JOINT VENTURE ASX: MCR 17 February 2016
- ❖ EXPLORATION UPDATE: COPPER AND GOLD AT TOTTENHAM ASX: MCR 31 March 2011
- ❖ HIGH-GRADE COPPER-GOLD INTERSECTED IN EARLY DRILLING AT TOTTENHAM, NSW ASX: MCR 17 February 2011
- ❖ MINCOR INTERSECTS WIDESPREAD COPPER MINERALISATION AT TOTTENHAM PROJECT, NSW ASX: MCR 9 October 2007

**Contact**

# LOCKSLEY RESOURCES LIMITED

ACN 629 627 144

**Mr Stephen Woodham**  
Managing Director  
Locksley Resources Limited  
M – +61 417 293 449  
E – [woodhams@locksleyresources.com.au](mailto:woodhams@locksleyresources.com.au)

ersonal use only