

Personal use only

INFINITY GREENTECH

LOW CARBON FOOTPRINT LITHIUM HARD ROCK PROCESSING TECHNOLOGIES



www.infinitylithium.com

DISCLAIMER

For Consideration

This presentation has been prepared by Infinity Lithium Corporation Limited "Infinity Lithium". This document contains background information about Infinity Lithium current at the date of this presentation. The presentation is in summary form and does not purport to be all inclusive or complete. Recipients should conduct their own investigations and perform their own analysis in order to satisfy themselves as to the accuracy and completeness of the information, statements and opinions contained in this presentation.

This presentation is for information purposes only. Neither this presentation nor the information contained in it constitutes an offer, invitation, solicitation or recommendation in relation to the purchase or sales of shares in any jurisdiction.

This presentation does not constitute investment advice and has been prepared without taking into account the recipient's investment objectives, financial circumstances or particular needs and the opinions and recommendations in this presentation are not intended to represent recommendations of particular investments to particular persons. Recipients should seek professional advice when deciding if an investment is appropriate. All securities involve risks which include (among others) the risk of adverse or unanticipated market, financial or political developments.

To the fullest extent permitted by law, Infinity Lithium, its officers, employees, agents and advisors do not make any representation or warranty, express or implied, as to the currency, accuracy, reliability or completeness of any information, statements, opinions, estimates, forecasts or other representations contained in this presentation. No responsibility for any errors or omissions from this presentation arising out of negligence or otherwise are accepted.

This presentation may include forward-looking statements. Forward-looking statements are only predictions and are subject to risks, uncertainties and assumptions which are outside the control of Infinity Lithium. Actual values, results or events may be materially different to those expressed or implied in this presentation. Given these uncertainties, recipients are cautioned not to place reliance on forward looking statements. Any forward-looking statements in this presentation speak only at the date of issue of this presentation. Subject to any continuing obligations under applicable law, Infinity Lithium does not undertake any obligation to update or revise any information or any of the forward-looking statements in this presentation or any changes in events, conditions, or circumstances on which any such forward looking statement is based.

Competent Persons Statement

The information in this report that relates to Exploration Targets and Mineral Resources is based on the information compiled by Mr Patrick Adams, of Cube Consulting Pty Ltd (Perth). Mr Adams has sufficient relevant professional experience with open pit and underground mining, exploration and development of mineral deposits similar to the style of mineralisation and type of deposit under consideration and to the activity which he is undertaking to qualify as a Competent Person as defined in the 2012 Edition of JORC Code He has visited the project area and observed drilling, logging and sampling techniques used by Infinity Lithium in collection of data used in the preparation of this report. Mr Adams is an employee of Cube Consulting Pty Ltd and consents to be named in this release and the report as it is presented.

The information in this report that relates to Exploration Results is based on the information compiled or reviewed by Mr Adrian Byass, B.Sc Hons (Geol), B.Econ, FSEG, MAIG and an employee of Infinity Lithium. Mr Byass has sufficient experience relevant to the style of mineralisation and type of deposit under consideration and to the activity which he is undertaking to qualify as a Competent Person as defined in the 2012 Edition of the JORC Code. Mr Byass consents to the inclusion in the report of the matters based on this information in the form and context in which it appears.

INFINITY GREENTECH

development & commercialisation of novel low carbon footprint lithium hard rock processing technologies.



Patent Applications

provisional **patent applications lodged** for a sustainable and novel lithium hydrometallurgical conversion process.



Test Work

Phase 1 test work **complete** – open circuit lithium recoveries
Phase 2 test work **commencing** – locked cycle test work
Pilot plant design **underway** – long lead items identified

INFINITY GREENTECH

efficient & environmentally friendly solution



Environmentally Friendly

low cost & recyclable reagents

lower carbon footprint

waste minimised

powered by renewable energies

non-toxic reagents & waste



Simple & Rapid Processing

rapid process kinetics

lower energy and reagent use

lower CAPEX & OPEX requirements

reduced physical footprint

timely adaption to market demand



End Product Optionality

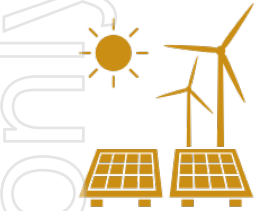
battery grade lithium carbonate

battery grade lithium hydroxide

by-products

INFINITY

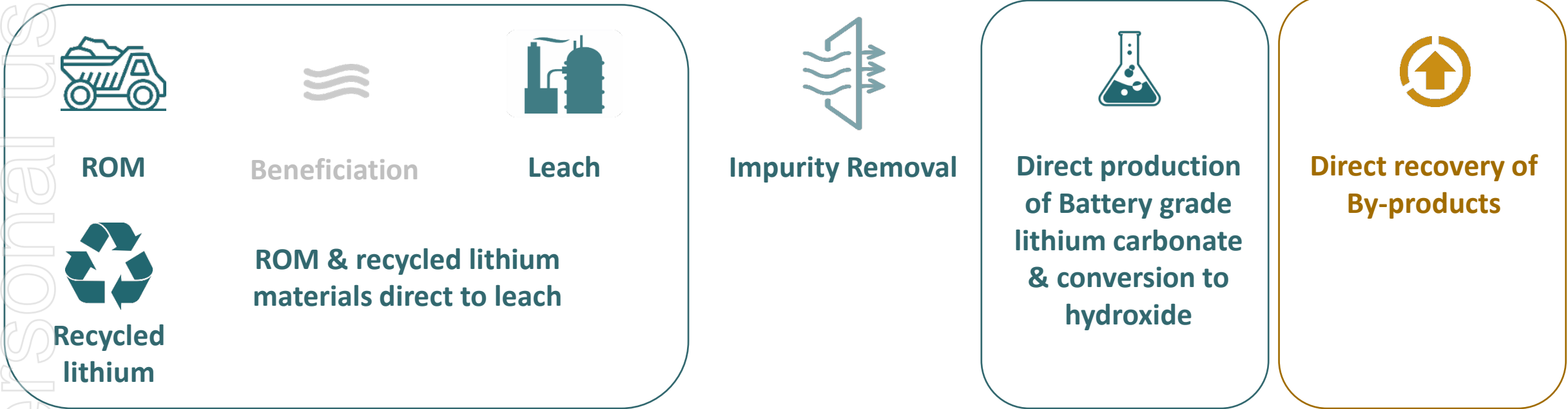
Simplified and rapid process – lower capital requirement



Renewable Energy



Potential application to lithium bearing mineral resources & recycled materials
hard rock & clay lithium resources
recycled lithium from LiBs



INFINITY GREENTECH

TEST WORK

Phase 1

Bench Scale

Open Circuit

Complete

Lithium Recoveries

60-70%

Feedstock

ROM

Phase 2

Bench Scale

Locked Cycle

Commencing

Lithium Recoveries

*upon completion of phase 2
test work

Feedstock

ROM

PILOT PLANT

design and layout

equipment identified and available

project agreement drafted

in-house or 3rd party location
assessment

INFINITY GREENTECH

developing & commercialising novel low carbon footprint lithium hard rock processing technologies



**Environmentally
Friendly**



**Simple & Rapid
Processing**



**End Product
Optionality**

Lithium recoveries confirmed in phase 1 test work



provision patent applications lodged

Phase 2 test work to commence



locked cycle test work

Pilot plant design and planning underway



project agreement and collaborations to be announced

CONTACT US

This release is authorised by the Managing Director



AUSTRALIA

Unit 32, Level 3,
22 Railway Road
Subiaco, 6008
Western Australia

T: +61 (0)8 6146 5325
E: admin@infinitylithium.com



SPAIN

Caceres
Extremadura Mining S.L.
Calle Juan de la Cierva n 18
Cáceres. Spain

T: +34 927 208 134
E: admin@extremaduramining.com

