

ersonal use only



HIGH IMPACT IRON ORE EXPLORATION IN WESTERN AUSTRALIA'S KIMBERLY REGION

Corporate Presentation | August 2021

ASX:PFE | panteraminerals.com

Disclaimer and forward-looking statements

This presentation is not a prospectus nor an offer of securities for subscription or sale in any jurisdiction nor a securities recommendation. The information in this presentation is an overview and does not contain all information necessary for investment decisions. In making investment decisions, investors should rely on their own examination of Pantera Minerals Limited (Company) and consult with their own legal, tax, business and/or financial advisers in connection with any acquisition of securities or interest in Company. The information contained in this presentation has been prepared in good faith by the Company. However, no representation or warranty, express or implied, is made as to the completeness or adequacy of any statements, estimates, opinions or other information contained in this presentation. To the maximum extent permitted by law, the Company, its directors, officers, employees and agents disclaim liability for any loss or damage which may be suffered by any person through the use of, or reliance on, anything contained in or omitted from this presentation. Certain information in this presentation refers to the intentions of the Company, but these are not intended to be forecasts, forward looking statements, or statements about future matters for the purposes of the Corporations Act 2001 (Cth) or any other applicable law. The occurrence of events in the future are subject to risks, uncertainties and other factors that may the Company's actual results, performance or achievements to differ from those referred to in this presentation to occur as contemplated. The presentation contains only a synopsis of more detailed information available in relation to the matters described in this document and accordingly no reliance may be placed for any purpose whatsoever on the sufficiency or completeness of such information and to do so could potentially expose you to a significant risk of losing any of the property invested by you or incurring by you of additional liability. Recipients of this presentation should conduct their own investigation, evaluation and analysis of the business, data and property described in this presentation. In particular, any estimates or projections or opinions contained herein necessarily involve significant elements of subjective judgment, analysis and assumptions and you should satisfy yourself in relation to such matters.

COMPETENT PERSON STATEMENT

The information in this report that relates to exploration results and exploration targets is based on and fairly represents information compiled by Mr Nick Payne, a Competent Person whom is a Member of the Australasian Institute of Mining and Metallurgy. Mr Payne has sufficient experience that is relevant to the style of mineralisation and type of deposit under consideration and to the activity being undertaken to qualify as a Competent Person as defined in the 2012 Edition of the 'Australasian Code for Reporting of Exploration Results, Mineral Resources and Ore Reserves'. Mr Payne consents to the inclusion in the report of the matters based on his information in the form and context in which it appears.

All parties have consented to the inclusion of their work for the purposes of this presentation. The interpretations and conclusions reached in this presentation are based on current geological theory and the best evidence available to the author at the time of writing. It is the nature of all scientific conclusions that they are founded on an assessment of probabilities and, however high these probabilities might be, they make no claim for absolute certainty. Any economic decisions which might be taken on the basis of interpretations or conclusions contained in this presentation will therefore carry an element of risk.

This release has been authorised by the Board of Pantera Minerals Limited.

Pantera Projects

Yampi Iron Ore Project

- Potential for a high-grade, high tonnage Iron Ore discovery
- Permitting well advanced
- Diamond drilling expected to commence September - October 2021 with results due Q4/21
- 5km to coast - 25 km from Koolan Island

Yampi Copper Project

- 8km from Yampi Massive IOCG style magnetic anomaly and magmatic Nickel-Copper potential

Weelarrana Manganese Project

- 45 km from Element 25 Manganese Resource

Fredericks Polymetallic Project

- Lead/Zinc/Copper potential
- Similar geological setting to Galena's Abra deposit



DRIVING WESTERN AUSTRALIA'S NEXT MAJOR IRON ORE DISCOVERY

Corporate Overview

Emmanuel Correia
Non-Executive Director

Emmanuel has over 25 years' public company and corporate finance experience in Australia, North America and the United Kingdom and is a founding director of Peloton Capital and Peloton Advisory. Mr Correia is an experienced public company director/officer and, prior to establishing Peloton Capital in 2011, he was a founder and major shareholder of Cardrona Capital which specialised in providing advisory services to the small/mid cap market in Australia.

Barnaby Egerton-Warburton
Non-Executive Chairman

Barnaby has over 25 years of investment banking, international investment and market experience with positions at JP Morgan (New York, Sydney, Hong Kong), BNP Equities (New York) and Prudential Securities (New York). An experienced investment banker and corporate advisor, having held managing director and non-executive director positions in the investment banking, oil & gas and resource and technology sectors. He holds a degree in economics and is a graduate of the Australian Institute of Company Directors.

John Hebenton
Non-Executive Director

John has over 40 years' experience as MD/CEO, Director and Project Manager in the Resources Industries across Australia, China, Turkey, Germany, UK, Kyrgyzstan and India covering every project phase from exploration to production. A focus has been the development of global scale iron ore assets including exploration, mining, downstream processing, off-take, logistics and funding. He is a Member of the Australian Institute of Company Directors, an engineering graduate from Curtin University, a Fellow of the Institution of Engineers Australia and a Member of the Australasian Institute of Mining & Metallurgy.

Matthew Hansen
Chief Executive Officer

Matt is a Noongar man & lawyer with over 10 years broad experience. For the past 7 years Matt has acted as a sole practitioner advising on energy, resources and regulatory matters providing advice to resources companies, such as Northern Star Resources, Billabong Gold, Western Areas and De Grey Mining with internal secondment to RIO Tinto advising on corporate legal matters in relation to their Asia Pacific exploration.

Nick Payne
Head of Exploration

Nick has over 20 years experience in the global resource industry having worked for AngloGold, BHP, Cliffs Natural Resources, Mount Gibson Iron, Boart Longyear and Imdex Limited in a range of roles from Senior Mine Geologist, Senior Exploration Geologist, Exploration Manager, Business Development Manager and Global Product Manager both within Australia and Canada primarily within the iron ore and gold sectors and with experience in copper and coal. Nick was previously the Senior Exploration Geologist and Exploration Manager for Mt Gibson Iron with responsibility for exploration at Koolan Island Iron Ore project.

Capital Structure

69m
SHARES ON ISSUE
(44% ESCROWED)

\$7.19M
CASH AT 5th AUGUST

\$24.8m
FULLY DILUTED MKT CAP @ .36C



Yampi Iron Ore Project High-Grade Hematite Opportunity

PLUTON RESOURCES

Resource: 12 million tonnes 67% Fe
Reserve: 1.2 million tonnes 68% Fe
(stage 4 - remnant ore)

COCKATOO ISLAND

Mt GIBSON IRON

Resource: 68 million tonnes 63% Fe
Reserve: 30 million tonnes 64% Fe
(Approx: 70 Mt mined)

KOOLAN ISLAND

YAMPI PROJECT

30km from Australia's highest-grade direct shipping ore (DSO) Hematite Ore Mine - Koolan Island (18.7 Mt grading 65.5% Fe)



BUCCANEER ARCHIPELAGO

WESTERN AUSTRALIAN MAINLAND

E04/2542

E04/2700

E04/2660

E04/2701

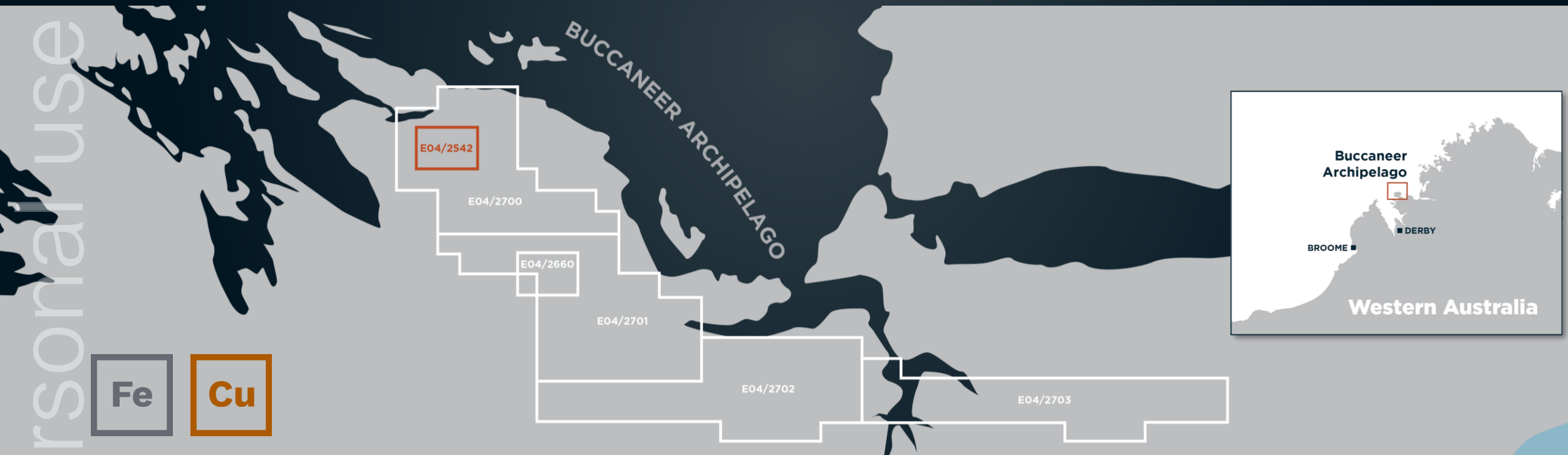
E04/2702

E04/2703

Yampi Iron Ore Project High-Grade Hematite Opportunity

- Located in the Buccaneer Archipelago, 140km north of Derby
- Tenure
 - 80% - E04/2542 granted – 20km²
 - 100% - 620km² of four contiguous EL's under application

- Widespread hematite mineralisation confirmed
- Clear pathway to market <5km's to coastline and deep-water port channel potential
- Planned drill program developed



YAMPI IRON ORE PROJECT – NUMEROUS TARGETS NEVER DRILLED

Primary Project & Key Focus

- Abundant high-grade hematite mineralisation identified
 - High-grade/low-impurity (clean) ore grab samples assayed over 50km²
- Clear pathway to market with DSO potential <5km from the coast and deep-water port channel
- Preliminary beneficiation test work confirms upgrade potential to saleable product
- Significant contiguous landholding to Yampi Iron ore project under application
- Aeromag/Radiometric and Satellite data has identified numerous Fe and Base Metal targets within the broader tenement area
- Mapping of hematite horizons completed
- Heritage and site surveys completed with traditional owners Dambimangari People

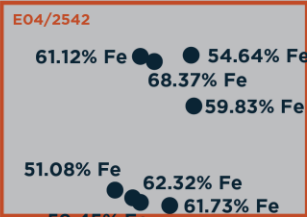


HIGH-GRADE SAMPLING HIGHLIGHTS

YAMPI POTENTIAL

SAMPLE	Fe	P	S	SiO2	Al2O3
	%	%	%	%	%
1	59.88	0.162	0.028	35.09	1.96
2	61.12	0.031	0.035	23.29	0.91
3	68.37	0.008	0.006	13.44	0.44
4	54.64	0.009	0.188	18	1.36
5	59.83	0.162	0.028	10.3	1.96
6	51.08	0.011	0.045	24.3	0.45
7	59.45	0.034	0.024	12.3	1.4
8	62.32	0.03	0.005	9.48	0.51
9	61.73	0.005	0.053	10.35	0.39
10	57.51	0.117	0.015	5.91	1.58

GRANTED PERMIT
UNDER APPLICATION

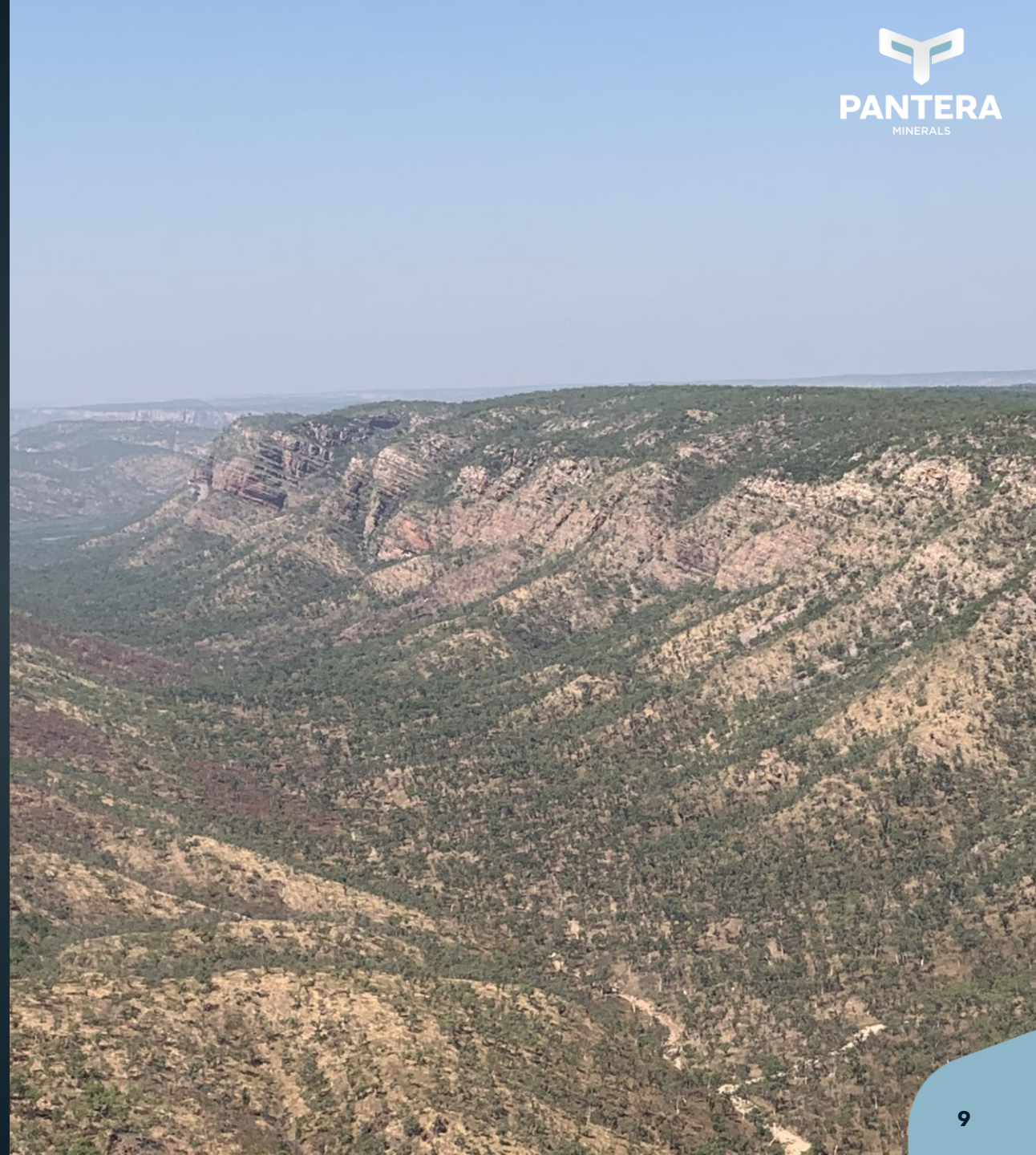


NEAR-TERM EXPLORATION AND NEWS FLOW

- Heli-Drill rig commissioned – Aug 2021
- All approvals received – Sept 2021
- Heli-Drill Rig mobilised to drill site – Mid-Sept 2021
- 5 hole drill program – October/November 2021
- Assays results –Mid/Late Dec 2021
- New exploration targets - Q1/Q2 2022

"This is a high impact exploration program with a low environmental footprint to determine if geology and high grade exist at depth kicking off with drilling late September/early October with an exciting 12 months of planned activity"

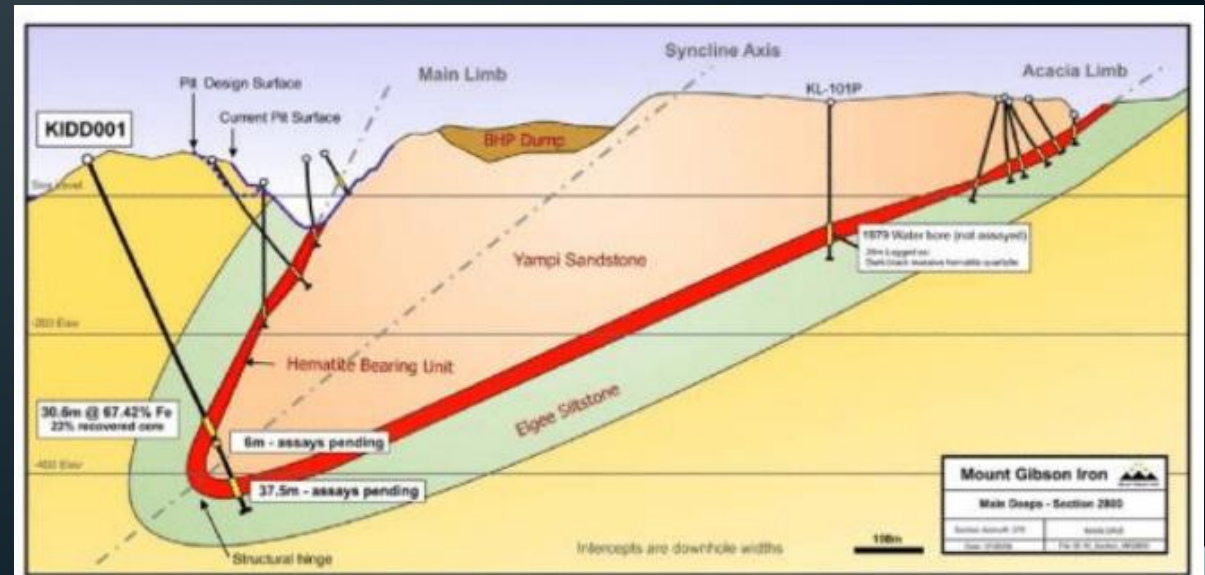
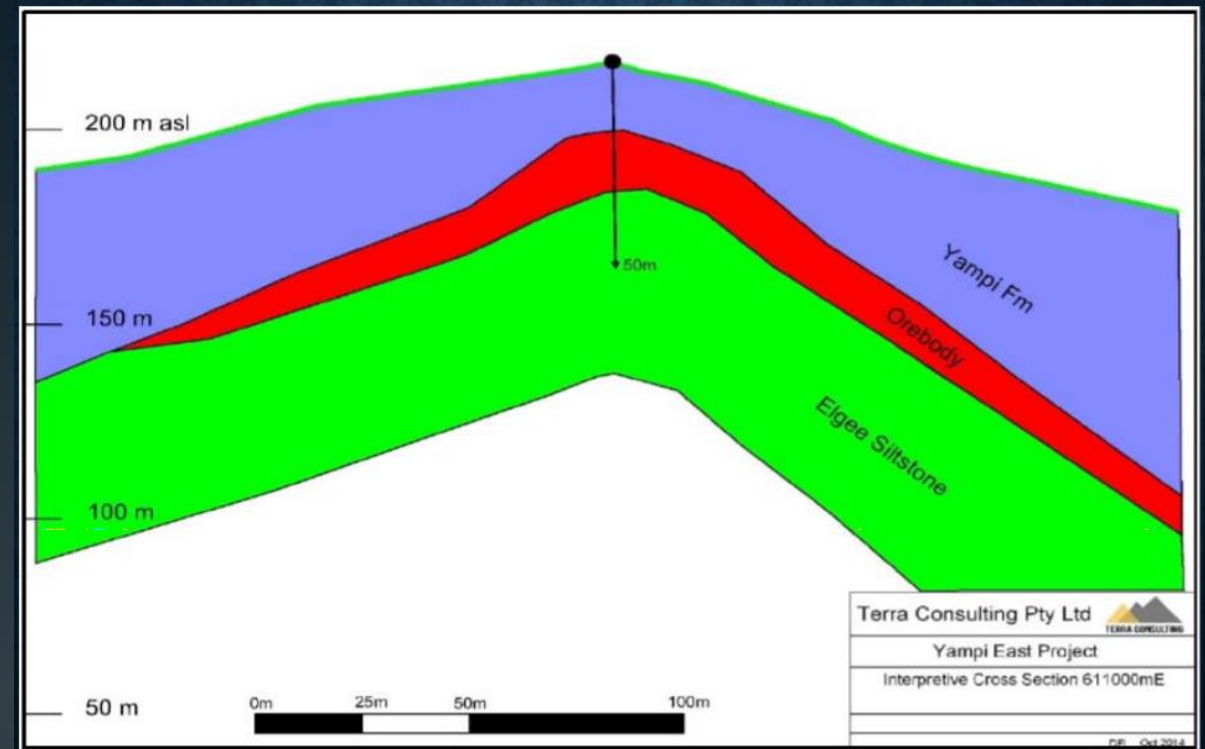
- CEO Matt Hansen



Yampi Geology

Targeting Elgee siltstone sequence

- Flat lying to gently dipping strataform mineralisation – simple mining method
- Yampi Formation and Elgee sandstone/siltstone sequence identified widely across the project area
- The contact between the Yampi and Elgee hosts the hematite orebody at Koolan and Cockatoo Island
- Outcropping Fe occurs as both massive and hematite rich sandstone within the Elgee Siltstone at Yampi
- Previous exploration on Yampi Project Area limited to minor stream sediment, rock chip sampling and mapping



Yampi Geochemistry

Potential for DSO and beneficiable ore

Rock-chip geochemistry confirms potential for beneficiable ore and possible DSO, including:

- Widespread hematite sandstone
- Rock chip grades 55 to 65% Fe
- Very low LOI
- Low Alumina/Phosphorus/Calcium
- Beneficiation test work indicates potential upgrade to 60% Fe saleable product from lower grade material (40-50% Fe)

Preliminary mineralogy

- 10 Samples above 55% Fe grading to 68% Fe
- Hematite forms matrix between sand/chert grains (0.2-0.4mm)
- Hematite occurs as massive fine-grained aggregates



Proposed Exploration Program

Initial exploration to establish potential for world class-iron ore deposit

5 diamond holes located through centre of the deposit

Program to provide samples for metallurgical test work

6 weeks to complete – laboratory assay grades further 8 weeks

Drilling to provide an understanding of the potential of the Yampi Iron Project by the end of the year



Partnering with Traditional Owners

Respect, Care, Culture

- Yampi lies within the Native Title determination of the Dambimangari People
- Pantera to continue constructive relationship with Dambimangari People
- Heritage Survey & Field Survey conducted
- Shown interest in employment – Drilling Program
- Dambimangari people have entered into mining agreements with the Koolan, Cockatoo and Irvine Island Mining Operations

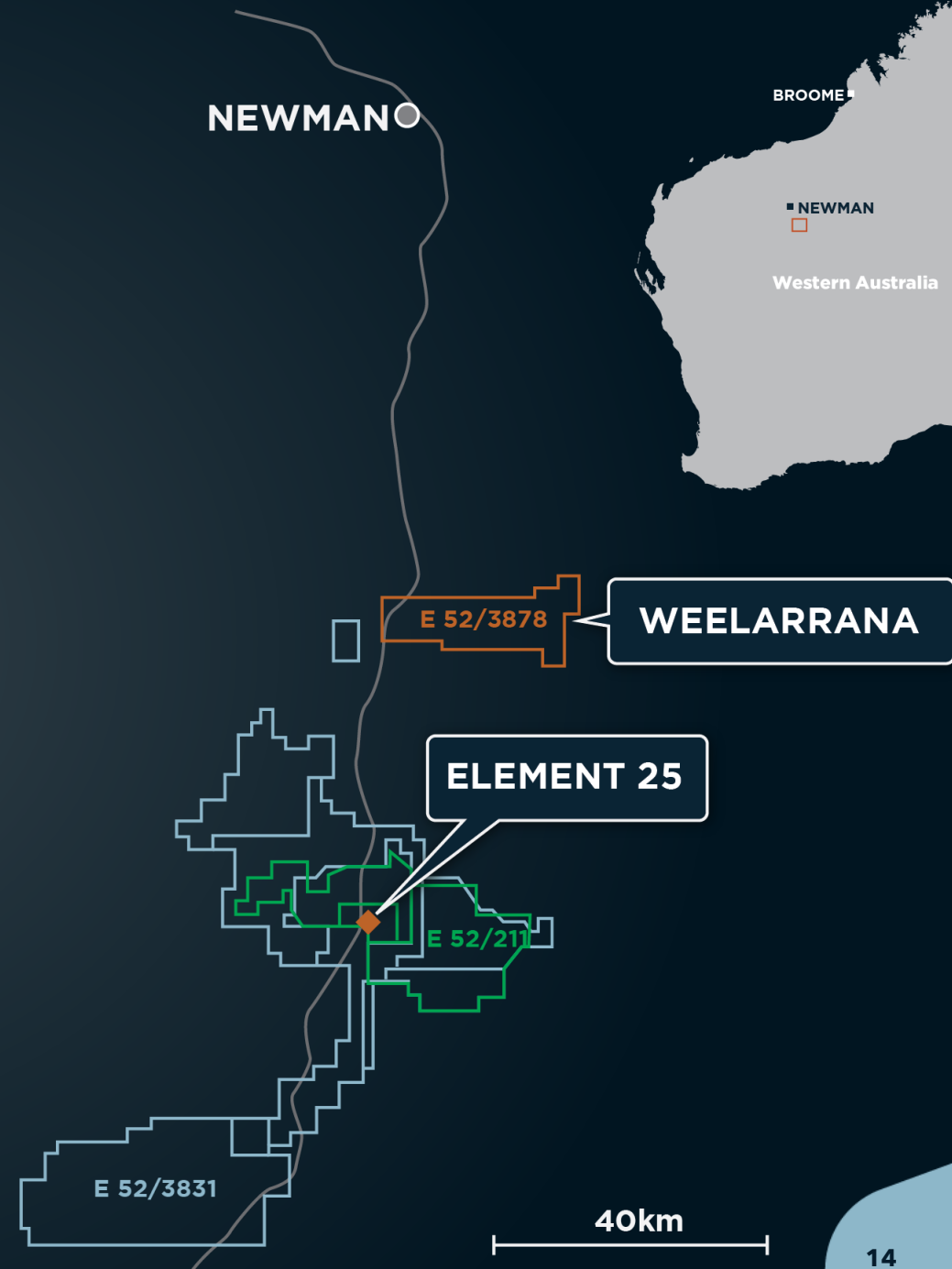


Weelarrana Manganese Project

- E52/3878 – 212 sq km
- Located 75km south of Newman, access via Great Northern Highway
- 32-42% Mn pXRF results of grab samples with an average of 37% Mn
- Outcropping to sub-cropping Manganese horizon traced for over 500m of strike with potential extensions under cover east and west
- Butcherbird Project (ASX:E25) <45km south
 - +260 Mt of Manganese ore in Measured, Indicated and Inferred JORC resources**



**Element 25 Limited ASX release dated 17 April 2019



Frederick Base Metal Project

- E09/2469 – 278 sq km. Located in the Gascoyne region of Western Australia
- Polymetallic sedimentary potential (Pb–Zn–Ba–Cu ± Au ± Ag ± Bi ± W)
- Located <170km WNW of the world-class Abra Project (ASX:G1A) in the same stratigraphy with similar geophysical and geochemical characteristics:
 - 41.1Mt Resource @ 7.3% lead and 18g/t silver**
- Galena Mining Ltd, Abra project, poised to be a high-grade lead producer
- Rock Chip sampling recorded 1.7% Pb, 1.03% Zn, 13g/t Ag & 0.17% Cu
- Well defined drill target with coincident geophysical and Pb-Zn geochemical anomaly in a favourable structural setting



**Galena Mining Ltd ASX Release 22 July 2019



¹Galena ASX announcement [17 October 2019]



PANTERA

MINERALS

Contact Information

Barnaby Egerton-Warburton | Non-Executive Chairman

0437 291 155
barnaby@bxwcap.com

Matt Hansen | CEO

0401 499 379
matthansen@panteramineral.com