

Incannex psychedelic therapies

A subsidiary of Incannex Healthcare Ltd

ASX: IHL

Psi-GAD clinical development overview
August 2021

Disclaimer

Not an offer of Securities: This document has been independently prepared by Incannex Healthcare Limited (Incannex) and is provided for informational purposes only. This document does not constitute or contain an offer, invitation, solicitation, or recommendation with respect to the purchase or sale of any security in Incannex. This document does not constitute an offer to sell, or a solicitation of an offer to buy, any securities in any jurisdiction (in particular, the United States), or a securities recommendation. This document is not a prospectus, product disclosure statement or other offering document under Australian law or any other law and will not be lodged with the ASIC.

Summary Information: This document contains a summary of information about Incannex and its activities that is current as at the date of this document. The information in this document is general in nature and does not purport to be complete or to contain all the information which a prospective investor may require in evaluating a possible investment in Incannex or that would be required in a prospectus or a product disclosure statement prepared in accordance with the Corporations Act 2001 (Cth) (Corporations Act). **No Liability:** The information contained in this document has been prepared in good faith by Incannex, however no guarantee representation or warranty expressed or implied is or will be made by any person (including Incannex and its affiliates and their directors, officers, employees, associates, advisers and agents) as to the accuracy, reliability, correctness, completeness or adequacy of any statements, estimates, options, conclusions or other information contained in this document. To the maximum extent permitted by law, Incannex and its affiliates and their directors, officers employees, associates, advisers and agents each expressly disclaims any and all liability, including, without limitation, any liability arising out of fault or negligence, for any loss arising from the use of or reliance on information contained in this document including representations or warranties or in relation to the accuracy or completeness of the information, statements, opinions, forecasts, reports or other matters, express or implied, contained in, arising out of or derived from, or for omissions from, this document including, without limitation, any financial information, any estimates or projections and any other financial information derived therefrom. Statements in this document are made only as of the date of this document unless otherwise stated and the information in this document remains subject to change without notice. No responsibility or liability is assumed by Incannex or any of its affiliates for updating. **Not Financial Product Advice:** This document does not constitute financial product advice or consider your investment objectives, taxation situation, financial situation or needs. This document consists purely of factual information and does not involve or imply a recommendation of a statement of opinion in respect of whether to buy, sell or hold a financial product. An investment in Incannex is considered to be speculative in nature. Before making any investment decision in connection with any acquisition of securities, investors should consult their own legal, tax and/or financial advisers in relation to the information in, and action taken on the basis of, this document.

Information in this Document is Confidential: This document and the information contained within it are strictly confidential and are intended for the exclusive benefit of the persons to whom it is given. It may not be reproduced, disseminated, quoted or referred to, in whole or in part, without the express consent of Incannex. By receiving this document, you agree to keep the information confidential, not to disclose any of the information contained in this document to any other person and not to copy, use, publish, record or reproduce the information in this document without the prior written consent of Incannex, which may be withheld in its absolute discretion. **Acceptance** By attending an investor presentation or briefing, or accepting, accessing, or reviewing this document you acknowledge and agree to the "Disclaimer" as set any information in this document or to inform any recipient of any new or more accurate information or any errors or mis-descriptions of which Incannex and any of its affiliates or advisers may become aware. **Forward Looking Statements:** Certain information in this document refers to the intentions of Incannex, but these are not intended to be forecasts, forward looking statements, or statements about the future matters for the purposes of the Corporations Act or any other applicable law. The occurrence of the events in the future are subject to risk, uncertainties and other actions that may cause Incannex's actual results, performance, or achievements to differ from those referred to in this document. Accordingly, Incannex and its affiliates and their directors, officers, employees and agents do not give any assurance or guarantee that the occurrence of these events referred to in the document will actually occur as contemplated. Statements contained in this document, including but not limited to those regarding the possible or assumed future costs, performance, dividends, returns, revenue, exchange rates, potential growth of Incannex, industry growth or other projections and any estimated company earnings are or may be forward looking statements. Forward-looking statements can generally be identified by the use of words such as 'project', 'foresee', 'plan', 'expect', 'aim', 'intend', 'anticipate', 'believe', 'estimate', 'may', 'should', 'will' or similar expressions. These statements relate to future events and expectations and as such involve known and unknown risks and significant uncertainties, many of which are outside the control of Incannex. Actual results, performance, actions and developments of Incannex may differ materially from those expressed or implied by the forward-looking statements in this document. Such forward-looking statements speak only as of the date of this document. There can be no assurance that actual outcomes will not differ materially from these statements. To the maximum extent permitted by law, Incannex and any of its affiliates and their directors, officers, employees, agents, associates and advisers: • disclaim any obligations or undertaking to release any updates or revisions to the information to reflect any change in expectations or assumptions; • do not make any representation or warranty, express or implied, as to the accuracy, reliability or completeness of the information in this document, or likelihood of fulfilment of any forward-looking statement or any event or results expressed or implied in any forward-looking statement; and • disclaim all responsibility and liability for these forward-looking statements (including, without limitation, liability for negligence).

Psilocybin-assisted psychotherapy for Generalised Anxiety Disorder: a world-first clinical trial program

Unmet need in the treatment of Generalised Anxiety Disorder

- Around 300M people globally are estimated to have an anxiety disorder
- Generalised Anxiety Disorder (GAD) is often more severe and intractable than other anxiety disorders
- GAD is characterised by persistent and excessive worry, nervousness, irritability, and physical manifestations, including difficulty sleeping, fatigue, muscle tension, and nausea
- Treatment of GAD remains inadequate, with less than half of patients achieving remission following evidence-based treatment, alongside high relapse rates, and substantial treatment side-effects.

Promising signs in early psilocybin trials

- Evidence from academic studies has shown that psilocybin-assisted psychotherapy can produce large, rapid and sustained clinical benefits for patients suffering with anxiety and depression symptoms
- Psilocybin-assisted therapy has US FDA 'Breakthrough Therapy' designation in the treatment of Major Depressive Disorder and Treatment Resistant Depression.

Developing "Psi-GAD" psilocybin therapy for Generalised Anxiety Disorder

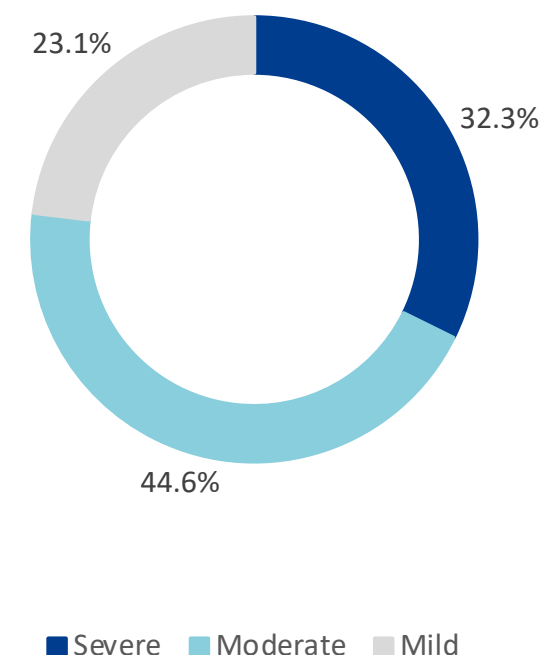
- Research proposal for Phase 2a clinical trial submitted to Human Research Ethics Committee (HREC) in Australia
- Pre-IND information package and meeting request submitted to US FDA regarding phase 2b clinical trial
- Clinical trial protocols, including therapy protocols, have been developed by experts in the fields of psychology, psychiatry, and psychedelic medicine.

Current treatments for Generalised Anxiety Disorder are inadequate

An estimated 7M people in the US and 1M in Australia have moderate to severe GAD, experiencing intense, persistent, and often debilitating anxiety

- GAD is diffuse, excessive, uncontrollable anxiety that is not restricted to any specific environmental circumstances and occurs more days than not for at least 6 months (American Psychiatric Association, 2013)
- About 3% of the adult population in the USA and Australia are estimated to have GAD in any 12 month period
- First line treatment options for GAD include Cognitive Behavioural Therapy, anti-depressants (SSRIs, SNRIs) and pregabalin, with benzodiazepines (e.g. Diazepam) as a second-line short-term option
- Existing treatments show limited efficacy, with less than 50% of patients achieving remission, alongside high relapse rates
- Treatment limitations expose significant patient unmet need.

Severity of GAD among Adults in the United States



Psi-GAD scientific leadership team

Deep and relevant experience

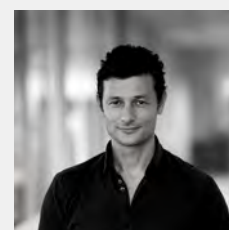


DR PAUL LIKNAITZKY
PRINCIPAL INVESTIGATOR
MONASH UNIVERSITY



Dr Liknaitzky is Head of the Clinical Psychedelic Research Lab within the Turner Institute and the Dept of Psychiatry, Monash University – Australia's first clinical psychedelic lab. He coordinates Australia's first applied psychedelic training for trial therapists. He is a Research Fellow at Monash University, and has Adjunct or Honorary appointments at St Vincent's Hospital, Macquarie University, Deakin University, and the University of Melbourne. He earned an Honours in Neuroscience and a PhD in Psychology from the University of Melbourne.

PROFESSOR MURAT YÜCEL
CO-INVESTIGATOR
MONASH UNIVERSITY



Professor Yücel is a clinical neuropsychologist who heads the Addiction and Mental Health research program at Monash, working at the interface between clinical neuropsychology, psychiatry, neuroscience and technology. He is the founding Director of BrainPark - a world-first neuroscience research clinic designed to bring the latest neuroscience with diagnostic or therapeutic benefit to the community in an accessible and inspiring way. He is a Co-Investigator within the Clinical Psychedelic Research Lab.

PROFESSOR SURESH SUNDAM
CO-INVESTIGATOR
MONASH UNIVERSITY



Professor Sundram is a psychiatrist, and Head of Department of Psychiatry at Monash University. He has a distinguished career as a clinician and researcher, and is Head of both the Translational Molecular Psychiatry and the Asylum Seeker and Refugee Mental Health research groups at Monash. He is an external expert advisor to the UN Human Rights Council, consultant to the Australian Human Rights Commission, the Australian Department of Home Affairs, and non-government organisations. He is a Co-Investigator within the Clinical Psychedelic Research Lab.

Academic-led clinical trial programs: Monash University and BrainPark

- Phase 2a clinical trial treatment will be delivered at BrainPark; a state-of-the-art research platform and collaboration between the Monash School of Psychological Sciences and the Department of Psychiatry
- Monash University consistently ranks among the world's top 100; ranking #55 out of 1604 university institutions and #35 in the world for life sciences and Medicine (QS World University Rankings)
- Strong academic partnerships ensure scientific independence and rigour for the best possible patient outcomes.

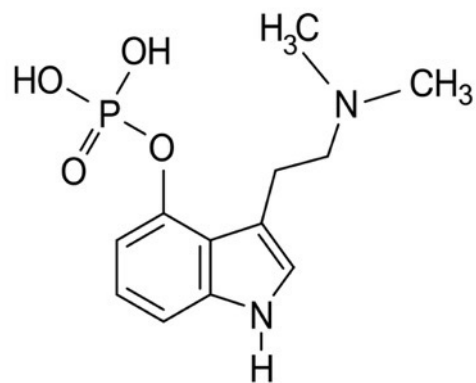


MONASH
University



Psilocybin-assisted psychotherapy: a new mental health treatment paradigm

Early studies indicate clinical benefits may be two to four times greater than front-line treatments.



Psilocybin molecule

Psilocybin is a naturally-occurring psychedelic molecule produced by more than 100 species of mushrooms. It is a well-tolerated serotonergic psychedelic that produces therapeutically useful **altered states of consciousness**, and possibly greater **neuroplasticity**, providing a “window of opportunity” for more successful psychotherapy.

Promising evidence for **rapid, large, and lasting** benefit for psilocybin-assisted psychotherapy in treating major depression, depression and anxiety symptoms associated with physical illness, and substance misuse.

Psilocybin-assisted psychotherapy does not work by suppressing or managing symptoms, but by facilitating access to more fundamental causes of anxiety, and providing a remarkable opportunity for patients to make **real and lasting changes**.

A year after treatment, clinical psilocybin sessions have been described as amongst the **top 5 personally meaningful experienced of lifetime** by more than 50% of participants.

Compass Pathways and Usona Institute have received **FDA Breakthrough Designation** for psilocybin-assisted psychotherapy in its use for depressive disorders, due to highly promising clinical evidence and substantial unmet need.

Clinical signals: early indications from academic-sponsored clinical trials

New York University, Ross et al 2016 (n=29)

Rapid and sustained symptom reduction following psilocybin treatment for anxiety and depression in patients with life-threatening cancer: a randomized controlled trial. Psilocybin produced immediate, substantial, and sustained improvements in anxiety and depression, as well as decreases in cancer-related demoralization and hopelessness, improved spiritual wellbeing, and increased quality of life.

University of California, Los Angeles, Grob et al 2011 (n=12)

Pilot study of psilocybin treatment for anxiety in patients with advanced-stage cancer. The State-Trait Anxiety Inventory anxiety subscale demonstrated a significant reduction in anxiety at 1 and 3 months after treatment. There were no clinically significant adverse events with psilocybin.

Imperial College London, Carhart-Harris et al 2018 (n=20)

Psilocybin with psychological support for treatment-resistant depression: six-month follow-up. Tolerability was good, effect sizes large and symptom improvements appeared rapidly after just two psilocybin treatment sessions, and remained significant 6 months post-treatment in a treatment-resistant cohort.

John Hopkins University, Griffiths et al 2017 (n=51)

Psilocybin produces substantial and sustained decreases in depression and anxiety in patients with life-threatening cancer: a randomized double-blind trial. Large and significant decreases in clinician-rated and self-rated measures of depression, anxiety or mood disturbance, and increase measures of quality of life, life meaning, death acceptance, and optimism.

Psilocybin + psychotherapeutic support for GAD

Psi-GAD

THE PSI-GAD TREATMENT APPROACH USES MULTIPLE HIGH DOSE PSILOCYBIN SESSIONS ALONGSIDE SPECIALISED PSYCHOTHERAPEUTIC SUPPORT WITH MENTAL HEALTH PROFESSIONALS WHO HAVE UNDERGONE A SPECIALISED THERAPIST TRAINING PROGRAM ALONGSIDE SUPERVISED PRACTICE. THE TREATMENT IS DESIGNED TO OPTIMISE PATIENT SAFETY AND THERAPEUTIC OUTCOMES IN GAD WITH SPECIFIC SUPPORT BEFORE, DURING AND AFTER PSILOCYBIN DOSING SESSIONS.

01

Preliminary Psychotherapy:

conducted during the Screening Stage with key focus on clinical formulation, therapeutic alliance, tools to navigate psychedelic experience, and practical preparation for dosing.

03

Dosing Support:

conducted soon after the Preparation session with key focus on trust, suitable mindset, conducive physical setting, and participant-led support.

02

Preparation Psychotherapy:

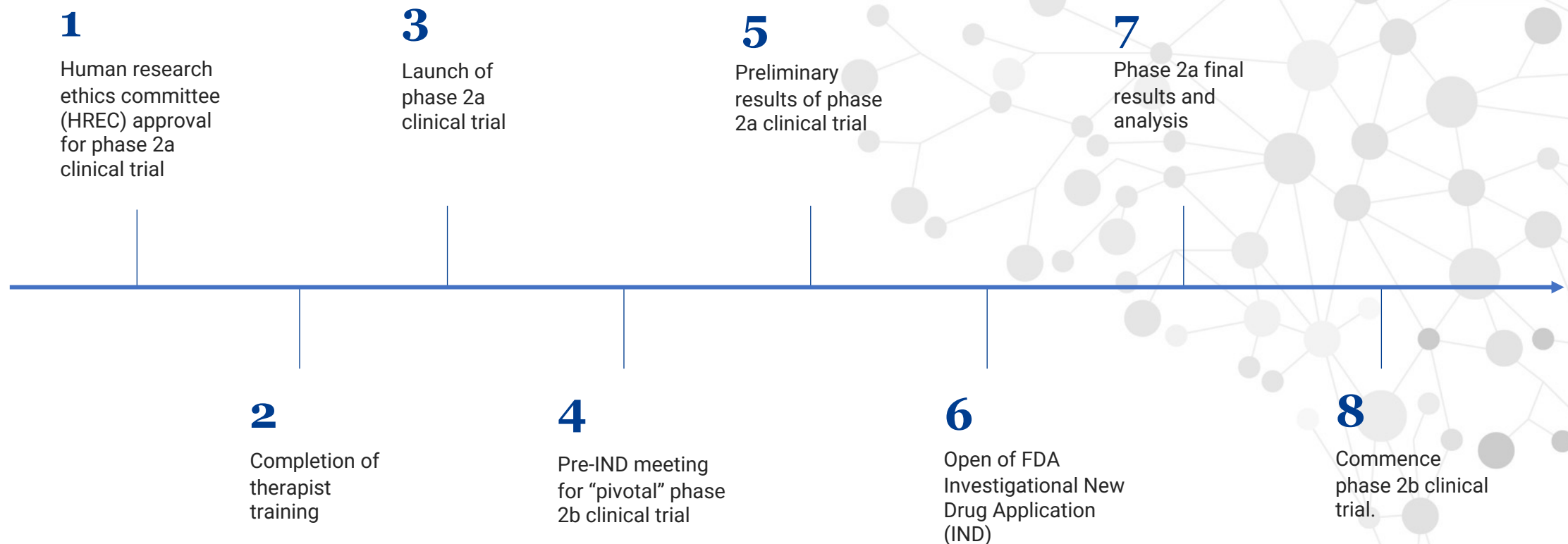
conducted following full enrolment and prior to the first dosing session with a key focus on anxiety-specific psychological and practical preparation for dosing.

04

Integration Psychotherapy:

conducted following the Dosing sessions, including the day after each Dosing session, with a key focus on sustaining benefits through re-engagement with past psychedelic experience, meaning-centred support, and contextual changes to support outcomes.

Psi-GAD immediate development plan



Phase 2a trial design

World-first clinical trial prioritising scientific independence and rigour for the best patient outcomes

THE STUDY

A phase 2 randomised triple-blind active-placebo-controlled clinical trial

SAFETY AND EFFICACY

The safety, efficacy and tolerability of psilocybin-assisted psychotherapy

PARTICIPANTS

72 participants that will experience two psilocybin or active-placebo dosing sessions

PSYCHOTHERAPY

Up to 11 non-drug, specialist psychotherapy sessions over a period of 10 weeks

PRIMARY OUTCOMES

Reduction in anxiety as measured using the Hamilton Anxiety Rating Scale

SECONDARY OUTCOMES

Quality of life, functional impairment, and comorbidities

ANALYSIS

A preliminary analysis of patient data will be conducted after 30 patients, full analysis at 72 patients

2B PLANNING

Preliminary analysis will inform the second part of the trial (n=42) and/or facilitate commencement of the phase 2b pivotal clinical trial

Comparative clinical programs working towards FDA approved therapies

Company Name	Psychedelic Drug	Lead Project Indication	Clinical Trial Phase	Progress	Stock Exchange
MAPS	MDMA	Post-traumatic stress disorder (PTSD)	Phase 3	Underway	Non-profit organisation
Compass Pathways	Crystalline Psilocybin	Treatment-resistant depression (TRD)	Phase 2	Underway	Nasdaq
Usona Institute	Psilocybin	Major Depressive Disorder (MDD)	Phase 2	Underway	Non-profit organisation
Cybin Inc.	Psilocybin	Major Depressive Disorder (MDD)	Phase 2a	Planning	NEO exchange
Mindmed	LSD	Anxiety	Phase 2	Planning	Nasdaq
Incannex Psychedelic Therapies	Psilocybin	Generalised Anxiety Disorder	Phase 2a	Planned - awaiting HREC approval	ASX



Summary

Experienced scientific team,
with deep and relevant
experience in Anxiety disorders

Australian **HREC
research proposal**
and FDA pre-IND
meeting request
submitted

**Phase 2a clinical
trial** to commence
2021 and Phase
2b in 2022

Intellectual property
and market exclusivity
strategies

Advancing a potential
second novel
psychedelic
opportunity

ersonal use only

JOEL LATHAM

IHL CEO & Managing Director
Email joel@incannex.com.au
Phone +61 409 840 786

DR PAUL LIKNAITZKY

Monash Principal Investigator
Email Paul.L@monash.edu
Phone +61 3 9905 2038