

19 April 2021

ASX Announcement

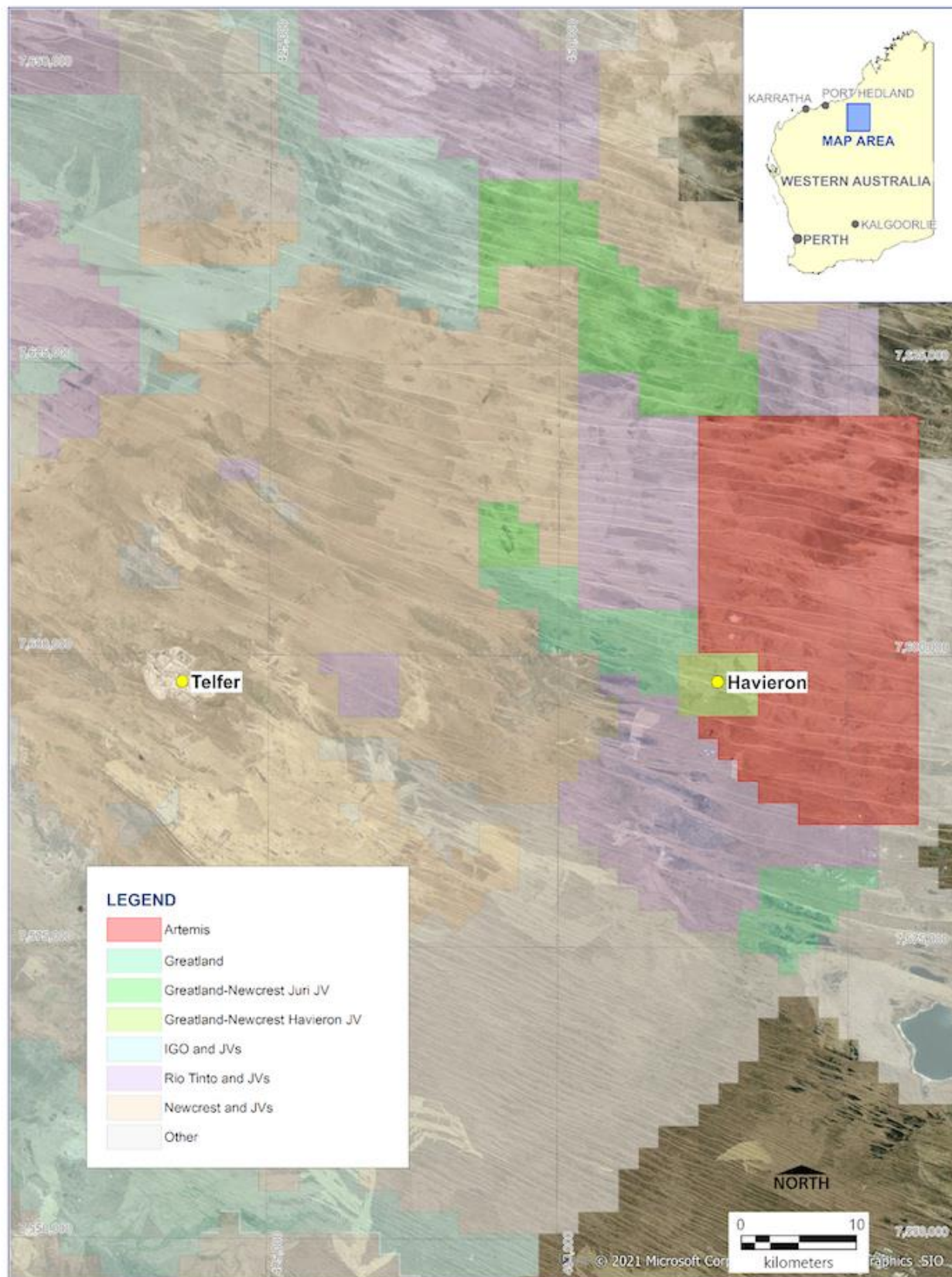
Paterson Central Project – Land Access and Mineral Exploration Agreement Executed with Western Desert Lands Aboriginal Corporation (Jamukurnu-Yapalikunu)

Artemis Resources Limited (“Artemis” or “the Company”) (ASX:ARV, Frankfurt: ATY, US OTCQB: ARTTF) and its wholly-owned subsidiary **Armada Mining Pty** are pleased to report they have executed a Land Access and Mineral Exploration Agreement as it relates to the Exploration Licence E45-5276 (“Paterson Central Project”) with the **Western Desert Lands Aboriginal Corporation (Jamukurnu-Yapalikunu)** (“WDLAC”).

Mark Potter, Non-Executive Chairman, commented: “I am delighted to report that we have concluded a Land Access and Mineral Exploration Agreement with WDLAC, the trustee for the Martu people who are the traditional owners of the lands that include the Paterson Central Project licence areas.”

“This is an important milestone in building a strong working relationship with WDLAC and the Martu people and reflects our commitment to making a positive economic and social contribution to the communities in which we operate.”

For personal use only



PATERSON REGION TENURE



About Artemis Resources

Artemis Resources (ASX: ARV; FRA: ATY; US: ARTTF) is a Perth-based exploration and development company, led by an experienced team that has a singular focus on delivering shareholder value from its Pilbara gold projects – the Greater Carlow Gold Project in the West Pilbara and the Paterson Central exploration project in the East Pilbara.

For more information, please visit www.artemisresources.com.au.

This announcement was approved for release by the Board.

For further information contact:

Alastair Clayton
Executive Director
alastair.clayton@artemisresources.com.au

Boyd Timler
Executive Director
boyd.timler@artemisresources.com.au