

## ASX ANNOUNCEMENT

RRL1732D

23 March 2021

### High Grade Intercepts at Youanmi Gold Project Extend Mineralisation

#### Highlights:

- **High-grade mineralisation extended by 100m to the south at Grace:**

Assays received for 3 holes, pending for 15 holes.

**RXRC363: 8m @ 19.9g/t Au from 68m, including 4m @ 38.3g/t Au from 68m.** Shallow high-grade mineralisation in Granite at **Grace South**.

**RXRC362: 4m @ 5g/t Au from 40m** in Granite at **Grace South**.

**RXRC361: 4m @ 6g/t Au from 84m and 8m @ 4.1g/t Au from 112m** at **Junction**.

- **RC drilling continues at new high priority targets, Grace South, Link and Junction.**

Australian gold and nickel company, Rox Resources Limited ("Rox" or "the Company") (ASX: RXL), in conjunction with its joint venture partner Venus Metals Corporation Limited (ASX: VMC) is pleased to provide an update on exploration activities at Youanmi Gold Project near Mt Magnet, WA, in the OYG JV area (Rox 70% and Manager, VMC 30%).

Assay results from the current drill program, which commenced in early February 2021, have now started to flow in. Results have been received for three holes, results are awaited for 15 holes. The Company notes assay turnaround times are running at approximately 5-6 weeks due to increased activity across the sector.

We are pleased to report that recently returned drill results have extended the known area of high-grade mineralisation at Grace by 100m to the south of previously determined extent. The highlight of this round of drilling being **8m @ 19.9 g/t Au** encountered in a shallow position in RXRC363.

The current RC drilling program has been designed to test the southern continuation of the Grace deposit and other high grade near mine targets including the recently identified high priority Junction and Link targets.

**Managing Director Alex Passmore commented:** "We are pleased to report these latest strong drill results from Youanmi and the shallow strike extensions at Grace. We look forward to updating the market as more results come to hand."

#### ROX RESOURCES LIMITED

##### ASX: RXL

*Rox Resources Limited (ASX: RXL) is an Australian listed company with advanced gold and nickel projects in Western Australia: the Youanmi Gold Project, Mt Fisher Gold project, and the Fisher East and Collurabbie Nickel projects.*

##### DIRECTORS

**Mr Stephen Dennis**  
Chairman

**Mr Alex Passmore**  
Managing Director

**Dr John Mair**  
Non-Executive Director

##### Pro-forma post placement:

**Shares on Issue** 2,363m

**Share Price** \$0.04

**Market Cap.** \$94.5m

**Cash & Receivables** \$20.3m

(incl \$3.75m receivable, cash as at 31 Dec 2020, plus gross placement proceeds)

Level 1, 34 Colin Street,  
West Perth WA 6005

+61 8 9226 0044

admin@roxresources.com.au

[www.roxresources.com.au](http://www.roxresources.com.au)

Following the extensive drilling campaign in 2020 a re-interpretation of structural controls on mineralisation at Youanmi was completed which identified underexplored high priority targets. This re-interpretation, a result interpretation of 2020 drilling results, structural relogging of historical diamond core and an audit of historical mining data, indicates that high-grade mineralisation along the Mine Shear Zone is strongly associated with shallow-plunging dilational shoots trending NNW.

The RC holes reported in this announcement (RXRC363: 8m @ 19.9g/t Au from 68m and RXRC362: 4m @ 5g/t Au from 40m at Grace South and RXRC361: 4m @ 6g/t Au from 84m and 8m @ 4.1g/t Au from 112m at Junction.) have confirmed the new interpretation is geologically robust and additional RC drilling has been planned.

This new geological model indicates these targets have strong potential to significantly enhance near mine gold inventory.

#### **Key Targets:**

Recent exploration work has identified the important Link and Junction targets, which are the intersection zones between N-S trending conjugate structures and the NW trending mine shear. The intersection of N-S trending lode structures (Hill End, Peru) with the NW trending high strain zone (Main Pit, northern pits) is where the major accumulations of gold are found at Youanmi. The intersection of these structures form high grade shallow NNW plunging shoots within overall steeply south plunging mineralised envelopes.

Current drilling is delineating and extending shallow high-grade shoots in the mine area with the aim of increasing near-mine resource. Additionally, results from the RC program will aid in refining deeper down plunge targets for drill testing with an extensive upcoming diamond core drilling program.

#### **Grace South**

The Grace structure is a N-S trending conjugate structure that spays off the NW trending Mine Shear and appears to increase in grade with increased proximity to the Mine Shear. Drilling is targeting along strike to the south of Grace to test where the Grace structure transects the Granite/Greenstone contact, a major rheological contrast boundary and highly favourable for localised high-grade ore formation.

#### **Junction Target Area**

The Junction Target is the region where the Grace Lode and Mine Lode converge at depth beneath both the Youanmi Main Pit and historically mined high-grade Pollard Lode. The Junction Target presents a high priority target area that was not tested by past explorers with no effective historical drilling completed at depth, down plunge of mineralisation seen in the Pollard lodes. Pollard lodes were mined via a shallow underground in the 1930's with historical mine records indicating production of 260,000oz at 15 g/t Au mined grade.

#### **Link Target Area**

The Link Target is the region beneath the historically mined northern pits (United/Rebel/ Kathleen/ Kurrajong). The new exploration model shows this area is directly down plunge of high-grade shoots mined in the northern pits and underground Hill End Deeps mine. Little to no previous drilling has been completed in this area.

### Follow up 1m RC assay (Re-splits) return high grades at Link and Junction

Assay results from 1m re-sampling of 4m intervals from RC at Link and Junction returned substantially higher grades than the previously announced 4m composites (RXL ASX release dated 14 January 2021).

**RXRC350: 3m @ 8.4g/t Au from 43m.** New shallow high-grade zone in Granite identified north of United North Pit at Link (previously reported 8m @ 2.88g/t Au from 40m).

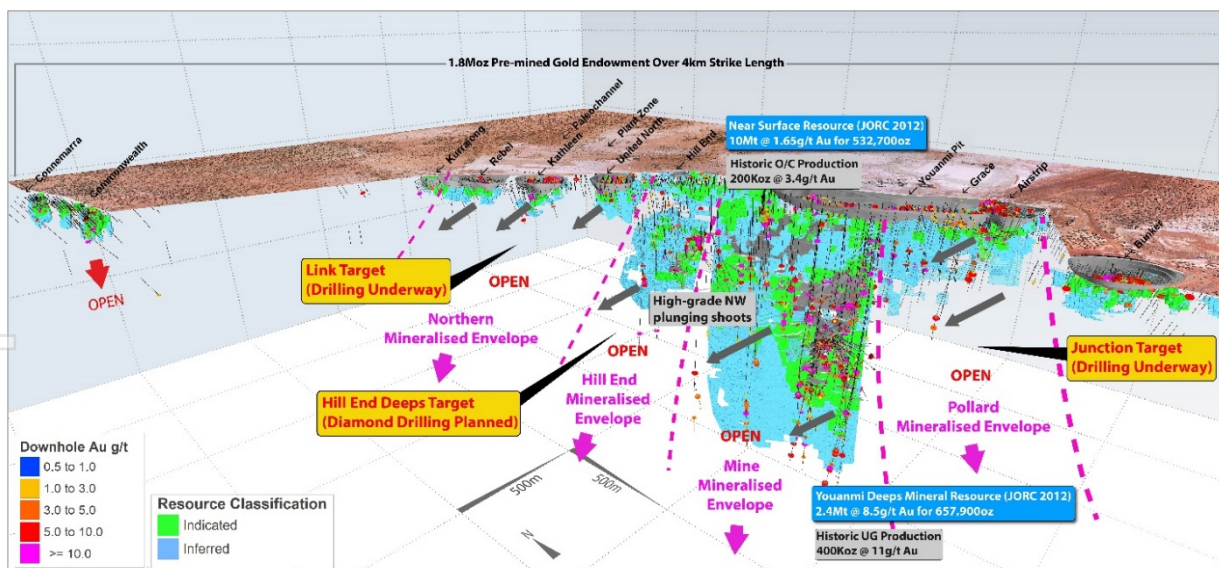
**RXRC351: 2m @ 8.8g/t Au from 222m.** New high-grade zone identified at Junction (previously reported 8m @ 2.59 g/t Au from 220m).

### Forward plan

The current drilling in near mine and resource extension areas will feed into mineral resource estimation and a subsequent definitive feasibility study for the project. Work for 2021 will include substantial RC and diamond drilling programs, metallurgical, hydrogeological, geotechnical and environmental studies to underpin an updated and optimised development plan.

Diamond drill targets in 2021 were not adequately tested due to poor contractor performance. The company has engaged a new drilling contractor and will resume diamond drilling in due course.

The Company looks forward to updating the market on the further results of ongoing drilling programs as results come to hand.



**Figure 1. Oblique view of the Youanmi Mine Area looking NE. Grey arrows show orientation of high grade shallow NW plunging shoots within steeply plunging mineralised envelopes (dashed magenta lines).**

For personal use only

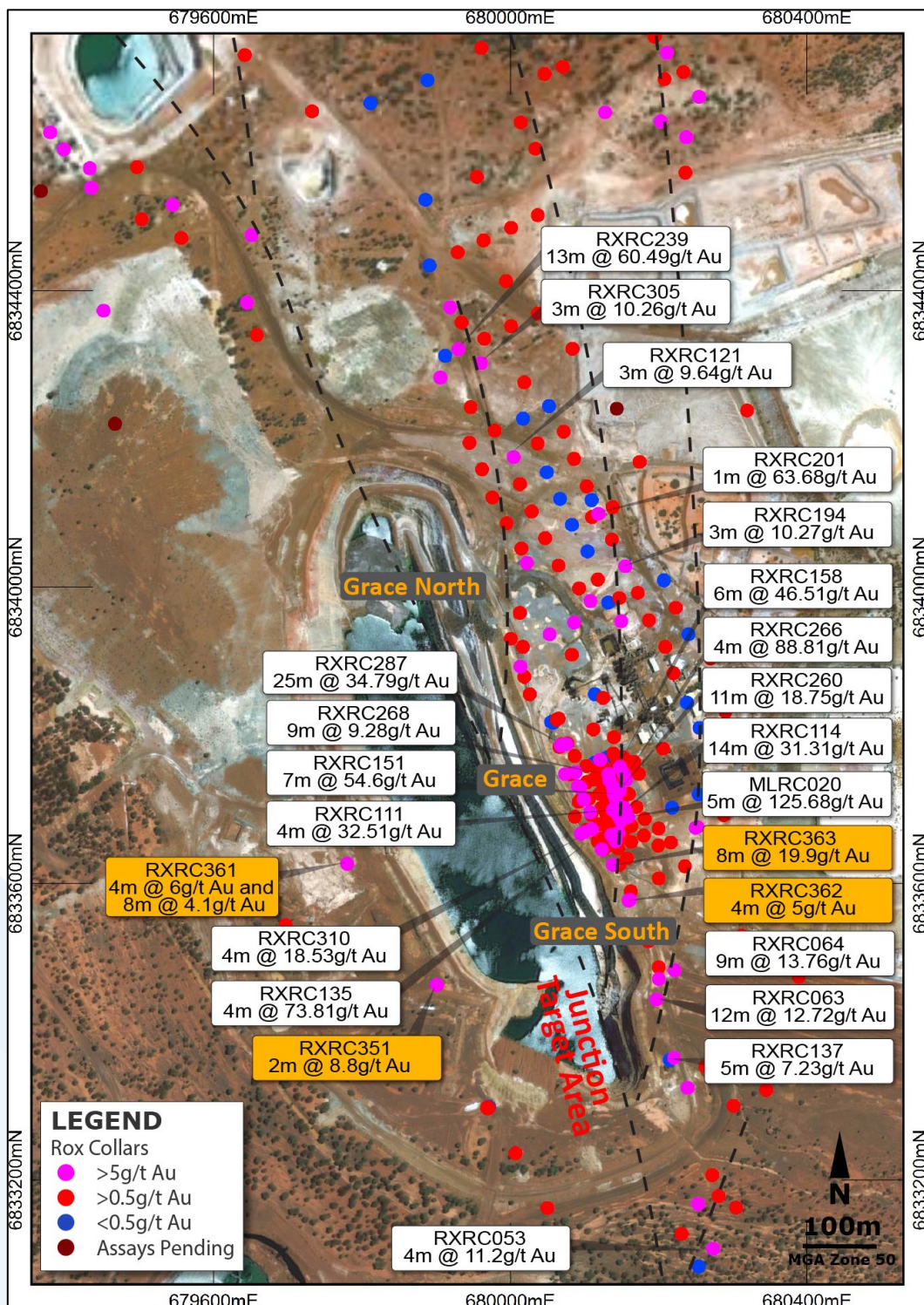


Figure 2. RC hole collars and intercepts.

For personal use only

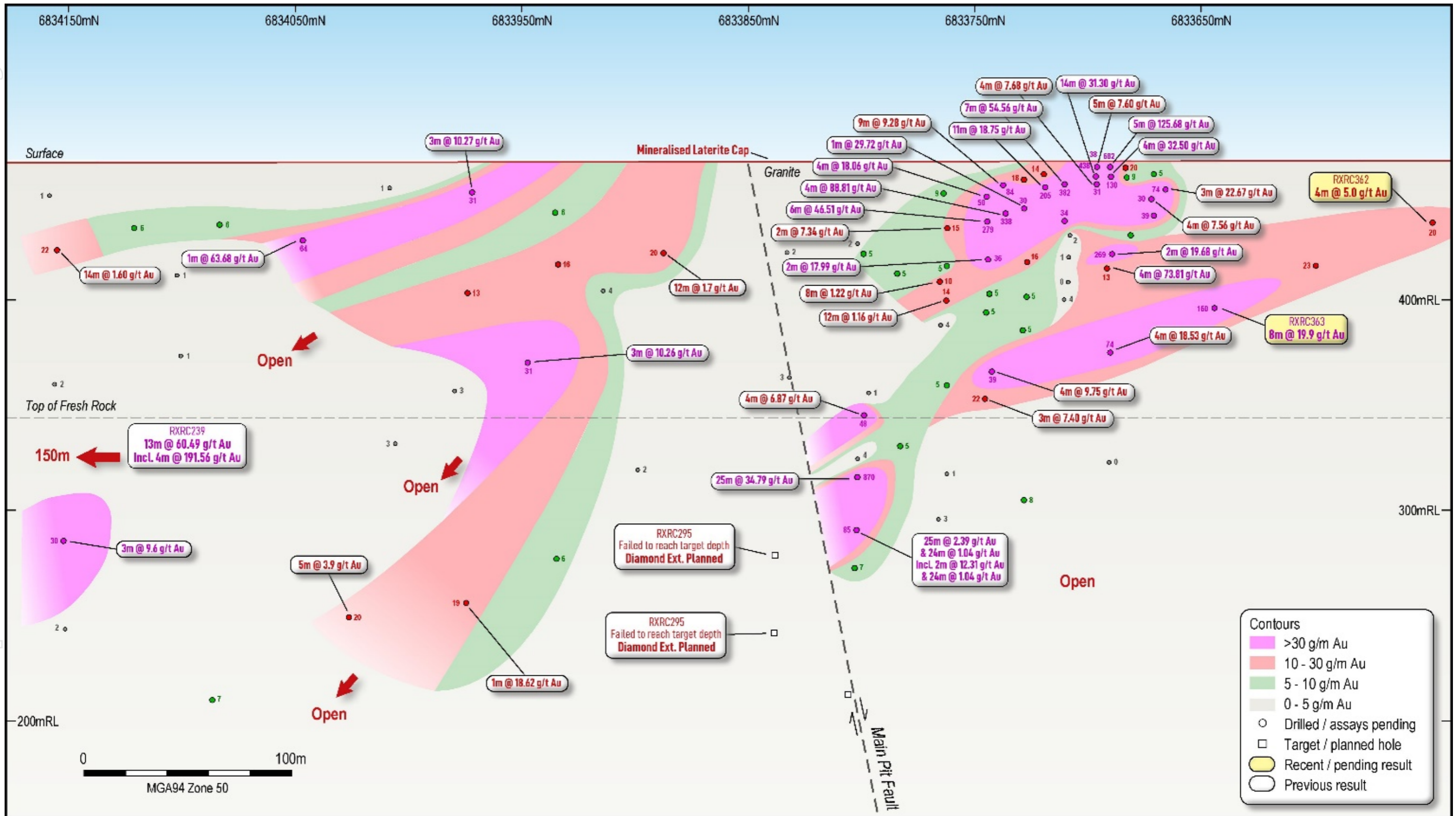


Figure 3 Grace Prospect Long Section – Extended 100m South

Authorised for release to ASX by Alex Passmore, Managing Director

**\*\*\* ENDS \*\*\***

**For more information:**

Alex Passmore  
Managing Director  
Rox Resources Limited  
Tel: +61 8 9226 0044  
admin@roxresources.com.au

Matt Hogan  
Managing Director  
Venus Metals Corporation Limited  
Tel: +61 8 9321 7541

For personal use only

**Table 1 – Significant Intersections**

Hole ID	Prospect	Drill type	From	to	Interval	Au g/t	Au g.m
RXRC350	Link	RC	43	46	3	8.4	25.2
RXRC351	Junction	RC	199	201	2	3.4	6.8
RXRC351	Junction	RC	222	224	2	8.8	17.6
RXRC361	Junction	RC	84	88	4	6	24
RXRC361	Junction	RC	112	120	8	4.1	32.8
RXRC362	Grace S	RC	40	44	4	5	20
RXRC362	Grace S	RC	224	233	9	1.1	9.9
RXRC363	Grace S	RC	68	76	8	19.9	159.2
Including		RC	68	72	4	38.3	153.2

**Table 2 - Collar Locations and Drilling Details**

Hole ID	Prospect	Drill Type	East	North	RL	Depth	Dip	Azi	Comments
RXRC350	Link	RC	679597	6834780	467	120	-60	90	
RXRC351	Junction	RC	679901	6833463	457	228	-55	65	
RXRC361	Junction	RC	679784	6833625	460	270	-55	65	
RXRC362	Grace S	RC	680161	6833578	459	264	-50	245	
RXRC363	Grace S	RC	680126	6833646	459	240	-55	245	
RXRC364	Grace S	RC	680100	6833669	459	234	-55	245	Assays pending
RXRC365	Link	RC	679293	6834367	466	270	-60	65	Assays pending
RXRC366	Link	RC	679467	6834220	467	270	-60	65	Assays pending
RXRC367	Link	RC	679365	6834533	467	200	-60	65	Assays pending
RXRC368	Link	RC	679326	6834620	468	200	-60	65	Assays pending
RXRC369	Link	RC	679317	6834663	471	200	-60	65	Assays pending
RXRC370	Link	RC	379310	6834699	473	180	-60	65	Assays pending
RXRC371	Link	RC	679197	6834683	469	240	-60	65	Assays pending
RXRC372	Link	RC	679045	6834844	469	250	-60	65	Assays pending
RXRC373	Link	RC	678985	6834883	469	240	-60	65	Assays pending
RXRC374	Link	RC	679164	6834893	469	150	-60	65	Assays pending
RXRC375	Link	RC	679158	6834913	469	146	-60	65	Assays pending
RXRC376	Junction	RC	679776	6833651	460	218	-50	65	Assays pending
RXRC377	Junction	RC	679754	6833674	460	240	-50	65	Assays pending
RXRC378	Junction	RC	679750	6833717	460	210	-50	65	Assays pending

For personal use only

## Competent Person Statements

### Exploration Results

The information in this report that relates to Data and Exploration Results is based on information compiled and reviewed by Mr Gregor Bennett a Competent Person who is a Member of the Australian Institute Geoscientists (AIG) and Exploration Manager at Rox Resources. Mr Bennett has sufficient experience relevant to the style of mineralisation and type of deposit under consideration and to the activity which he has undertaken to qualify as a Competent Person as defined in the 2012 Edition of the 'Australasian Code for the Reporting of Exploration Results, Mineral Resources and Ore Reserves'. Mr Bennett consents to the inclusion in the report of the matters based on his information in the form and context in which it appears.

Where reference is made to previous releases of exploration results in this announcement, the Company confirms that it is not aware of any new information or data that materially affects the information included in those announcements and all material assumptions and technical parameters underpinning the exploration results included in those announcements continue to apply and have not materially changed.

The information in this report that relates to previous Exploration Results, was either prepared and first disclosed under the JORC Code 2004 or under the JORC Code 2012 and was previously disclosed to ASX on 24 Sep, 7 Nov, 19 Nov 2019 and 6 May, 26 Jun, 23 Jun, 28 Jul, 1 Sep and 7 Oct 2020 or has been cross-referenced in the text to the date of original announcement to ASX. In the case of the 2004 JORC Code Exploration Results and Mineral Resources, they have not been updated to comply with the JORC Code 2012.

### Resource Statements

The information in this report that relates to gold Mineral Resources for the Youanmi Project was reported to the ASX on 17 April 2019 (JORC 2012). Rox confirms that it is not aware of any new information or data that materially affects the information included in the announcement of 17 April 2019, and that all material assumptions and technical parameters underpinning the estimates in the announcement of 17 April 2019 continue to apply and have not materially changed.

The information in this report that relates to gold Mineral Resources for the Mt Fisher project was reported to the ASX on 11 July 2018 (JORC 2012). Rox confirms that it is not aware of any new information or data that materially affects the information included in the announcement of 11 July 2018, and that all material assumptions and technical parameters underpinning the estimates in the announcement of 11 July 2018 continue to apply and have not materially changed.

The information in this report that relates to nickel Mineral Resources for the Fisher East project was reported to the ASX on 5 February 2016 (JORC 2012). Rox confirms that it is not aware of any new information or data that materially affects the information included in the announcement of 5 February 2016, and that all material assumptions and technical parameters underpinning the estimates in the announcement of 5 February 2016 continue to apply and have not materially changed.

The information in this report that relates to nickel Mineral Resources for the Collurabie project was reported to the ASX on 18 August 2017 (JORC 2012). Rox confirms that it is not aware of any new information or data that materially affects the information included in the announcement of 18 August 2017, and that all material assumptions and technical parameters underpinning the estimates in the announcement of 18 August 2017 continue to apply and have not materially changed.

### Forward-Looking Statements

This document may include forward-looking statements. Forward-looking statements include, but are not limited to, statements concerning Rox Resources Limited planned exploration program(s) and other statements that are not historical facts. When used in this document, the words such as "could," "plan," "estimate," "expect," "intend," "may", "potential," "should," and similar expressions are forward looking statements.



## About Rox Resources

Rox Resources Limited is an emerging Australian minerals exploration company. The company has a number of key assets at various levels of development with exposure to gold, nickel, copper and platinum group elements (PGE's). The 1.2Moz Youanmi Gold Project and the Fisher East Nickel Project (78kt Ni) being the most advanced projects with exploration ongoing at the Mt Fisher Gold Project and the Collurabbie Nickel-Copper-PGE Project.

### Youanmi Gold Project (Youanmi Gold Mine 70%, Regional JV's 50% earn-in)

The Youanmi Gold Mine is located 480 km to the northeast of Perth, Western Australia. The Youanmi Mining Centre has produced an estimated 667,000 oz of gold (at 5.47 g/t Au) since discovery in 1901 during three main periods: 1908 to 1921, 1937 to 1942, and 1987 to 1997.

The project is situated in the Youanmi Greenstone Belt, within the Southern Cross Province of the Archaean Yilgarn Craton in Western Australia. The structure of the Youanmi Project is dominated by the north-trending Youanmi Fault Zone. Most of the gold mineralisation seen at the project is hosted within north-northwest splays off the north-northeast trending Youanmi Fault.

### Fisher East Nickel Project (100%)

The Fisher East nickel project is located in the North Eastern Goldfields region of Western Australia and hosts several nickel sulphide deposits. The total project area is ~350km<sup>2</sup>.

Discovery of, and drilling at the Camelwood, Cannonball and Musket nickel prospects has defined a JORC 2012 Mineral Resource (ASX:RXL 5 February 2016) of 4.2Mt grading 1.9% Ni reported at 1.0% Ni cut-off (Indicated Mineral Resource: 3.7Mt grading 1.9% Ni, Inferred Mineral Resource: 0.5Mt grading 1.5% Ni) comprising massive and disseminated nickel sulphide mineralisation, and containing 78,000 tonnes of nickel. Higher grade mineralisation is present in all deposits (refer to ASX announcement above) and is still open at depth beneath each deposit. Additional nickel sulphide deposits continue to be discovered (e.g. Sabre) and these will add to the resource base. Exploration is continuing to define further zones of potential nickel sulphide mineralisation.

### Collurabbie Gold-Nickel Project (100%)

The Collurabbie project is located in the highly prospective North Eastern Goldfields region of Western Australia and is prospective for gold and nickel. The project area of ~123km<sup>2</sup> hosts the Olympia nickel sulphide deposit and a number of other prospects for nickel sulphide mineralisation. A JORC 2012 Inferred Mineral Resource of 573,000t grading 1.63% Ni, 1.19% Cu, 0.082% Co, 1.49g/t Pd, 0.85g/t Pt has been defined at Olympia (ASX: RXL 18 August 2017). The style of nickel sulphide mineralisation is different to that at Fisher East, with a significant copper and PGE component at Collurabbie, and has been compared to the Raglan nickel deposits in Canada (>1Mt contained nickel). In addition, there is potential for gold mineralisation, with several strong drilling intersections including 2m @ 2.4g/t Au from the Naxos prospect.

### Mt Fisher Gold Project (100%)

The Mt Fisher gold project is located in the North Eastern Goldfields region of Western Australia, adjacent to the Fisher East nickel project, and hosts several gold deposits. The total project area is ~220km<sup>2</sup>.

Drilling by Rox has defined numerous high-grade gold targets and a JORC 2012 Measured, Indicated and Inferred Mineral Resource (ASX:RXL 11 July 2018) of 1.0 million tonnes grading 2.7 g/t Au reported at a 0.8 g/t Au cut-off exists for 89,000 ounces of gold (Measured: 170,000 tonnes grading 4.1 g/t Au, Indicated: 220,000 tonnes grading 2.7 g/t Au, Inferred: 630,000 tonnes grading 2.3 g/t Au) aggregated over the Damsel, Moray Reef and Mt Fisher deposits.

## JORC Table 1 - Section 1 Data and Sampling Techniques

Criteria	JORC Code explanation	Commentary
<b>Sampling techniques</b>	<i>Nature and quality of sampling (e.g. cut channels, random chips, or specific specialised industry standard measurement tools appropriate to the minerals under investigation, such as down hole gamma sondes, or handheld XRF instruments, etc). These examples should not be taken as limiting the broad meaning of sampling.</i>	RC hole diameter was 5.5" (140 mm) reverse circulation percussion (RC). Sampling of RC holes was undertaken by collecting 1m cone split samples at intervals.  Drill holes were generally angled at -65° towards grid northeast (but see Table for individual hole dips and azimuths) to intersect geology as close to perpendicular as possible.
	<i>Include reference to measures taken to ensure sample representivity and the appropriate calibration of any measurement tools or systems used</i>	Drillhole locations were picked up by differential GPS. Logging of drill samples included lithology, weathering, texture, moisture and contamination (as applicable). Sampling protocols and QAQC are as per industry best practice procedures.
	<i>Aspects of the determination of mineralisation that are Material to the Public Report. In cases where 'industry standard' work has been done this would be relatively simple (e.g. 'reverse circulation drilling was used to obtain 1 m samples from which 3 kg was pulverised to produce a 30 g charge for fire assay'). In other cases more explanation may be required, such as where there is coarse gold that has inherent sampling problems. Unusual commodities or mineralisation types (e.g. submarine nodules) may warrant disclosure of detailed information</i>	RC drillholes were sampled on 1m intervals using a cone splitter.  Samples were sent to MinAnalytical in Perth, crushed to nominal <3mm, and 500g linear split into photon assay jars for Photon Gold analysis (PAAU2).  Selected check samples were sent to Intertek Genalysis in Perth, crushed to 10mm, dried and pulverised (total prep) in LM5 units (Some samples > 3kg were split) to produce a sub-sample. The pulps were analysed by 50g Fire Assay with ICP-OES (Intertek code FA25/OE).
<b>Drilling techniques</b>	<i>Drill type (e.g. core, reverse circulation, open-hole hammer, rotary air blast, auger, Bangka, sonic, etc) and details (e.g. core diameter, triple or standard tube, depth of diamond tails, face-sampling bit or other type, whether core is oriented and if so, by what method, etc).</i>	Drilling technique was Reverse Circulation (RC). The RC hole diameter was 140mm face sampling hammer. Hole depths reported range from 120m to 270m for RC.
<b>Drill sample recovery</b>	<i>Method of recording and assessing core and chip sample recoveries and results assessed</i>	RC drill recoveries were high (>90%).
	<i>Measures taken to maximise sample recovery and ensure representative nature of the samples</i>	Samples were visually checked for recovery, moisture and contamination and notes made in the logs.
	<i>Whether a relationship exists between sample recovery and grade and whether sample bias may have occurred due to preferential loss/gain of fine/coarse material.</i>	There is no observable relationship between recovery and grade, and therefore no sample bias.
<b>Logging</b>	<i>Whether core and chip samples have been geologically and geotechnically logged to a level of detail to support appropriate Mineral Resource estimation, mining studies and metallurgical studies.</i>	Detailed geological logs have been carried out on all RC holes, but no geotechnical data have been recorded (or is possible to be recorded due to the nature of the sample).  The geological data would be suitable for inclusion in a Mineral Resource estimate.
	<i>Whether logging is qualitative or quantitative in nature. Core (or costean, channel, etc) photography.</i>	Logging RC chips recorded lithology, mineralogy, mineralisation, weathering, colour, and other sample features. RC chips are stored in plastic RC chip trays.
	<i>The total length and percentage of the relevant intersections logged</i>	All holes were logged in full.

For personal use only

Criteria	JORC Code explanation	Commentary
<b>Sub-sampling techniques and sample preparation</b>	<i>If core, whether cut or sawn and whether quarter, half or all core taken.</i>	N/A
	<i>If non-core, whether riffled, tube sampled, rotary split, etc and whether sampled wet or dry.</i>	RC samples were collected on the drill rig using a cone splitter. If any mineralised samples were collected wet these were noted in the drill logs and database. AC samples were scooped directly from drill sample piles.
	<i>For all sample types, the nature, quality and appropriateness of the sample preparation technique.</i>	The sample preparation followed industry best practice. Photon samples were dried, crushed to nominal minus 3mm, and c. 500g linear split into photon assay jars for analysis. Fire Assay samples were dried, coarse crushing to ~10mm, followed by pulverisation of the entire sample in an LM5 or equivalent pulverising mill to a grind size of 85% passing 75 micron.
	<i>Quality control procedures adopted for all sub-sampling stages to maximise representivity of samples.</i>	Field QC procedures involve the use of Certified Reference Materials (CRM's) as assay standards, along with duplicates and blank samples. The insertion rate of these was approximately 1:20.
	<i>Measures taken to ensure that the sampling is representative of the in situ material collected, including for instance results for field duplicate/second-half sampling.</i>	For RC drilling field duplicates were taken on a routine basis at an approximate 1:20 ratio using the same sampling techniques (i.e. cone splitter) and inserted into the sample run.
	<i>Whether sample sizes are appropriate to the grain size of the material being sampled.</i>	The sample sizes are considered more than adequate to ensure that there are no particle size effects relating to the grain size of the mineralisation which lies in the percentage range.
<b>Quality of assay data and laboratory tests</b>	<i>The nature, quality and appropriateness of the assaying and laboratory procedures used and whether the technique is considered partial or total.</i>	The analytical technique involved Photon assay method on 500g sub-sample.  The analytical technique involved Fire Assay 50g for check samples.
	<i>For geophysical tools, spectrometers, handheld XRF instruments, etc, the parameters used in determining the analysis including instrument make and model, reading times, calibrations factors applied and their derivation, etc.</i>	No geophysical or portable analysis tools were used to determine assay values stored in the database.
	<i>Nature of quality control procedures adopted (e.g. standards, blanks, duplicates, external laboratory checks) and whether acceptable levels of accuracy (i.e. lack of bias) and precision have been established.</i>	Internal laboratory control procedures involve duplicate assaying of randomly selected assay pulps as well as internal laboratory standards. All of these data are reported to the Company and analysed for consistency and any discrepancies.
<b>Verification of sampling and assaying</b>	<i>The verification of significant intersections by either independent or alternative company personnel.</i>	Senior personnel from the Company have visually inspected mineralisation within significant intersections.
	<i>The use of twinned holes.</i>	Two twin RC holes have been completed at the Grace Prospect and confirm reliability of previous results.

Criteria	JORC Code explanation	Commentary
	<i>Documentation of primary data, data entry procedures, data verification, data storage (physical and electronic) protocols.</i>	Primary data was collected using a standard set of Excel templates on Toughbook laptop computers in the field. These data are transferred to Geobase Pty Ltd for data verification and loading into the database.
	<i>Discuss any adjustment to assay data.</i>	No adjustments or calibrations have been made to any assay data.
<b>Location of data points</b>	<i>Accuracy and quality of surveys used to locate drillholes (collar and down-hole surveys), trenches, mine workings and other locations used in Mineral Resource estimation.</i>	Drill hole locations have been established using a field GPS unit.
	<i>Specification of the grid system used.</i>	The grid system is MGA_GDA94, zone 50 for easting, northing and RL.
	<i>Quality and adequacy of topographic control.</i>	The topography of the mined open pits is well defined by historic monthly survey pickups
<b>Data spacing and distribution</b>	<i>Data spacing for reporting of Exploration Results.</i>	RC drill hole spacing varies 40-200 metres between drill sections, with some areas at 40 metre drill section spacing. Down dip step-out distance varies 20-100 metres.
	<i>Whether the data spacing and distribution is sufficient to establish the degree of geological and grade continuity appropriate for the Mineral Resource and Ore Reserve estimation procedure(s) and classifications applied.</i>	Data spacing and distribution are sufficient to establish the degree of geological and grade continuity appropriate for JORC(2012) classifications applied.
	<i>Whether sample compositing has been applied.</i>	No sample compositing has occurred for diamond core drilling. Sample intervals are based on geological boundaries with even one metre samples between.  For RC samples, 1m samples through target zones were sent to the laboratory for analysis. The remainder of the hole was sampled using 4m composite samples. For 4m composite samples >0.25g/t Au, 1m samples were collected and sent to the laboratory for analysis.
<b>Orientation of data in relation to geological structure</b>	<i>Whether the orientation of sampling achieves unbiased sampling of possible structures and the extent to which this is known, considering the deposit type.</i>	The mineralisation strikes generally NNW-SSE and dips to the west at approximately -50 degrees. The drill orientation was 065 and 245 degrees and -60 to -90 dip. Drilling is believed to be generally perpendicular to strike.
	<i>If the relationship between the drilling orientation and the orientation of key mineralised structures is considered to have introduced a sampling bias, this should be assessed and reported if material.</i>	No sampling bias is believed to have been introduced.
<b>Sample security</b>	<i>The measures taken to ensure sample security.</i>	Sample security is managed by the Company. After preparation in the field samples are packed into polyweave bags and despatched to the laboratory. For a large number of samples these bags were transported by the Company directly to the assay laboratory. In some cases the sample were delivered by a transport contractor the assay laboratory. The assay laboratory audits the samples on arrival and reports any discrepancies back to the Company. No such discrepancies occurred.
<b>Audits or reviews</b>	<i>The results of any audits or reviews of sampling techniques and data.</i>	No audits have yet been completed.

**JORC Table 1 - Section 2 Reporting of Exploration Results**

Criteria	JORC Code explanation	Commentary
<p><b>Mineral tenement and land tenure status</b></p>	<p><i>Type, reference name/number, location and ownership including agreements or material issues with third parties such as joint ventures, partnerships, overriding royalties, native title interests, historical sites, wilderness or national park and environmental settings.</i></p> <hr/> <p><i>The security of the tenure held at the time of reporting along with any known impediments to obtaining a licence to operate in the area.</i></p>	<p>Rox Resources Ltd is in a Joint Venture Agreement with Venus Metals Corporation Ltd under which it has a 70% interest in the Youanmi Gold Mine Joint Venture (OYG Joint Venture). Tenements in the JV consist of the following mining leases: M 57s /10, 51,76,97,109, 135, 160A, 164, 165, 166 and 167.</p> <hr/> <p>The tenement is in good standing and no known impediments exist.</p>
<p><b>Exploration done by other parties</b></p>	<p><i>Acknowledgment and appraisal of exploration by other parties.</i></p>	<p>Significant previous exploration has been carried out throughout the project by various companies, including AC/RAB, RC drilling and diamond drilling 1971-1973 WMC: RAB, RC and surface diamond drilling 1976 Newmont: 10 surface diamond drillholes (predominantly targeting base metals). 1980-1986 BHP: RAB, RC and surface diamond drilling (predominantly targeting base metals). 1986-1993 Eastmet: RAB, RC and surface diamond drilling. 1993-1997 Goldmines of Australia: RAB, RC and surface diamond drilling. Underground mining and associated underground diamond drilling. 2000-2003 Aquila Resources Ltd: Shallow RAB and RC drilling 2004-2005 Goldcrest Resources Ltd: Shallow RAB and RC drilling; data validation. 2007- 2013 Apex Minerals NL: 9 diamond holes targeting extensions to the Youanmi deeps resource.</p>

For personal use only

Criteria	JORC Code explanation	Commentary
<b>Geology</b>	<p><i>Deposit type, geological setting and style of mineralisation.</i></p>	<p>The Youanmi Project straddles a 40km strike length of the Youanmi Greenstone Belt, lying within the Southern Cross Province of the Archaean Yilgarn Craton in Western Australia. The greenstone belt is approximately 80km long and 25km wide, and incorporates an arcuate, north-trending major crustal structure termed the Youanmi Fault Zone. This structure separates two discordant greenstone terrains, with the stratigraphy to the west characterised by a series of weakly deformed, layered mafic complexes (Windimurra, Black Range, Youanmi and Barrambie) enveloped by strongly deformed, north-northeast trending greenstones. Gold mineralisation is developed semi-continuously in shear zones over a strike length of 2,300m along the western margin of the Youanmi granite.</p> <p>The Youanmi gold lodes are invariably associated with a high pyrite and arsenopyrite content and the primary ore is partially to totally refractory.</p> <p>There are a series of major fault systems cutting through the Youanmi trend mineralisation that have generated some significant off-sets.</p> <p>The Youanmi Deeps project area is subdivided into three main areas or fault blocks by cross-cutting steep south-east trending faults; and these are named Pollard, Main, and Hill End from south to north respectively.</p> <p>Granite hosted gold mineralisation occurs at several sites, most notably Grace and the Plant Zone Prospects. Gold mineralization occurs as free particles within quartz-sericite altered granite shear zones.</p> <p>The Commonwealth-Connemarra mineralised trend is centred 4km northwest of the Youanmi plant. The geology comprises a sequence of folded mafic and felsic volcanic rocks intercalated with BIF and intruded by granite along the eastern margin. Gold mineralisation is developed over a 600m strike length, associated with a north trending and steeply west dipping shear zone that traverses the northwest trending succession.</p>
<b>Drill hole Information</b>	<p><i>A summary of all information material to the understanding of the exploration results including a tabulation of the following information for all Material drill holes:</i></p> <ul style="list-style-type: none"> <li>• <i>easting and northing of the drill hole collar</i></li> <li>• <i>elevation or RL (Reduced Level – elevation above sea level in metres) of the drill hole collar</i></li> <li>• <i>dip and azimuth of the hole</i></li> <li>• <i>down hole length and interception depth</i></li> <li>• <i>hole length.</i></li> </ul>	<p>Refer to drill results Table/s and the Notes attached thereto.</p>
<b>Data aggregation methods</b>	<p><i>In reporting Exploration Results, weighting averaging techniques, maximum and/or minimum grade truncations (e.g. cutting of high grades) and cut-off grades are usually Material and should be stated.</i></p> <p><i>Where aggregate intercepts incorporate short lengths of high-grade results and longer lengths of low-grade results, the procedure used for such aggregation should be stated and some typical examples of such aggregations should be shown in detail.</i></p>	<p>All reported assay intervals have been length weighted. No top cuts have been applied. A lower cut-off of 0.5g/t Au was applied for RC.</p> <p>Mineralisation over 0.5g/t Au has been included in aggregation of intervals for RC and diamond core.</p>

For personal use only

Criteria	JORC Code explanation	Commentary
	<i>The assumptions used for any reporting of metal equivalent values should be clearly stated.</i>	No metal equivalent values have been used or reported.
<b>Relationship between mineralisation widths and intercept lengths</b>	<p><i>These relationships are particularly important in the reporting of Exploration Results.</i></p> <p><i>If the geometry of the mineralisation with respect to the drill hole angle is known, its nature should be reported.</i></p> <p><i>If it is not known and only the down hole lengths are reported, there should be a clear statement to this effect (e.g. 'down hole length, true width not known').</i></p>	The mineralisation strikes generally NNW-SSE and dips to the west at approximately -50 degrees. The drill orientation was 065 and 245 degrees and -60 to -90 dip. Drilling is believed to be generally perpendicular to strike. Given the angle of the drill holes and the interpreted dip of the host rocks and mineralisation (see Figures in the text), reported intercepts approximate true width.
<b>Diagrams</b>	<i>Appropriate maps and sections (with scales) and tabulations of intercepts should be included for any significant discovery being reported. These should include, but not be limited to a plan view of drill hole collar locations and appropriate sectional views.</i>	Refer to Figures and Table in the text.
<b>Balanced reporting</b>	<i>Where comprehensive reporting of all Exploration Results is not practicable, representative reporting of both low and high grades and/or widths should be practiced to avoid misleading reporting of Exploration Results.</i>	Representative reporting of both low and high grades and widths is practiced.
<b>Other substantive exploration data</b>	<i>Other exploration data, if meaningful and material, should be reported including (but not limited to): geological observations; geophysical survey results; geochemical survey results; bulk samples – size and method of treatment; metallurgical test results; bulk density, groundwater, geotechnical and rock characteristics; potential deleterious or contaminating substances.</i>	All meaningful and material information has been included in the body of the announcement.
<b>Further work</b>	<p><i>The nature and scale of planned further work (e.g. tests for lateral extensions or depth extensions or large-scale step-out drilling).</i></p> <p><i>Diagrams clearly highlighting the areas of possible extensions, including the main geological interpretations and future drilling areas, provided this information is not commercially sensitive</i></p>	Further work (RC and diamond drilling) is justified to locate extensions to mineralisation both at depth and along strike.