

ASX Announcement



28 January 2021

QUARTERLY REPORT – QUARTER ENDED 31 DECEMBER 2020

Please find attached the Quarterly Activities Report and Appendix 5B for the three-month period ended 31 December 2020.

Yours faithfully,

Jess Oram
Executive Director & Chief Executive Officer
Cauldron Energy Limited

ABN

22 102 912 783

Address

Unit 47,
Level 1
1008 Wellington Street
WEST PERTH WA 6005

PO BOX 1024
West Leederville WA 6007

ASX Code

CXU

Securities on Issue

447,999,512 shares
6,833,395 Options (*exercise price: \$0.03; expiry 31 Dec 2021*)
16,666,666 Options (*exercise price: \$0.03; expiry 31 Mar 2022*)
10,000,000 Unlisted Options (*exercise: \$0.03; expiry 16-Sep-22*)
6,000,000 Unlisted Options (*exercise: \$0.05; expiry 16-Sep-23*)
9,000,000 Performance Rights (*expiring 10 August 2025*)

Board of Directors

Simon Youds
Non-Executive Chairman

Jess Oram
Executive Director & Chief Executive Officer

Qiu Derong
Non-executive Director

Judy Li
Non-executive Director

Chenchong Zhou
Non-executive Director

Michael Fry
Company Secretary

HIGHLIGHTS

EXPLORATION & PROJECTS

Blackwood Gold Project

During this Quarter

- Commenced community consultation process and met with environmental groups in Blackwood to prepare the operating framework for the proposed exploration drilling program;
- Fixed the gate at the portal of the Tyrconnel adit;
- Repaired the historic drains at the portal of the Tyrconnel adit to allow for drainage of trapped groundwater into appropriately designed sediment ponds;
- Completed a submission to Melbourne Water following their late assessment of our proposed work approval for the underground drilling program accessed through the Tyrconnel adit;
- Completed an Environmental Vegetation Study; and
- Finalised drill plans for Rogers Big Hill.

Future Activities

- The current proposed plan/timing of further work is as follows:
 - Approval for low ground disturbance drilling at Rogers Big Hill – by end of first quarter of CY2021;
 - Approval for underground exploration drilling of northern lodes – by end of second quarter of CY2021;
 - Drilling to be undertaken in accordance with approvals and rig availability – expected to commence during second quarter of CY2021; and
 - Develop drill targets at Yankee and Countess – during quarter of CY2021.

Background

- The Blackwood Goldfield project is located southeast of Daylesford, in the highly prospective Central Victorian Goldfields that surround Ballarat.
- The Blackwood Goldfield Project covers an area of about 24km² and secures the most significant portion of the historic Blackwood Goldfield.
- From 1864 to 1960 the Blackwood Goldfield produced about 218,000 ounces of gold¹.
- Vendor of Blackwood Goldfield Project has spent 25 years consolidating the leases of the project area, now providing a great opportunity for systematic exploration and development over the entire goldfield.
- Multiple high-priority targets identified with plans prepared for immediate testing.

WA Sands Project

During this Quarter

- In late December 2020, Cauldron announced the acquisition of a 100% ownership interest in a number of river sand leases located at the mouths of the Carnarvon, Onslow and Derby rivers in Western Australia, collectively covering an area of about 286 km².
- The acquisition is subject to various conditions precedent including shareholder approval.

Background

- Sand is the most consumed natural resource on the planet besides water and by far the largest globally mined commodity. It is estimated that over 50 million tonnes of aggregate (sand and gravel) is consumed annually².
- The demand for construction sand, found in the beds, banks and riverplains of rivers, as well as in lakes and on the seashore, is significant and likely to outstrip supply in years to come.

¹ **Source:** Report titled "The Gold Mines of Blackwood" prepared by Erik Norum, Consultant Geologist, August 2018

² **Source:** "Why the world is running out of Sand" BBC article dated 18 November 2019, author Vince Beiser

Yanrey Uranium Project

During this Quarter

- No activity. Work remains suspended pending a change in government support for mining of uranium in Western Australia.
- Uranium spot price finished the quarter marginally lower at US\$30.35 (30 September 2020: US\$30.98) and has since remained largely steady above the US\$30 level (*Source: Trading Economics*)

Background

- Yanrey is prospective for large sedimentary-hosted uranium deposits and is host to the Bennet Well Uranium Deposit.
- The Bennet Well Uranium Deposit is comprised of four spatially separate deposits; Bennet Well East, Bennet Well Central, Bennet Well South and Bennet Well Channel.
- The Mineral Resource (JORC 2012) estimate is:
 - Inferred Resource: 16.9 Mt at 335 ppm eU₃O₈ for total contained uranium-oxide of 12.5 Mlb (5,670 t) at 150 ppm cut-off;
 - Indicated Resource: 21.9 Mt at 375 ppm eU₃O₈ for total contained uranium-oxide of 18.1 Mlb (8,230 t) at 150 ppm cut-off;
 - total combined Mineral Resource: 38.9 Mt at 360 ppm eU₃O₈, for total contained uranium-oxide of 30.9 Mlb (13,990 t) at 150 ppm cut-off.
- Cauldron has not completed any work on the mineralisation since the Mineral Resource was published in 2015.
- The mineralisation at Bennet Well is a shallow accumulation of uranium hosted in unconsolidated sands close to surface (less than 100 m downhole depth) in Cretaceous sedimentary units of the Ashburton Embayment.

Project Generation

- Cauldron remains vigilant to new project opportunities that complement the Company's project portfolio, are value accretive and have the potential to provide early cash flow.
- Due to travel restrictions, considerable time and effort was expended in relation to new project opportunities principally in Western Australia.
- Shareholders will be informed of key developments if and when they occur.

CORPORATE

Placement of \$1.60 Million

- On 6 November 2020, Cauldron announced that it had completed a placement totalling \$1.60 million. Pursuant to the placement, 51,612,903 new fully paid ordinary shares were issued to sophisticated and professional investors at a price of \$0.031 (3.1 cents) per share (Placement).
- In addition, participants in the Placement were issued free attaching unlisted options exercisable on or before 30 November 2023, at an exercise price of \$0.05 (5 cents) (Options). The Options were issued on the basis of 1 Option for every 2 new Shares issued under the Placement.
- SixtyTwo Capital acted as Lead Manager to the Placement.
- Cauldron will use the funds primarily to fast-track exploration at the Company's Blackwood Gold Project in Victoria. Funds will also be applied to maintenance of the Company's Yanrey Uranium Project and for general working capital.

Cauldron Energy Ltd (**Cauldron** or the **Company**) is pleased to present its Quarterly Activities Report for the period ended 31 December 2020.

EXPLORATION ACTIVITIES: AUSTRALIA

In Australia, Cauldron holds a 51% joint venture interest in the Blackwood Gold Project located south-east of Daylesford, in the highly prospective Central Victorian Goldfields that surround Ballarat.

During the quarter Cauldron announced the acquisition of a 100% ownership interest in a number of river sand leases located at the mouths of the Carnarvon, Onslow and Derby rivers in Western Australia, collectively covering an area of ~286km². The acquisition is subject to various conditions precedent including shareholder approval. Refer ASX announcement dated 23 December 2020.

In addition, Cauldron owns the **Yanrey Project (Yanrey)** consisting of 12 granted exploration licences for a total project area of 1,270 km² in Western Australia.

Yanrey is prospective for large sedimentary-hosted uranium deposits and is host to the Bennet Well Uranium Deposit.

BLACKWOOD GOLD PROJECT

From 1864 to 1960 the Blackwood Goldfield produced about 218,000 ounces of gold from orogenic gold sources (199,000 ounces) and from placer sources (19,000 ounces).³ Gold was won from surface down to a depth of 100 m below ground level, with very little mining activity below a depth of 150 m. The Sultan mine is the deepest in the goldfield with production levels at 230 m below ground surface and its shaft reaching 274 m, and still in pay.

Work Completed During Reporting Period

Cauldron was requested by Earth Resource Regulation of Victoria (ERR) to secure the door at the portal of the Tyrconnel adit, so as to restrict public access. To complete this work, Cauldron needed to rehabilitate the drains conveying ponded water away from the adit opening into appropriately designed sediment ponds.

During the quarter, Cauldron commenced its community consultation process. The company met with representatives of a local environmentalist group to exchange ideas of how to complete the exploration work.

The Company has lodged an application to conduct low impact exploration work at the Blackwood Goldfield Project with the ERR for approval before commencing activities. This planning document once approved will allow drilling in the Rogers Big Hill area (refer to ASX announcement dated 23/09/2020).

The Company continues to engage with all regulators (ERR, Department of Land Water and Planning (DELWP)) seeking approval for a proposed work plan that allows for underground drilling accessed through the Tyrconnel adit (refer to ASX announcement dated 31/08/2020). Melbourne Water made a very late submission on the proposed work plan for underground drilling from the Tyrconnel adit. Cauldron has responded to the concerns of Melbourne Water and await the process to run to completion before we commence the underground drilling work under that proposed work plan.

An Environmental Vegetation Study was completed during the quarter (refer ASX announcement dated 12 November 2020) and is a necessary component in the application of current and future work plans that we may want to present to regulators.

Also in the quarter, the Company focussed on preparation of drill plans for Rogers Big Hill which are now finalised.

In total, during the quarter, the Company expended \$280k on exploration related matters (excluding salaries). The major cost areas were Rents (Department of Mines in Western Australia): \$146k; Rates (Shire of Ashburton): \$35k; and Sands Project: \$25k.

³ **Source:** Report titled "The Gold Mines of Blackwood" prepared by Erik Norum, Consultant Geologist, August 2018

YANREY PROJECT

The Yanrey Project comprises a collection of 12 exploration tenements in northwest Western Australia, one of which secures the Bennet Well Uranium Deposit.

The mineralisation at Bennet Well is a shallow accumulation of uranium hosted in unconsolidated sands (less than 100 m downhole depth) in Cretaceous sedimentary units of the North Carnarvon Basin.

The project is prospective of sandstone-style uranium mineralisation capable of extraction by in-situ recovery mining techniques.

Work Completed During Reporting Period

Field work at Bennet Well is on hold until clarity on Western Australian uranium exploration policy is received from the Minister of Mines and Petroleum.

URANIUM PRICE INFORMATION

Uranium does not trade on an open market like other commodities. Buyers and sellers negotiate contracts privately. Prices are published by independent market consultants.

According to Trading Economics, the uranium spot price has fallen marginally from US\$30.98/lb (at 1 October 2020) to close at US\$30.35/lb (on 31 December 2020), and has since traded above the US\$30/lb level. (Source: *Trading Economics*).

Despite the pullback in price compared to twelve months prior, analysts remain positive about the price outlook in the medium term.

EXPLORATION ACTIVITIES: ARGENTINA

In Argentina, Cauldron controls, through its wholly owned subsidiary Cauldron Minerals Limited, 445 km² of exploration licence at its most advanced and 100% owned project, Rio Colorado, in Catamarca. The project is prospective for copper and silver of the globally significant stratabound sedimentary-hosted copper style of deposit. No work was completed at the Rio Colorado project during the quarter, and the Company is seeking to reduce its activities in Argentina.

PROJECT GENERATION

As a direct result of the current state government of Western Australia being opposed to uranium mining in Western Australia, field operations at the Yanrey Project have been suspended. As a consequence, over the past twelve months, considerable effort and resources have been directed at seeking advanced exploration projects in commodities other than uranium, to diversify the company's project portfolio.

Despite the acquisitions, and a relatively complete and diverse range of projects, Cauldron will remain vigilant to new project opportunities that complement the Company's project portfolio, are value accretive and have the potential to provide early cash flow.

CORPORATE

Placement of \$1.60 Million

On 6 November 2020, Cauldron announced that it had completed a placement totalling \$1.60 million. Pursuant to the placement, 51,612,903 new fully paid ordinary shares were issued to sophisticated and professional investors at a price of \$0.031 (3.1 cents) per share (Placement).

In addition, participants in the Placement were issued free attaching unlisted options exercisable on or before 30 November 2023, at an exercise price of \$0.05 (5 cents) (Options). The Options were issued on the basis of 1 Option for every 2 new Shares issued under the Placement.

SixtyTwo Capital acted as Lead Manager to the Placement.

Cauldron will use the funds primarily to fast-track exploration at the Company's Blackwood Gold Project in Victoria. Funds will also be applied to maintenance of the Company's Yanrey Uranium Project (existing mineral resource in situ – 38.9 Mt @ 360 ppm eU308 for 30.9 Mlb of contained uranium oxide¹) and for general working capital.

Annual General Meeting

On 29 December 2020, Cauldron lodged its notice of annual general meeting to be held on 29 January 2021. The notice can be viewed on the Company's website (www.cauldronenergy.com.au), or on the ASX website at asx.com.au (ASX: CXU).

CHANGES IN OWNERSHIP INTERESTS OF MINERAL TENEMENTS

No tenements (including beneficial interests in tenements) were acquired, disposed or lapsed during the quarter.

SCHEDULE OF MINERAL TENEMENTS

Refer Appendix D.

RELATED PARTY PAYMENT INFORMATION

In accordance with the requirements of ASX Listing Rule 5.3.5 the Company advises that during the quarter ended 31 December 2020 the following payments were made to directors of the Company and their associates in respect to their directors' fees (inclusive of superannuation) and salary:

| | \$ |
|---|---------------|
| Non-executive Directors' fees | 12,000 |
| Executive Director's salary (inclusive of superannuation) | 58,309 |
| Total | 70,309 |

AUTHORISATION FOR RELEASE

This report has been authorised for release by the Company's Executive Director, Jess Oram.

End

For further information, visit www.cauldronenergy.com.au or contact:

Cauldron Energy Limited

Ph: (08) 6117 3860

APPENDIX A

Disclaimer

- This report has been prepared by Cauldron Energy Limited ("Company"). The material contained in this report is for information purposes only. This release is not an offer or invitation for subscription or purchase of, or a recommendation in relation to, securities in the Company and neither this release nor anything contained in it shall form the basis of any contract or commitment.
- This report may contain forward-looking statements. Forward-looking statements include, but are not limited to, statements concerning Cauldron Energy Limited's business plans, intentions, opportunities, expectations, capabilities and other statements that are not historical facts. Forward-looking statements include those containing such words as could-plan-target-estimate-forecast-anticipate-indicate-expect-intend-may-potential-should or similar expressions. Such forward-looking statements are not guarantees of future performance and involve known and unknown risks, uncertainties, assumptions and other important factors, many of which are beyond the control of the Company, and which could cause actual results to differ from those expressed in this report. Because actual results might differ materially to the information in this report, the Company does not make, and this report should not be relied upon as, any representation or warranty as to the accuracy, or reasonableness, of the underlying assumptions and uncertainties. Investors are cautioned to view all forward-looking statements with caution and to not place undue reliance on such statements.
- The report has been prepared by the Company based on information available to it, including information from third parties, and has not independently verified. No representation or warranty, express or implied, is made to the fairness, accuracy or completeness of the information or opinions contained in this report.
- The Company estimates its reserves and resources in accordance with the Australasian Code for Reporting of Identified Mineral Resources and Ore Reserves 2012 Edition ("JORC Code"), which governs such disclosures by companies listed on the Australian Securities Exchange.

Mineral Resource Estimates

- The information in this report that relates to Mineral Resources is extracted from a report released to the Australian Securities Exchange (ASX) on 17 December 2015 titled "Substantial Increase in Tonnes and Grade Confirms Bennet Well as Globally Significant ISR Project" and available to view at www.cauldronenergy.com.au and for which Competent Persons' consents were obtained. Each Competent Person's consent remains in place for subsequent releases by the Company of the same information in the same form and context, until the consent is withdrawn or replaced by a subsequent report and accompanying consent.
- The Company confirms that it is not aware of any new information or data that materially affects the information included in the original ASX announcement released on 17 December 2015 and, in the case of estimates of Mineral Resources, that all material assumptions and technical parameters underpinning the estimates in the original ASX announcement continue to apply and have not materially changed. The Company confirms that the form and context in which the Competent Persons' findings are presented have not been materially modified from the original ASX announcement.

APPENDIX B

Bennet Well Mineral Resource

A Mineral Resource (JORC 2012) for the mineralisation at Bennet Well was completed by Ravensgate Mining Industry Consultants (Ravensgate) in 2015 and is based on information compiled by Mr Jess Oram, Executive Director of Cauldron Energy and Mr Stephen Hyland, who was a Principal Consultant of Ravensgate. Mr Oram is a Member of the Australasian Institute of Geoscientists and Mr Hyland is a Fellow of the Australasian Institute of Mining and Metallurgy.

The mineralisation at Bennet Well is a shallow accumulation of uranium hosted in unconsolidated sands close to surface (less than 100 m downhole depth) in Cretaceous sedimentary units of the Ashburton Embayment.

The Bennet Well deposit is comprised of four spatially separate deposits; namely Bennet Well East, Bennet Well Central, Bennet Well South and Bennet Well Channel.

The Mineral Resource (JORC 2012) estimate is:

- Inferred Resource: 16.9 Mt at 335 ppm eU₃O₈ for total contained uranium-oxide of 12.5 Mlb (5,670 t) at 150 ppm cut-off;
- Indicated Resource: 21.9 Mt at 375 ppm eU₃O₈ for total contained uranium-oxide of 18.1 Mlb (8,230 t) at 150 ppm cut-off;
- total combined Mineral Resource: 38.9 Mt at 360 ppm eU₃O₈, for total contained uranium-oxide of 30.9 Mlb (13,990 t) at 150 ppm cut-off.

Table 1: Mineral Resource (JORC 2012) at various cut-off

| Deposit | Cutoff (ppm eU ₃ O ₈) | Deposit Mass (t) | Deposit Grade (ppm eU ₃ O ₈) | Mass U ₃ O ₈ (kg) | Mass U ₃ O ₈ (lbs) |
|--------------------------|---|-------------------|--|---|--|
| Bennet Well_Total | 125 | 39,207,000 | 355 | 13,920,000 | 30,700,000 |
| Bennet Well_Total | 150 | 38,871,000 | 360 | 13,990,000 | 30,900,000 |
| Bennet Well_Total | 175 | 36,205,000 | 375 | 13,580,000 | 29,900,000 |
| Bennet Well_Total | 200 | 34,205,000 | 385 | 13,170,000 | 29,000,000 |
| Bennet Well_Total | 250 | 26,484,000 | 430 | 11,390,000 | 25,100,000 |
| Bennet Well_Total | 300 | 19,310,000 | 490 | 9,460,000 | 20,900,000 |
| Bennet Well_Total | 400 | 10,157,000 | 620 | 6,300,000 | 13,900,000 |
| Bennet Well_Total | 500 | 6,494,000 | 715 | 4,640,000 | 10,200,000 |
| Bennet Well_Total | 800 | 1,206,000 | 1175 | 1,420,000 | 3,100,000 |

| Deposit | Cutoff (ppm U ₃ O ₈) | Deposit Mass (t) | Deposit Grade (ppm U ₃ O ₈) | Mass U ₃ O ₈ (kg) | Mass U ₃ O ₈ (lbs) |
|--------------------------|--|-------------------|---|---|--|
| BenWell_Indicated | 125 | 22,028,000 | 375 | 8,260,000 | 18,200,000 |
| BenWell_Indicated | 150 | 21,939,000 | 375 | 8,230,000 | 18,100,000 |
| BenWell_Indicated | 175 | 21,732,000 | 380 | 8,260,000 | 18,200,000 |
| BenWell_Indicated | 200 | 20,916,000 | 385 | 8,050,000 | 17,800,000 |
| BenWell_Indicated | 250 | 17,404,000 | 415 | 7,220,000 | 15,900,000 |
| BenWell_Indicated | 300 | 13,044,000 | 465 | 6,070,000 | 13,400,000 |
| BenWell_Indicated | 400 | 7,421,000 | 560 | 4,160,000 | 9,200,000 |
| BenWell_Indicated | 500 | 4,496,000 | 635 | 2,850,000 | 6,300,000 |
| BenWell_Indicated | 800 | 353,000 | 910 | 320,000 | 700,000 |

| Deposit | Cutoff (ppm U ₃ O ₈) | Deposit Mass (t) | Deposit Grade (ppm U ₃ O ₈) | Mass U ₃ O ₈ (kg) | Mass U ₃ O ₈ (lbs) |
|-------------------------|--|-------------------|---|---|--|
| BenWell_Inferred | 125 | 17,179,000 | 335 | 5,750,000 | 12,700,000 |
| BenWell_Inferred | 150 | 16,932,000 | 335 | 5,670,000 | 12,500,000 |
| BenWell_Inferred | 175 | 14,474,000 | 365 | 5,280,000 | 11,600,000 |
| BenWell_Inferred | 200 | 13,288,000 | 380 | 5,050,000 | 11,100,000 |
| BenWell_Inferred | 250 | 9,080,000 | 455 | 4,130,000 | 9,100,000 |
| BenWell_Inferred | 300 | 6,266,000 | 535 | 3,350,000 | 7,400,000 |
| BenWell_Inferred | 400 | 2,736,000 | 780 | 2,130,000 | 4,700,000 |
| BenWell_Inferred | 500 | 1,998,000 | 900 | 1,800,000 | 4,000,000 |
| BenWell_Inferred | 800 | 853,000 | 1285 | 1,100,000 | 2,400,000 |

Note: table shows rounded numbers therefore units may not convert nor sum exactly

APPENDIX C

Blackwood Gold Project

The Blackwood Gold Project comprises Exploration Licence (EL) 5479 covering an area of 24 km² located in central Victoria, 40 km east-northeast of Ballarat.

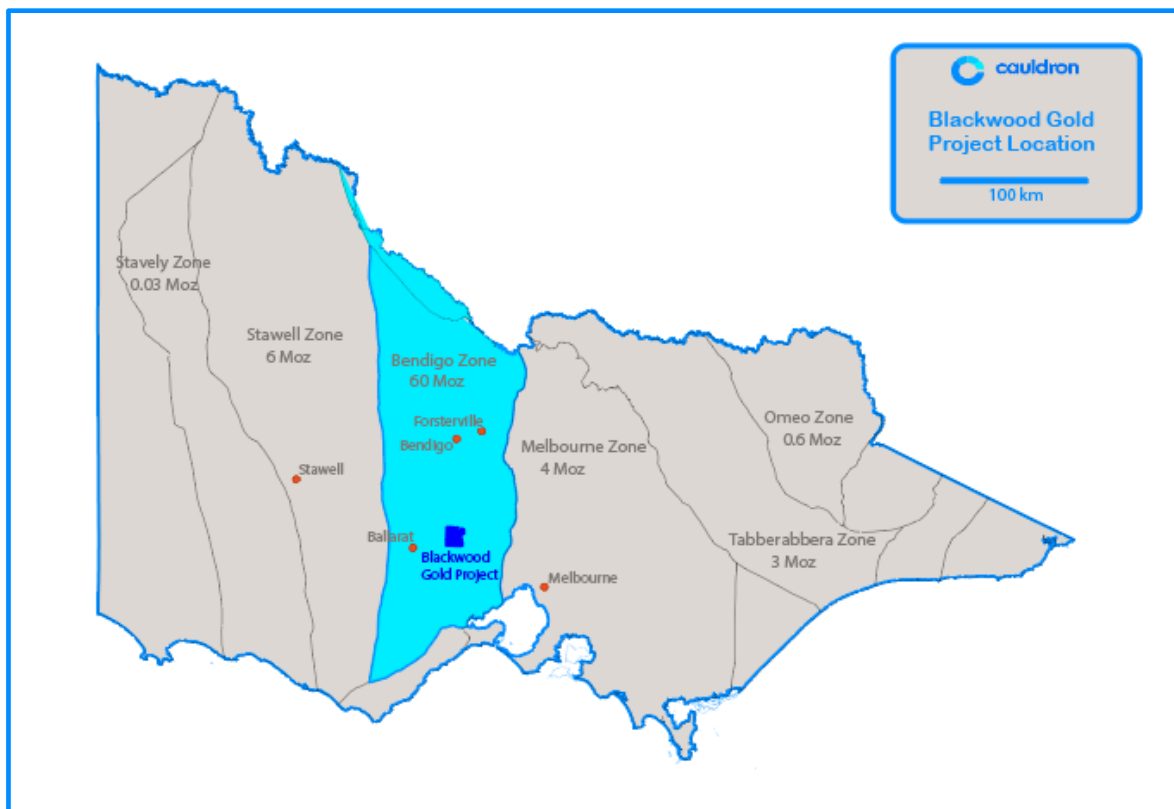


Figure 1; Blackwood Gold Project – Location Map; Victorian structural zone with historic gold production (modified after GeoVic3); Blackwood and Bullarto South tenements shown in dark blue.

The Exploration Licence is granted and in good standing with a licence expiry date of 23 March 2024.

Cauldron has an existing 51% joint venture ownership with stepped rights to earn-in to an initial level of 65% and then up to 80% ownership, following the achievement of certain milestones, as follows: CXU to earn 65% of the joint venture following achievement of a Mineral Resource (JORC 2012) containing at least 300,000 ounces of gold; CXU has a further right to earn-in to 80% ownership of the joint venture following the mining production of gold at a rate of at least 10,000 ounces per annum.

The Project is centred on the Sultan Mine which historically produced a little over 73,000 ounces of gold at an average grade of 28 g/t. In addition, the project contains in excess of 250 underground workings; with the largest known producers shown in Table 1, which follows.

Table 1: Gold production various reef sources in Blackwood Goldfield

| Mine | Worked Depth [m] | Ore Mined [t] | Gold Produced [oz] | Grade [g/t Au] |
|----------------|------------------|---------------|--------------------|----------------|
| North Sultan | 243 | | 620 | |
| Sultan | 231 | 82,000 | 73,310 | 28 |
| Sultana | 61 | | 1,530 | |
| Mounters | 134 | 19,070 | 9,910 | 16 |
| Homeward Bound | 20 | | 450 | |
| Bog Hill | 62 | | 3,180 | |
| Annie Laurie | 76 | | 270 | |
| Grace Edgerton | 62 | 1,090 | 2,850 | 80 |
| British Lion | | | 1,100 | |

Source: Report titled "The Gold Mines of Blackwood" prepared by Erik Norum, Consultant Geologist, August 2018

Note: total reported production in this table is over 93,000 ounces for the larger producers; over 190,000 ounces for field

Most mining activity on reef structures in the goldfield halted at shallow depths. Cessation of mining in many cases was not due to depletion of mineralisation but to other factors such as inability to cope with high ground water flows in the underground workings or inability to raise the capital for development work.

Geology and Mineralisation of the Victorian Goldfields

The Blackwood Gold Project is located in the highly prospective Golden Triangle.

The "Golden Triangle" is a colloquial term for a highly productive central portion the Victorian gold province, contains the Bendigo (>22.4 million ounces of gold production), Ballarat (>13.1 million ounces of gold production), Castlemaine (>4.2 million ounces of gold production) and Stawell goldfields (>2.6 million ounces of gold production)⁴.

The central portion of the Victorian gold province, one of the world's most productive and until recently, largely forgotten gold producing areas, accounting for more than 2% of world gold production and 30% of Australian gold production since 1850.

The geology of Victoria is split into twelve distinct zones, each having a distinct stratigraphic, structural and lithological style. Of these zones, the Ballarat (mustard colours), Melbourne (blue colours) and Stawell zones (mauve colours) are historically the most productive for gold (refer to Figure 3).

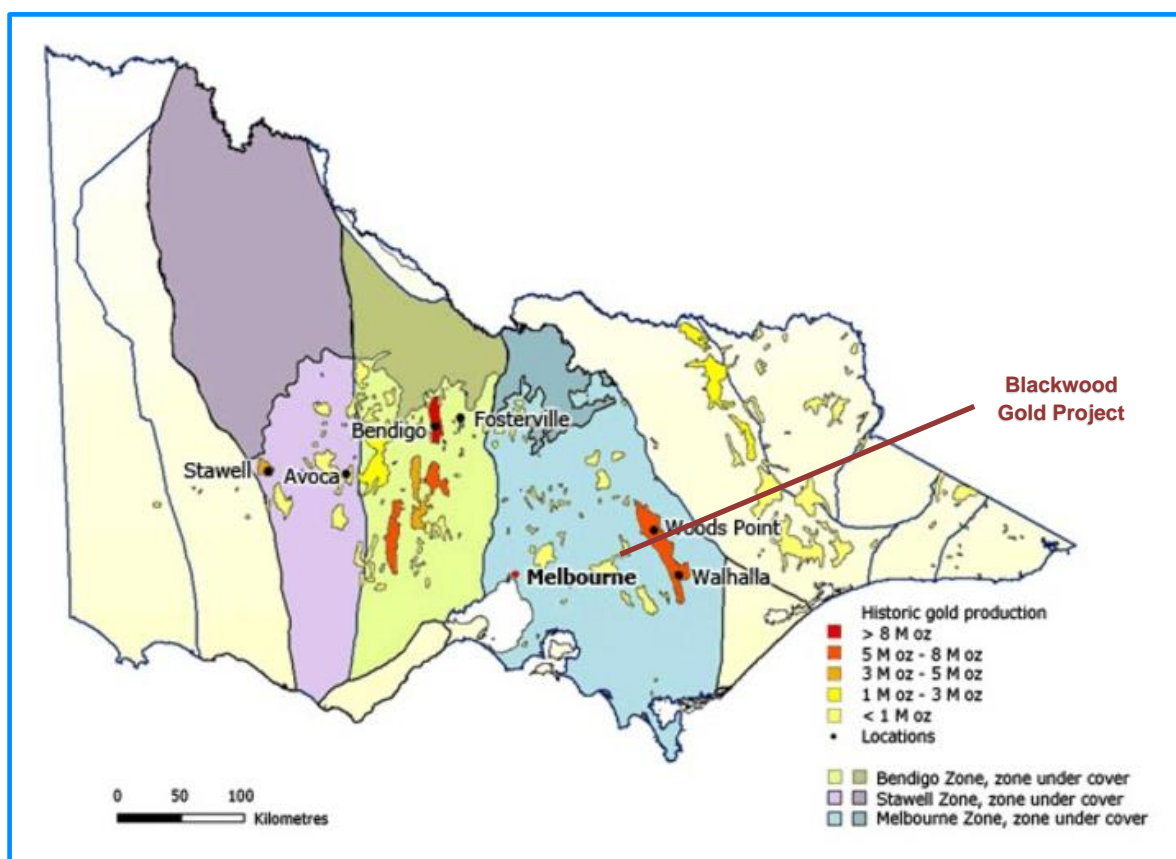


Figure 2; Victorian geological zones with goldfield coloured by production (GeoVic3)

Gold mineralisation is associated with quartz hosted by tightly folded monotonous fine-grained sedimentary rock sequences (interbedded sandstone and siltstone becoming slate). The folds have upright geometry with trends that are oriented north-south. As folding developed the sequence 'locked-up' causing differential tension in the deforming and shortening rock sequence. Faulting released the built-up stresses leading the development of zones of weakness having some specific geometry relative to the north-south trending folds. Of the range of fault sets that develop on this 'locking up' folded geometry, the high angle reverse fault has a major influence on the development of mineralisation.

The combination of folding and faulting of certain geometry allowed dilational openings which localised the deposition of quartz, gold and minor sulphide mineralisation (refer to Figure 4). This process

⁴ **Source:** Department of Earth Resources, Victoria website: www.earthresources.vic.gov.au/geology-exploration/minerals/metals/gold

occurred over the regional area causing much of the lode-style mineralisation now known in the Victoria gold province.

Three-dimensional modelling of the Barrys Reef workings (Turner 2019) including the eastern reefs of Annie Laurie and Grace Egerton, as well as the Sultana-Mounters group leads to the following conclusions:

1. Gold-quartz structures are formed by interaction of faults that are sub-parallel to bedding, but when encountering a change in bedding orientation will refract with possible dilation.

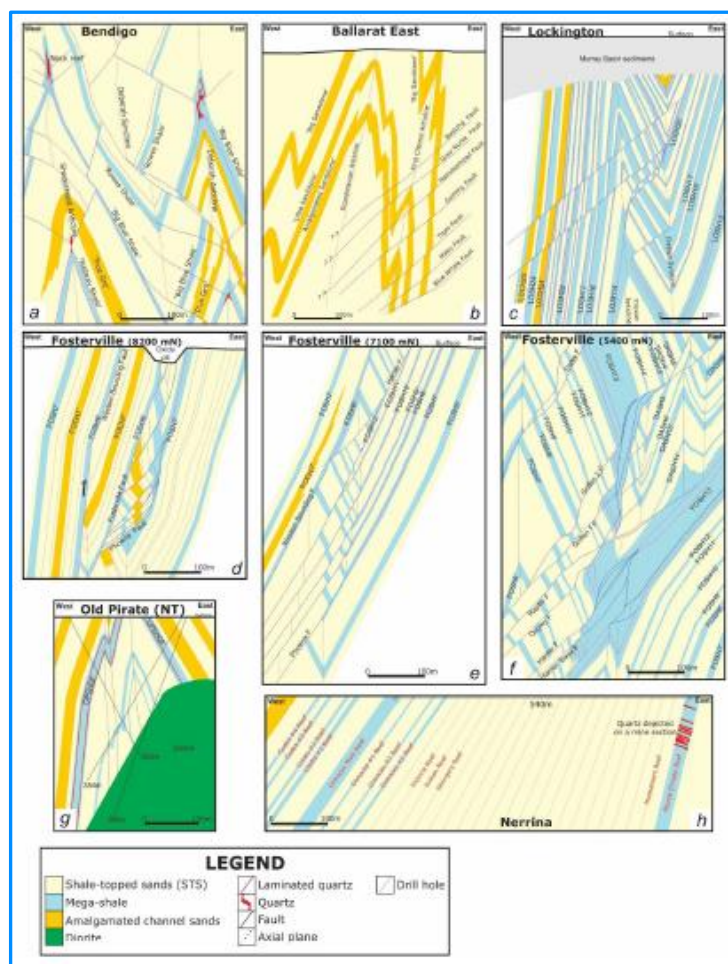


Figure 4; Typical fault intersections with folded sediments in Victoria (Boucher 2017)

2. Mineralised shoots may be controlled by the intersection of faults with bedding, some high-angle reverse faults refract as they pass through changes in competency of host rocks.
3. Reef structures are not always associated with anticlines or synclines.
4. Gold shoots plunge towards the south and dip towards the west; the vertical historic shafts markedly diverged from the shoots with increasing depth and quickly undershot the lode.

These learnings will be used in drill targeting lode structures after compiling underground mapping data and assays.

Historical Exploration and Mining Activities

The discovery of gold at Red Hill (near Blackwood) in 1855, led to a rush of prospectors to the goldfields. It is reported that at the peak of mining activity, there were about 13,000 miners along the Lerderberg River and its tributaries.

Alluvial mining quickly gave way to underground hard-rock mining of gold-rich quartz reef structures. More than 90% of the gold produced from the Blackwood goldfields came from the hard rock source.

The largely forgotten Blackwood Goldfield produced significant gold (220,000 ounces pre-1890 from near surface historic mining, with great potential for large tonnage high grade gold, down-plunge and along strike of workings, most less than 100 m below surface.

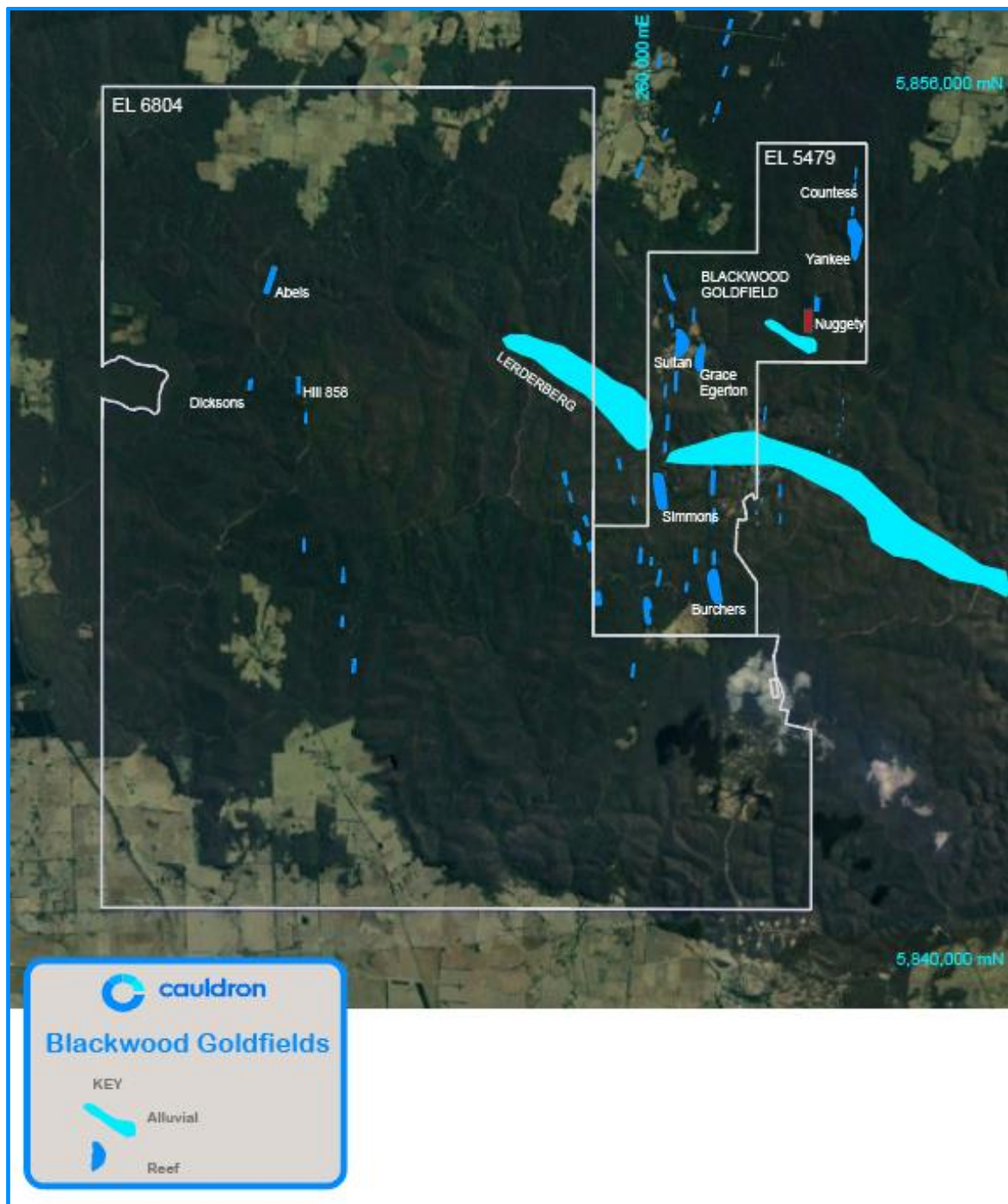


Figure 2; Prospect location map and mines of Blackwood Goldfields; blue points show location of mine sites; dark blue denotes location of gold reefs; light blue denotes location of alluvial gold field; image from Google Earth. EL5479 is 51% owned; EL6804 is under application and subject to heads of agreement to acquire 100%

There is a cluster of mines along parallel but stepped reef structures around the Sultan Mine, including Central, Mounters, Intermediate, Pioneer, Homeward Bound, Western, Edgerton, and Annie Laurie, refer Figure 2, 3 and 4. Often each of these lodes were owned and operated by different companies. The well-capitalised Sultan mine having the deepest workings effectively dewatered the workings of the adjacent mines. When pumping halted at Sultan the adjacent mines lacked the ability to keep their workings dry and ceased operations when their mines flooded. The operations ceased because of flooding as distinct to depletion of ore reserve.

Historical exploration work in the area of the exploration licences includes mineral resource definition drilling, completion of mineral resource estimates (not compliant with JORC 2012 reporting standards), mapping and soil sampling, costeaning and drilling.

Cauldron and independent researchers associated with the vendor has completed a desktop study with preliminary fieldwork and has identified highly prospective target areas for gold mineralisation in the Project area. There is potential for near-term production of gold ore from the mining lease at

Nuggety. In addition, there is strong potential for down-dip extensions to mineralisation at Sultan, Barrys Reef East and Yankee, with ability to expand the Target Range and define a Mineral Resource (JORC 2012) of considerable size.

Work Completed by Cauldron

Work to date has been primarily focussed on the compilation and review of historical data.

On 31 August 2020, the Company released preliminary results upon which it had determined that the Blackwood has the potential to host multiple high-grade gold systems and that there exists within the Project field a near contiguous 3.5km long trend of high-quality gold exploration targets.

Open file data⁵ for historic mining demonstrates records production through the 3.5 km mineralised trend (see Figure 5 below) totalling 152,000 oz, at between 16 to 23 g/t gold grade.

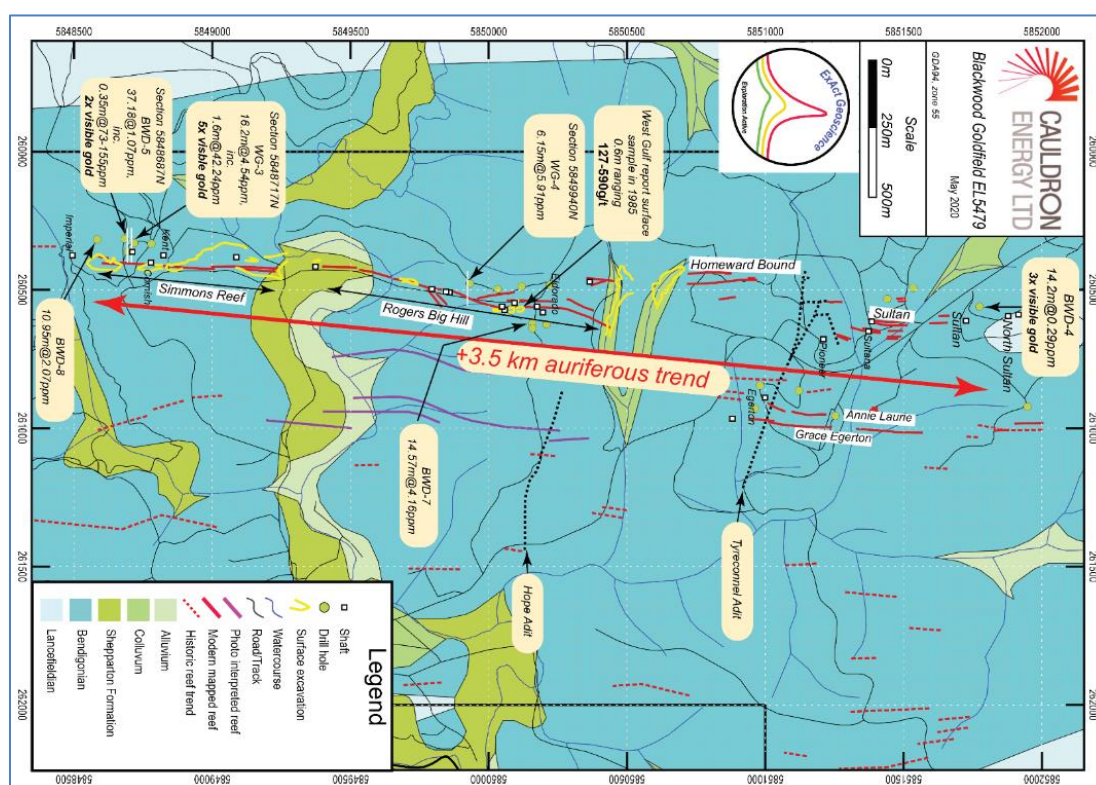


Figure 5; Mine scale geology and prospect map, significant drilling intercepts with historic mining activity

Nearly half the production was made from a single mine, a large proportion of the production grade was from reefs averaging over 20 g/t gold. Drilling and historic mine production records shows these high grades occur throughout the 3.5 km gold-rich trend.

Two listed companies of the past undertook significant exploration activity at The Blackwoods Gold Project; Endeavour Resources Ltd (or "Endeavour") and Western Gulf Oil and Mining Ltd. (or "Western Gulf").

Endeavour completed surface mapping, underground mapping and sampling, underground refurbishment of historic workings, and diamond drilling; all within the Sultan and Grace Egerton lines of workings and regional along trend exploration drilling.

High Grade Nuggety Gold

Many significant gold drilling intersections for both width and grade are revealed in the historic data. Several greater than 10 m downhole intersections (BWD04, BWD05, BWD07, BWD08, WG03, WG05, and WG09) exist, with many of these having geological descriptions noting the presence of visible gold (BWD04, BWD05, and WG03). It is also significant to note that some other visible gold intersections occur with returned assays of low-grade (less than 1 g/t Au).

⁵ GSV bulletin number 18, 1906.

Given that mineralisation is nuggety and because sampling was completed on half-core sample splits, we can say that below par assays are interesting and worth following up, especially if they are on-plunge to the defining shoot.

| Hole number | Length | Au assay (g/t) | Depth (m) | Explorer | Comment |
|-------------|--------|----------------|-----------|--------------|---|
| BWD02 | 1.27 | 1.37 | 102.20 | Endeavour | |
| BWD04 | 14.28 | 0.29 | 126.16 | Endeavour | Incl. 4x visible gold specs |
| BWD05 | 37.18 | 1.07 | 114.34 | Endeavour | Incl. 0.3 5m @ 73-155 g/t from 130.65 m and 2x visible gold specs |
| BWD07 | 3.65 | 2.89 | 64.89 | Endeavour | |
| BWD07 | 14.57 | 4.16 | 83.43 | Endeavour | Core loss (0.91 m) with prior interval |
| BWD08 | 10.95 | 2.07 | 132.79 | Endeavour | |
| BWD12 | 1.53 | 5.14 | 96.65 | Endeavour | |
| BWD14 | 7.50 | 1.59 | 187.50 | Endeavour | |
| DDH YC6 | 1.50 | 4.60 | 141.50 | Carpentaria | |
| WG01 | 1.60 | 2.40 | 103.45 | Western Gulf | |
| WG01 | 4.27 | 0.21 | 138.10 | Western Gulf | |
| WG02 | 0.55 | 8.99 | 93.40 | Western Gulf | |
| WG03 | 16.2 | 4.54 | 141.25 | Western Gulf | incl. 1.6 m @ 42.2 g/t and 3.8 m @ 1.98 g/t and 3x visible gold specs |
| WG04 | 6.15 | 5.90 | 142.5 | Western Gulf | Incl. 0.95 m @ 17.14 g/t |
| WG05 | 10.05 | 0.54 | 121.95 | Western Gulf | incl. peak value of 0.9m @ 3.84 g/t |
| WG07 | 4.80 | 1.17 | 109.00 | Western Gulf | |
| WG07 | 4.55 | 2.10 | 137.35 | Western Gulf | |
| WG08 | 6.95 | 0.67 | 105.55 | Western Gulf | |
| WG09 | 0.90 | 1.61 | N/A | Western Gulf | |
| WG09 | 10.35 | 0.56 | N/A | Western Gulf | |
| WG09 | 4.00 | 0.45 | N/A | Western Gulf | |

Table 1: Significant Blackwood diamond drilling intersections.

The upper expectation for this nuggety style of gold mineralisation is shown by BWD05 returning a drill intercept of 0.35 m @ 73-155 g/t, and WG03 of 1.6 m @ 42.2 g/t, and by WG04 of 0.95 m @ 17.14 g/t. These drilling results were matched with core having geological descriptions noting visible gold, except for WG05.

For coarse gold systems such as at Blackwood, it is often difficult to maintain assay accuracy and precision in samples assay due to the 'nuggety' behaviour of gold grains. The assay returns of BWD04, located north of the Sultan Mine, which shows low grade returns of 14.28 m @ 0.29 g/t Au (see Figure 6) but with four specs of visible gold, has the potential to be as significant as the high-grade drill intercepts referred above, and warrants follow-up.

High Quality Exploration Targets

Figure 6 and Figure 7 show along trend profile in the Simmons - Rogers Big Hill - Sultan trend (refer to Figure 5).

These sections are approximately 30 m apart and indicate the true width of mineralisation in the order of 10 m with bulk gold grade likely to be well above 1 ppm (the nugget affect).

Both sections were drilled by different explorers, with visible gold noted in the geological descriptions.

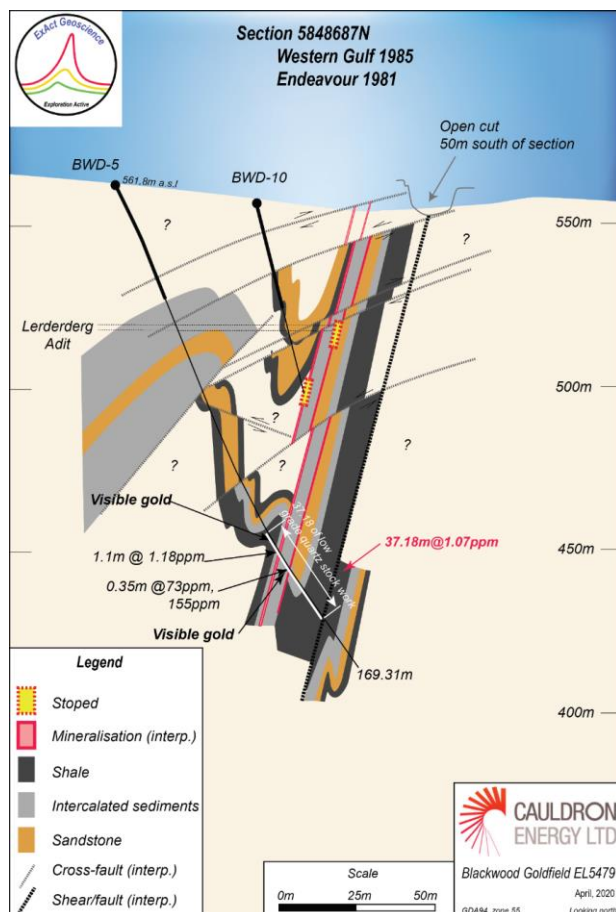


Figure 6: Interpreted cross-section for diamond drillhole BWD05

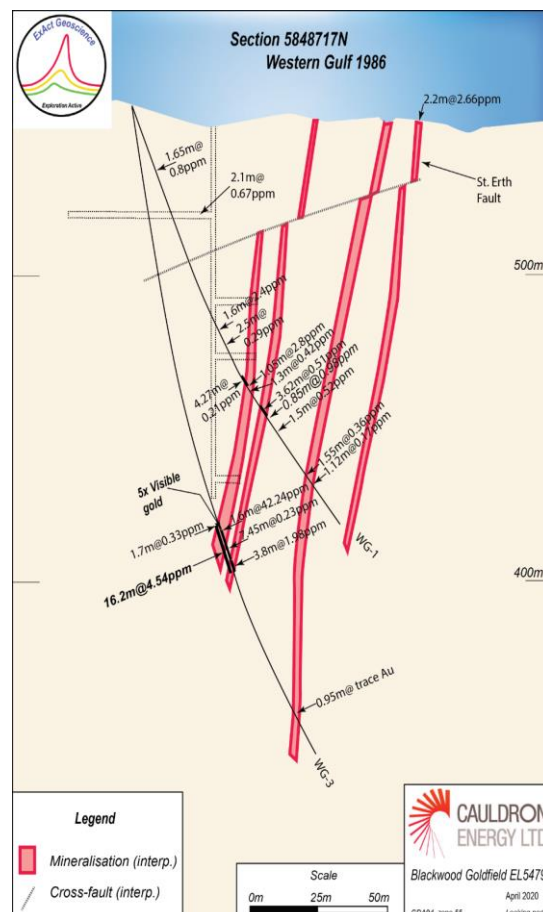


Figure 7: Interpreted cross-section for diamond drillhole WG03 and WG01

The section in Figure 7 demonstrates the Rogers - Big Hill – Simmons - Sultan mineralised trend contains the potential for other mineralised structures further to the east of the main lode structure. If this is the case drillholes BWD-5 and BWD-10 will have stopped short of the eastern structures leaving them untested and viable good quality targets. The interpretation of multiple lodes at Homeward Bound and Sultan (Figure 8) also provides for untested lode structures parallel to the main vein.

Overall, there appears to be significant walk up to exploration targets of the same trend, and little exploratory greenfields exploration has been undertaken on other historically mined trends to the east.

On 23 September 2020, the Company released further results of its data compilation and review, noting that it had identified that the central area of the Project (containing the Rogers Big Hill, Eldorado and Homeward Bound prospects) had a geological system like that of Sultan to the north, which produced a little over 73,000 ounces of gold at an average grade of 28 g/t during the 1860's. In addition, it noted that the near surface gold mineralisation at Rogers Big Hill is of bonanza grade and is projecting to depth.

In that release Cauldron noted that there is a parallel stack of reefs which dip west, plunge south. The reefs are open north and south along-strike and open down-plunge towards depth, refer to the long-section of Figure 8.

This Central area is referred to as Rogers Big Hill and comprises three historical mining zones namely; Rogers Big Hill, Eldorado and Homeward Bound, refer to Figure 8.

Prospectivity

Rogers Big Hill is a high-quality advanced exploration prospect evidenced by its high grade and potential for extension.

The potential exists to increase Mineral Resource because the area shows a geological pattern like the Sultan (refer to ASX announcement dated 31 August 2020) where multiple parallel lodes trend in a corridor toward the north and south, reminiscent of those found elsewhere in the Victorian goldfields.

The cross-section in Figure 8 demonstrates the parallel clustering of lodes.

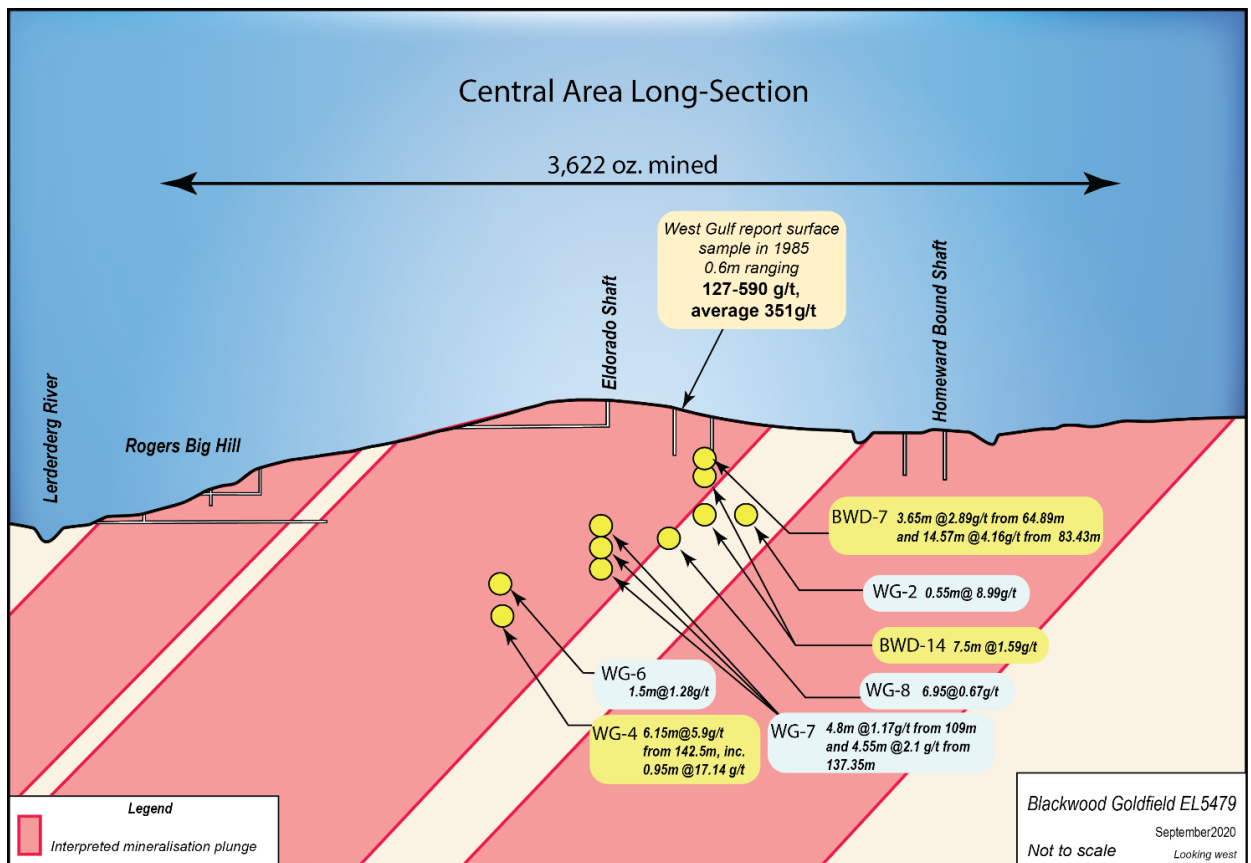


Figure 8: Long-section of Central prospect area looking west, yellow point shows drilling pierce point with grade

And the plan of Figure 9 shows the Homeward Bound line of lodes is open to the south into the Rogers Big Hill area. Given the evidence, the linear trend of these lodes can be interpreted to continue within 100 metres west of the Rogers Big Hill lodes.

This exploration target stands alongside the potential provided by the Sultan lines-of-lode to the north and Simmons lines-of-lode to the south.

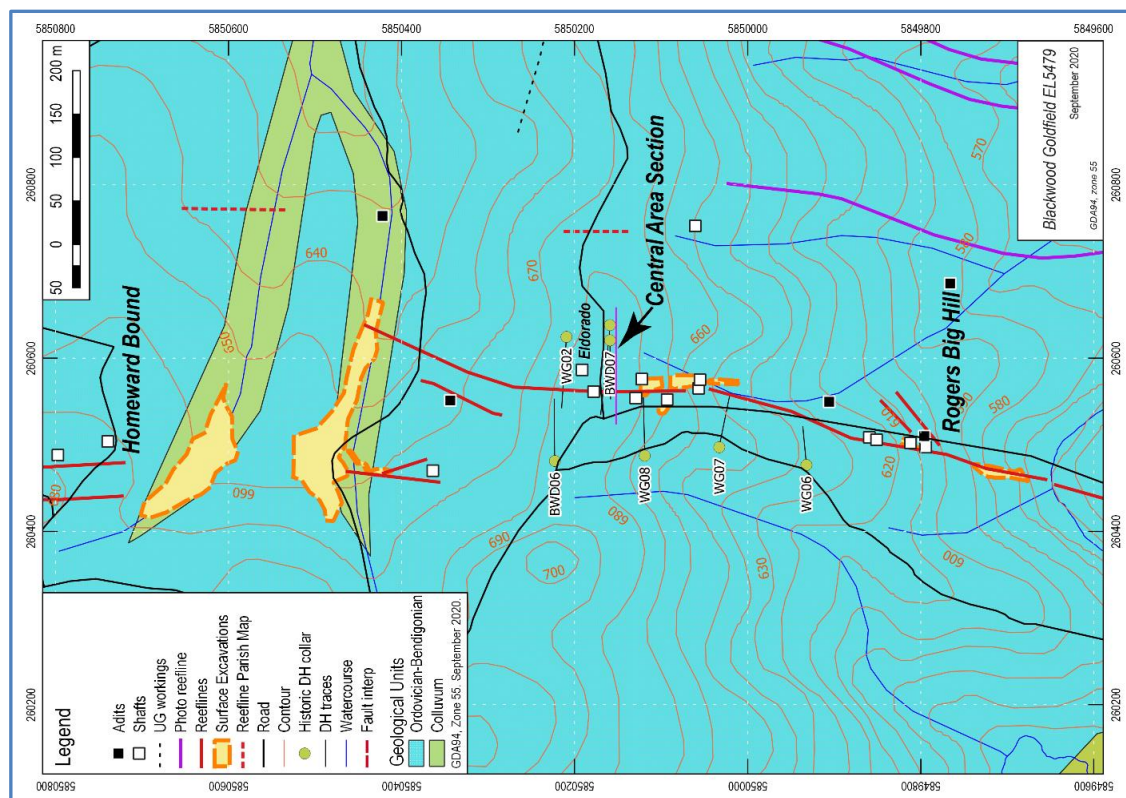


Figure 9: Plan view of Central prospect areas containing Cross-Section N5850158 (refer to Figure 4)

APPENDIX D

Schedule of Tenements

Mining tenements held at 30 September 2020, including tenements acquired, through grant, and disposed of during the quarter:

| Tenement reference | Project & Location | Acquired interest during the quarter | Disposed interest during the quarter | Interest at end of quarter |
|--------------------|---|--------------------------------------|--------------------------------------|----------------------------|
| E08/1489 | YANREY – WESTERN AUSTRALIA | - | - | 100% |
| E08/1490 | YANREY – WESTERN AUSTRALIA | - | - | 100% |
| E08/1493 | YANREY – WESTERN AUSTRALIA | - | - | 100% |
| E08/1501 | YANREY – WESTERN AUSTRALIA | - | - | 100% |
| E08/2017 | YANREY – WESTERN AUSTRALIA | - | - | 100% |
| E08/2081 | YANREY – WESTERN AUSTRALIA | - | - | 100% |
| E08/2205 | YANREY – WESTERN AUSTRALIA | - | - | 100% |
| E08/2385 | YANREY – WESTERN AUSTRALIA | - | - | 100% |
| E08/2386 | YANREY – WESTERN AUSTRALIA | - | - | 100% |
| E08/2387 | YANREY – WESTERN AUSTRALIA | - | - | 100% |
| E08/2774 | YANREY – WESTERN AUSTRALIA | - | - | 100% |
| E08/3088 | YANREY – WESTERN AUSTRALIA | - | - | 100% |
| 393/2010 | Catamarca, Argentina | - | - | 100% |
| 140/2007 | Rio Colorado Project - Catamarca, Argentina | - | - | 100% |
| 141/2007 | Rio Colorado Project - Catamarca, Argentina | - | - | 100% |
| 142/2007 | Rio Colorado Project - Catamarca, Argentina | - | - | 100% |
| 143/2007 | Rio Colorado Project - Catamarca, Argentina | - | - | 100% |
| 144/2007-581/2009 | Rio Colorado Project - Catamarca, Argentina | - | - | 100% |
| 176/1997 | Rio Colorado Project - Catamarca, Argentina | - | - | 100% |
| 232/2007 | Rio Colorado Project - Catamarca, Argentina | - | - | 100% |
| 270/1995 | Rio Colorado Project - Catamarca, Argentina | - | - | 100% |
| 271/1995 | Rio Colorado Project - Catamarca, Argentina | - | - | 100% |

ⁱ **Source:** ASX announcement dated 17 December 2015 titled “Substantial Increase in Tonnes and Grade Confirms Bennet Well as Globally Significant ISR Project”

Appendix 5B

Mining exploration entity or oil and gas exploration entity quarterly cash flow report

Name of entity

Cauldron Energy Limited

ABN

22 102 912 783

Quarter ended ("current quarter")

31 December 2020

| Consolidated statement of cash flows | Current quarter \$A'000 | Year to date (6 months) \$A'000 |
|---|----------------------------|---------------------------------------|
| 1. Cash flows from operating activities | | |
| 1.1 Receipts from customers | | |
| 1.2 Payments for | | |
| (a) exploration & evaluation | | |
| (b) development | | |
| (c) production | | |
| (d) staff costs | (106) | (162) |
| (e) administration and corporate costs | (156) | (224) |
| 1.3 Dividends received (see note 3) | | |
| 1.4 Interest received | | |
| 1.5 Interest and other costs of finance paid | | |
| 1.6 Income taxes paid | | |
| 1.7 Government grants and tax incentives | | |
| 1.8 Other (provide details if material) | | |
| 1.9 Net cash from / (used in) operating activities | (262) | (386) |
| 2. Cash flows from investing activities | | |
| 2.1 Payments to acquire or for: | | |
| (a) entities | | |
| (b) tenements | | |
| (c) property, plant and equipment | | |
| (d) exploration & evaluation | (280) | (424) |
| (e) investments | | |
| (f) other non-current assets | | |

Mining exploration entity or oil and gas exploration entity quarterly cash flow report

| Consolidated statement of cash flows | | Current quarter \$A'000 | Year to date (6 months) \$A'000 |
|--------------------------------------|---|----------------------------|---------------------------------------|
| 2.2 | Proceeds from the disposal of: | | |
| | (a) entities | | |
| | (b) tenements | | |
| | (c) property, plant and equipment | | |
| | (d) investments | | |
| | (e) other non-current assets | | |
| 2.3 | Cash flows from loans to other entities | | |
| 2.4 | Dividends received (see note 3) | | |
| 2.5 | Other (provide details if material) | | |
| 2.6 | Net cash from / (used in) investing activities | (280) | (424) |

| | | | |
|-----------|---|--------------|--------------|
| 3. | Cash flows from financing activities | | |
| 3.1 | Proceeds from issues of equity securities (excluding convertible debt securities) | 1,600 | 1,600 |
| 3.2 | Proceeds from issue of convertible debt securities | | |
| 3.3 | Proceeds from exercise of options | | |
| 3.4 | Transaction costs related to issues of equity securities or convertible debt securities | | |
| 3.5 | Proceeds from borrowings | | |
| 3.6 | Repayment of borrowings | | |
| 3.7 | Transaction costs related to loans and borrowings | | |
| 3.8 | Dividends paid | | |
| 3.9 | Other (provide details if material) | | |
| 3.10 | Net cash from / (used in) financing activities | 1,600 | 1,600 |

| | | | |
|-----------|--|-------|-------|
| 4. | Net increase / (decrease) in cash and cash equivalents for the period | | |
| 4.1 | Cash and cash equivalents at beginning of period | 128 | 396 |
| 4.2 | Net cash from / (used in) operating activities (item 1.9 above) | (262) | (386) |
| 4.3 | Net cash from / (used in) investing activities (item 2.6 above) | (280) | (424) |
| 4.4 | Net cash from / (used in) financing activities (item 3.10 above) | 1,600 | 1,600 |

Mining exploration entity or oil and gas exploration entity quarterly cash flow report

| Consolidated statement of cash flows | | Current quarter \$A'000 | Year to date (6 months) \$A'000 |
|--------------------------------------|---|----------------------------|------------------------------------|
| 4.5 | Effect of movement in exchange rates on cash held | - | - |
| 4.6 | Cash and cash equivalents at end of period | 1,186 | 1,186 |

| 5. | Reconciliation of cash and cash equivalents at the end of the quarter (as shown in the consolidated statement of cash flows) to the related items in the accounts | Current quarter \$A'000 | Previous quarter \$A'000 |
|-----|--|----------------------------|-----------------------------|
| 5.1 | Bank balances | 1,186 | 128 |
| 5.2 | Call deposits | | |
| 5.3 | Bank overdrafts | | |
| 5.4 | Other (provide details) | | |
| 5.5 | Cash and cash equivalents at end of quarter (should equal item 4.6 above) | 1,186 | 128 |

| 6. | Payments to related parties of the entity and their associates | Current quarter \$A'000 |
|---|---|----------------------------|
| 6.1 | Aggregate amount of payments to related parties and their associates included in item 1 | 70 |
| 6.2 | Aggregate amount of payments to related parties and their associates included in item 2 | |
| <i>Note: if any amounts are shown in items 6.1 or 6.2, your quarterly activity report must include a description of, and an explanation for, such payments.</i> | | |

The payments made to directors of the entity and their associates reported at 6.1 are inclusive of superannuation and were comprised as follows:

| | A\$'000 |
|-------------------------------|-----------|
| Non-executive Director's fees | 12 |
| Managing Director Fee | 58 |
| TOTAL | 70 |

Mining exploration entity or oil and gas exploration entity quarterly cash flow report

| 7. | Financing facilities <i>Note: the term "facility" includes all forms of financing arrangements available to the entity. Add notes as necessary for an understanding of the sources of finance available to the entity.</i> | Total facility amount at quarter end \$A'000 | Amount drawn at quarter end \$A'000 |
|-----|---|---|--|
| 7.1 | Loan facilities | | |
| 7.2 | Credit standby arrangements | | |
| 7.3 | Other (please specify) | | |
| 7.4 | Total financing facilities | - | - |
| 7.5 | Unused financing facilities available at quarter end | | - |
| 7.6 | Include in the box below a description of each facility above, including the lender, interest rate, maturity date and whether it is secured or unsecured. If any additional financing facilities have been entered into or are proposed to be entered into after quarter end, include a note providing details of those facilities as well. | | |
| | | | |

| 8. | Estimated cash available for future operating activities | \$A'000 |
|---|--|----------------|
| 8.1 | Net cash from / (used in) operating activities (item 1.9) | (262) |
| 8.2 | (Payments for exploration & evaluation classified as investing activities) (item 2.1(d)) | (280) |
| 8.3 | Total relevant outgoings (item 8.1 + item 8.2) | (542) |
| 8.4 | Cash and cash equivalents at quarter end (item 4.6) | 1,168 |
| 8.5 | Unused finance facilities available at quarter end (item 7.5) | - |
| 8.6 | Total available funding (item 8.4 + item 8.5) | 1,168 |
| 8.7 | Estimated quarters of funding available (item 8.6 divided by item 8.3) | 2.15 |
| <i>Note: if the entity has reported positive relevant outgoings (ie a net cash inflow) in item 8.3, answer item 8.7 as "N/A". Otherwise, a figure for the estimated quarters of funding available must be included in item 8.7.</i> | | |
| 8.8 | If item 8.7 is less than 2 quarters, please provide answers to the following questions: | |
| 8.8.1 | Does the entity expect that it will continue to have the current level of net operating cash flows for the time being and, if not, why not? | |
| Answer: N/a | | |
| 8.8.2 | Has the entity taken any steps, or does it propose to take any steps, to raise further cash to fund its operations and, if so, what are those steps and how likely does it believe that they will be successful? | |
| Answer: N/a | | |

Mining exploration entity or oil and gas exploration entity quarterly cash flow report

8.8.3 Does the entity expect to be able to continue its operations and to meet its business objectives and, if so, on what basis?

Answer: N/a

Note: where item 8.7 is less than 2 quarters, all of questions 8.8.1, 8.8.2 and 8.8.3 above must be answered.

Compliance statement

- 1 This statement has been prepared in accordance with accounting standards and policies which comply with Listing Rule 19.11A.
- 2 This statement gives a true and fair view of the matters disclosed.

28 JANUARY 2021

Date:

JESS ORAM (EXECUTIVE DIRECTOR)

Authorised by:
(Name of body or officer authorising release – see note 4)

Notes

1. This quarterly cash flow report and the accompanying activity report provide a basis for informing the market about the entity's activities for the past quarter, how they have been financed and the effect this has had on its cash position. An entity that wishes to disclose additional information over and above the minimum required under the Listing Rules is encouraged to do so.
2. If this quarterly cash flow report has been prepared in accordance with Australian Accounting Standards, the definitions in, and provisions of, *AASB 6: Exploration for and Evaluation of Mineral Resources* and *AASB 107: Statement of Cash Flows* apply to this report. If this quarterly cash flow report has been prepared in accordance with other accounting standards agreed by ASX pursuant to Listing Rule 19.11A, the corresponding equivalent standards apply to this report.
3. Dividends received may be classified either as cash flows from operating activities or cash flows from investing activities, depending on the accounting policy of the entity.
4. If this report has been authorised for release to the market by your board of directors, you can insert here: "By the board". If it has been authorised for release to the market by a committee of your board of directors, you can insert here: "By the [name of board committee – eg Audit and Risk Committee]". If it has been authorised for release to the market by a disclosure committee, you can insert here: "By the Disclosure Committee".
5. If this report has been authorised for release to the market by your board of directors and you wish to hold yourself out as complying with recommendation 4.2 of the ASX Corporate Governance Council's *Corporate Governance Principles and Recommendations*, the board should have received a declaration from its CEO and CFO that, in their opinion, the financial records of the entity have been properly maintained, that this report complies with the appropriate accounting standards and gives a true and fair view of the cash flows of the entity, and that their opinion has been formed on the basis of a sound system of risk management and internal control which is operating effectively.