

Montem Resources Limited

Canada's next steelmaking coal exporter



Montem Resources

INVESTOR PRESENTATION - DECEMBER 2020

Disclaimer

Disclaimer - Montem Resources Corp (“Montem” or “The Company”) has prepared this presentation based on the information available to it. No representation or warranty, expressed or implied, is made as to the fairness, accuracy, completeness or correctness of the information, opinions and conclusions contained in this presentation. To the maximum extent permitted by law, none of Montem, its directors, employees or agents, advisers, nor any other person accepts liability, including, without limitation, any liability arising from fault or negligence on the part of any of them or any other person, for any loss arising from the use of this presentation or its contents or otherwise arising in connection with it. This presentation contains general and background information about Montem’s activities current as at the date of the presentation and should not be considered to be comprehensive or to comprise all the information that an investor should consider when making an investment decision.

Forward looking statements –This presentation may contain forward looking statements that are subject to risk factors, including those associated with mining and production businesses. Forward-looking statements, including projections, forecasts and estimates, are provided as a general guide only and should not be relied on as an indication or guarantee of future performance and involve known and unknown risks, uncertainties and other factors, many of which are outside the control of Montem. Any prospective investor acknowledges that circumstances may change, and the contents of this presentation may become outdated as a result. Each prospective investor acknowledges that no audit or review has been undertaken by an independent third party of the assumptions, data, results, calculations and forecasts contained or referred to herein. Forecasts are inherently uncertain by nature and are subject to a range of qualifications and assumptions inherent in them. Those assumptions and qualifications are not generally contained in this presentation. The actual realised returns on any investment will depend on, among other things, the Company’s ability to raise funds, obtain permitting, future operating results, the value of the assets and market conditions, all of which may differ from the assumptions on which this presentation is based.

No investment advice -This presentation is not a financial product, investment advice or a recommendation to acquire Montem securities and has been prepared without taking into account the objectives, financial situation or needs of individuals. Before making an investment decision prospective investors should consider the appropriateness of the information having regard to their own objectives, financial situation and needs, and seek legal, taxation and financial advice appropriate to their jurisdiction and circumstances. Montem is not licensed to provide financial product advice in respect of its securities or any other financial products. Any investment in the Company should be regarded as being a speculative investment.

No offer - This presentation is not making any offer, inducement, solicitation or invitation or any kind and under no circumstances is it to be construed as a prospectus or advertisement. Without limiting the foregoing, this presentation is intended to be communicated only to such persons as Montem is legally able to communicate it and who are legally able to receive it in their jurisdiction of residence. If you are not such a person, please return the presentation to Montem immediately.

Information in this presentation remains subject to change without notice.

Montem - Capital Structure

Capital Structure (MR1.ax)

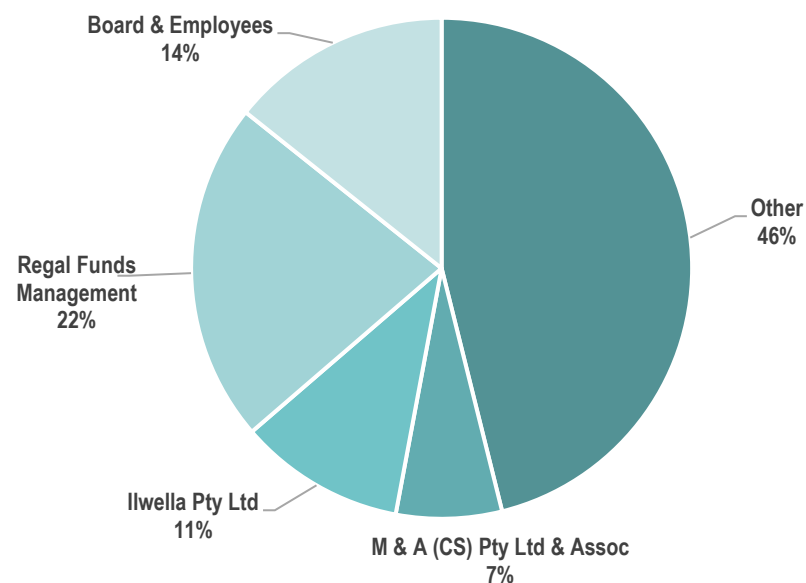
Ordinary Shares	202,626,811
Performance Rights	8,719,710
Options	6,315,133
Shares escrowed at IPO ¹	42,718,252
Share Price (01 Dec 2020)	\$0.25
Undiluted market capitalisation	A\$50,656,702
Cash (30 September 2020)	A\$7.07million

Share Price Performance



1. 42,718,252 shares, 6,767,898 Performance Rights and 3,792,897 Options are subject to escrow restrictions for terms between 12 and 24 months

Montem share ownership (at IPO)



Directors and Management



MARK LOCHTENBERG
Chairman

- Previously co-head of Glencore International AG's worldwide coal division



PETER DOYLE
Managing Director & Chief
Executive Officer

- 25 years coal industry experience
- Canada based



BOB BELL
Chief Commercial Officer

- Previously Chief Commercial Officer at Teck Coal
- 30+ years coal industry experience

Montem - Strategy

Tent Mountain Mine

Re-start mining at the Tent Mountain Mine (60Mt JORC)
Proven HCC, previously sold to Japanese steel mills
Planned production by 2022
Rail and port capacity secured

Chinook Project

Explore & develop multiple large open pit mines
Comparable tenure & coal quality to neighboring ATU's Elan Project and Teck's Elk Valley Complex

Greenfields

Explore greenfield opportunities to the north of Chinook including 4-Stack, Oldman and Isola
1.5Bt¹ exploration target across Montem's assets



JORC Resource and Reserve Table refer to Appendix

1. Mineral Resources have been estimated according to JORC 2012 standards. The potential quantity and grade of the Exploration Target is conceptual in nature and it is uncertain if further exploration will result in the estimation of a Mineral Resource. The Exploration Targets are conceptual in nature and there has been insufficient exploration carried out to define the relevant Coal Resource and are presented as a range to represent uncertainty in seam thickness, quality and location. The Exploration Target is not reported as part of any Mineral Resource or Ore Reserve.

Elk Valley & the Crowsnest Pass

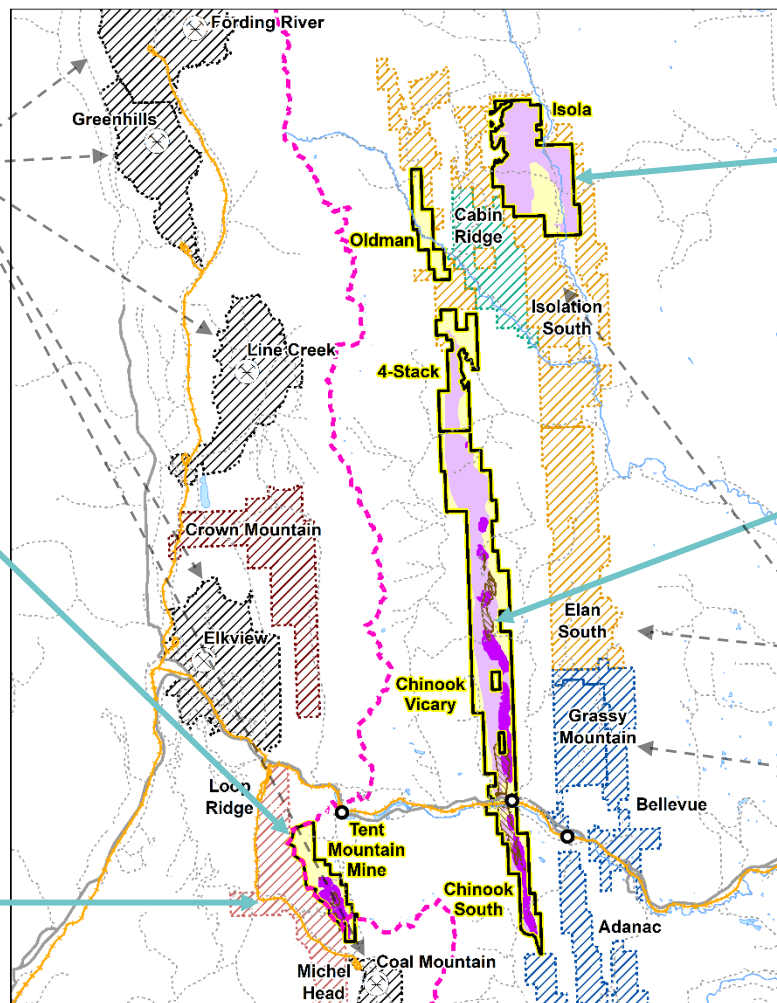
Teck Resources:
~25Mtpa HCC exports

Tent Mountain Mine:

- 1.1Mtpa for 14 years
- A\$65million EBITDA
- HCC sales 2022

Infrastructure:

- Rail; port; power; water secured



Isola Project:

- Long-term development potential

Chinook Project:

- Mid-term development

Atrium Coal:

Market Cap A\$150million

Hancock Prospecting:

Grassy Mountain A\$745million

1. Mineral Resources have been estimated according to JORC 2012 standards. The potential quantity and grade of the Exploration Target is conceptual in nature and it is uncertain if further exploration will result in the estimation of a Mineral Resource. The Exploration Targets are conceptual in nature and there has been insufficient exploration carried out to define the relevant Coal Resource and are presented as a range to represent uncertainty in seam thickness, quality and location. The Exploration Target is not reported as part of any Mineral Resource or Ore Reserve.

Tent Mountain Mine – Feasibility Study Results

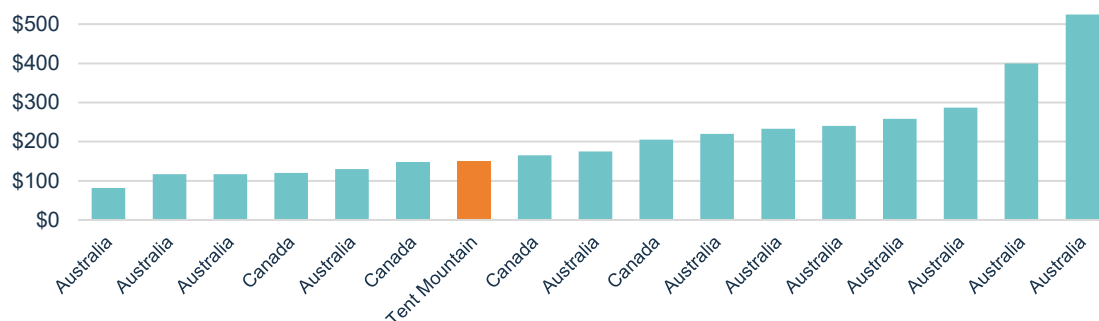
Near term production (2022), low risk re-start, port capacity secured

Tent Mountain Mine – Project Parameters

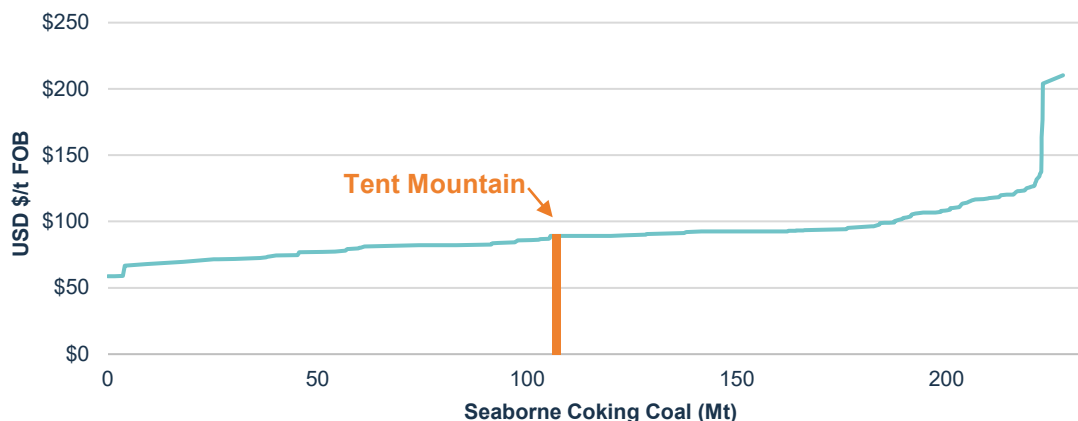
Coal Type	Tier 2 Hard coking coal
Resource (JORC, 2020)	60 Mt
Reserve – ROM	22 Mt
Reserve – Product	13 Mt
Washery Yield	60 %
Mining method	Open cut
First coal	Q1 2022
Production	1.1 Mtpa
Mine Life	14 years
Strip Ratio	8.8:1 (ROM basis)
Capital required	US\$168m
Operating cost	US\$ 88/t FOB
Project NPV (post tax) ¹	C\$129 million
IRR (post tax) ¹	17.3%

1. Based on US\$150 LT HCC Reference Price, 13% discount for Tent Mtn
CAD:USD of 0.75 AUD:USD of 0.72

Capital Intensity – Hard Coking Coal Projects (USD / tonne capacity)²



Seaborne Export HCC Cost Curve 2020³



2. Source: Wood Mackenzie Ltd, February 2020 dataset; Company disclosures; Montem management analysis

3. Source: Wood Mackenzie Ltd, February 2020 dataset; Tent Mountain FOB costs from 2020 DFS

Tent Mountain Mine

Over the past three years, Montem has significantly de-risked this project, completing pre-feasibility and definitive feasibility studies, and major permits are already granted

Exploration

- ✓ Completed drilling 7,000m, delineating 60Mt resources
- ✓ Confirmed quality: Tier 2 Hard Coking Coal (*13% discount to premium HCC*)

Permitting

- ✓ Mine permit and EPEA granted giving timeline advantage, de-risking the project
- ✓ Federal gov't do not require environmental review - only need Alberta licencing
- ✓ Applications for final permits, mineral surface lease, water act and coal conservation act licenses well advanced

Infrastructure

- ✓ Secured land for rail loadout (option agreement)
- ✓ Port capacity reserved
- ✓ Power supply, road access and water are available

Feasibility

- ✓ Definitive Feasibility Study completed, showing robust financial results
- ✓ Final engineering design underway

In progress

- Mine re-start application to be submitted: Q4 2020
- Pre-construction mine design finalisations: Q4 2020 – Q2 2021
- Preliminary construction earth works: H2 2021

Chinook Project – World Class Potential

4-Stack:

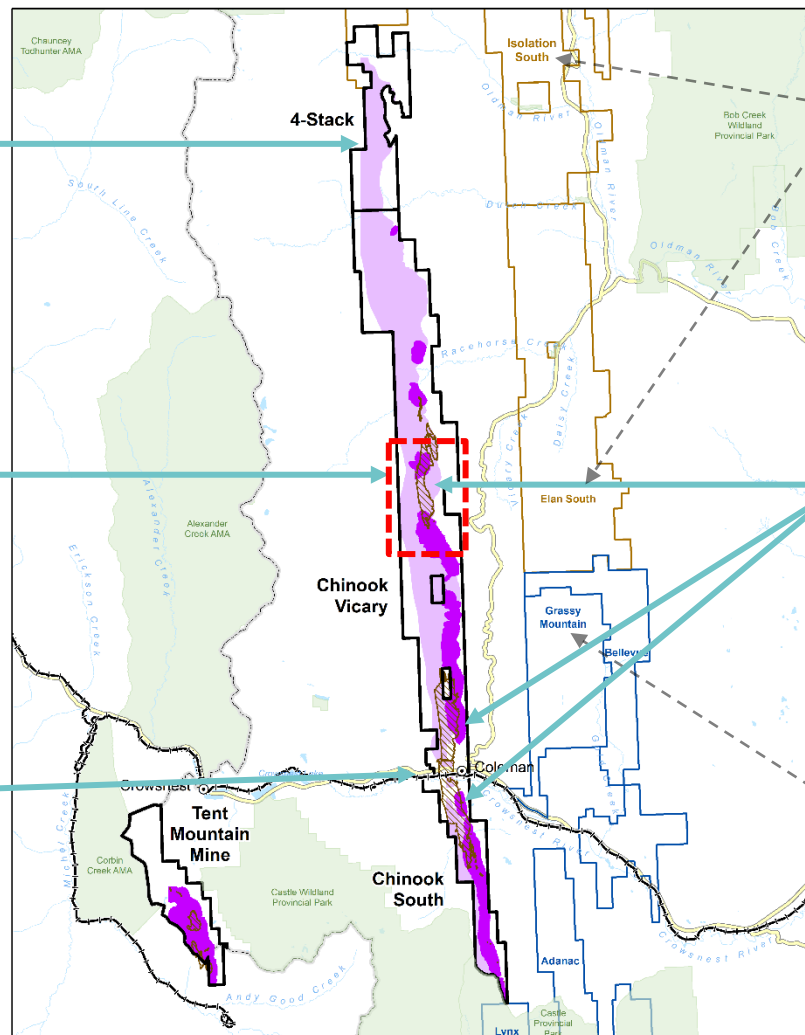
- 65Mt - 125Mt Exploration Target¹
- Northern extension of Chinook mine, or stand-alone development

Chinook Project:

- Potential for multiple large scale open-cut mines
- 149Mt JORC¹
- 125Mt - 450Mt Exploration Target¹

Infrastructure:

- Power, road and rail runs through the lease area



Atrum Coal:

Market Cap A\$150 million

Coal Quality:

- Premium Hard Coking Coal
- Vicary mine exported 100% to Japan steel mills
- Three previous underground mines

Hancock Prospecting:

Grassy Mountain A\$745 million

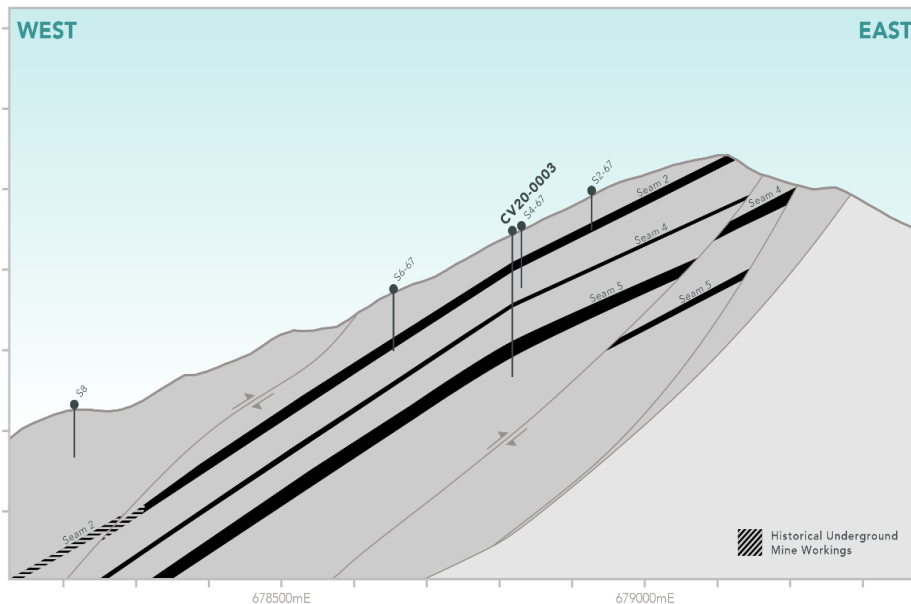
1. Mineral Resources have been estimated according to JORC 2012 standards. The potential quantity and grade of the Exploration Target is conceptual in nature and it is uncertain if further exploration will result in the estimation of a Mineral Resource. The Exploration Targets are conceptual in nature and there has been insufficient exploration carried out to define the relevant Coal Resource and are presented as a range to represent uncertainty in seam thickness, quality and location. The Exploration Target is not reported as part of any Mineral Resource or Ore Reserve.

Chinook Vicary exploration success

Large resource upgrade beginning to be defined at Chinook Vicary

- Adjacent to Hancock's Grassy Mountain Project and Atrium
- Drilling in September/October confirmed the occurrence of near surface, structurally thickened zones of coal
- Cored coal seams up to **22m thick**
- 15km from rail; previously mined and sold to Japanese steelmakers

Chinook Vicary Cross Section B-B



Greenfield Properties – Exploration Targets of over 1Bt

• Oldman:

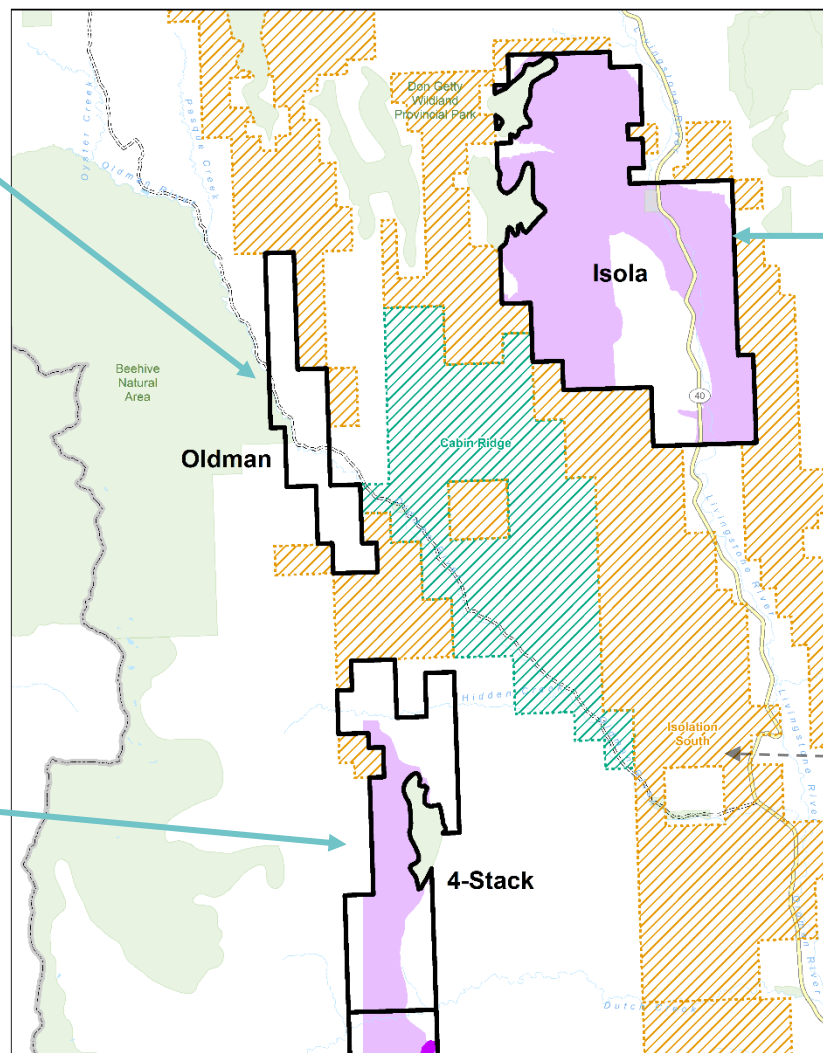
- Open-cut mining potential
- Northern extension of 4-Stack

4-Stack:

- 65Mt-125Mt Exploration Target¹
- Geological interpretation suggests coal seams have been fault repeated up to 4 times

Isola:

- 275Mt-900Mt Exploration Target¹
- Hosts both open-cut and underground mining potential



Atrum Coal:

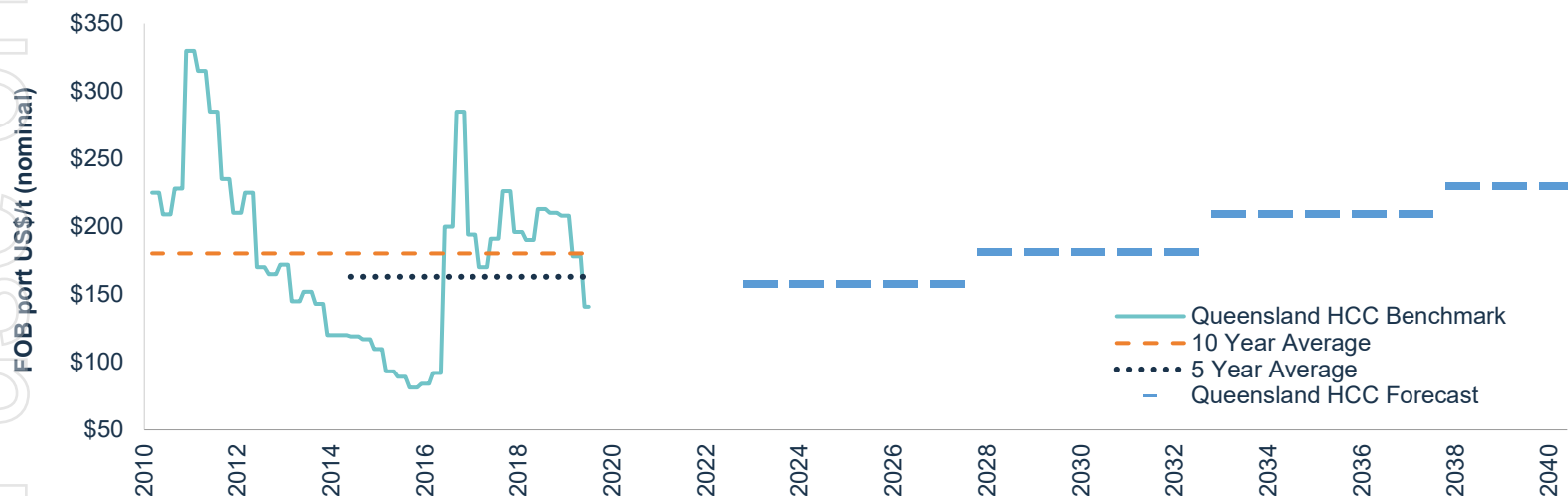
Isolation South Project has potential for large open-cut mine

1. Mineral Resources have been estimated according to JORC 2012 standards. The potential quantity and grade of the Exploration Target is conceptual in nature and it is uncertain if further exploration will result in the estimation of a Mineral Resource. The Exploration Targets are conceptual in nature and there has been insufficient exploration carried out to define the relevant Coal Resource and are presented as a range to represent uncertainty in seam thickness, quality and location. The Exploration Target is not reported as part of any Mineral Resource or Ore Reserve.

Favourable Steelmaking Coal Market Dynamics

Long-term outlook for HCC remains strong, and already at US\$140/t (spot Q1 2021)

Hard Coking Coal pricing outlook



Source: Wood Mackenzie Coal Market Service (Dec 2019); IHS McCloskey

- Spot market curve remains in strong contango, indicating traders believe current prices are low
- Canada producers currently¹ receiving US\$30/t premium to Australian prices
- Montem's uses the WoodMac long-term forecast price which is significantly below the **10-year historical price (US\$180/t)**

1. Source: HIS McCloskey Coal Report - Issue 498, 13 November 2020

Next 12 Months

- **Tent Mountain Mine restart application**
 - » Application to AER in Q4 2020; expected 12 month processing
- **Tent Mountain Mine optimisation & JV set-up**
 - » Pre-development optimisation of DFS; seeking minority JV partner at mine
- **Westshore port capacity reservation - completed**
 - » Port capacity secured for up to 1.25Mtpa export from Vancouver
- **Chinook Project exploration drilling - completed**
 - » Exploration drilling in September and October to confirm Tier 1 Hard Coking Coal
 - » Exploration targeting low ratio open-cut resources at Vicary pit
- **Chinook Project concept study update**
 - » Chinook mining study to define open-cut mining areas, overall size of the mines, and logistics options

Value



Near-Term Production

Tent Mountain Mine Definitive Feasibility Study completed; fast re-start with first coal shipments planned for 2022, capable of annual EBITDA of A\$65m¹

Long-Term Scale Upside

Potential to self fund the Chinook Project, targeting **world class scale open-cut mines**

Favourable Steelmaking Market Conditions

Historical 10-year average **HCC coal price US\$180/t; COVID-19 recovery** to be led by infrastructure spending, **increasing steel and coking coal demand**

Steelmaking Coal

High quality Hard Coking Coal

Experienced Board and Management

Board and management team with significant global coal market experience

1. Source: Tent Mountain Mine Definitive Feasibility Study: cash cost US\$88/t; avg. sale price US\$130/t; 1.1Mtpa sales

Contacts

Peter Doyle

Managing Director & CEO

+1 778 888 7604

pdoyle@montem-resources.com

Melanie Leydin

CFO and Company Secretary

+61 3 9692 7222

secretary@montem-resources.com

Nathan Ryan

IR & Media

+61 420 582 887



ersonal use only

APPENDIX 1

Reserves and Resources

Resources and Reserves

2020 JORC In-place Coal Resource (Mt)

	Measured	Indicated	Inferred	Total Resources
Tent Mountain	3.7	48.1	8.4	60.1
Chinook Vicary	-	52.6	32.2	84.8
Chinook South	-	51.2	13.1	64.3
4-Stack	-	-	-	-
Isola	-	-	-	-
Total	3.7	151.9	53.7	209.3

2020 JORC Tent Mountain Coal Reserves (Mt)

	ROM	Product
Proved	3.6	2.2
Probable	18.4	10.9
Total	22.0	13.1

2020 JORC Exploration Targets (Mt)

	Exploration Target (Mt) – 20:1 SR, 300m depth cutoff	Exploration Target (Mt) – 20:1 SR, no depth cutoff
Chinook Vicary	125	450
4-Stack	65	125
	Exploration Target (Mt) – 20:1 SR, 250m depth cutoff	Exploration Target (Mt) – 600m depth cutoff
Isola	275	900
	465	1,475

Mineral Resources have been estimated according to JORC 2012 standards. The potential quantity and grade of the Exploration Target is conceptual in nature and it is uncertain if further exploration will result in the estimation of a Mineral Resource. The Exploration Targets are conceptual in nature and there has been insufficient exploration carried out to define the relevant Coal Resource and are presented as a range to represent uncertainty in seam thickness, quality and location. The Exploration Target is not reported as part of any Mineral Resource or Ore Reserve.

Competent Person Statement

The information contained in this presentation that relates to JORC resources estimates for the Tent Mountain Mine and Chinook Project (inclusive of Chinook South and Chinook Vicary) are derived from Resource reports completed in February 2020, and fairly represents, information compiled or reviewed by Mr. Bradley Ulry, Mr. Matthew Carter and Mr. John Gorham, who are employees of Dahrouge Geological Consulting Ltd. With respect to the Resource report for the Chinook Project, information was also compiled or reviewed by Mr Nathan Schmidt, who is also an employee of Dahrouge Geological Consulting Ltd. Mr. Bradley Ulry, Mr. Matthew Carter and Mr. John Gorham are registered as Professional Geologists with the Association of Professional Engineers and Geoscientists of Alberta and are Competent Persons as defined in the JORC Code (2012 Edition of the “Australian Code for Reporting of Exploration Results, Mineral Resources and Ore Reserves”) having sufficient experience which is relevant to the style of mineralisation and type of deposit under consideration and to the activity that they are undertaking. Mr. Nathan Schmidt is a member of the Engineers and Geoscientists of British Columbia and is a Competent Person as defined in the JORC Code (2012 Edition of the “Australian Code for Reporting of Exploration Results, Mineral Resources and Ore Reserves”) having sufficient experience which is relevant to the style of mineralisation and type of deposit under consideration and to the activity that he is undertaking. Mr. Bradley Ulry, Mr. Matthew Carter, Mr. John Gorham and Mr Nathan Schmidt consent to the inclusion in this presentation of the matters based on their information and have reviewed all statements pertaining to this information and consent to this statement and to references in this presentation to them in the form and context in which they appear.

The information contained in this presentation that relates to JORC reserves statements for the Tent Mountain Mine are derived from a Feasibility Study completed in April 2020, and fairly represents, information compiled or reviewed by Mr. Robert McCarthy who is an employee of SRK Consulting (Canada) Inc. Mr. Robert McCarthy is a Professional Engineer registered with the Association of Professional Engineers and Geoscientists of British Columbia and a Competent Person as defined in the JORC Code (2012 Edition of the “Australian Code for Reporting of Exploration Results, Mineral Resources and Ore Reserves”) having sufficient experience which is relevant to the style of mineralisation and type of deposit under consideration and to the activity that they are undertaking. Mr. Robert McCarthy consents to the inclusion in this presentation of the matters based on their information and have reviewed all statements pertaining to this information and consent to this statement and to references in this presentation to them in the form and context in which they appear.

The Chinook Project Preliminary Economic Assessment (PEA) is dated November 2019 and was prepared by Mining Plus and Sedgman. The PEA is not JORC compliant and is being used by Montem as the basis for planning. The PEA models potential open-cut mines of Inferred resources (30% of total resources) which need to be upgraded to Measured and Indicated to be considered eligible for a Reserve study. Additional exploration is required to upgrade the resource. The figures quoted in the PEA study have utilised conservative assumptions for mining and processing, based on historical information from the previous mining and processing at these mines. The figures set out in this presentation relating to the PEA are subject to the qualifications set out in the Mining Plus and Sedgman reports and may be subject to change once further work is carried out, including for the purposes of a future Reserve study.