

ersonal use only



HIGH GRADE HISTORICAL GOLD MINE AND EXPLORATION PROJECTS

ACQUISITION PRESENTATION - DECEMBER 2020

DISCLAIMER

The information presented to you by Viking Mines Limited ACN 126 200 280 in this presentation and any related documents (together, Materials) has been prepared for information purposes by Red Dirt Mining Pty Ltd (Company). The Materials do not contain all of the information required in a prospectus, product disclosure statement or other disclosure document for the purpose of Chapter 6D or Chapter 7 of the Corporations Act and no prospectus has been filed with ASIC or any other regulatory authority in any other jurisdiction. By receiving the Materials, you represent and warrant that you are a person who does not require a disclosure document in connection with an offer for shares under Chapter 6D of the Corporations Act because of subsection 708(8) (sophisticated investors) or subsection 708(11) (professional investors) of the Corporations Act (Institutional Investor). If you are not an Institutional Investor, please immediately return or destroy the Materials.

NO FINANCIAL ADVICE The information contained in the Materials has been prepared without taking into account the investment objectives, financial situation or particular needs of any particular person. Nothing in the Materials constitutes financial advice. Before making any investment decision, you should consider, with or without the assistance of a financial advisor, whether an investment is appropriate in light of your particular investment needs, objectives and financial circumstances.

CONFIDENTIALITY By receiving the Materials, you acknowledge and agree to keep strictly confidential all information contained in it and all other information made available to you in connection with it. You must not reproduce or distribute, in whole or in part, the Materials or use it for any purpose other than the purpose for which it was provided.

NO LIABILITY The Company has prepared the Materials based on information available to it at the time of preparation, from sources believed to be reliable and subject to the qualifications in the Materials. To the maximum extent permitted by law, Red Dirt Mining Pty Ltd and the Company, its related bodies corporate and their respective officers, employees, representatives, agents or advisers accept no responsibility or liability for the contents of the Materials. No representation or warranty, express or implied, is made as to the fairness, accuracy, adequacy, validity, correctness or completeness of the information, opinions and conclusions contained in the Materials.

LIMITED DISTRIBUTION The Materials are intended to be provided only to Institutional Investors in Australia. The Company has not currently registered a prospectus in Australia or in any overseas jurisdiction. By receiving the Materials, you agree not to reproduce or distribute the Materials, in whole or in part, to any other persons without the express consent of the Company.

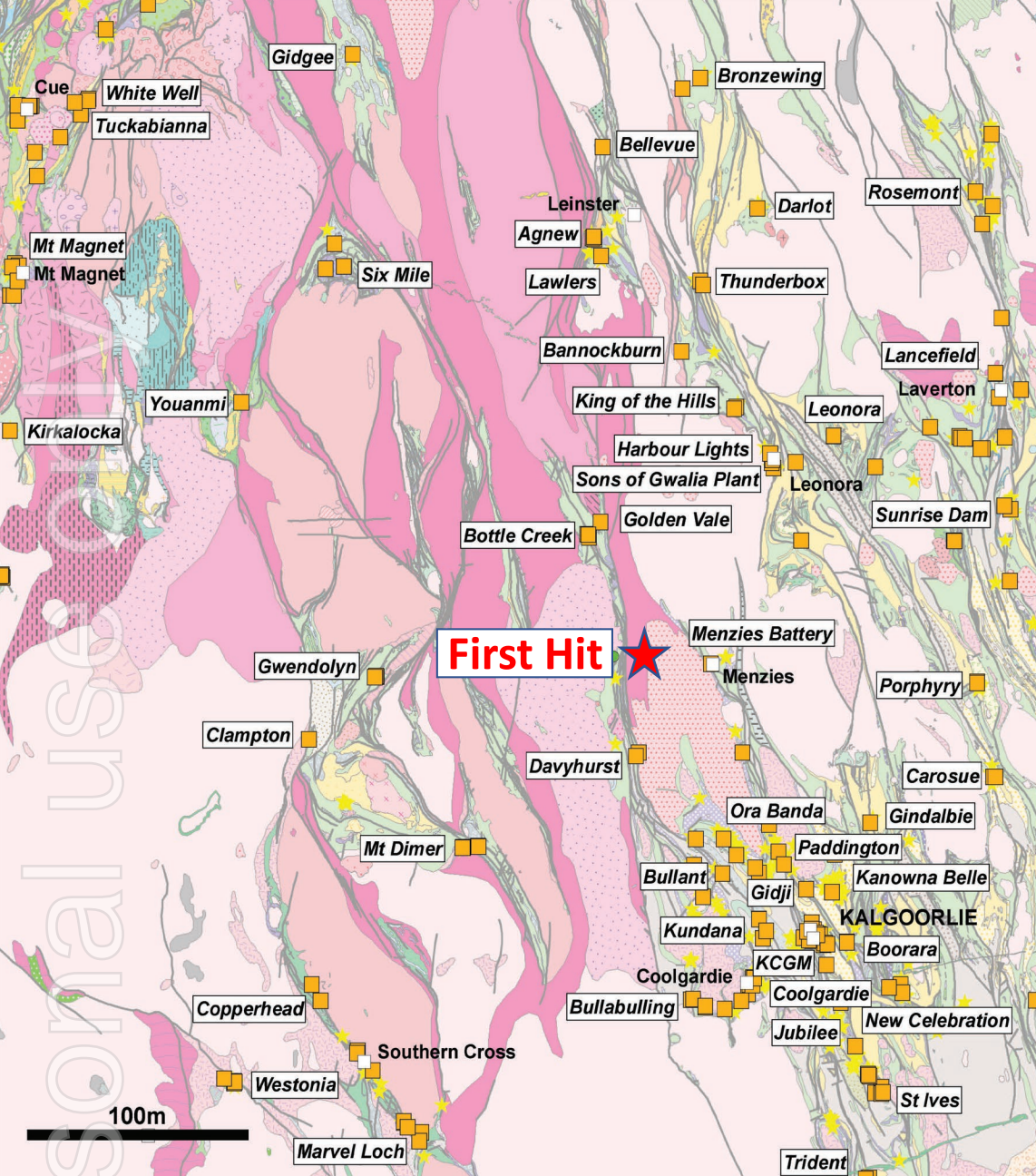
PAST PERFORMANCE Past performance information contained in the Materials is given for illustration purposes only and should not be relied upon as (and is not) an indication of future performance. Actual results could differ materially from those referred to in the Materials.

Competent Persons Statement

Information in this release that relates to Exploration Results on the Western Australian projects is based on information compiled by Mr Ian Stockton, who is a Member of the Australian Institute of Mining and Metallurgy (AusIMM). Mr Stockton is a full-time employee of CSA Global. Mr Stockton is engaged by Viking Mining Limited as an independent consultant. Mr Stockton has sufficient experience which is relevant to the style of mineralisation and type of deposit under consideration and to the activity being undertaken to qualify as a Competent Person as defined in the 2012 Edition of the 'Australasian Code for Reporting of Exploration Results, Mineral Resources and Ore Reserves'. Mr Stockton consents to the inclusion in this release of the matters based on his information in the form and context in which it appears.

- **4.9m @ 64.8 g/t Au** from 62.1m (FHU045)
- **3.7m @ 22.2 g/t Au** from 64.3m (FHU058)
- **4.5m @ 10.00 g/t Au** from 55.8m (FHU055)
- **3m @ 77.6 g/t Au** from 224.0m (BFH030)
- **1m @ 66.7 g/t Au** from 164.0m (BFH074)
- **4m @ 26.1 g/t Au** from 58.0m (BFH005)





FIRST HIT MINE

HISTORICAL MINING OPERATION

- Mined by Barra Resources and Barminco between 2001 and 2002, **producing 30,830 oz** via a decline extending to a depth of 180m below the box cut entrance¹
- 100% owned**, Granted **mining lease valid until 2032**
- Mineralisation Vein-hosted with **thickness up to 10m, average 1-4m wide**
- Cash cost at closure sub US\$345**, operations ceased due to gold price
- Metallurgical Gold recoveries of **94.1%**¹
- Located `50km from Ora Banda Mining's Davyhurst Mill with up to **6 mills in relative proximity**

¹ Viking Mines Limited ASX Release 26 November 2020 [2924-02314096-6A1009199 \(markitdigital.com\)](https://www.vikingmines.com.au/~/media/Files/2020/11/26/Viking_Mines_Limited_ASX_Release_26_November_2020.pdf)

FIRST HIT MINE

EXPLORATION TARGETS

Intercepts below the existing resource:

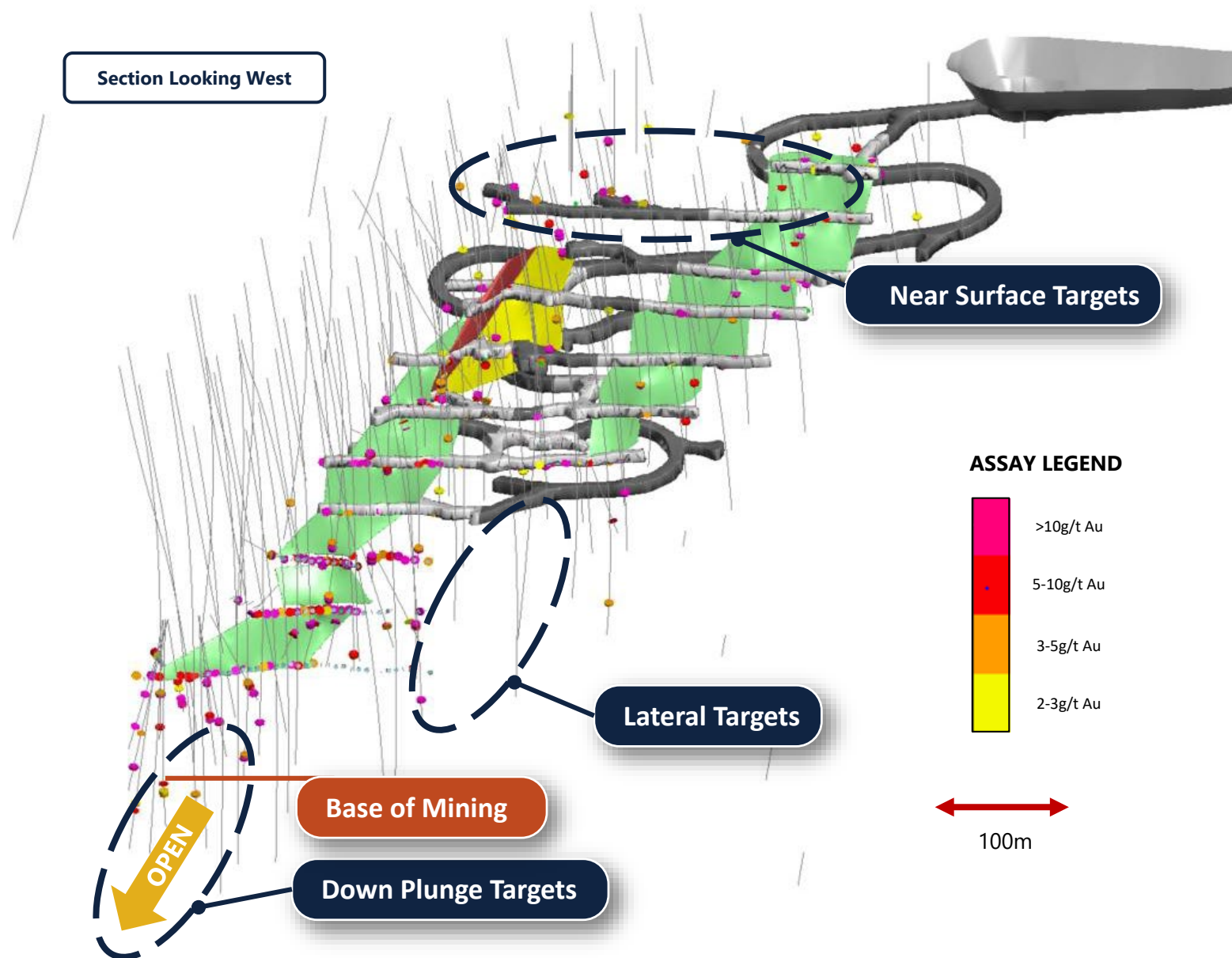
- 4.9m @ 64.8 g/t Au from 62.1m (FHU045)
- 3.7m @ 22.2 g/t Au from 64.3m (FHU058)
- 4.5m @ 10.00 g/t Au from 55.8m (FHU055)
- 3m @ 9.3 g/t Au from 273.0m (BFH114)

Intercepts laterally adjacent to historical resource:

- 3m @ 77.6 g/t Au from 224.0m (BFH030)
- 1m @ 66.7g/t Au from 164.0m (BFH074)
- 1m @ 15.40 g/t Au from 255.0m (BFH115)



Intercepts above the mined workings include:

- 4m @ 26.1 g/t Au from 58.0m (BFH005)
- 2m @ 13.1 g/t Au from 27.0m (BFH064)
- 2m @ 5.1 g/t Au from 18.0m (BFH096)
- 4m @ 2.3 g/t Au from 38.0m (BFH103)



FIRST HIT & EMERALD PROJECTS

EASTERN GOLDFIELDS LOCATION

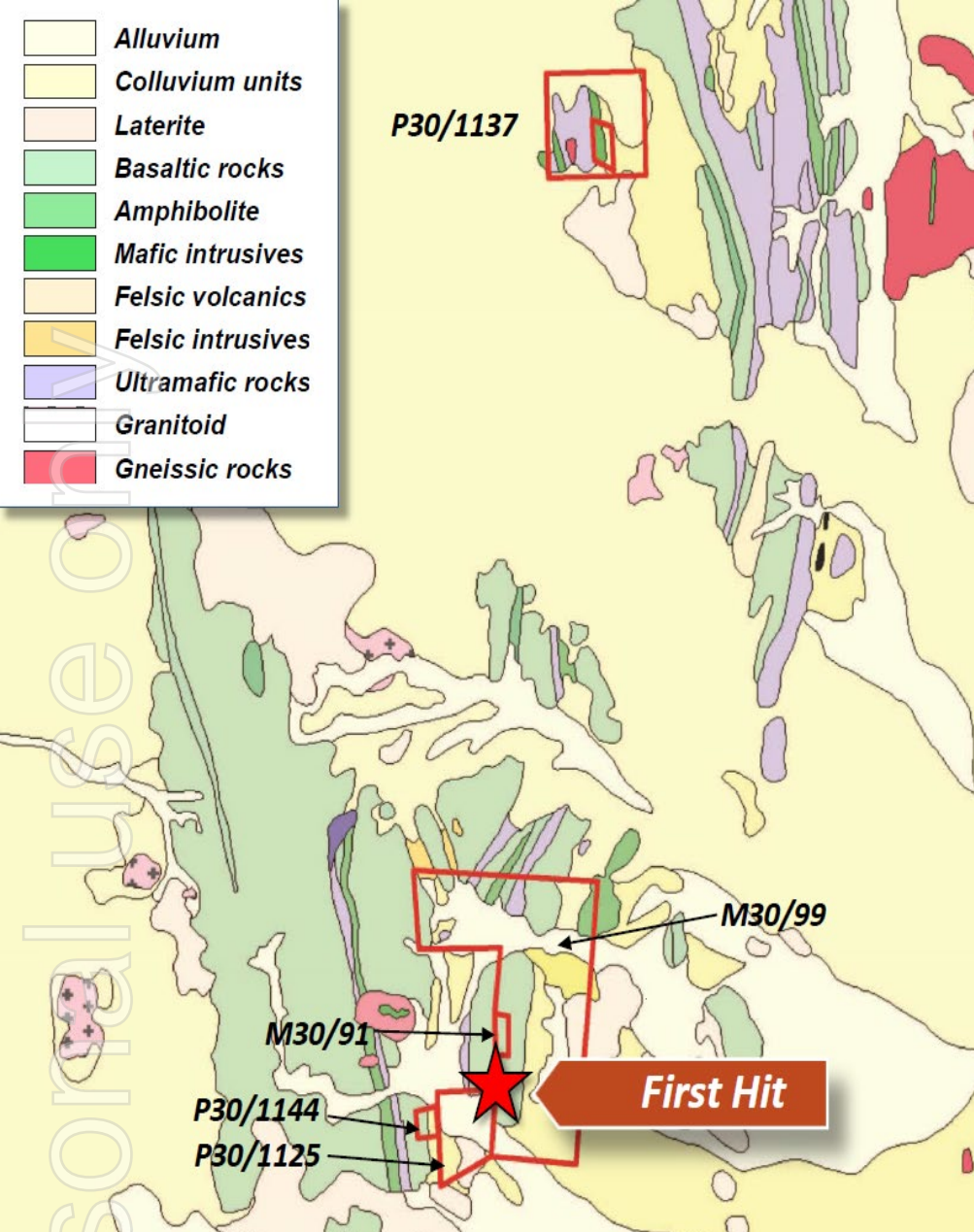
-  Red Dirt Mining
-  Ora Banda - Riverina

RED DIRT MINING - EMERALD

RED DIRT MINING - FIRST HIT

20KM

ORA BANDA - RIVERINA

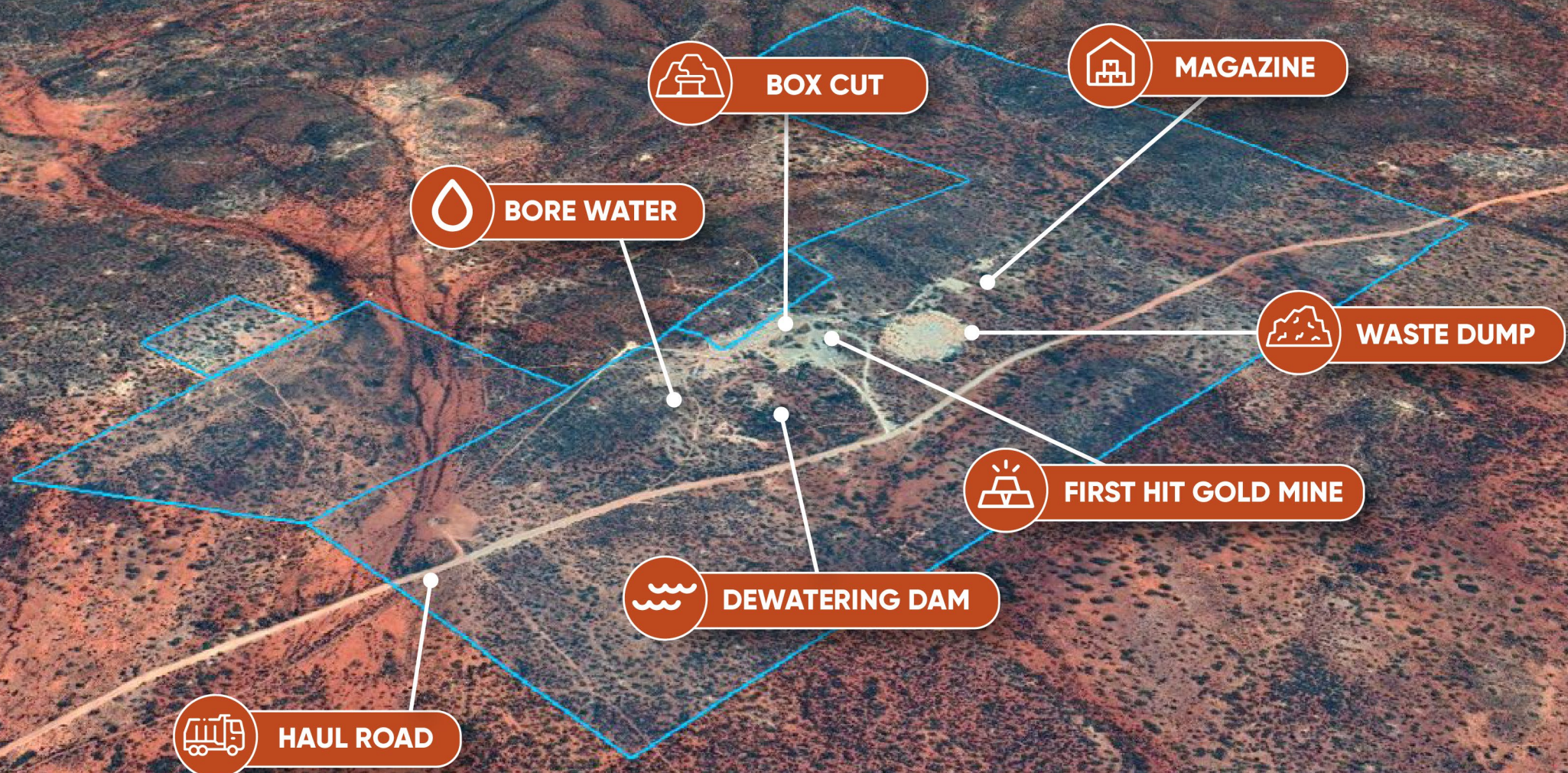


FIRST HIT PROJECT

EXPLORATION READY

- Primary focus is on expansion of **existing First Hit mine** and testing the **numerous exploration targets to provide a pathway to resource estimation**;
- Outside of the existing mine area, numerous clearly defined exploration targets are defined by historical data sets but are untested by modern exploration techniques.
- Additional exploration activities to advance these key exploration targets include detailed **geological mapping**, modern **infill geochemistry** and **spectral analysis** for drill target definition.
- Exploration program being designed by **CSA Global and Program of Works (PoW)** in place to enable immediate drilling
- **Turnkey geological programs** have been scoped with **CSA Global** to execute immediate field work, drilling operations and resource modelling
- Historical approvals & work previously completed:
 - Heritage and Native Title Agreements
 - Environmental Approvals
 - Ground & bore water licences
 - Road Transportation Agreements & Licences
 - Archaeological & Ethnological studies
 - Soil & Environmental studies
 - Fauna, flora and Heritage Surveys

FIRST HIT MINE INFRASTRUCTURE



Personal use only

FIRST HIT MINE

EXISTING INFRASTRUCTURE ONSITE



Fuel storage facility - fuel tank and bowser removed



Workshop area and mine office cement pads



Boxcut to the decline at First Hit - access blocked and portal fenced



Vent rise - covered with steel plate

First Hit underground portal



FIRST HIT PROJECT

PROJECT ADVANCEMENT TIMELINE

EXPLORATION PROGRAM

FIRST HIT PROJECT



*These dates are indicative only and are subject to confirmation and change due to various factors



VIKING MINES

CONTACT

Dean Jagger
Company Secretary
02 8072 1447

Charles Thomas
Corporate Enquiries
0402 058 770

