

ASX ANNOUNCEMENT

RRL1648D

19 November 2019

Exceptional Gold Grades Encountered in Youanmi Near Mine Exploration

ROX RESOURCES LIMITED

ASX: RXL

Rox Resources Limited (ASX: RXL) is an Australian listed company with advanced gold and nickel projects in Western Australia: the Youanmi Gold Project, Mt Fisher Gold project, and the Fisher East and Collurabbie Nickel projects.

DIRECTORS

Mr Stephen Dennis
Chairman

Mr Alex Passmore
Managing Director

Mr Brett Dickson
Finance Director

Dr John Mair
Non-Executive Director

Shares on Issue	1,458m
Share Price	\$0.019
Market Cap.	\$27.7m
Cash & Receivables	\$9.3m

(at 30/09/19)

Level 1, 34 Colin Street,
West Perth WA 6005

+61 8 9226 0044

admin@roxresources.com.au

www.roxresources.com.au

Highlights:

Drilling at the Youanmi Gold Project has intersected exceptional gold grades. Results received from shallow drilling to the south of the Youanmi Plant include:

MLRC020: 5m @ 125.68 g/t Au from 0m

Including: 2m @ 311.46 g/t Au from 2.5m

including 1m @ 591.89 g/t Au from 3m

including 0.5m @ 1058.49 g/t Au from 3m

Australian gold and nickel company, Rox Resources Limited ("Rox" or "the Company") (ASX: RXL), in conjunction with its joint venture partner Venus Metals Corporation (ASX: VMC) is pleased to announce exceptionally high grade results from its ongoing drilling campaign at the OYG JV which forms part of the wider Youanmi Gold Project.

The JV (Rox managed) recently conducted a series of shallow of RC holes to the south of the Youanmi plant to test a laterite gold target.

The laterite zone appears to have an average grade of ~1.5g/t Au and thickness of ~2m and is continuous from historical drilling at the airstrip over an area of about 280m x 100m (See Table 1).

Significantly, drill hole MLRC020, located on the northern-most line of the drill plan, returned extremely high gold grades (as per above) with plentiful visible gold present in RC chips (Figure 1). The area to the north is yet to be tested by drilling.

Although weathered, RC drill chips from the high-grade interval suggest the host rock is strongly altered granite with abundant vein quartz. On this basis, Rox's current interpretation is that the gold is from a primary source, rather than from supergene upgrading effects.

Visible gold presents as nuggets up to 2-3mm in size which are intergrown with translucent quartz that the Company is interpreting to be vein quartz.

Managing Director Alex Passmore Commented: *"We are very pleased to report these high-grade results and look forward to reporting further results from drill testing down dip and to the north of this position"*

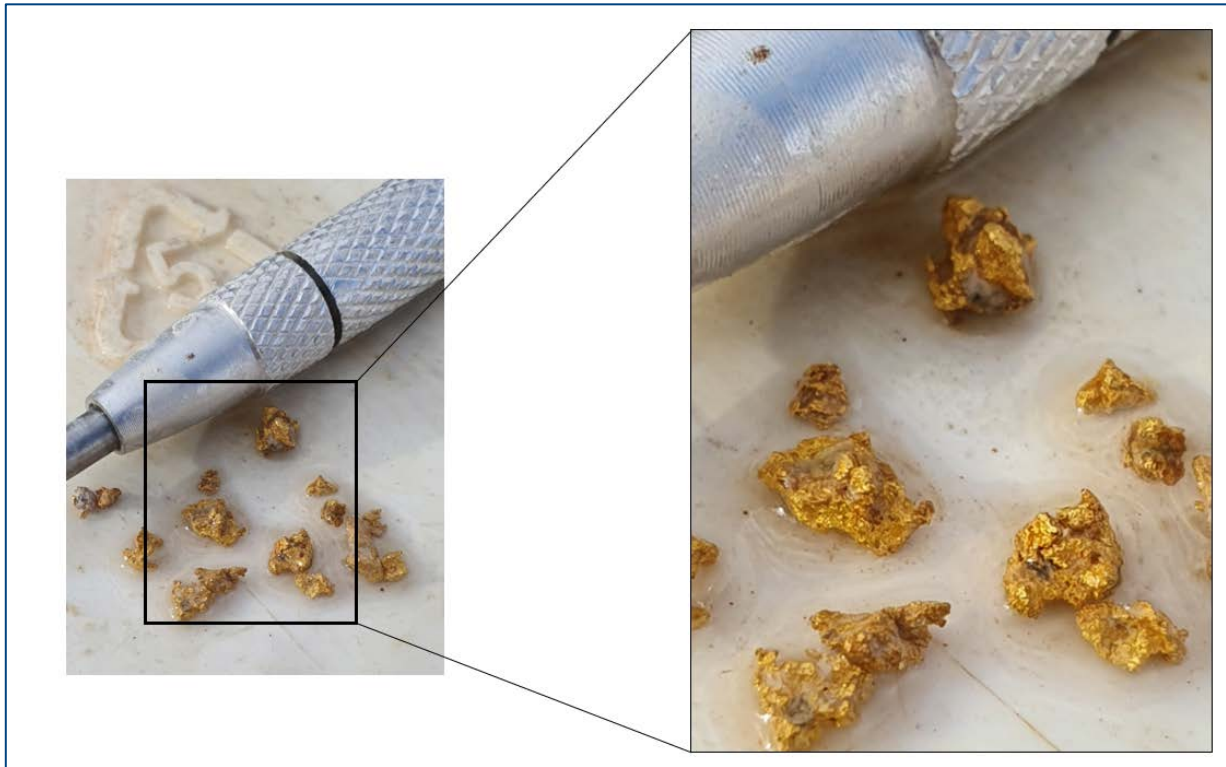


Figure 1 – Visible Gold in RC Chips from MLRC020 (from 3.0 - 3.5m interval)

While early stage, these results are considered highly encouraging. In historical mine records there is reportedly free-milling gold mineralisation present within the Youanmi granite to the east of the Main Lode Shear Zone (i.e. away from the granite – greenstone contact).

One such area is a gold lode developed in the footwall to the Main Lode, towards the northern end of the Main pit (Figure 2). Historic mining records (pre-1942) describe this as the Peru Reef, a narrow sub-vertical north-trending quartz vein with a mineralised strike length of approximately 100m. Production figures were not recorded, however the grade is reputed to have averaged >60g/t Au from near surface workings.

Follow Up Drilling to Commence Immediately

A series of holes has been planned to test down dip of MLRC020 and to the north-north-west along strike. Results will be released as they become available.

Given the shallow nature of the mineralisation encountered a series of costeans will also be dug across the interpreted strike of mineralisation seen in MLRC020 to assist in geological mapping and to provide channel samples for assay.

For personal use only

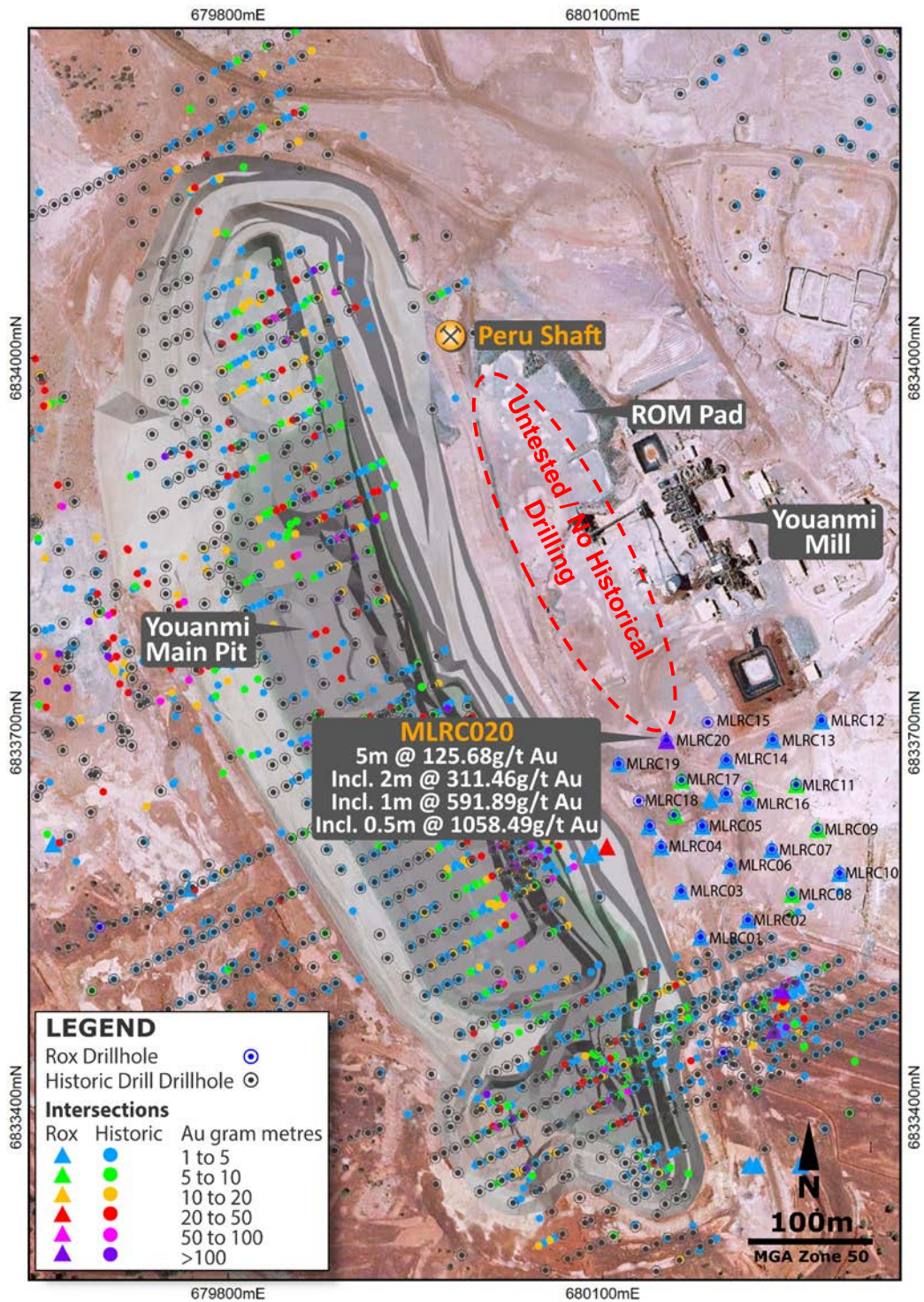


Figure 2 – Aerial photo with drill collars and intersections overlaid

*** ENDS ***

For more information:

Alex Passmore
Managing Director
Rox Resources Limited
Tel: +61 8 9226 0044
admin@roxresources.com.au

Matt Hogan
Managing Director
Venus Metals Corporation Limited
Tel: +61 8 9321 7541

Competent Person Statements

Exploration Results

The information in this report that relates to Data and Exploration Results is based on information compiled and reviewed by Mr Gregor Bennett a Competent Person who is a Member of the Australian Institute Geoscientists (AIG) and Senior Geologist at Rox Resources. Mr Bennett has sufficient experience relevant to the style of mineralisation and type of deposit under consideration and to the activity which he has undertaken to qualify as a Competent Person as defined in the 2012 Edition of the 'Australasian Code for the Reporting of Exploration Results, Mineral Resources and Ore Reserves'. Mr Bennett consents to the inclusion in the report of the matters based on his information in the form and context in which it appears.

Where reference is made to previous releases of exploration results in this announcement, the Company confirms that it is not aware of any new information or data that materially affects the information included in those announcements and all material assumptions and technical parameters underpinning the exploration results included in those announcements continue to apply and have not materially changed.

The information in this report that relates to previous Exploration Results, was either prepared and first disclosed under the JORC Code 2004 or under the JORC Code 2012 and has been properly and extensively cross-referenced in the text to the date of original announcement to ASX. In the case of the 2004 JORC Code Exploration Results and Mineral Resources, they have not been updated to comply with the JORC Code 2012

Resource Statements

The information in this report that relates to gold Mineral Resources for the Youanmi Project was reported to the ASX on 17 April 2019 (JORC 2012). Rox confirms that it is not aware of any new information or data that materially affects the information included in the announcement of 17 April 2019, and that all material assumptions and technical parameters underpinning the estimates in the announcement of 17 April 2019 continue to apply and have not materially changed.

The information in this report that relates to gold Mineral Resources for the Mt Fisher project was reported to the ASX on 11 July 2018 (JORC 2012). Rox confirms that it is not aware of any new information or data that materially affects the information included in the announcement of 11 July 2018, and that all material assumptions and technical parameters underpinning the estimates in the announcement of 11 July 2018 continue to apply and have not materially changed.

Forward-Looking Statements

This document may include forward-looking statements. Forward-looking statements include, but are not limited to, statements concerning Rox Resources Limited planned exploration program(s) and other statements that are not historical facts. When used in this document, the words such as "could," "plan," "estimate," "expect," "intend," "may", "potential," "should," and similar expressions are forward looking statements.

About Rox Resources

Rox Resources Limited is an emerging Australian minerals exploration company. The company has a number of key assets at various levels of development with exposure to gold, nickel, copper and platinum group elements (PGE's). The 1.2Moz Youanmi Gold Project and the Fisher East Nickel Project (78kt Ni) being the most advanced projects with exploration ongoing at the Mt Fisher Gold Project and the Collurabbie Nickel-Copper-PGE Project.

Youanmi Gold Project (Youanmi Gold Mine 50% and option to increase to 70%, Regional JV's 50% earn-in)

The Youanmi Gold Mine is located 480 km to the northeast of Perth, Western Australia. The Youanmi Mining Centre has produced an estimated 667,000 oz of gold (at 5.47 g/t Au) since discovery in 1901 during three main periods: 1908 to 1921, 1937 to 1942, and 1987 to 1997.

The project is situated in the Youanmi Greenstone Belt, within the Southern Cross Province of the Archaean Yilgarn Craton in Western Australia. The structure of the Youanmi Project is dominated by the north-trending Youanmi Fault Zone. Most of the gold mineralisation seen at the project is hosted within north-northwest splays off the north-northeast trending Youanmi Fault.

Fisher East Nickel Project (100%)

The Fisher East nickel project is located in the North Eastern Goldfields region of Western Australia and hosts several nickel sulphide deposits. The total project area is ~350km².

Discovery of, and drilling at the Camelwood, Cannonball and Musket nickel prospects has defined a JORC 2012 Mineral Resource (ASX:RXL 5 February 2016) of 4.2Mt grading 1.9% Ni reported at 1.0% Ni cut-off (Indicated Mineral Resource: 3.7Mt grading 1.9% Ni, Inferred Mineral Resource: 0.5Mt grading 1.5% Ni) comprising massive and disseminated nickel sulphide mineralisation, and containing 78,000 tonnes of nickel. Higher grade mineralisation is present in all deposits (refer to ASX announcement above) and is still open at depth beneath each deposit. Additional nickel sulphide deposits continue to be discovered (e.g. Sabre) and these will add to the resource base. Exploration is continuing to define further zones of potential nickel sulphide mineralisation.

Collurabbie Gold-Nickel Project (100%)

The Collurabbie project is located in the highly prospective North Eastern Goldfields region of Western Australia and is prospective for gold and nickel. The project area of ~123km² hosts the Olympia nickel sulphide deposit and a number of other prospects for nickel sulphide mineralisation. A JORC 2012 Inferred Mineral Resource of 573,000t grading 1.63% Ni, 1.19% Cu, 0.082% Co, 1.49g/t Pd, 0.85g/t Pt has been defined at Olympia (ASX: RXL 18 August 2017). The style of nickel sulphide mineralisation is different to that at Fisher East, with a significant copper and PGE component at Collurabbie, and has been compared to the Raglan nickel deposits in Canada (>1Mt contained nickel). In addition, there is potential for gold mineralisation, with several strong drilling intersections including 2m @ 2.4g/t Au from the Naxos prospect.

Mt Fisher Gold Project (100%)

The Mt Fisher gold project is located in the North Eastern Goldfields region of Western Australia, adjacent to the Fisher East nickel project, and hosts several gold deposits. The total project area is ~220km².

Drilling by Rox has defined numerous high-grade gold targets and a JORC 2012 Measured, Indicated and Inferred Mineral Resource (ASX:RXL 11 July 2018) of 1.0 million tonnes grading 2.7 g/t Au reported at a 0.8 g/t Au cut-off exists for 89,000 ounces of gold (Measured: 170,000 tonnes grading 4.1 g/t Au, Indicated: 220,000 tonnes grading 2.7 g/t Au, Inferred: 630,000 tonnes grading 2.3 g/t Au) aggregated over the Damsel, Moray Reef and Mt Fisher deposits.

Table 1 – Significant Intersections

Hole ID	from	to	Interval	Au g/t	Au g.m	Comments
MLRC01	0.5	2.5	2	0.65	1.3	0.5g/t Au Cut off
MLRC02	0.5	1	0.5	0.65	0.33	0.5g/t Au Cut off
MLRC02	2	3	1	0.95	0.95	0.5g/t Au Cut off
MLRC03	1	2.5	1.5	0.8	1.2	0.5g/t Au Cut off
MLRC04	0	2.5	2.5	0.71	1.78	0.5g/t Au Cut off
MLRC05	0.5	1	0.5	0.68	0.34	0.5g/t Au Cut off
MLRC05	1.5	2.5	1	1.12	1.12	0.5g/t Au Cut off
MLRC06	2	3.5	1.5	1.16	1.74	0.5g/t Au Cut off
MLRC07	0	3.5	3.5	1.3	4.55	0.5g/t Au Cut off
MLRC08	2	4.5	2.5	2.57	6.43	0.5g/t Au Cut off
Including	3	3.5	0.5	5.02	2.51	5g/t Au Cut off
MLRC09	0.5	1	0.5	1.18	0.59	0.5g/t Au Cut off
MLRC09	1.5	4	2.5	3.11	7.78	0.5g/t Au Cut off
MLRC10	3	5	2	1.89	3.78	0.5g/t Au Cut off
MLRC11	0	3	3	1.85	5.55	0.5g/t Au Cut off
MLRC12	2	3	1	2.21	2.21	0.5g/t Au Cut off
MLRC13	1	3	2	1.99	3.98	0.5g/t Au Cut off
MLRC14	0	2	2	0.86	1.72	0.5g/t Au Cut off
MLRC16	0	3.5	3.5	1.11	3.89	0.5g/t Au Cut off
MLRC17	0.5	3	2.5	2.15	5.38	0.5g/t Au Cut off
MLRC18	1	2.5	1.5	0.62	0.93	0.5g/t Au Cut off
MLRC19	1	2.5	1.5	0.72	1.08	0.5g/t Au Cut off
MLRC19	3	5	2	1.9	3.8	0.5g/t Au Cut off
MLRC20	0	5	5	125.68	628.4	0.5g/t Au Cut off
Including	2.5	4.5	2	311.46	622.92	10g/t Au Cut off
Including	3	4	1	591.89	591.89	100g/t Au Cut off
Including	3	3.5	0.5	1058.49	529.25	1000g/t Au Cut off

For personal use only

Table 2 - Collar Locations and Drilling Details

Hole ID	Prospect	Drill Type	East	North	RL	Depth	Dip	Azi
MLRC01	Mill Laterite	RC	680178.8	6833536.0	458.2	5	-90	-90
MLRC02	Mill Laterite	RC	680216.8	6833549.7	459.0	5	-90	-90
MLRC03	Mill Laterite	RC	680163.2	6833572.9	458.7	5	-90	-90
MLRC04	Mill Laterite	RC	680147.2	6833608.3	458.7	5	-90	-90
MLRC05	Mill Laterite	RC	680180.2	6833625.0	459.3	5	-90	-90
MLRC06	Mill Laterite	RC	680202.6	6833593.7	459.4	5	-90	-90
MLRC07	Mill Laterite	RC	680235.9	6833606.4	459.9	5	-90	-90
MLRC08	Mill Laterite	RC	680252.2	6833570.5	459.6	5	-90	-90
MLRC09	Mill Laterite	RC	680272.6	6833622.5	460.6	5	-90	-90
MLRC10	Mill Laterite	RC	680290.2	6833587.2	460.4	6	-90	-90
MLRC11	Mill Laterite	RC	680255.5	6833658.2	460.8	5	-90	-90
MLRC12	Mill Laterite	RC	680275.7	6833709.6	461.9	5	-90	-90
MLRC13	Mill Laterite	RC	680236.7	6833694.3	461.1	5	-90	-90
MLRC14	Mill Laterite	RC	680199.5	6833677.9	460.5	5	-90	-90
MLRC15	Mill Laterite	RC	680184.6	6833707.9	460.8	5	-90	-90
MLRC16	Mill Laterite	RC	680217.5	6833643.4	460.1	5	-90	-90
MLRC17	Mill Laterite	RC	680163.5	6833661.8	459.8	5	-90	-90
MLRC18	Mill Laterite	RC	680129.3	6833644.9	459.1	5	-90	-90
MLRC19	Mill Laterite	RC	680113.1	6833674.8	459.6	5	-90	-90
MLRC20	Mill Laterite	RC	680151.4	6833693.7	460.3	5	-90	-90

For personal use only

JORC Table 1 - Section 1 Data and Sampling Techniques

Criteria	JORC Code explanation	Commentary
Sampling techniques	<i>Nature and quality of sampling (e.g. cut channels, random chips, or specific specialised industry standard measurement tools appropriate to the minerals under investigation, such as down hole gamma sondes, or handheld XRF instruments, etc). These examples should not be taken as limiting the broad meaning of sampling.</i>	RC hole diameter was 5.5" (140 mm) reverse circulation percussion (RC). Sampling of RC holes was undertaken by collecting 0.5m cone split samples at intervals. Drill holes were vertical (-90 degrees) to intersect horizontal laterite target as close to perpendicular as possible.
	<i>Include reference to measures taken to ensure sample representivity and the appropriate calibration of any measurement tools or systems used</i>	Drillhole locations were picked up by DGPS. Logging of drill samples included lithology, weathering, texture, moisture and contamination (as applicable). Sampling protocols and QAQC are as per industry best practice procedures.
	<i>Aspects of the determination of mineralisation that are Material to the Public Report. In cases where 'industry standard' work has been done this would be relatively simple (e.g. 'reverse circulation drilling was used to obtain 1 m samples from which 3 kg was pulverised to produce a 30 g charge for fire assay'). In other cases more explanation may be required, such as where there is coarse gold that has inherent sampling problems. Unusual commodities or mineralisation types (e.g. submarine nodules) may warrant disclosure of detailed information</i>	RC drillholes were sampled on 0.5m intervals using riffle or cone splitter units. Samples were sent to Intertek Genalysis in Perth, crushed to 10mm, dried and pulverised (total prep) in LM5 units. The pulps were analysed by 50g Fire Assay with ICP-OES (Intertek code FA25/OE).
Drilling techniques	<i>Drill type (e.g. core, reverse circulation, open-hole hammer, rotary air blast, auger, Bangka, sonic, etc) and details (e.g. core diameter, triple or standard tube, depth of diamond tails, face-sampling bit or other type, whether core is oriented and if so, by what method, etc).</i>	Drilling technique was Reverse Circulation (RC). The RC hole diameter was 140mm face sampling hammer. Hole depths reported range from 5m to 6m.
Drill sample recovery	<i>Method of recording and assessing core and chip sample recoveries and results assessed</i>	RC drill recoveries were high (>90%).
	<i>Measures taken to maximise sample recovery and ensure representative nature of the samples</i>	RC samples were visually checked for recovery, moisture and contamination and notes made in the logs.
	<i>Whether a relationship exists between sample recovery and grade and whether sample bias may have occurred due to preferential loss/gain of fine/coarse material.</i>	There is no observable relationship between recovery and grade, and therefore no sample bias.
Logging	<i>Whether core and chip samples have been geologically and geotechnically logged to a level of detail to support appropriate Mineral Resource estimation, mining studies and metallurgical studies.</i>	Detailed geological logs have been carried out on all RC drill holes, but no geotechnical data have been recorded (or is possible to be recorded due to the nature of the sample). The geological data would be suitable for inclusion in a Mineral Resource estimate.
	<i>Whether logging is qualitative or quantitative in nature. Core (or costean, channel, etc) photography.</i>	Logging of RC chips recorded lithology, mineralogy, mineralisation, weathering, colour, and other sample features. RC chips are stored in plastic RC chip trays.
	<i>The total length and percentage of the relevant intersections logged</i>	All holes were logged in full.

Criteria	JORC Code explanation	Commentary
Sub-sampling techniques and sample preparation	<i>If core, whether cut or sawn and whether quarter, half or all core taken.</i>	N/A
	<i>If non-core, whether riffled, tube sampled, rotary split, etc and whether sampled wet or dry.</i>	RC samples were collected on the drill rig using a cone splitter. All samples were dry.
	<i>For all sample types, the nature, quality and appropriateness of the sample preparation technique.</i>	The sample preparation followed industry best practice. Fire Assay samples were dried, coarse crushing to ~10mm, followed by pulverisation of the entire sample in an LM5 or equivalent pulverising mill to a grind size of 85% passing 75 micron.
	<i>Quality control procedures adopted for all sub-sampling stages to maximise representivity of samples.</i>	Field QC procedures involve the use of Certified Reference Materials (CRM's) as assay standards, along with duplicates and blank samples. The insertion rate of these was approximately 1:20.
	<i>Measures taken to ensure that the sampling is representative of the in situ material collected, including for instance results for field duplicate/second-half sampling.</i>	For RC drilling field duplicates were taken on a routine basis at an approximate 1:20 ratio using the same sampling techniques (i.e. cone splitter) and inserted into the sample run.
<i>Whether sample sizes are appropriate to the grain size of the material being sampled.</i>	The sample sizes are considered more than adequate to ensure that there are no particle size effects relating to the grain size of the mineralisation which lies in the percentage range.	
Quality of assay data and laboratory tests	<i>The nature, quality and appropriateness of the assaying and laboratory procedures used and whether the technique is considered partial or total.</i>	The analytical technique involved Fire Assay 50g.
	<i>For geophysical tools, spectrometers, handheld XRF instruments, etc, the parameters used in determining the analysis including instrument make and model, reading times, calibrations factors applied and their derivation, etc.</i>	No geophysical or portable analysis tools were used to determine assay values stored in the database.
	<i>Nature of quality control procedures adopted (e.g. standards, blanks, duplicates, external laboratory checks) and whether acceptable levels of accuracy (i.e. lack of bias) and precision have been established.</i>	Internal laboratory control procedures involve duplicate assaying of randomly selected assay pulps as well as internal laboratory standards. All of these data are reported to the Company and analysed for consistency and any discrepancies.
Verification of sampling and assaying	<i>The verification of significant intersections by either independent or alternative company personnel.</i>	Senior personnel from the Company (Managing Director and Senior Geologist) have visually inspected mineralisation within significant intersections.
	<i>The use of twinned holes.</i>	No holes in this announcement have been twinned at this stage.
	<i>Documentation of primary data, data entry procedures, data verification, data storage (physical and electronic) protocols.</i>	Primary data was collected using a standard set of Excel templates on Toughbook laptop computers in the field. These data are transferred to Geobase Pty Ltd for data verification and loading into the database.
	<i>Discuss any adjustment to assay data.</i>	No adjustments or calibrations have been made to any assay data.

Criteria	JORC Code explanation	Commentary
Location of data points	<i>Accuracy and quality of surveys used to locate drillholes (collar and down-hole surveys), trenches, mine workings and other locations used in Mineral Resource estimation.</i>	DGPS collar surveys have been undertaken by a licensed surveyor.
	<i>Specification of the grid system used.</i>	The grid system is MGA_GDA94, zone 50 for easting, northing and RL.
	<i>Quality and adequacy of topographic control.</i>	The topography of the mined open pits is well defined by historic monthly survey pickups
Data spacing and distribution	<i>Data spacing for reporting of Exploration Results.</i>	The drill hole spacing is approximately 40 metres.
	<i>Whether the data spacing and distribution is sufficient to establish the degree of geological and grade continuity appropriate for the Mineral Resource and Ore Reserve estimation procedure(s) and classifications applied.</i>	Data spacing and distribution is sufficient to establish the degree of geological and grade continuity for laterite mineralisation appropriate for mineral resource classifications. Data spacing and distribution is not sufficient to establish the degree of geological and grade continuity for primary mineralisation (i.e. granite hosted) appropriate for mineral resource classifications.
	<i>Whether sample compositing has been applied.</i>	No sample compositing has been applied. Samples were collected in 0.5m intervals.
Orientation of data in relation to geological structure	<i>Whether the orientation of sampling achieves unbiased sampling of possible structures and the extent to which this is known, considering the deposit type.</i>	The laterite mineralisation is generally sub horizontal. The drill orientation was 090 degrees and -90 dip. Drilling is believed to be generally perpendicular to laterite mineralisation. Mineralisation hosted in the Youanmi granite is interpreted to strike NNW and dip steeply WSW. Primary mineralisation at Youanmi strikes generally northwest-southeast and dips to the west at between -50 to -70 degrees. The drill orientation is believed to not be perpendicular to strike.
	<i>If the relationship between the drilling orientation and the orientation of key mineralised structures is considered to have introduced a sampling bias, this should be assessed and reported if material.</i>	No sampling bias is believed to have been introduced.
	Sample security	<i>The measures taken to ensure sample security.</i>
Audits or reviews	<i>The results of any audits or reviews of sampling techniques and data.</i>	No audits have yet been completed.

JORC Table 1 - Section 2 Reporting of Exploration Results

Criteria	JORC Code explanation	Commentary
Mineral tenement and land tenure status	<p><i>Type, reference name/number, location and ownership including agreements or material issues with third parties such as joint ventures, partnerships, overriding royalties, native title interests, historical sites, wilderness or national park and environmental settings.</i></p> <hr/> <p><i>The security of the tenure held at the time of reporting along with any known impediments to obtaining a licence to operate in the area.</i></p>	<p>Rox Resources Ltd has entered into a Joint Venture Agreement with Venus Metals Corporation Ltd to acquire an initial 50% interest in the Youanmi Gold Mine Joint Venture (OYG Joint Venture). Tenements in the JV consist of the following mining leases: M 57s /10, 51,76,97,109, 135, 160A, 164, 165, 166 and 167.</p> <hr/> <p>The tenement is in good standing and no known impediments exist.</p>
Exploration done by other parties	<p><i>Acknowledgment and appraisal of exploration by other parties.</i></p>	<p>Significant previous exploration has been carried out throughout the project by various companies, including AC/RAB, RC drilling and diamond drilling 1971-1973 WMC: RAB, RC and surface diamond drilling 1976 Newmont: 10 surface diamond drillholes (predominantly targeting base metals). 1980-1986 BHP: RAB, RC and surface diamond drilling (predominantly targeting base metals). 1986-1993 Eastmet: RAB, RC and surface diamond drilling. 1993-1997 Goldmines of Australia: RAB, RC and surface diamond drilling. Underground mining and associated underground diamond drilling. 2000-2003 Aquila Resources Ltd: Shallow RAB and RC drilling 2004-2005 Goldcrest Resources Ltd: Shallow RAB and RC drilling; data validation. 2007- 2013 Apex Minerals NL: 9 diamond holes targeting extensions to the Youanmi deeps resource.</p>

Criteria	JORC Code explanation	Commentary
Geology	<p><i>Deposit type, geological setting and style of mineralisation.</i></p>	<p>The Youanmi Project straddles a 40km strike length of the Youanmi Greenstone Belt, lying within the Southern Cross Province of the Archaean Yilgarn Craton in Western Australia. The greenstone belt is approximately 80km long and 25km wide, and incorporates an arcuate, north-trending major crustal structure termed the Youanmi Fault Zone. This structure separates two discordant greenstone terrains, with the stratigraphy to the west characterised by a series of weakly deformed, layered mafic complexes (Windimurra, Black Range, Youanmi and Barrambie) enveloped by strongly deformed, north-northeast trending greenstones. Gold mineralisation is developed semi-continuously in shear zones over a strike length of 2,300m along the western margin of the Youanmi granite.</p> <p>The Youanmi gold lodes are invariably associated with a high pyrite and arsenopyrite content and the primary ore is partially to totally refractory.</p> <p>There are a series of major fault systems cutting through the Youanmi trend mineralisation that have generated some significant off-sets.</p> <p>The Youanmi Deeps project area is subdivided into three main areas or fault blocks by cross-cutting steep south-east trending faults; and these are named Pollard, Main, and Hill End from south to north respectively.</p> <p>Granite hosted gold mineralisation occurs at several sites, most notably the Plant Zone Prospect, located immediately north-northeast of the Main Pit and processing plant. Gold mineralization occurs as free particles within the sulphide-poor stockwork quartz veining, controlled by shallow west dipping shear zones, within a deeply weathered granite host. Mineralised envelopes extend over a strike length of at least 1,200m.</p> <p>The Commonwealth-Connemarra mineralised trend is centred 4km northwest of the Youanmi plant. The geology comprises a sequence of folded mafic and felsic volcanic rocks intercalated with BIF and intruded by granite along the eastern margin. Gold mineralisation is developed over a 600m strike length, associated with a north trending and steeply west dipping shear zone that traverses the northwest trending succession.</p>
Drill hole Information	<p><i>A summary of all information material to the understanding of the exploration results including a tabulation of the following information for all Material drill holes:</i></p> <ul style="list-style-type: none"> • <i>easting and northing of the drill hole collar</i> • <i>elevation or RL (Reduced Level – elevation above sea level in metres) of the drill hole collar</i> • <i>dip and azimuth of the hole</i> • <i>down hole length and interception depth</i> • <i>hole length.</i> 	<p>Refer to drill results Table/s and the Notes attached thereto.</p>
Data aggregation methods	<p><i>In reporting Exploration Results, weighting averaging techniques, maximum and/or minimum grade truncations (e.g. cutting of high grades) and cut-off grades are usually Material and should be stated.</i></p>	<p>All reported assay intervals have been length weighted. No top cuts have been applied. A lower cut-off of 0.5g/t Au was applied. See Notes to Table/s.</p>

Criteria	JORC Code explanation	Commentary
	<p>Where aggregate intercepts incorporate short lengths of high grade results and longer lengths of low grade results, the procedure used for such aggregation should be stated and some typical examples of such aggregations should be shown in detail.</p>	High grade intervals internal to broader zones of mineralisation are reported as included intervals. See Table/s.
	<p>The assumptions used for any reporting of metal equivalent values should be clearly stated.</p>	No metal equivalent values have been used or reported.
Relationship between mineralisation widths and intercept lengths	<p>These relationships are particularly important in the reporting of Exploration Results.</p> <p>If the geometry of the mineralisation with respect to the drill hole angle is known, its nature should be reported.</p> <p>If it is not known and only the down hole lengths are reported, there should be a clear statement to this effect (e.g. 'down hole length, true width not known').</p>	No definite relationships between mineralisation widths and intercept lengths are known from this drilling due to the highly weathered nature of the material sampled.
Diagrams	<p>Appropriate maps and sections (with scales) and tabulations of intercepts should be included for any significant discovery being reported. These should include, but not be limited to a plan view of drill hole collar locations and appropriate sectional views.</p>	Refer to Figures and Table in the text.
Balanced reporting	<p>Where comprehensive reporting of all Exploration Results is not practicable, representative reporting of both low and high grades and/or widths should be practiced to avoid misleading reporting of Exploration Results.</p>	Representative reporting of both low and high grades and widths is practiced.
Other substantive exploration data	<p>Other exploration data, if meaningful and material, should be reported including (but not limited to): geological observations; geophysical survey results; geochemical survey results; bulk samples – size and method of treatment; metallurgical test results; bulk density, groundwater, geotechnical and rock characteristics; potential deleterious or contaminating substances.</p>	All meaningful and material information has been included in the body of the announcement.
Further work	<p>The nature and scale of planned further work (e.g. tests for lateral extensions or depth extensions or large-scale step-out drilling).</p> <p>Diagrams clearly highlighting the areas of possible extensions, including the main geological interpretations and future drilling areas, provided this information is not commercially sensitive</p>	Further work (RC) is justified to locate extensions to mineralisation both at depth and along strike.